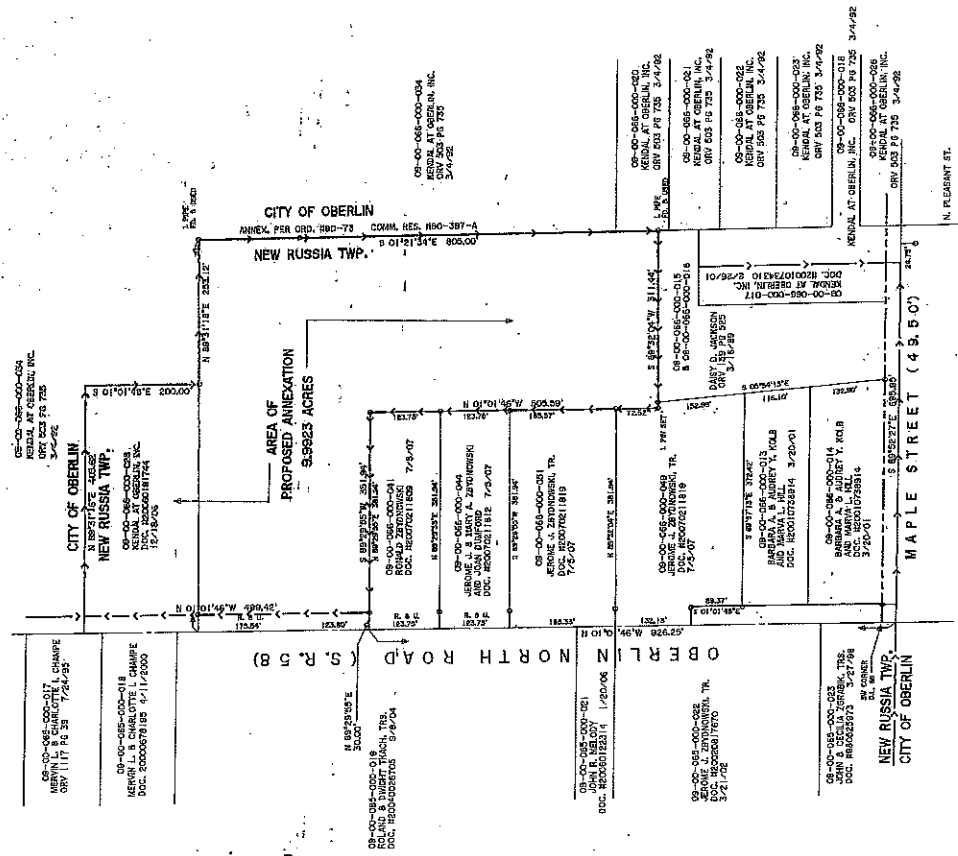


ALL LOTS SHOWN ARE ASSUMED TO BE AREA OF PROPOSED ANNEXATION
 ARE BASED ON RECORDS ON FILE IN THE OFFICE OF THE COUNTY ENGINEER,
 AUGUST, 2007 AND RECORDS OF RECORD.



**PLAT OF PROPOSED ANNEXATION
 TO THE CITY OF OBERLIN,
 FOR
 KENDAL AT OBERLIN, INC.**

BEING KNOWN AS PART OF NEW RUSSIA TOWNSHIP,
 COUNTY OF LORAIN, STATE OF OHIO
 AUGUST, 2007 SCALE 1" = 100'



LORAIN COUNTY COMMISSIONERS
 226 MIDDLE AVENUE
 ELYRIA, OH 44035

RECEIVED
 LORAIN COUNTY
 COMMISSIONERS
 2007 AUG 30 P 2:59

RECEIVED
 LORAIN COUNTY
 COMMISSIONERS

THOMAS SIMON & ASSOCIATES, INC.
 PROFESSIONAL LAND SURVEYORS
 100 SOUTH OLIVE STREET
 ELYRIA, OHIO 44029
 (330) 327-2523
 FAX (330) 327-0814