

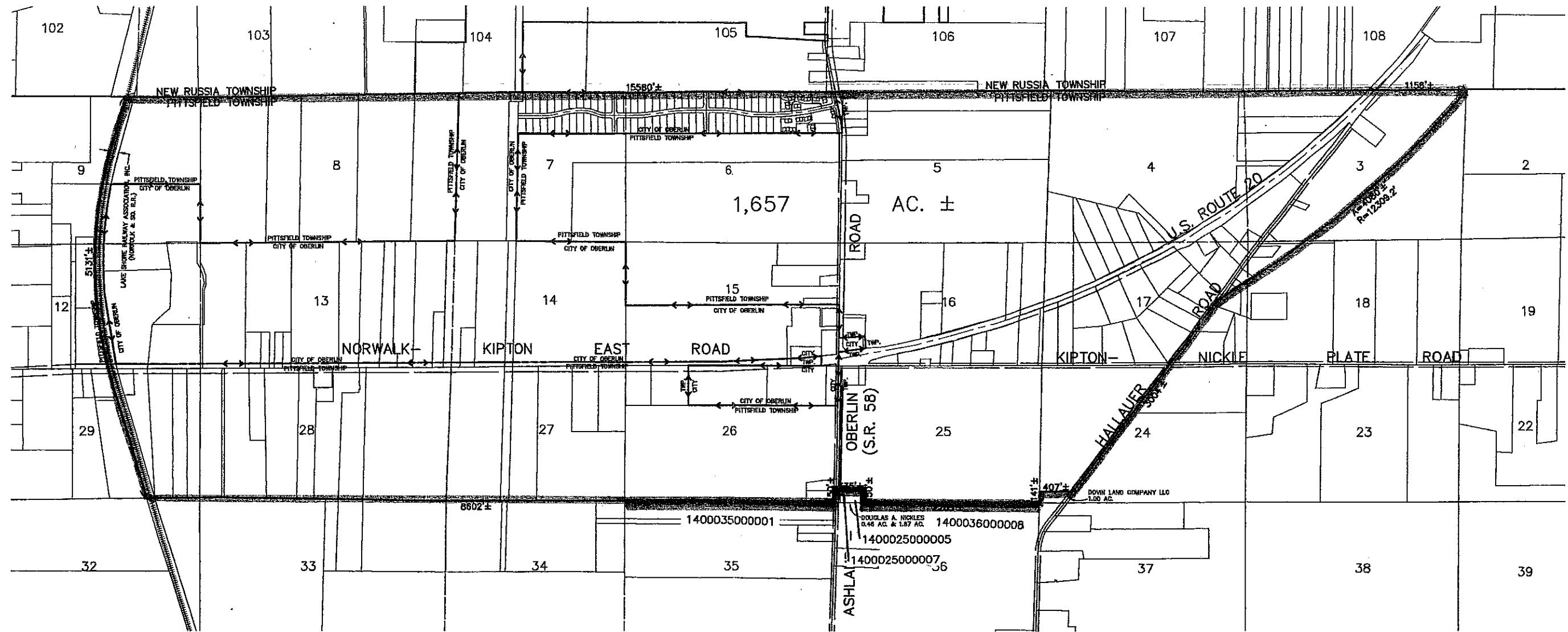
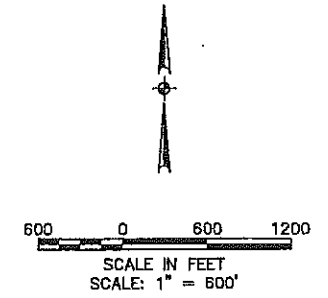


LEGEND

-  DISTRICT AREA
-  NO ANNEXATION ZONE



ACREAGE IN THE CITY OF OBERLIN = 388 AC. ±
 ACREAGE IN THE TOWNSHIP OF PITTSFIELD = 1,269 AC. ±
 TOTAL ACREAGE = 1,657 AC. ±

R:\03000\03130\add\control\dwg\0-REVSHARE01.dwg 1/27/2006 11:07:18 AM EST

*NOTE: THIS MAP HAS BEEN PREPARED FROM LORAIN COUNTY GIS RECORDS. DIMENSIONS AND ACREAGE ARE QUANTITIES SCALED THEREFROM AND ARE APPROXIMATE.

DATE	DATE	DESCRIPTION	BY
01-17-2006			
DRAWN BY: CWT			
CHKD BY: DJF			
DWG. NAME: 0-REVSHARE01			
PATH:\03000\03130\add\control\dwg\0-REVSHARE01.dwg			
F.B.			
1-17-06	ORIGINAL ISSUE		CWT

KS
 KS Associates, Inc.
 260 Burns Road, Suite 100
 Elyria, OH 44035
 P 440 365 4730
 F 440 365 4790
 www.ksassociates.com

**REVENUE SHARING MAP
 CITY OF OBERLIN & PITTSFIELD TWP.**

ALL OF ORIGINAL PITTSFIELD TWP. LOTS NOS. 4-8, 13-16, 26-28, AND PART OF ORIGINAL LOTS NOS. 3, 9, 12, 17, 18, 24, 25, & 29 CITY OF OBERLIN & PITTSFIELD TWP. COUNTY OF LORAIN STATE OF OHIO

SHEET
 1
 OF
 1
 JOB NO.
 03130