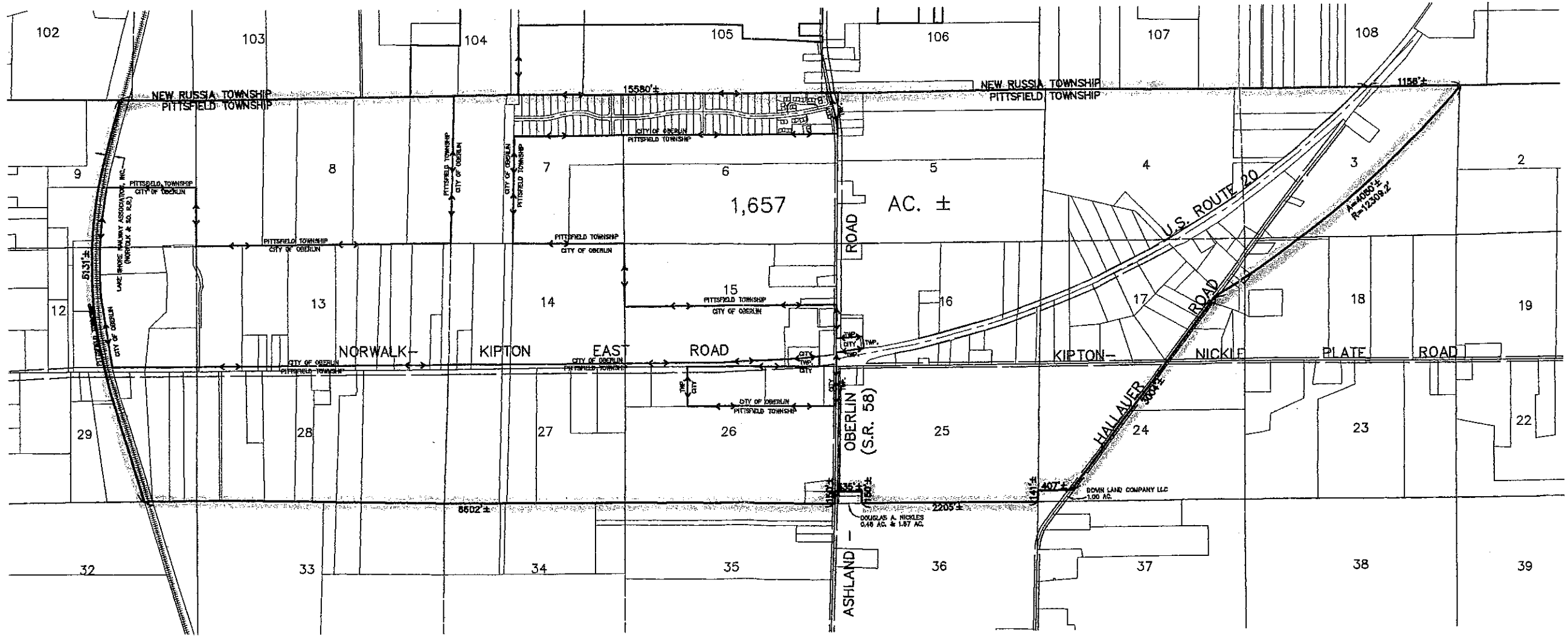
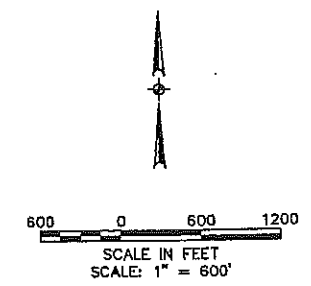


LEGEND

DISTRICT AREA

EXHIBIT A



ACREAGE IN THE CITY OF OBERLIN = 388 AC. ±
 ACREAGE IN THE TOWNSHIP OF PITTSFIELD = 1,269 AC. ±
 TOTAL ACREAGE = 1,657 AC. ±

R:\03000\03130\control\dwg\0-REVSHARED1.dwg 1/27/2006 11:07:18 AM EST

NOTE: THIS MAP HAS BEEN PREPARED FROM LORAIN COUNTY GIS RECORDS. DIMENSIONS AND ACREAGE ARE QUANTITIES SCALED THEREFROM AND ARE APPROXIMATE.

DATE	DESCRIPTION	BY
01-17-2006		
1-17-06	ORIGINAL ISSUE	CWT

KS
 KS ASSOCIATES
 KS Associates, Inc.
 260 Burns Road, Suite 100
 Elyria, OH 44035
 P 440 365 4730
 F 440 365 4790
 www.ksassociates.com

REVENUE SHARING MAP
 CITY OF OBERLIN & PITTSFIELD TWP.
 ALL OF ORIGINAL PITTSFIELD TWP. LOTS NOS. 4-8, 13-16, 26-28, AND
 PART OF ORIGINAL LOTS NOS. 3, 9, 12, 17, 18, 24, 25, & 29
 CITY OF OBERLIN & PITTSFIELD TWP., COUNTY OF LORAIN, STATE OF OHIO

SHEET
 1
 OF
 1
 JOB NO.
 03130