

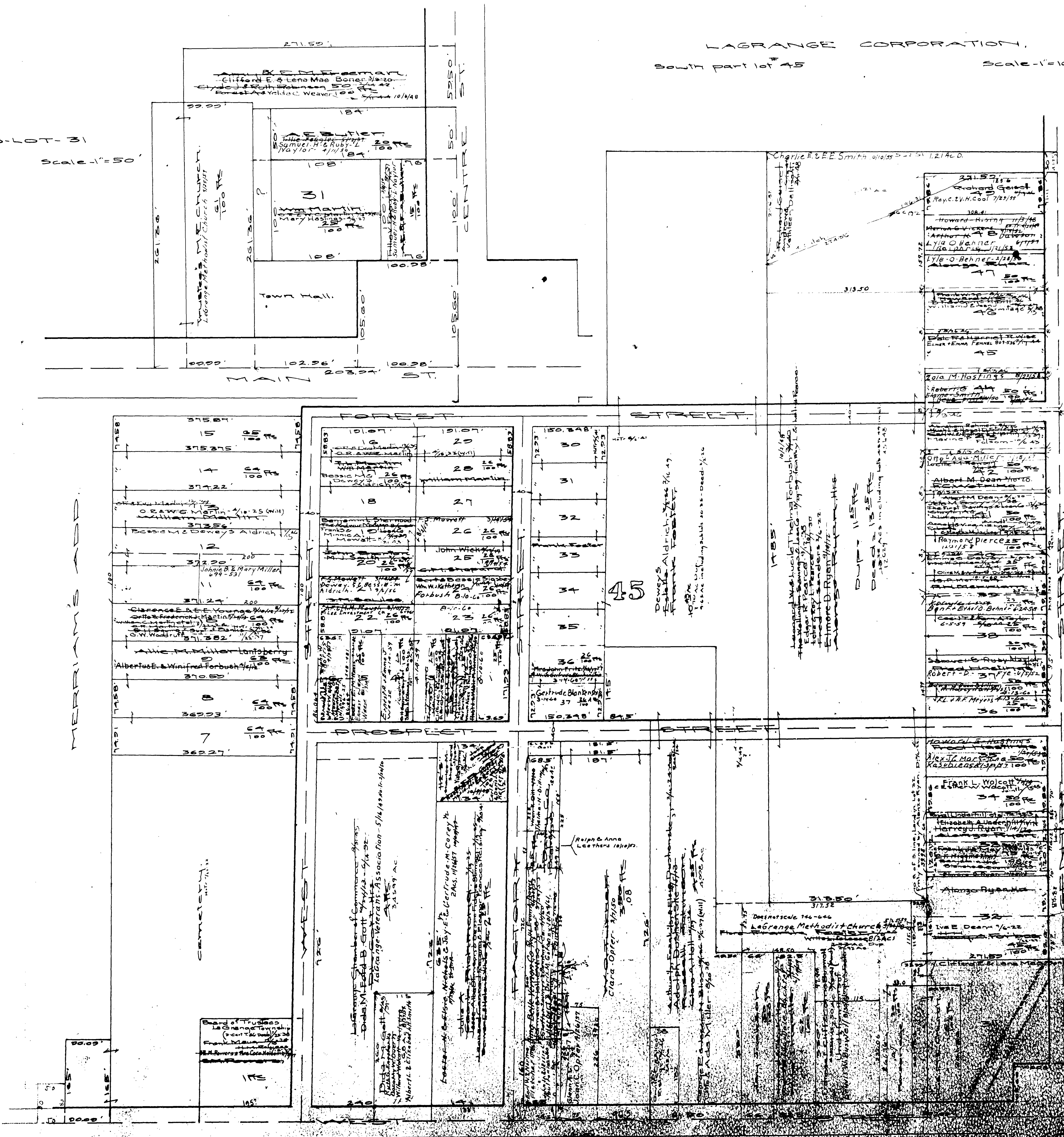
MAP OF
LAGRANGE TOWNSHIP

COPYRIGHT 1962
U.S. CODE, TITLE 17
LORAIN COUNTY, OHIO

Reproduced by,
Allied Microfilm Corp.
Akron, Ohio

LAGRANGE CORPORATION
South part lot 45
Scale - 1"=100'

Sub-Lot-31
Scale - 1"=50'



MAP OF
LAGRANGE TOWNSHIP

COPYRIGHT 1962
U.S. CODE, TITLE 17
LORAIN COUNTY, OHIO
Reproduced by,
Allied Microfilm Corp.
Akron, Ohio