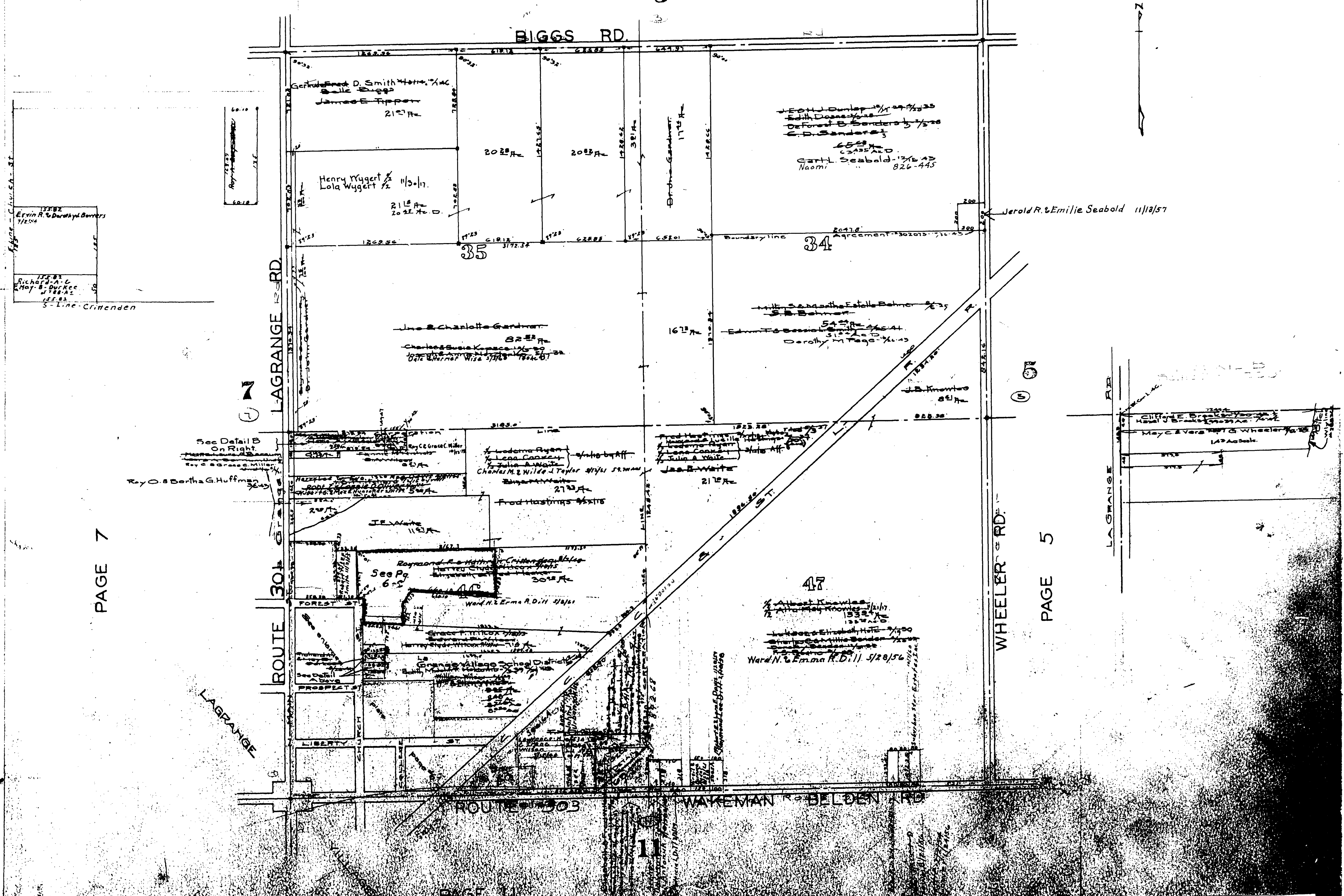


Line Clyde Wilcox 1/29/56
Mary S. Newbauer
Guy E. Am...

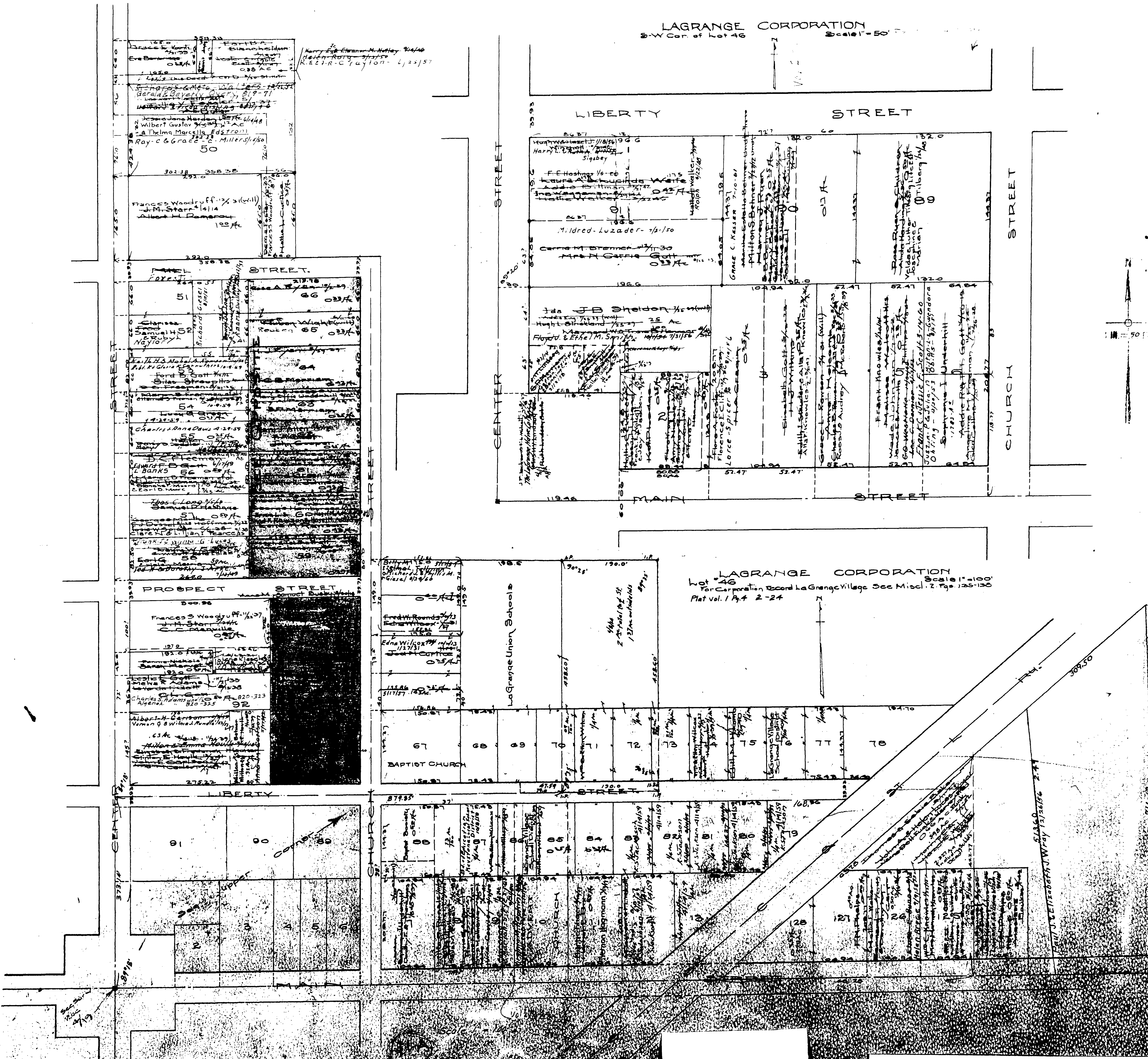


PAGE 7

PAGE 5

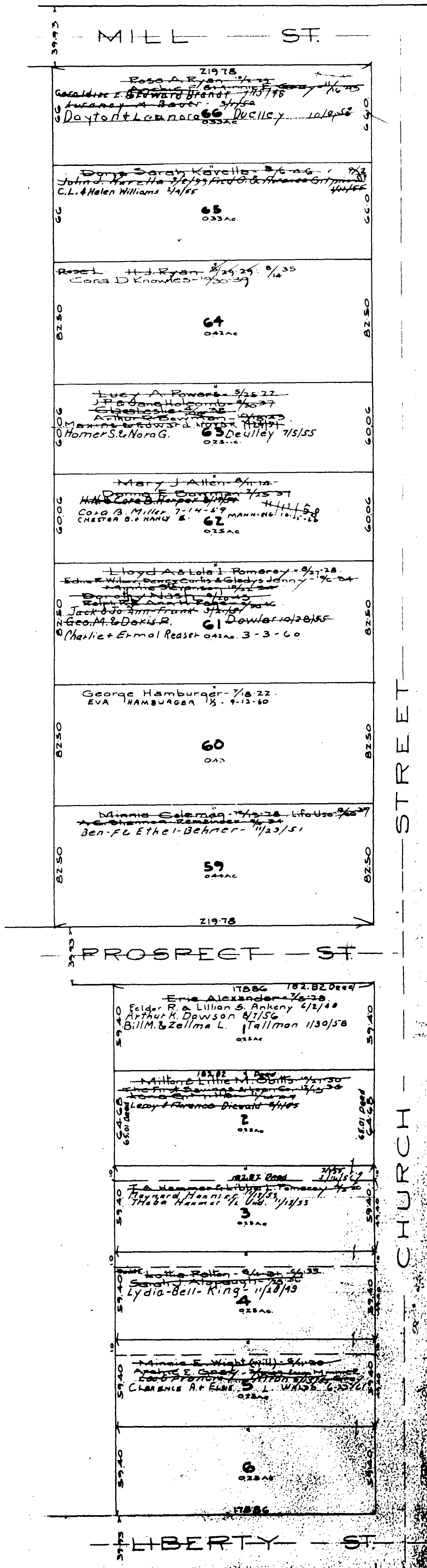
MAP OF
LAGRANGE TOWNSHIP

COPYRIGHT 1962
U.S. CODE, TITLE 17
LORAIN COUNTY, OHIO
Reproduced by
Allied Microfilm Corp.
Akron, Ohio



COPYRIGHT 1962
 U.S. CODE, TITLE 17
 LORAIN COUNTY, OHIO
 Reproduced by,
 Allied Microfilm Corp.
 Akron, Ohio

MAP OF
 LAGRANGE TOWNSHIP

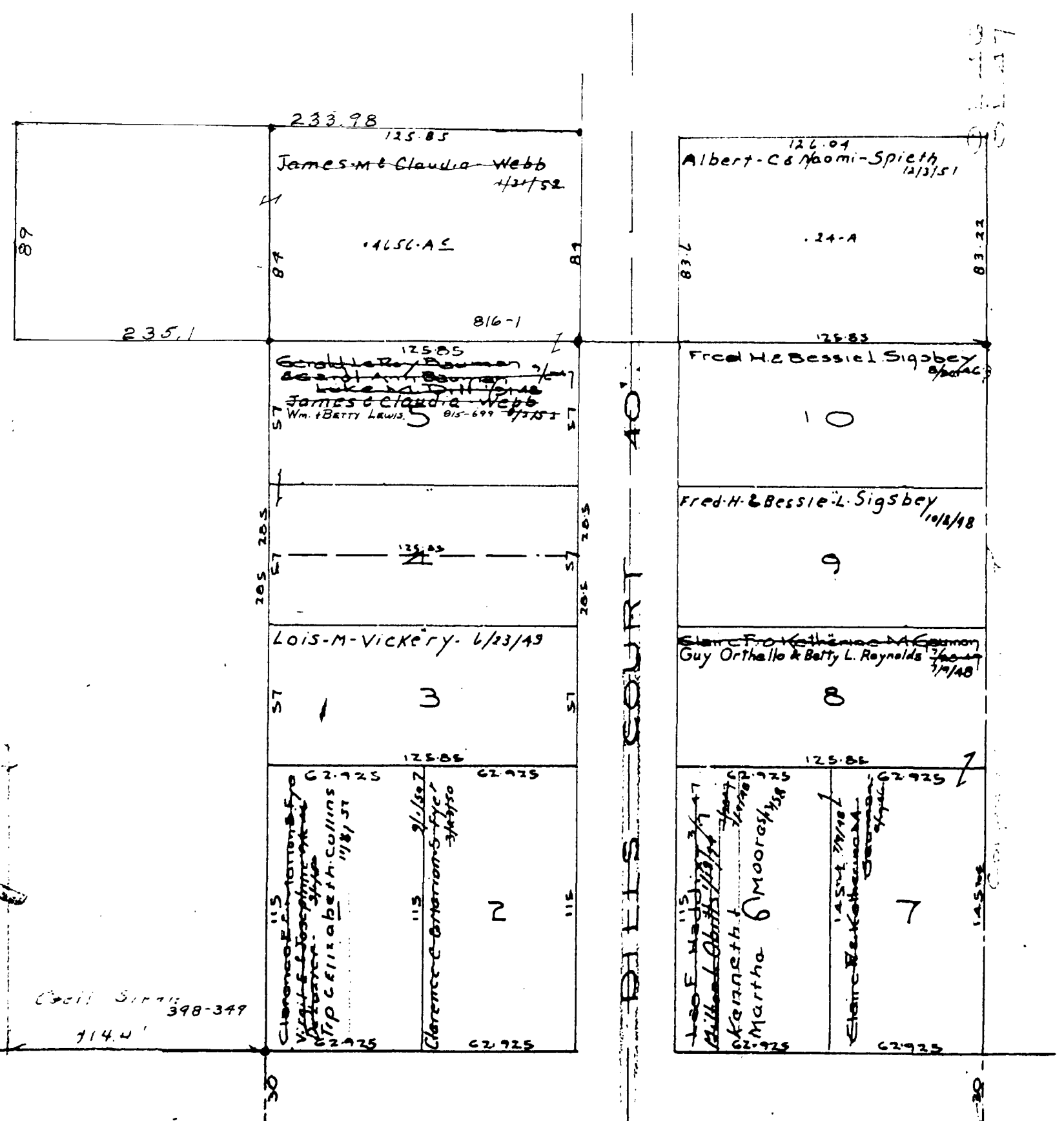


46

MAP OF
LAGRANGE TOWNSHIP

COPYRIGHT 1962
U.S. CODE, TITLE 17
LORAIN COUNTY, OHIO
Reproduced by,
Allied Microfilm Corp.
Akron, Ohio

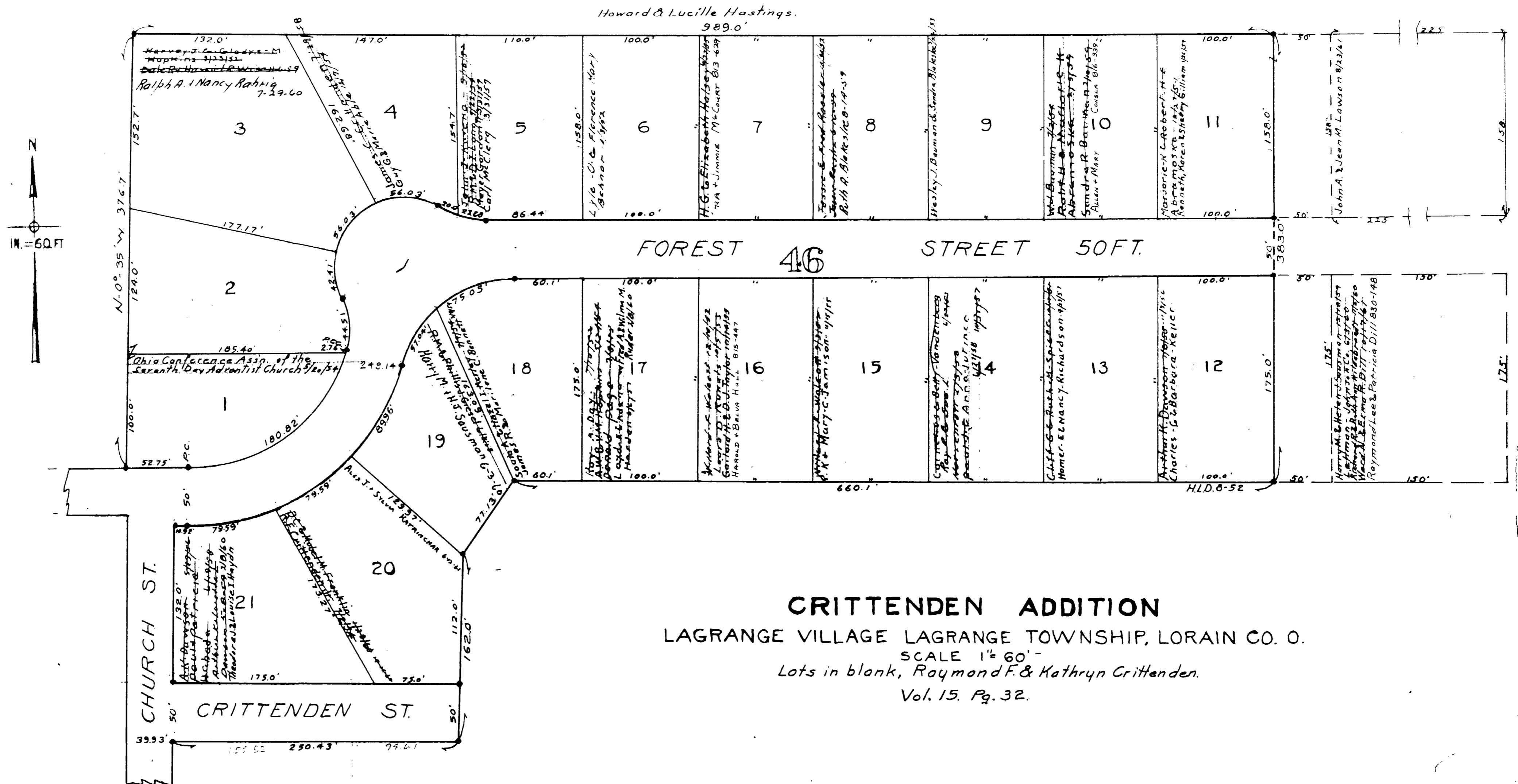
0116



MAP OF
LAGRANGE TOWNSHIP

COPYRIGHT 1962
U.S. CODE, TITLE 17
LORAIN COUNTY, OHIO
Reproduced by,
Allied Microfilm Corp.
Akron, Ohio

WAKEMAN BELDEN RD
EAST MAIN ST
SCALE - 1" = 50 Feet
Dills Subdivision Vol 13 Pg 46
Lots in blank - Ward N 2 Erma R Dill - 1/28/46



CRITTENDEN ADDITION
 LAGRANGE VILLAGE LAGRANGE TOWNSHIP, LORAIN CO. O.
 SCALE 1" = 60'
 Lots in blank, Raymond F. & Kathryn Crittenden.
 Vol. 15, Pg. 32.

MAP OF
LAGRANGE TOWNSHIP

COPYRIGHT 1962
 U.S. CODE, TITLE 17
 LORAIN COUNTY, OHIO
 Reproduced by,
 Allied Microfilm Corp.
 Akron, Ohio