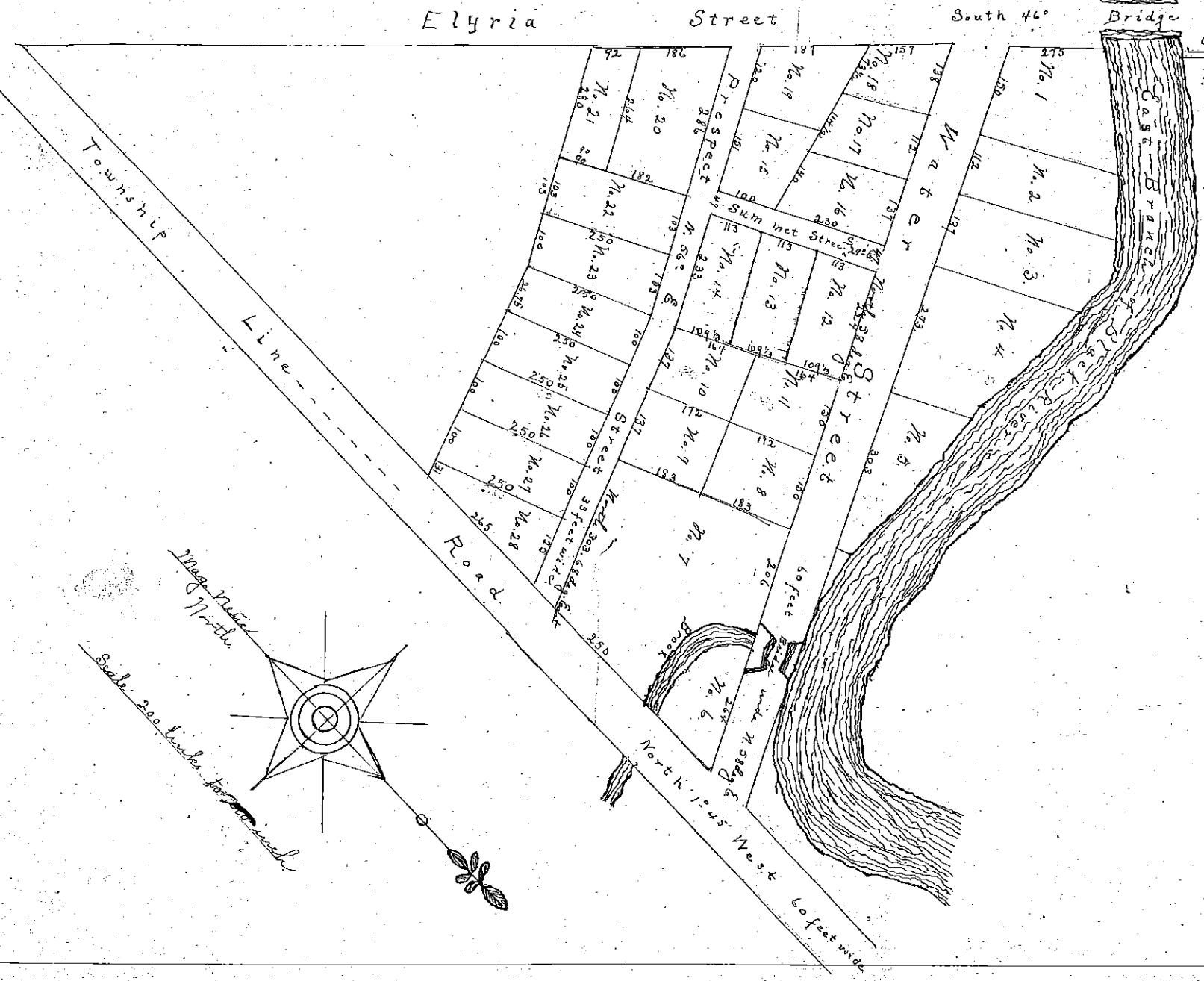
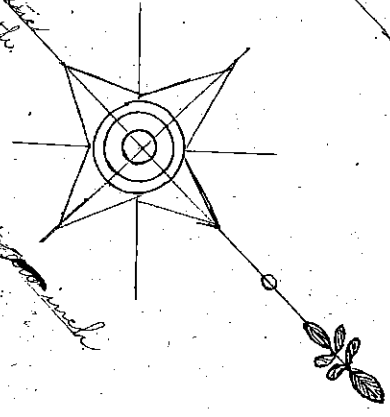


For location of water street see block No. 1100 #85380009 665

LaPorte Block No. 2.

Scale 200 feet to an inch  
 True North



I certify that I have surveyed and allotted on Block No. 2 in a town plat by the name of LaPorte situated in the Township of Carlisle in the County of Lorain & State of Ohio being a part of section No. 6 of said township Range 17 in the Connecticut Western Reserve and is owned or in possession of Samuel Brooks, Nelson S. Bishop, William Johnson, Purley Blakesley, Daniel Timmy, Phineas Johnson, Chas A. Drake, Henry Jackson the lots are numbered near the center of each from No. 1 to 28 both included the small figures near the line show the length and breadths of each lot in links a stone is fixed at the south westerly corner of Lot No. 19 in the corner of Elyria and Prospect streets Elyria street runs from Bridge south 46 degrees East and is 60 feet wide Prospect street runs from Elyria Street north 56 degrees

K 19 414

RECOPY