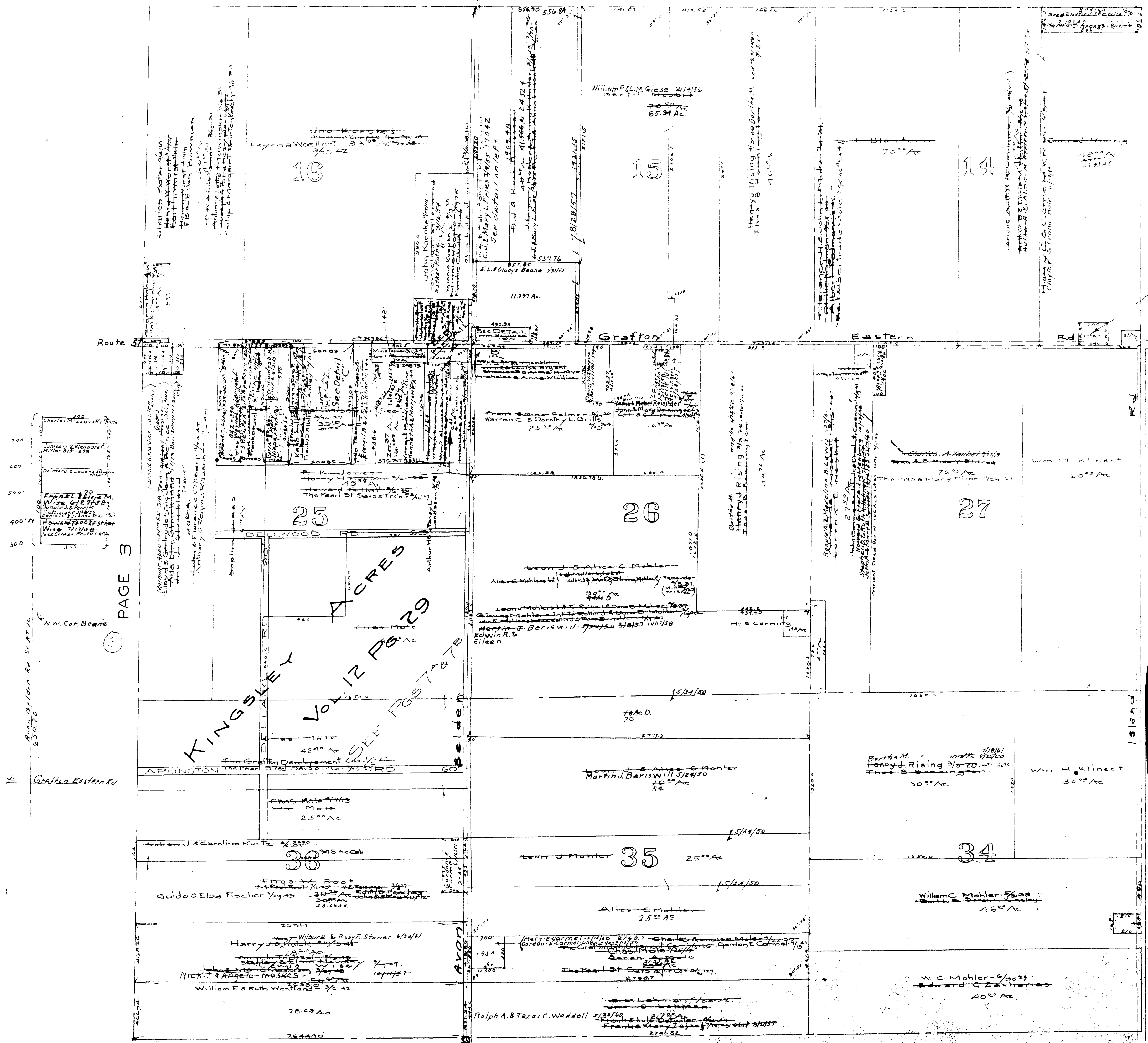


GRAFTON TWP.
NO. MIDDLE PART
SCALE 1"=400'



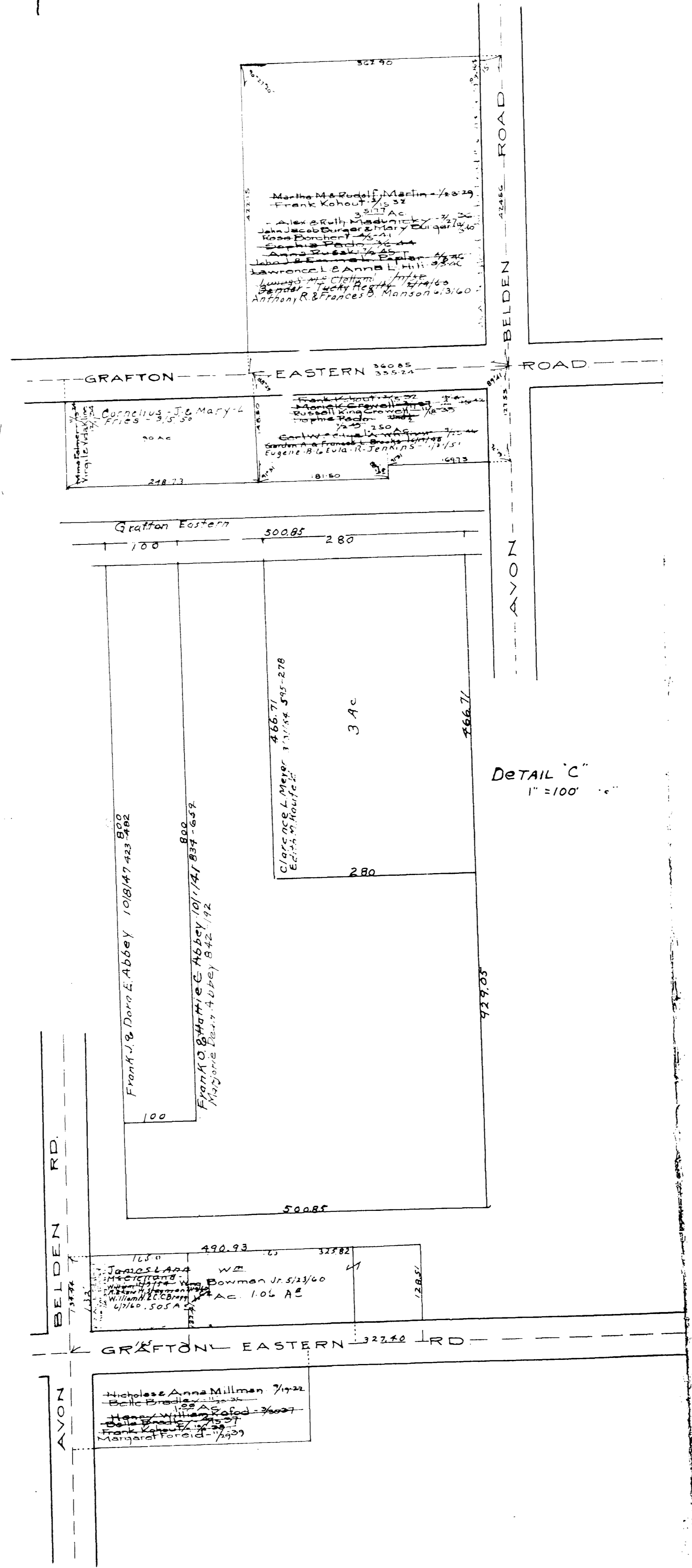
PAGE 3

PAGE 12

COPYRIGHT 1962
U.S. CODE, TITLE 17
LORAIN COUNTY, OHIO
Reproduced by
Allied Microfilm Corp.
Akron, Ohio

DETAIL A
Scale 1" = 100'

OPP-7

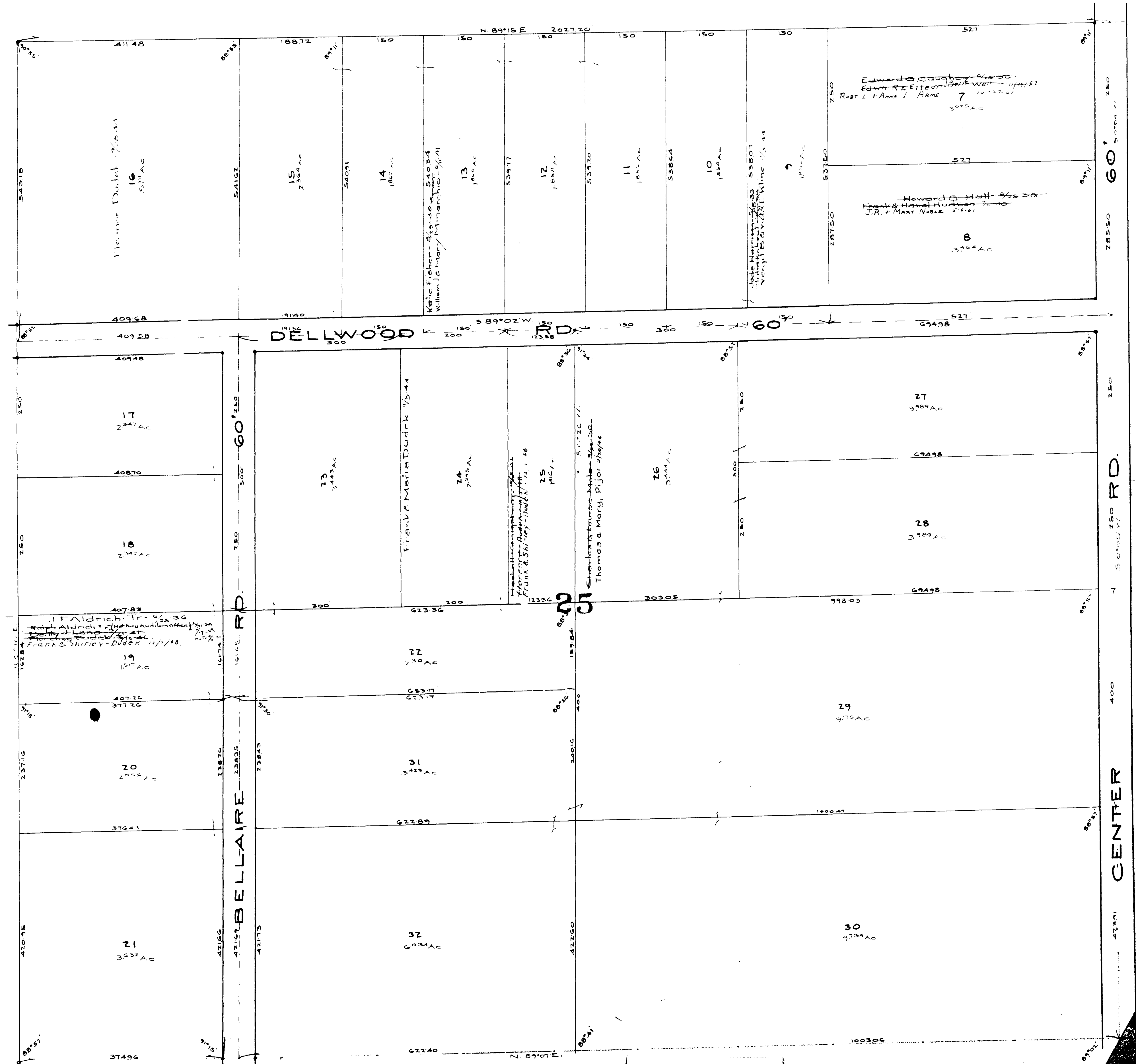


DETAIL C
1" = 100'

DETAIL B
Scale 1" = 100'

MAP OF
GRAFTON TOWNSHIP

COPYRIGHT 1962
U.S. CODE, TITLE 17
LORAIN COUNTY, OHIO
Reproduced by,
Allied Microfilm Corp.
Akron, Ohio



COPYRIGHT 1962
U.S. CODE, TITLE 17
LORAIN COUNTY, OHIO
Reproduced by,
Allied Microfilm Corp.
Akron, Ohio

MAP OF
GRAFTON TOWNSHIP

COPYRIGHT 1962
U.S. CODE, TITLE 17
LORAIN COUNTY, OHIO

Reproduced by,
Allied Microfilm Corp.
Akron, Ohio

MAP OF GRAFTON TOWNSHIP

7-B

Kingsley Acres
Vol. 12 Pg 29
Lots in blank-
The Pearl St. Says & Tr Co
Subdivided by
Thomas & Mary, Pijor 8/29/48

