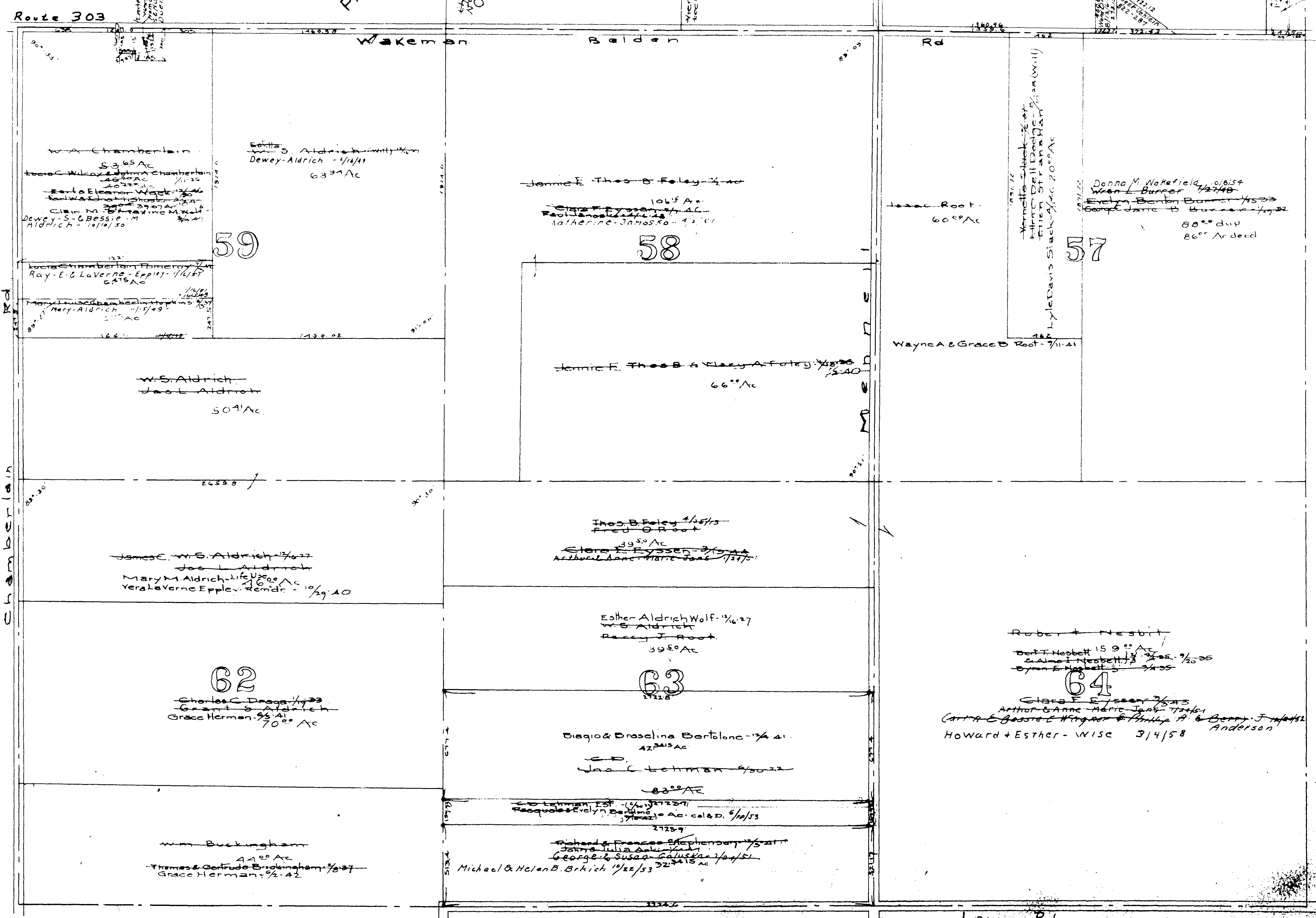
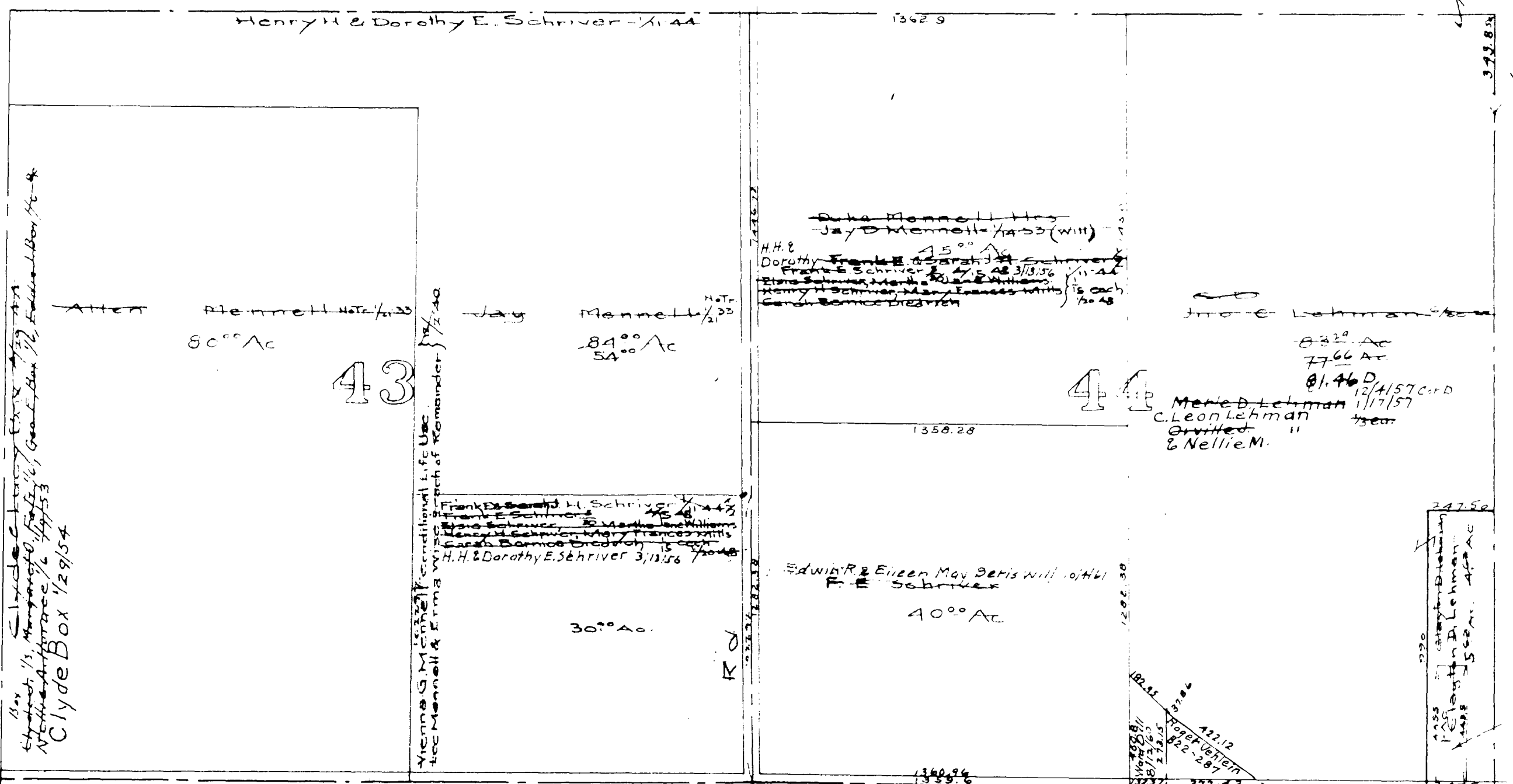
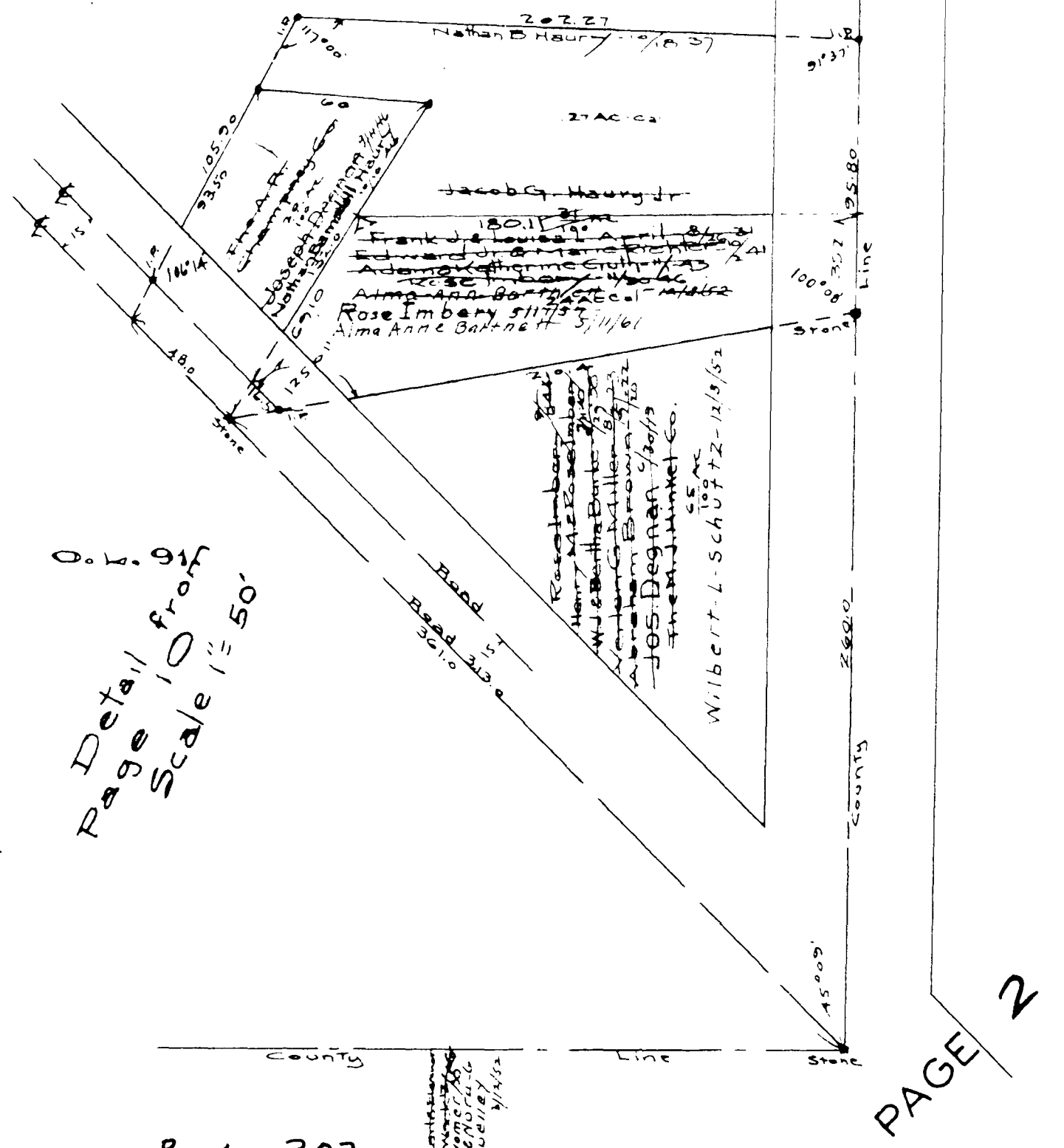


GRAFTON TWP.
WEST CEN. PART.
Scale 1" = 100ft.



MAP OF
GRAFTON TOWNSHIP

COPYRIGHT 1962
U.S. CODE, TITLE 17
LORAIN COUNTY, OHIO
Reproduced by,
Allied Microfilm Corp.
Akron, Ohio