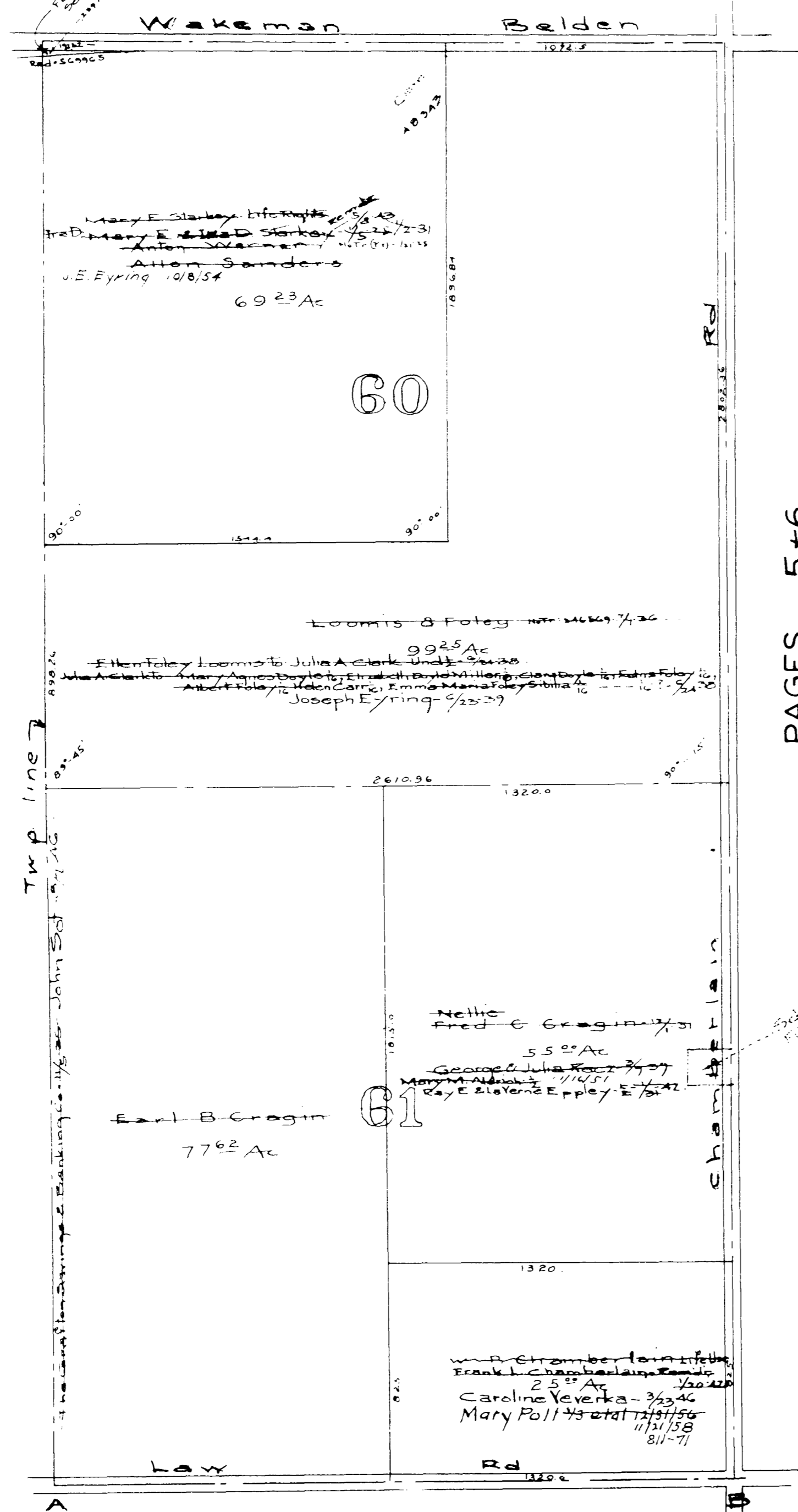


GRAFTON TWP.
WEST PART.
Scale 1 in = 400 ft.

PAGE 2

LAGRANGE TWP PAGE 12



PAGES 5+6

W.D. - Route 303

MAP OF
GRAFTON TOWNSHIP

COPYRIGHT 1962
U.S. CODE, TITLE 17
LORAIN COUNTY, OHIO
Reproduced by
Allied Microfilm Corp.
Akron, Ohio

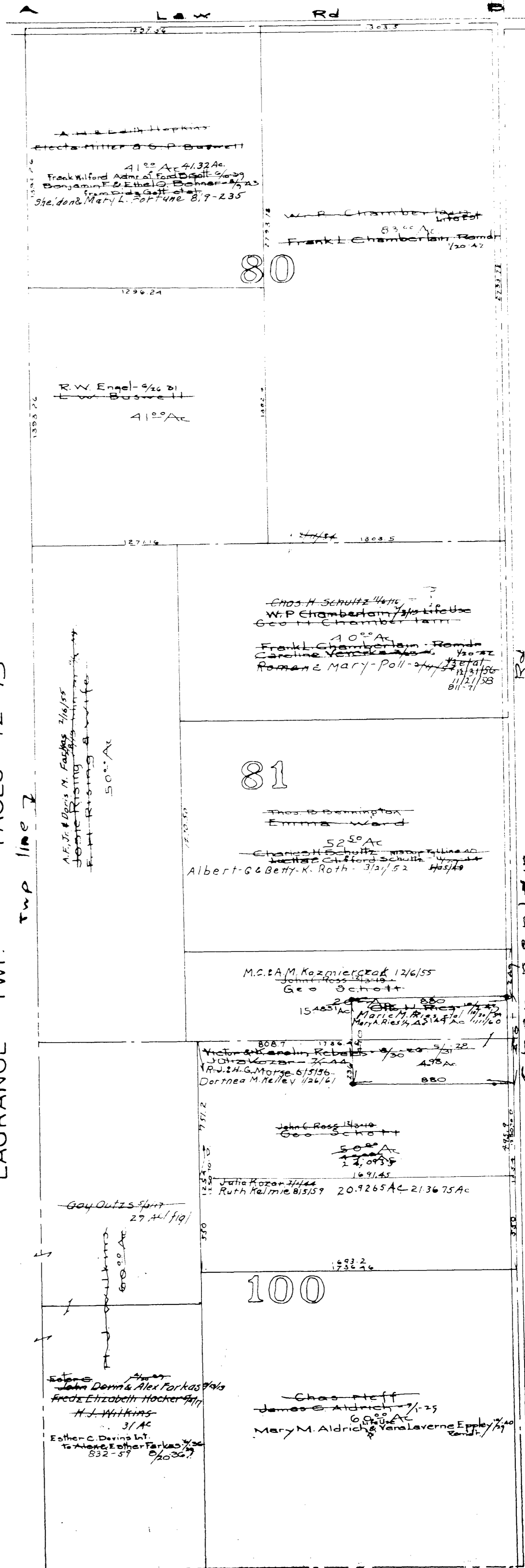
LAGRANGE TWP. PAGES 12+13

Twp line 7

Twp line 8

Twp line 9

MEDINA CO. LITCHFIELD TWP.



PAGE-6