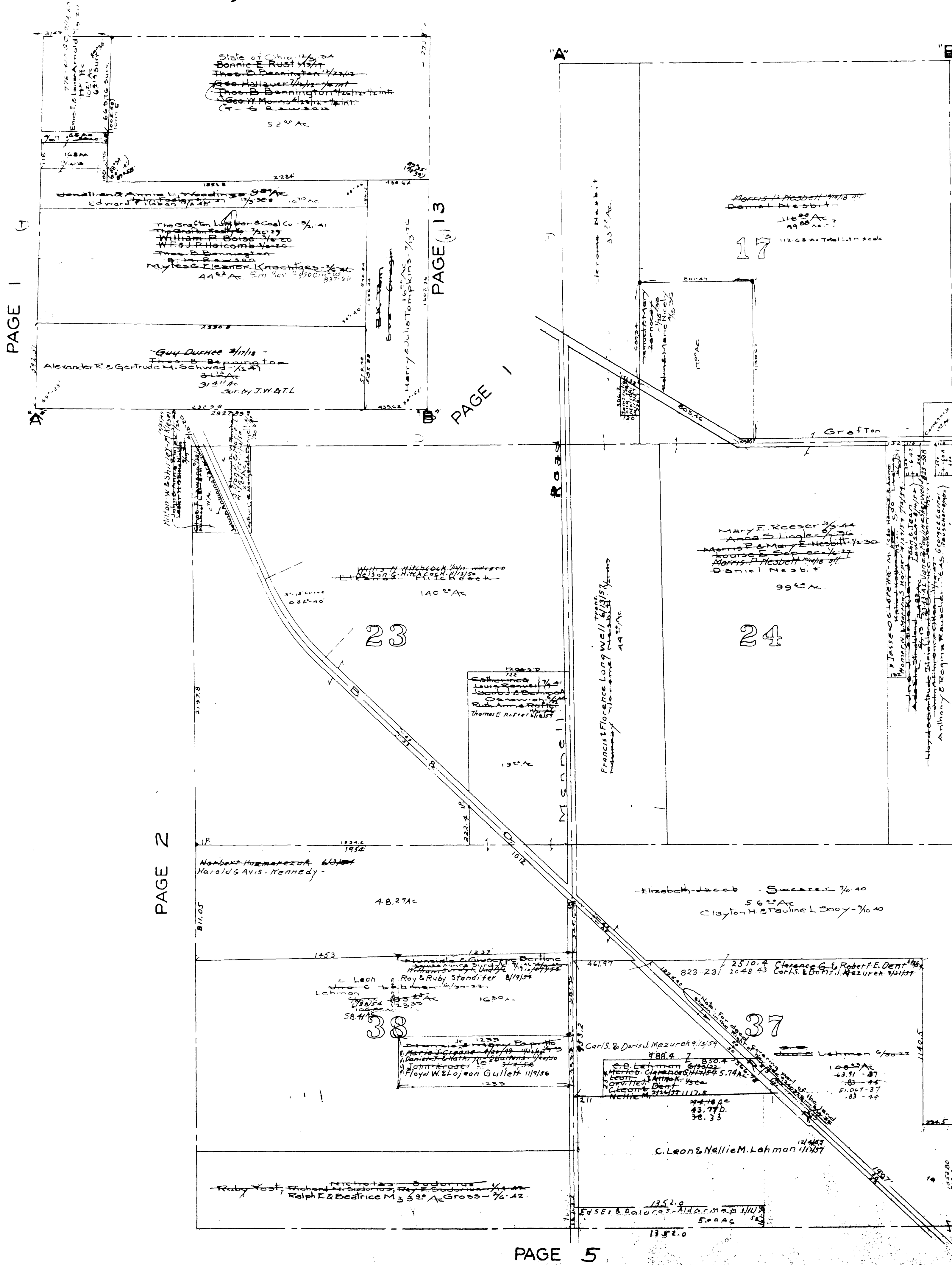


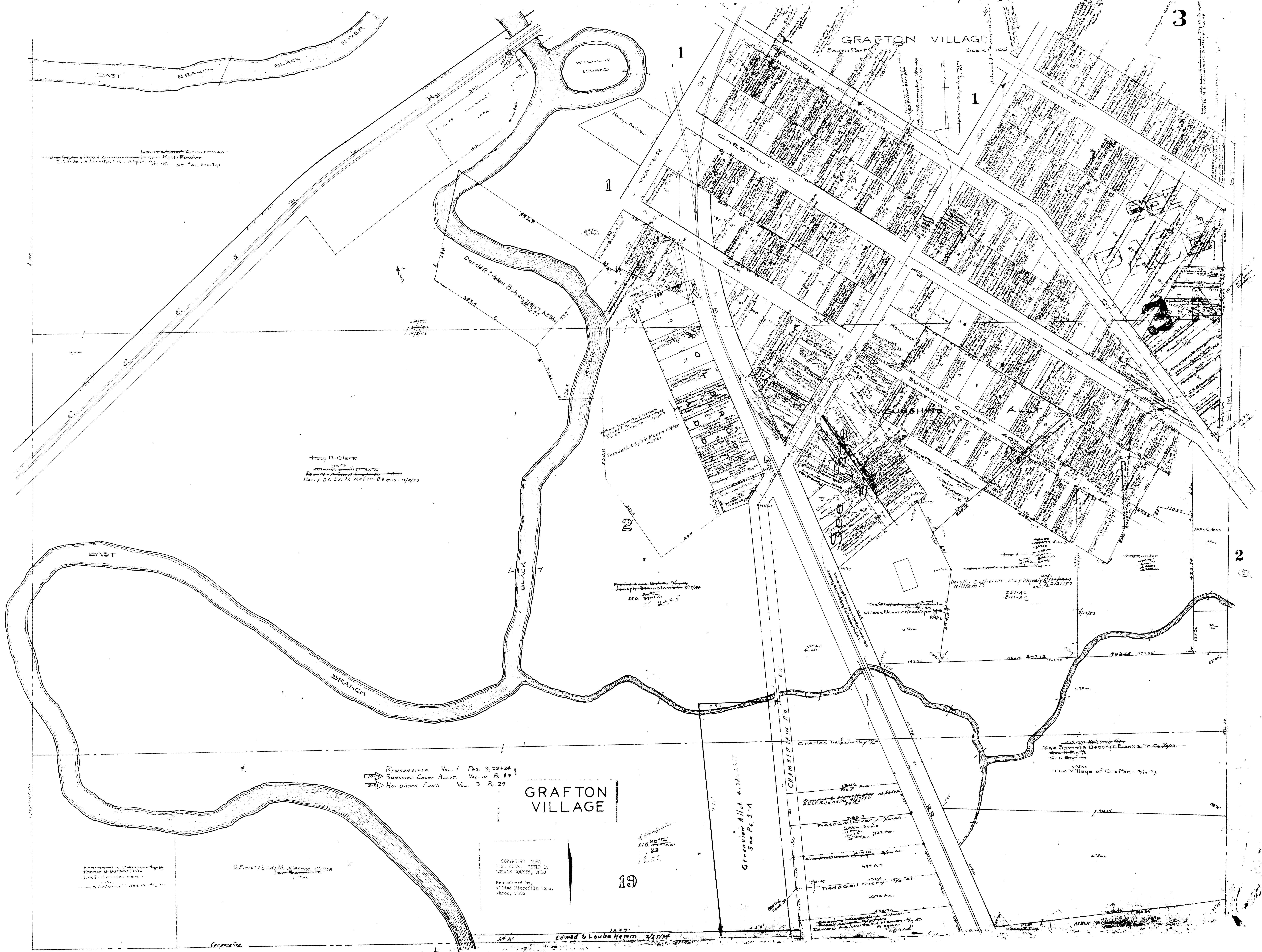
GRAFTON TWP.
NO. WEST MIDDLE PART
Scale 1" = 400 ft.



MAP OF
GRAFTON TOWNSHIP

COPYRIGHT 1962
U.S. CODE, TITLE 17
LORAIN COUNTY, OHIO
Reproduced by,
Allied Microfilm Corp.
Akron, Ohio

GRAFTON VILLAGE
South Part
Scale 1" = 100'



Lucy M. Clark
 234
 Attorney
 Recorder's Office
 Harry D. Edith McFie Bruns 10/1/13

RAWSONVILLE Vol. 1 Pgs. 3, 23+24
 SUNSHINE COURT ALLOT. Vol. 10 Pg. 89
 HOLBROOK ADD'N Vol. 3 Pg. 29

GRAFTON VILLAGE

COPYRIGHT 1962
 EDWARD & LOUISE HAMM
 12041N 10TH ST, OHIO
 Reproduced by
 Allied Microfilm Corp.
 Akron, Ohio

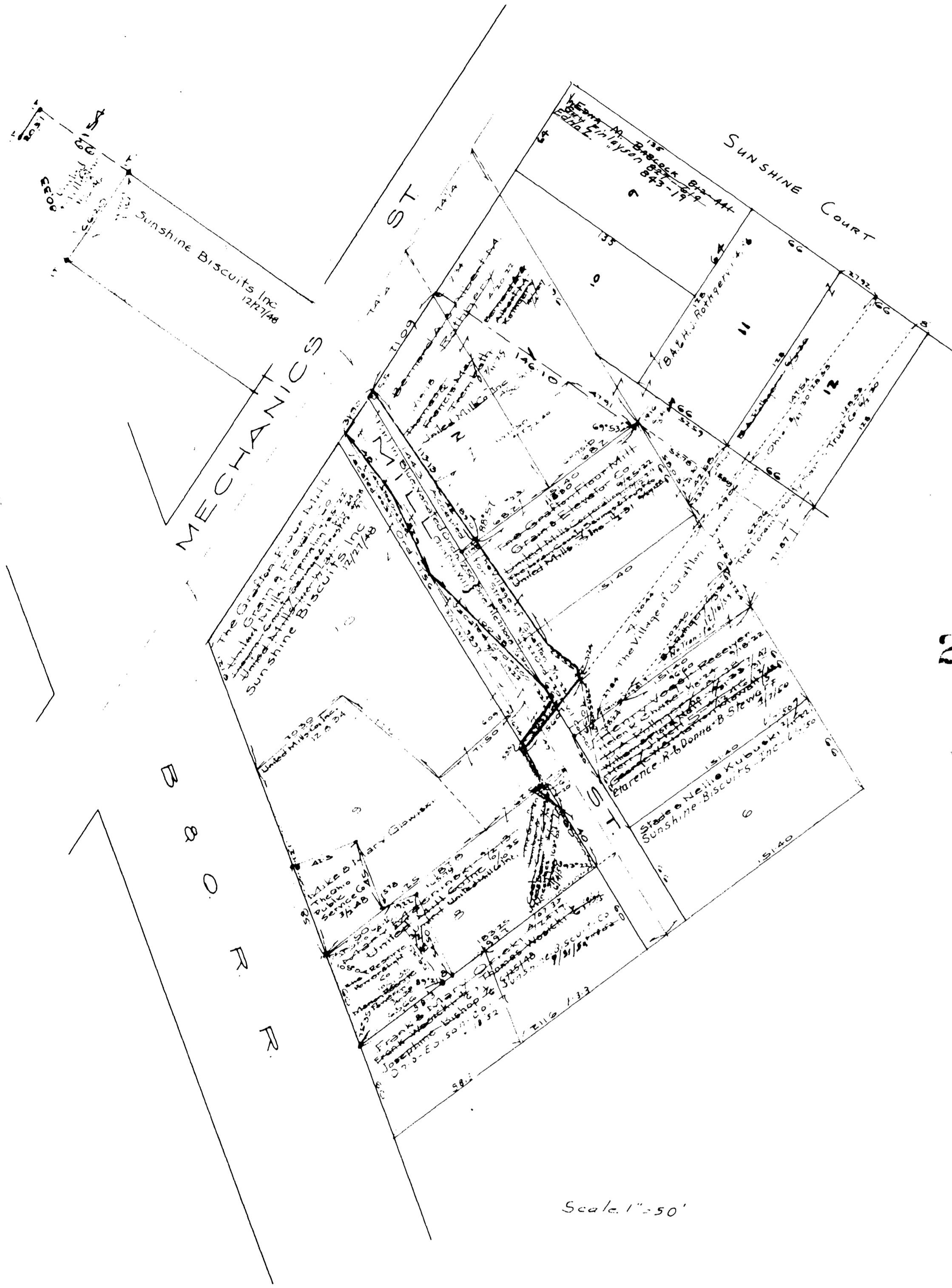
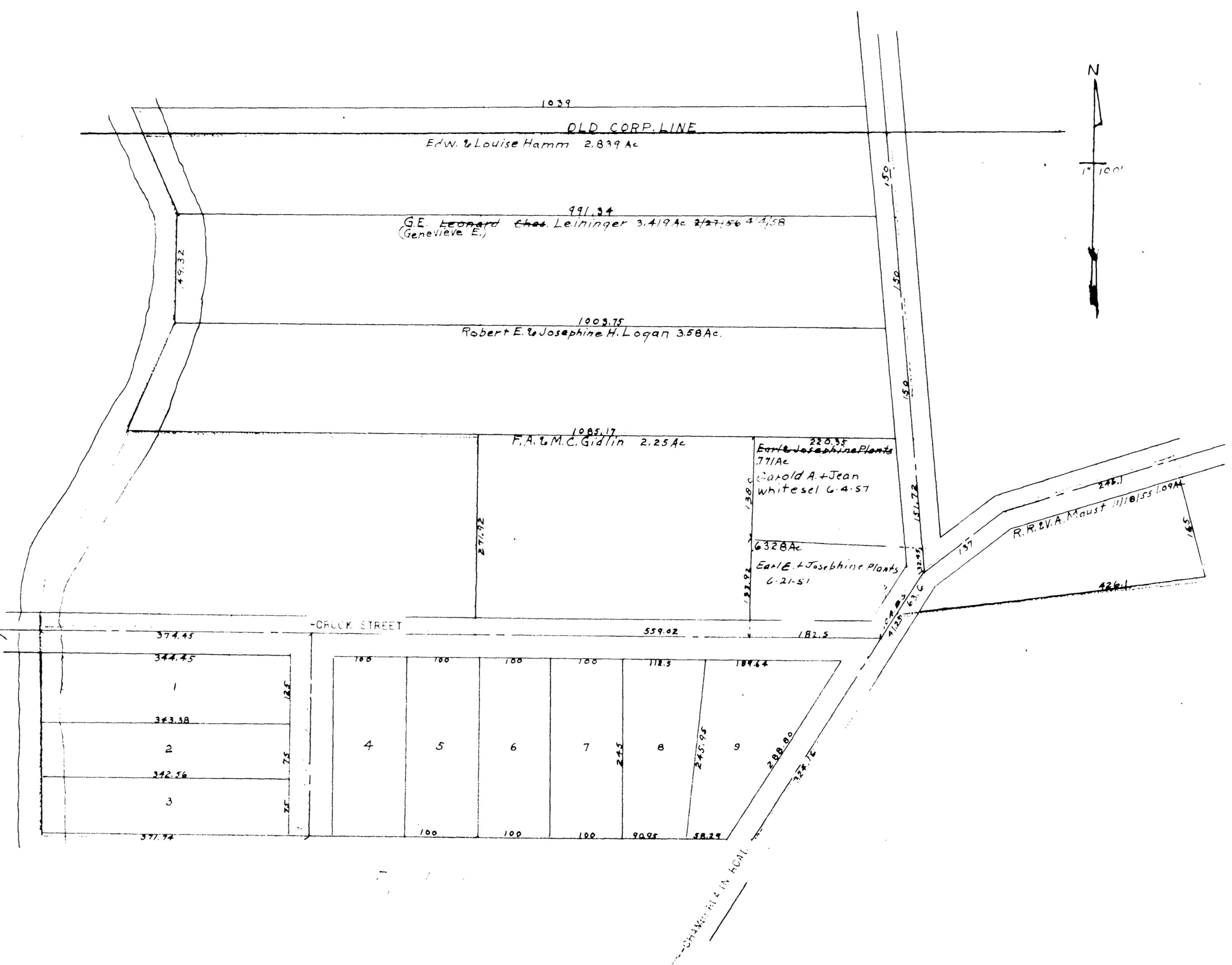
Greenview Allot 4/13/46
 See Pg 3-4

Edward & Louise Hamm 2/15/59

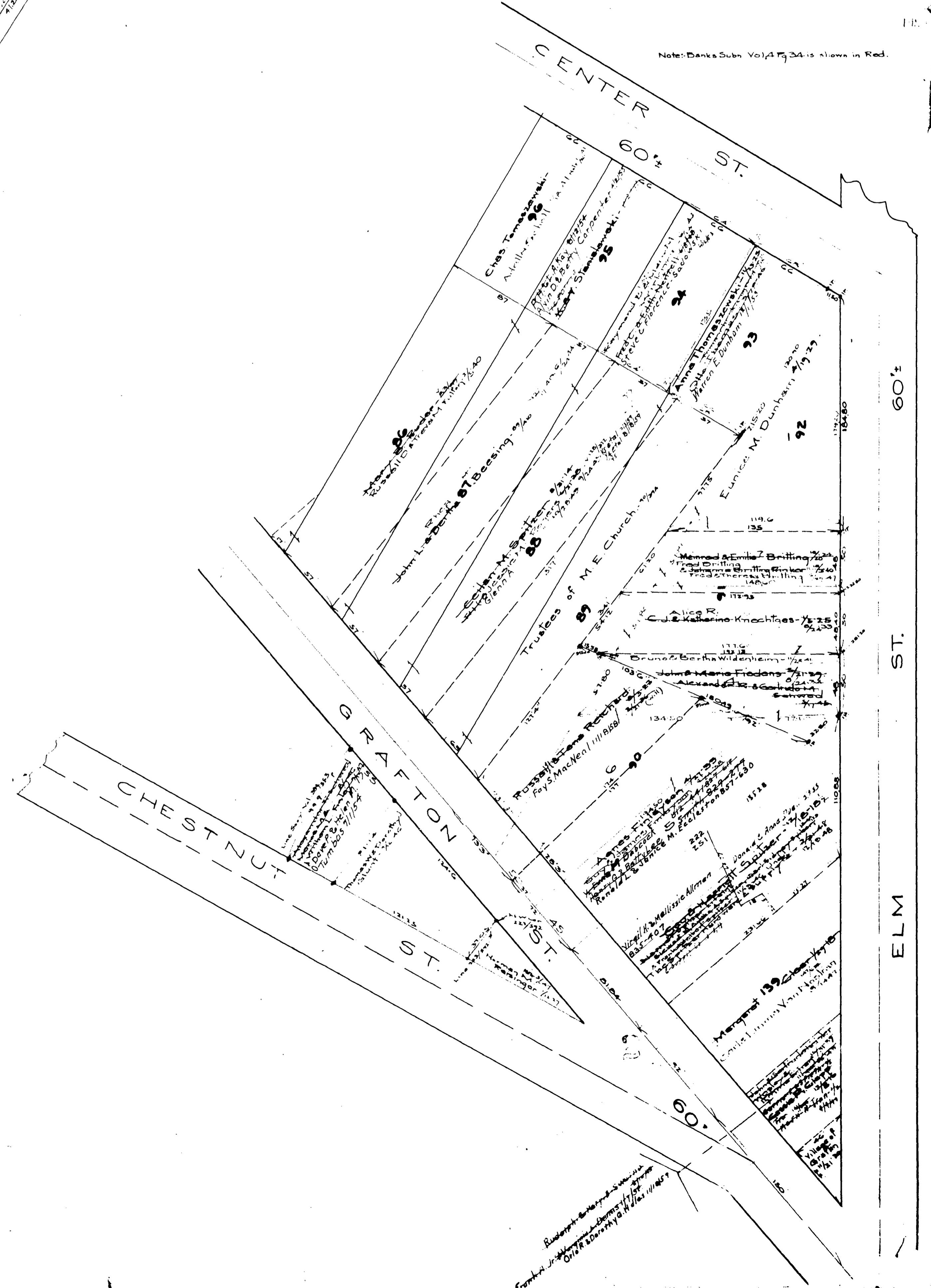
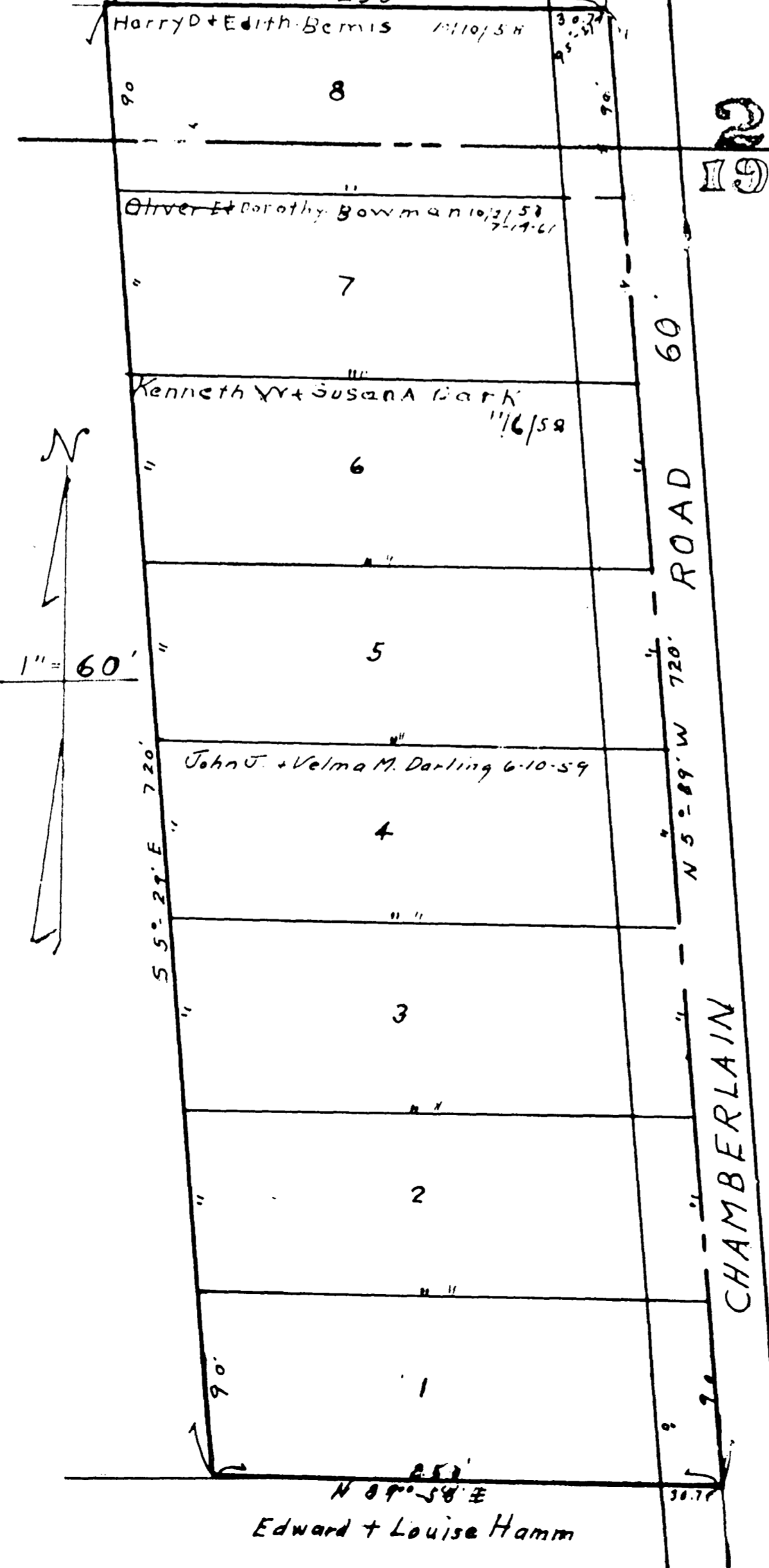
COPYRIGHT 1962
U.S. GOVERNMENT PRINTING OFFICE
LITHO IN U.S.A.
Reproduced by
Allied Microfilm Corp.
Akron, Ohio

DETAIL
Showing
BANKS SUB'D.
Lots 86-92
RAWSONVILLE PLAT.

Note: Banks Sub. Vol. 17 P. 24 is shown in Red.



GREENVIEW ALLOT
ORIGINAL LOTS 19-2
VOL. 19, Pg. 11-A
Lots in Blank: Harry D. Bemis



Scale 1"=50'

