

ELYRIA TWP

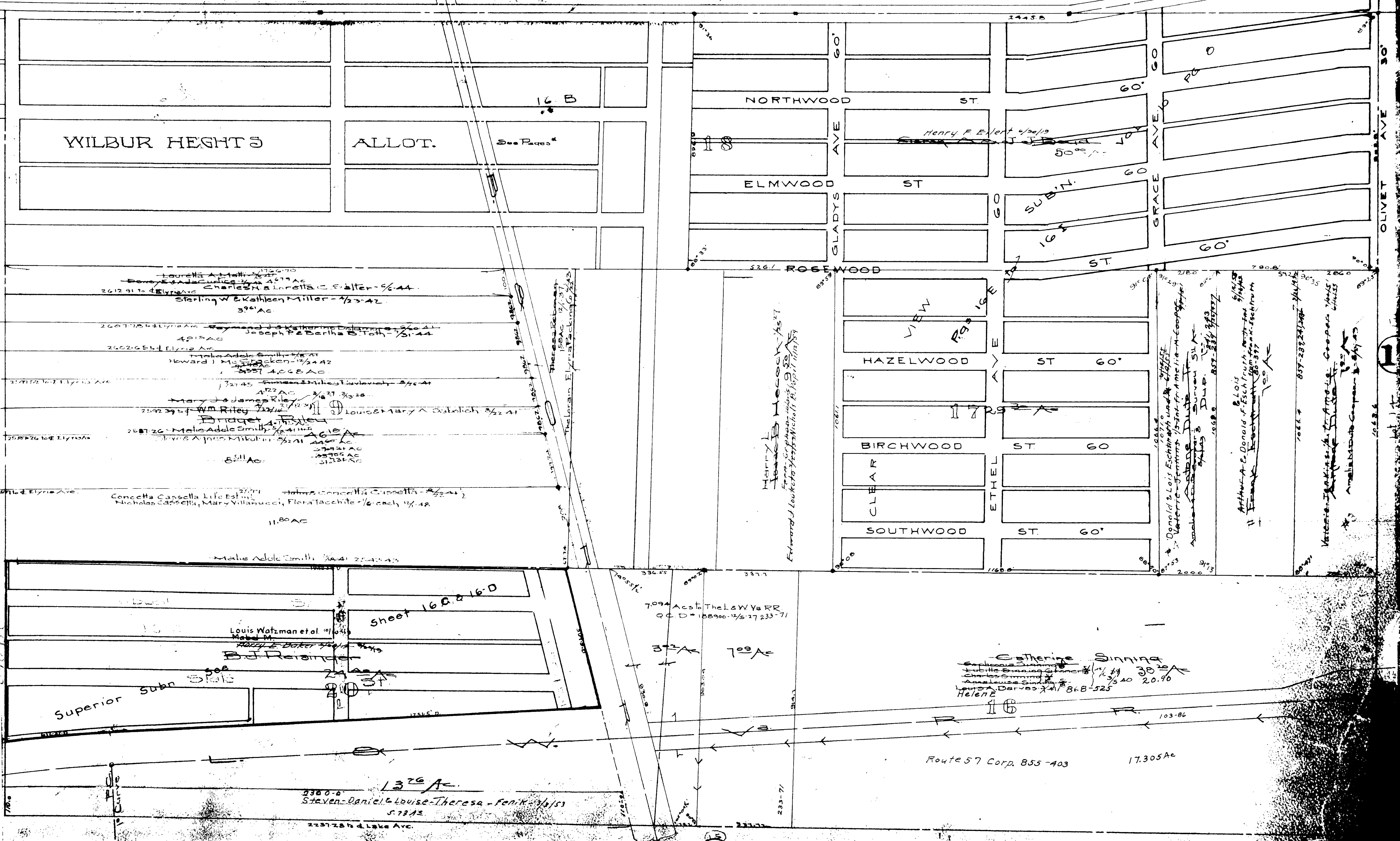
Burrell & Day Tr.

Scale 1" = 200' Annexation 877-247

SHEFFIELD TWP. PAGE 9

--- NORTH RIDGE ROAD ---
ROUTE 254

14



15

ELYRIA TOWNSHIP

COPYRIGHT 1962
 U.S. CODE, TITLE 17
 LORAIN COUNTY, OHIO

Reproduced by,
 Allied Microfilm Corp.
 Akron, Ohio

59

WILBUR HEIGHTS

Lots *5 Newberry Tract & *17-18 Burrell & Day Tract

Recorded Vol. 5 Pp 13

Scale 1" = 100'

Abner K. ...
11/17/52

Deceased ...
1894

Albert Davis ...

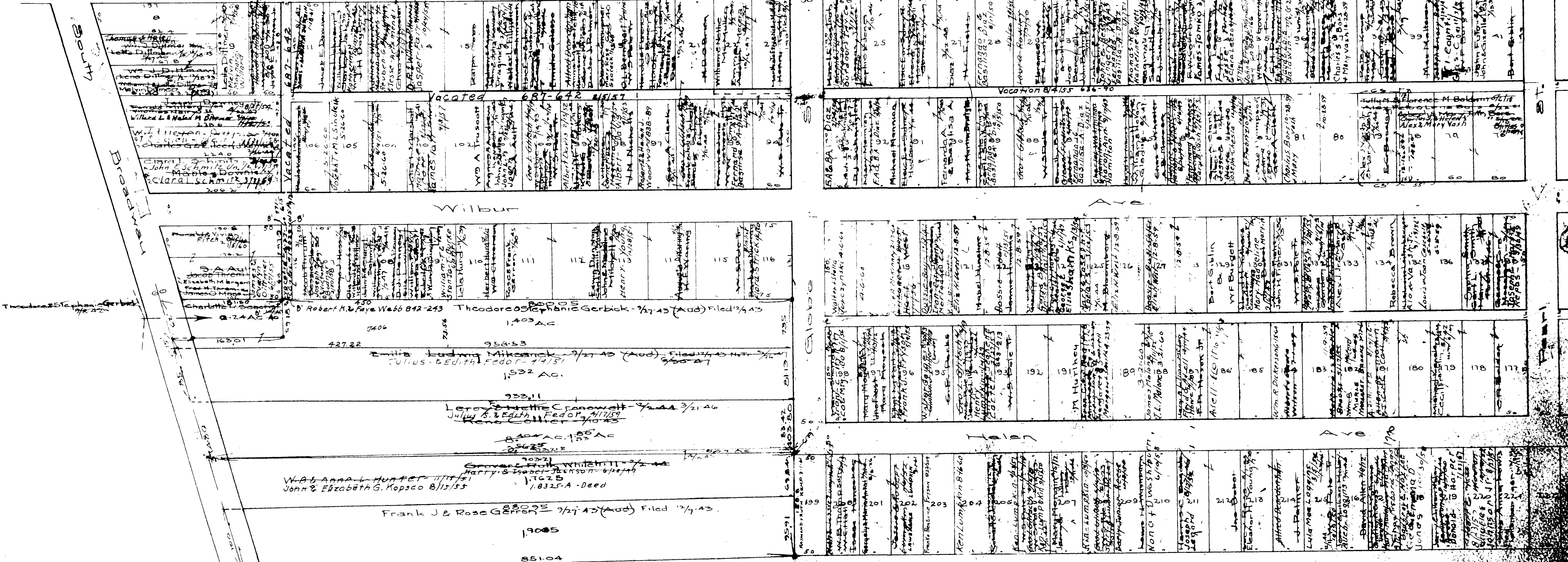
Herndon & ...
1915

Alfred ...

NORTH RIDGE ROAD

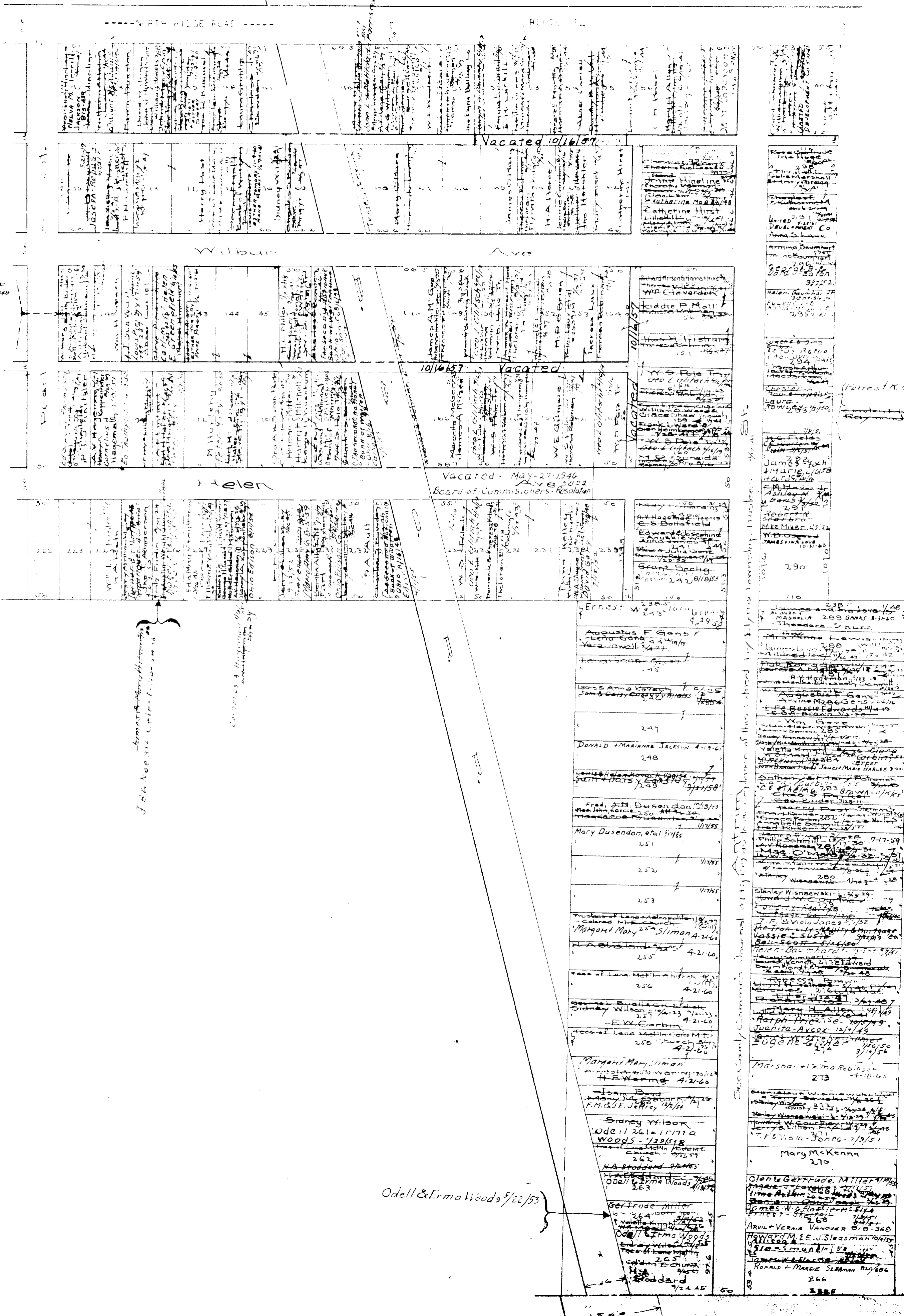
NORTH Ridge

ROUTE 254



COPYRIGHT 1962
 U.S. CODE, TITLE 17
 LORAIN COUNTY, OHIO

Reproduced by,
 Allied Microfilm Corp.
 Akron, Ohio



WILBUR HEIGHTS

Lots 5 Newberry Tract ex 17 & 18 Burrell & Day

Recorded Vol 5 Pg 13

Forest R. & Hazel Yoles 1/3 51

Scale 1" = 100'

Joseph M. ... 1/21 30
 William C. Eddy 1/25 29
 Grace E. Parker 1/22
 William R. ... 1/21 40
 Andrew W. ... L. Hood 7-17-59

ELYRIA TOWNSHIP

COPYRIGHT 1962
 U.S. CODE, TITLE 17
 LORAIN COUNTY, OHIO
 Reproduced by:
 Allied Microfilm Corp.
 Akron, Ohio

COPYRIGHT 1962
U.S. CODE, TITLE 17
LORAIN COUNTY, OHIO
Reproduced by,
Allied Microfilm Corp.
Akron, Ohio

ELYRIA TOWNSHIP

GLOBE ST. 50'

Burrell Day Tract

40	267
30	266
30	285
30	284
30	283
30	282
30	281
30	280
30	279
30	278
30	277
30	276
30	275
30	274
30	273
30	272
30	271
30	270
30	269
30	268
30	267
30	266
30	265
30	264
30	263
30	262
30	261
30	260
30	259
30	258
30	257
30	256
30	255
30	254
30	253
100	100

WABASH ST. 60'

172
173
174
175
176
177
178
179
180
181
182
183
184
185
186
187
188
189
190
191
192
193
194
195
196
197
198
199
200
201
202
203
204
205
206
207
100

STATE ST. 60'

27
28
29
30
31
32
33
34
35
36
37
38
39
40
41
42
43
44
45
46
47
48
49
50
51
52
53
54
55
56
57
58
59
60
61
62
63
64
65
66
67
68
69
70
71
72
73
74
75
76
77
78
79
80
81
82
83
84
85
86
87
88
89
90
91
92
93
94
95
96
97
98
99
100

PEARL ST. 50'

16D

Super Subn Vol Pg

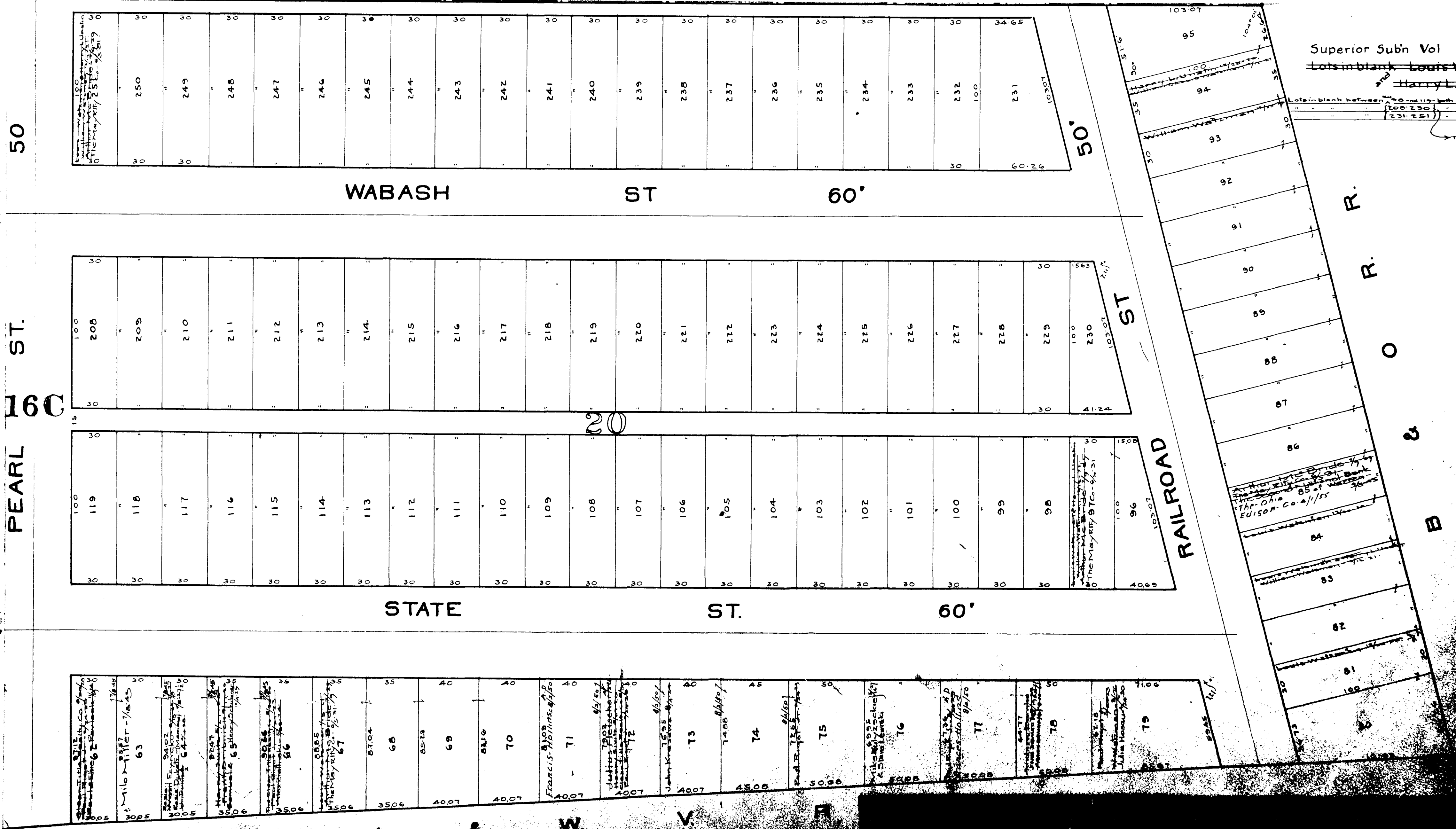
L. & W. V. R. R.

COPYRIGHT 1962
U.S. CODE, TITLE 17
LORAIN COUNTY, OHIO

Reproduced by,
Allied Microfilm Corp.
Akron, Ohio

ELYRIA TOWNSHIP

1" = 40 FT.



Superior Subn Vol Pg

Lots in blank Louis Wetman

Harry L. ...

Lots in blank between ...

The May/Kelley Co.

The May/Kelley Co.

The May/Kelley Co.

The May/Kelley Co.

The May/Kelley Co.

The May/Kelley Co.

The May/Kelley Co.

The May/Kelley Co.

The May/Kelley Co.

The May/Kelley Co.

The May/Kelley Co.

The May/Kelley Co.

The May/Kelley Co.

The May/Kelley Co.

The May/Kelley Co.

The May/Kelley Co.

The May/Kelley Co.

The May/Kelley Co.

The May/Kelley Co.

The May/Kelley Co.

The May/Kelley Co.

The May/Kelley Co.

The May/Kelley Co.

The May/Kelley Co.

The May/Kelley Co.

The May/Kelley Co.

The May/Kelley Co.

The May/Kelley Co.

The May/Kelley Co.

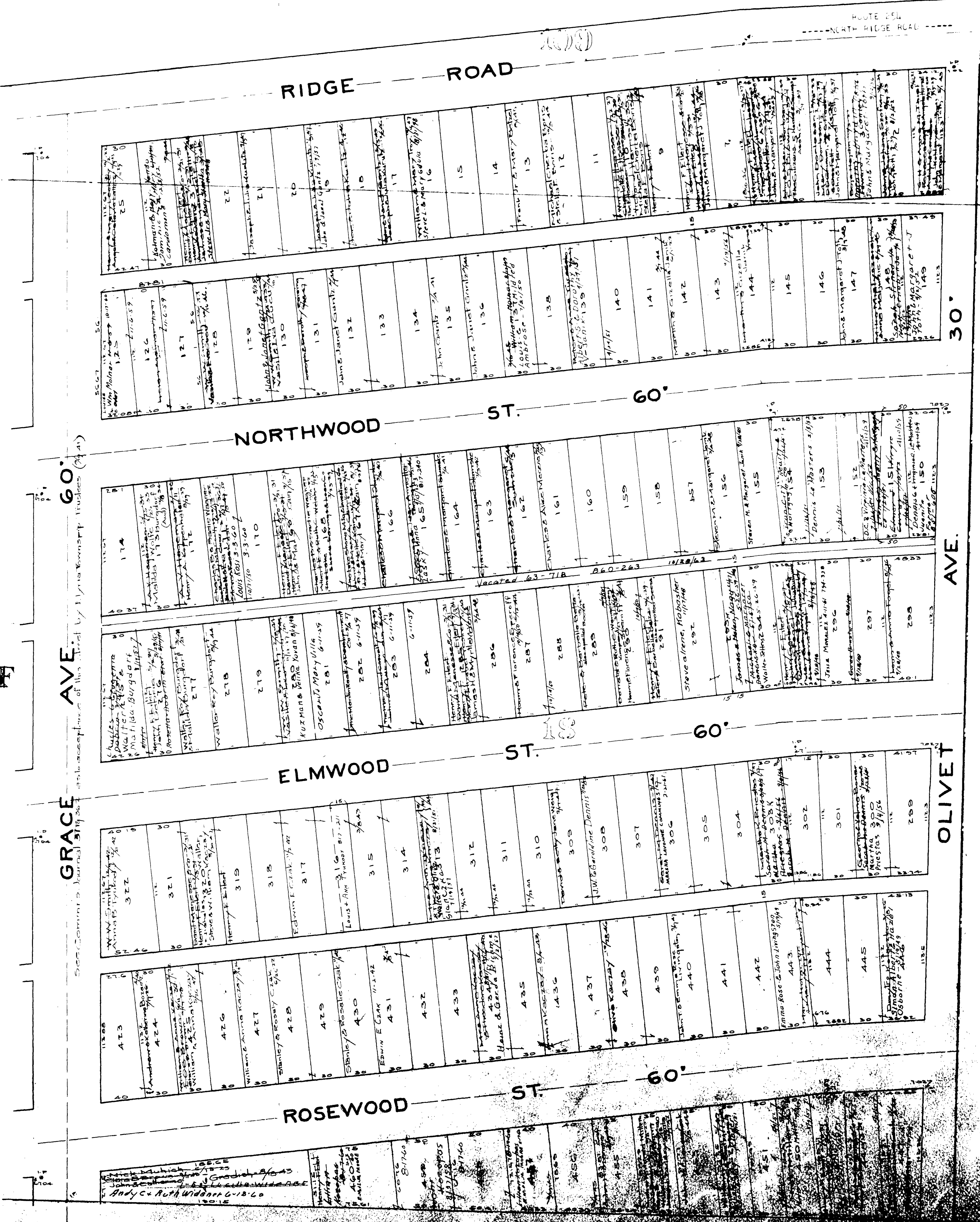
The May/Kelley Co.

The May/Kelley Co.

SHEFFIELD
ELYRIA

16F

GRACE AVE. 60'
NORTHWOOD ST. 60'
ELMWOOD ST. 60'
ROSEWOOD ST. 60'

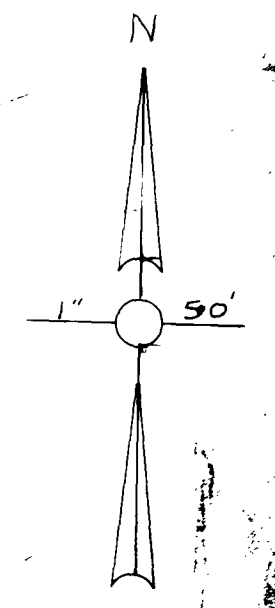


17

30'

AVE.

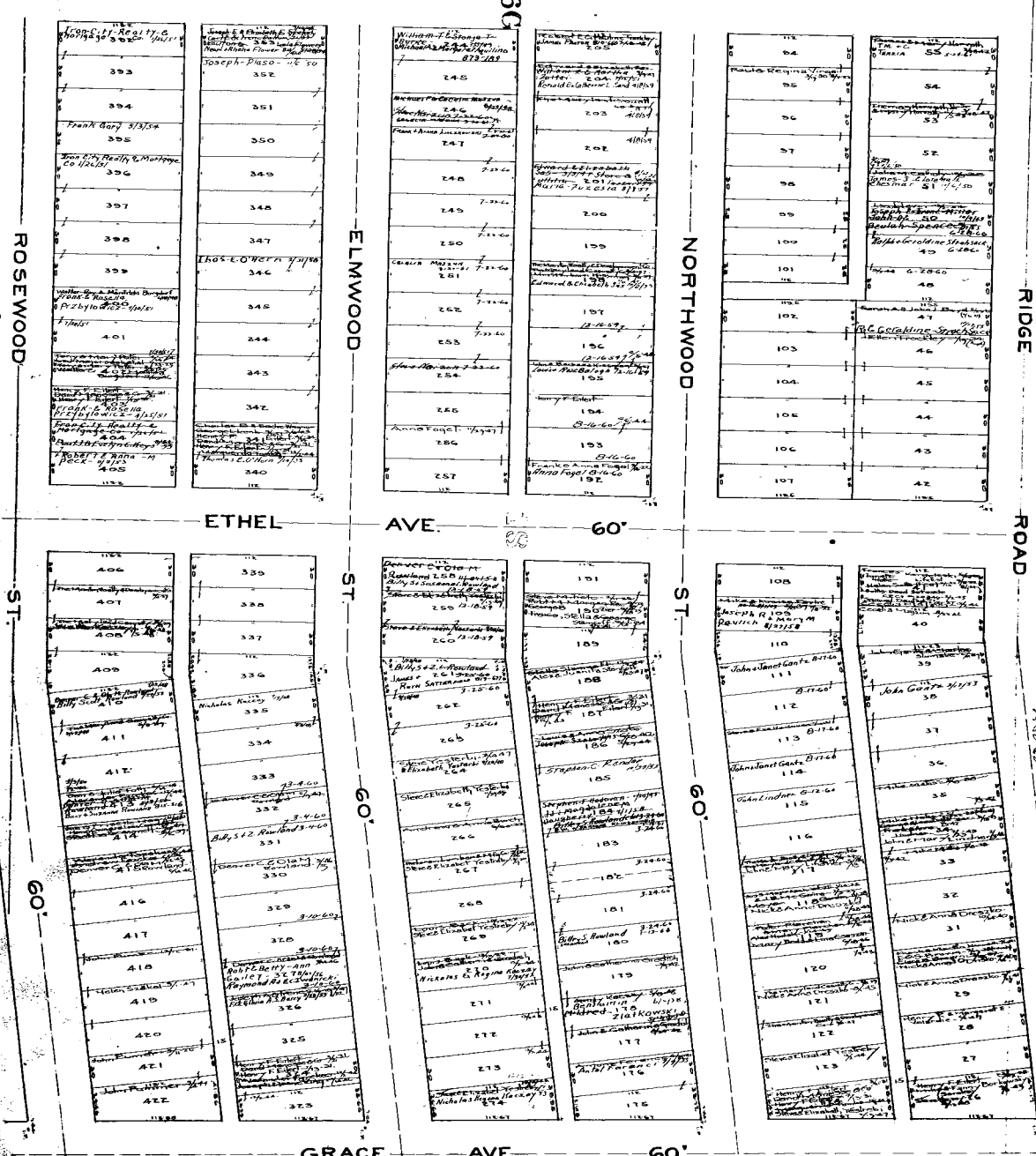
OLIVET



ELYRIA TOWNSHIP

COPYRIGHT 1962
U.S. CODE, TITLE 17
LORAIN COUNTY, OHIO

Reproduced by,
Allied Microfilm Corp.
Akron, Ohio



See County Comm'r's Journal 319, 322 ask acceptance of this plat by Elyria Twp Trustees 4/21

Copyright 1946
 U.S. GOVERNMENT PRINTING OFFICE
 JOHN H. COOPER, CHIEF
 REPRODUCED BY
 THE NATIONAL ARCHIVES
 COLLEGE PARK, MARYLAND

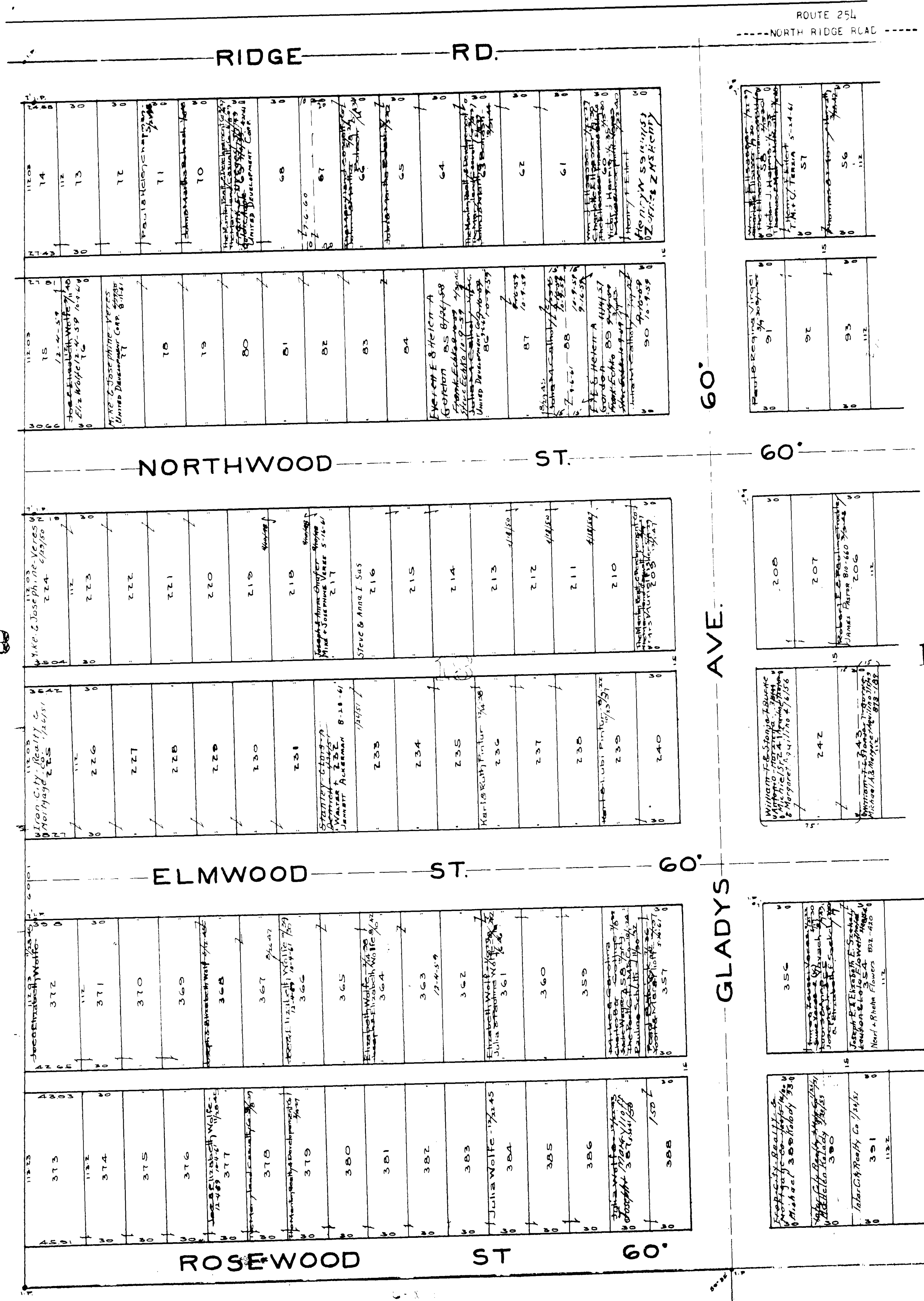
ELYRIA TOWNSHIP

SHEFFIELD
 ELYRIA

16-F

16 B

16 F

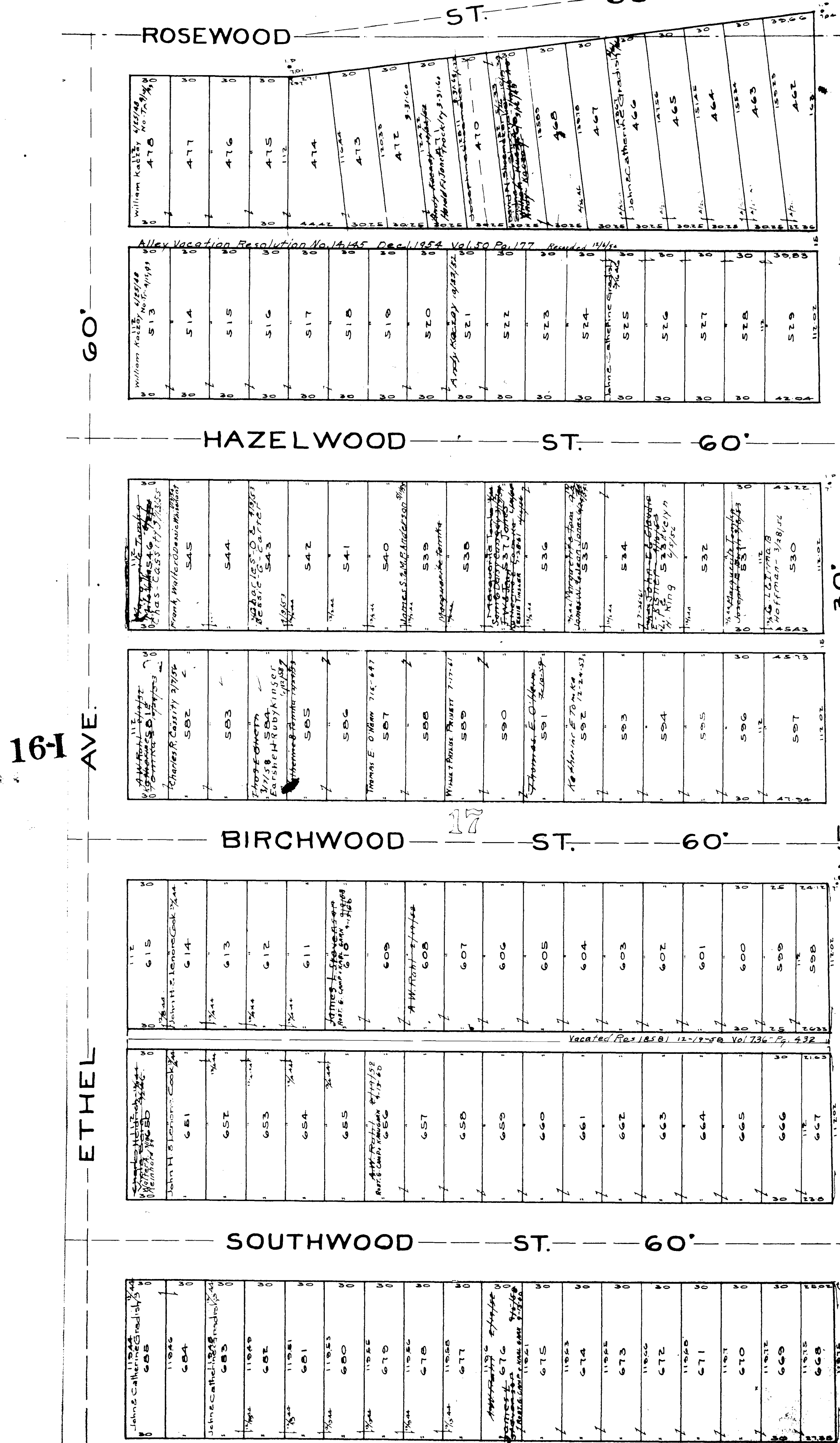


ELYRIA TOWNSHIP

COPYRIGHT 1962
U.S. CODE, TITLE 17
LORAIN COUNTY, OHIO

Reproduced by,
Allied Microfilm Corp.
Akron, Ohio

Clearview Subn Vol 10 Pg 8 Lots in blank - Henry E. Ellis



GRACE Ave. Commissioners' Journal 379, 362, 351, acceptance of this street by Elyria Township Trustees 9/4/41
 See County

ELYRIA TOWNSHIP

COPYRIGHT 1962
 U.S. CODE, TITLE 17
 LORAIN COUNTY, OHIO
 Reproduced by,
 Allied Microfilm Corp.
 Akron, Ohio

ROSEWOOD ST. 60'

485	MEMBERSHIP
484	MEMBERSHIP
483	
482	
481	
480	
489	
488	
487	
486	
485	
484	
483	
482	
481	
480	

497	
498	
499	
500	
501	
502	
503	
504	
505	
506	
507	
508	
509	
510	
511	
512	

HAZELWOOD ST. 60'

562	
561	
560	
559	
558	
557	
556	
555	
554	
553	
552	
551	
550	
549	
548	
547	

564	
565	
566	
567	
568	
569	
570	
571	
572	
573	
574	
575	
576	
577	
578	
579	
580	

BIRCHWOOD ST. 60'

621	
620	
629	
628	
627	
626	
625	
624	
623	
622	
621	
619	
618	
617	
616	
615	

633	
634	
635	
636	
637	
638	
639	
640	
641	
642	
643	
644	
645	
646	
647	
648	
649	

SOUTHWOOD ST. 60'

701	
700	
699	
698	
697	
696	
695	
694	
693	
692	
691	
690	
689	
688	
687	
686	

AVE. 60'

ETHEL

16H

COPYRIGHT 1962
U.S. CODE, TITLE 17
LORAIN COUNTY, OHIOReproduced by,
Allied Microfilm Corp.
Akron, Ohio

ELYRIA TOWNSHIP