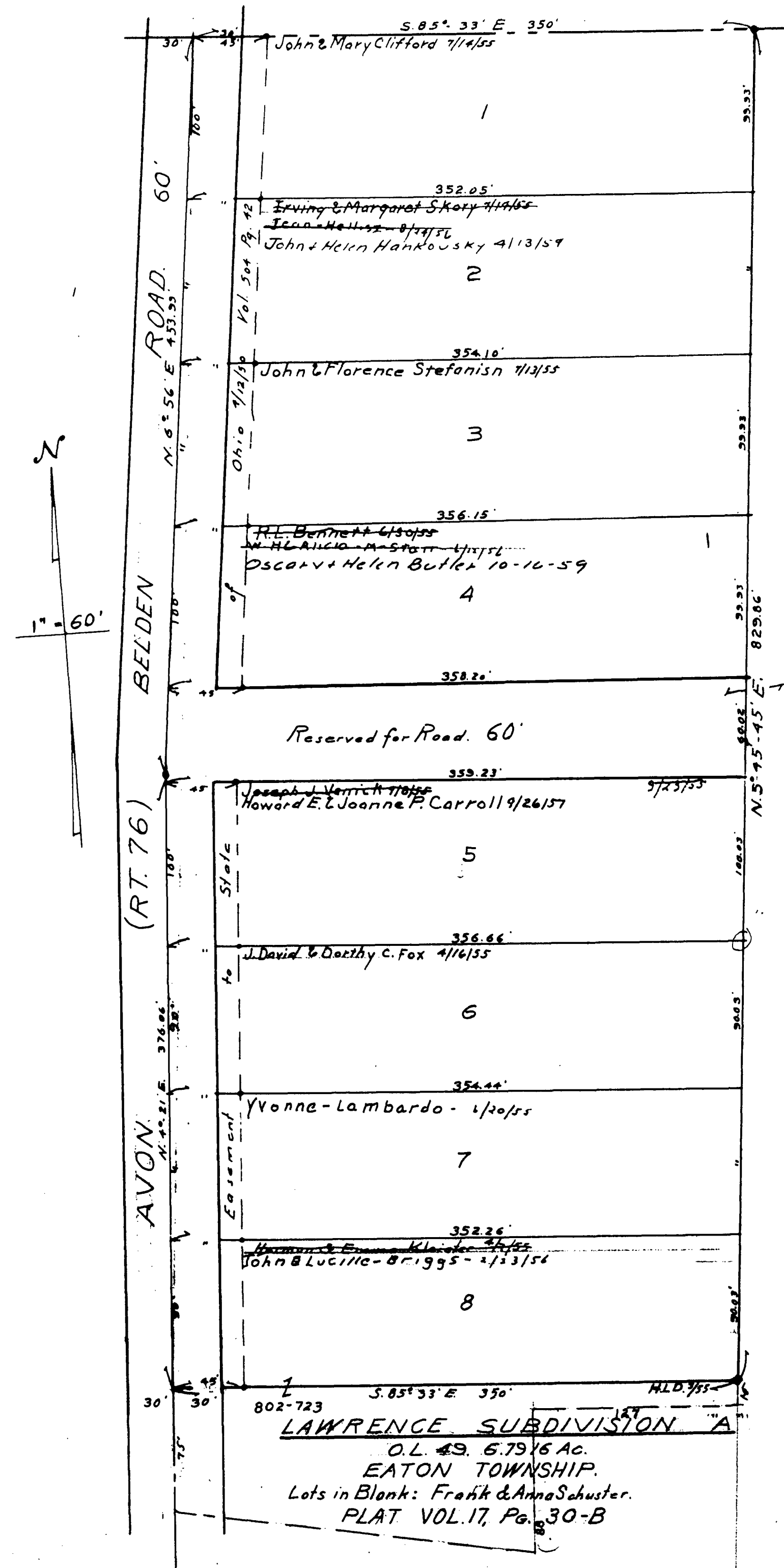




EATON TWP  
North Middle Part  
Scale 1" = 400'

COPYRIGHT 1962  
U.S. CODE, TITLE 17  
LORAIN COUNTY, OHIO  
Reproduced by,  
Allied Microfilm Corp.  
Akron, Ohio

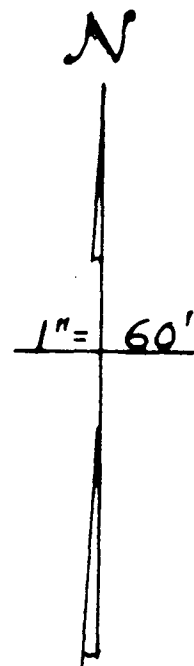
MAP OF  
EATON TOWNSHIP



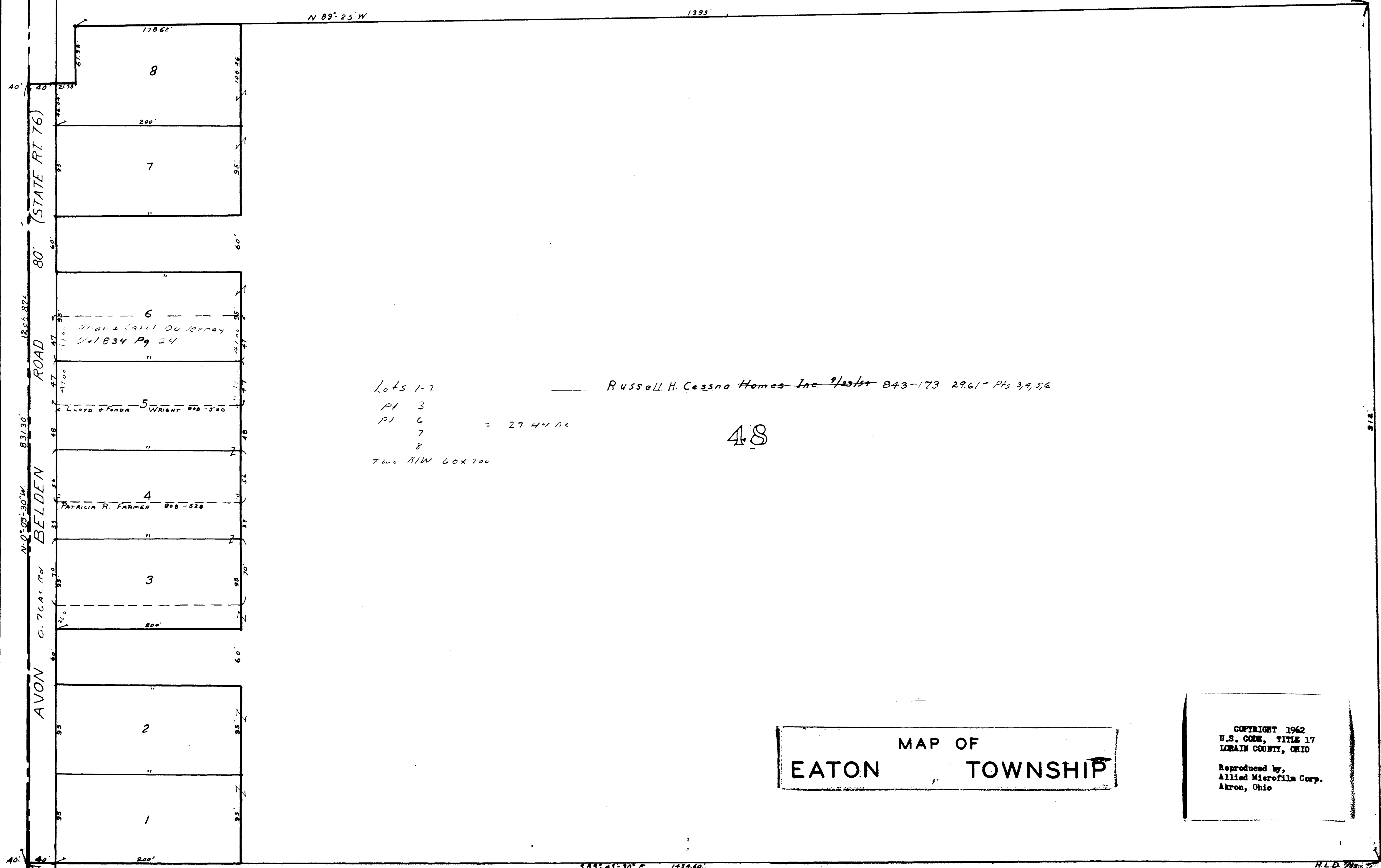
49  
 Frank & Anna Schuster 4/61

MAP OF  
 EATON TOWNSHIP

COPYRIGHT 1962  
 U.S. COPIES, TITLE 17  
 LARAIN COUNTY, OHIO  
 Reproduced by,  
 Allied Microfilm Corp.  
 Akron, Ohio



CESSNA - HOMES  
EATON TOWNSHIP  
O.L. 48  
Lots in Blank: Robert Cessna et al.  
PLAT VOL. 18, Pg. 12-A. 4.28 AC Plat  
STEWART E DAVIS.



Lots 1-2 \_\_\_\_\_ Russell H. Cessna Homes Inc. 9/23/54 843-173 29.61 - Pls 3, 4, 5, 6  
Pl 3  
Pl 6 = 27.44 AC  
7  
8  
Two R/W 60 x 200

48

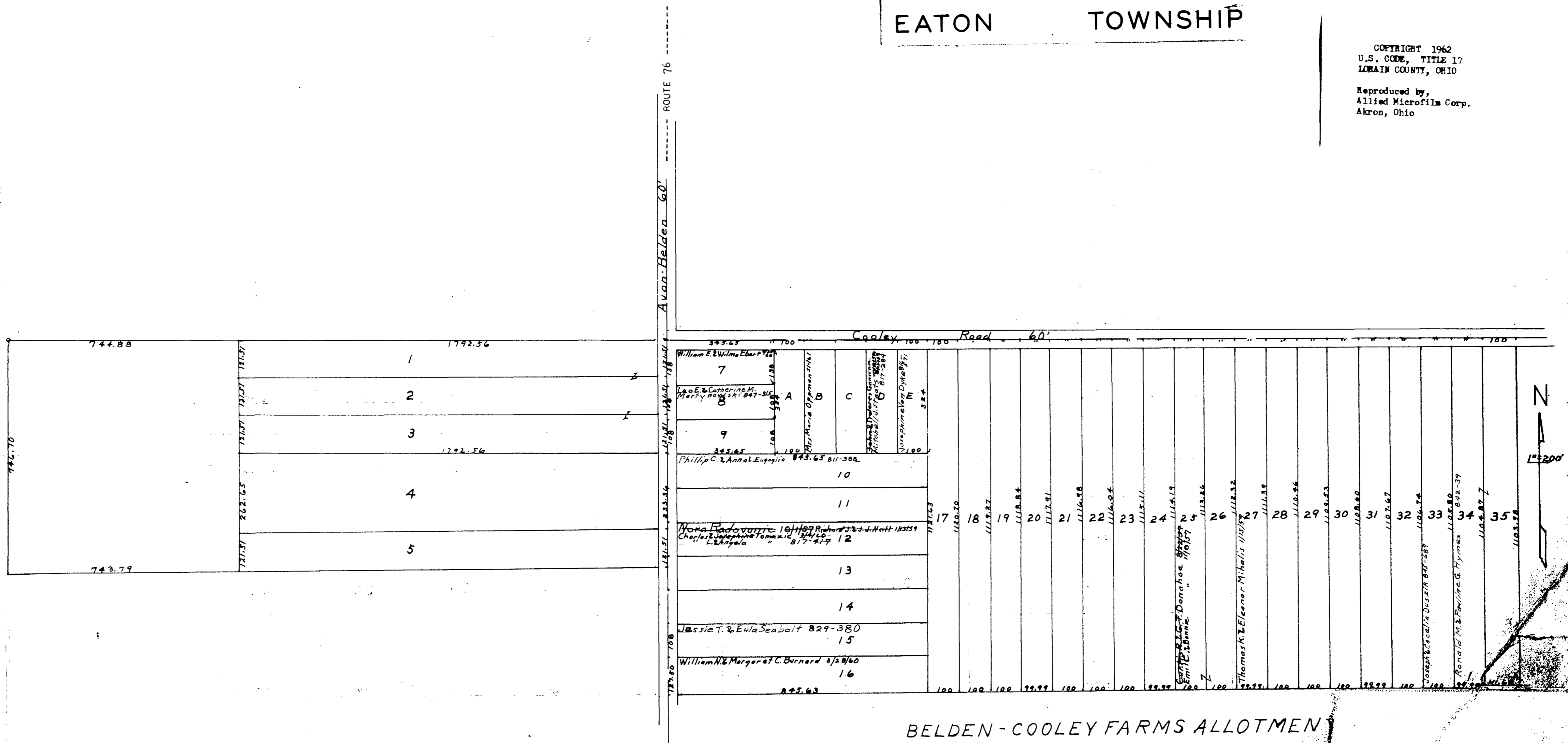
MAP OF  
EATON TOWNSHIP

COPYRIGHT 1962  
U.S. CODE, TITLE 17  
LORAIN COUNTY, OHIO  
Reproduced by  
Allied Microfilm Corp.  
Akron, Ohio

S 89° 45' 30" E 1454.60'  
CLARISSA A. NICHOLS.

MAP OF  
EATON TOWNSHIP

COPYRIGHT 1962  
U.S. CODE, TITLE 17  
LORAIN COUNTY, OHIO  
Reproduced by,  
Allied Microfilm Corp.  
Akron, Ohio



BELDEN-COOLEY FARMS ALLOTMEN