

ANNEXATION DV. 754-1 REL. 1
VERMILION VILLAGE FIRE CO.

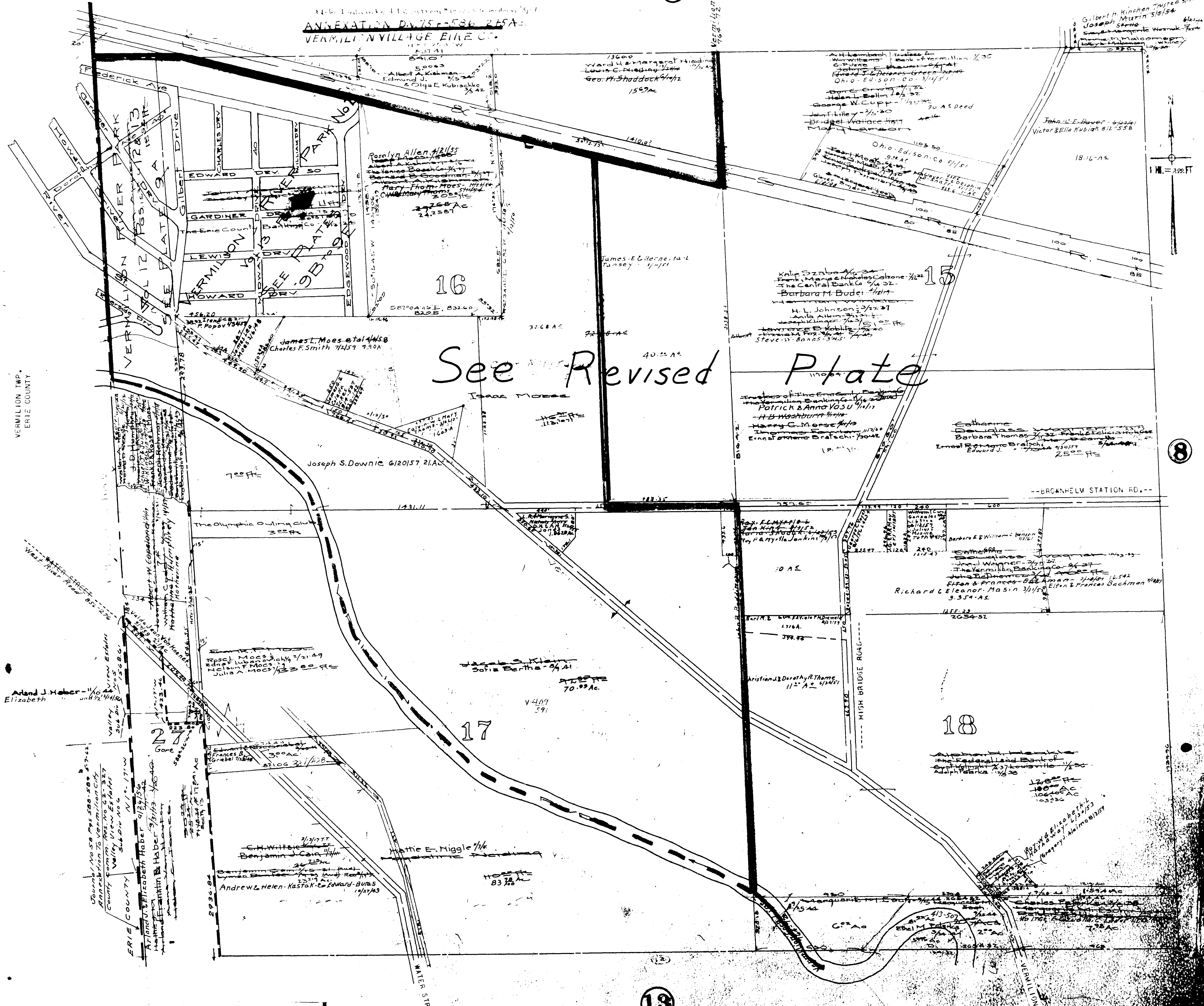
ANNEXATION DV. 754-586 245A-1
VERMILION VILLAGE FIRE CO.

BROWNHELM TWP

North West Part.

Scale 1"=300'

9



See Revised Plate

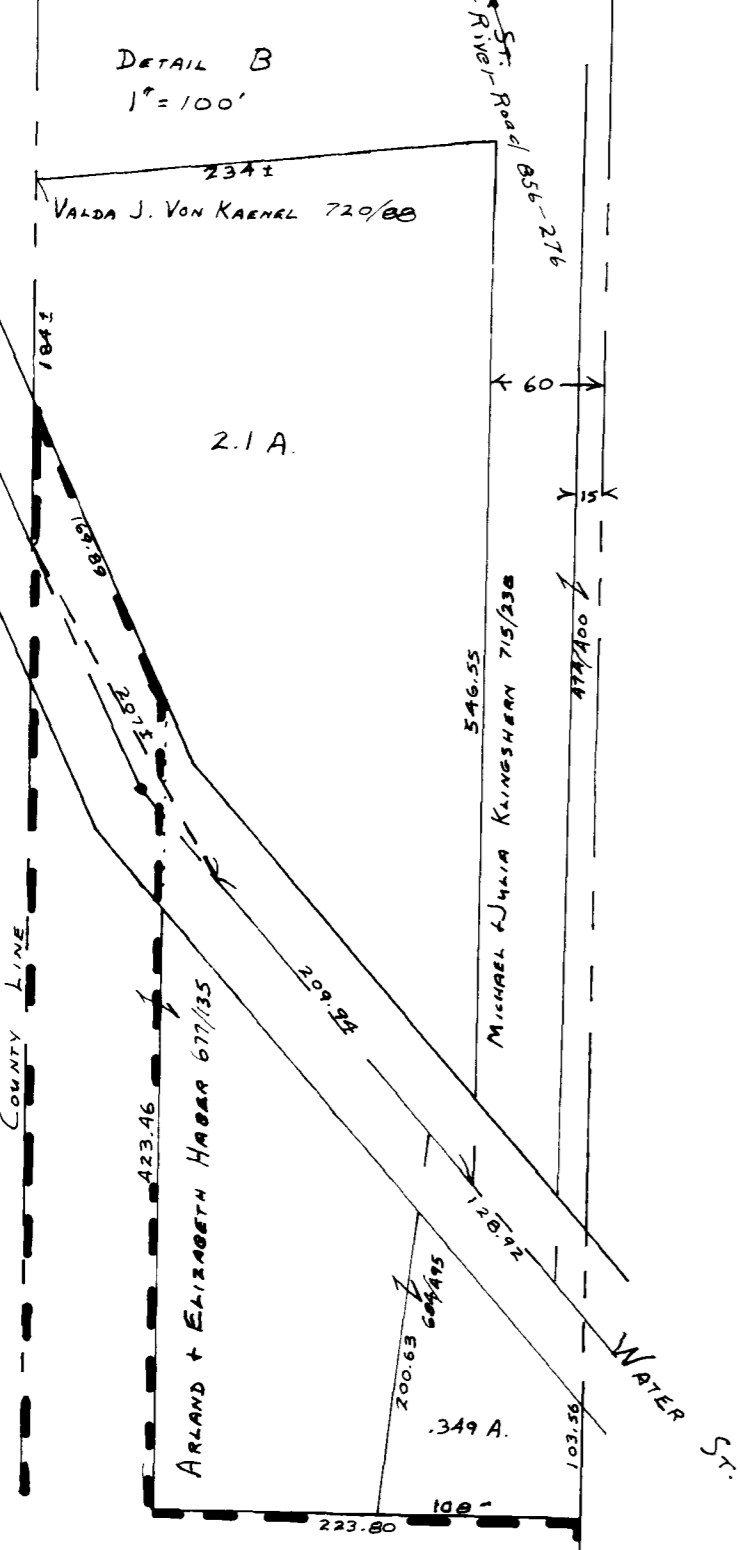
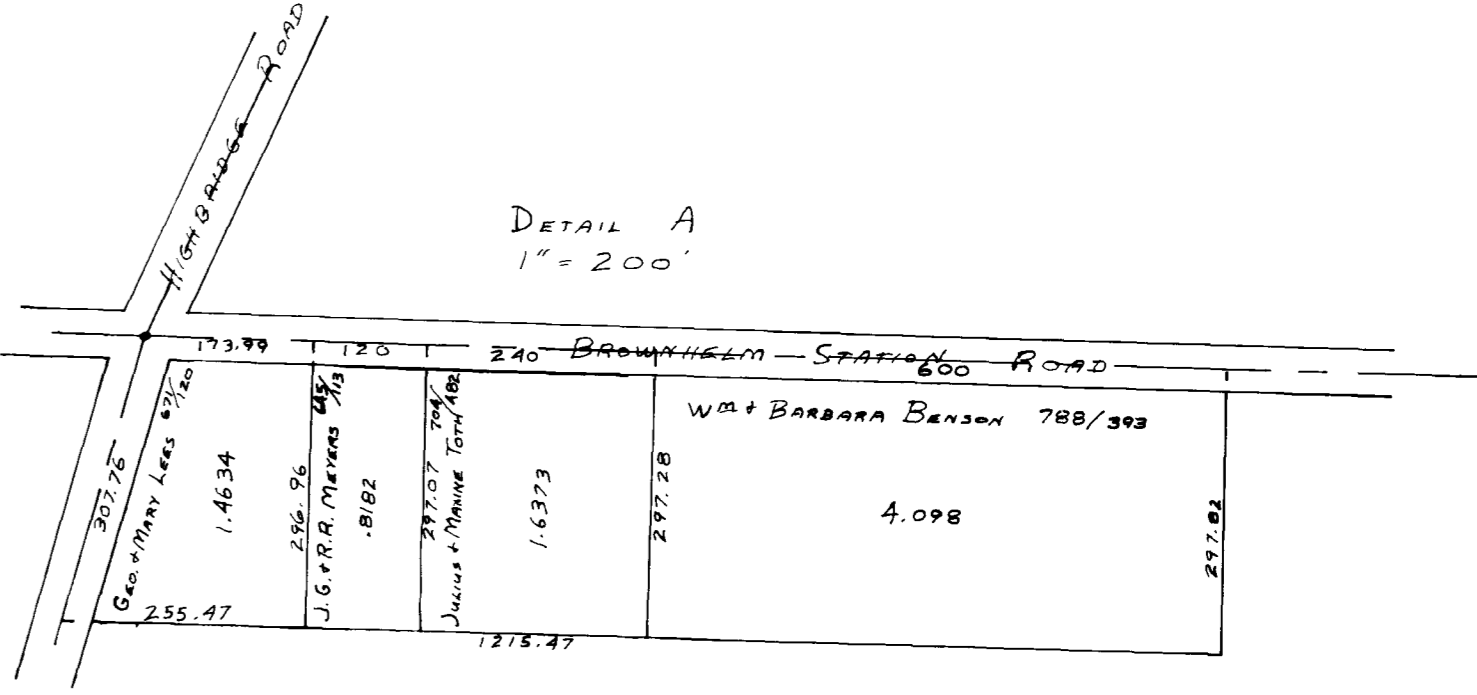
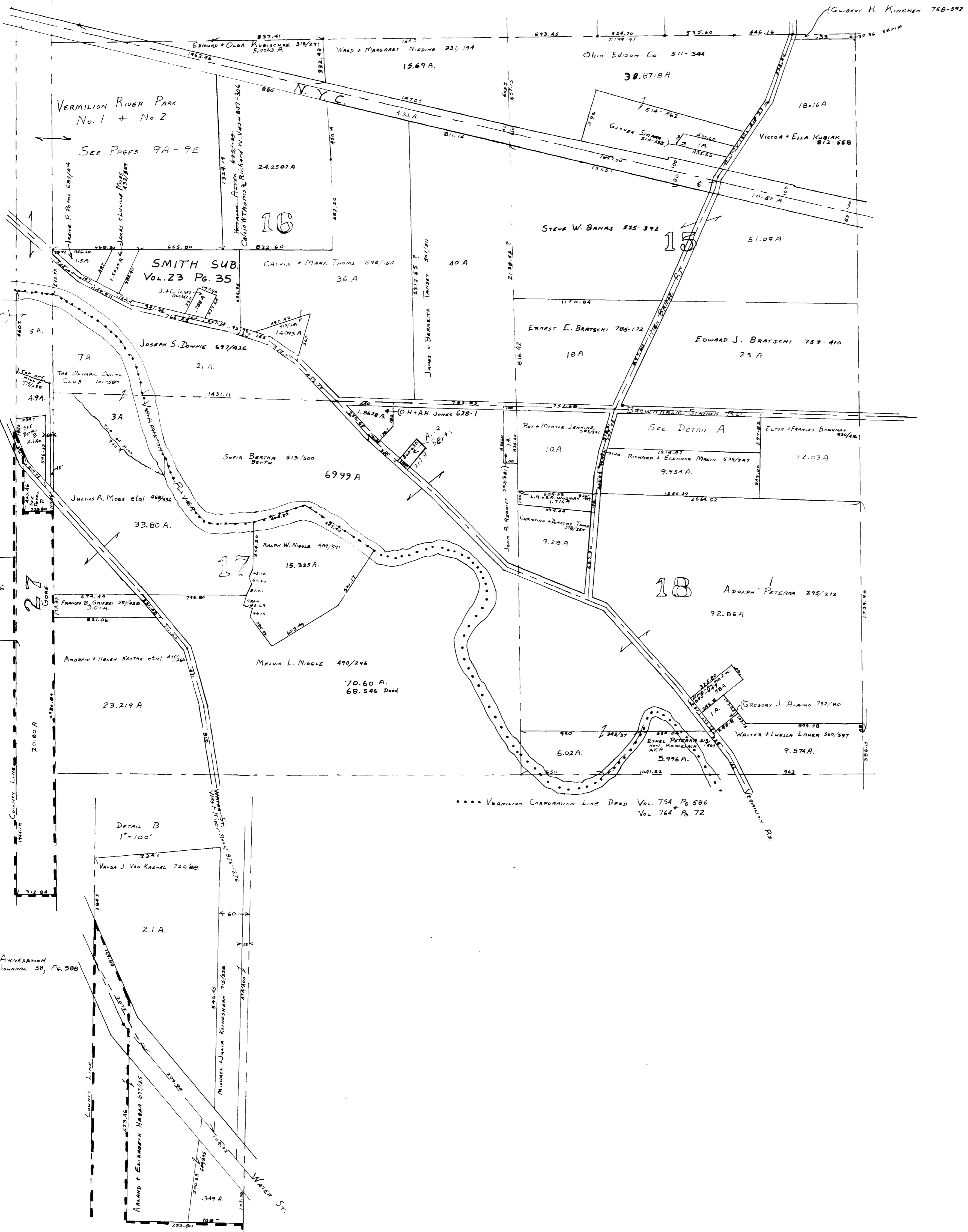
VERMILION TWP.
ERIE COUNTY

8

COPYRIGHT 1962
U.S. CODE, TITLE 17
LORAIN COUNTY, OHIO
Reproduced by,
Allied Microfilm Corp.
Akron, Ohio

BROWNHELM TOWNSHIP

10



--- VERMILION ANNEXATION
 COMMISSIONERS JOURNAL 58, Pg. 588
 Deed V. 843-140

Vermilion River Park Vol 12 Pgs 12-13
Lots in blank - The Erie County Banking Co



COPYRIGHT 1962
U.S. CODE, TITLE 17
LORAIN COUNTY, OHIO
Reproduced by:
Allied Microfilm Corp.
Akron, Ohio

BROWNHELM TOWNSHIP

Vermilion River Park Allot No 2 Vol 13 Pgs 4-5.
Lots in blank: The Erie County Banking Co.

The Erie County Banking Co. 3/1/78
The Erie County Banking Co. 7/1/40
The Erie County Banking Co. 7/1/58



BROWNHELM TOWNSHIP

COPYRIGHT 1962
U.S. CODE, TITLE 17
LORAIN COUNTY, OHIO
Reproduced by,
Allied Microfilm Corp.
Akron, Ohio

Vermilion River Park Allot No 2 Vol 13 Pgs 4-5
Lots in blank: The Erie County Banking Co
The Erie County Banking Co
Trustee: The Erie County Banking Co
Title G. Knapp - 74-00 - Western Ohio Properties 7/31/58



BROWNHELM TOWNSHIP

COPYRIGHT 1962
U.S. CODE, TITLE 17
LORAIN COUNTY, OHIO
Reproduced by,
Allied Microfilm Corp.
Akron, Ohio

Vermilion River Park Allot No 2 Vol 13 Pgs 4-5
Lots in blank: The Erie County Banking Co.
Trustees of The Erie County Trust Co. 7/31/58
Western Ohio Properties Inc 7/31/58



BROWNHELM TOWNSHIP

COPYRIGHT 1962
U.S. CODE, TITLE 17
LORAIN COUNTY, OHIO

Reproduced by,
Allied Microfilm Corp.
Akron, Ohio

BROWNHELM TOWNSHIP

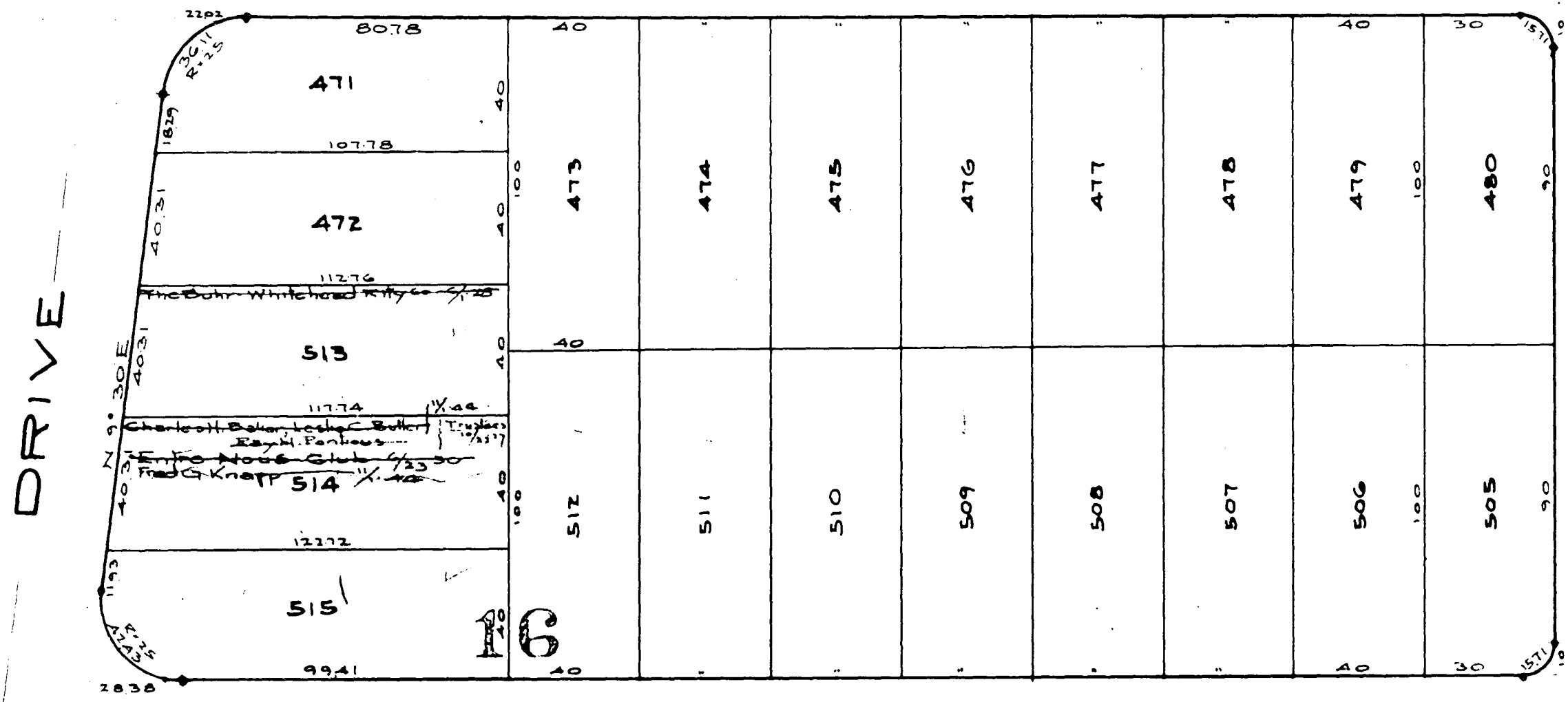
COPYRIGHT 1962
U.S. CODE, TITLE 17
LORDAIN COUNTY, OHIO
Reproduced by:
Allied Microfilm Corp.
Akron, Ohio

RIVER ST.
Vermilion Road - Ord 821

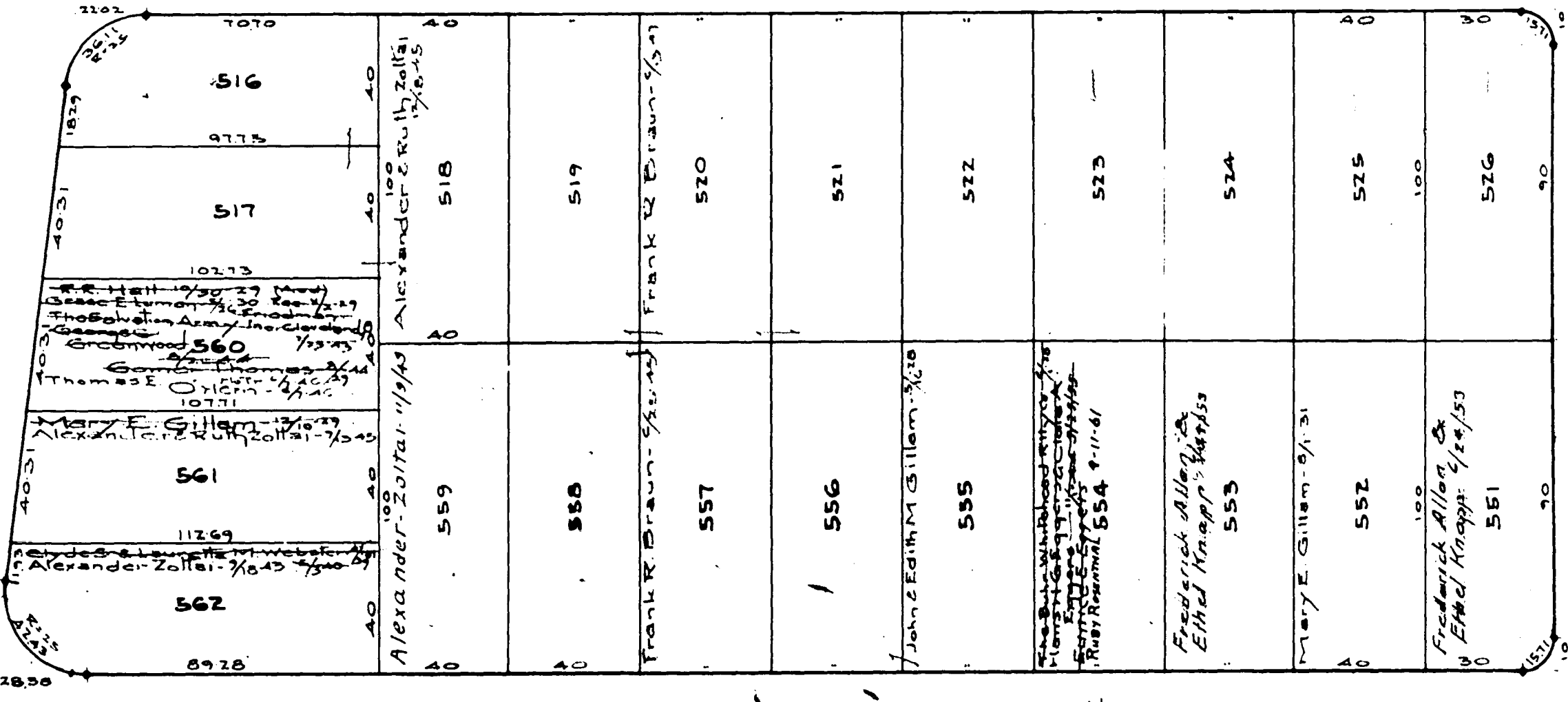
Vermilion River Park Allot No 2 Vol 13 Pgs 45
Lots in blank - The Erie County Banking Co The Bldr Whitehead Rly Co The Erie County Banking Co
EDWARD DRIVE 50'



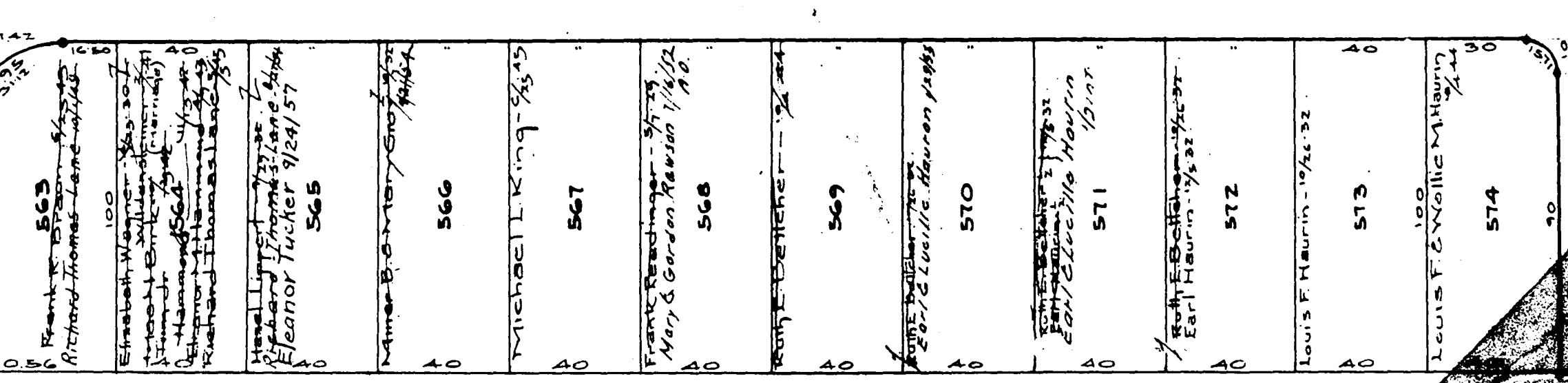
GARDINER DRIVE 50'



LEWIS DRIVE 40'



HOWARD DRIVE 50'



GILBERT DRIVE

50'

40'

MIDWAY DRIVE