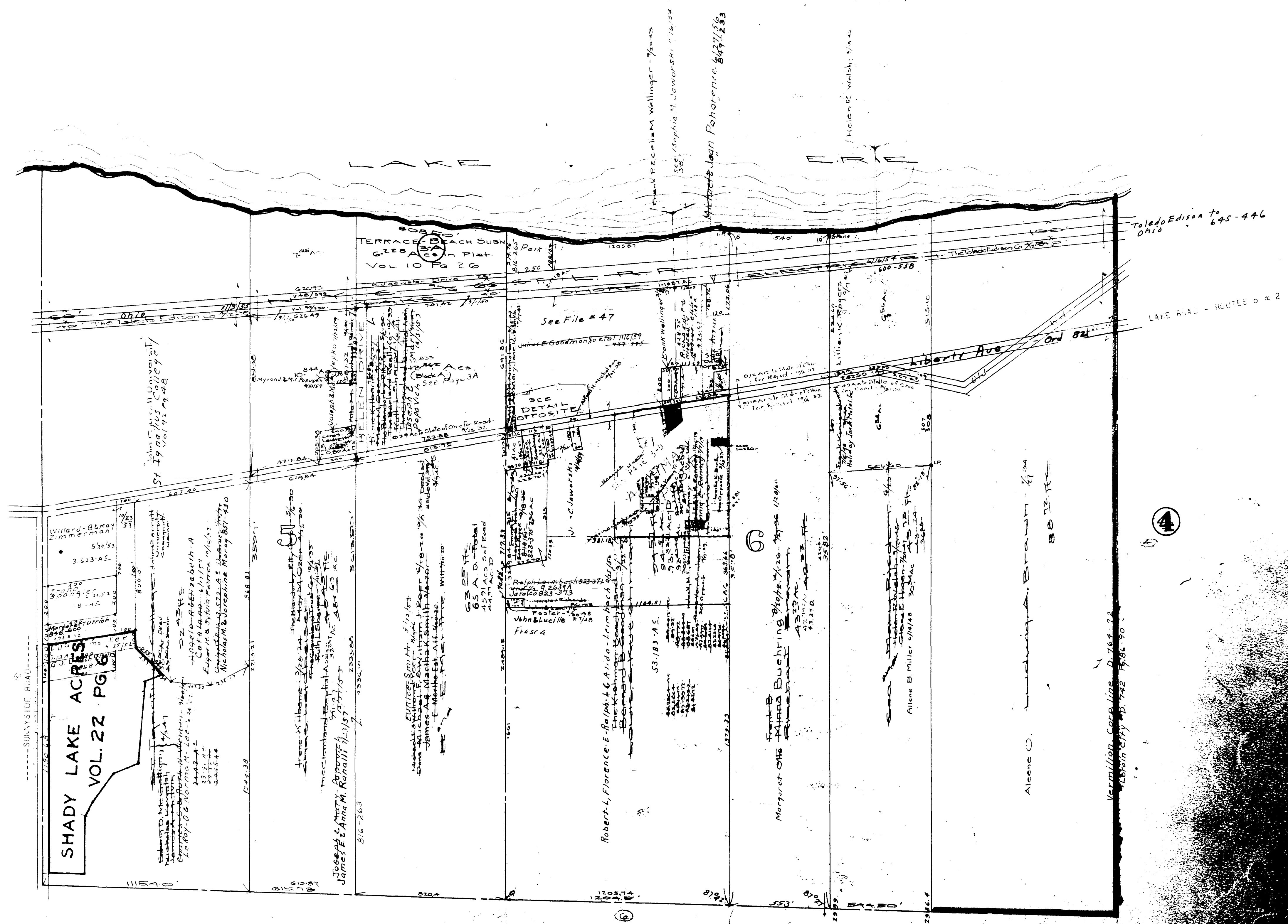


Harvey Nicholson 7/1/39

BROWNHHELM TWP  
North middle part. Scale - 1/2" = 300'



2

4

6

BK. 1  
TOTAL  
34

# BROWNHHELM TOWNSHIP

COPYRIGHT 1962  
U.S. CODE, TITLE 17  
LORAIN COUNTY, OHIO

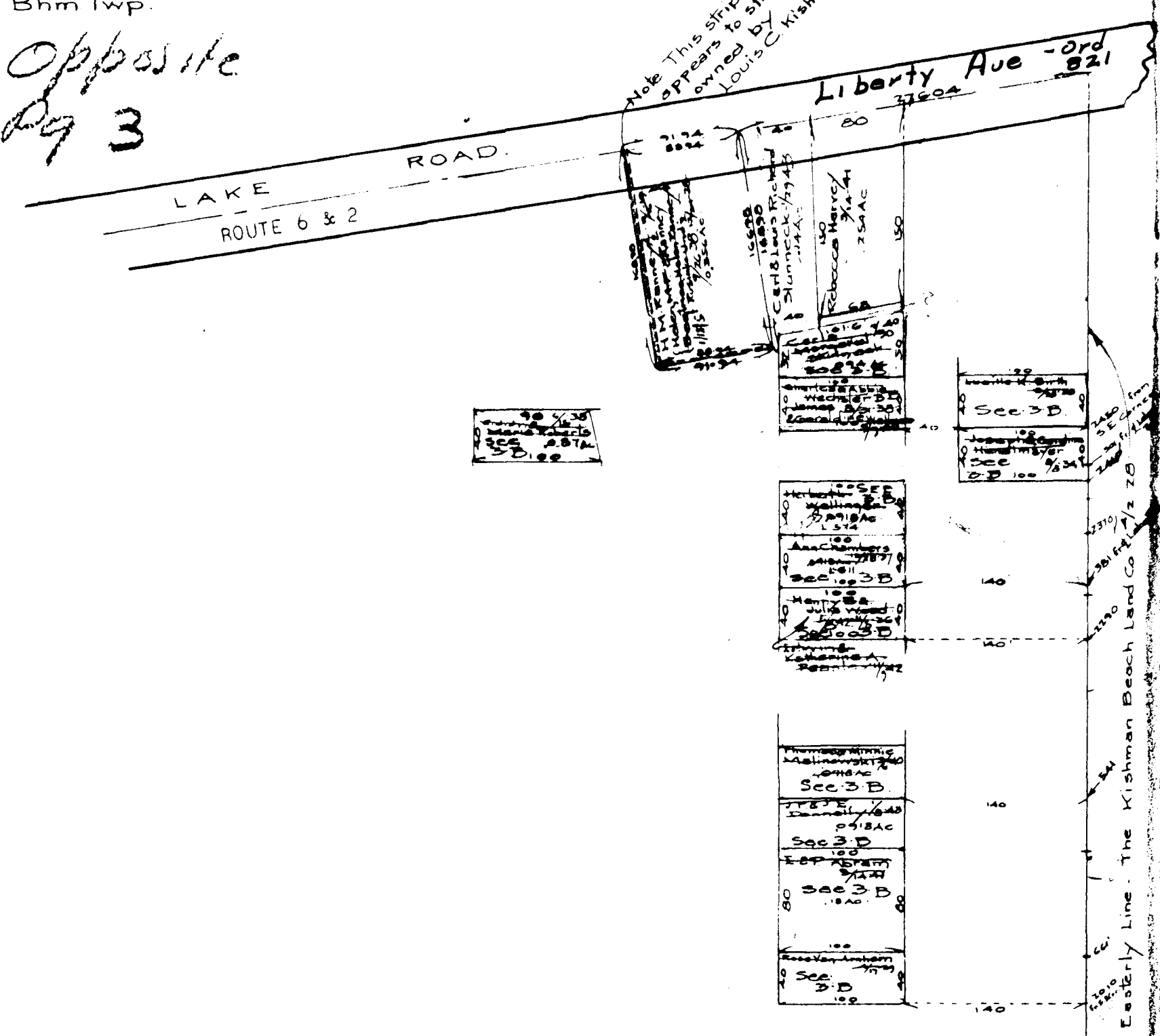
Reproduced by,  
Allied Microfilm Corp.  
Akron, Ohio

BK. 1  
1

Oppo. Pg 3  
Bhm Twp.

Opposite  
Pg 3

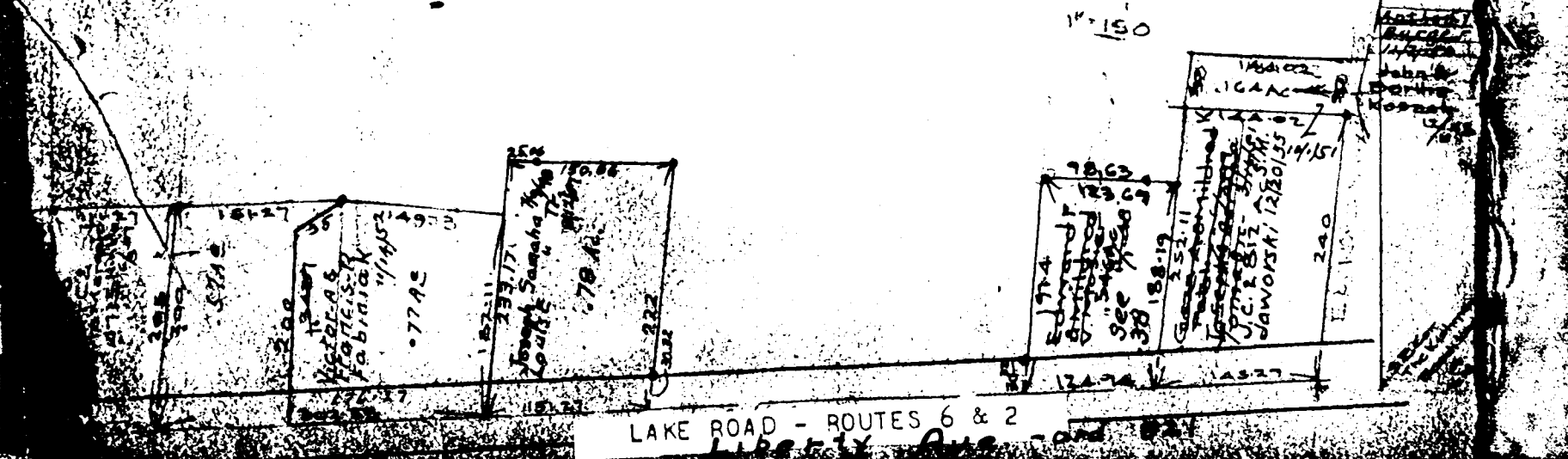
OPP 3

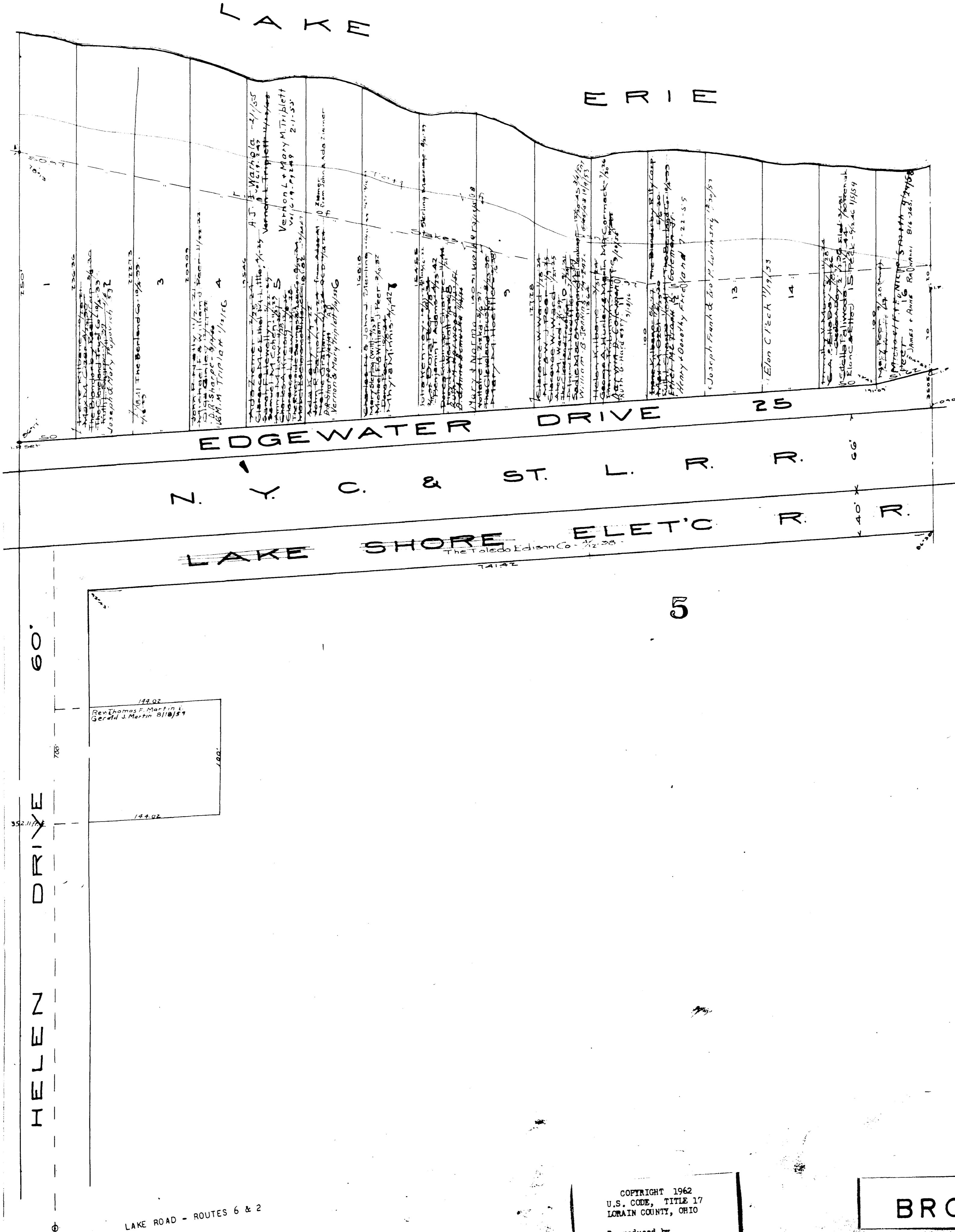


# BROWNHELM TOWNSHIP

COPYRIGHT 1962  
U.S. CODE, TITLE 17  
LORAIN COUNTY, OHIO

Reproduced by,  
Allied Microfilm Corp.  
Akron, Ohio





HELEN DRIVE

60'

LAKE ROAD - ROUTES 6 & 2

COPYRIGHT 1962  
U.S. CODE, TITLE 17  
LORAIN COUNTY, OHIO

Reproduced by,  
Allied Microfilm Corp.  
Akron, Ohio

BROWNHELM TOWNSHIP

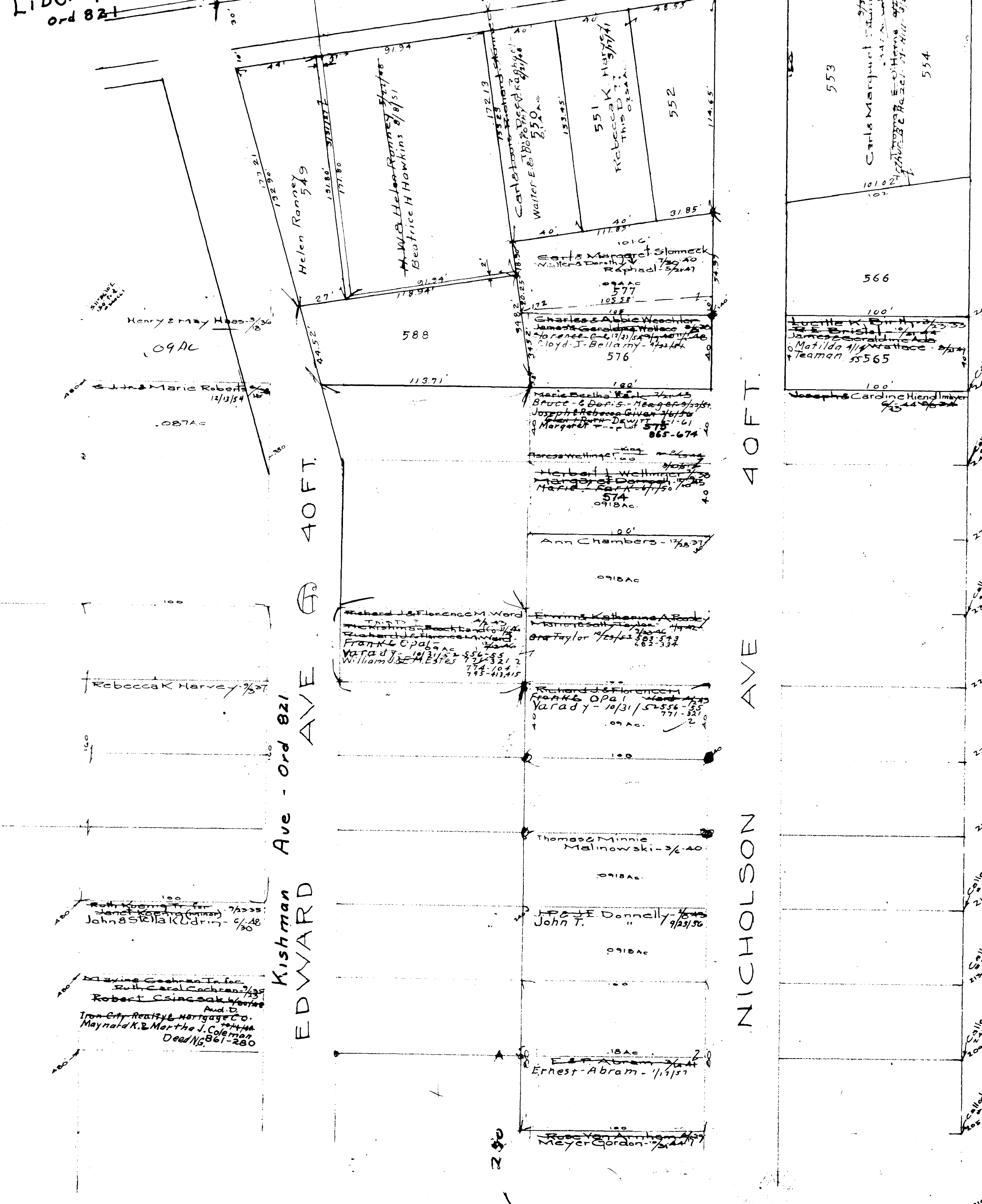
Terrace Beach Vol 10 Pg 26  
Lots in blank - W.F. & M.J. Peet

Liberty Ave  
ord 821

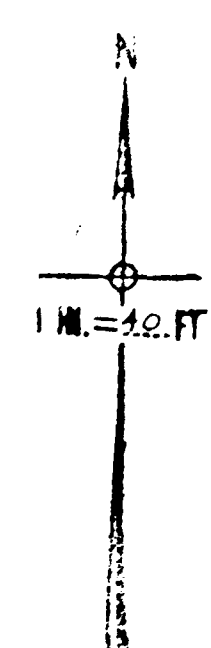
LAKE OHIO STATE HIGHWAY

60 FT.

South Side of Road Jan 1951



Lines in black are corrected as of Jan 1951  
Ray Hollis Surveyor



KISHMAN BEACH  
PROPOSED  
O.L.G. BROWNHELM TWP  
Scale 1" = 40'

COPYRIGHT 1962  
U.S. CODE, TITLE 17  
LOHAIN COUNTY, OHIO  
Reproduced by,  
Allied Microfilm Corp.  
Akron, Ohio

BROWNHELM TOWNSHIP