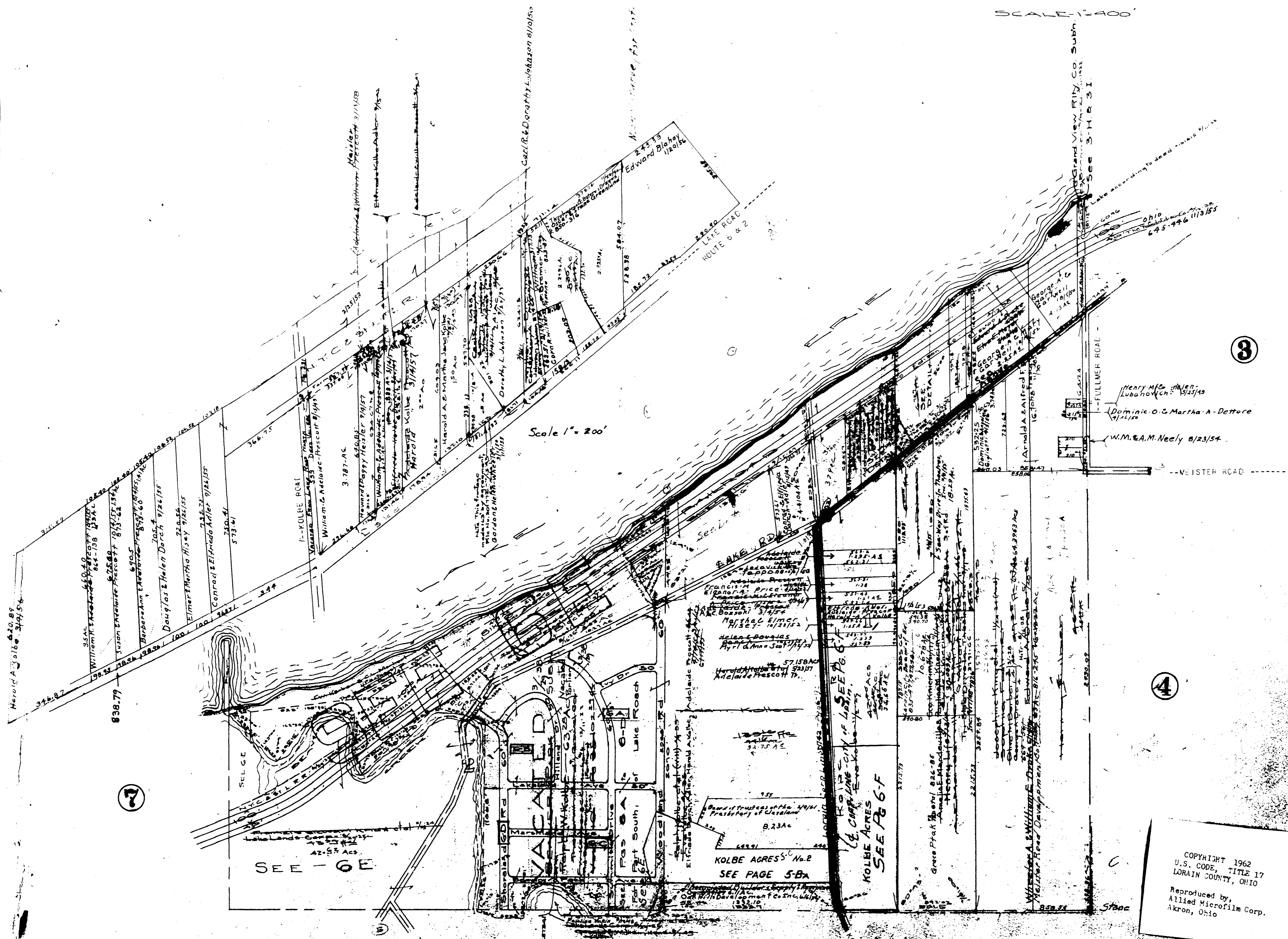
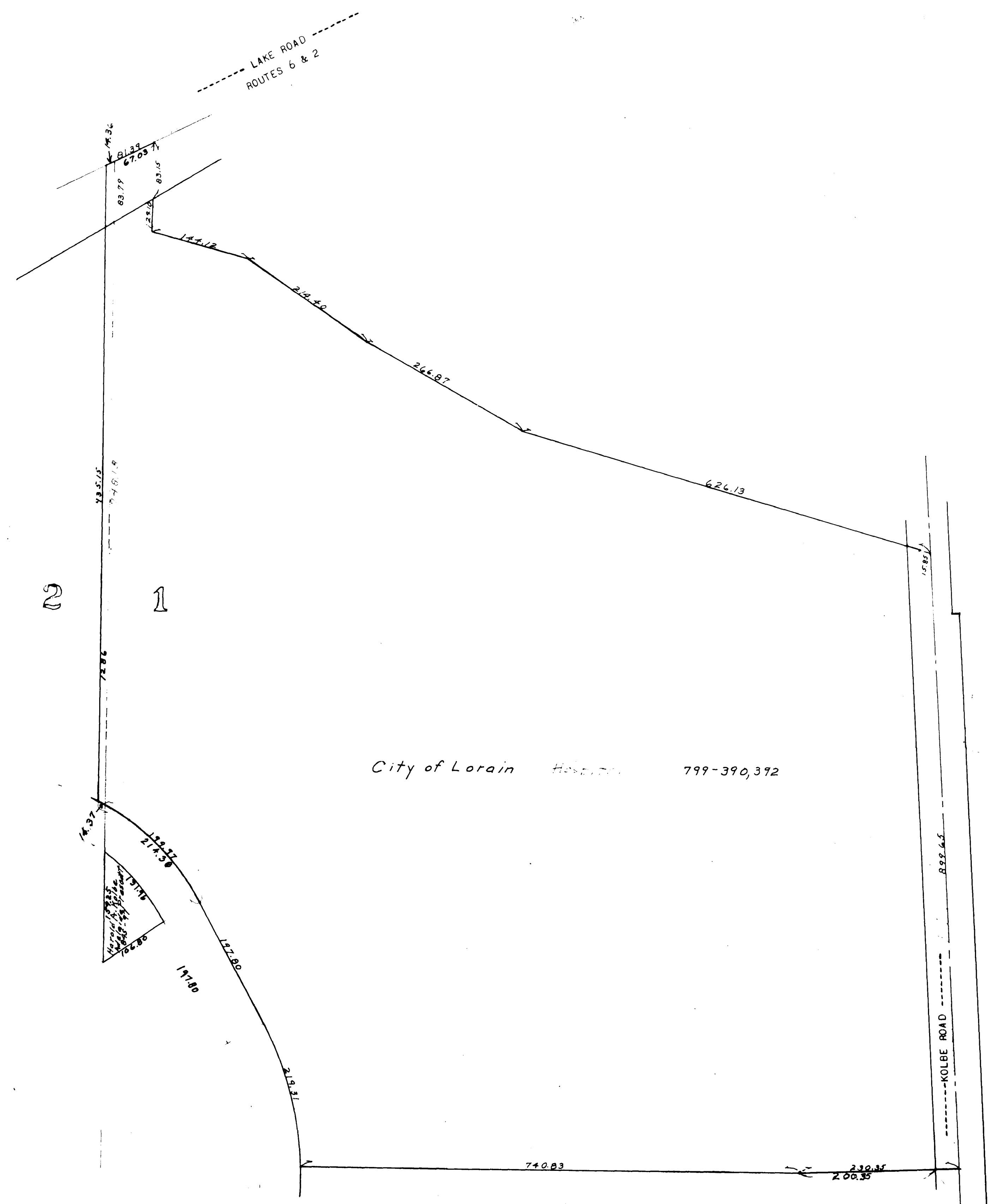


BLACK RIVER TWP
N.E. PART TRACT 3
SCALE 1"=400'



COPYRIGHT 1962
U.S. CODE, TITLE 17
LORAIN COUNTY, OHIO
Reproduced by,
Allied Microfilm Corp.
Akron, Ohio

BLACK RIVER
TOWNSHIP



2 1

COPYRIGHT 1962
 U.S. CODE, TITLE 17
 LORAIN COUNTY, OHIO
 Reproduced by,
 Allied Microfilm Corp.
 Akron, Ohio

BLACK RIVER
 TOWNSHIP

All Vacated except Lots 56 to 59 File No 258652
 Vol 10 Pg 35
 2/9 38

Lots in blank: The Lorain Sand & Gravel Co.
 The Kebab & Co. Morhart-Partners
 The Beaver Park Co. Inc.
 The Lorain Sand & Gravel Co.
 The Lorain Sand & Gravel Co.
 The Lorain Sand & Gravel Co.
 The Lorain Sand & Gravel Co.
 Ralph W. Kolbe, Jr.
 File 62324A
 Elfrieda Darch, Adelaide Prossett, Harold Kolbe, - 1/15 41 - 122740
 This D-1 Boundary Indicated thus -
 See also 122741 (95 8)

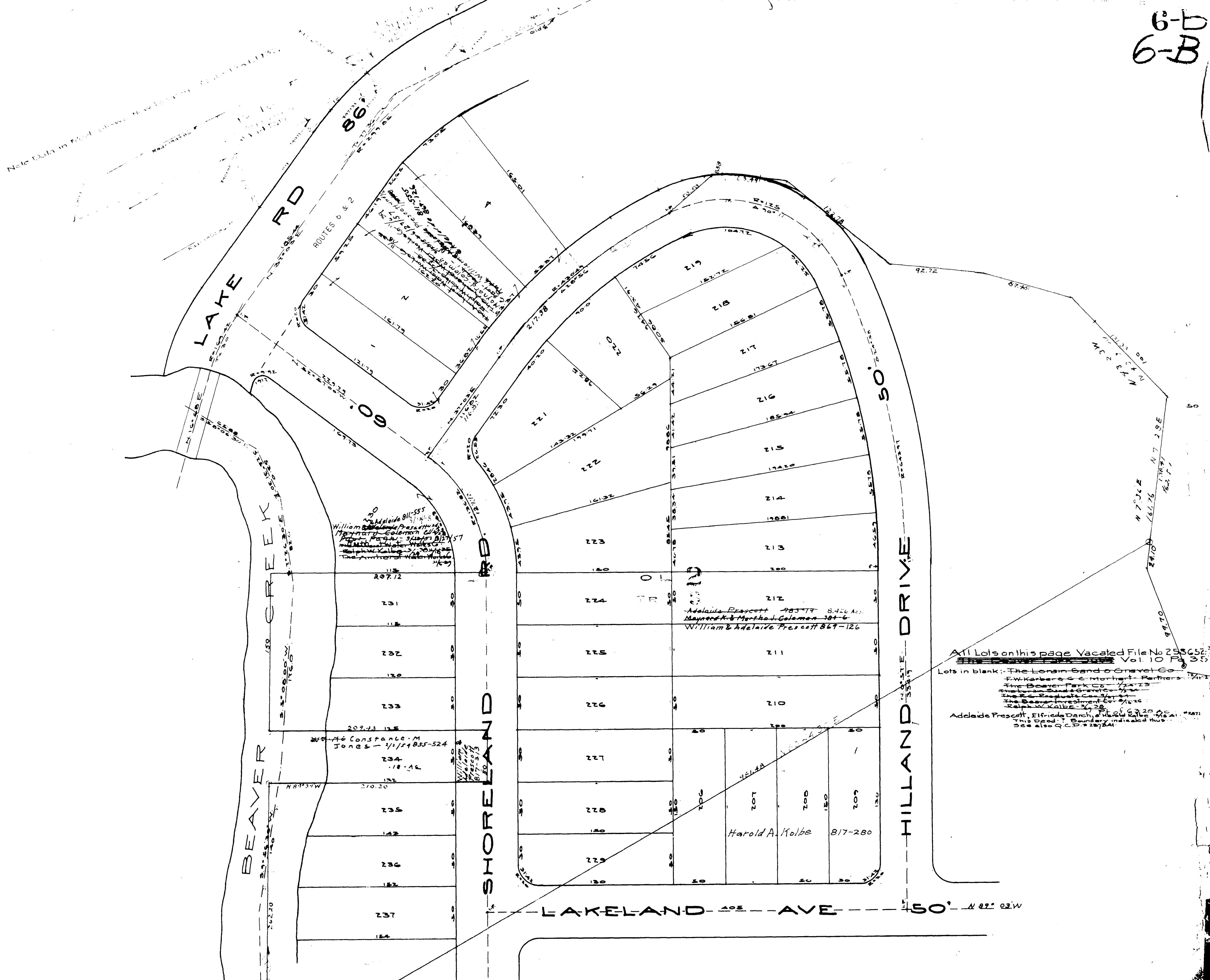


COPYRIGHT 1962
 U.S. CODE, TITLE 17
 LORAIN COUNTY, OHIO
 Reproduced by,
 Allied Microfilm Corp.
 Akron, Ohio

BLACK RIVER
 TOWNSHIP

WOODLAND ROAD

6-A



All Lots on this page Vacated File No 255652
 Vol. 10 Pg 35
 Lots in blank: The Lorain Sand & Gravel Co.
 F.W. Kober & C. Morhart Partners
 Five Beaver Park Co. 1/24/23
 The Lorain Sand & Gravel Co. 1/24/23
 The Beaver Park Co. 1/24/23
 The Beaver Investment Co. 1/24/23
 Ralph W. Kolbe 1/24/23
 Adelaide Prescott, Elfrida Dorch, & Harold A. Kolbe
 This Speedy Boundary Indicated Thus
 See also Q.C.P. 1/24/23

COPYRIGHT 1962
 U.S. CODE, TITLE 17
 LORAIN COUNTY, OHIO
 Reproduced by,
 Allied Microfilm Corp.
 Akron, Ohio

BLACK RIVER
 TOWNSHIP

6A

Vol. 10 Pg 35
 Lots in blank: The Lorain Sand & Gravel Co.,
 F. W. Barber & Co.,
 The Lorain Sand & Gravel Co.,
 E. H. Darch, Adelaide Prescott & Harold Kolbe
 The Lorain Sand & Gravel Co.,
 The Lorain Sand & Gravel Co.,
 The Lorain Sand & Gravel Co.,
 See Also 700-258652

6-C



COPYRIGHT 1962
 U.S. CODE, TITLE 17
 LORAIN COUNTY, OHIO
 Reproduced by,
 Allied Microfilm Corp.
 Akron, Ohio

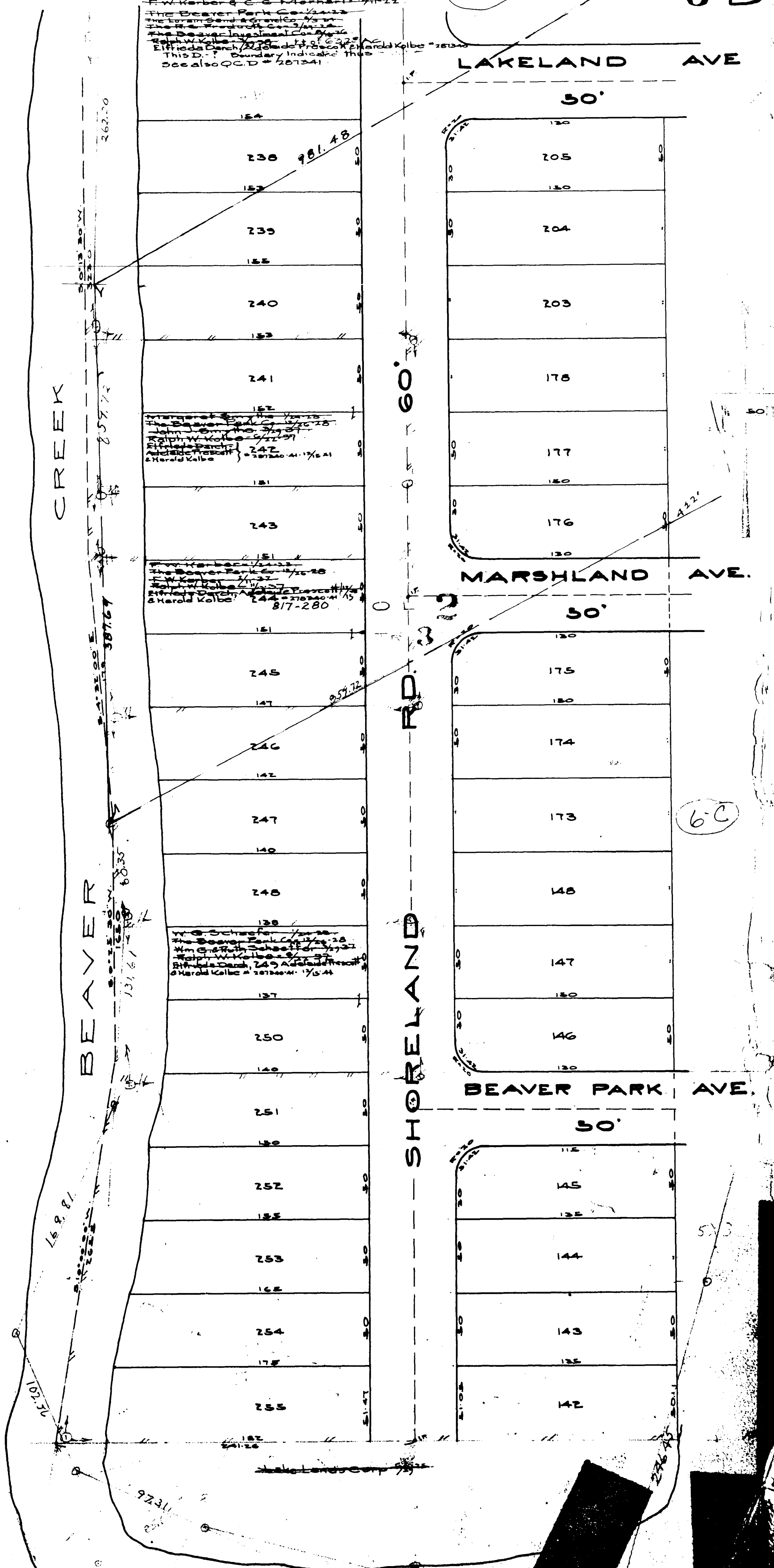
BLACK RIVER
 TOWNSHIP

69

6-B

6-D

Lots in blank - The Lorain Sand & Gravel Co.
The Beaver Park Co.
The Lorain Sand & Gravel Co.
The Beaver Park Co.
The Lorain Sand & Gravel Co.
The Beaver Park Co.
The Lorain Sand & Gravel Co.
The Beaver Park Co.
This D. T. Boundary indicates this
See also Q.C.D. # 201341



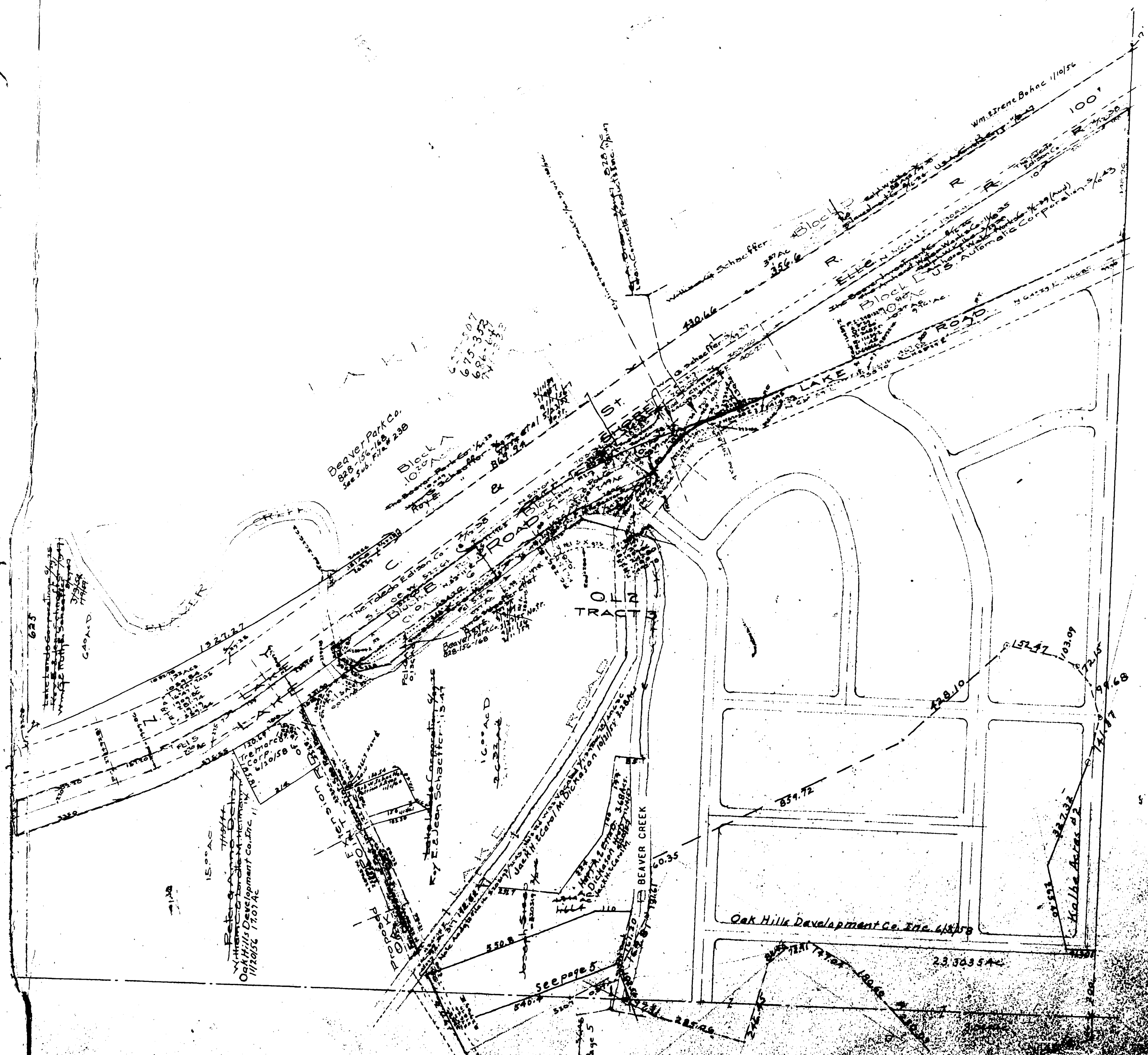
6-C

COPYRIGHT 1962
U.S. CODE, TITLE 17
LORAIN COUNTY, OHIO

Reproduced by,
Allied Microfilm Corp.
Akron, Ohio

BLACK RIVER
TOWNSHIP

Note: Data in Red pertains to the Location of Lake Road on land secured by Appropriation Proceedings See Appropriation Record 3 Page 593 and Record 4, Pages 16, 32, 59 and 62. Data in Yellow pertains to Beaver Park Subn. Vol. 10 Pg 35



ROUTES 6 & 2

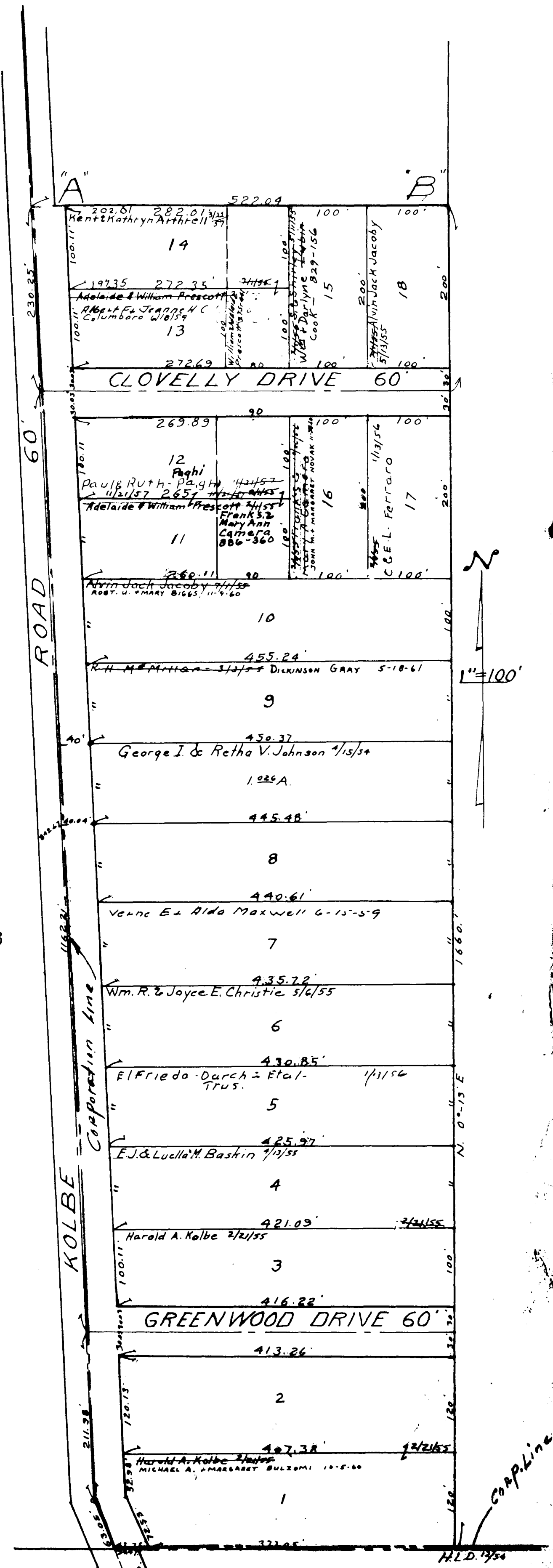
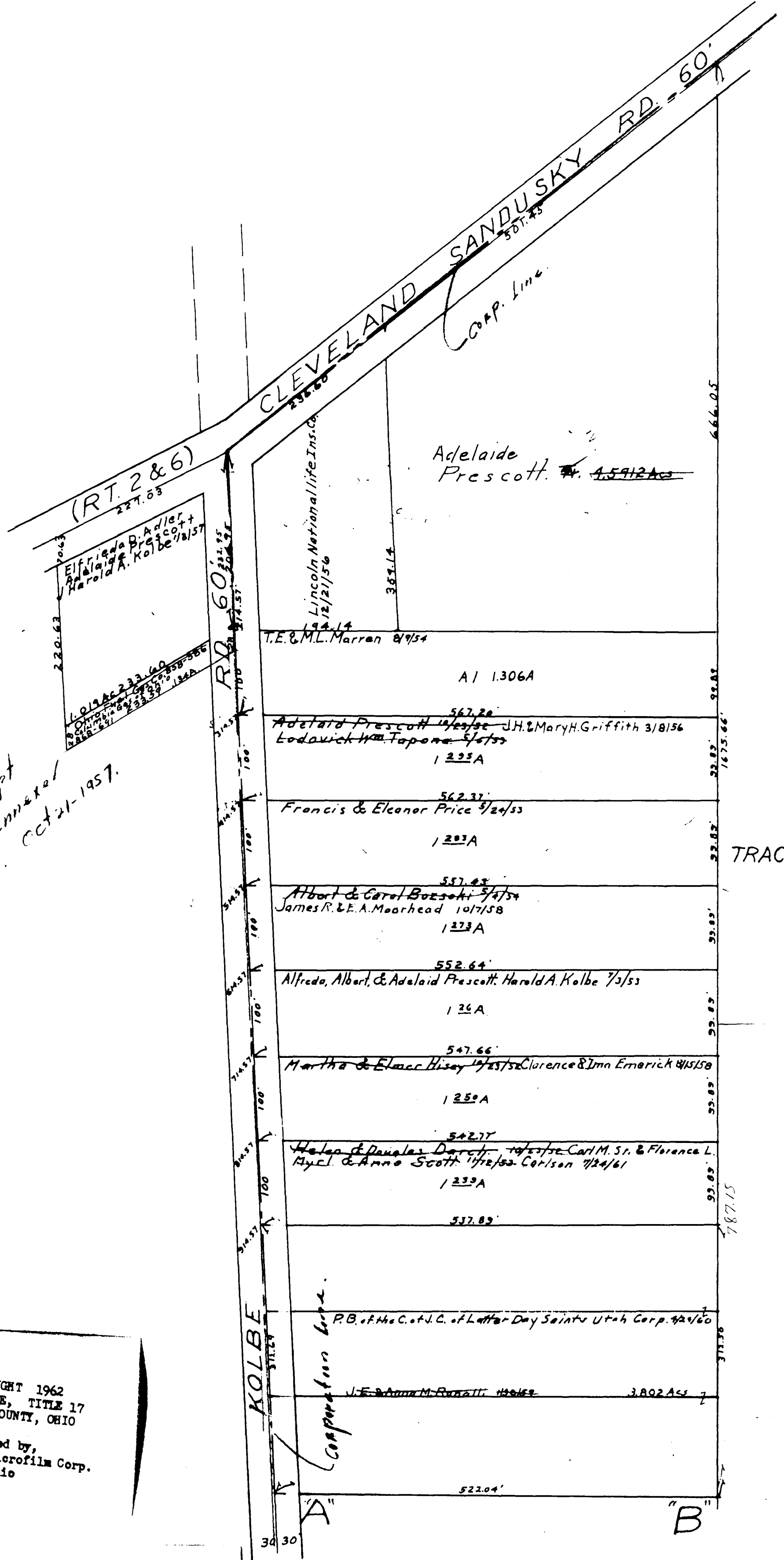
COPYRIGHT 1962
 U.S. CODE, TITLE 17
 LORAIN COUNTY, OHIO
 Reproduced by,
 Allied Microfilm Corp.
 Akron, Ohio

**BLACK RIVER
 TOWNSHIP**

Note:
 This property except
 the N.W. parcel has been annexed
 to the city of Lorain. Oct 21-1957.

COPYRIGHT 1962
 U.S. CODE, TITLE 17
 LORAIN COUNTY, OHIO
 Reproduced by,
 Allied Microfilm Corp.
 Akron, Ohio

BLACK RIVER
 TOWNSHIP



KOLBE ACRES.
 TRACT-3 Q.L.-1.
 BLACK-RIVER-TWP.
 Lots in Blank: Harold Kolbe et al.
 VOL 17, Pg. 22-A