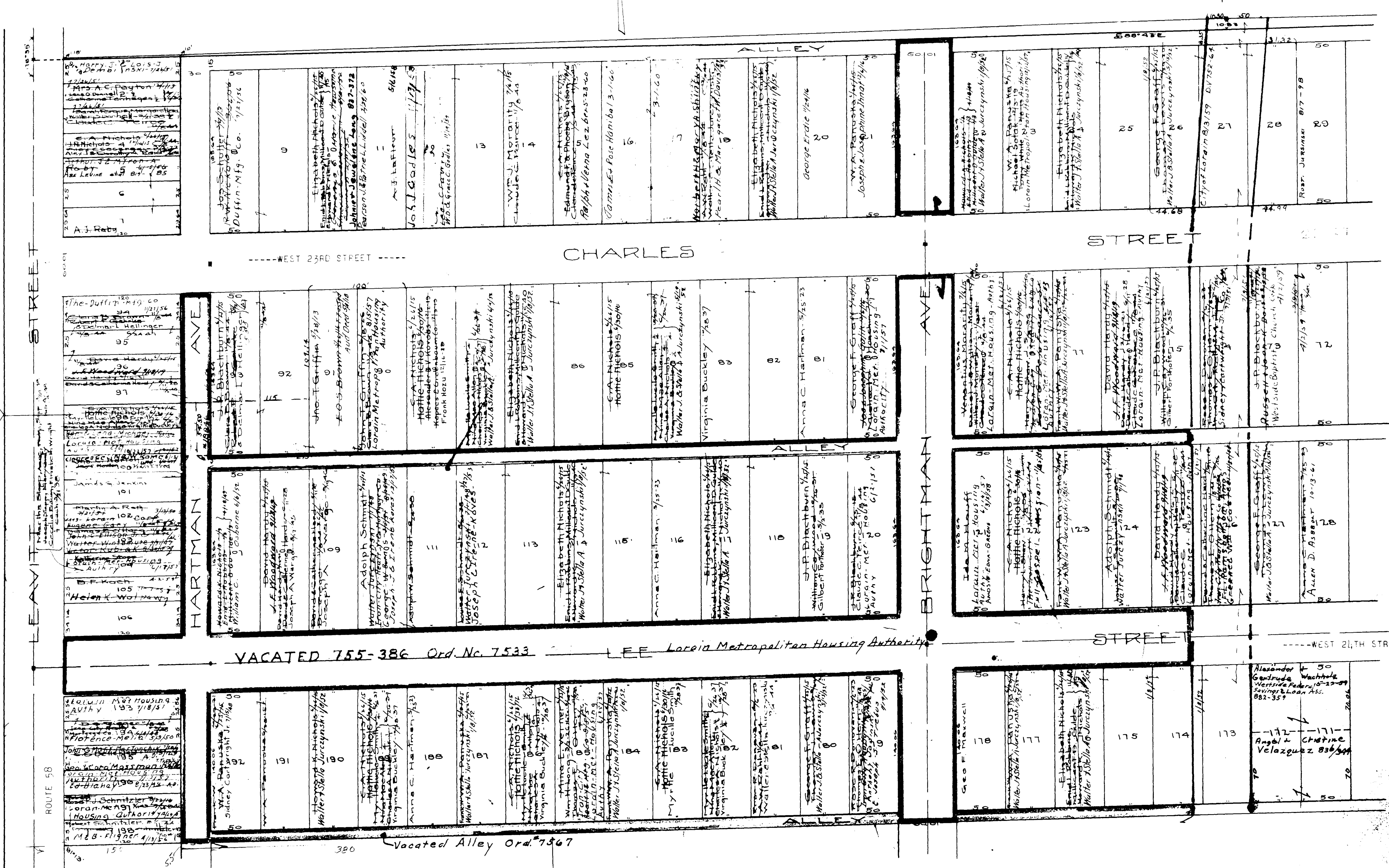


THE PARK PLAN ALLOTMENT FIRST ADDITION
Lot 17 Tract 2

Black River Twp.

Recorded Vol. 7 P. 7

Scale 1"=60'



Note - All Lots in blank owned by B.G. Nichols

COPYRIGHT 1962
U.S. CODE, TITLE 17
LORAIN COUNTY, OHIO

Reproduced by
Allied Microfilm Corp.
Akron, Ohio

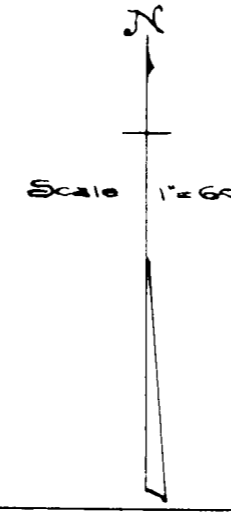
**BLACK RIVER
TOWNSHIP**

THE PARK PLAN ALLOTMENT FIRST ADDITION

Lot 17 Tract 2

Black River Twp.

Records Vol. 7 Pg. 7



Lot #	Owner Name	Acres	Area	Notes
10	Joseph Talone-Kovacs	1/11/27		
11	Robert Hardy Mink			
12	Robert C. Ann	5/21/58		
13	Adolph Schmidt			
14	Adolph Schmidt			
15	Adolph Schmidt			
16	Adolph Schmidt			
17	Adolph Schmidt			
18	Adolph Schmidt			
19	Adolph Schmidt			
20	Adolph Schmidt			
21	Adolph Schmidt			
22	Adolph Schmidt			
23	Adolph Schmidt			
24	Adolph Schmidt			
25	Adolph Schmidt			
26	Adolph Schmidt			
27	Adolph Schmidt			
28	Adolph Schmidt			
29	Adolph Schmidt			
30	Adolph Schmidt			
31	Adolph Schmidt			
32	Adolph Schmidt			
33	Adolph Schmidt			
34	Adolph Schmidt			
35	Adolph Schmidt			
36	Adolph Schmidt			
37	Adolph Schmidt			
38	Adolph Schmidt			
39	Adolph Schmidt			
40	Adolph Schmidt			
41	Adolph Schmidt			
42	Adolph Schmidt			
43	Adolph Schmidt			
44	Adolph Schmidt			
45	Adolph Schmidt			
46	Adolph Schmidt			
47	Adolph Schmidt			
48	Adolph Schmidt			
49	Adolph Schmidt			
50	Adolph Schmidt			

CHARLES STREET

MARSHALL AVE.

WEST 23RD STREET

WEST 24TH STREET

STREET

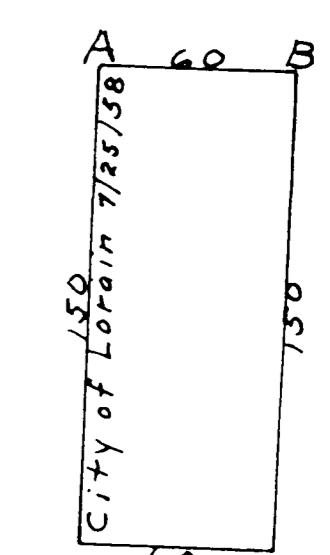
STREET

Note - All Lots in block owned by B.G. Nichols

COPYRIGHT 1962 U.S. CODE, TITLE 17 LORAIN COUNTY, OHIO

Reproduced by Allied Microfilm Corp. Akron, Ohio

BLACK RIVER TOWNSHIP



Lake Terrace Inc. B37-43
Manning, Adams, Downing, Bartlett, 158
Loring, Forman, Johnson, 158
Loring, Forman, Johnson, 158
Loring, Forman, Johnson, 158

104	100
10001	100
102	100
101	100

179	100
178	218
177	217
176	216
175	215

257	258
256	255
254	253
252	251
250	249

344	343
342	341
340	339
338	337
336	335

GRACE ST.

100	134
95	128
94	125
93	127
92	126
91	125
90	124
89	123
88	122
87	121
86	120
85	119
84	118
83	117
82	116
81	115
80	114
79	113
78	112
77	111
76	110
75	109
74	108
73	107
72	106
71	105
70	104
69	103
68	102
67	101
66	100
65	99
64	98
63	97
62	96
61	95
60	94
59	93
58	92
57	91
56	90
55	89
54	88
53	87
52	86
51	85
50	84
49	83
48	82
47	81
46	80
45	79
44	78
43	77
42	76
41	75
40	74
39	73
38	72
37	71
36	70
35	69
34	68
33	67
32	66
31	65
30	64
29	63
28	62
27	61
26	60
25	59
24	58
23	57
22	56
21	55
20	54
19	53
18	52
17	51
16	50
15	49
14	48
13	47
12	46
11	45
10	44
9	43
8	42
7	41
6	40
5	39
4	38
3	37
2	36
1	35

NICHOLS ST.

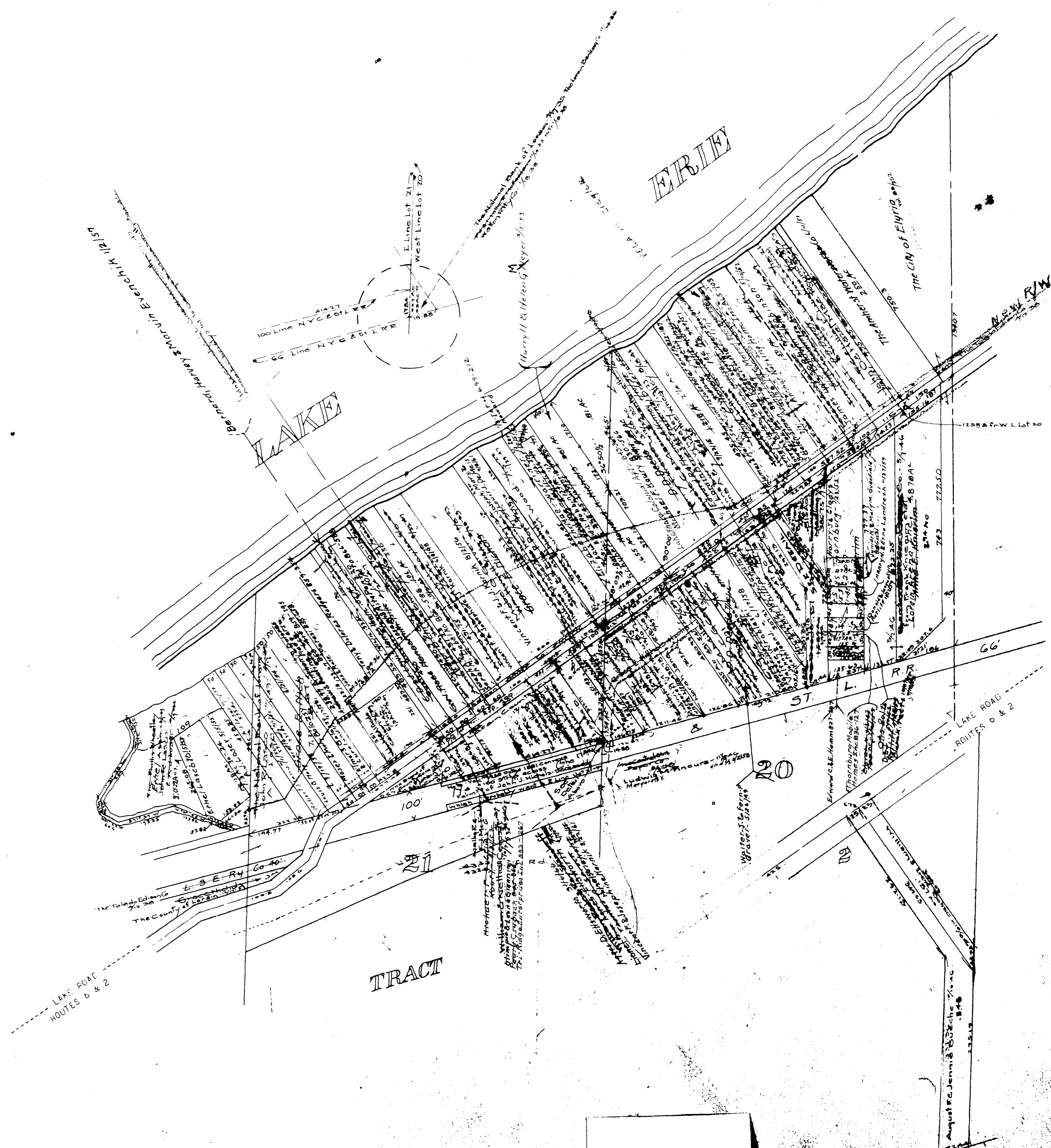
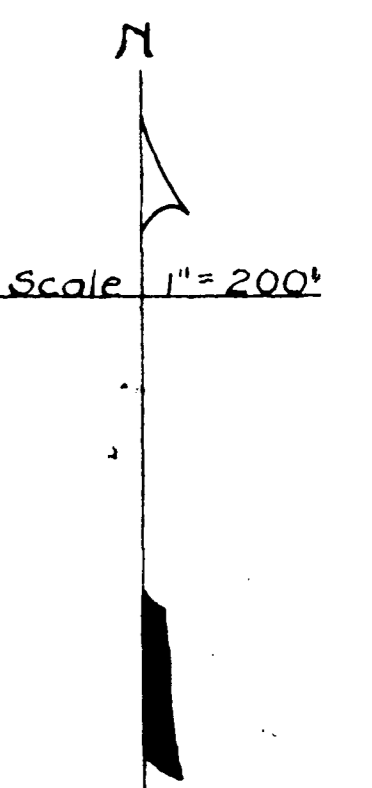
179	209
178	208
177	207
176	206
175	205
174	204
173	203
172	202
171	201
170	200
169	199
168	198
167	197
166	196
165	195
164	194
163	193
162	192
161	191
160	190
159	189
158	188
157	187
156	186
155	185
154	184
153	183
152	182
151	181
150	180
149	179
148	178
147	177
146	176
145	175
144	174
143	173
142	172
141	171
140	170
139	169
138	168
137	167
136	166
135	165
134	164
133	163
132	162
131	161
130	160
129	159
128	158
127	157
126	156
125	155
124	154
123	153
122	152
121	151
120	150
119	149
118	148
117	147
116	146
115	145
114	144
113	143
112	142
111	141
110	140
109	139
108	138
107	137
106	136
105	135
104	134
103	133
102	132
101	131
100	130
99	129
98	128
97	127
96	126
95	125
94	124
93	123
92	122
91	121
90	120
89	119
88	118
87	117
86	116
85	115
84	114
83	113
82	112
81	111
80	110
79	109
78	108
77	107
76	106
75	105
74	104
73	103
72	102
71	101
70	100
69	99
68	98
67	97
66	96
65	95
64	94
63	93
62	92
61	91
60	90
59	89
58	88
57	87
56	86
55	85
54	84
53	83
52	82
51	81
50	80
49	79
48	78
47	77
46	76
45	75
44	74
43	73
42	72
41	71
40	70
39	69
38	68
37	67
36	66
35	65
34	64
33	63
32	62
31	61
30	60
29	59
28	58
27	57
26	56
25	55
24	54
23	53
22	52
21	51
20	50
19	49
18	48
17	47
16	46
15	45
14	44
13	43
12	42
11	41
10	40
9	39
8	38
7	37
6	36
5	35
4	34
3	33
2	32
1	31

MADISON AVE.

255	297
254	296
253	295
252	294
251	293
250	292
249	291
248	290
247	289
246	288
245	287
244	286
243	285
242	284
241	283
240	282
239	281
238	280
237	279
236	278
235	277
234	276
233	275
232	274
231	273
230	272
229	271
228	270
227	269
226	268
225	267
224	266
223	265
222	264
221	263
220	262
219	261
218	260
217	259
216	258
215	257
214	256
213	255
212	254
211	253
210	252
209	251
208	250
207	249
206	248
205	247
204	246
203	245
202	244
201	243
200	242
199	241
198	240
197	239
196	238
195	237
194	236
193	235
192	234
191	233
190	232
189	231
188	230
187	229
186	228
185	227
184	226
183	225
182	224
181	223
180	222
179	221
178	220
177	219
176	218
175	217
174	216
173	215
172	214
171	213
170	212
169	211
168	210
167	209
166	208
165	207
164	206
163	205
162	204
161	203
160	202
159	201
158	200
157	199
156	198
155	197
154	196
153	195
152	194
151	193
150	192
149	191
148	190
147	189
146	188
145	187
144	186
143	185
142	184
141	183
140	182
139	181
138	180
137	179
136	178
135	177
134	176
133	175
132	174
131	173
130	172
129	171
128	170
127	169
126	168
125	167
124	166
123	165
122	164
121	163
120	162
119	161
118	160
117	159
116	158
115	157
114	156
113	155
112	154
111	153
110	152
109	151
108	150
107	149
106	148
105	147
104	146
103	145
102	144
101	143
100	142
99	141
98	140
97	139
96	138
95	137
94	136
93	135
92	134
91	133
90	132
89	131
88	130
87	129
86	128
85	127
84	126
83	125
82	124
81	123
80	122
79	121
78	120
77	119
76	118
75	117
74	116
73	115
72	114
71	113
70	112
69	111
68	110
67	109
66	108
65	107
64	106
63	105
62	104
61	103
60	102
59	101
58	100
57	99
56	98
55	97
54	96
53	95
52	94
51	93
50	92
49	91
48	90
47	89
46	88
45	87
44	86
43	85
42	84
41	83
40	82
39	81
38	80
37	79
36	78
35	77
34	76
33	75
32	74
31	73
30	72
29	71
28	70
27	69
26	68
25	67
24	66
23	65
22	64
21	63
20	62
19	61
18	60
17	59
16	58
15	57
14	56
13	55
12	54
11	53
10	52
9	51
8	50
7	49
6	48
5	47
4	46
3	45
2	44
1	43

LAKEVIEW AVE.

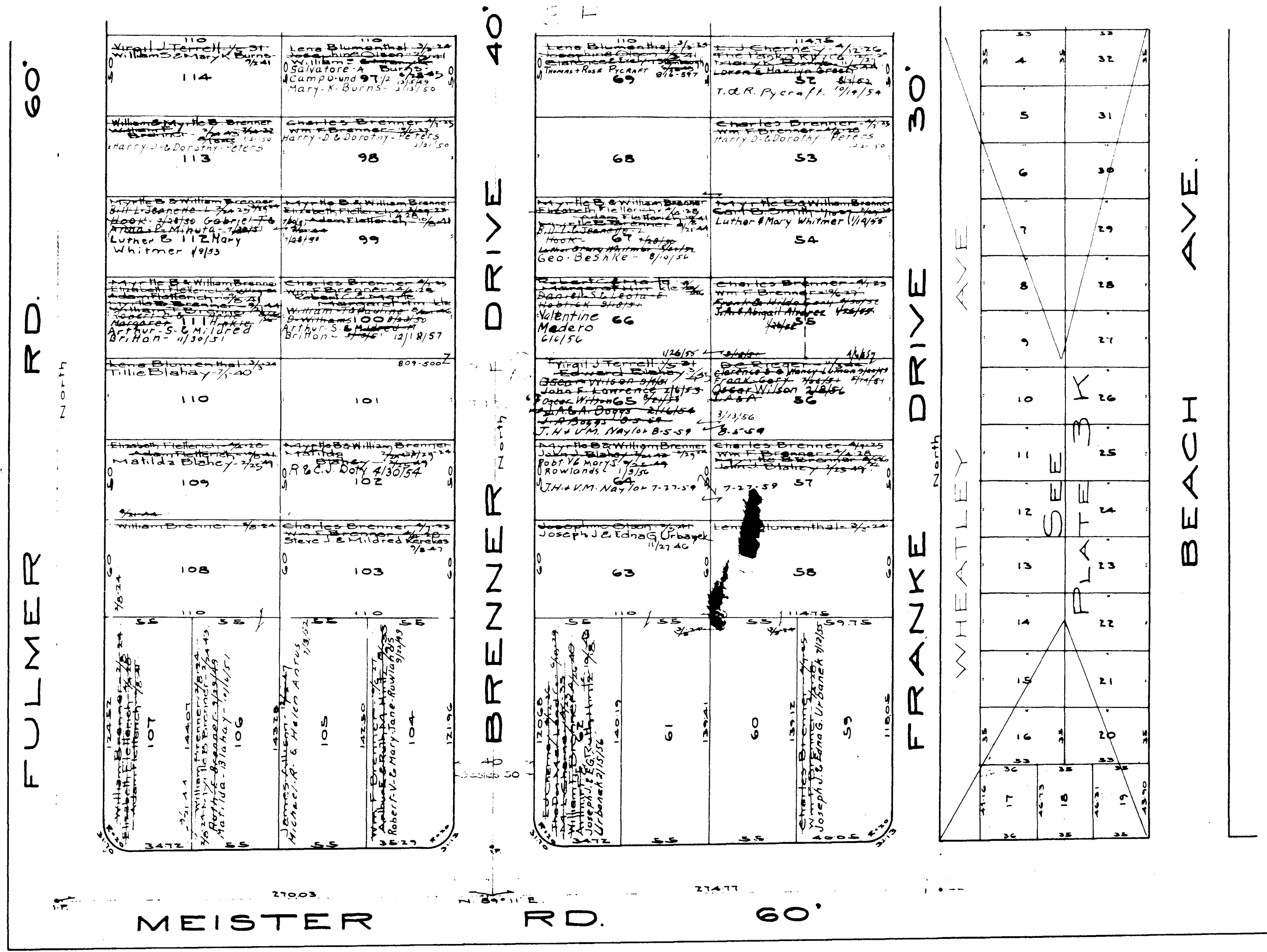
344	385
343	384
342	383
341	382
340	381
339	380
338	379
337	378
336	377
335	376
334	375
333	374
332	373
331	372
330	371
329	370
328	369
327	368
326	367
325	366
324	365
323	364
322	363
321	362
320	361
319	360
318	359
317	358
316	357
315	356
314	355
313	354
312	353
311	352
310	351
309	350
308	349
307	348
306	



COPYRIGHT 1962
U.S. CODE, TITLE 17
LORAIN COUNTY, OHIO

Reproduced by,
Allied Microfilm Corp.
Akron, Ohio

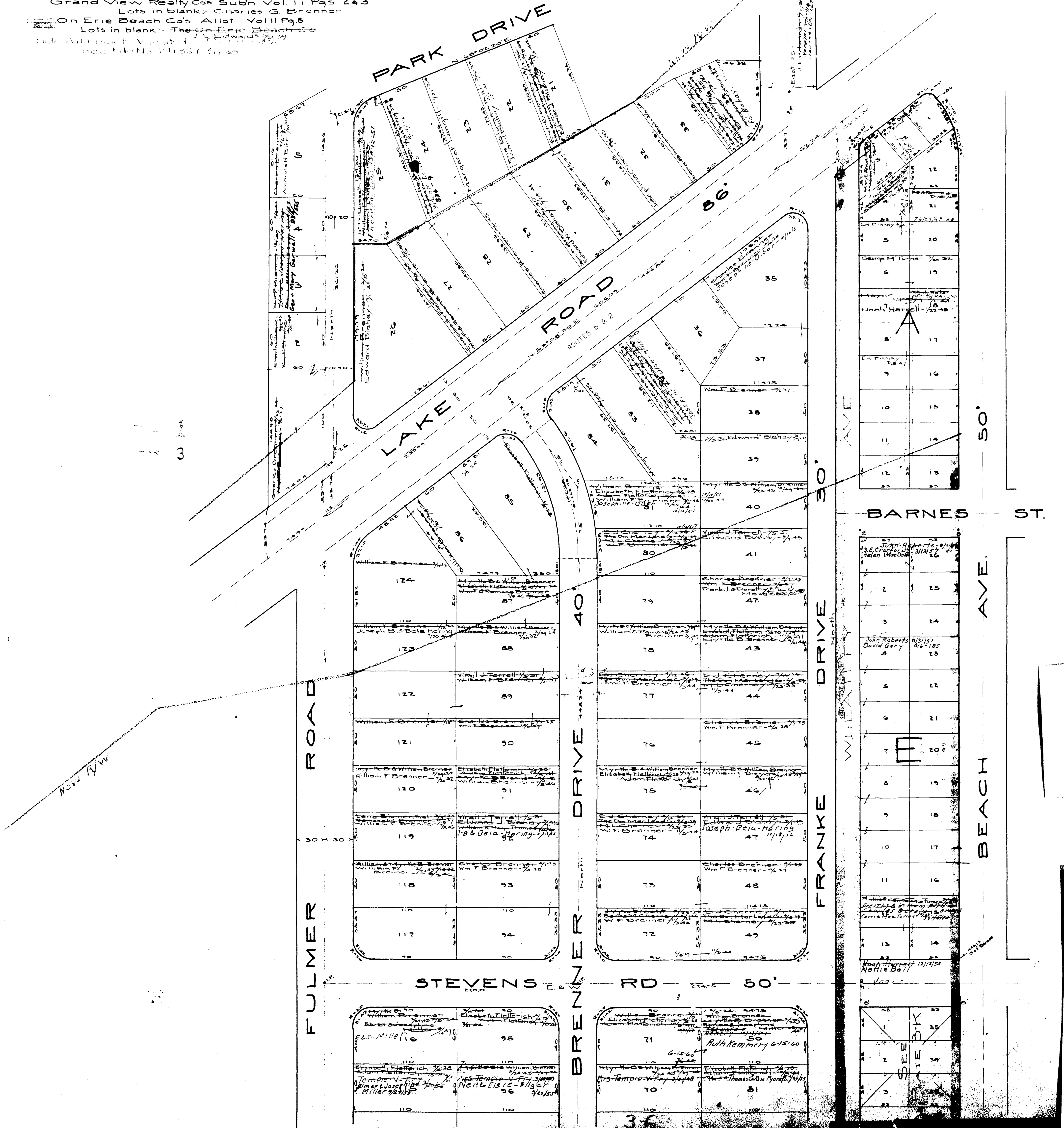
**BLACK RIVER
TOWNSHIP**



COPYRIGHT 1962
 U.S. CODE, TITLE 17
 LORAIN COUNTY, OHIO
 Reproduced by,
 Allied Microfilm Corp.
 Akron, Ohio

BLACK RIVER
 TOWNSHIP

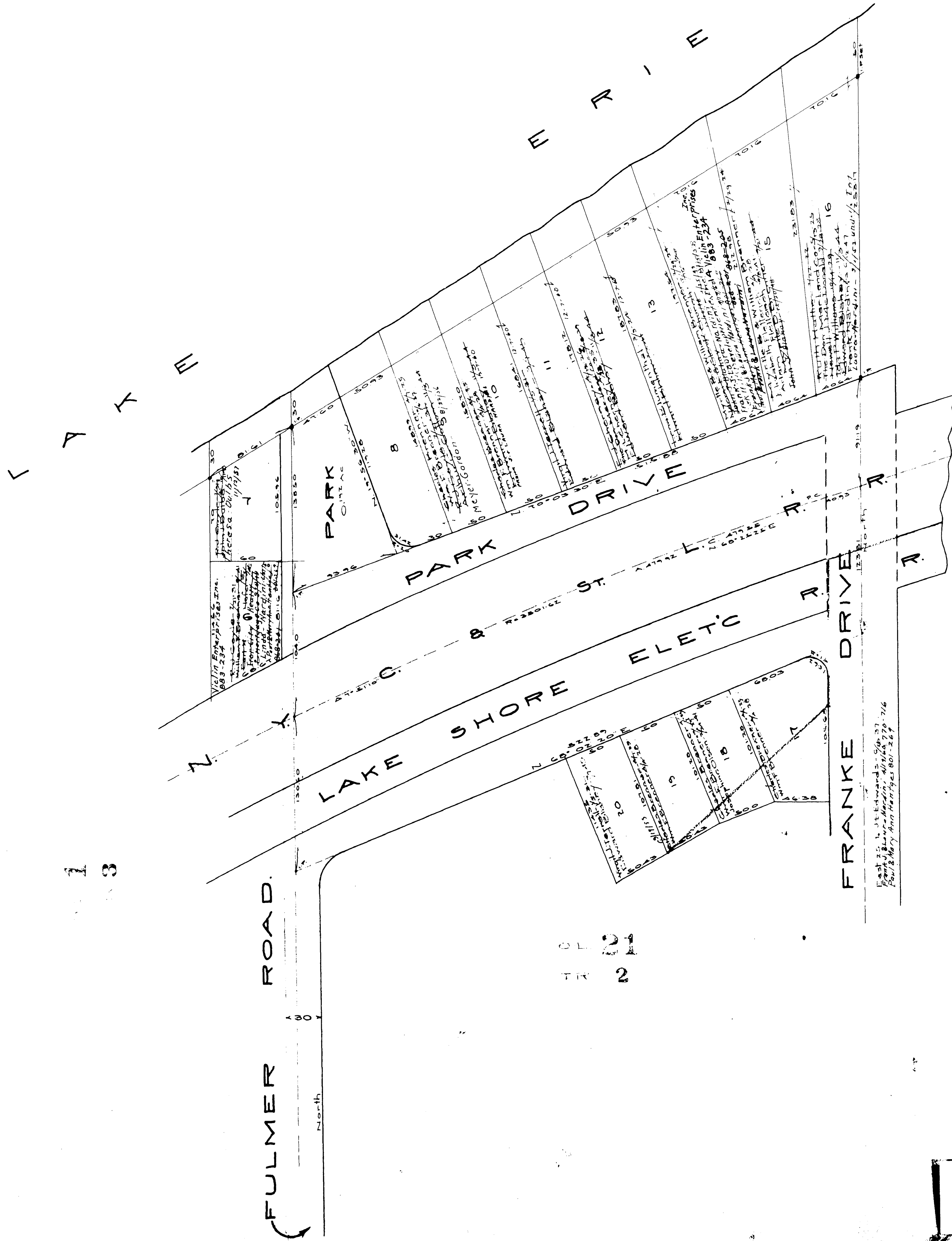
Grand View Realty Co's Subn. Vol. 11 Pgs 2 & 3
 Lots in blank - Charles G. Brenner
 On Erie Beach Co's Allot. Vol. 11 Pgs 8
 Lots in blank - The On Erie Beach Co
 Note: All blank E. Vol. 11 Pgs 2 & 3
 See files 711361 3/4 40



COPYRIGHT 1962
 U.S. CODE, TITLE 17
 LORAIN COUNTY, OHIO
 Reproduced by
 Allied Microfilm Corp.
 Akron, Ohio

BLACK RIVER
 TOWNSHIP

Grand View Realty Cos Subn Vol II Pg 283
Lots in blank: Charles G Brenner



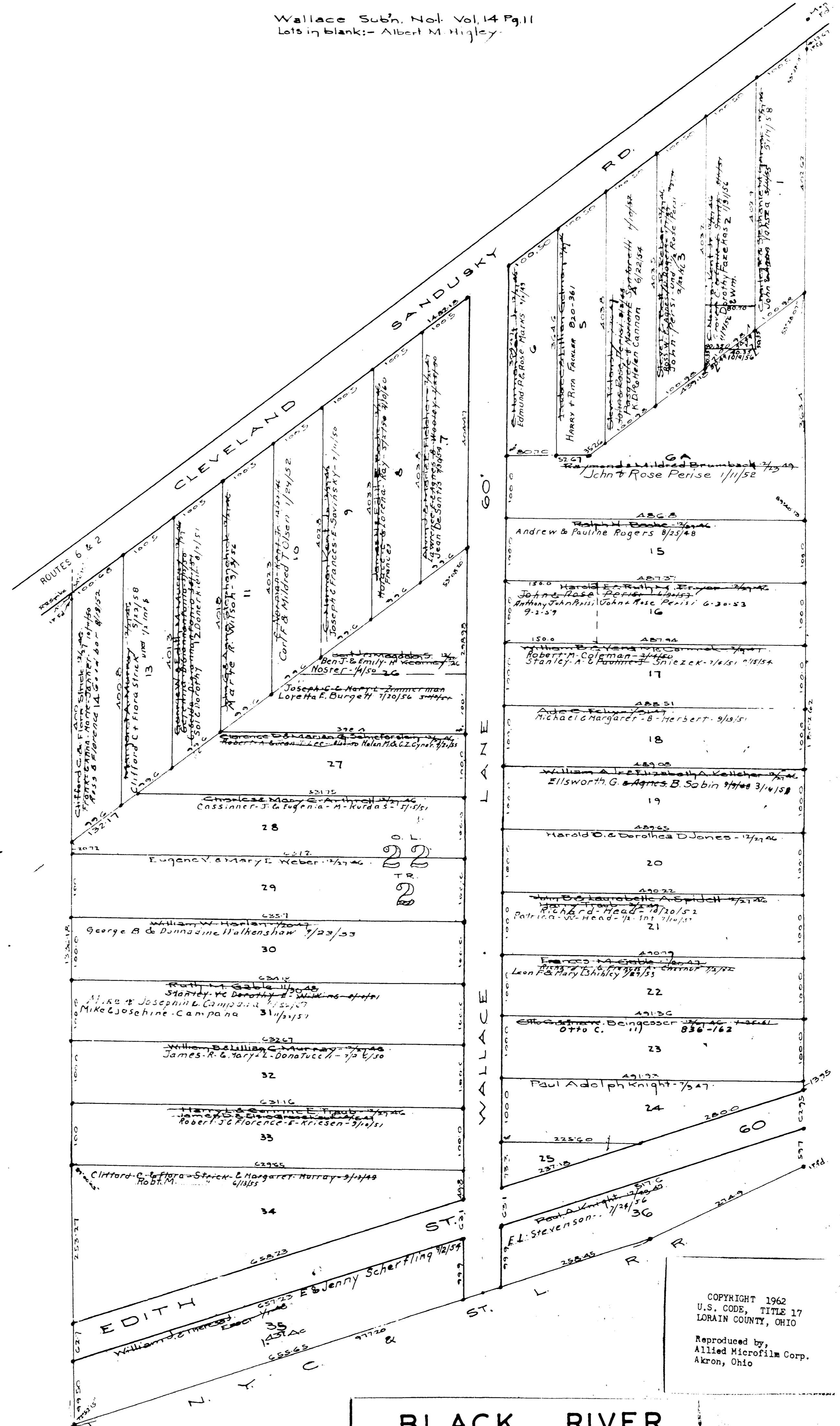
1
3

TR
2

COPYRIGHT 1962
U.S. CODE, TITLE 17
LORAIN COUNTY, OHIO

Reproduced by,
Allied Microfilm Corp.
Akron, Ohio

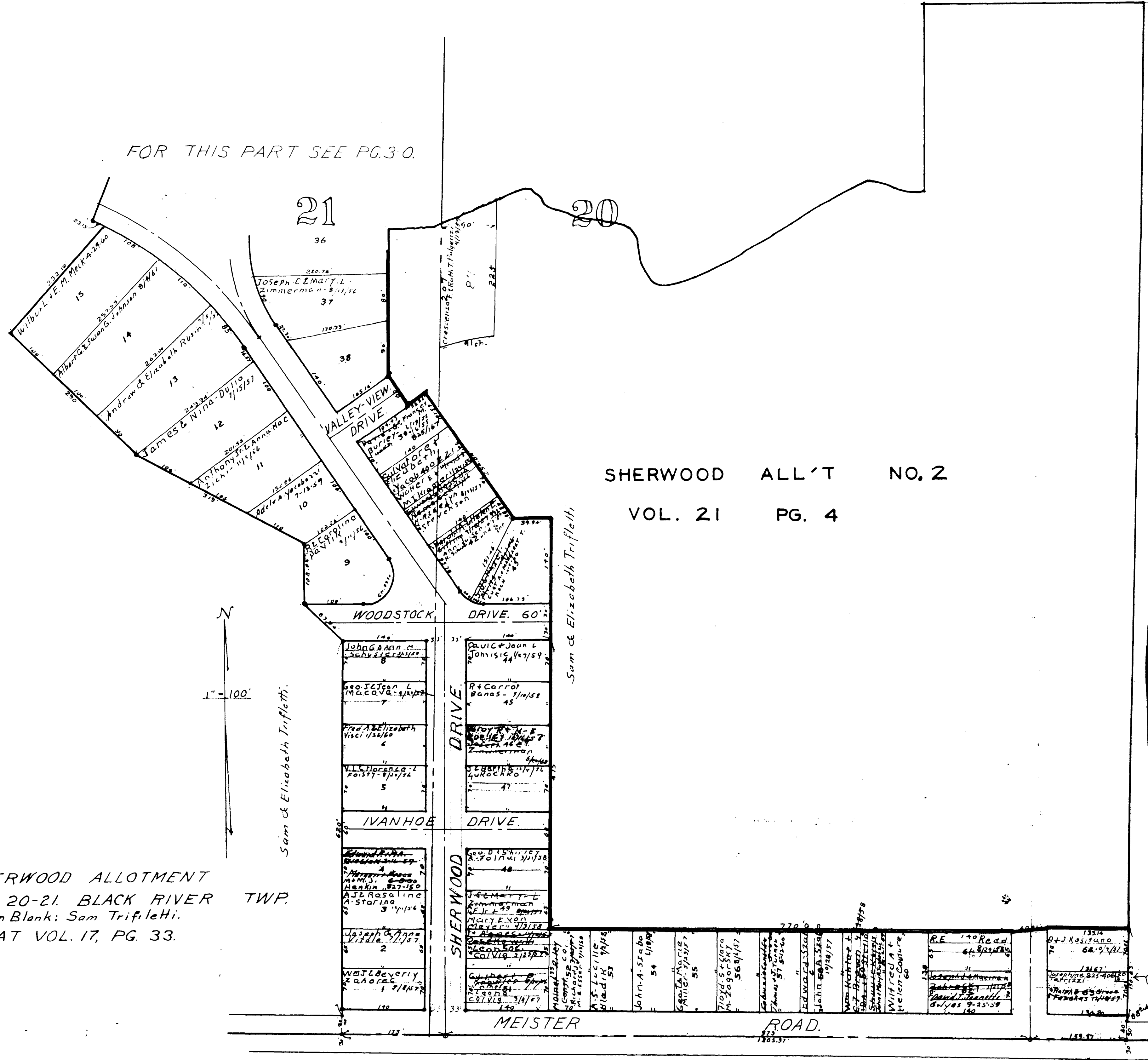
**BLACK RIVER
TOWNSHIP**



COPYRIGHT 1962
U.S. CODE, TITLE 17
LORAIN COUNTY, OHIO
Reproduced by,
Allied Microfilm Corp.
Akron, Ohio

BLACK RIVER
TOWNSHIP

FOR THIS PART SEE PG. 30.

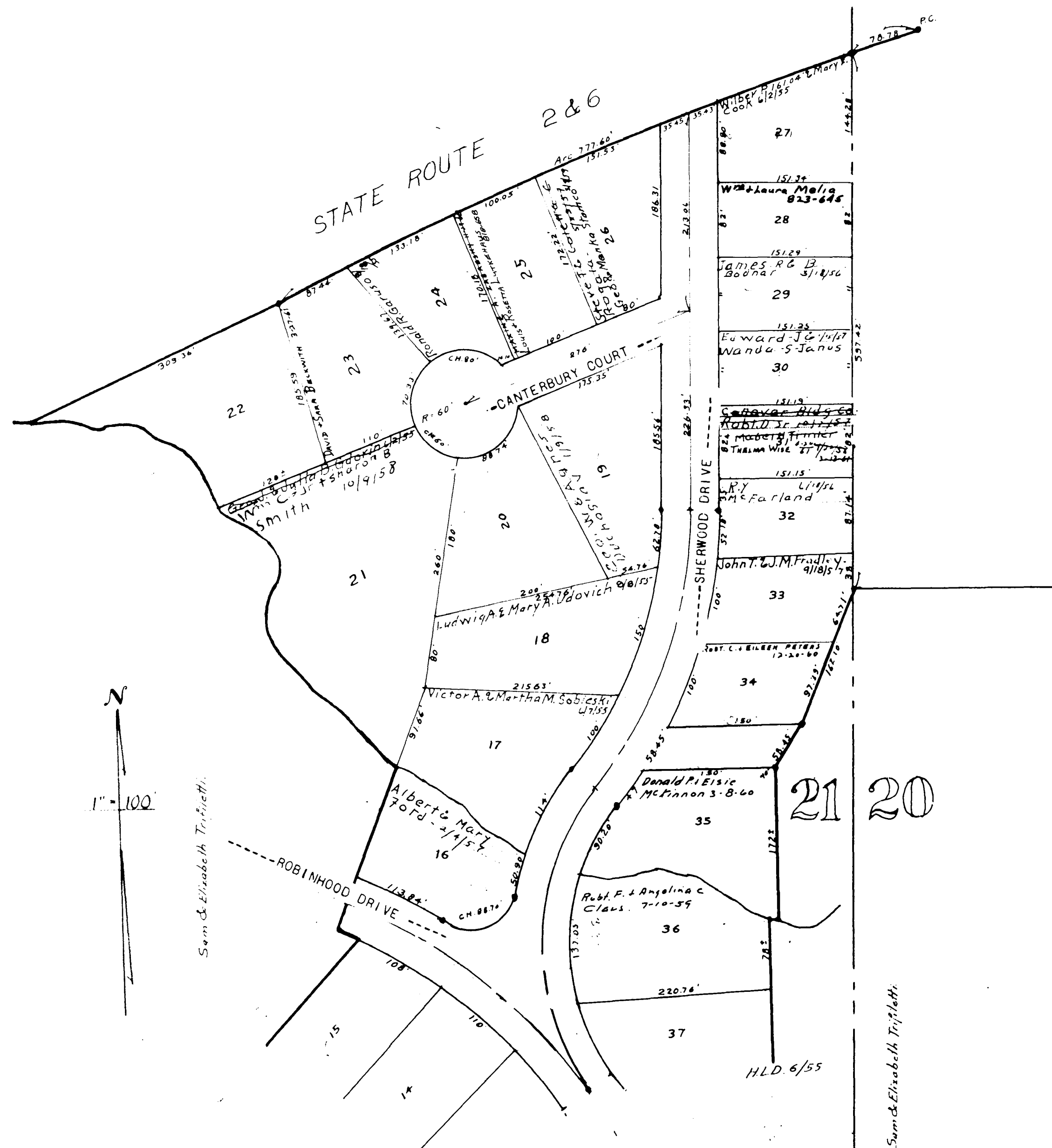


SHERWOOD ALL'T NO. 2
VOL. 21 PG. 4

SHERWOOD ALLOTMENT
TRACT 2, OL. 20-21, BLACK RIVER TWP.
Lots in Blank: Sam Trifletti.
PLAT VOL. 17, PG. 33.

BLACK RIVER
TOWNSHIP

COPYRIGHT 1962
U.S. CODE, TITLE 17
LORAIN COUNTY, OHIO
Reproduced by:
Allied Microfilm Corp.
Akron, Ohio



FOR THIS PART SEE PG. 3-N.

SHERWOOD ALLOTMENT
 OL. 20 & 21 BLACK RIVER TOWNSHIP
 TRACT 2.
 Lots in Blank: Sam Trifiletti.
 PLAT VOL. 17, PG. 33.

COPYRIGHT 1962
 U.S. CODE, TITLE 17
 LORAIN COUNTY, OHIO
 Reproduced by
 Allied Microfilm Corp.
 Akron, Ohio

BLACK RIVER
 TOWNSHIP