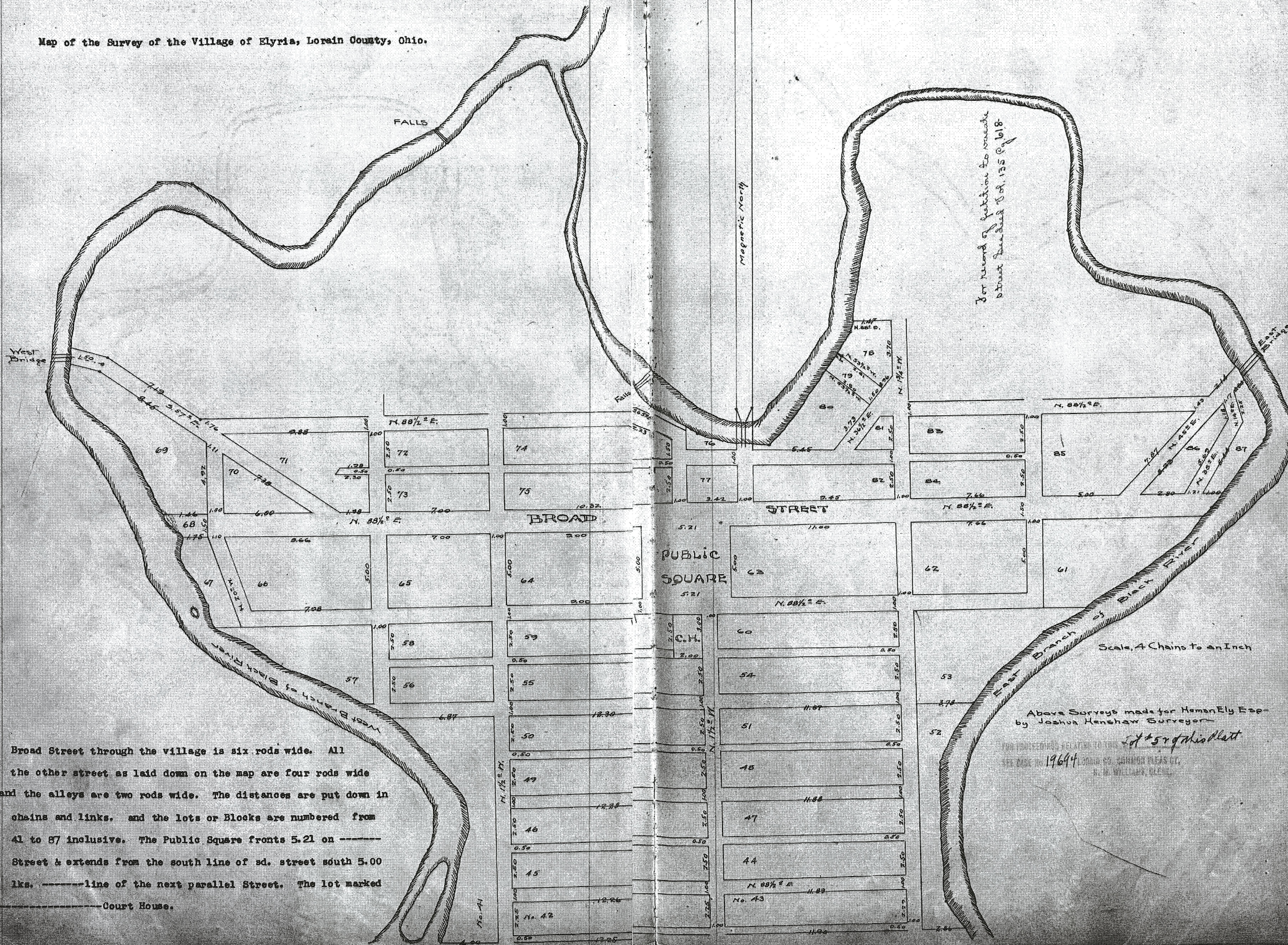


Map of the Survey of the Village of Elyria, Lorain County, Ohio.



Broad Street through the village is six rods wide. All the other street as laid down on the map are four rods wide and the alleys are two rods wide. The distances are put down in chains and links. and the lots or Blocks are numbered from 41 to 87 inclusive. The Public Square fronts 5.21 on --- Street & extends from the south line of sd. street south 5.00 lks. ---line of the next parallel Street. The lot marked --- Court House.

For record of petition to vacate Street bounded N of 135 P 1018

Above Surveys made for Heman Ely Esp- by Joshua Henshaw Surveyor
 1964
 SEE PAGE 100 1964
 H. W. WILLIAMS, CLERK