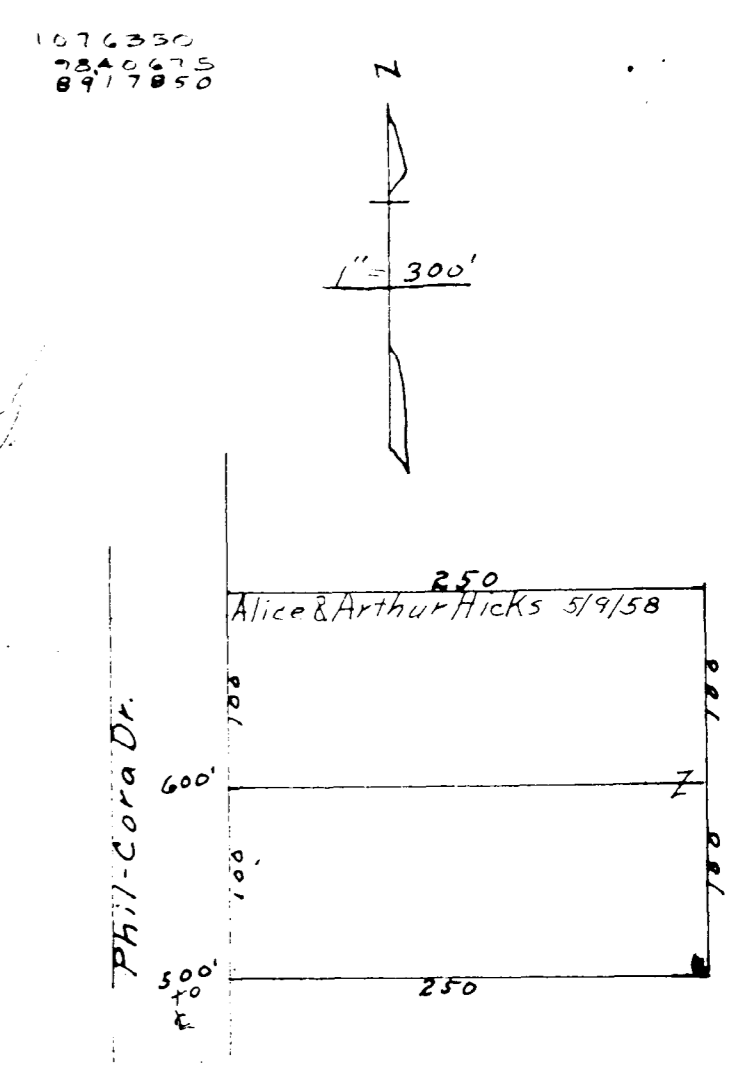
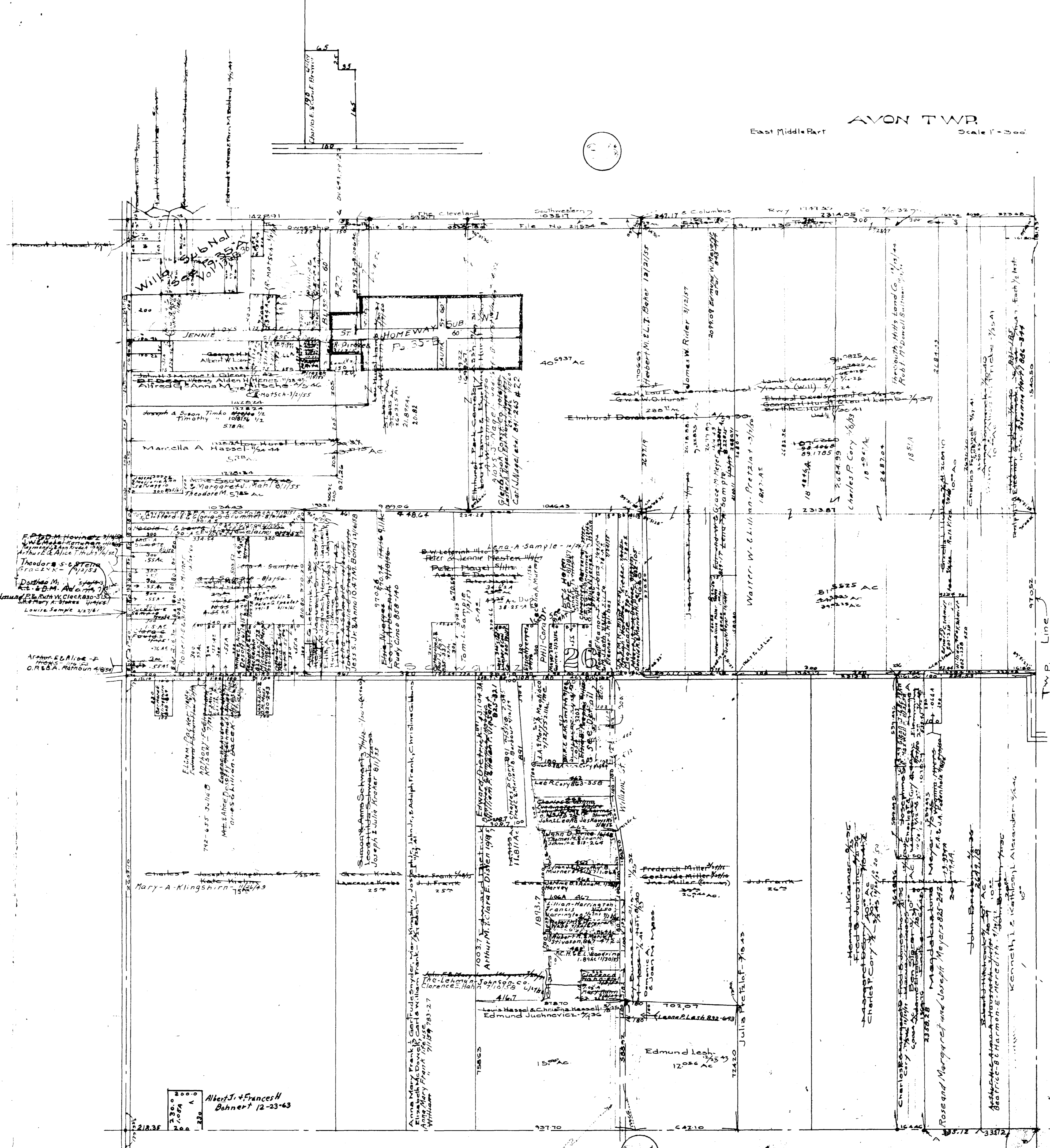


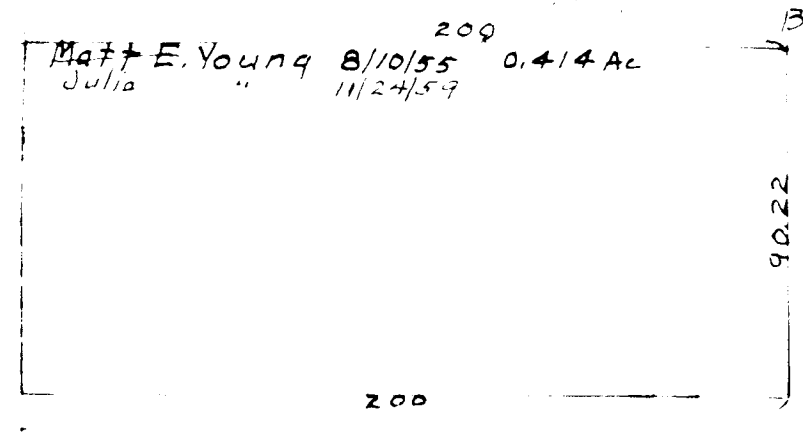
AVON TWP East Middle Part Scale 1"=300'



MAP OF AVON VILLAGE

REF: Line divides that
 Road is straight from SW corner of rd
 to east line rd and south
 REF: STATION DEED

COPYRIGHT 1962
 U.S. CODE, TITLE 17
 LORAIN COUNTY, OHIO
 Reproduced by,
 Allied Microfilm Corp.
 Akron, Ohio

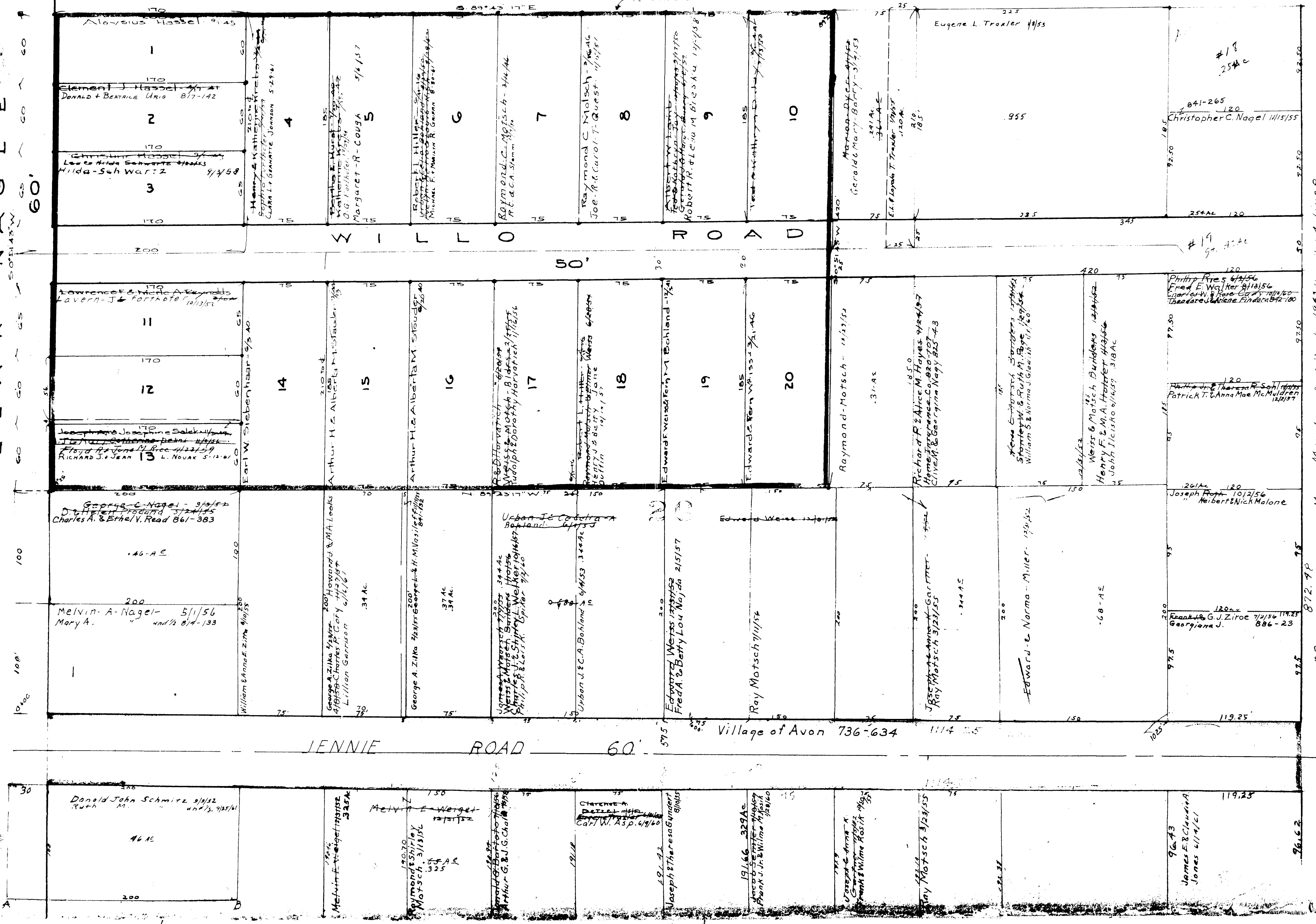


MAP OF AVON VILLAGE

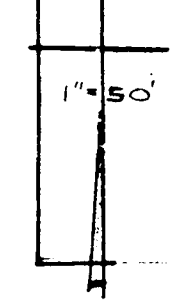
COPYRIGHT 1962
U.S. CODE, TITLE 17
LORAIN COUNTY, OHIO

Reproduced by,
Allied Microfilm Corp.
Akron, Ohio

LEARNAGLE RD
60'



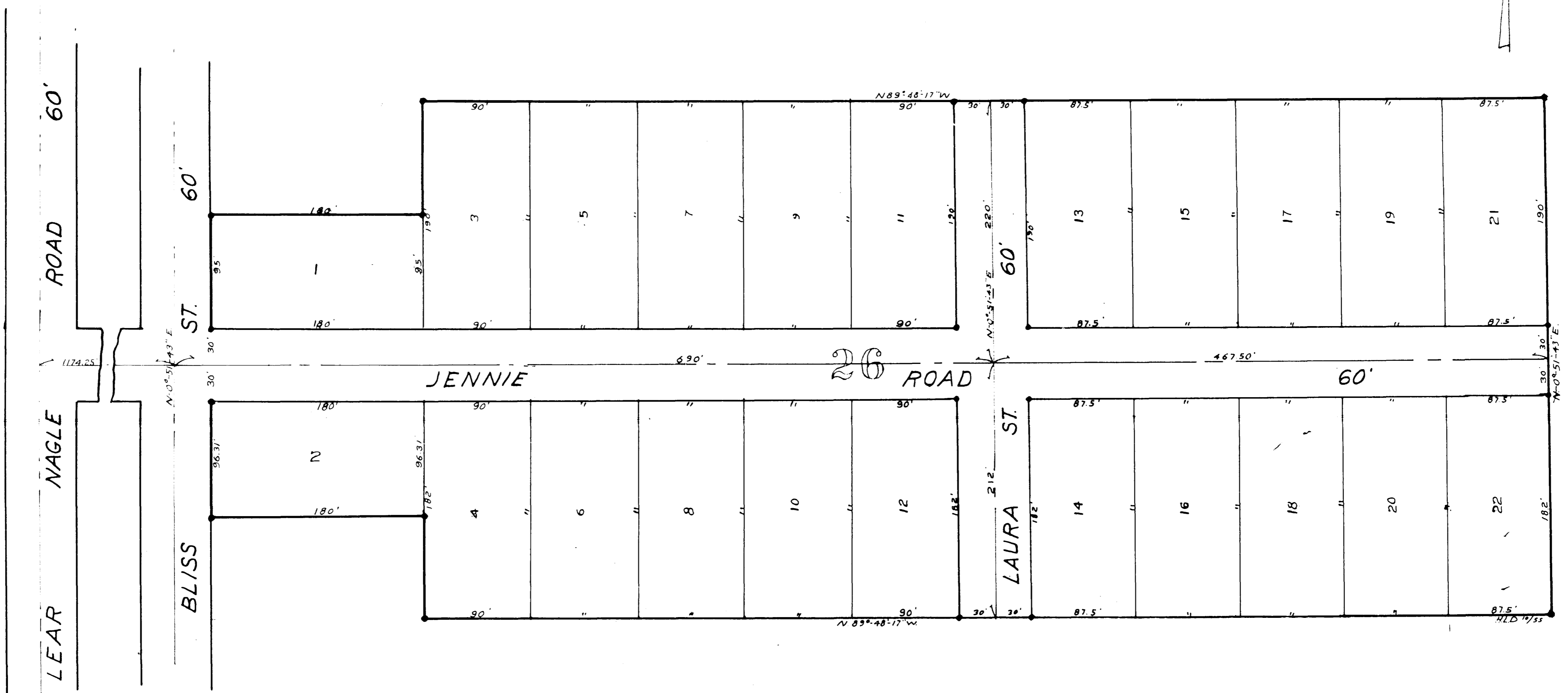
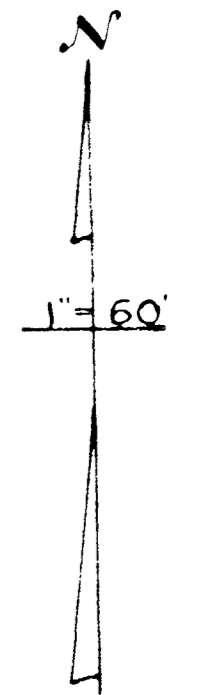
#20 9.2 Ac. BLISS ST
Mary Moran and Mary Bliss 1962



#21
872.62

#22
119.25

77
51



HOMEWAY SUBDIVISION No. 1.
 SEC. 26, AVON VILLAGE
 Lots in Blank: Glenbrook Const. Co. Albert E. Sobren Pres.
 PLAT VOL. 18, Page 25
 10.43 Ac.

AVON MAP OF VILLAGE

COPYRIGHT 1962
 U.S. CODE, TITLE 17
 LORAIN COUNTY, OHIO
 Reproduced by,
 Allied Microfilm Corp.
 Akron, Ohio