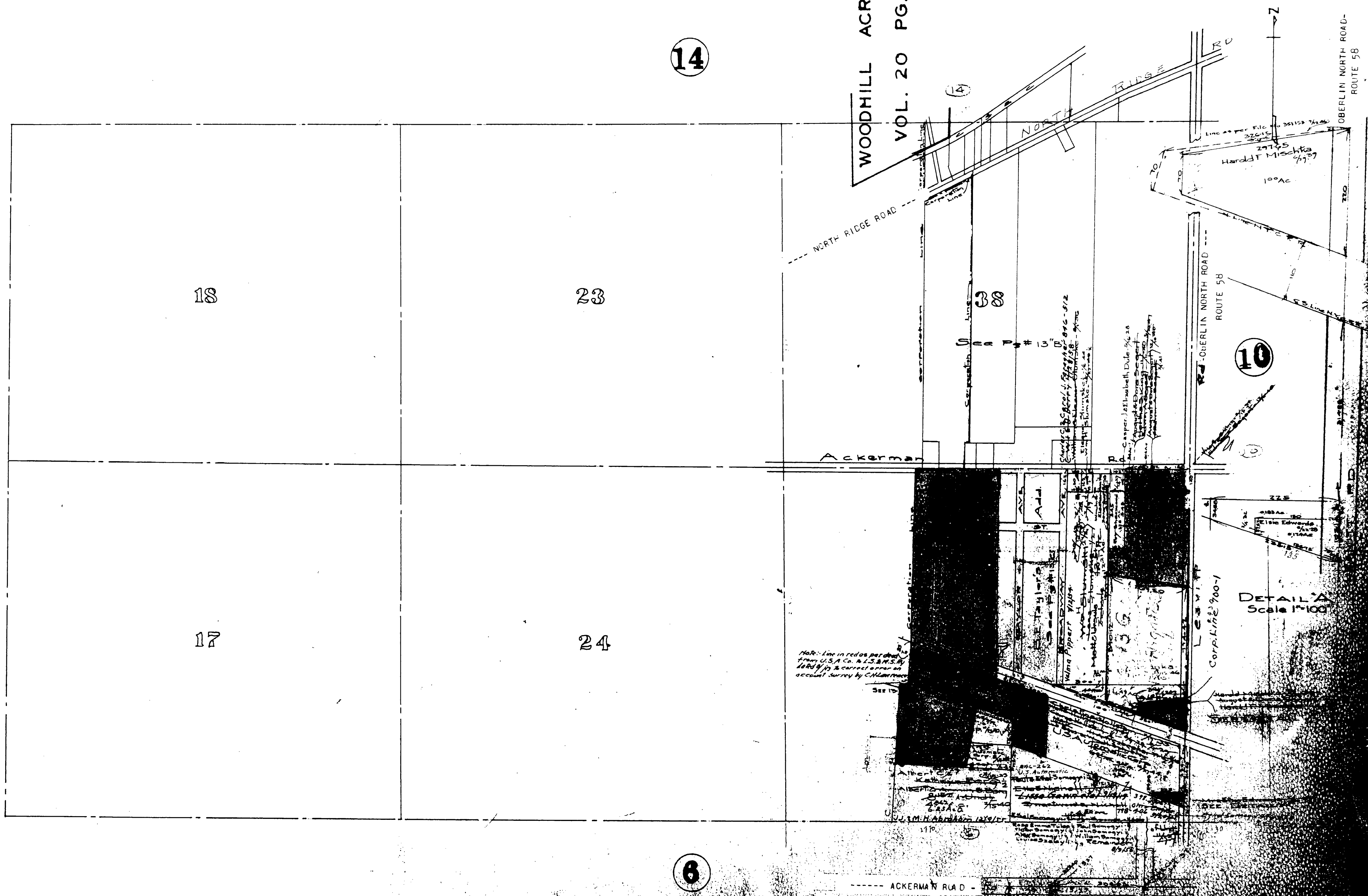


AMHERST TWP
North Cent Part Scale 1"=400'

WOODHILL ACRES NO. 1
VOL. 20 PG. 15A



12

14

10

18

23

38

17

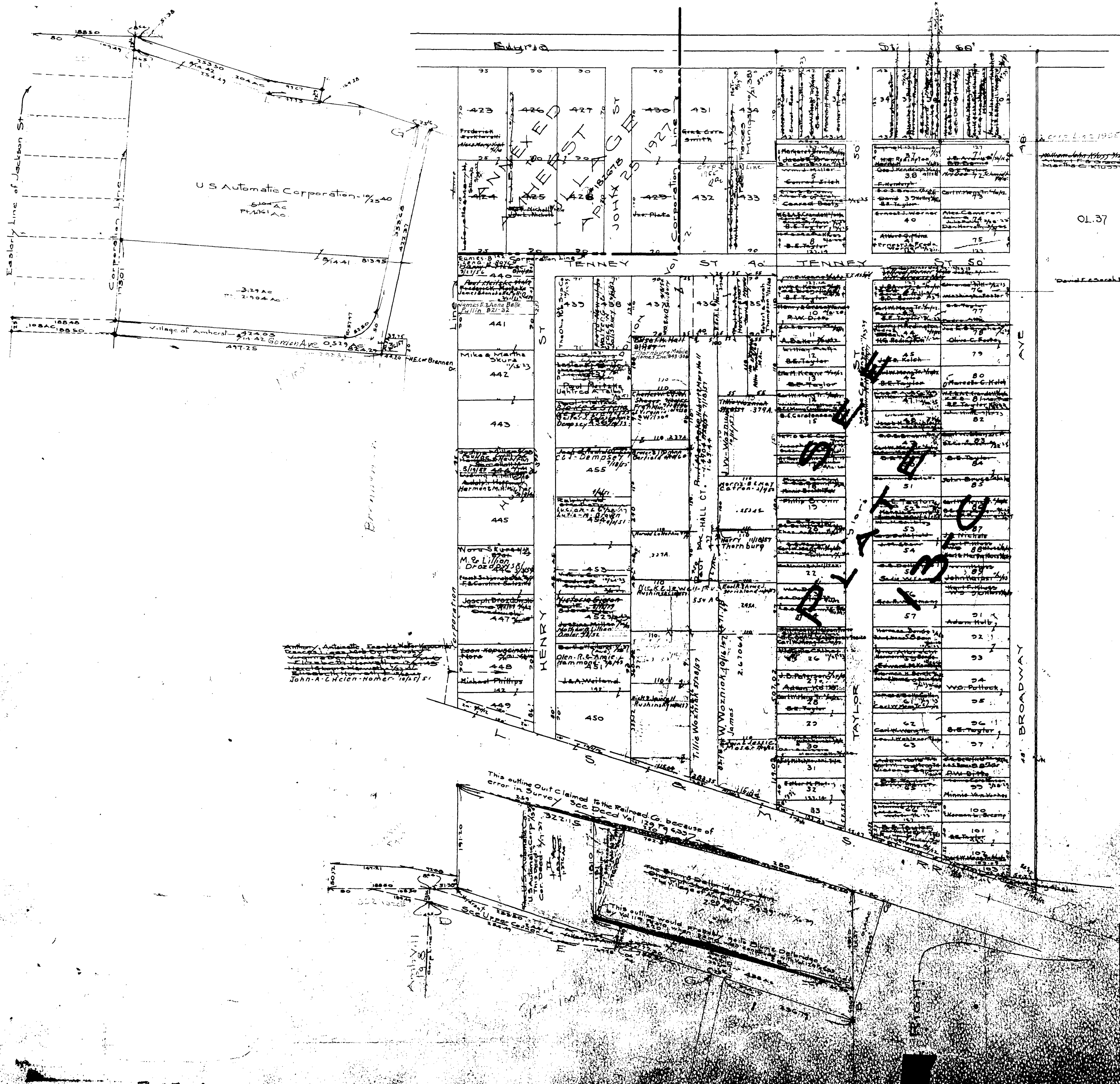
24

6

MAP OF
AMHERST TOWNSHIP

COPYRIGHT 1962
U.S. CODE, TITLE 17
LORAIN COUNTY, OHIO
Reproduced by,
Allied Microfilm Corp.
Akron, Ohio

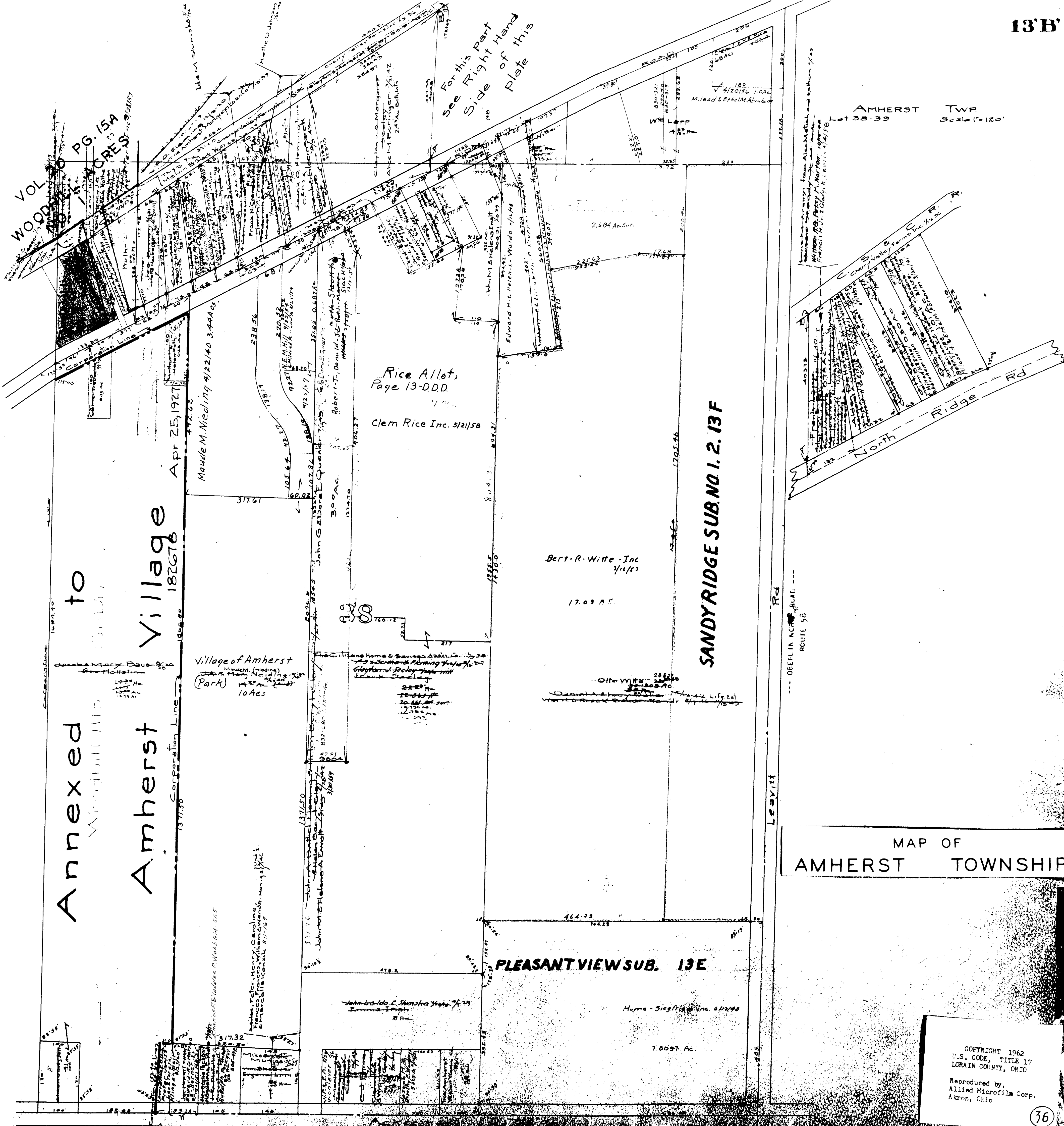
34



AMHERST TWP
Scale 1" = 100'

MAP OF
AMHERST TOWNSHIP

COPYRIGHT 1962
U.S. CODE, TITLE 17
LORAIN COUNTY, OHIO
Reproduced by,
Allied Microfilm Corp.
Akron, Ohio



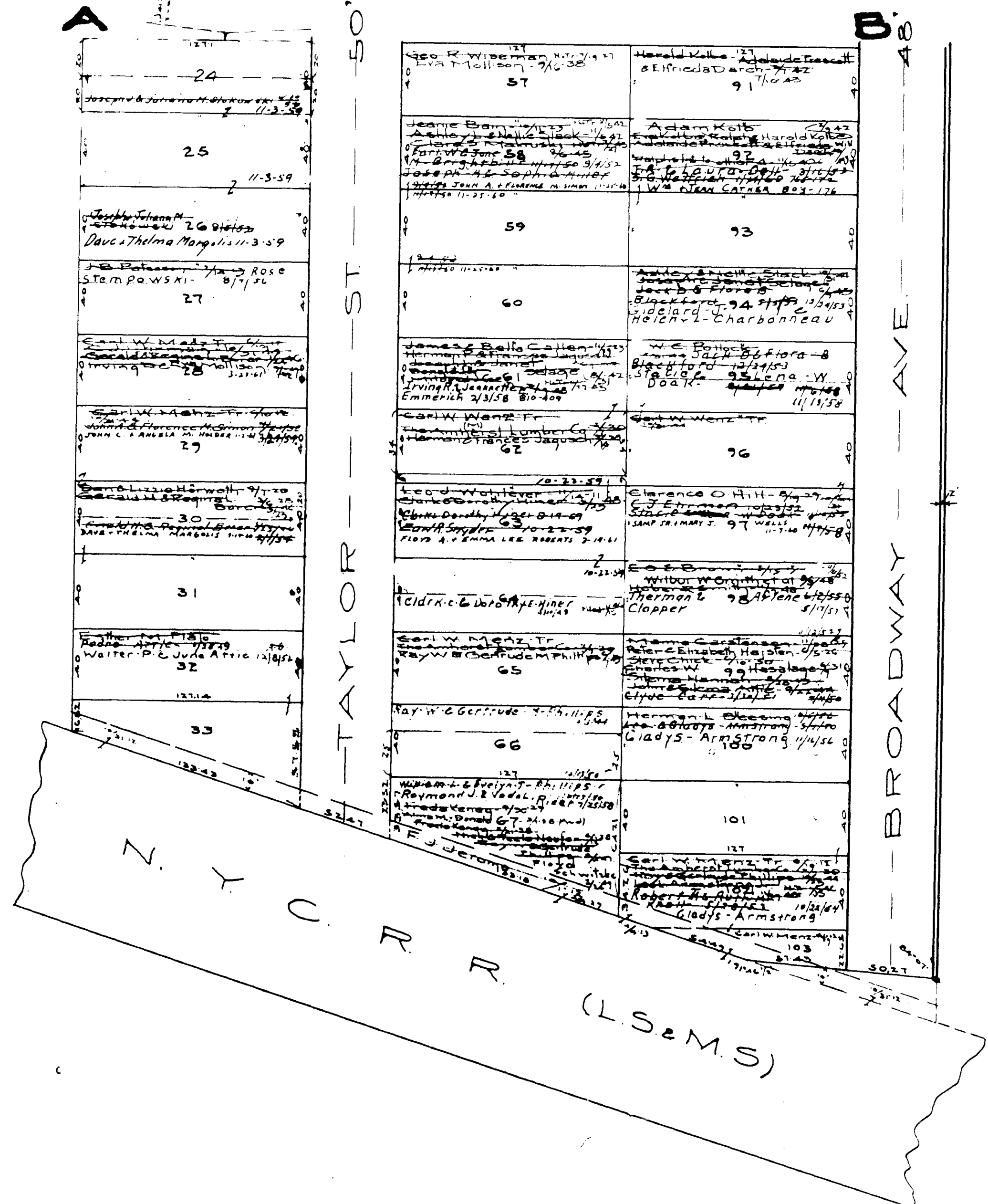
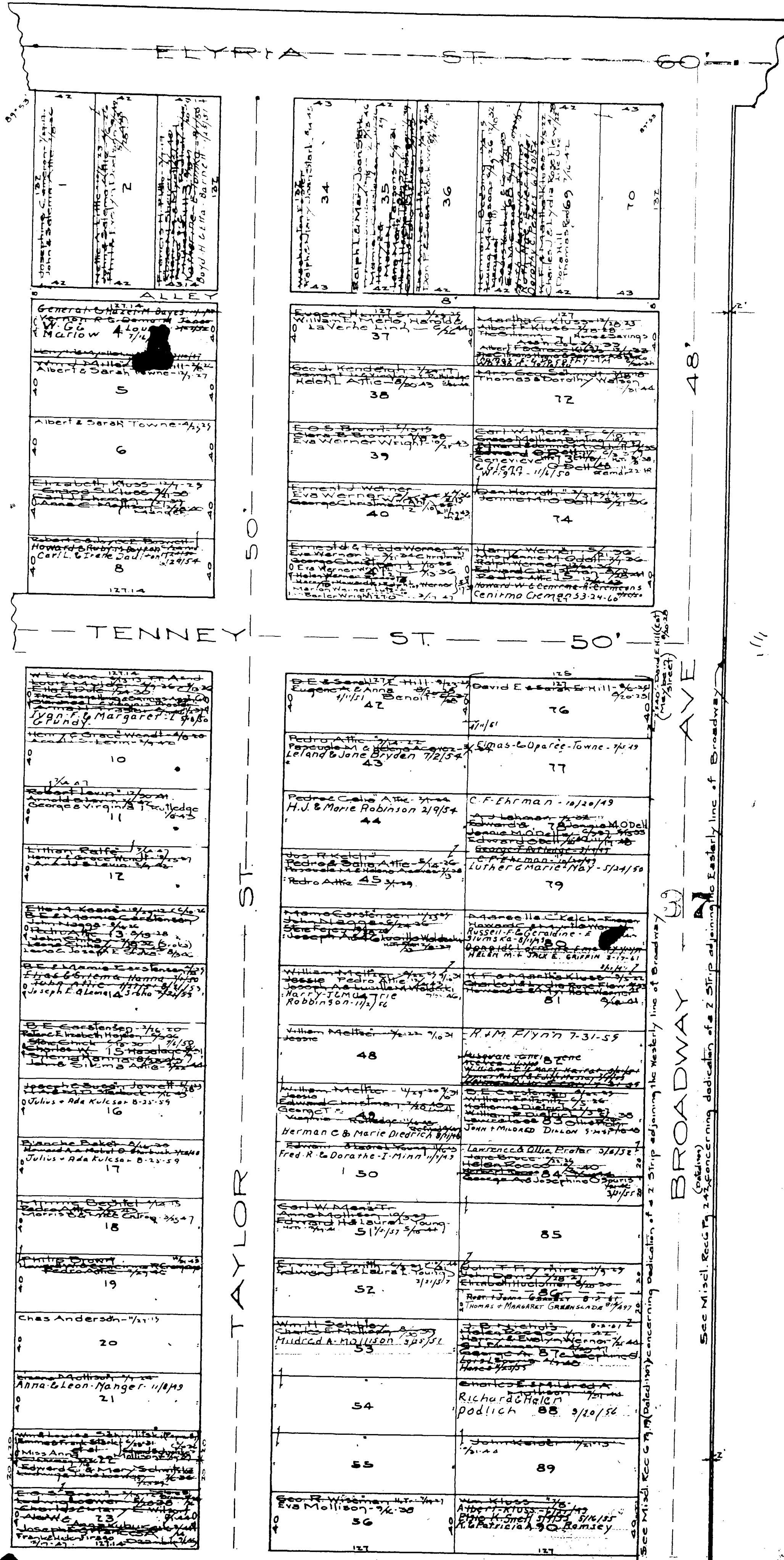
Annexed to Village of Amherst

SANDY RIDGE SUB. NO. 1. 2. 13F

PLEASANT VIEW SUB. 13E

MAP OF AMHERST TOWNSHIP

COPYRIGHT 1962 U.S. CODE, TITLE 17 LORAIN COUNTY, OHIO
 Reproduced by, Allied Microfilm Corp. Akron, Ohio



MAP OF
AMHERST TOWNSHIP

COPYRIGHT 1962
U.S. CODE, TITLE 17
LORAIN COUNTY, OHIO
Reproduced by
Allied Microfilm Corp.
Akron, Ohio

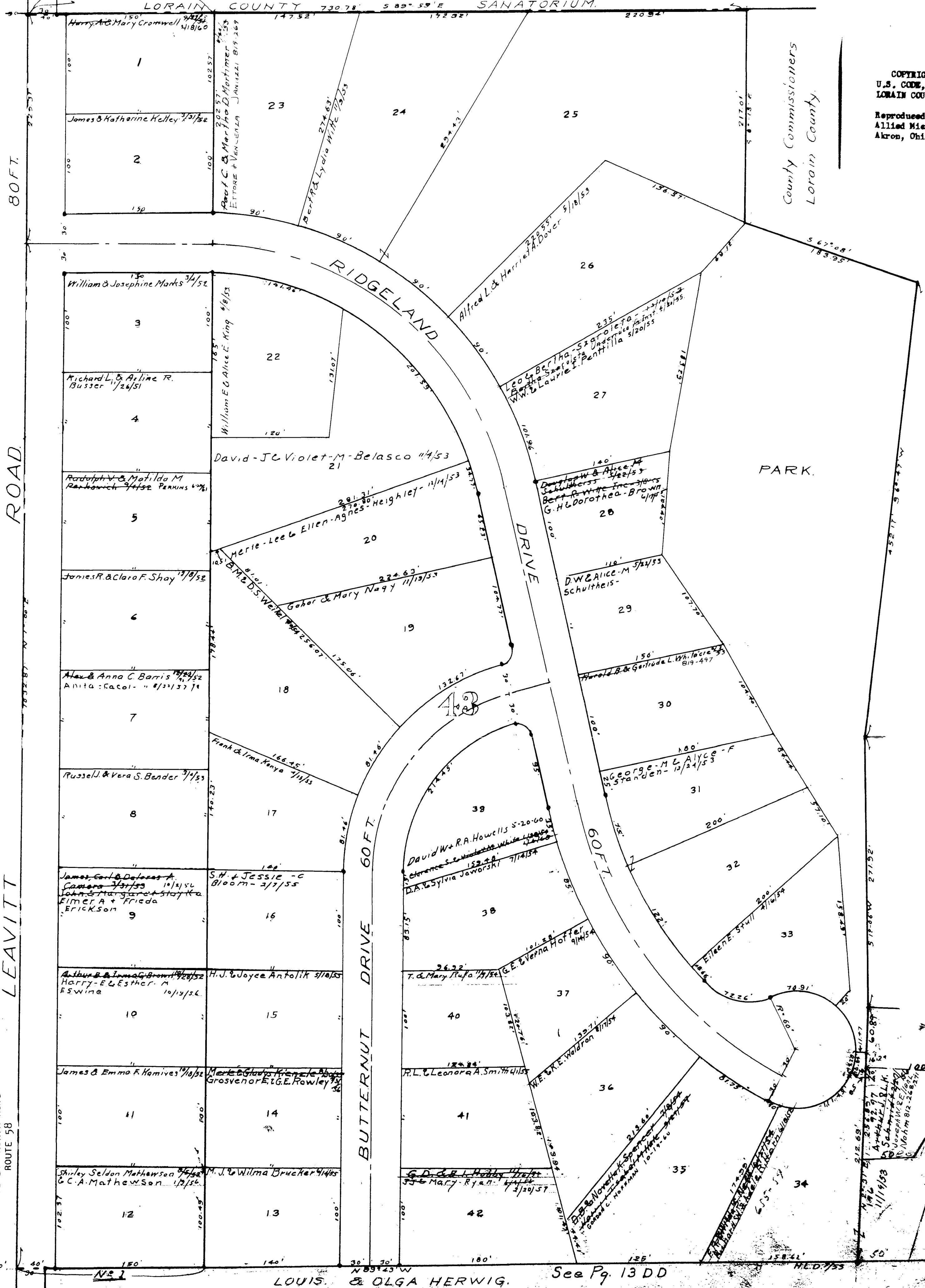
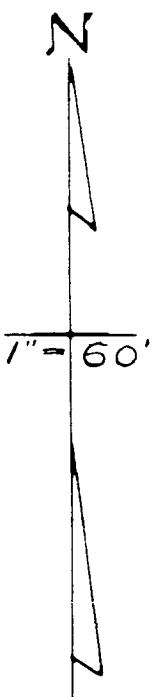
RIDGELAND HEIGHTS SUBDIVISIONS.

No 1. Scale 1" = 60' No 2.
VOL. 15 Pg 21 VOL. 15 Pg 71
LOTS IN BLANK = BERT R & LYDIA WITTE

39

1" = 60'

38



County Commissioners
Lorain County

COPYRIGHT 1962
U.S. CODE, TITLE 17
LORAIN COUNTY, OHIO
Reproduced by,
Allied Microfilm Corp.
Akron, Ohio

MAP OF TOWNSHIP
AMHERST

LEAVITT ROAD

BUTTERNUT DRIVE

RIDGELAND DRIVE

80 FT.

60 FT.

60 FT.

LOUIS & OLGA HERWIG

See Pg. 13 DD

RIDGELAND HEIGHTS SUB. N^o 3
 O.L. 43 AMHERST VILLAGE
 Lots in Blank Charles W. Sr. & Maratha M. Thomas

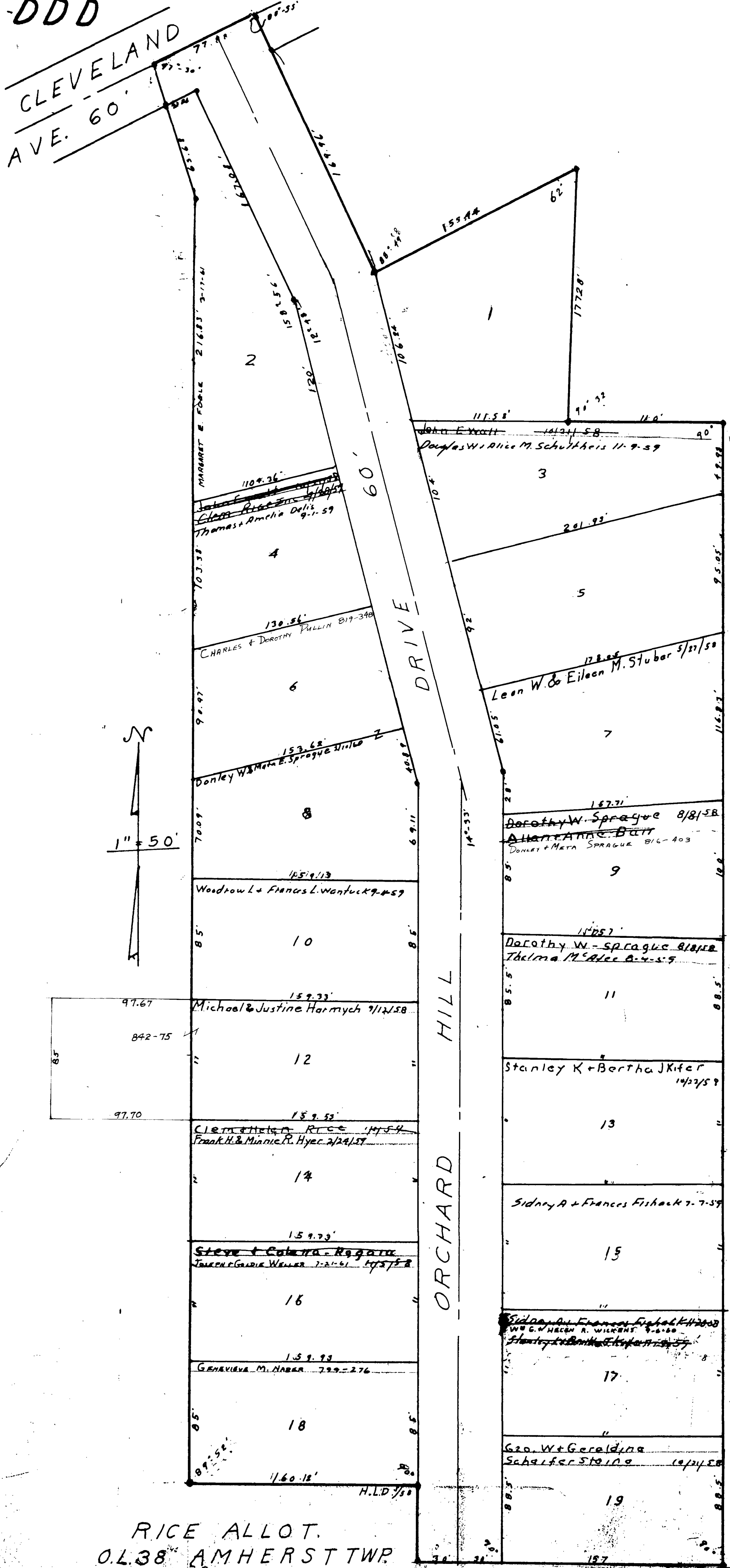
13DD

See Pg. 13D.



MAP OF
 AMHERST TOWNSHIP

COPYRIGHT 1962
 U.S. CODE, TITLE 17
 LORAIN COUNTY, OHIO
 Reproduced by,
 Allied Microfilm Corp.
 Akron, Ohio



RICE ALLOT.
 0.238 AMHERST TWP.
 VOL. 20. Pg. 34-A
 Lots in Blank: Clem Rice Inc.

MAP OF
 AMHERST TOWNSHIP

COPYRIGHT 1962
 U.S. GOVERNMENT, TITLE 17
 LORAIN COUNTY, OHIO
 Reproduced by
 Allied Microfilm Corp.
 Akron, Ohio

COPYRIGHT 1962
U.S. CODE, TITLE 17
LORAIN COUNTY, OHIO

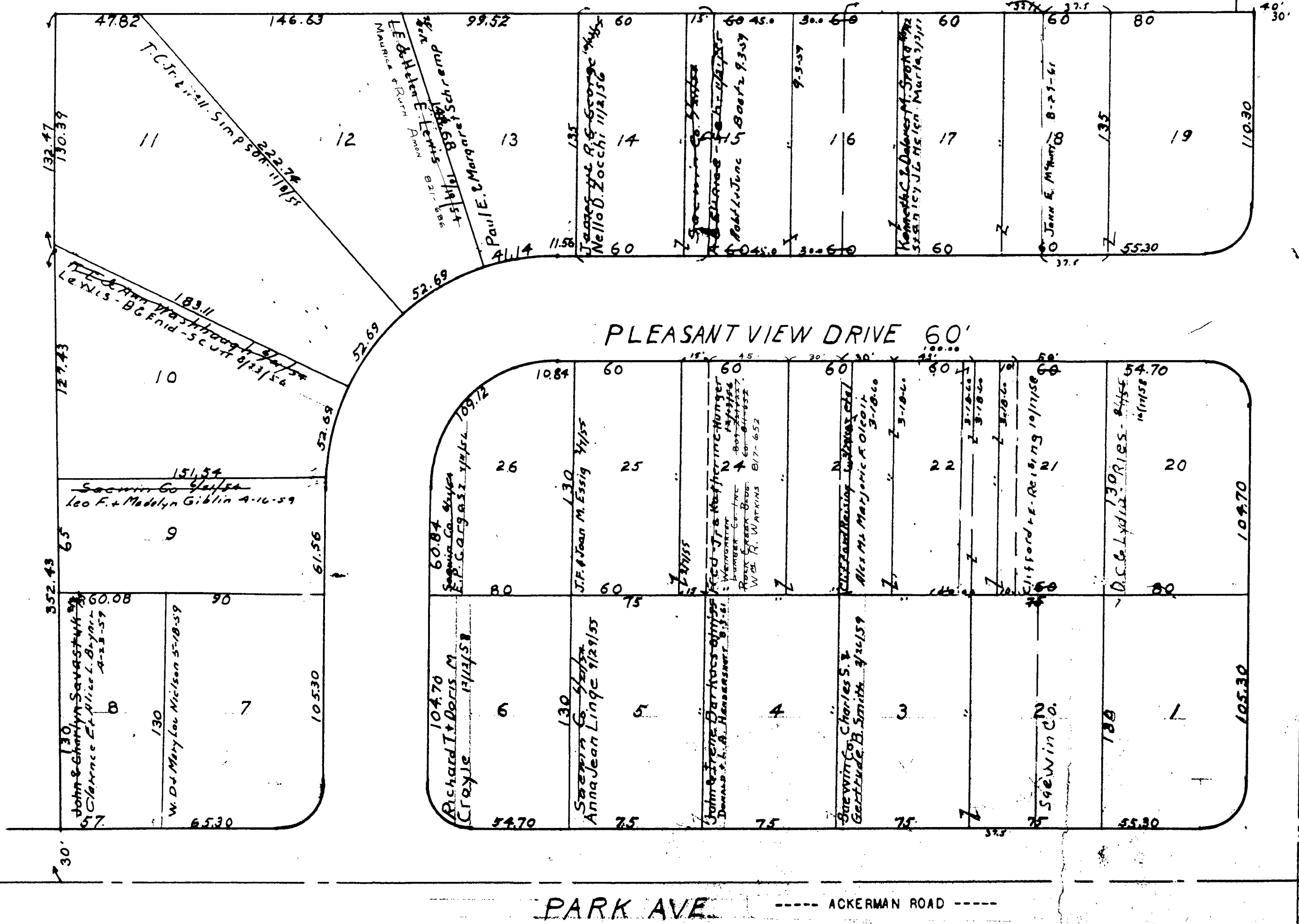
Reproduced by,
Allied Microfilm Corp.
Akron, Ohio

MAP OF
AMHERST TOWNSHIP

PLEASANT VIEW SUBDIVISION

O.L. 38 AMHERST TWP. Lots in blank Hume & Siegfried Inc.

SANDY RIDGE SUB. N.A. Vol. 15 Pg. 17

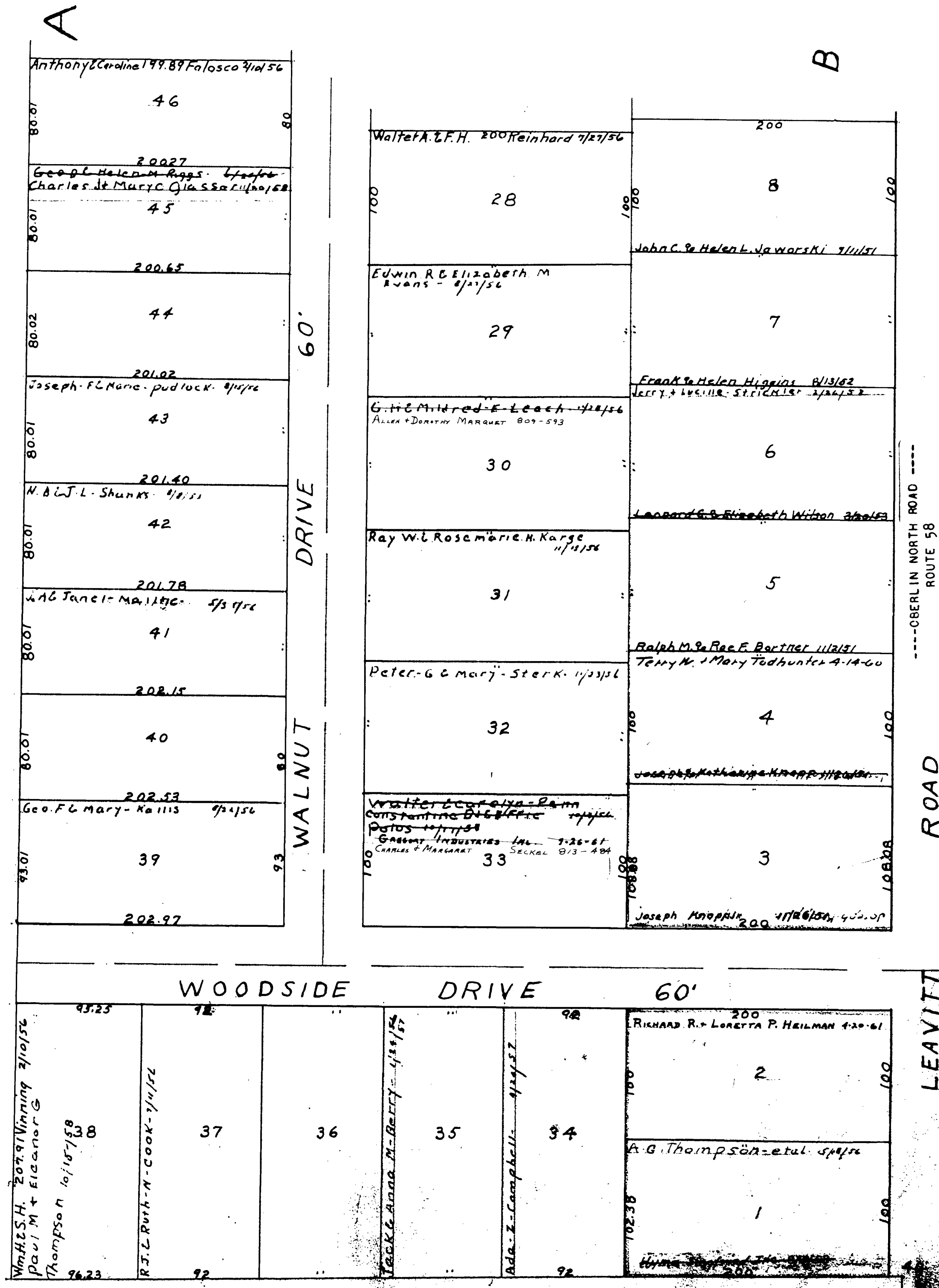
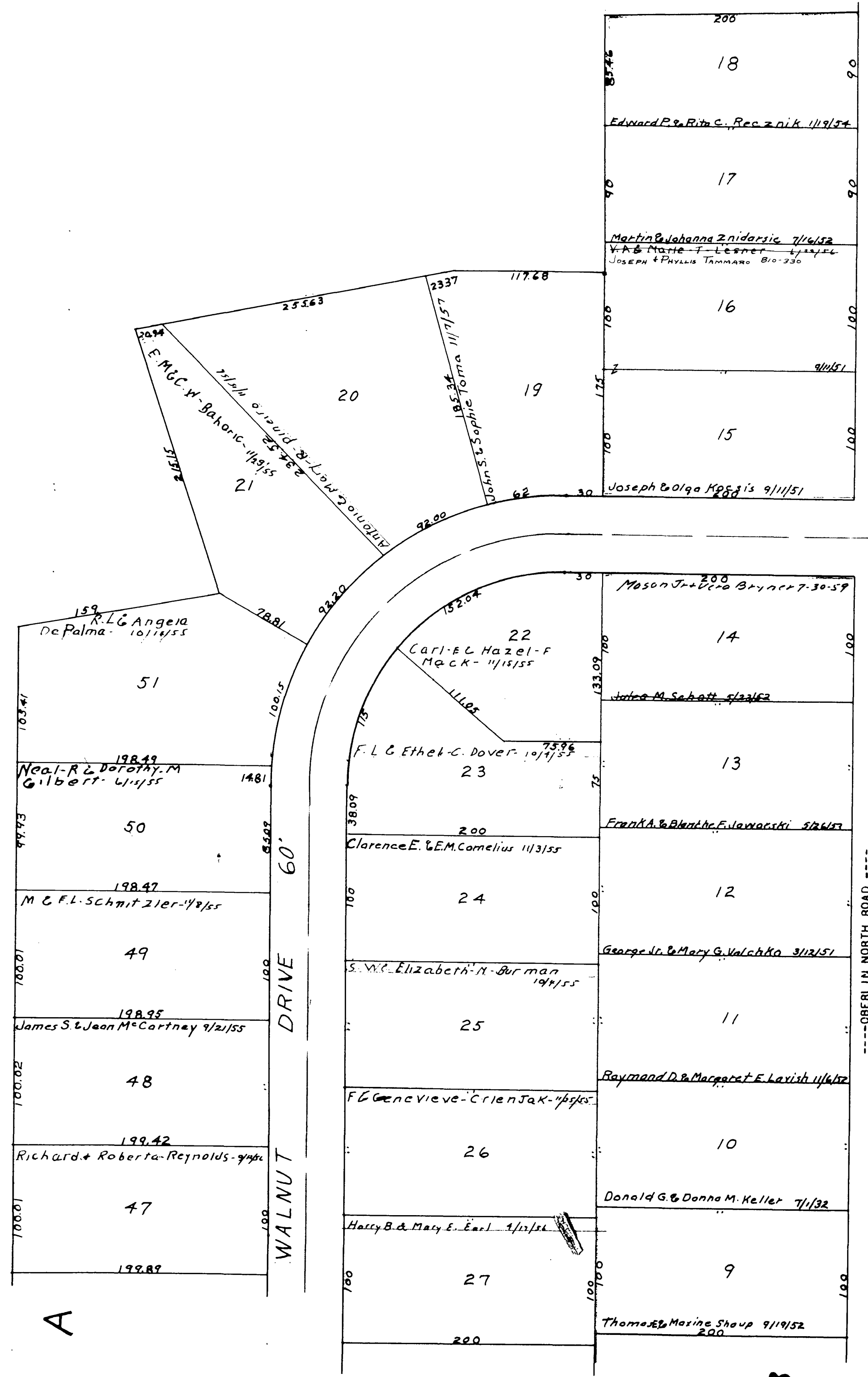


SANDY RIDGE SUBS. NOS. 1, 2

O.L. 38 AMHERST TWP Vol. 15 Pg. 17
Sub. M/Lots in Blank W.H. & Rose Baker
" 2 " " " Bert R. & Ernest B. Witte " 17 " 9
NO. 1 Outlined in Red

MAP OF AMHERST TOWNSHIP

COPYRIGHT 1962
U.S. CODE, TITLE 17
LOHAIN COUNTY, OHIO
Reproduced by,
Allied Microfilm Corp.
Akron, Ohio

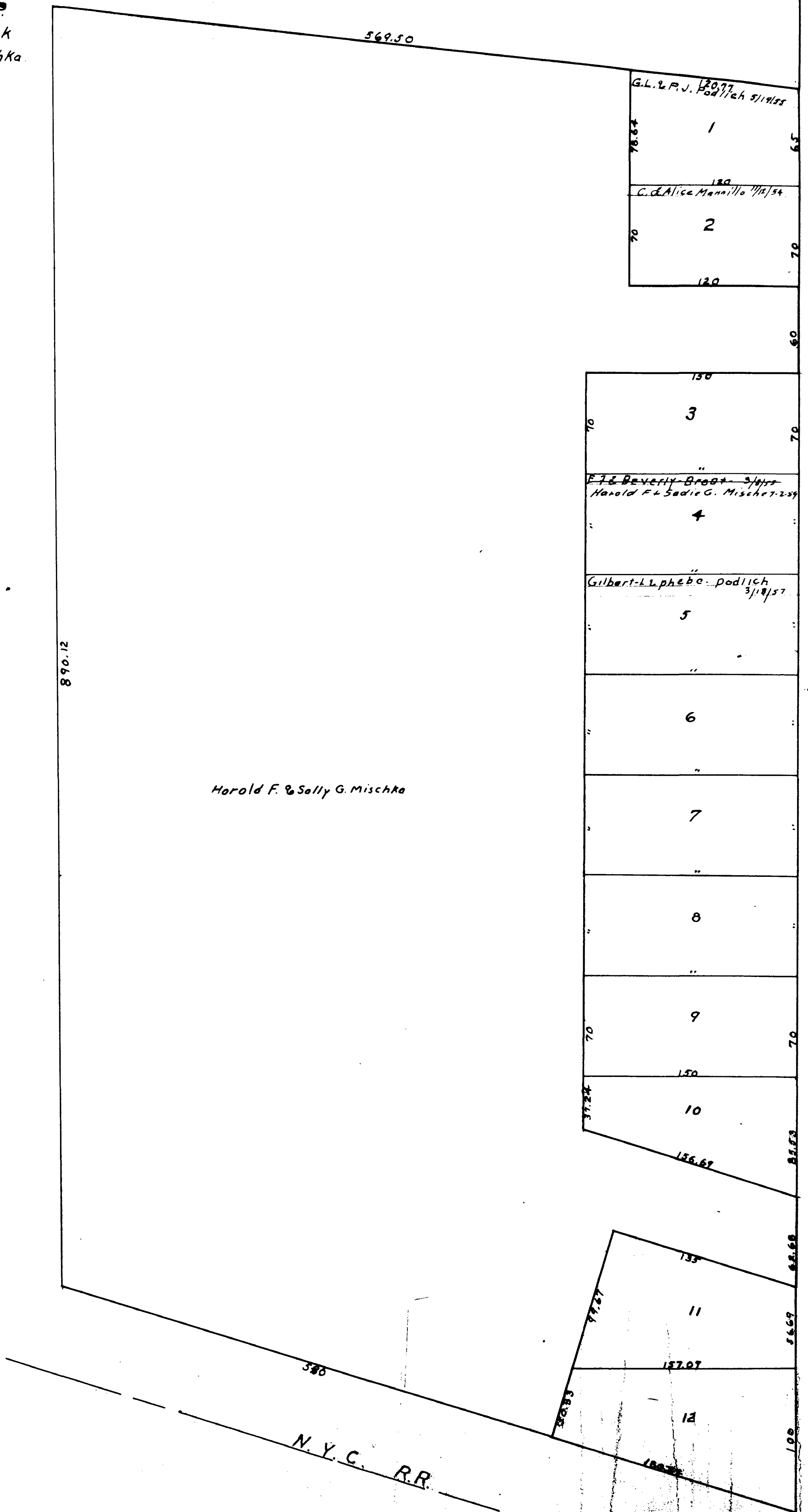


400
30'
---OBERLIN NORTH ROAD ---
ROUTE 58

LEAVITT ROAD

NORTHGATE SUB.
 O.L. 37 AMHERST TWP
 Lots in blank
 H.F. & S.G. Mischka
 Vol. 17 Pg. 13

13 G



Harold F. & Sally G. Mischka

818.63
 TO RICH AVE. E

924.42

ROAD

LEAVITT

---OBERLIN NORTH ROAD ---
 ROUTE 58

45° 30'

COPYRIGHT 1962
 U.S. GDS., TITLE 17
 LORAIN COUNTY, OHIO
 Reproduced by,
 Allied Microfilm Corp.
 Akron, Ohio

MAP OF
 AMHERST TOWNSHIP