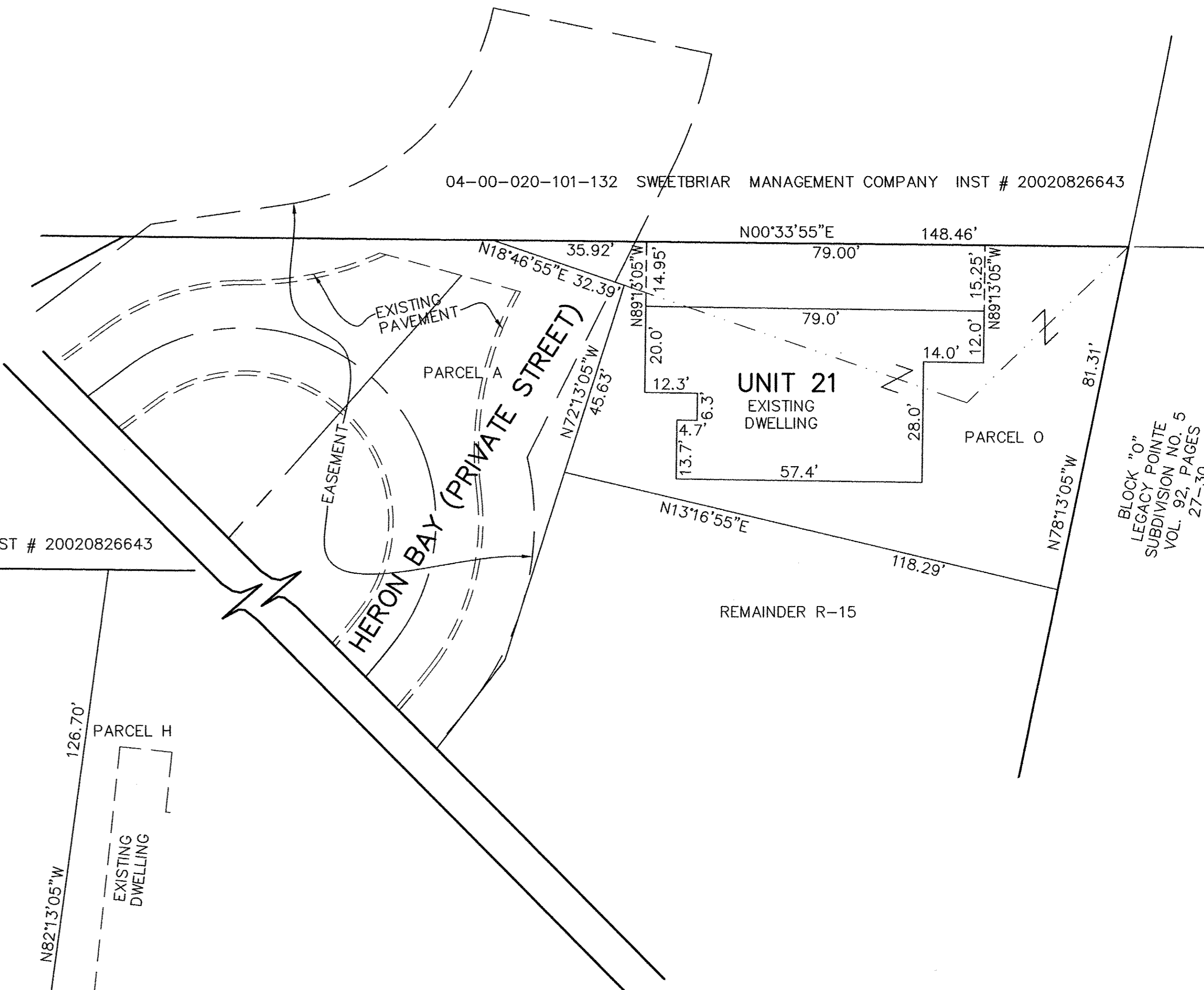




UNIT #21 FRONT VIEW

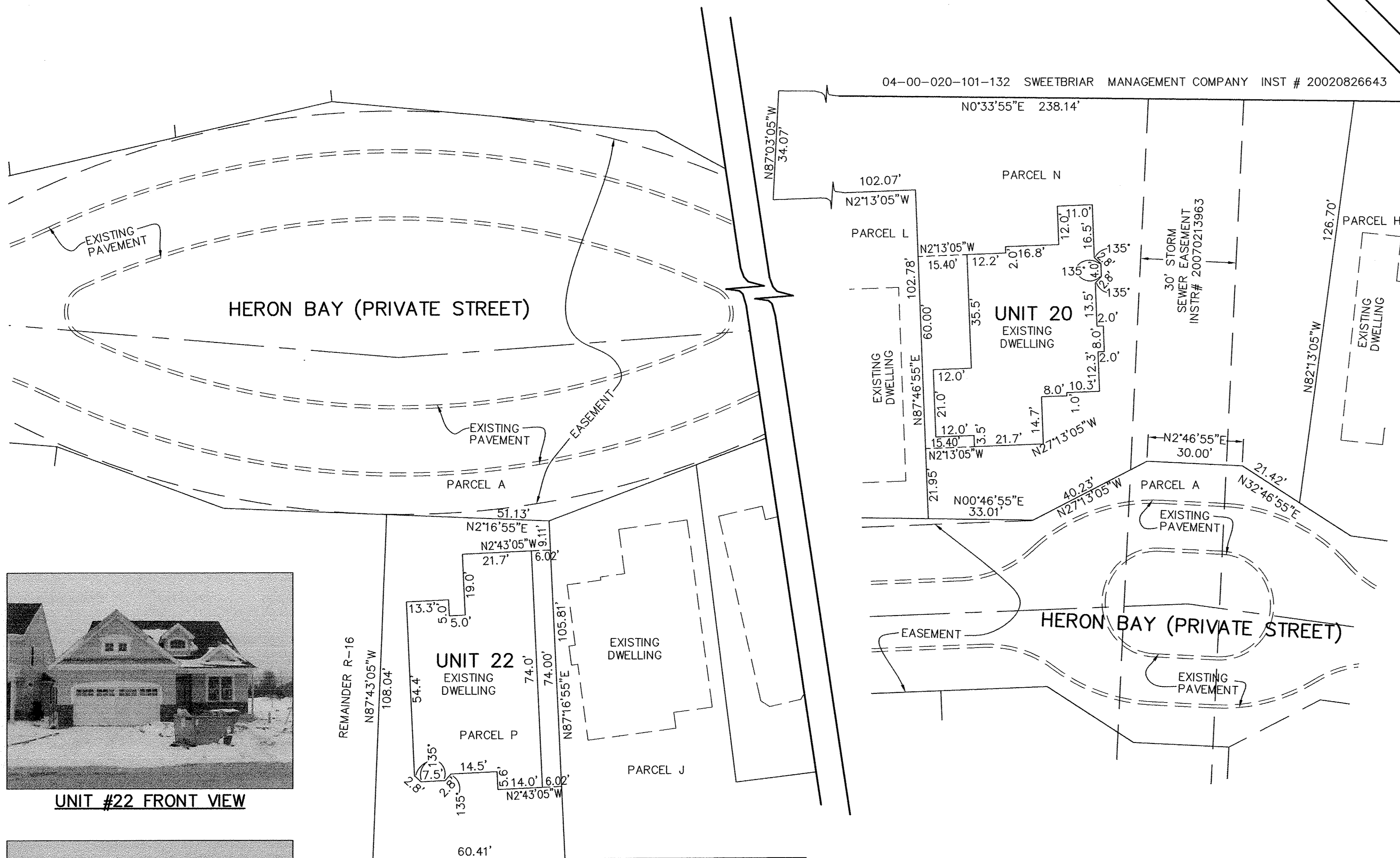


UNIT #21 REAR VIEW

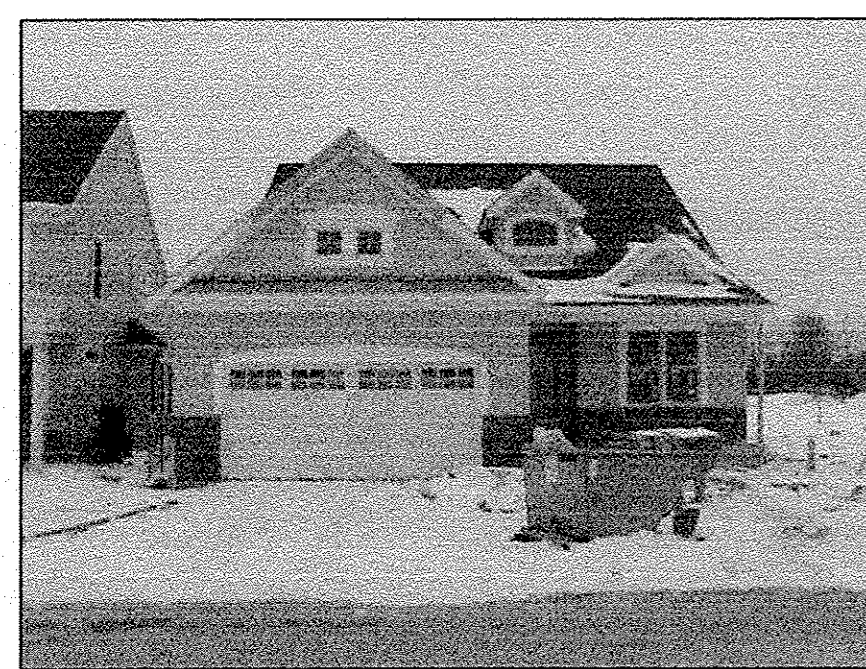


04-00-020-101-132 SWEETBRIAR MANAGEMENT COMPANY INST # 20020826643

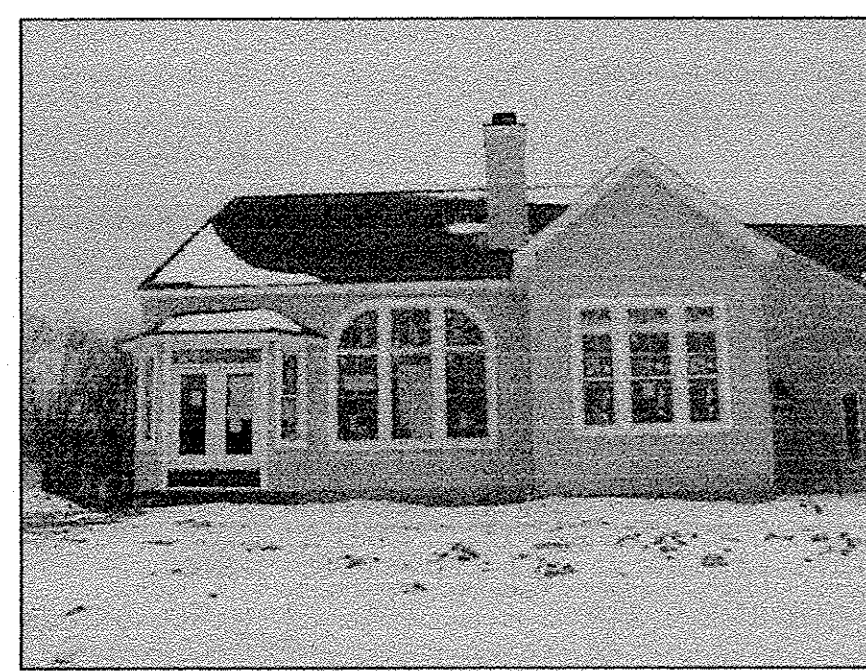
BLOCK "O"
LEGACY POINTE
SUBDIVISION NO. 5
VOL. 92, PAGES
27-30



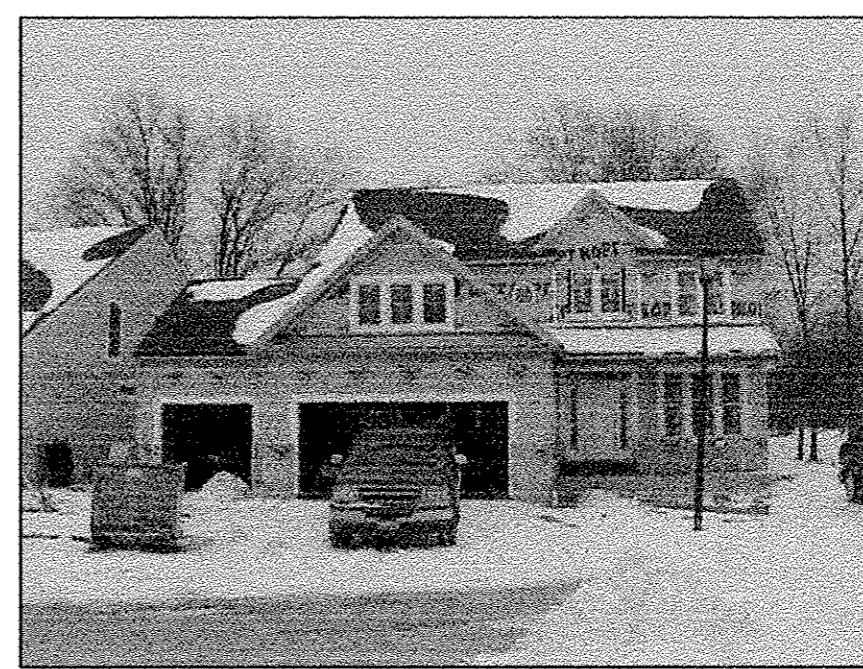
04-00-020-101-132 SWEETBRIAR MANAGEMENT COMPANY INST # 20020826643



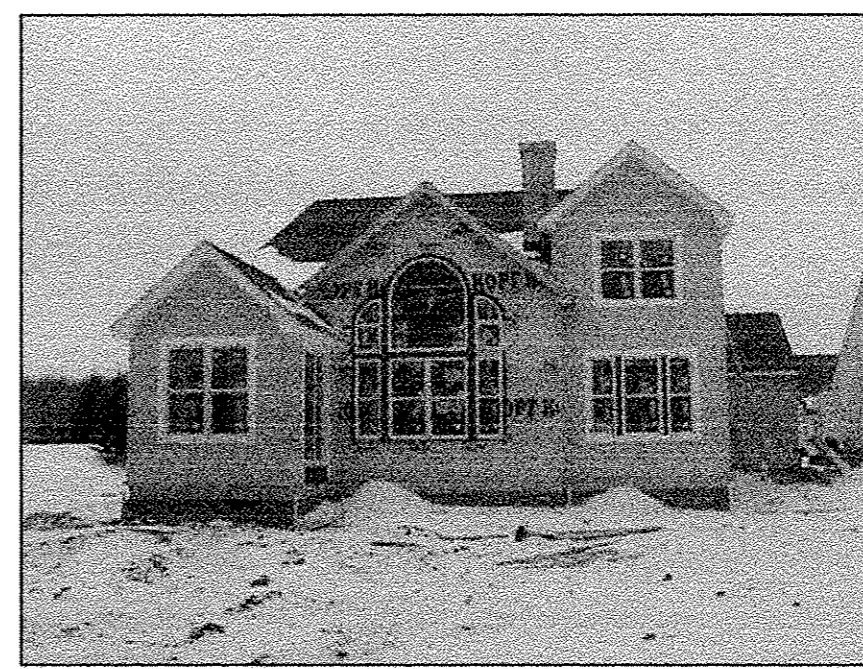
UNIT #22 FRONT VIEW



UNIT #22 REAR VIEW



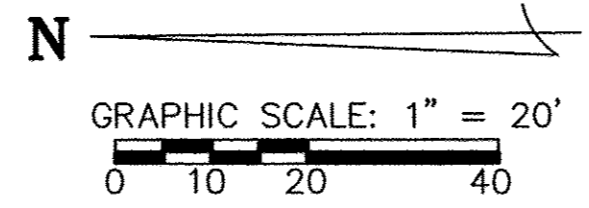
UNIT #20 FRONT VIEW



UNIT #20 REAR VIEW

30' MAINTENANCE
EASEMENT
INSTR# 20070213961

BLOCK "O"
LEGACY POINTE
SUBDIVISION NO. 5
VOL. 92, PAGES 27-30



NOTES:
LIMITED COMMON AREAS INCLUDE THE LAND WITHIN 3 FEET FROM THE FOUNDATION AND PATIOS/DECKS/PORCHES/SUNROOMS OF EACH UNIT.
ALL ANGLES BETWEEN WALLS ARE 90° UNLESS OTHERWISE SPECIFIED

| REVISIONS | DATE | DESCRIPTION |
|-----------|------|-------------|
| | | |
| | | |
| | | |
| | | |

**LEGACY POINTE
CONDOMINIUM NO. 6 PH 8**
BEING PART OF BLOCK "P" IN THE LEGACY POINTE SUBDIVISION NO. 5 AS RECORDED IN VOL. 92 OF PLATS, PGS. 27-30 OF LORAIN COUNTY RECORDS, OF PART OF ORIGINAL AVON TWP. SECTION 17 CITY OF AVON LAKE, COUNTY OF LORAIN, OHIO

**THE HENRY G. REITZ
ENGINEERING COMPANY**
4214 ROCKY RIVER DRIVE
CLEVELAND, OHIO 44135
PHONE: (216) 251-3033

2
2
MARCH
2014