

WOODBIDGE COURT SUBDIVISION No. 3

SITUATED IN THE STATE OF OHIO, COUNTY OF LORAIN, CITY OF NORTH RIDGEVILLE, KNOWN AS BEING A PART OF ORIGINAL RIDGEVILLE TOWNSHIP LOT No. 11 AND BEING FURTHER KNOWN AS A "RE-SUBDIVISION" OF BLOCK "B" OF RIDGEFIELD SUBDIVISION No. 1 AS SHOWN BY THE PLAT RECORDED IN VOLUME 55, PAGES 45 & 46 OF PLATS.
* HOMES INC.

ALL EASEMENTS AND RIGHTS-OF-WAY REFERENCED HEREON ARE EXISTING AND ARE ESTABLISHED BY THE PLAT OF RIDGEFIELD HOMES SUBDIVISION No. 1 AS RECORDED IN PLAT VOLUME 55, PAGES 45 & 46.

THIS SUBDIVISION IS BOUND TO THE "DECLARATION OF COVENANTS AND RESTRICTIONS" OF RIDGEFIELD SUBDIVISION RECORDED IN O. R. Volume 1372, Page 625 OF THE LORAIN COUNTY RECORDS

ACCEPTANCE:

I, DENNIS STEED, ATTORNEY-IN-FACT FOR DON (HD) STEED, TRUSTEE OF THE DON STEED REVOCABLE TRUST, OWNER OF THE LANDS SHOWN HEREON BY DEED RECORDED IN INSTRUMENT No. 20130454545 OF THE LORAIN COUNTY RECORDS, DO HEREBY ACCEPT THIS PLAT AND SUBDIVISION OF SAME.

Dennis Steed ATTORNEY-IN-FACT FOR DON (HD) STEED, TRUSTEE
DENNIS STEED, ATTORNEY-IN-FACT FOR DON (HD) STEED, TRUSTEE

STATE OF OHIO, COUNTY OF LORAIN :

THE FOREGOING INSTRUMENT WAS ACKNOWLEDGED BEFORE ME THIS NOVEMBER 8, 2013, BY DENNIS STEED AS ATTORNEY-IN-FACT ON BEHALF OF DON (HD) STEED, TRUSTEE.

Kevin Corcoran
NOTARY PUBLIC

KEVIN CORCORAN, Esq.
Notary Public, State of Ohio
My Commission Expires

MY COMMISSION EXPIRES

APPROVALS:

THIS PLAT IS APPROVED BY THE CITY OF NORTH RIDGEVILLE BUILDING DEPARTMENT THIS 12th DAY OF NOVEMBER, 2013.
PLANNING COMMISSION

Jay McSwain
BUILDING COMMISSIONER
RESPONSIBLE OFFICIAL FOR PLANNING COMMISSION

THIS PLAT APPROVED BY THE CITY OF NORTH RIDGEVILLE MAYOR THIS 12th DAY OF NOVEMBER, 2013

David Millock
MAYOR

ACREAGE BREAKDOWN
SUBLOTS - 1.0396 Ac.
BLOCK - 1.9994 Ac.
TOTAL - 3.0390 Ac.

TRANSFERRED
IN COMPLIANCE WITH SEC. 319.202
OHIO REV. CODE
DEC 11 2013
File

J. CRAIG SHODGRASS, CPA, CGFM
LORAIN COUNTY AUDITOR

Doc ID: 017780640001 Type: OFF
Kind: PLAT
Recorded: 12/11/2013 at 09:21:23 PM
Fee Amt: \$90.40 Page 1 of 1
Lorain County, Ohio
Justin M. Medlock, County Recorder
File # 2013-0489040

KEVIN CORCORAN
32563 BLUFFSTONE CIRCLE
NORTH RIDGEVILLE, OH 44039

Vol - 99
Pg - 50

TRANSFERRED
IN COMPLIANCE WITH SEC. 319.202
OHIO REV. CODE
DEC 10 2013
File

J. CRAIG SHODGRASS, CPA, CGFM
LORAIN COUNTY AUDITOR

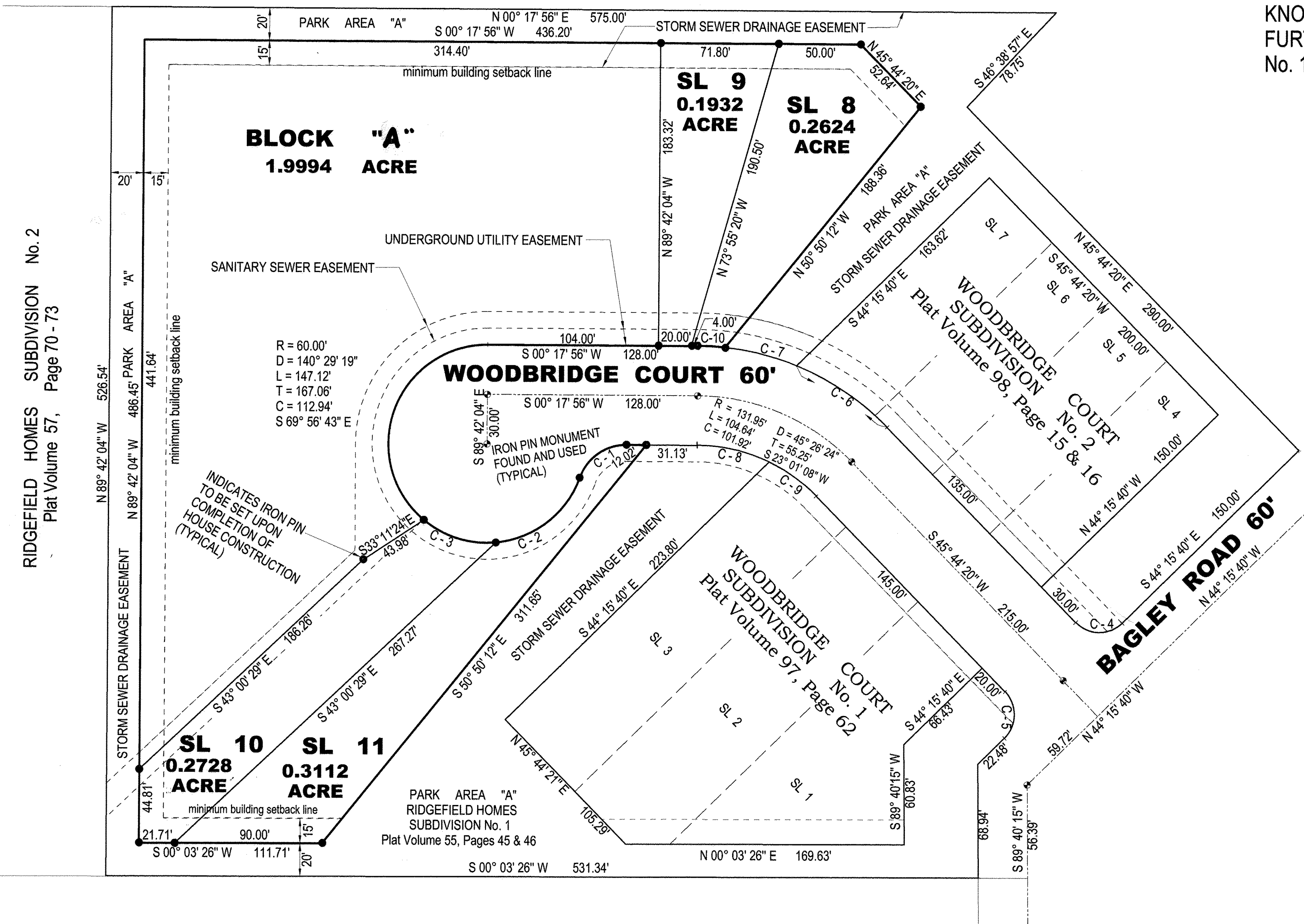
NO TRANSFER NECESSARY
J. CRAIG SHODGRASS, CPA, CGFM
LORAIN COUNTY AUDITOR

ZWICK ASSOCIATES, INC.
ENGINEERS - SURVEYORS - PLANNERS

8750 STEARNS ROAD, OLMSTED TOWNSHIP, OHIO 44138
Phone: (440) 235-2729 Fax: (440) 235-0604
E-mail: PETER@ZWICKENGINEERING.COM

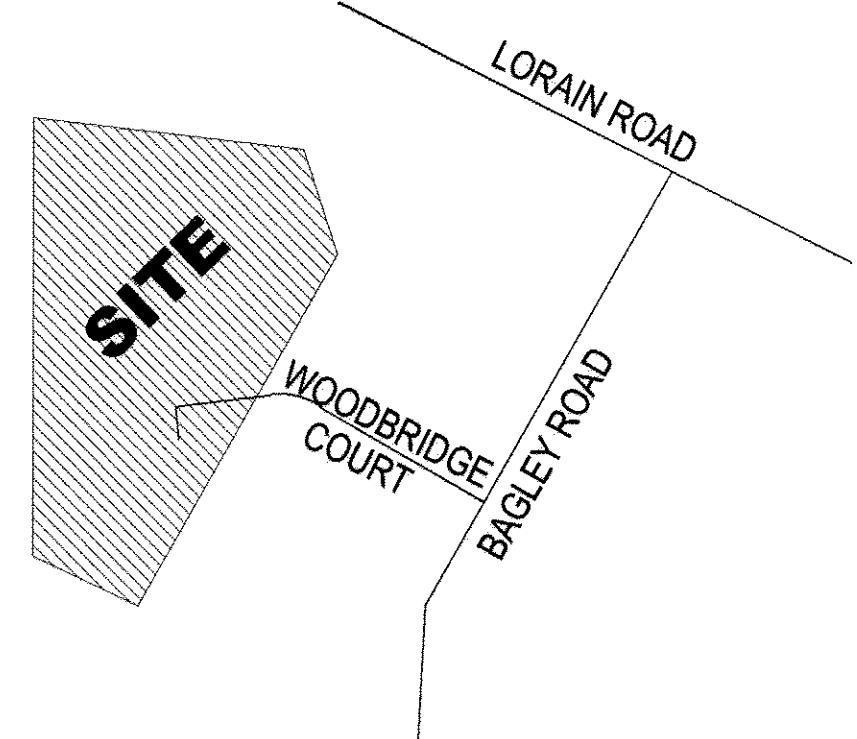
NORTH DATUM USED IS THE BEARING OF RECORD FOR THE CENTERLINE OF WOODBRIDGE COURT AS ESTABLISHED BY THE PLAT OF RIDGEFIELD SUBDIVISION No. 1 RECORDED IN VOLUME 55, PAGES 45 & 46 OF PLATS.

Peter D. Zwick
PETER D. ZWICK, P. S. No. 7429
OCTOBER 7, 2013

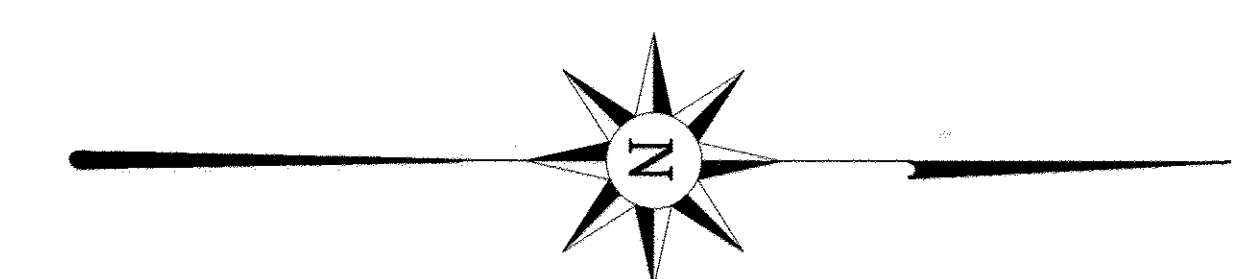


CURVE DATA

C - 1 R = 30.00' D = 70° 31' 44" L = 36.93' T = 21.21' C = 34.64' N 34° 57' 56" W	C - 2 R = 60.00' D = 64° 58' 34" L = 68.04' T = 38.21' C = 64.45' N 37° 44' 30" W	C - 3 R = 60.00' D = 90° 00' 50" L = 47.19' T = 24.89' C = 45.98' N 17° 16' 42" E	C - 4 R = 20.00' D = 90° 00' 00" L = 31.42' T = 20.00' C = 28.28' S 00° 44' 20" W	C - 5 R = 20.00' D = 90° 00' 00" L = 31.42' T = 20.00' C = 28.28' S 89° 15' 40" E
C - 6 R = 161.95' D = 23° 39' 50" L = 66.89' T = 33.93' C = 66.41' N 33° 54' 26" E	C - 7 R = 161.95' D = 15° 54' 42" L = 44.97' T = 22.63' C = 44.83' N 14° 07' 09" E	C - 8 R = 101.95' D = 25° 21' 39" L = 45.12' T = 22.94' C = 44.76' N 12° 58' 45" E	C - 9 R = 101.95' D = 20° 04' 46" L = 35.73' T = 18.05' C = 35.54' N 35° 41' 58" E	C - 10 R = 161.95' D = 05° 51' 52" L = 16.58' T = 8.30' C = 16.57' S 03° 13' 52" W



VICINITY MAP (NO SCALE)



SCALE: 1" = 40'
0' 20' 40' 80' 120'

RIDGEFIELD HOMES SUBDIVISION No. 2
Plat Volume 57, Page 70 - 73