

CURVE DATA

(C6)
 P.I. Sta. 53+59.26
 Δ = 13° 51' 34" (LT)
 Dc = 11° 45' 00"
 R = 487.62'
 T = 59.27'
 L = 117.95'
 E = 3.59'
 C = 117.66'
 C.B. = N 27° 41' 20" E

(C7)
 P.I. Sta. 58+14.53
 Δ = 7° 51' 02" (LT)
 Dc = 2° 00' 00"
 R = 2,864.91'
 T = 196.58'
 L = 392.55'
 E = 6.74'
 C = 392.24'
 C.B. = N 5° 05' 02" E

(C18)
 P.I. Sta. 53+94.90
 Δ = 43° 19' 31" (RT)
 Dc = 11° 45' 00"
 R = 487.62'
 Ls = 200.00'
 θs = 11° 45' 00"
 LT = 133.63'
 ST = 66.93'
 x = 199.16'
 y = 13.63'
 k = 99.86'
 p = 3.41'
 Δc = 19° 49' 31" (RT)
 Lc = 168.73'
 Ts = 294.90'
 Es = 40.73'
 C = 167.89'
 C1 = C2 = 199.63'
 C.B.1 = N 38° 15' 06" W
 C.B. = N 20° 30' 15" W
 C.B.2 = S 2° 45' 24" E

LORAIN COUNTY, CITY OF ELYRIA
 ORIGINAL ELYRIA TOWNSHIP LOT NOS. 29, 30, 31, 32, 33 & 34 WEST OF RIVER TRACT
 AND ORIGINAL ELYRIA TOWNSHIP LOT NOS. 13, 14, 15 & 16 BRACE TRACT
 TOWNSHIP 6 NORTH, RANGE 17 WEST

MONUMENT LEGEND

- ▣ EXISTING R/W MONUMENT BOX
- ▣ PROPOSED R/W MONUMENT BOX
- ⊙ EXISTING CONCRETE MONUMENT
- I.P.F. IRON PIN FOUND
- I.P.S. IRON PIN SET W/ ID CAP
- ⊙ I.P.F. IRON PIPE FOUND
- P.K.F. P.K. NAIL FOUND
- ⊙ RAILROAD SPIKE FOUND
- ✱ RAILROAD SPIKE SET

SURVEYOR'S NOTES

1. HORIZONTAL AND VERTICAL CONTROL FOR THIS PROJECT WAS ESTABLISHED BY ODOT.

2. THE BASIS OF BEARINGS FOR THIS SURVEY IS OHIO STATE PLANE, NORTH ZONE NAD83 (CORS96) GRID NORTH BASED ON GPS OBSERVATION.

THIS SURVEY IS ON GROUND COORDINATES.

GRID (METERS) VALES WERE CONVERTED TO GROUND (U.S. SURVEY FEET) VALUES USING A PROJECT ADJUSTMENT FACTOR (PAF) OF 3.281087292.

3. CENTERLINE OF RIGHT OF WAY OF STATE ROUTE 57 AND I-90 WERE DETERMINED BY ODOT. ALL OTHER CENTERLINES OF RIGHTS OF WAY WERE DETERMINED BY A SURVEY PERFORMED BY KS ASSOCIATES IN AUGUST AND SEPTEMBER, 2010.

4. EXISTING RIGHT OF WAY WIDTH AND LOCATION WERE DETERMINED BY CENTERLINE MONUMENTS FOUND, LORAIN COUNTY RECORDS AND TAX MAPS. ADDITIONAL RECORDS USED ARE AS LISTED BELOW:

RECORD PLATS:
 LEONA HEIGHTS ALLOTMENT
 P.V. 6, P. 35
 CASSELL INDUSTRIAL PARK
 P.V. 35 P. 3
 SCHADEN SUBDIVISION
 P.V. 7 P. 19
 SCHADEN ESTATES
 P.V. 34 P. 79

ROADWAY PLANS:
 OHIO TURNPIKE
 COMMISSION PROJECT NO. 1
 LOR-57-18.62
 LOR-57-16.94
 LOR-57-17.70
 LOR-254-4.08 B
 LOR-90-13.01

Doc ID: 01768310001 Type: OFF
 Kind: PLAT
 Recorded: 09/25/2013 at 03:38:35 PM
 Fee Amt: \$864.00 Page 1 of 1
 Lorain County, Ohio
 Judith H. Nedlock County Recorder
 File: 2013-0480188

TRANSFERRED
 IN COMPLIANCE WITH SEC. 319-202
 OHIO REV. CODE
 SEP 25 2013
 J. CRAIG SNODGRASS, CPA, CGFM
 LORAIN COUNTY AUDITOR

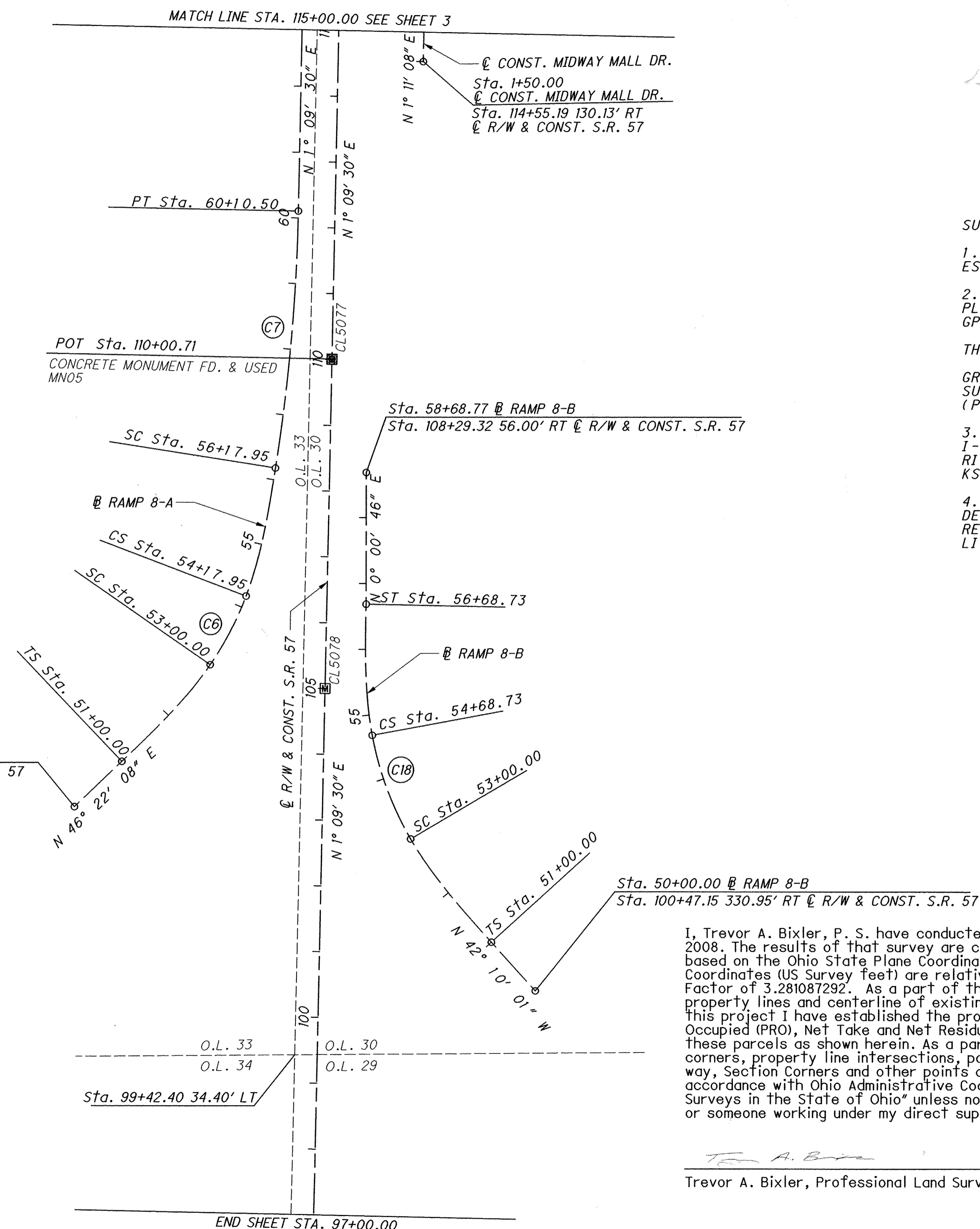
ODOT
 908 N CLARK STREET
 ASHLAND, OH 44805
 Plat Vol. 99
 Pgs 18 Thru 28 inclusive

I, Trevor A. Bixler, P. S. have conducted a survey of the existing conditions in August and September, 2008. The results of that survey are contained herein. The horizontal coordinates expressed herein are based on the Ohio State Plane Coordinate System, North Zone on NAD 83 CORS96 datum. The Project Coordinates (US Survey feet) are relative to State Plane Grid Coordinates (meters) by a Project Adjustment Factor of 3.281087292. As a part of this project I have reestablished the locations of the existing property lines and centerline of existing Right of Way for property takes contained herein. As a part of this project I have established the proposed property lines, calculated the Gross Take, Present Roadway Occupied (PRO), Net Take and Net Residue; as well as prepared the legal descriptions necessary to acquire these parcels as shown herein. As a part of this work I have set right of way monuments at the property corners, property line intersections, points along the right of way and/or angle points on the right of way, Section Corners and other points as shown herein. All of my work contained herein was conducted in accordance with Ohio Administrative Code 4733-37 commonly known as "Minimum Standards for Boundary Surveys in the State of Ohio" unless noted. The words I and my as used herein are to mean either myself or someone working under my direct supervision.

Trevor A. Bixler
 Trevor A. Bixler, Professional Land Surveyor No. 7730 Date: 5-15-13



RECEIVED _____, 20____
 RECORDED _____, 20____
 BOOK _____ PAGE _____
 COUNTY RECORDER



R/W DESIGNER MAM
 R/W REVIEWER TAB
 P.D. NO. 82645
 CENTERLINE PLAT
 LOR-57-19.42
 1/10
 2/83
 860
 941

R:\07000\07122\ODOT PROJECT FILE\OR\82645\row\sheets\82645R0001.dgn 5/16/2013 12:00:51 PM mcnulty

LORAIN COUNTY, CITY OF ELYRIA
 ORIGINAL ELYRIA TOWNSHIP LOT NOS. 29, 30, 31, 32, 33 & 34 WEST OF RIVER TRACT
 AND ORIGINAL ELYRIA TOWNSHIP LOT NOS. 13, 14, 15 & 16 BRACE TRACT
 TOWNSHIP 6 NORTH, RANGE 17 WEST

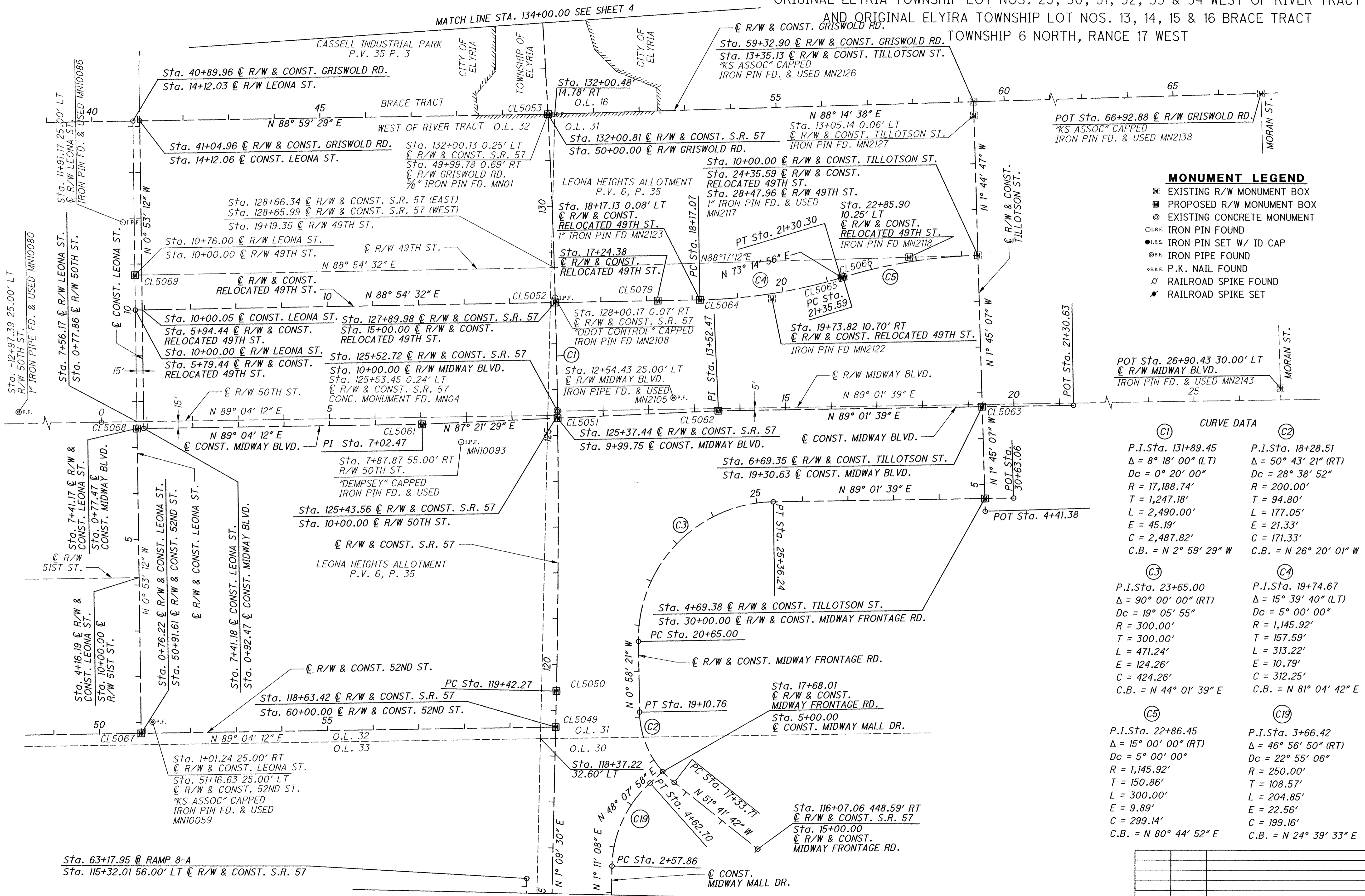


PID NO. **82645**
 R/W DESIGNER MAM
 R/W REVIEWER TAB

CENTERLINE PLAT

LOR-57-19.42

2/10
 3/83
 861
 941



- MONUMENT LEGEND**
- ☐ EXISTING R/W MONUMENT BOX
 - ▣ PROPOSED R/W MONUMENT BOX
 - ⊙ EXISTING CONCRETE MONUMENT
 - I.P.F. IRON PIN FOUND
 - I.P.S. IRON PIN SET W/ ID CAP
 - ⊙ I.P.F. IRON PIPE FOUND
 - ⊙ P.K.F. P.K. NAIL FOUND
 - ⊙ RAILROAD SPIKE FOUND
 - ⊙ RAILROAD SPIKE SET

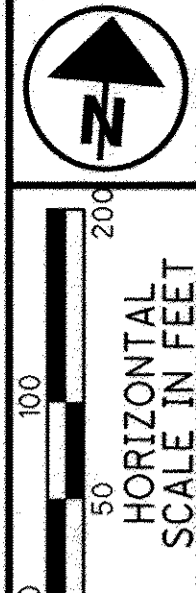
CURVE DATA

Curve	P.I. Sta.	Δ	Dc	R	T	L	E	C	C.B.
C1	131+89.45	8° 18' 00" (LT)	0° 20' 00"	17,188.74'	1,247.18'	2,490.00'	45.19'	2,487.82'	N 2° 59' 29" W
C2	18+28.51	50° 43' 21" (RT)	28° 38' 52"	200.00'	94.80'	177.05'	21.33'	171.33'	N 26° 20' 01" W
C3	23+65.00	90° 00' 00" (RT)	19° 05' 55"	300.00'	300.00'	471.24'	124.26'	424.26'	N 44° 01' 39" E
C4	19+74.67	15° 39' 40" (LT)	5° 00' 00"	1,145.92'	157.59'	313.22'	10.79'	312.25'	N 81° 04' 42" E
C5	22+86.45	15° 00' 00" (RT)	5° 00' 00"	1,145.92'	150.86'	300.00'	9.89'	299.14'	N 80° 44' 52" E
C19	3+66.42	46° 56' 50" (RT)	22° 55' 06"	250.00'	108.57'	204.85'	22.56'	199.16'	N 24° 39' 33" E

REV. BY	DATE	DESCRIPTION
MAM	08/16/13	REVISED CL R/W & CONST. 52ND ST.

R:\07000\07122\ODOT PROJECT FILE\LOR 82645\row\sheet\82645RC001.dgn 8/16/2013 9:01:21 AM mcnulty

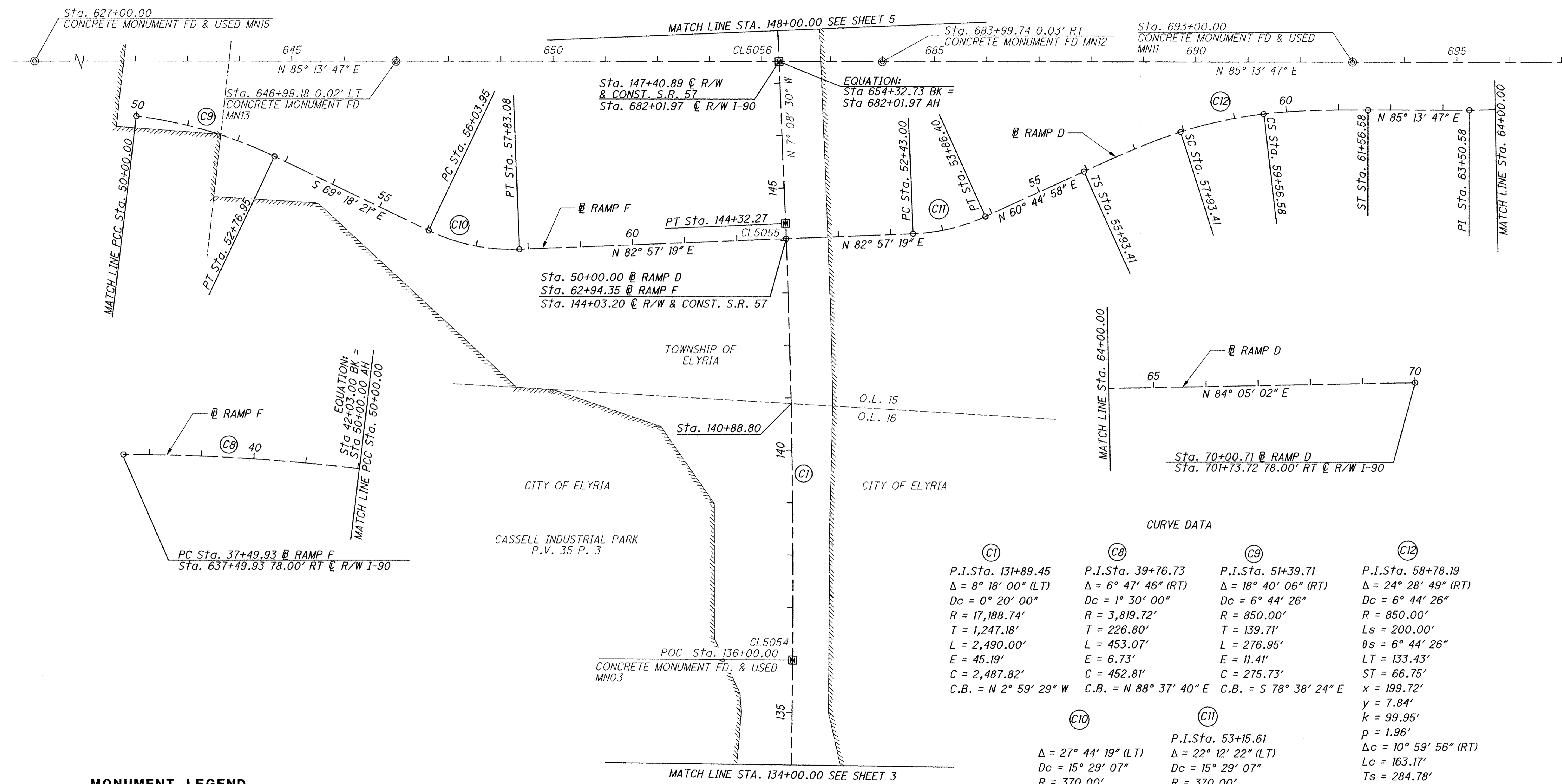
LORAIN COUNTY, CITY OF ELYRIA
 ORIGINAL ELYRIA TOWNSHIP LOT NOS. 29, 30, 31, 32, 33 & 34 WEST OF RIVER TRACT
 AND ORIGINAL ELYRIA TOWNSHIP LOT NOS. 13, 14, 15 & 16 BRACE TRACT
 TOWNSHIP 6 NORTH, RANGE 17 WEST



PID NO. **82645**
 R/W DESIGNER MAM
 R/W REVIEWER TAB

CENTERLINE PLAT

LOR-57-19.42



R:\07000\07122\ODOT PROJECT FILE\LOR\82645\row\sheet\82645R001.dgn 5/16/2013 12:00:52 PM mcnulty

- MONUMENT LEGEND**
- ☐ EXISTING R/W MONUMENT BOX
 - ▣ PROPOSED R/W MONUMENT BOX
 - ⊙ EXISTING CONCRETE MONUMENT
 - I.R.F. IRON PIN FOUND
 - I.R.S. IRON PIN SET W/ ID CAP
 - ⊙ I.R.P. IRON PIPE FOUND
 - P.K.F. P.K. NAIL FOUND
 - ⊙ RAILROAD SPIKE FOUND
 - ⊙ RAILROAD SPIKE SET

CURVE DATA

Curve	P.I. Sta.	Δ	Dc	R	T	L	E	C	C.B.
C1	131+89.45	8° 18' 00" (LT)	0° 20' 00"	17,188.74'	1,247.18'	2,490.00'	45.19'	2,487.82'	N 2° 59' 29" W
C8	39+76.73	6° 47' 46" (RT)	1° 30' 00"	3,819.72'	226.80'	453.07'	6.73'	452.81'	N 88° 37' 40" E
C9	51+39.71	18° 40' 06" (RT)	6° 44' 26"	850.00'	139.71'	276.95'	11.41'	275.73'	S 78° 38' 24" E
C12	58+78.19	24° 28' 49" (RT)	6° 44' 26"	850.00'	200.00'	6° 44' 26"	133.43'	66.75'	x = 199.72' y = 7.84' k = 99.95' p = 1.96'
C10	53+15.61	22° 12' 22" (LT)	15° 29' 07"	370.00'	91.36'	179.13'	11.11'	177.38'	S 83° 10' 31" E
C11	53+15.61	15° 29' 07" (LT)	15° 29' 07"	370.00'	72.61'	143.40'	7.06'	142.50'	N 71° 51' 09" E

LORAIN COUNTY, CITY OF ELYRIA
 ORIGINAL ELYRIA TOWNSHIP LOT NOS. 29, 30, 31, 32, 33 & 34 WEST OF RIVER TRACT
 AND ORIGINAL ELYRIA TOWNSHIP LOT NOS. 13, 14, 15 & 16 BRACE TRACT
 TOWNSHIP 6 NORTH, RANGE 17 WEST

CURVE DATA

(C13)
 P.I. Sta. 57+12.40
 $\Delta = 47^\circ 00' 15''$ (LT)
 $Dc = 8^\circ 00' 00''$
 $R = 716.20'$
 $Ls = 200.00'$
 $\theta s = 8^\circ 00' 00''$
 $LT = 133.47'$
 $ST = 66.79'$
 $x = 199.61'$
 $y = 9.30'$
 $k = 99.94'$
 $p = 2.33'$
 $\Delta c = 31^\circ 00' 15''$ (LT)
 $Lc = 387.55'$
 $Ts = 412.39'$
 $Es = 67.32'$
 $C = 382.84'$
 $C1 = C2 = 199.83'$
 C.B.1 = N 81° 22' 11" E
 C.B. = N 60° 32' 02" E
 C.B.2 = S 39° 41' 53" W

(C14)
 P.I. Sta. 63+26.70
 $\Delta = 45^\circ 50' 13''$ (RT)
 $Dc = 15^\circ 00' 00''$
 $R = 381.97'$
 $Ls = 150.00'$
 $\theta s = 11^\circ 15' 00''$
 $LT = 100.20'$
 $ST = 50.18'$
 $x = 149.42'$
 $y = 9.79'$
 $k = 74.90'$
 $p = 2.45'$
 $\Delta c = 23^\circ 20' 13''$ (RT)
 $Lc = 155.58'$
 $Ts = 237.44'$
 $Es = 35.40'$
 $C = 154.51'$
 $C1 = C2 = 149.74'$
 C.B.1 = N 40° 46' 50" E
 C.B. = N 59° 57' 01" E
 C.B.2 = S 79° 07' 12" W

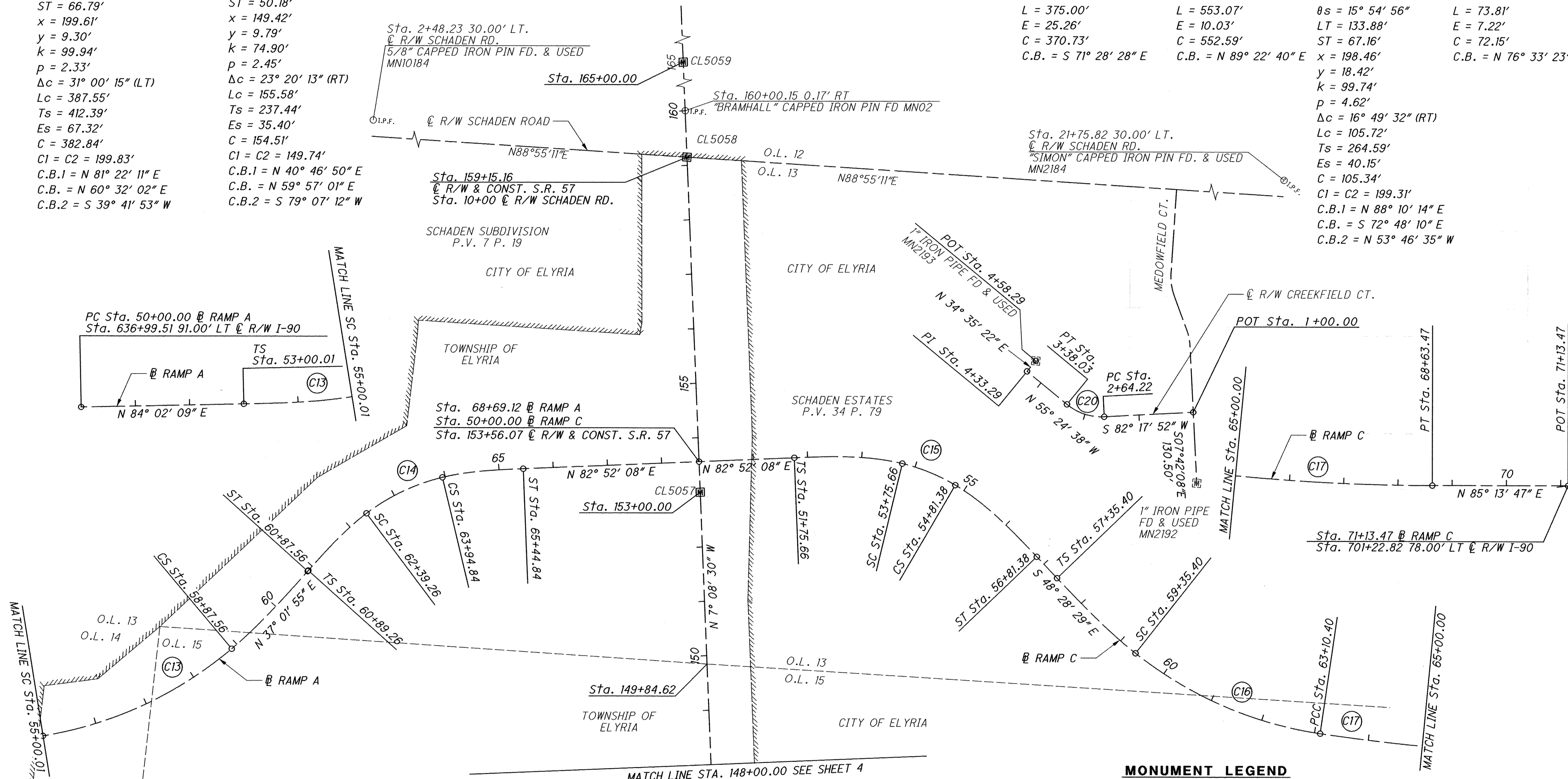
CURVE DATA

(C16)
 P.I. Sta. 61+27.30
 $\Delta = 30^\circ 00' 00''$ (LT)
 $Dc = 8^\circ 00' 00''$
 $R = 716.20'$
 $L = 375.00'$
 $T = 191.90'$
 $E = 25.26'$
 $C = 370.73'$
 C.B. = S 71° 28' 28" E

(C17)
 P.I. Sta. 65+87.42
 $\Delta = 8^\circ 17' 46''$ (LT)
 $Dc = 1^\circ 30' 00''$
 $R = 3,819.72'$
 $L = 553.07'$
 $T = 277.02'$
 $E = 10.03'$
 $C = 552.59'$
 C.B. = N 89° 22' 40" E

(C15)
 P.I. Sta. 54+40.26
 $\Delta = 48^\circ 39' 24''$ (RT)
 $Dc = 15^\circ 54' 56''$
 $R = 360.00'$
 $Ls = 200.00'$
 $\theta s = 15^\circ 54' 56''$
 $LT = 133.88'$
 $ST = 67.16'$
 $x = 198.46'$
 $y = 18.42'$
 $k = 99.74'$
 $p = 4.62'$
 $\Delta c = 16^\circ 49' 32''$ (RT)
 $Lc = 105.72'$
 $Ts = 264.59'$
 $Es = 40.15'$
 $C = 105.34'$
 $C1 = C2 = 199.31'$
 C.B.1 = N 88° 10' 14" E
 C.B. = S 72° 48' 10" E
 C.B.2 = N 53° 46' 35" W

(C20)
 P.I. Sta. 3+02.90
 $\Delta = 42^\circ 17' 30''$ (RT)
 $Dc = 57^\circ 17' 45''$
 $R = 100.00'$
 $T = 38.68'$
 $L = 73.81'$
 $E = 7.22'$
 $C = 72.15'$
 C.B. = N 76° 33' 23" W



MONUMENT LEGEND

- EXISTING R/W MONUMENT BOX
- PROPOSED R/W MONUMENT BOX
- EXISTING CONCRETE MONUMENT
- IRON PIN FOUND
- IRON PIN SET W/ ID CAP
- IRON PIPE FOUND
- P.K. NAIL FOUND
- RAILROAD SPIKE FOUND
- RAILROAD SPIKE SET

R:\07000\07122\ODOT PROJECT FILE\LOR\82645\row\sheet\82645RCC001.dgn 5/16/2013 12:00:53 PM mcnulty

CENTERLINE PLAT

LOR-57-19.42

4/10

5/83

863
941

PID NO. 82645

R/W DESIGNER MAM
R/W REVIEWER TAB

LORAIN COUNTY, CITY OF ELYRIA
 ORIGINAL ELYRIA TOWNSHIP LOT NOS. 29, 30, 31, 32, 33 & 34 WEST OF RIVER TRACT
 AND ORIGINAL ELYRIA TOWNSHIP LOT NOS. 13, 14, 15 & 16 BRACE TRACT, TOWNSHIP 6 NORTH, RANGE 17 WEST

DATA PROVIDED BY ODOT

PROJECT GROUND COORDINATES - US SURVEY FEET							PRIMARY CONTROL POINTS	STATE PLANE GRID COORDINATES				
PROJECT COORDINATES (FEET) ARE RELATIVE TO STATE PLANE GRID COORDINATES (METERS)								HORIZONTAL DATUM - NAD83(COR96) OHIO NORTH ZONE (3401) FROM CORS				
BY A PROJECT ADJUSTMENT FACTOR (PAF) MULTIPLIER OF : 3.281087292												
C/L OF RIGHT OF WAY SR 57 (LOR-57-16.94 & 17.76 (1959) USED FOR ALIGNMENT)												
NAME	STATION	OFFSET (ft)	RT/LT	NORTH (ft)	EAST (ft)	FEATURE	DESCRIPTION	NAME	NORTH (m)	EAST (m)	COMMENTS	
CP1	151+51.11	249.46	RT	633910.3204	2073910.8728	IPINS	3/4" IRON REBAR W/3" DIA. ALUMINUM ODOT CAP	CP1	193201.2970	632080.3710		
CP2	104+01.95	-143.58	LT	629144.5116	2073707.8457	IPINS	3/4" IRON REBAR W/3" DIA. ALUMINUM ODOT CAP	CP2	191748.7880	632018.4930		
CP3	107+04.25	-6.31	LT	629443.9698	2073851.2062	GOVCON	3" DISK IN CONC. - LOR Co. AUDITOR "DES-2003"	CP3	191840.0560	632062.1860		
CP4	120+97.50	-5.05	LT	630836.8833	2073879.9289	GOVCON	3" DISK IN CONC. - LOR Co. AUDITOR "DES-2003-39"	CP4	192264.5840	632070.9400		
CP5	131+66.47	60.63	RT	631908.5028	2073924.2564	IPIN	5/8" IRON REBAR W/YELLOW "ODOT CONTROL" CAP	CP5	192591.1890	632084.4500		
CP6	145+65.11	-113.73	LT	633283.7180	2073623.3544	IPINS	5/8" IRON REBAR W/YELLOW "ODOT CONTROL" CAP	CP6	193010.3230	631992.7420		
CP7	159+23.94	-77.21	LT	634636.5366	2073490.6508	IPIN	5/8" IRON REBAR W/YELLOW "ODOT CONTROL" CAP	CP7	193422.6310	631952.2970		
C/L OF RIGHT OF WAY GRISWOLD ROAD ESTABLISHED BY KS ASSOC.												
CP8	40+69.42	-41.94	LT	631965.2525	2072930.7464	IPINS	5/8" IRON REBAR W/YELLOW "ODOT CONTROL" CAP	CP8	192608.4850	631781.6510		
C/L OF RIGHT OF WAY LEONA STREET ESTABLISHED BY KS ASSOC.												
CP9	8+05.96	57.22	RT	631318.5764	2073018.6041	RSPKS	SURVEY MARKER SPIKE	CP9	192411.3930	631808.4280		
OUTSIDE PROJECT AREA												
CP10			RT	631253.8045	2076523.2844	RSPKS	SURVEY MARKER SPIKE	CP10	192391.6520	632876.5740		
CP11			RT	632085.2943	2076293.1886	IPINS	5/8" IRON REBAR W/YELLOW "ODOT CONTROL" CAP	CP11	192645.0710	632806.4400		
EXISTING MONUMENTATION CENTERLINE OF RIGHT OF WAY STATE ROUTE 57							SR 57 MONUMENTATION					
MN01	132+00.13	-0.25	LT	631939.0100	2073861.7100	IPIN	5/8" IRON REBAR FND @ C/L GRISWOLD & SR 57	MN01	192600.4869	632065.3873	TO BE RESET AFTER CONSTRUCTION	
MN02	160+00.15	0.17	RT	634721.7792	2073557.9590	IPIN	5/8" IRON REBAR FND W/CAP "BRAMALL #8073"	MN02	193448.6110	631972.8110	TO BE REMOVED	
MN03	136+00.00	0.00		632338.0496	2073836.1530	CMON	CONC. MON. - BROKEN, SHOT CENTER - 26" DEEP	MN03	192722.1050	632057.5981	TO BE RESET AFTER CONSTRUCTION	
MN04	125+53.45	-0.24	LT	631292.7510	2073883.7940	CMON	CONC. MON. - BROKEN, SHOT CENTER - 32" DEEP	MN04	192403.5220	632072.1180	TO BE REMOVED	
MN05	110+00.71	0.00	RT	629740.2455	2073863.5100	CMON	CONC. MON. - BROKEN, SHOT CENTER - 4" DEEP	MN05	191930.3540	632065.9359	TO BE RESET AFTER CONSTRUCTION	
ALIGNMENT CENTERLINE OF RIGHT OF WAY STATE ROUTE 57							SR 57 ALIGNMENT					
CL5701	PI 51+82.70	0.00		623923.4247	2073745.8833	CALPT	PI (CALCULATED)	CL5701	190157.5207	632030.0860		
MN05	110+00.71	0.00		629740.2455	2073863.5100	CMON	CONC. MON. - BROKEN, SHOT CENTER - 4" DEEP	MN05	191930.3540	632065.9359		
CL5703	PC 119+42.27	0.00		630681.6130	2073882.5462	CALPT	PC (CALCULATED)	CL5703	192217.2612	632071.7377		
MN03	136+00.00	0.00		632338.0496	2073836.1530	CMON	CONC. MON. - BROKEN, SHOT CENTER - 26" DEEP	MN03	192722.1050	632057.5981		
CL5704	PT 144+32.27	0.00		633166.0470	2073752.7106	CALPT	PT (CALCULATED)	CL5704	192974.4596	632032.1668		
CALC11	147+40.89	0.00		633472.2719	2073714.3428	CALPT	INTERSECTION C/L R/W SR 57/I-90	CALC11	193067.7899	632020.4732		
CL5706	POT 184+32.27	0.00		637135.0109	2073255.4278	CALPT	POT (CALCULATED)	CL5706	194184.1086	631880.6064		
EXISTING MONUMENTATION CENTERLINE OF RIGHT OF WAY I-90							I-90 MONUMENTATION					
C/L OF RIGHT OF WAY I-90 (LOR-254-4.08B(1965) WEST OF SR 57) (LOR-90-13.01(1966) EAST OF SR 57)												
NAME	STATION	OFFSET (ft)	RT/LT	NORTH (ft)	EAST (ft)	FEATURE	DESCRIPTION	NAME	NORTH (m)	EAST (m)	COMMENTS	
MN10	701+74.12	0.00		633636.2807	2075679.6610	CMON	CONCRETE MONUMENT - GOOD CONDITION	MN10	193117.7760	632619.4570	OUTSIDE CONSTRUCTION LIMITS	
MN11	693+00.00	0.00		633563.5849	2074808.5720	CMON	CONCRETE MONUMENT - GOOD CONDITION	MN11	193095.6200	632353.9691	OUTSIDE CONSTRUCTION LIMITS	
MN12	683+99.74	0.03	RT	633488.6843	2073911.4270	CMON	CONCRETE MONUMENT - GOOD CONDITION	MN12	193072.7920	632080.5399	OUTSIDE CONSTRUCTION LIMITS	
MN13	646+99.18	-0.02	LT	633411.2867	2072983.3360	CMON	CONCRETE MONUMENT - GOOD CONDITION	MN13	193049.2030	631797.6791	OUTSIDE CONSTRUCTION LIMITS	
MN14	636+99.66	-0.11	LT	633328.2588	2071987.2700	CMON	CONCRETE MONUMENT - GOOD CONDITION	MN14	193023.8980	631494.1011	OUTSIDE CONSTRUCTION LIMITS	
MN15	627+00.00	0.00		633245.0110	2070991.0790	CMON	CONCRETE MONUMENT - GOOD CONDITION	MN15	192998.5260	631190.4849	OUTSIDE CONSTRUCTION LIMITS	
MN16	616+98.36	-0.48	LT	633162.1898	2069992.8670	CMON	CONCRETE MONUMENT - GOOD CONDITION	MN16	192973.2840	630886.2529	OUTSIDE CONSTRUCTION LIMITS	
MN20	607+60.38	80.37	RT	633003.6214	2069064.8580	GOVCON	CONC. MON. W/DISK "I-90 - SLM 11.51" RT"	MN20	192924.9560	630603.4170	OUTSIDE CONSTRUCTION LIMITS	
MN21	616+43.54	80.78	RT	633076.6552	2069944.9930	GOVCON	CONC. MON. W/DISK "I-90 - SLM 11.67" RT"	MN21	192947.2150	630871.6620	OUTSIDE CONSTRUCTION LIMITS	
MN22	624+25.99	81.05	RT	633141.4501	2070724.7570	GOVCON	CONC. MON. W/DISK "I-90 - SLM 11.82" RT"	MN22	192966.9630	631109.3161	OUTSIDE CONSTRUCTION LIMITS	
MN23	633+49.74	82.39	RT	633216.9381	2071645.4170	GOVCON	CONC. MON. W/DISK "I-90 - SLM 11.99" RT"	MN23	192989.9700	631389.9121	OUTSIDE CONSTRUCTION LIMITS	
MN24	641+07.82	118.70	RT	633243.7970	2072403.8920	GOVCON	CONC. MON. W/DISK "I-90 - SLM 12.14" RT"	MN24	192998.1560	631621.0779	OUTSIDE CONSTRUCTION LIMITS	
MN25	OUT	OUT	RT	633573.5758	2076131.7000	GOVCON	CONC. MON. W/DISK "I-90 - SLM 13.37" RT"	MN25	193098.6650	632757.2281	OUTSIDE CONSTRUCTION LIMITS	
ALIGNMENT CENTERLINE OF RIGHT OF WAY I-90							I-90 ALIGNMENT					
CL9001	POT 607+00.00	0.00		633078.6870	2068998.0069	CALPT	POT (CALCULATED)	CL9001	192947.8343	630583.0424		
MN15	627+00.00	0.00		633245.0110	2070991.0790	CMON	CONCRETE MONUMENT - GOOD CONDITION	MN15	192998.5260	631190.4849		
CALC11	654+32.73	0.00		633472.2719	2073714.3428	CALPT	INTERSECTION C/L R/W SR 57/I-90	CALC11	193067.7899	632020.4732		
MN11	693+00.00	0.00		633563.5849	2074808.5720	CMON	CONCRETE MONUMENT - GOOD CONDITION	MN11	193095.6200	632353.9691		
CL9005	TS 701+74.12	0.00		633636.2783	2075679.6615	CALPT	TS (CALCULATED)	CL9005	193117.7753	632619.4571		

PROJECT ADJ. FACTOR = 3.281087292 (Metric Grid to Project Ground Feet)
 ENG./METRIC CONV. = 3.280833333

State Plane Grid Coordinates derived through a series of Static, Rapid Static, & VRS GPS observations. Points having prefix 'CP' are project control points. Point CP01 (Project Base Point) located by means of averaging multiple 2+ hour Static GPS sessions, solved through the National Geodetic Survey's Online Positioning User Service (OPUS). Subsequent control points positioned by overlapping Rapid Static GPS observations with Static base sessions and through TGO software radiating vectors from CP01 to all control points. Grid values multiplied by the PAF to obtain ground values in feet. Points with prefix 'MN' are centerline & reference monuments located. Points with 'CL' & 'CALC' prefix are calculated points along the centerline.
 \\ksa7\projects\07000\07122\ODOT PROJECT FILE\LOR\82645\survey\spreadsheets\IDGN Tables\82645 ODOT DATA dgn table.xlsm\MONUMENT TABLE

HORIZONTAL SCALE IN FEET

PID NO. 82645

R/W DESIGNER MAM
R/W REVIEWER TAB

CENTERLINE PLAT

LOR-57-19.42

5/10
6/83

864
941

R:\07000\07122\ODOT PROJECT FILE\LOR\82645\row\sheet\82645R001.dgn 5/16/2013 12:00:53 PM mcnulty

LORAIN COUNTY, CITY OF ELYRIA
ORIGINAL ELYRIA TOWNSHIP LOT NOS. 29, 30, 31, 32, 33 & 34 WEST OF RIVER TRACT
AND ORIGINAL ELYIRA TOWNSHIP LOT NOS. 13, 14, 15 & 16 BRACE TRACT TOWNSHIP 6 NORTH, RANGE 17 WEST

LOR-57-19.42

PID: 82645

PROJECT GROUND COORDINATES - US SURVEY FEET								STATE PLANE GRID COORDINATES			MONUMENT TO BE SET DURING CONSTRUCTION			
PROJECT COORDINATES (FEET) ARE RELATIVE TO STATE PLANE GRID COORDINATES (METERS)								HORIZONTAL DATUM - NAD83(COR96) OHIO NORTH ZONE (3401) FROM CORS			MONUMENT ASSEMBLY		RIGHT OF WAY MONUMENTS TO BE RESET	
BY A PROJECT ADJUSTMENT FACTOR (PAF) MULTIPLIER OF : 3.281087292														
C/L OF RIGHT OF WAY SR 57								PROPOSED RIGHT OF WAY MONUMENTS						
NAME	STATION	OFFSET (ft)	RT/LT	NORTH (ft)	EAST (ft)	FEATURE	DESCRIPTION	NAME	NORTH (m)	EAST (m)	ITEM 604 TYPE C	ITEM 604 TYPE B		
CL5078	105+00.00	0.00		629239.6378	2073853.3868	CALPT	MONUMENT ASSEMBLY ITEM 604 TYPE C	CL5078	191777.7803	632062.8506	1			
CL5077	110+00.00	0.00		629739.5356	2073863.4956	CALPT	MONUMENT ASSEMBLY ITEM 604 TYPE C	CL5077	191930.1376	632065.9315	1			
CL5049	118+63.42	0.00		630602.7830	2073880.9520	CALPT	MONUMENT ASSEMBLY ITEM 604 TYPE C	CL5049	192193.2356	632071.2518	1			
CL5050	119+42.28	0.00		630681.6200	2073882.5460	CALPT	MONUMENT ASSEMBLY ITEM 604 TYPE C	CL5050	192217.2633	632071.7376	1			
CL5051	125+37.44	0.00		631276.7510	2073884.2760	CALPT	MONUMENT ASSEMBLY ITEM 604 TYPE C	CL5051	192398.6456	632072.2649	1			
CL5052	127+89.98	0.00		631529.2310	2073878.7830	CALPT	MONUMENT ASSEMBLY ITEM 604 TYPE C	CL5052	192475.5957	632070.5907	1			
CL5053	132+00.81	0.00		631939.7050	2073861.9240	CALPT	MONUMENT ASSEMBLY ITEM 604 TYPE C	CL5053	192600.6987	632065.4525	1			
CL5054	136+00.00	0.00		632338.0510	2073836.1500	CALPT	MONUMENT ASSEMBLY ITEM 604 TYPE C	CL5054	192722.1054	632057.5972	1			
CL5055	144+32.27	0.00		633166.0470	2073752.7110	CALPT	MONUMENT ASSEMBLY ITEM 604 TYPE C	CL5055	192974.4596	632032.1669	1			
CL5056	147+40.89	0.00		633472.2700	2073714.3430	CALPT	MONUMENT ASSEMBLY ITEM 604 TYPE C	CL5056	193067.7893	632020.4732	1			
CL5057	153+00.00	0.00		634027.0440	2073644.8340	CALPT	MONUMENT ASSEMBLY ITEM 604 TYPE C	CL5057	193236.8717	631999.2885	1			
CL5058	159+15.16	0.00		634637.4330	2073568.3560	CALPT	MONUMENT ASSEMBLY ITEM 604 TYPE C	CL5058	193422.9042	631975.9797	1			
CL5059	165+00.00	0.00		635217.7350	2073495.6490	CALPT	MONUMENT ASSEMBLY ITEM 604 TYPE C	CL5059	193599.7669	631953.8203	1			
RP5087	103+00.00	171.04	RT	629036.2207	2074020.3490	CALPT	RIGHT OF WAY MONUMENT ITEM 604 TYPE B	RP5087	191715.7834	632113.7368				
RP5086	104+28.00	129.00	RT	629165.0440	2073980.9050	CALPT	RIGHT OF WAY MONUMENT ITEM 604 TYPE B	RP5086	191755.0458	632101.7152				
RP5085	105+53.70	107.00	RT	629291.1640	2073961.4510	CALPT	RIGHT OF WAY MONUMENT ITEM 604 TYPE B	RP5085	191793.4843	632095.7861				
RP5048	105+62.38	-207.00	LT	629306.1885	2073647.6902	CALPT	RIGHT OF WAY MONUMENT ITEM 604 TYPE B	RP5048	191798.0634	632000.1590				
RP5083	106+46.00	-195.00	LT	629389.5489	2073661.3784	CALPT	RIGHT OF WAY MONUMENT ITEM 604 TYPE B	RP5083	191823.4697	632004.3308				
RP5047	107+40.00	-168.00	LT	629482.9869	2073690.2734	CALPT	RIGHT OF WAY MONUMENT ITEM 604 TYPE B	RP5047	191851.9475	632013.1374				
RP5084	110+61.00	-129.50	LT	629803.1413	2073735.2554	CALPT	RIGHT OF WAY MONUMENT ITEM 604 TYPE B	RP5084	191949.5232	632026.8468				
RP5046	111+58.50	-125.00	LT	629900.5305	2073741.7257	CALPT	RIGHT OF WAY MONUMENT ITEM 604 TYPE B	RP5046	191979.2052	632028.8188				
RP5032	116+09.26	160.00	RT	630399.5022	2074055.8957	CALPT	RIGHT OF WAY MONUMENT ITEM 604 TYPE B	RP5032	192131.2803	632124.5706		1		
RP5031	116+63.72	179.02	RT	630345.4354	2074035.7808	CALPT	RIGHT OF WAY MONUMENT ITEM 604 TYPE B	RP5031	192114.8020	632118.4401				
RP5076	119+43.79	160.00	RT	630679.9079	2074042.5444	CALPT	RIGHT OF WAY MONUMENT ITEM 604 TYPE B	RP5076	192216.7415	632120.5015				
RP5070	155+93.29	-100.00	LT	634305.6270	2073509.1480	CALPT	RIGHT OF WAY MONUMENT ITEM 604 TYPE B	RP5070	193321.7774	631957.9345				
RP5071	158+76.72	-100.00	LT	634586.8590	2073473.9110	CALPT	RIGHT OF WAY MONUMENT ITEM 604 TYPE B	RP5071	193407.4904	631947.1951				
C/L OF RIGHT OF WAY MIDWAY MALL FRONTAGE ROAD														
CL5060	30+00.00	0.00		631102.9450	2074820.8110	CALPT	MONUMENT ASSEMBLY ITEM 604 TYPE C	CL5060	192345.6735	632357.6992	1			
RP5033	17+23.92	-25.00	LT	630456.5810	2074133.0490	CALPT	RIGHT OF WAY MONUMENT ITEM 604 TYPE B	RP5033	192148.6766	632148.0852		1		
RP5034	17+23.92	25.00	RT	630495.8170	2074164.0410	CALPT	RIGHT OF WAY MONUMENT ITEM 604 TYPE B	RP5034	192160.6348	632157.5308		1		
RP5035	17+33.71	25.00	RT	630501.8810	2074156.3650	CALPT	RIGHT OF WAY MONUMENT ITEM 604 TYPE B	RP5035	192162.4830	632155.1914		1		
RP5036	19+10.76	25.00	RT	630636.2370	2074089.8630	CALPT	RIGHT OF WAY MONUMENT ITEM 604 TYPE B	RP5036	192203.4316	632134.9231		1		
RP5037	20+65.00	25.00	RT	630790.4500	2074087.2460	CALPT	RIGHT OF WAY MONUMENT ITEM 604 TYPE B	RP5037	192250.4322	632134.1255		1		
RP5027	20+93.70	-25.00	LT	630820.6650	2074038.2120	CALPT	RIGHT OF WAY MONUMENT ITEM 604 TYPE B	RP5027	192259.6410	632119.1810		1		
RP5090	21+38.67	-25.00	LT	630868.7670	2074045.6610	CALPT	RIGHT OF WAY MONUMENT ITEM 604 TYPE B	RP5090	192274.3014	632121.4513		1		
RP5091	21+39.74	-20.33	LT	630868.8230	2074050.4700	CALPT	RIGHT OF WAY MONUMENT ITEM 604 TYPE B	RP5091	192274.3185	632122.9170		1		
RP5093	21+44.39	-25.00	LT	630874.7850	2074047.1220	CALPT	RIGHT OF WAY MONUMENT ITEM 604 TYPE B	RP5093	192276.1356	632121.8966		1		
RP5092	21+45.17	-21.83	LT	630874.8230	2074050.4000	CALPT	RIGHT OF WAY MONUMENT ITEM 604 TYPE B	RP5092	192276.1472	632122.8957		1		
RP5026	25+36.24	-25.00	LT	631120.0700	2074356.6900	CALPT	RIGHT OF WAY MONUMENT ITEM 604 TYPE B	RP5026	192350.8928	632216.2458		1		
RP5038	25+36.24	25.00	RT	631070.0770	2074357.5390	CALPT	RIGHT OF WAY MONUMENT ITEM 604 TYPE B	RP5038	192335.6561	632216.5046		1		
RP5025	29+37.95	-25.00	LT	631126.8880	2074758.3420	CALPT	RIGHT OF WAY MONUMENT ITEM 604 TYPE B	RP5025	192352.9708	632338.6601		1		
RP5039	29+37.95	25.00	RT	631076.8960	2074759.1930	CALPT	RIGHT OF WAY MONUMENT ITEM 604 TYPE B	RP5039	192337.7344	632338.9195		1		
C/L OF RIGHT OF WAY GRISWOLD ROAD														
CL5082	41+04.96	0.00		631923.9481	2072967.0153	CALPT	MAG NAIL SET	CL5082	192595.8964	631792.7049				
RP5002	41+72.00	-30.00	LT	631955.1240	2073033.5200	CALPT	RIGHT OF WAY MONUMENT ITEM 604 TYPE B	RP5002	192605.3981	631812.9740				
RP5003	41+72.00	-35.00	LT	631960.1230	2073033.4320	CALPT	RIGHT OF WAY MONUMENT ITEM 604 TYPE B	RP5003	192606.9217	631812.9472				
RP5004	43+87.77	-35.00	LT	631963.9210	2073249.1660	CALPT	RIGHT OF WAY MONUMENT ITEM 604 TYPE B	RP5004	192608.0792	631878.6980		1		
RP5005	45+28.74	-35.00	LT	631966.4030	2073390.1180	CALPT	RIGHT OF WAY MONUMENT ITEM 604 TYPE B	RP5005	192608.8357	631921.6569		1		
RP5006	55+12.50	-35.00	LT	631990.3950	2074373.1100	CALPT	RIGHT OF WAY MONUMENT ITEM 604 TYPE B	RP5006	192616.1479	632221.2503		1		
RP5007	56+24.57	-35.00	LT	631993.8290	2074485.1250	CALPT	RIGHT OF WAY MONUMENT ITEM 604 TYPE B	RP5007	192617.1945	632255.3899		1		
RP5008	56+69.61	-35.00	LT	631995.2100	2074530.1390	CALPT	RIGHT OF WAY MONUMENT ITEM 604 TYPE B	RP5008	192617.6154	632269.1091		1		
RP5009	57+94.68	-35.00	LT	631999.0430	2074655.1570	CALPT	RIGHT OF WAY MONUMENT ITEM 604 TYPE B	RP5009	192618.7836	632307.2117		1		
RP5010	58+63.00	-35.00	LT	632001.1360	2074723.4420	CALPT	RIGHT OF WAY MONUMENT ITEM 604 TYPE B	RP5010	192619.4215	632328.0234		1		
RP5011	58+63.00	-40.00	LT	632006.1340	2074723.2880	CALPT	RIGHT OF WAY MONUMENT ITEM 604 TYPE B	RP5011	192620.9447	632327.9765		1		
RP5012	59+59.69	-40.00	LT	632009.0970	2074819.9300	CALPT	RIGHT OF WAY MONUMENT ITEM 604 TYPE B	RP5012	192621.8478	632357.4307		1		
RP5013	58+52.88	30.00	RT	631935.8570	2074715.3220	CALPT	RIGHT OF WAY MONUMENT ITEM 604 TYPE B	RP5013	192599.5259	632325.5486		1		
RP5016	60+02.88	30.00	RT	631940.4540	2074865.2523	CALPT	RIGHT OF WAY MONUMENT ITEM 604 TYPE B	RP5016	192600.9270	632371.2439				
PROJECT ADJ. FACTOR = 3.281087292 (Metric Grid to Project Ground Feet)											SUB-TOTAL MONUMENTS TO BE SET			
ENG./METRIC CONV. = 3.280833333											14			
Points with prefix 'RP' are proposed right of way monuments. Points with 'CL' prefix are proposed centerline monuments.														

QUANTITY CARRIED TO GENERAL SUMMARY

TOTAL MONUMENTS TO BE SET DURING CONSTRUCTION SHEETS 7 & 8	
MONUMENT ASSEMBLY	
ITEM 623 TYPE C	24
TOTAL MONUMENTS TO BE RESET AFTER CONSTRUCTION SHEETS 7 & 8	
RIGHT OF WAY MONUMENT	
ITEM 623 TYPE B	37

HORIZONTAL SCALE IN FEET
 P.D. NO. 82645
 R/W DESIGNER MAM
 R/W REVIEWER TAB
 CENTERLINE PLAT
 LOR-57-19.42
 6/10
 7/83
 (865)
 941

SETTING OF ALL MONUMENTS SHALL BE PERFORMED BY A SURVEYOR REGISTERED IN THE STATE OF OHIO. THE MONUMENT ASSEMBLIES AND REFERENCE MONUMENTS WILL BE INSTALLED BY THE CONTRACTOR AT THE TIME OF CONSTRUCTION. THE IRON PIN AND CAP (WHEN REQUIRED) ARE TO BE INSTALLED BY THE CONTRACTOR'S SURVEYOR.

CHANGES OR ALTERATIONS TO THE LOCATION OF ANY MONUMENTS SHOWN IN THIS TABLE, REQUIRE PRIOR APPROVAL FROM THE DISTRICT REAL ESTATE ADMINISTRATOR OF THE OHIO DEPARTMENT OF TRANSPORTATION. IN THE EVENT THAT CHANGES OR ALTERATIONS ARE APPROVED, A REVISED CENTERLINE PLAT WITH THE NEW LOCATIONS SHALL BE RECORDED IN THE APPLICABLE COUNTY RECORDS AND THE OHIO DEPARTMENT OF TRANSPORTATION. SPECIFICATIONS FOR MONUMENT ASSEMBLIES, REFERENCE MONUMENTS AND RIGHT OF WAY MONUMENTS ARE SHOWN ON STANDARD CONSTRUCTION DRAWING RM-1.1.

MAM	9/25/13	REVISED QUANTITY TABLE
MAM	08/16/13	REVISED QUANTITY TABLE
REV. BY	DATE	DESCRIPTION
DATE COMPLETED		

R:\07000\07122\000T PROJECT FILE\LOR-82645\row\sheet\82645RC001.dgn 9/25/2013 11:29:33 AM mcnulty

LORAIN COUNTY, CITY OF ELYRIA
ORIGINAL ELYRIA TOWNSHIP LOT NOS. 29, 30, 31, 32, 33 & 34 WEST OF RIVER TRACT
AND ORIGINAL ELYIRA TOWNSHIP LOT NOS. 13, 14, 15 & 16 BRACE TRACT
TOWNSHIP 6 NORTH, RANGE 17 WEST

HORIZONTAL SCALE IN FEET

PID NO. **82645**
R/W DESIGNER MAM
R/W REVIEWER TAB

CENTERLINE PLAT

LOR-57-19.42

7/10
8/83
866
941

PROJECT GROUND COORDINATES - US SURVEY FEET								STATE PLANE GRID COORDINATES			MONUMENT TO BE SET DURING CONSTRUCTION			
PROJECT COORDINATES (FEET) ARE RELATIVE TO STATE PLANE GRID COORDINATES (METERS)														
BY A PROJECT ADJUSTMENT FACTOR (PAF) MULTIPLIER OF :								3.281087292						
C/L OF CONST. MIDWAY BOULEVARD								HORIZONTAL DATUM - NAD83(COR96) OHIO NORTH ZONE (3401) FROM CORS			MONUMENT ASSEMBLY		RIGHT OF WAY MONUMENTS TO BE RESET	
NAME	STATION	OFFSET (ft)	RT/LT	NORTH (ft)	EAST (ft)	FEATURE	DESCRIPTION				NAME	NORTH (m)	EAST (m)	ITEM 604 TYPE C
CL5061	7+02.47	0.00		631263.0490	2073587.3160	CALPT	MONUMENT ASSEMBLY ITEM 604 TYPE C	CL5061	192394.4695	631981.7583	1			
CL5062	13+52.47	0.00		631293.0090	2074236.6250	CALPT	MONUMENT ASSEMBLY ITEM 604 TYPE C	CL5062	192403.6006	632179.6528	1			
CL5063	19+30.63	0.00		631302.8220	2074814.6980	CALPT	MONUMENT ASSEMBLY ITEM 604 TYPE C	CL5063	192406.5914	632355.8361	1			
RP5021	13+23.29	38.00	RT	631253.7040	2074209.2300	CALPT	RIGHT OF WAY MONUMENT ITEM 604 TYPE B	RP5021	192391.6214	632171.3034		1		
RP5022	13+73.00	35.00	RT	631258.3620	2074257.7460	CALPT	RIGHT OF WAY MONUMENT ITEM 604 TYPE B	RP5022	192393.0410	632186.0900		1		
RP5018	18+66.71	-30.00	LT	631331.7324	2074750.2864	CALPT	RIGHT OF WAY MONUMENT ITEM 604 TYPE B	RP5018	192415.4026	632336.2050		1		
RP5023	18+56.00	35.00	RT	631266.5600	2074740.6760	CALPT	RIGHT OF WAY MONUMENT ITEM 604 TYPE B	RP5023	192395.5396	632333.2759		1		
RP5024	18+71.29	50.00	RT	631251.8220	2074756.2170	CALPT	RIGHT OF WAY MONUMENT ITEM 604 TYPE B	RP5024	192391.0478	632338.0125		1		
RP5041	19+69.29	47.12	RT	631256.3650	2074854.1540	CALPT	RIGHT OF WAY MONUMENT ITEM 604 TYPE B	RP5041	192392.4324	632367.8614		1		
RP5042	19+91.12	30.00	RT	631273.8530	2074875.6890	CALPT	RIGHT OF WAY MONUMENT ITEM 604 TYPE B	RP5042	192397.7623	632374.4248		1		
RP5020	19-88.72	-30.00	LT	631333.8032	2074872.2758	CALPT	RIGHT OF WAY MONUMENT ITEM 604 TYPE B	RP5020	192416.0338	632373.3845		1		
C/L OF RIGHT OF WAY TILLOTSON STREET														
RP5040	4+43.89	35.60	RT	631078.5590	2074857.1790	CALPT	RIGHT OF WAY MONUMENT ITEM 604 TYPE B	RP5040	192338.2412	632368.7834		1		
RP5019	7+22.38	35.00	RT	631356.8934	2074848.0607	CALPT	RIGHT OF WAY MONUMENT ITEM 604 TYPE B	RP5019	192423.0711	632366.0043		1		
RP5017	7+23.40	-40.00	LT	631355.6203	2074773.0646	CALPT	RIGHT OF WAY MONUMENT ITEM 604 TYPE B	RP5017	192422.6831	632343.1472		1		
RP5014	12+65.12	-40.00	LT	631897.0950	2074756.5290	CALPT	RIGHT OF WAY MONUMENT ITEM 604 TYPE B	RP5014	192587.7122	632338.1076		1		
RP5015	12+70.15	35.00	RT	631904.4039	2074831.3412	CALPT	RIGHT OF WAY MONUMENT ITEM 604 TYPE B	RP5015	192589.9398	632360.9086		1		
C/L OF RIGHT OF WAY RELOCATED 49TH STREET														
CL5079	17+24.38	0.00		631533.5030	2074103.1290	CALPT	MONUMENT ASSEMBLY ITEM 604 TYPE C	CL5079	192476.8977	632138.9662	1			
CL5064	18+17.07	0.00		631535.2680	2074195.8010	CALPT	MONUMENT ASSEMBLY ITEM 604 TYPE C	CL5064	192477.4356	632167.2105	1			
CL5065	21+30.30	0.00		631583.6920	2074504.2720	CALPT	MONUMENT ASSEMBLY ITEM 604 TYPE C	CL5065	192492.1941	632261.2254	1			
CL5066	21+35.59	0.00		631585.2170	2074509.3380	CALPT	MONUMENT ASSEMBLY ITEM 604 TYPE C	CL5066	192492.6589	632262.7694	1			
C/L OF RIGHT OF WAY LEONA STREET														
CL5067	0+76.22	0.00		630588.0370	2072972.6870	CALPT	MONUMENT ASSEMBLY ITEM 604 TYPE C	CL5067	192188.7414	631794.4335	1			
CL5068	7+41.17	0.00		631252.9030	2072962.3980	CALPT	MONUMENT ASSEMBLY ITEM 604 TYPE C	CL5068	192391.3772	631791.2977	1			
CL5069	10+76.00	0.00		631587.6950	2072957.2170	CALPT	MONUMENT ASSEMBLY ITEM 604 TYPE C	CL5069	192493.4142	631789.7186	1			
RP5001	7+16.15	-25.00	LT	631227.5000	2072937.7880	CALPT	RIGHT OF WAY MONUMENT ITEM 604 TYPE B	RP5001	192383.6350	631783.7971		1		
RP5000	7+31.14	-40.00	LT	631242.2550	2072922.5580	CALPT	RIGHT OF WAY MONUMENT ITEM 604 TYPE B	RP5000	192388.1320	631779.1553		1		
C/L OF RIGHT OF WAY 52ND STREET														
RP5077	59+14.03	25.00	RT	630576.3905	2073795.4010	CALPT	RIGHT OF WAY MONUMENT ITEM 604 TYPE B	RP5077	192185.1918	632045.1778		1		
SUB-TOTAL MONUMENTS TO BE SET											10	14		

PROJECT ADJ. FACTOR = 3.281087292 (Metric Grid to Project Ground Feet)
ENG./METRIC CONV.= 3.280833333

Points with prefix 'RP' are proposed right of way monuments. Points with 'CL' prefix are proposed centerline monuments.
R:\07000\07122\ODOT PROJECT FILE\LOR\82645\survey\spreadsheets\DGN Tables\PROPOSED MONUMENTS.dgn table2.xlsx\MONUMENT TABLE

QUANTITY CARRIED TO GENERAL SUMMARY

TOTAL MONUMENTS TO BE SET DURING CONSTRUCTION SHEETS 7 & 8
MONUMENT ASSEMBLY
ITEM 623 TYPE C
24

TOTAL MONUMENTS TO BE RESET AFTER CONSTRUCTION SHEETS 7 & 8
RIGHT OF WAY MONUMENT
ITEM 623 TYPE B
37

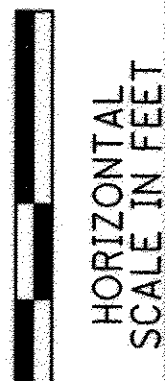
SETTING OF ALL MONUMENTS SHALL BE PERFORMED BY A SURVEYOR REGISTERED IN THE STATE OF OHIO. THE MONUMENT ASSEMBLIES AND REFERENCE MONUMENTS WILL BE INSTALLED BY THE CONTRACTOR AT THE TIME OF CONSTRUCTION. THE IRON PIN AND CAP (WHEN REQUIRED) ARE TO BE INSTALLED BY THE CONTRACTOR'S SURVEYOR.

CHANGES OR ALTERATIONS TO THE LOCATION OF ANY MONUMENTS SHOWN IN THIS TABLE, REQUIRE PRIOR APPROVAL FROM THE DISTRICT REAL ESTATE ADMINISTRATOR OF THE OHIO DEPARTMENT OF TRANSPORTATION. IN THE EVENT THAT CHANGES OR ALTERATIONS ARE APPROVED, A REVISED CENTERLINE PLAT WITH THE NEW LOCATIONS SHALL BE RECORDED IN THE APPLICABLE COUNTY RECORDS AND THE OHIO DEPARTMENT OF TRANSPORTATION. SPECIFICATIONS FOR MONUMENT ASSEMBLIES, REFERENCE MONUMENTS AND RIGHT OF WAY MONUMENTS ARE SHOWN ON STANDARD CONSTRUCTION DRAWING RM-1.1.

MAM	09/25/13	REVISED QUANTITY TABLE
MAM	08/16/13	REVISED QUANTITY TABLE
REV. BY	DATE	DESCRIPTION

R:\07000\07122\ODOT PROJECT FILE\LOR\82645\survey\spreadsheets\82645RCC001.dgn 9/25/2013 11:29:43 AM mcnulty

LORAIN COUNTY, CITY OF ELYRIA
 ORIGINAL ELYRIA TOWNSHIP LOT NOS. 29, 30, 31, 32, 33 & 34 WEST OF RIVER TRACT
 AND ORIGINAL ELYRIA TOWNSHIP LOT NOS. 13, 14, 15 & 16 BRACE TRACT
 TOWNSHIP 6 NORTH, RANGE 17 WEST



PID NO.
82645

R/W DESIGNER
MAM
R/W REVIEWER
TAB

CENTERLINE PLAT

LOR-57-19.42

9/83

867
941

PROJECT GROUND COORDINATES - US SURVEY FEET							SECONDARY CONTROL POINTS	STATE PLANE GRID COORDINATES		
PROJECT COORDINATES (FEET) ARE RELATIVE TO STATE PLANE GRID COORDINATES (METERS)								HORIZONTAL DATUM - NAD83(COR96)		
BY A PROJECT ADJUSTMENT FACTOR (PAF) MULTIPLIER OF : 3.281087292								OHIO NORTH ZONE (3401) FROM CORS		
C/L OF RIGHT OF WAY SR 57				(LOR-57-16.94 & 17.76 (1959) USED FOR ALIGNMENT)			DESCRIPTION	NAME	NORTH (m)	EAST (m)
NAME	STATION	OFFSET (ft)	RT/LT	NORTH (ft)	EAST (ft)	FEATURE				
CP538	100+36.81	363.42	RT	628769.1966	2074207.3637	IPINS	5/8" IRON REBAR WITH RED "KSASSOC" CAP	CP538	191634.4006	632170.7346
CP500	105+59.57	71.95	RT	629297.7380	2073926.5250	IPINS	5/8" IRON REBAR WITH RED "KSASSOC" CAP	CP500	191795.4879	632085.1414
CP501	110+28.90	-60.39	LT	629769.6480	2073803.6980	IPINS	5/8" IRON REBAR WITH RED "KSASSOC" CAP	CP501	191939.3152	632047.7066
CP509	115+65.82	83.50	RT	630303.5550	2073958.4180	IPINS	5/8" IRON REBAR WITH RED "KSASSOC" CAP	CP509	192102.0378	632094.8617
CP510	121+02.34	-72.95	LT	630842.4600	2073812.0930	RSPKS	RAILROAD SPIKE	CP510	192266.2837	632050.2652
CP518	127+66.27	-165.60	LT	631500.9370	2073713.9200	IPINS	5/8" IRON REBAR WITH RED "KSASSOC" CAP	CP518	192466.9723	632020.3443
CP512	128+97.13	-70.96	LT	631633.8160	2073804.4160	IPINS	5/8" IRON REBAR WITH RED "KSASSOC" CAP	CP512	192507.4708	632047.9254
CP525	134+24.51	78.60	RT	632168.1880	2073927.0440	IPINS	5/8" IRON REBAR WITH RED "KSASSOC" CAP	CP525	192670.3351	632085.2996
CP526	139+42.70	-64.85	LT	632673.2440	2073742.1030	IPINS	5/8" IRON REBAR WITH RED "KSASSOC" CAP	CP526	192824.2645	632028.9338
CP527	145+01.95	77.72	RT	633244.8440	2073821.1650	IPINS	5/8" IRON REBAR WITH RED "KSASSOC" CAP	CP527	192998.4751	632053.0301
CP528	149+80.20	-93.08	LT	633698.1510	2073592.2310	IPINS	5/8" IRON REBAR WITH RED "KSASSOC" CAP	CP528	193136.6326	631983.2563
CP531	154+66.07	139.59	RT	634209.1806	2073762.6980	IPINS	5/8" IRON REBAR WITH RED "KSASSOC" CAP	CP531	193292.3827	632035.2107
CP532	159+90.71	-75.94	LT	634702.9520	2073483.6150	IPINS	5/8" IRON REBAR WITH RED "KSASSOC" CAP	CP532	193442.8729	631950.1526
CP533	165.57.23	73.55	RT	635283.6609	2073561.5180	IPINS	5/8" IRON REBAR WITH RED "KSASSOC" CAP	CP533	193619.8596	631973.8957
CP534	173+82.82	-58.16	LT	636086.4794	2073328.1860	IPINS	5/8" IRON REBAR WITH RED "KSASSOC" CAP	CP534	193864.5402	631902.7814
C/L RIGHT OF WAY R-90										
CP529	687+21.27	-220.68	LT	633735.3732	2074213.4900	IPINS	5/8" IRON REBAR WITH RED "KSASSOC" CAP	CP529	193147.9771	632172.6017
CP530	648+79.26	-240.52	LT	633665.9309	2073142.7900	IPINS	5/8" IRON REBAR WITH RED "KSASSOC" CAP	CP530	193126.8127	631846.2770
CP535	649+12.65	232.51	RT	633197.3186	2073215.4020	IPINS	5/8" IRON REBAR WITH RED "KSASSOC" CAP	CP535	192983.9904	631868.4075
CP536	687+65.52	235.80	RT	633284.1566	2074295.5490	IPINS	5/8" IRON REBAR WITH RED "KSASSOC" CAP	CP536	193010.4567	632197.6114
C/L OF RIGHT OF WAY MIDWAY MALL FRONTAGE ROAD										
CP504	16+58.15	27.79	RT	630457.2350	2074217.3880	IPINS	5/8" IRON REBAR WITH RED "KSASSOC" CAP	CP504	192148.8759	632173.7898
CP505	22+20.81	31.42	RT	630924.4470	2074126.8160	IPINS	5/8" IRON REBAR WITH RED "KSASSOC" CAP	CP505	192291.2714	632146.1855
CP507	29+99.69	34.62	RT	631068.3220	2074821.0870	DRILLHS	DRILL HOLE SET	CP507	192335.1212	632357.7833
C/L OF RIGHT OF WAY MIDWAY MALL GRISWOLD ROAD										
CP524	48+60.70	2.92	RT	631934.3290	2073722.6970	IPINS	5/8" IRON REBAR WITH RED "KSASSOC" CAP			
CP517	54+24.55	-51.10	LT	632003.7960	2074284.7080	IPINS	5/8" IRON REBAR WITH RED "KSASSOC" CAP	CP517	192620.2322	632194.3074
C/L RIGHT OF WAY RELOCATED 49TH STREET										
CP516	18+31.12	24.46	RT	631511.1740	2074210.6050	IPINS	5/8" IRON REBAR WITH RED "KSASSOC" CAP	CP516	192470.0923	632171.7225
CP518	13+34.63	25.15	RT	631500.9370	2073713.9200	IPINS	5/8" IRON REBAR WITH RED "KSASSOC" CAP	CP518	192466.9723	632020.3443
CP519	6+48.97	59.15	RT	631453.88	2073029.04	IPINS		CP519	192452.6316	631811.6080
C/L RIGHT OF WAY TILLOTSON STREET										
CP508	7+00.33	47.54	RT	631335.2450	2074861.2680	IPINS	5/8" IRON REBAR WITH RED "KSASSOC" CAP	CP508	192416.4732	632370.0296
CP513	10+33.48	34.25	RT	631667.8240	2074837.8060	IPINS	5/8" IRON REBAR WITH RED "KSASSOC" CAP	CP513	192517.8356	632362.8789
C/L CONST. MIDWAY BOULEVARD										
CP522	8+27.65	3.52	RT	631265.2975	2073712.5220	IPINS	5/8" IRON REBAR WITH RED "KSASSOC" CAP	CP522	192395.1548	632019.9182
CP511	11+03.08	17.06	RT	631298.5518	2073986.7160	IPINS	5/8" IRON REBAR WITH RED "KSASSOC" CAP	CP511	192405.2900	632103.4862

PROJECT ADJ. FACTOR = 3.281087292 (Metric Grid to Project Ground Feet)
 ENG./METRIC CONV. = 3.28083333

Points with prefix 'CP' are control points as described.
 \\ksa7\projects\07000\07122\ODOT PROJECT FILE\LOR\82645\survey\spreadsheets\DGN Tables\SECONDARY CONTROL dgn table.xls\MONUMENT TABLE

R:\07000\07122\ODOT PROJECT FILE\LOR\82645\row\sheet\82645RCC001.dgn 5/16/2013 12:01:19 PM mcultym

LORAIN COUNTY, CITY OF ELYRIA
 ORIGINAL ELYRIA TOWNSHIP LOT NOS. 29, 30, 31, 32, 33 & 34 WEST OF RIVER TRACT
 AND ORIGINAL ELYRIA TOWNSHIP LOT NOS. 13, 14, 15 & 16 BRACE TRACT
 TOWNSHIP 6 NORTH, RANGE 17 WEST

PROPOSED HIGHWAY
 CENTERLINE

HORIZONTAL
 SCALE IN FEET

PID NO.
82645

R/W DESIGNER
 MAM
 R/W REVIEWER
 TAB

CENTERLINE PLAT

LOR-57-19.42

9/10
 10/83

868
 941

PROJECT GROUND COORDINATES - US SURVEY FEET							EXISTING BOUNDARY MONUMENTS	STATE PLANE GRID COORDINATES			COMMENT
PROJECT COORDINATES (FEET) ARE RELATIVE TO STATE PLANE GRID COORDINATES (METERS)								HORIZONTAL DATUM - NAD83(COR96)			
BY A PROJECT ADJUSTMENT FACTOR (PAF) MULTIPLIER OF : 3.281087292								OHIO NORTH ZONE (3401) FROM CORS			
C/L OF RIGHT OF WAY SR 57											
NAME	STATION	OFFSET (ft)	RT/LT	NORTH (ft)	EAST (ft)	FEATURE	DESCRIPTION	NAME	NORTH (m)	EAST (m)	COMMENT
MN10040	103+47.83	120.10	RT	629085.0706	2073970.3863	IPIPE	3/4" IRON PIPE	MN10040	191730.6718	632098.5093	TO BE REMOVED
MN2097	106+04.08	103.94	RT	629341.5985	2073959.4146	IPIPE	1" IRON PIPE	MN2097	191808.8556	632095.1654	OUTSIDE OF CONST. LIMITS
MN10047	106+21.01	-151.71	LT	629363.6940	2073704.1590	IPIN	5/8" IRON PIN	MN10047	191815.5898	632017.3694	TO BE REMOVED
MN10039	106+65.91	99.92	RT	629403.4970	2073956.6420	IPIPE	3/4" IRON PIPE	MN10039	191827.7208	632094.3204	OUTSIDE OF CONST. LIMITS
MN10048	107+15.69	-122.00	LT	629457.7550	2073735.7720	IPIN	5/8" "KS ASSOC" CAPPED IRON PIN	MN10048	191844.2574	632027.0043	TO BE REMOVED
MN2098	111+47.37	159.95	RT	629883.6460	2074026.3930	IPIN	"MOSTEEN" CAPPED IRON PIN	MN2098	191974.0592	632115.5789	OUTSIDE OF CONST. LIMITS
MN10050	111+59.60	-102.69	LT	629901.1800	2073764.0550	IPIN	5/8" IRON PIN	MN10050	191979.4031	632035.6243	OUTSIDE OF CONST. LIMITS
MN10049	111+59.61	-112.99	LT	629901.4020	2073753.7610	IPIN	5/8" IRON PIN	MN10049	191979.4708	632032.4869	OUTSIDE OF CONST. LIMITS
MN2099	112+45.63	99.94	RT	629983.0980	2073968.3860	IPIN	"MOSTEEN" CAPPED IRON PIN	MN2099	192004.3699	632097.8997	TO BE PRESERVED
MN10051	112+99.11	-103.36	LT	630040.6740	2073766.2090	IPIN	5/8" "KS ASSOC REF" CAPPED IRON PIN	MN10051	192021.9177	632036.2808	OUTSIDE OF CONST. LIMITS
MN2101	113+07.30	159.86	RT	630043.5450	2074029.5310	IPIPE	1" IRON PIPE	MN2101	192022.7927	632116.5353	OUTSIDE OF CONST. LIMITS
MN10052	116+71.02	-84.33	LT	630412.1280	2073792.7490	IPIN	5/8" "KS ASSOC" CAPPED IRON PIN	MN10052	192135.1284	632044.3696	TO BE PRESERVED
MN10055	118+35.82	-84.73	LT	630576.8940	2073795.6820	MAG	MAG NAIL	MN10055	192185.3452	632045.2635	TO BE REMOVED
MN10056	118+84.35	-104.51	LT	630625.8190	2073776.8850	IPIN	5/8" "DEMPSEY" CAPPED IRON PIN	MN10056	192200.2565	632039.5346	TO BE PRESERVED
MN10064	124+84.14	-896.95	LT	631213.3170	2072988.0720	IPIN	5/8" "DEMPSEY" CAPPED IRON PIN	MN10064	192379.3123	631799.1225	TO BE PRESERVED
MN2108	128+00.17	0.07	RT	631539.4201	2073878.5528	IPIN	"ODOT CONTROL" CAPPED IRON PIN	MN2108	192478.7011	632070.5206	TO BE REMOVED
MN10156	136+97.42	-181.57	LT	632420.3120	2073647.4930	IPIN	1" IRON PIN	MN10156	192747.1767	632000.0989	OUTSIDE OF CONST. LIMITS
MN10164	138+99.53	-146.39	LT	632622.8040	2073664.9920	IPIPE	1" IRON PIPE	MN10164	192808.8916	632005.4322	OUTSIDE OF CONST. LIMITS
MN10028	154+59.22	277.85	RT	634219.5680	2073900.7350	IPIPE	1" IRON PIPE	MN10028	193295.5486	632077.2812	OUTSIDE OF CONST. LIMITS
MN10026	155+53.62	157.16	RT	634298.2390	2073769.2420	IPIN	5/8" "KS ASSOC" CAPPED IRON PIN	MN10026	193319.5257	632037.2052	OUTSIDE OF CONST. LIMITS
MN10011	157+99.63	135.18	RT	634539.6010	2073716.8470	IPIPE	1" IRON PIPE	MN10011	193393.0873	632021.2364	OUTSIDE OF CONST. LIMITS
MN10010	158+49.65	112.25	RT	634586.3820	2073687.8830	IPIPE	1" IRON PIPE	MN10010	193407.3450	632012.4088	OUTSIDE OF CONST. LIMITS
MN2171	159+58.88	112.24	RT	634694.7620	2073674.2950	IPIN	5/8" "SIMON" CAPPED IRON PIN	MN2171	193440.3768	632008.2675	OUTSIDE OF CONST. LIMITS
MN2170	160+49.80	112.63	RT	634785.0320	2073663.3770	IPIN	5/8" "SIMON" CAPPED IRON PIN	MN2170	193467.8890	632004.9399	OUTSIDE OF CONST. LIMITS
MN10022	161+84.65	89.99	RT	634916.0150	2073624.1460	IPIN	5/8" "SIMON" CAPPED IRON PIN	MN10022	193507.8096	631992.9832	OUTSIDE OF CONST. LIMITS
C/L OF RIGHT OF WAY I-90											
MN10169	643+56.75	199.68	RT	633183.8050	2072658.6970	IPIPE	1" IRON PIPE	MN10169	192979.8718	631698.7366	OUTSIDE OF CONST. LIMITS
MN10168	645+48.14	269.44	RT	633130.1990	2072855.2260	IPIPE	1" IRON PIPE BENT	MN10168	192963.5339	631758.6341	OUTSIDE OF CONST. LIMITS
MN10167	649+30.67	620.60	RT	632812.0640	2073265.6370	IPIPE	1" IRON PIPE BENT	MN10167	192866.5737	631883.7179	OUTSIDE OF CONST. LIMITS
MN10175	649+49.35	-870.07	LT	634299.1310	2073160.2810	IPIPE	1" IRON PIPE	MN10175	193319.7975	631851.6078	OUTSIDE OF CONST. LIMITS
MN10166	650+00.62	624.68	RT	632813.8180	2073335.6810	IPIPE	1" IRON PIPE BENT	MN10166	192867.1083	631905.0657	OUTSIDE OF CONST. LIMITS
MN10178	650+82.97	-864.65	LT	634304.8350	2073293.8930	IPIPE	1-1/2" IRON PIPE	MN10178	193321.5360	631892.3297	OUTSIDE OF CONST. LIMITS
MN10165	652+11.20	695.35	RT	632760.9060	2073551.4030	IPIPE	1" IRON PIPE	MN10165	192850.9819	631970.8128	OUTSIDE OF CONST. LIMITS
MN10164	653+12.91	842.42	RT	632622.8040	2073664.9920	IPIPE	1" IRON PIPE	MN10164	192808.8916	632005.4322	OUTSIDE OF CONST. LIMITS
MN10033	687+50.22	-599.12	LT	634114.9070	2074210.8700	IPIPE	1" IRON PIPE	MN10033	193263.6503	632171.8032	OUTSIDE OF CONST. LIMITS
C/L OF CONST. MIDWAY BOULEVARD											
MN10064	1+02.50	40.00	RT	631213.3170	2072988.0720	IPIN	5/8" "DEMPSEY" CAPPED IRON PIN	MN10064	192379.3123	631799.1225	TO BE PRESERVED
MN2104	13+65.59	-29.72	LT	631322.9430	2074249.2410	IPIPE	1" IRON PIPE	MN2104	192412.7238	632183.4978	TO BE PRESERVED
MN2105	12+55.28	-32.85	LT	631321.3390	2074138.0190	IPIPE	1" IRON PIPE	MN2105	192412.2350	632149.5999	TO BE PRESERVED
MN2106	11+45.99	-46.20	LT	631329.6390	2074028.2350	IPIPE	1" IRON PIPE	MN2106	192414.7646	632116.1403	OUTSIDE OF CONST. LIMITS
MN2112	14+65.53	-29.71	LT	631324.6370	2074349.1650	IPIPE	1" IRON PIPE	MN2112	192413.2401	632213.9524	TO BE PRESERVED
MN2148	17+15.51	-29.97	LT	631329.1350	2074599.1010	IPIPE	1" IRON PIPE	MN2148	192414.6110	632290.1271	OUTSIDE OF CONST. LIMITS
MN2149	17+65.23	-30.05	LT	631330.0630	2074648.8110	IPIPE	1" IRON PIPE	MN2149	192414.8938	632305.2776	OUTSIDE OF CONST. LIMITS
MN2150	18+71.29	29.97	RT	631271.8500	2074755.8760	DRILLH	DRILL HOLE	MN2150	192397.1519	632337.9085	TO BE REMOVED
C/L OF RIGHT OF WAY LEONA STREET (C/L OF CONST. IS 15.00' EAST OF AND PARALLEL WITH C/L OF RIGHT OF WAY)											
MN10066	7+80.91	-24.80	LT	631292.2570	2072936.9830	IPIPE	1" IRON PIPE	MN10066	192403.3714	631783.5517	OUTSIDE OF CONST. LIMITS
MN10067	9+26.19	54.76	RT	631438.7540	2073014.2930	IPIPE	1" IRON PIPE	MN10067	192448.0204	631807.1141	TO BE PRESERVED
MN10085	10+89.11	-24.96	LT	631600.4180	2072932.0560	IPIPE	1" IRON PIPE	MN10085	192497.2918	631782.0501	OUTSIDE OF CONST. LIMITS
MN10086	11+91.17	-25.00	LT	631702.4650	2072930.4380	IPIN	5/8" ORANGE CAPPED IRON PIN FD. & USED	MN10086	192528.3934	631781.5570	TO BE PRESERVED

PROJECT ADJ. FACTOR = 3.281087292 (Metric Grid to Project Ground Feet)
 ENG./METRIC CONV. = 3.280833333

Points with prefix 'MN' are centerline & right of way monuments located.
 R:\07000\07122\ODOT PROJECT FILE\LOR\82645\survey\spreadsheets\IGN Tables\EXISTING MONUMENTS dgn table 1.xisrj\MONUMENT TABLE

R:\AD7000\07122\ODOT PROJECT FILE\LOR\82645\row\sheets\82645\RC001.dgn 5/30/2013 2:03:07 PM mcnulty

LORAIN COUNTY, CITY OF ELYRIA
 ORIGINAL ELYRIA TOWNSHIP LOT NOS. 29, 30, 31, 32, 33 & 34 WEST OF RIVER TRACT
 AND ORIGINAL ELYIRA TOWNSHIP LOT NOS. 13, 14, 15 & 16 BRACE TRACT
 TOWNSHIP 6 NORTH, RANGE 17 WEST

HORIZONTAL SCALE IN FEET

PID NO. 82645

R/W DESIGNER MAM
R/W REVIEWER TAB

CENTERLINE PLAT

LOR-57-19.42

10/10
11/83

869
941

R:\07000\07122\0DOT PROJECT FILE\LOR-82645\row\sheet\82645RC001.dgn 5/16/2013 12:01:31 PM mcnulty

PROJECT GROUND COORDINATES - US SURVEY FEET							EXISTING BOUNDARY MONUMENTS	STATE PLANE GRID COORDINATES			COMMENT
PROJECT COORDINATES (FEET) ARE RELATIVE TO STATE PLANE GRID COORDINATES (METERS)								HORIZONTAL DATUM - NAD83(COR96)			
BY A PROJECT ADJUSTMENT FACTOR (PAF) MULTIPLIER OF : 3.281087292								OHIO NORTH ZONE (3401) FROM CORS			
C/L OF RIGHT OF WAY GRISWOLD ROAD											
NAME	STATION	OFFSET (ft)	RT/LT	NORTH (ft)	EAST (ft)	FEATURE	NAME	NORTH (m)	EAST (m)	COMMENT	
MN10117	42+64.55	31.35	RT	631895.4130	2073127.1350	IPIPE	1" IRON PIPE	MN10117	192587.1995	631841.5057	TO BE PRESERVED
MN10116	43+64.83	31.39	RT	631897.1380	2073227.4030	IPIPE	1" IRON PIPE	MN10116	192587.7253	631872.0651	TO BE RESET
MN10115	45+14.57	31.48	RT	631899.6870	2073377.1200	IPIN	5/8" "KS ASSOC" CAPPED IRON PIN	MN10115	192588.5021	631917.6954	TO BE PRESERVED
MN10114	46+64.59	31.62	RT	631902.1860	2073527.1150	IPIN	5/8" CAPPED IRON PIN	MN10114	192589.2638	631963.4104	OUTSIDE OF CONST. LIMITS
MN10118	48+14.68	31.81	RT	631904.6340	2073677.1840	IPIPE	3/4" IRON PIPE	MN10118	192590.0099	632009.1480	TO BE PRESERVED
MN2154	55+42.83	29.95	RT	631926.4060	2074405.4120	IPIN	5/8" CAPPED IRON PIN	MN2154	192596.6455	632231.0952	TO BE PRESERVED
MN2157	56+45.28	-146.75	LT	632106.1639	2074502.4036	IPIPE	1" IRON PIPE	MN2157	192651.4316	632260.6560	OUTSIDE OF CONST. LIMITS
MN2153	57+17.75	30.00	RT	631931.7180	2074580.2550	IPIN	5/8" CAPPED IRON PIN	MN2153	192598.2645	632284.3833	TO BE PRESERVED
MN2128	59+59.65	-29.93	LT	631999.0320	2074820.2050	IPIPE	1" IRON PIPE	MN2128	192618.7802	632357.5145	TO BE PRESERVED
MN2138	66+92.88	0.00		631991.5860	2075554.0010	MONBOX	5/8" "KS ASSOC" CAPPED IRON PIN FD. & USED	MN2138	192616.5109	632581.1587	OUTSIDE OF CONST. LIMITS
C/L OF RIGHT OF WAY TILLOTSON STREET											
MN2117	10+00.00	0.00		631633.3130	2074804.5900	MONBOX	1" IRON PIPE	MN2117	192507.3175	632352.7554	TO BE PRESERVED
MN2119	10+65.09	-39.93	LT	631697.1640	2074762.6940	IPIPE	1" IRON PIPE	MN2119	192526.7778	632339.9865	TO BE PRESERVED
MN2127	13+05.14	-0.06	LT	631938.3180	2074795.2360	MONBOX	5/8" "KS ASSOC" CAPPED IRON PIN	MN2127	192600.2760	632349.9046	TO BE PRESERVED
MN2126	13+35.13	0.00		631968.2950	2074794.3770	MONBOX	5/8" "KS ASSOC" CAPPED IRON PIN	MN2126	192609.4123	632349.6428	TO BE PRESERVED
C/L OF RIGHT OF WAY RELOCATED 49TH STREET											
MN2123	18+17.13	-0.08	LT	631535.3500	2074195.8540	MONBOX	1" IRON PIN	MN2123	192477.4606	632167.2267	TO BE REMOVED
MN2122	19+73.82	10.70	RT	631538.3790	2074353.4870	MONBOX	1" IRON PIN	MN2122	192478.3838	632215.2696	TO BE REMOVED
MN2156	20+29.76	-88.63	LT	631645.7570	2074388.8470	IPIN	5/8" "SIMON" CAPPED IRON PIN	MN2156	192511.1101	632226.0465	OUTSIDE OF CONST. LIMITS
MN2147	21+88.47	142.55	RT	631461.0360	2074595.0590	IPIPE	1" IRON PIPE	MN2147	192454.8114	632288.8952	OUTSIDE OF CONST. LIMITS
MN2161	22+35.69	-93.87	LT	631701.7500	2074587.2180	IPIN	IRON PIN	MN2161	192528.1755	632286.5055	OUTSIDE OF CONST. LIMITS
MN2118	22+85.90	-10.25	LT	631629.1100	2074654.0490	MONBOX	UNABLE TO OPEN	MN2118	192506.0365	632306.8740	TO BE REMOVED
C/L OF RIGHT OF WAY 52ND STREET											
MN10061	50+66.97	24.68	RT	630562.9650	2072948.4440	IPIN	5/8" "KS ASSOC" CAPPED IRON PIN	MN10061	192181.1000	631787.0448	TO BE PRESERVED
MN10059	51+16.63	-25.00	LT	630613.4400	2072997.2970	IPIPE	5/8" "KS ASSOC" CAPPED IRON PIN FD. & USED	MN10059	192196.4836	631801.9341	TO BE PRESERVED
MN10060	51+16.73	24.63	RT	630563.8150	2072998.1960	IPIPE	3/4" IRON PIPE	MN10060	192181.3591	631802.2081	TO BE PRESERVED
C/L OF RIGHT OF WAY MIDWAY BOULEVARD											
MN2105	12+54.43	-25.00	LT	631321.3390	2074138.0190	IPIPE	1" IRON PIPE FD. & USED	MN2105	192412.2350	632149.5999	TO BE PRESERVED
MN2143	26+90.43	-25.00	LT	631345.7120	2075573.8110	MONBOX	1" IRON PIN FD. & USED	MN2143	192419.6633	632587.1963	OUTSIDE OF CONST. LIMITS
C/L OF RIGHT 50TH STREET											
MN10080	-12+97.39	-25.00	LT	631270.5738	2071586.6910	IPIPE	1" IRON PIPE FD. & USED	MN10080	192396.7629	631372.0138	OUTSIDE OF CONST. LIMITS
MN10064	1+02.87	55.00	RT	631213.3166	2072988.0718	IPIN	5/8" "DEMPSEY" CAPPED IRON PIN	MN10064	192379.3122	631799.1224	TO BE PRESERVED
MN10093	7+87.87	55.00	RT	631224.4340	2073672.9800	IPIN	5/8" "DEMPSEY" CAPPED IRON PIN FD. & USED	MN10093	192382.7006	632007.8667	TO BE PRESERVED
C/L OF RIGHT SCHADEN ROAD											
MN10184	2+48.23	-30.00	LT	634653.2557	2072816.1576	IPIN	5/8" IRON PIN FD. & USED	MN10184	193427.7266	631746.7269	OUTSIDE OF CONST. LIMITS
MN2184	21+75.82	-30.00	LT	634689.5944	2074743.4040	IPIN	5/8" "SIMON" CAPPED IRON PIN	MN2184	193438.8018	632334.1074	OUTSIDE OF CONST. LIMITS
C/L OF RIGHT OF WAY CREEKFIELD COURT											
MN2192	1+00.14	-130.38	LT	634120.9775	2074554.6614	MONBOX	1" IRON PIPE FD. & USED	MN2192	193265.5004	632276.5829	OUTSIDE OF CONST. LIMITS
MN2193	4+58.29	0.18	RT	634319.5279	2074240.3421	MONBOX	1" IRON PIPE FD. & USED	MN2193	193326.0140	632180.7856	OUTSIDE OF CONST. LIMITS

PROJECT ADJ. FACTOR = 3.281087292 (Metric Grid to Project Ground Feet)
 ENG./METRIC CONV. = 3.280833333

Points with prefix 'MN' are centerline & right of way monuments located.

\\ksa7\projects\07000\07122\ODOT PROJECT FILE\LOR\82645\survey\spreadsheets\DCN Tables\EXISTING MONUMENTS.dgn table 2.xlsm\MONUMENT TABLE