

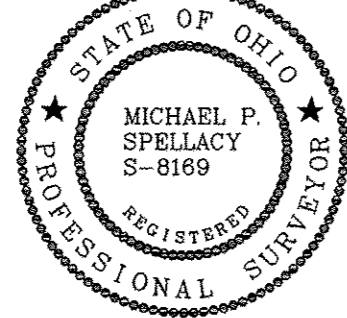
ELEVENTH AMENDMENT TO DECLARATION OF CONDOMINIUM FOR QUARRY LAKES AT AMHERST CONDOMINIUM BEING A PART OF ORIGINAL AMHERST TOWNSHIP LOT NUMBER 21, NOW IN THE CITY OF AMHERST LORAIN COUNTY STATE OF OHIO AUGUST 13, 2013 SCALE 1 INCH = 60 FEET

EXHIBIT B ADDING UNITS AS CONSTRUCTED: UNITS 511, AND 550

GRANTOR: AMHERST CONDOMINIUMS, L.L.C.

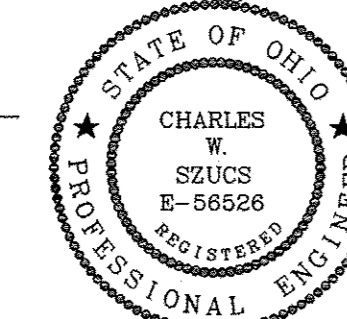
I HEREBY CERTIFY THAT THIS DRAWING ACCURATELY REFLECTS THE LOCATION OF IMPROVEMENTS AND RECORDED EASEMENTS REFLECTED IN FIDELITY NATIONAL TITLE INSURANCE COMPANY A.L.T.A. POLICY COMMITMENT F006-1096 DATED OCTOBER 9, 2007

Michael P. Spellacy 8/23/2013
MICHAEL P. SPELLACY P.S. #6169 DATE



I HEREBY CERTIFY THAT THESE DRAWINGS ACCURATELY SHOW EACH BUILDING AS BUILT OR CONSTRUCTED.

CWS 08-23-15
CHARLES W. SZUCS, P.E. #66526 DATE



ACREAGE BREAKDOWN:

ACREAGE OF UNITS	0.1058 ACRES
ACREAGE OF COMMON ELEMENTS OUTSIDE OF BUILDINGS (NOT INCLUDING COMMON ELEMENTS UNDER BUILDINGS)	1.8761 ACRES
TOTAL AREA OF LAND DECLARED	1.9819 ACRES
PREVIOUSLY DECLARED	13.6988 ACRES
ADDITIONAL LANDS AMHERST CONDOMINIUMS LLC	0.9122 ACRES
LAND CONVEYED TO THE CITY OF AMHERST FOR DEDICATED ROADWAY	2.1352 ACRES (LESS 0.1184 ACRES OF PREVIOUSLY DECLARED LAND) 2.0168 NET
ADDITIONAL LANDS TUJO EAST LTD.	31.2134 ACRES
TOTAL	49.8231 ACRES

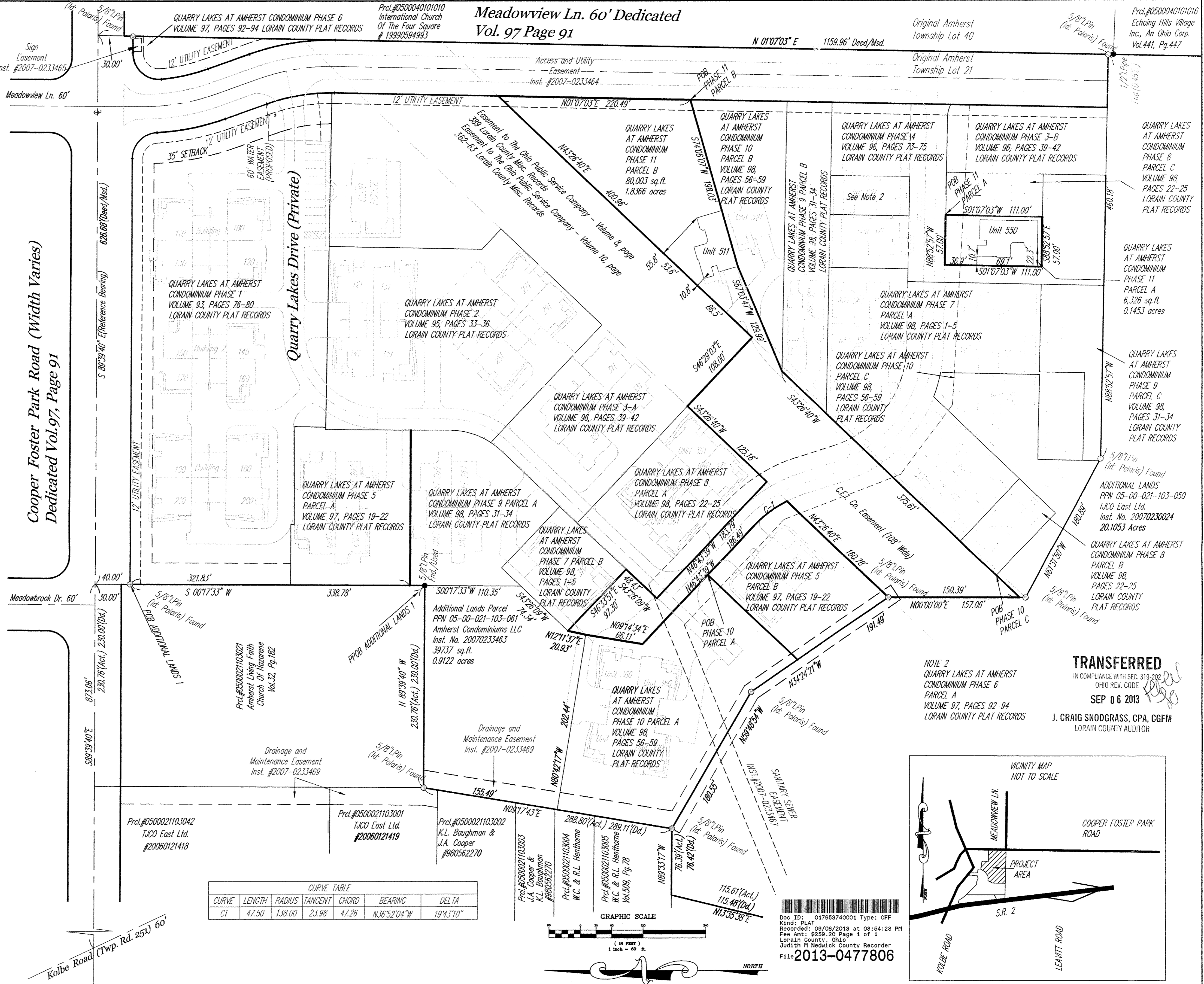
BOUNDARY SURVEY LEGEND

5/8" Iron Pin Set	○	A, Act.	Actual Measurement or Calculation
Iron Pin/Pipe Found	●	U, Used	Used Measurement or Monument
Mon Box Found With Pin/Pipe	Ⓜ	M, Msd.	Measured
Monument Box Found (Empty)	Ⓜ	D, R, Rec.	Deed or Record
Survey Nail Set	△	Calc.	Calculated
Survey Nail Found	△	C/L	Centerline
Stone/Concrete Monument Found	⊙	O, Obs.	Observed
Drill Hole Set	⊙	P.P.N.	Permanent Parcel Number
Drill Hole Found	⊙		
Railroad Spike Set	⊕		
Railroad Spike Found	⊕		

PERCENTAGE OF OWNERSHIP INTEREST QUARRY LAKES AT AMHERST CONDOMINIUM

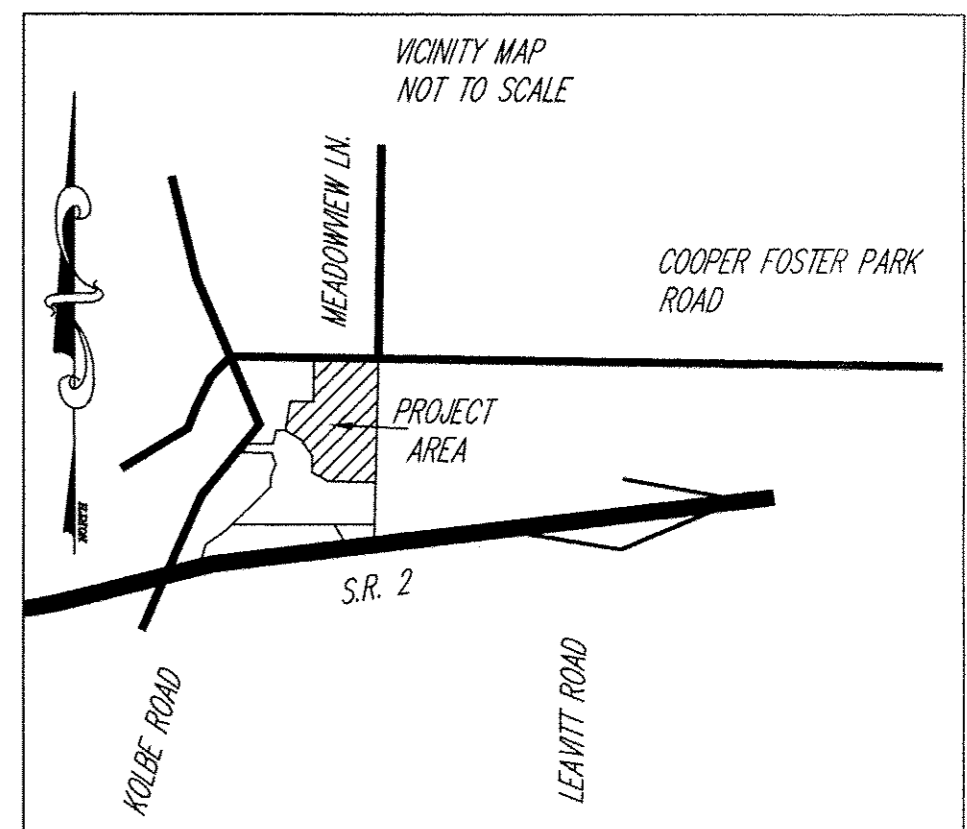
UNIT NO. PERCENTAGE OF OWNERSHIP IN COMMON AREAS

100	1.4205 % Phase 1
110	1.4205 %
120	1.4205 %
130	1.4205 %
140	1.4205 %
150	1.4205 %
160	1.4205 %
170	1.4205 %
180	1.4205 %
190	1.4205 %
200	1.4205 %
210	1.4205 %
121	1.4205 % Phase 2
131	1.4205 %
141	1.4205 %
151	1.4205 %
261	1.4205 %
271	1.4205 %
281	1.4205 %
291	1.4205 %
301	1.4205 % Phase 3
311	1.4205 %
321	1.4205 %
331	1.4205 %
570	1.7045 %
540	1.7045 % Phase 4
571	1.7045 %
591	1.7045 %
220	1.4205 % Phase 5
230	1.4205 %
240	1.4205 %
250	1.4205 %
400	1.4205 %
410	1.4205 %
581	1.7045 % Phase 6
300	1.4205 % Phase 7
310	1.4205 %
420	1.7045 %
430	1.7045 %
450	1.7045 %
510	1.7045 %
520	1.7045 %
541	1.7045 %
551	1.7045 %
561	1.7044 %
341	1.4205 % Phase 8
351	1.4205 %
361	1.4205 %
371	1.4205 %
440	1.7044 %
560	1.7044 %
260	1.4205 % Phase 9
270	1.4205 %
280	1.4205 %
290	1.4205 %
501	1.7044 %
530	1.7044 %
531	1.7044 %
360	1.4205 % Phase 10
370	1.4205 %
380	1.4205 %
390	1.4205 %
500	1.7044 %
521	1.7044 %
511	1.7044 % Phase 11
550	1.7044 %
DECLARED	100.0000%
REMAINDER OWNED BY DECLARANT	0
TOTAL	100.0000%



CURVE	LENGTH	RADIUS	TANGENT	CHORD	BEARING	DELTA
C1	47.50	138.00	23.98	47.26	N36°52'04"W	19°43'10"

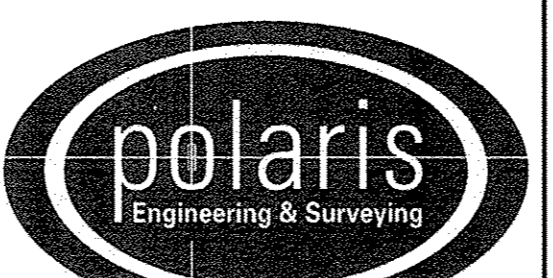
GRAPHIC SCALE
1 inch = 60 feet
NORTH



TRANSFERRED
IN COMPLIANCE WITH SEC. 319.202 OHIO REV. CODE
SEP 06 2013
J. CRAIG SNOODGRASS, CPA, CGFM
LORAIN COUNTY AUDITOR

REV. No.	DATE	BY	CHK'D

DATE: 08/13/2013
SCALE: HOR. 1"=60'
VERT. 1"=0'
FOLDER: 07-013\dwg\plots
FILENAME: sondo_plot_phase_11
TAB: condo 11-1
DRAWN: mps

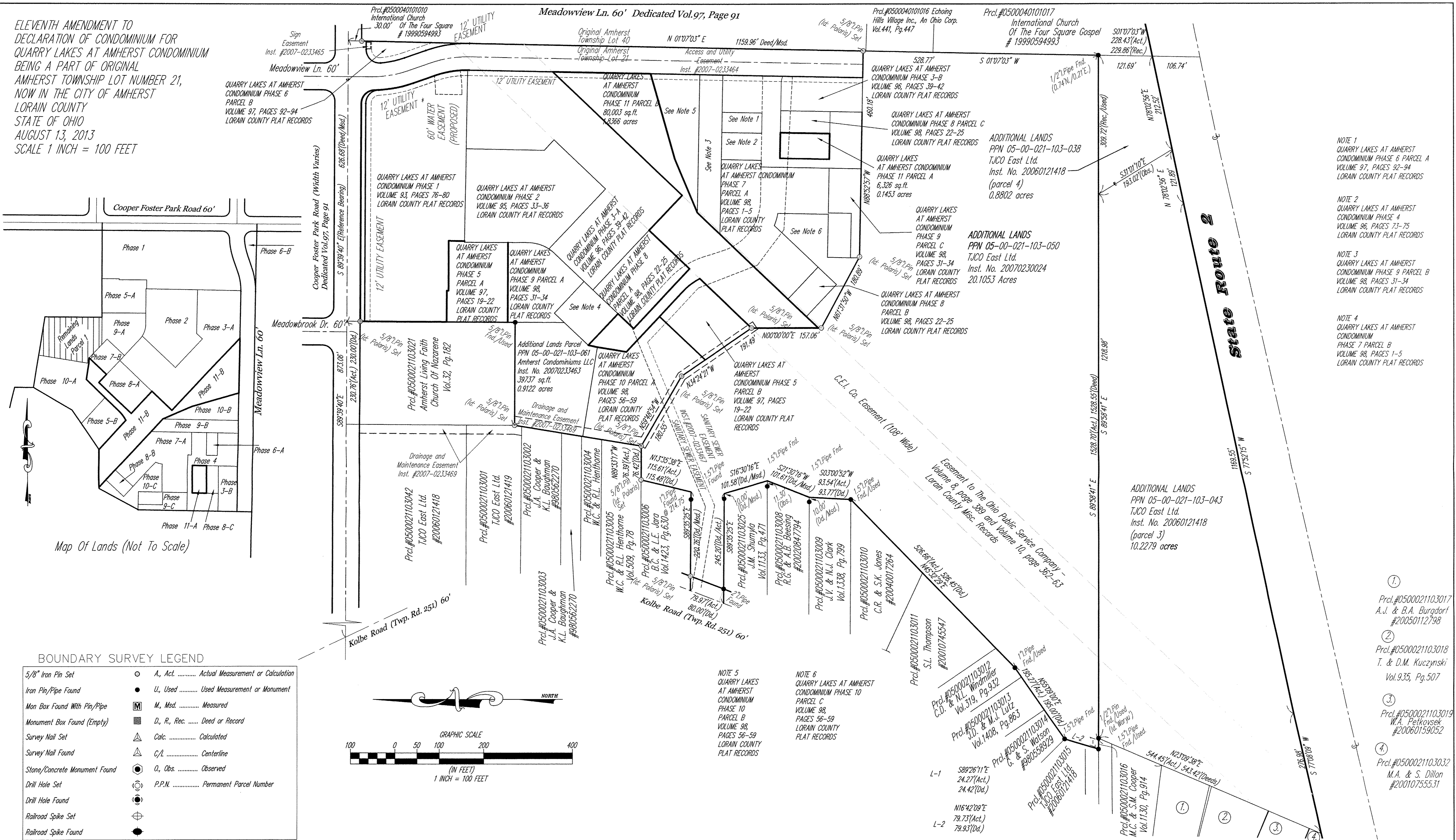


POLARIS ENGINEERING & SURVEYING, INC.
34600 CHARDON ROAD - SUITE D
WILLOUGHBY HILLS, OHIO 44094
(440) 944-4433 (440) 944-3722 (Fax)
www.polaris-es.com

DECLARATION OF CONDOMINIUM PHASE 11
CONTRACT No. 07-013
SHEET 01 OF 03

NATIONWIDE TITLE AGENCY LTD
6155 PARK SQUARE DR #3
SUITE 8
LORAIN, OH 44053

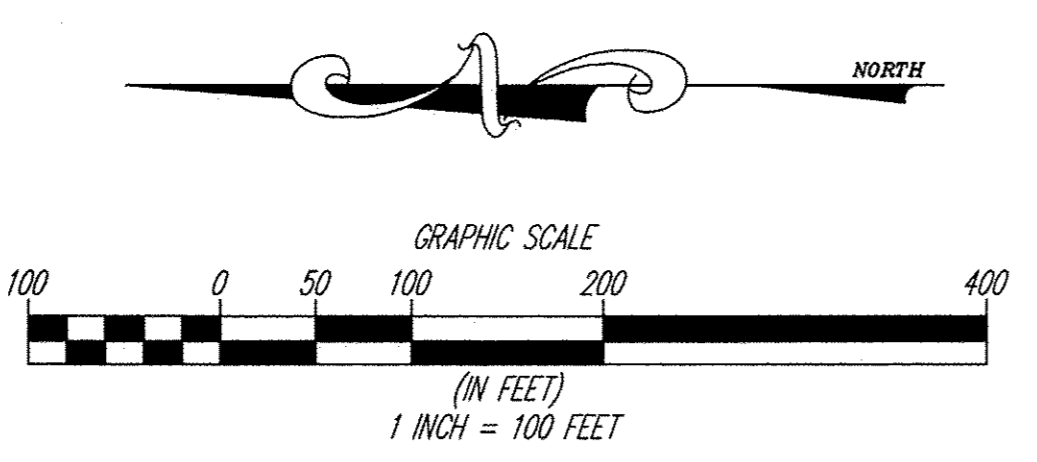
ELEVENTH AMENDMENT TO
DECLARATION OF CONDOMINIUM FOR
QUARRY LAKES AT AMHERST CONDOMINIUM
BEING A PART OF ORIGINAL
AMHERST TOWNSHIP LOT NUMBER 21,
NOW IN THE CITY OF AMHERST
LORAIN COUNTY
STATE OF OHIO
AUGUST 13, 2013
SCALE 1 INCH = 100 FEET



Map Of Lands (Not To Scale)

BOUNDARY SURVEY LEGEND

5/8" Iron Pin Set	○ A, Act. Actual Measurement or Calculation
Iron Pin/Pipe Found	● U, Used Used Measurement or Monument
Man Box Found With Pin/Pipe	■ M, Msd. Measured
Monument Box Found (Empty)	□ D, R, Rec. Deed or Record
Survey Nail Set	△ Calc. Calculated
Survey Nail Found	△ C/L Centerline
Stone/Concrete Monument Found	○ O, Obs. Observed
Drill Hole Set	⊙ P.P.N. Permanent Parcel Number
Drill Hole Found	
Railroad Spike Set	
Railroad Spike Found	



NOTE 1
QUARRY LAKES AT AMHERST
CONDOMINIUM PHASE 6 PARCEL A
VOLUME 97, PAGES 92-94
LORAIN COUNTY PLAT RECORDS

NOTE 2
QUARRY LAKES AT AMHERST
CONDOMINIUM PHASE 4
VOLUME 96, PAGES 73-75
LORAIN COUNTY PLAT RECORDS

NOTE 3
QUARRY LAKES AT AMHERST
CONDOMINIUM PHASE 9 PARCEL B
VOLUME 98, PAGES 31-34
LORAIN COUNTY PLAT RECORDS

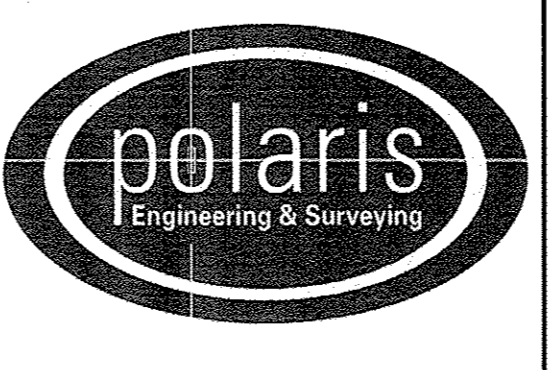
NOTE 4
QUARRY LAKES AT AMHERST
CONDOMINIUM
PHASE 7 PARCEL B
VOLUME 98, PAGES 1-5
LORAIN COUNTY PLAT RECORDS

- ① Prcl.#0500021103017
A.J. & B.A. Burgdorf
#20050112798
- ② Prcl.#0500021103018
T. & D.M. Kuczynski
Vol.935, Pg.507
- ③ Prcl.#0500021103019
W.A. Petkovsek
#20060159052
- ④ Prcl.#0500021103032
M.A. & S. Dillon
#20010755531

REV. No.	DATE	BY	CHK'D

DATE: 08/13/2013
SCALE: HOR. 1"=100'
VERT. 1"=0'
FOLDER: 07-013\dwg\plata
FILENAME:condo_plat_phase11
TAB: condo_11-2
DRAWN: mps

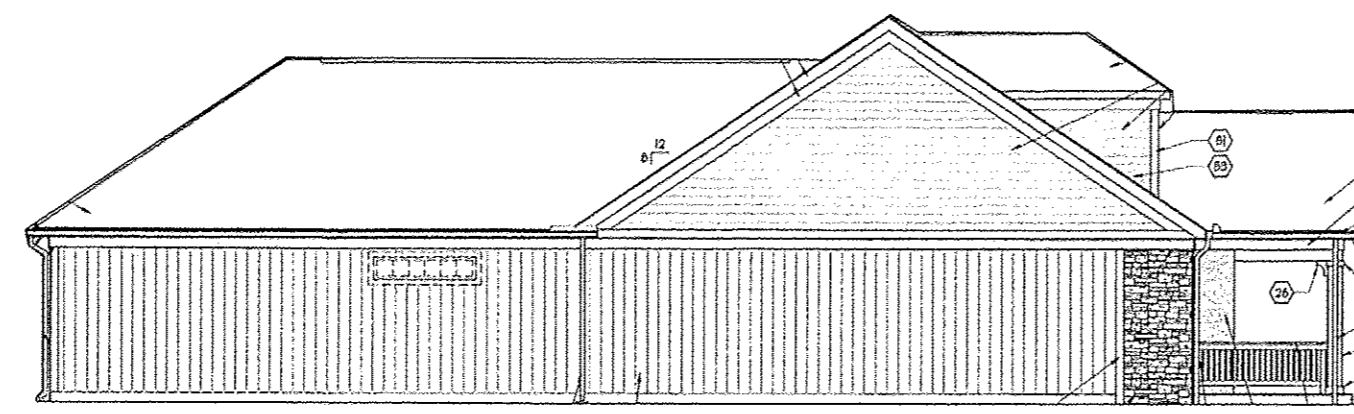
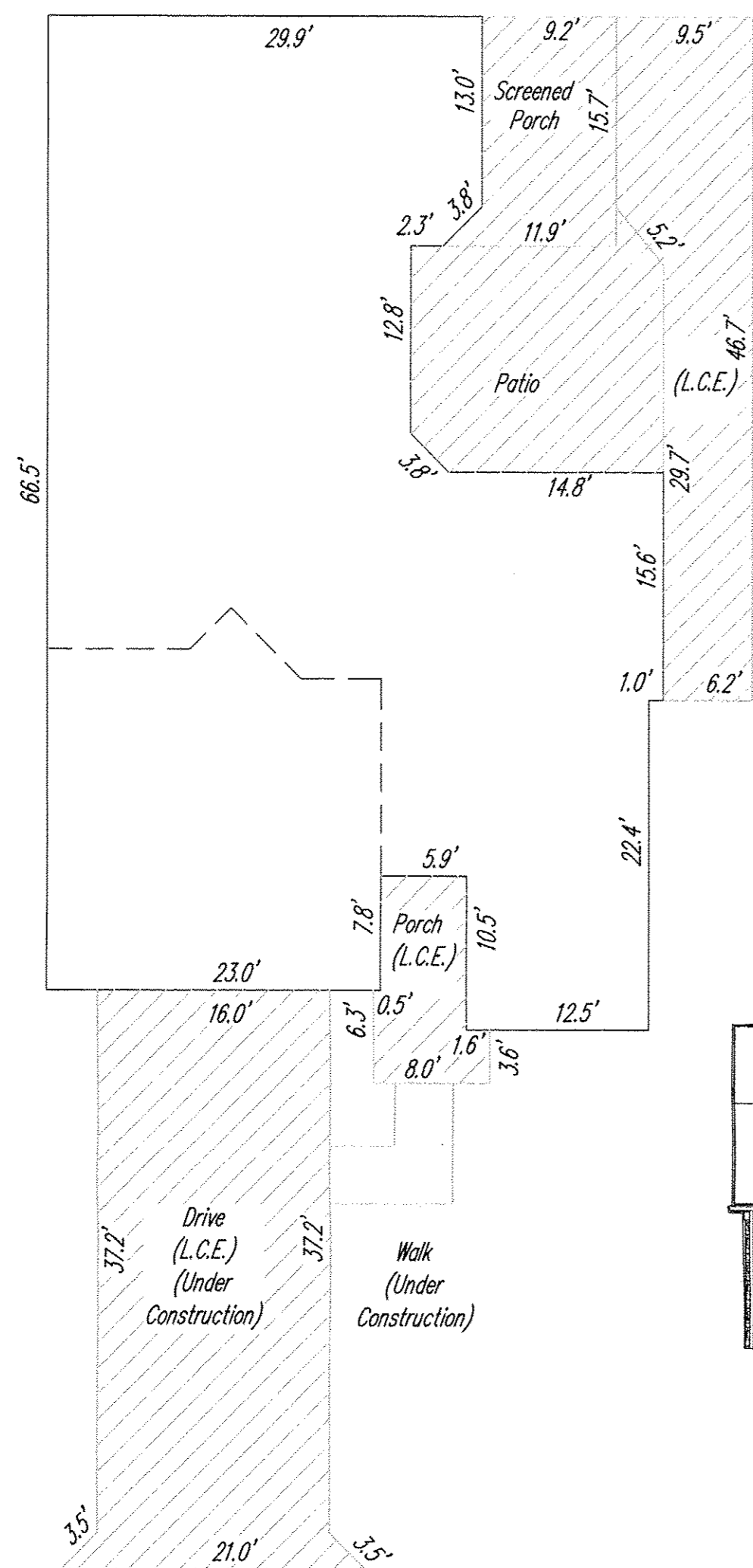
QUARRY LAKES AT AMHERST
CONDOMINIUM PHASE 11
PART OF ORIGINAL AMHERST TOWNSHIP LOT 21
CITY OF AMHERST - LORAIN COUNTY - OHIO



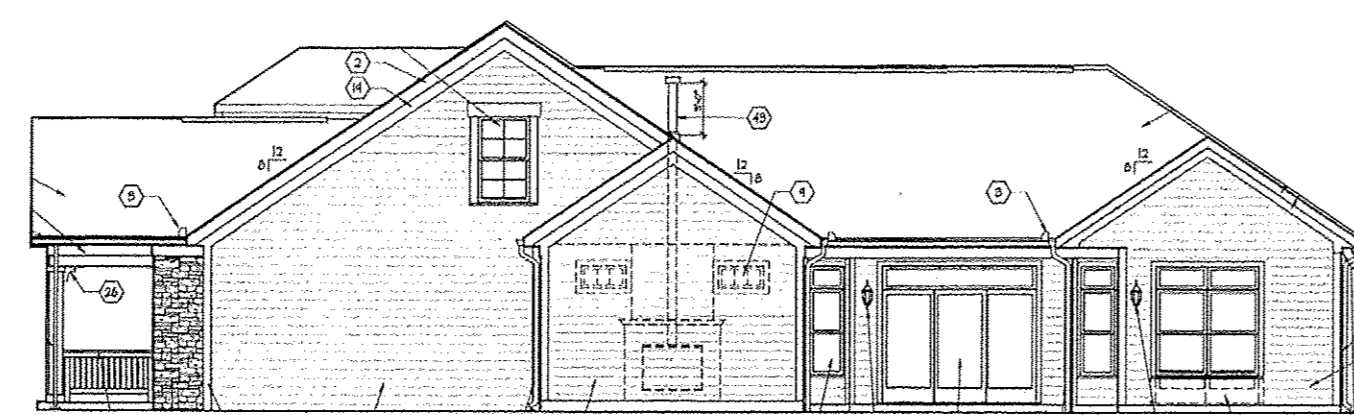
POLARIS ENGINEERING & SURVEYING, INC.
34600 CHARDON ROAD - SUITE D
WILLOUGHBY HILLS, OHIO 44094
(440) 944-4433 (440) 944-3722 (Fax)
www.polaris-es.com

DECLARATION OF
CONDOMINIUM
PHASE 11

CONTRACT No.	
07-013	
SHEET	OF
02	03



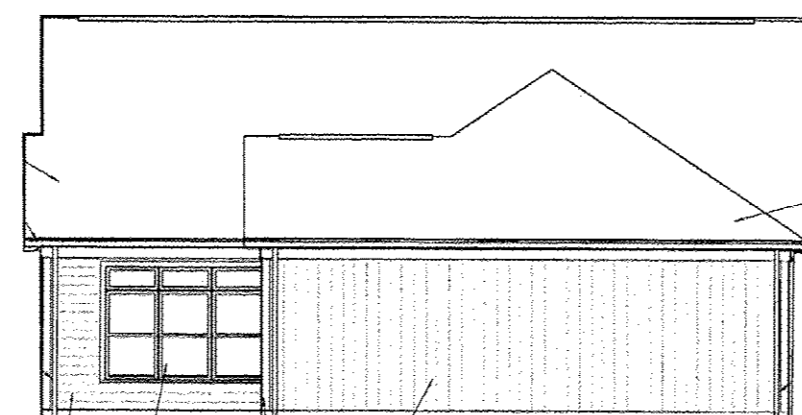
"A" ELEVATION FOR UNIT 550
Bonus Room



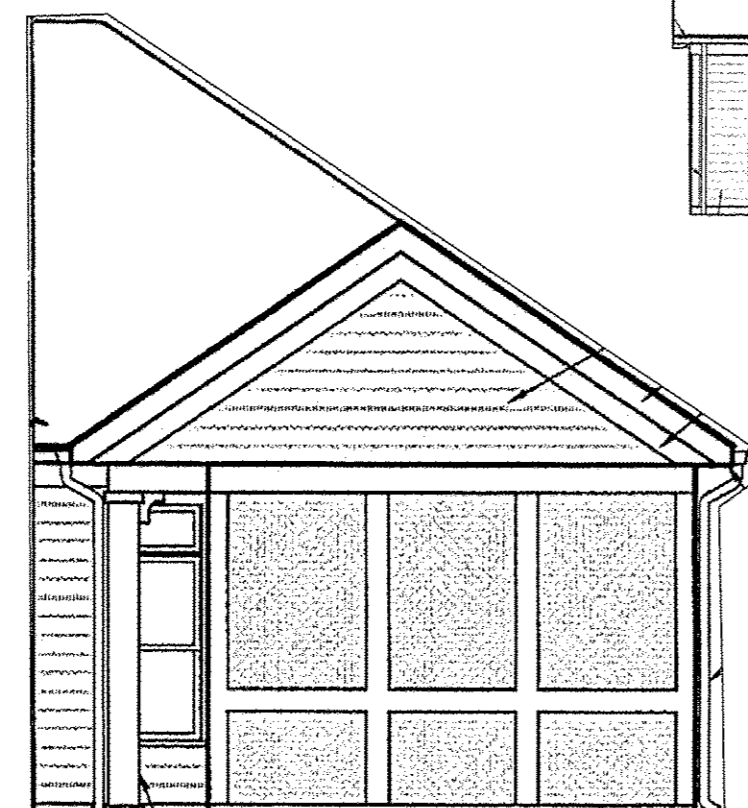
"B" ELEVATION FOR UNIT 550
Bonus Room



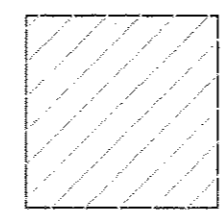
"C" ELEVATION FOR UNIT 550
Bonus Room



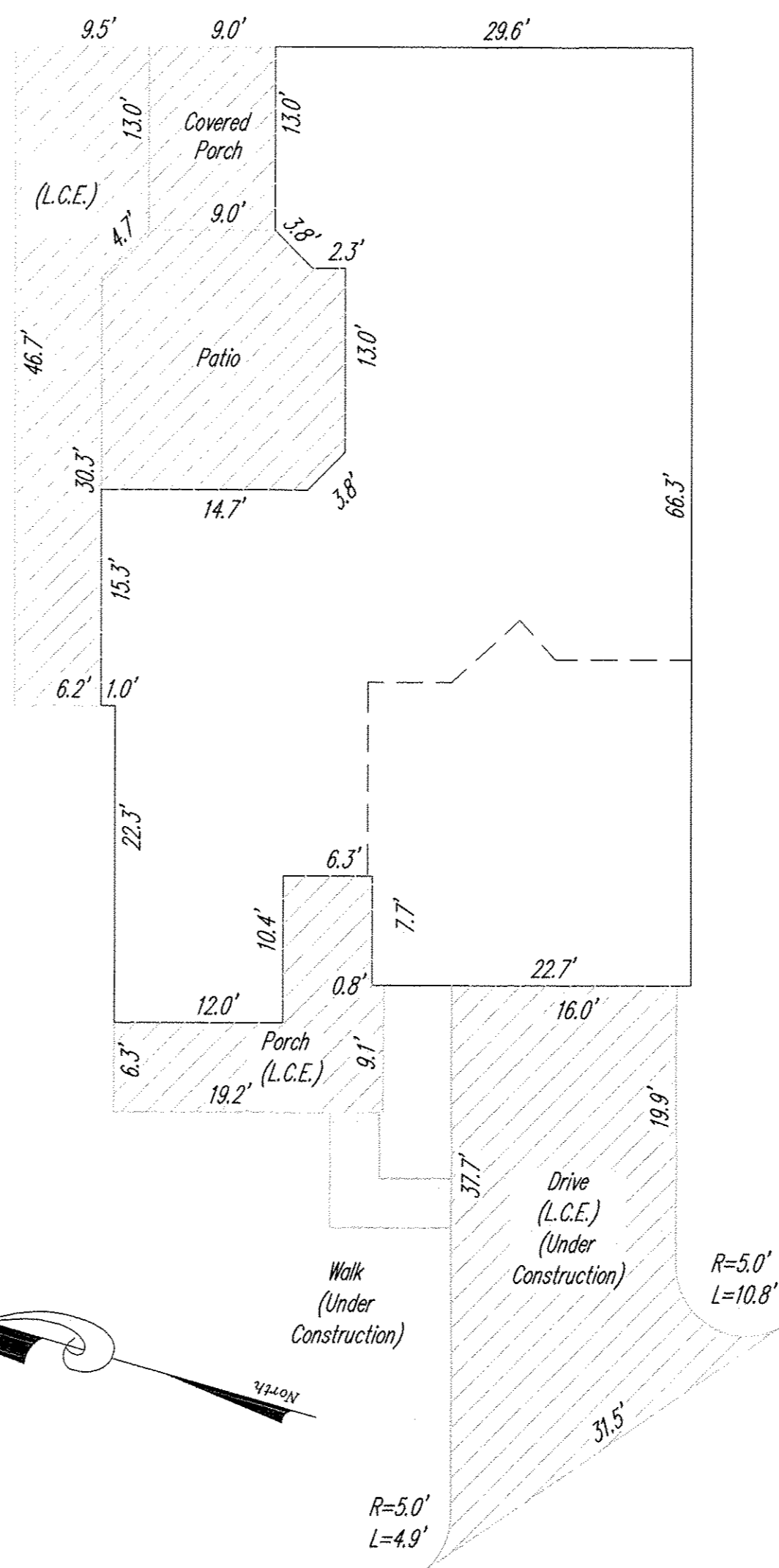
"D" ELEVATION FOR UNIT 550
Bonus Room



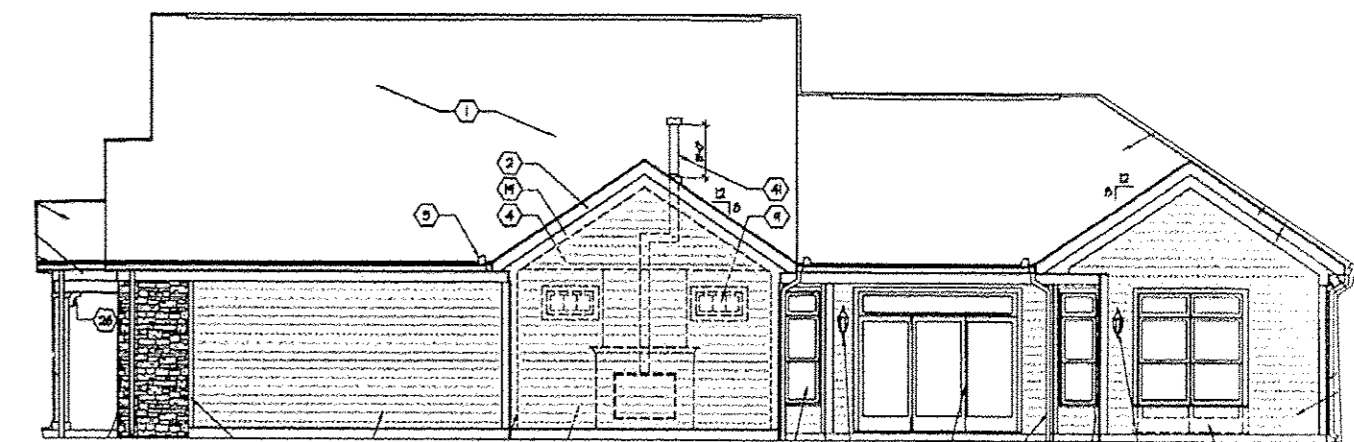
SCREENED PORCH OPTION ELEVATION FOR
UNIT 550



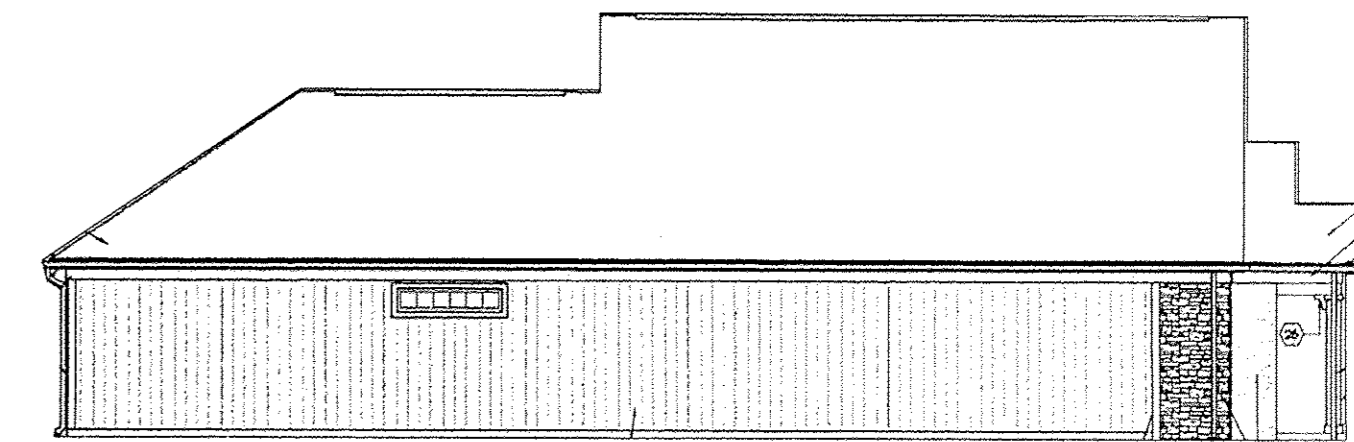
Limited Common Elements
(L.C.E.)



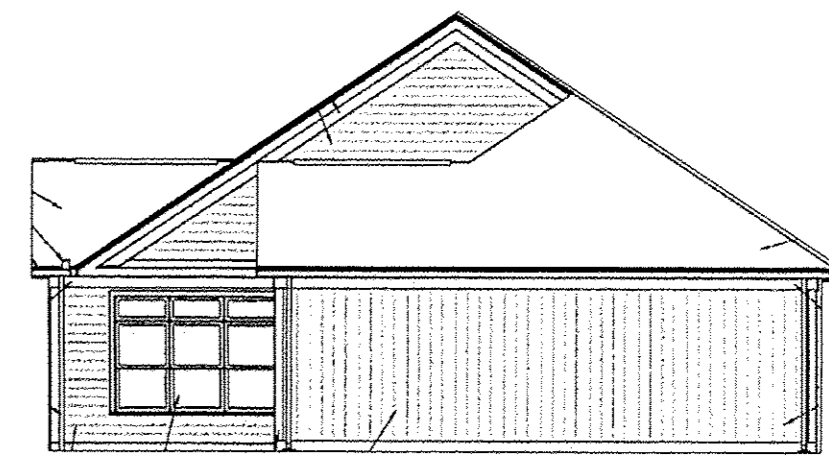
"A" ELEVATION FOR UNIT 511



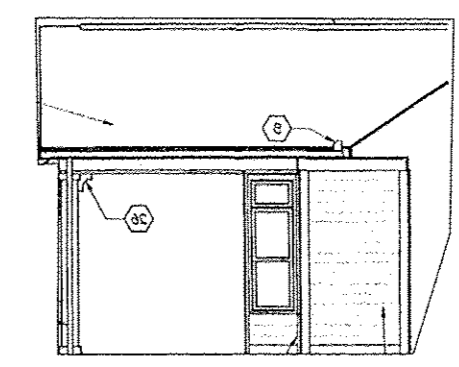
"B" ELEVATION FOR UNIT 511



"C" ELEVATION FOR UNIT 511



"D" ELEVATION FOR UNIT 511



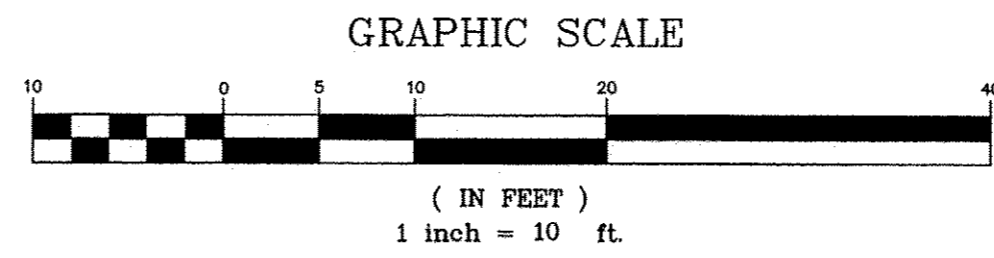
"A" ELEVATION FOR UNIT 511
Covered Porch Option

"Portico"
W/SCREENED PORCH
UNIT 550
(SLAB)
FIN. FL. 639.02
GARAGE FL. 638.35
ROOF PEAK 663.03

NOTE: ELEVATIONS FOR UNIT 511 TAKEN
FROM PAGE A-606 OF PLANS PREPARED
BY DEAN WENZ ARCHITECTS
DATED 04/28/2010

NOTE: ELEVATIONS FOR UNIT 550 TAKEN
FROM PAGE A-201 OF PLANS PREPARED
BY DEAN WENZ ARCHITECTS
DATED 08/11/2010

"Portico"
UNIT 511
WITH BONUS SUITE
(SLAB)
FIN. FL. 638.13
GARAGE FL. 637.47
ROOF PEAK 662.14



REV. No.		DATE	BY	CHK'D	DATE: 08/13/2013	QUARRY LAKES AT AMHERST CONDOMINIUM PHASE 11 PART OF ORIGINAL AMHERST TOWNSHIP LOT 21 CITY OF AMHERST - LORAIN COUNTY - OHIO		POLARIS ENGINEERING & SURVEYING, INC. 34600 CHARDON ROAD - SUITE D WILLOUGHBY HILLS, OHIO 44094 (440) 944-4433 (440) 944-3722 (Fax) www.polaris-es.com	DECLARATION OF CONDOMINIUM PHASE 11		CONTRACT No.	
					07-013							
					SHEET						OF	
					03						03	