

LOR-254-0.01

LORAIN COUNTY
 ELYRIA & SHEFFIELD TOWNSHIP
 ELYRIA TOWNSHIP LOT NO. 12 & 13
 SHEFFIELD TOWNSHIP LOT NO. 75, 76 & 109
 T. 6 & 7 N., R. 17 W.

BASIS FOR BEARINGS:

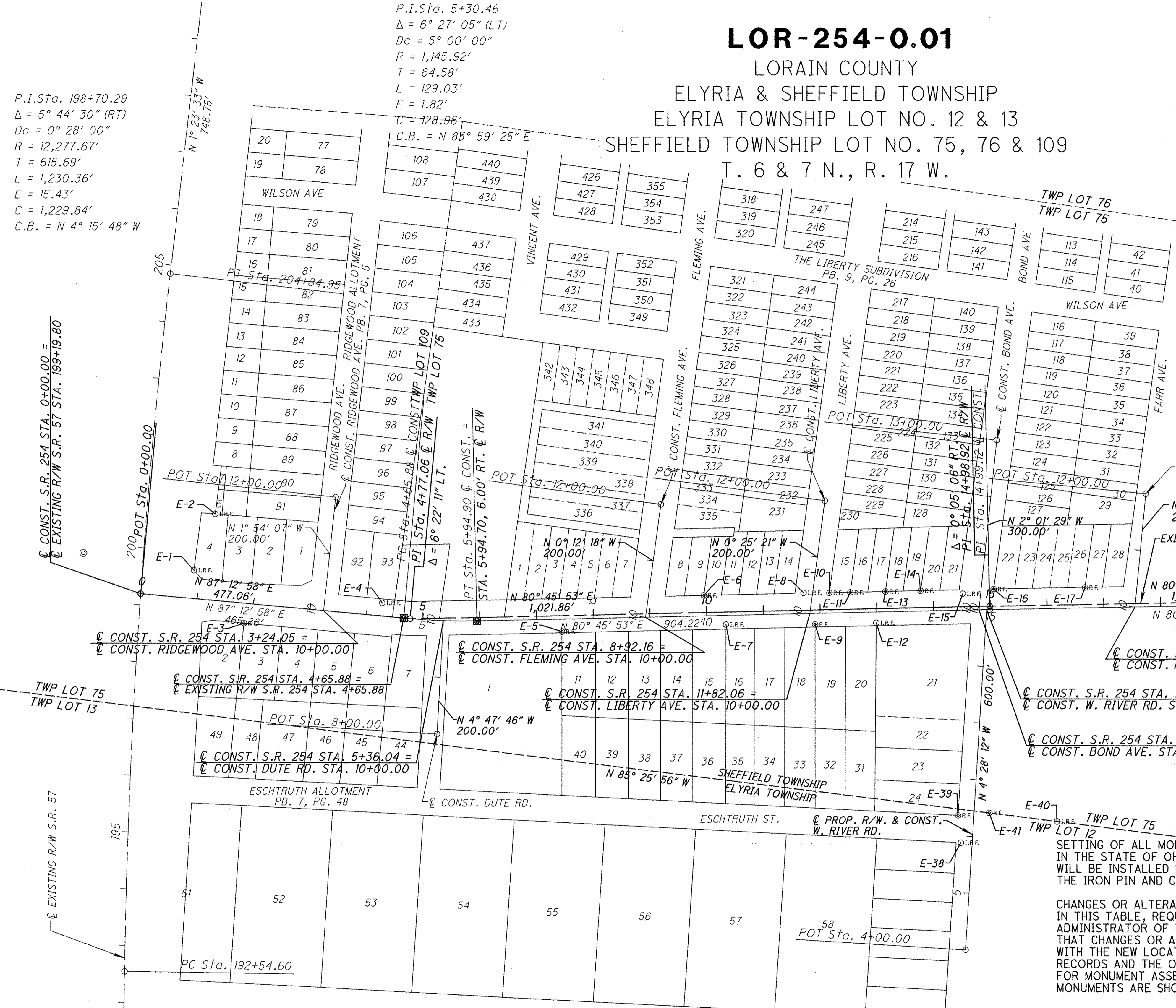
ALL BEARINGS SHOWN ARE FOR PROJECT USE ONLY AND ARE FROM THE OHIO STATE PLANE COORDINATE SYSTEM, NORTH ZONE, NAD83 (CORS96). AS ESTABLISHED BY GPS MEASUREMENTS IN 2012.

NOTE: ALL STATIONING AND OFFSET REFERENCES IS REFERENCED FROM THE EXISTING CENTERLINE OF RIGHT OF WAY FOR S.R. 254

NOTE: THE EXISTING R/W WIDTH AND LOCATION WERE DETERMINED USING DOCUMENTS ON FILE FROM THE LORAIN COUNTY ENGINEER'S OFFICE, RIDGEWOOD ALLOTMENT, ESCHTRUTH ALLOTMENT RECORDED IN VOL. 7 PG. 48, THE LIBERTY SUBDIVISION RECORDED IN VOL 9 PG. 26, AND THE FOLLOWING PLANS ON FILE AT THE OHIO DEPARTMENT OF TRANSPORTATION DISTRICT 3:

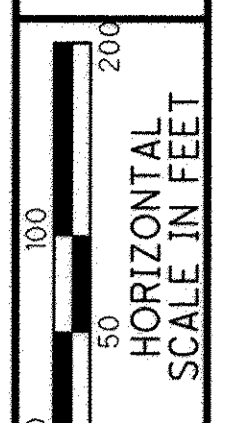
LOR-254-4.61-5.87 (0.00-0.11)
 LOR-254-1.250 (0.78)

- A - 11+71.36, 30.67' LT.
- B - 12+16.99, 29.64' LT.
- C - 12+53.95, 29.62' LT.
- D - 13+15.93, 29.58' LT.
- E - 13+77.94, 29.59' LT.



P.I. Sta. 198+70.29
 $\Delta = 5^\circ 44' 30''$ (RT)
 $D_c = 0^\circ 28' 00''$
 $R = 12,277.67'$
 $T = 615.69'$
 $L = 1,230.36'$
 $E = 15.43'$
 $C = 1,229.84'$
 $C.B. = N 4^\circ 15' 48'' W$

P.I. Sta. 5+30.46
 $\Delta = 6^\circ 27' 05''$ (LT)
 $D_c = 5^\circ 00' 00''$
 $R = 1,145.92'$
 $T = 64.58'$
 $L = 129.03'$
 $E = 1.82'$
 $C = 128.96'$
 $C.B. = N 88^\circ 59' 25'' E$



R/W DESIGNER BER
 PID NO. 83793
 R/W REVIEWER RFM

CENTERLINE PLAT

LOR-254-0.01

1 / 4
 2 / 34

MATCHLINE STA. 25+00.00 (SEE SHEET 3)

Doc ID: 017573210001 Type: OFF
 Kind: PLAT
 Recorded: 07/17/2018 at 01:46:01 PM
 Fee Amt: \$345.00 Page 1 of 1
 Lorain County, Ohio
 Judith H. Medick County Recorder
 File # 2013-0470359

ODOT
 241 STANFORD PKWY
 ATT: MARY LOU
 FINDLAY, OH 45840
 Plat vol. 98
 pgs. 90, 91, 92, 93

TRANSFERRED
 IN COMPLIANCE WITH SEC. 319-202
 OHIO REV. CODE
 JUL 11 2018
 J. CRAIG SNODGRASS, CPA, CGFM
 LORAIN COUNTY AUDITOR

SURVEYORS SEAL



SETTING OF ALL MONUMENTS SHALL BE PERFORMED BY A SURVEYOR REGISTERED IN THE STATE OF OHIO. THE MONUMENT ASSEMBLIES AND REFERENCE MONUMENTS WILL BE INSTALLED BY THE CONTRACTOR AT THE TIME OF CONSTRUCTION. THE IRON PIN AND CAP IS TO BE INSTALLED BY THE CONTRACTOR'S SURVEYOR.

CHANGES OR ALTERATIONS TO THE LOCATION OF ANY MONUMENTS SHOWN IN THIS TABLE, REQUIRE PRIOR APPROVAL FROM THE DISTRICT REAL ESTATE ADMINISTRATOR OF THE OHIO DEPARTMENT OF TRANSPORTATION. IN THE EVENT THAT CHANGES OR ALTERATIONS ARE APPROVED, A REVISED CENTERLINE PLAT WITH THE NEW LOCATIONS SHALL BE RECORDED IN THE APPLICABLE COUNTY RECORDS AND THE OHIO DEPARTMENT OF TRANSPORTATION. SPECIFICATIONS FOR MONUMENT ASSEMBLIES, REFERENCE MONUMENTS AND RIGHT OF WAY MONUMENTS ARE SHOWN ON STANDARD CONSTRUCTION DRAWING RM-1.1.

I, RICHARD F. MATHIAS, P. S. have conducted a survey of the existing conditions for the Ohio Department of Transportation on March 5, 2012. The results of that survey are contained herein. The horizontal coordinates expressed herein are based on the Ohio State Plane Coordinate System, NORTH Zone on NAD83 (CORS96) datum. The Project Coordinates (US Survey feet) are relative to State Plane Grid Coordinates by a unitless Project Adjustment Factor multiplier of 1.000074540. As a part of this project I have reestablished the locations of the existing property lines and centerline of existing Right of Way for property takes contained herein. All of my work contained herein was conducted in accordance with Ohio Administrative Code 4733-37 commonly known as "A Minimum Standards for Boundary Surveys in the State of Ohio" unless noted. The words I and my as used herein are to mean either myself or someone working under my direct supervision.

Richard F. Mathias
 RICHARD F. MATHIAS, Professional Land Surveyor No. 7798,
 Date: 11-20-12

NOTE: SEE SHEET 3 FOR CONTROL POINTS
 SEE SHEET 4 FOR PROPOSED MONUMENT TABLE
 SEE SHEET 5 FOR EXISTING MONUMENT TABLE

MONUMENT LEGEND

- EXISTING R/W MONUMENT BOX
- PROPOSED R/W MONUMENT BOX
- RAILROAD SPIKE FOUND
- IRON PIN FOUND
- IRON PIPE FOUND

RECEIVED _____, 20____
 RECORDED _____, 20____
 BOOK _____ PAGE _____
 COUNTY RECORDER

83793RC001.DGN SHEET 1

LOR-254-0.01

LORAIN COUNTY ELYRIA & SHEFFIELD TOWNSHIP ELYRIA TOWNSHIP LOT NO. 12 & 13 SHEFFIELD TOWNSHIP LOT NO. 75, 76 & 109 T. 6 & 7 N., R. 17 W.

SETTING OF ALL MONUMENTS SHALL BE PERFORMED BY A SURVEYOR REGISTERED IN THE STATE OF OHIO. THE MONUMENT ASSEMBLIES AND REFERENCE MONUMENTS WILL BE INSTALLED BY THE CONTRACTOR AT THE TIME OF CONSTRUCTION. THE IRON PIN AND CAP IS TO BE INSTALLED BY THE CONTRACTOR'S SURVEYOR.

CHANGES OR ALTERATIONS TO THE LOCATION OF ANY MONUMENTS SHOWN IN THIS TABLE, REQUIRE PRIOR APPROVAL FROM THE DISTRICT REAL ESTATE ADMINISTRATOR OF THE OHIO DEPARTMENT OF TRANSPORTATION. IN THE EVENT THAT CHANGES OR ALTERATIONS ARE APPROVED, A REVISED CENTERLINE PLAT WITH THE NEW LOCATIONS SHALL BE RECORDED IN THE APPLICABLE COUNTY RECORDS AND THE OHIO DEPARTMENT OF TRANSPORTATION. SPECIFICATIONS FOR MONUMENT ASSEMBLIES, REFERENCE MONUMENTS AND RIGHT OF WAY MONUMENTS ARE SHOWN ON STANDARD CONSTRUCTION DRAWING RM-1.1.

BASIS FOR BEARINGS:

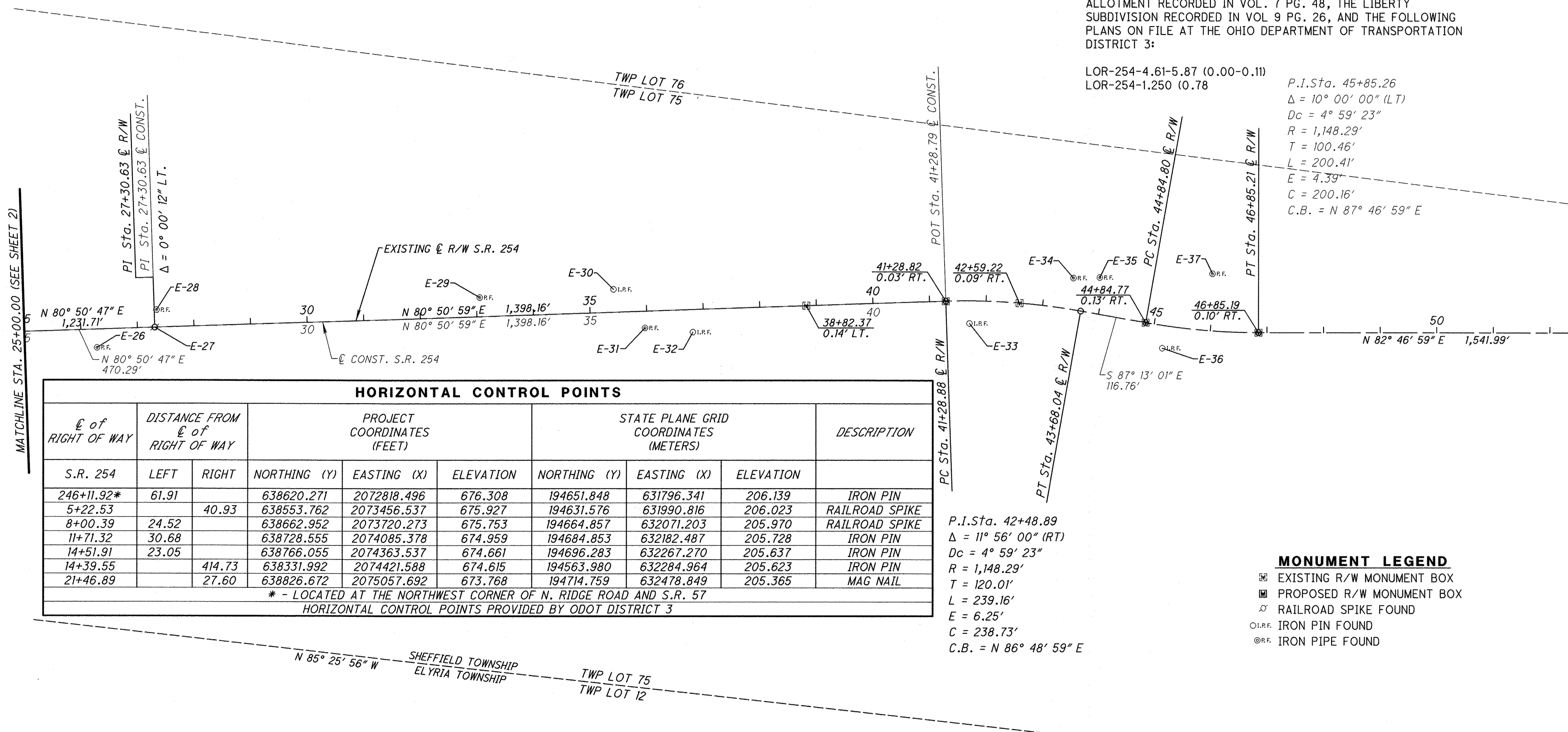
ALL BEARINGS SHOWN ARE FOR PROJECT USE ONLY AND ARE FROM THE OHIO STATE PLANE COORDINATE SYSTEM, NORTH ZONE, NAD83 (CORS96). AS ESTABLISHED BY GPS MEASUREMENTS IN 2012.

NOTE: ALL STATIONING AND OFFSET REFERENCES IS REFERENCED FROM THE EXISTING CENTERLINE OF RIGHT OF WAY FOR S.R. 254

NOTE: THE EXISTING R/W WIDTH AND LOCATION WERE DETERMINED USING DOCUMENTS ON FILE FROM THE LORAIN COUNTY ENGINEER'S OFFICE, RIDGEWOOD ALLOTMENT, ESCHTRUTH ALLOTMENT RECORDED IN VOL. 7 PG. 48, THE LIBERTY SUBDIVISION RECORDED IN VOL 9 PG. 26, AND THE FOLLOWING PLANS ON FILE AT THE OHIO DEPARTMENT OF TRANSPORTATION DISTRICT 3:

LOR-254-4.61-5.87 (0.00-0.11)
LOR-254-1.250 (0.78)

P.I. Sta. 45+85.26
 $\Delta = 10^\circ 00' 00''$ (LT)
 $D_c = 4^\circ 59' 23''$
 $R = 1,148.29'$
 $T = 100.46'$
 $L = 200.41'$
 $E = 4.39'$
 $C = 200.16'$
C.B. = $N 87^\circ 46' 59'' E$



HORIZONTAL CONTROL POINTS

E of RIGHT OF WAY	DISTANCE FROM E of RIGHT OF WAY		PROJECT COORDINATES (FEET)			STATE PLANE GRID COORDINATES (METERS)			DESCRIPTION
	LEFT	RIGHT	NORTHING (Y)	EASTING (X)	ELEVATION	NORTHING (Y)	EASTING (X)	ELEVATION	
S.R. 254									
246+11.92*	61.91		638620.271	2072818.496	676.308	194651.848	631796.341	206.139	IRON PIN
5+22.53		40.93	638553.762	2073456.537	675.927	194631.576	631990.816	206.023	RAILROAD SPIKE
8+00.39	24.52		638662.952	2073720.273	675.753	194664.857	632071.203	205.970	RAILROAD SPIKE
11+71.32	30.68		638728.555	2074085.378	674.959	194684.853	632182.487	205.728	IRON PIN
14+51.91	23.05		638766.055	2074363.537	674.661	194696.283	632267.270	205.637	IRON PIN
14+39.55		414.73	638331.992	2074421.588	674.615	194563.980	632284.964	205.623	IRON PIN
21+46.89		27.60	638826.672	2075057.692	673.768	194714.759	632478.849	205.365	MAG NAIL

* - LOCATED AT THE NORTHWEST CORNER OF N. RIDGE ROAD AND S.R. 57
HORIZONTAL CONTROL POINTS PROVIDED BY ODOT DISTRICT 3

P.I. Sta. 42+48.89
 $\Delta = 11^\circ 56' 00''$ (RT)
 $D_c = 4^\circ 59' 23''$
 $R = 1,148.29'$
 $T = 120.01'$
 $L = 239.16'$
 $E = 6.25'$
 $C = 238.73'$
C.B. = $N 86^\circ 48' 59'' E$

MONUMENT LEGEND

- ☐ EXISTING R/W MONUMENT BOX
- ☐ PROPOSED R/W MONUMENT BOX
- ⊙ RAILROAD SPIKE FOUND
- ⊙ I.P.F. IRON PIN FOUND
- ⊙ R.P.F. IRON PIPE FOUND

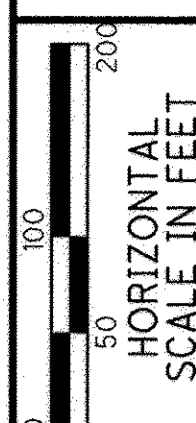
NOTE: SEE SHEET 4 FOR PROPOSED MONUMENT TABLE
SEE SHEET 5 FOR EXISTING MONUMENT TABLE

I, RICHARD F. MATHIAS, P. S. have conducted a survey of the existing conditions for the Ohio Department of Transportation on March 5, 2012. The results of that survey are contained herein. The horizontal coordinates expressed herein are based on the Ohio State Plane Coordinate System, NORTH Zone on NAD83 (CORS96) datum. The Project Coordinates (US Survey feet) are relative to State Plane Grid Coordinates by a UNITLESS Project Adjustment Factor multiplier of 1.000074540. As a part of this project I have reestablished the locations of the existing property lines and centerline of existing Right of Way for property takes contained herein. All of my work contained herein was conducted in accordance with Ohio Administrative Code 4733-37 commonly known as "A Minimum Standards for Boundary Surveys in the State of Ohio" unless noted. The words I and my as used herein are to mean either myself or someone working under my direct supervision.

Richard F. Mathias
RICHARD F. MATHIAS, Professional Land Surveyor No. 7798,

11-20-12
Date:

SURVEYORS SEAL



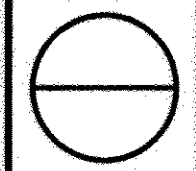
PID NO. 83793

R/W DESIGNER BER R/W REVIEWER RFM

CENTERLINE PLAT

LOR-254-0.01

2 / 4
3 / 34



83793RC001.DGN SHEET 2

RECEIVED _____, 20____
RECORDED _____, 20____
BOOK _____ PAGE _____
COUNTY RECORDER

MONUMENTS TABLE

CALL NO.	SHEET NO.	E of RIGHT OF WAY	DISTANCE FROM E of RIGHT OF WAY		PROJECT COORDINATES (FEET)		STATE PLANE GRID COORDINATES (METERS)		MONUMENTS TO BE SET DURING CONSTRUCTION		R/W MON. EXPECTED TO BE DISTURBED & RESET ITEM 604	DESCRIPTION
			S.R. 254	LEFT	RIGHT	NORTHING (Y)	EASTING (X)	NORTHING (Y)	EASTING (X)	MON. ASSY.		
P1	14	1+50.07		40.00	638531.0289	2073080.454	194624.6468	631876.1857			1	3/4" x 30" REBAR WITH 2" ALUMINUM CAP STAMPED "ODOT R/W P.S. 7798"
P2	14	1+86.27		40.00	638532.7868	2073116.612	194625.1826	631887.2068			1	3/4" x 30" REBAR WITH 2" ALUMINUM CAP STAMPED "ODOT R/W P.S. 7798"
P3	14	1+93.33	40.00		638613.0300	2073119.776	194649.6412	631888.1711			1	3/4" x 30" REBAR WITH 2" ALUMINUM CAP STAMPED "ODOT R/W P.S. 7798"
P4	14	2+45.16	40.00		638615.5466	2073171.543	194650.4078	631903.9498			1	3/4" x 30" REBAR WITH 2" ALUMINUM CAP STAMPED "ODOT R/W P.S. 7798"
P5	14	2+53.28		40.00	638536.0415	2073183.541	194626.1746	631907.6068			1	3/4" x 30" REBAR WITH 2" ALUMINUM CAP STAMPED "ODOT R/W P.S. 7798"
P6	14	2+75.00	40.00		638616.9955	2073201.344	194650.8494	631913.0331			1	3/4" x 30" REBAR WITH 2" ALUMINUM CAP STAMPED "ODOT R/W P.S. 7798"
P7	14	3+17.38		40.00	638539.1543	2073247.557	194627.1234	631927.119			1	3/4" x 30" REBAR WITH 2" ALUMINUM CAP STAMPED "ODOT R/W P.S. 7798"
P8	14	3+48.58	60.00		638640.5437	2073273.856	194658.027	631935.135			1	3/4" x 30" REBAR WITH 2" ALUMINUM CAP STAMPED "ODOT R/W P.S. 7798"
P9	14	3+75.00	40.00		638621.8521	2073301.218	194652.3298	631943.4749			1	3/4" x 30" REBAR WITH 2" ALUMINUM CAP STAMPED "ODOT R/W P.S. 7798"
P10	14	3+82.42		35.00	638547.3067	2073312.273	194629.6083	631946.8445			1	3/4" x 30" REBAR WITH 2" ALUMINUM CAP STAMPED "ODOT R/W P.S. 7798"
P11	14	4+47.92		35.00	638550.4884	2073377.689	194630.5781	631966.7834			1	3/4" x 30" REBAR WITH 2" ALUMINUM CAP STAMPED "ODOT R/W P.S. 7798"
P12	14	4+65.88	E	E	638586.3158	2073393.922	194641.4983	631971.7312	1			MONUMENT ASSEMBLY
P13	14	4+77.06		35.00	638551.9033	2073406.789	194631.0093	631975.6531			1	3/4" x 30" REBAR WITH 2" ALUMINUM CAP STAMPED "ODOT R/W P.S. 7798"
P14	16	5+04.04		45.00	638546.7757	2073438.94	194629.4464	631985.4526			1	3/4" x 30" REBAR WITH 2" ALUMINUM CAP STAMPED "ODOT R/W P.S. 7798"
P15	16	5+34.43	34.23		638629.8515	638629.8515	194654.768	631990.7204			1	3/4" x 30" REBAR WITH 2" ALUMINUM CAP STAMPED "ODOT R/W P.S. 7798"
P16	16	5+70.00		40.00	638562.2956	2073503.24	194634.1769	632005.0513			1	3/4" x 30" REBAR WITH 2" ALUMINUM CAP STAMPED "ODOT R/W P.S. 7798"
P17	16	5+75.00	30.00		638632.1864	2073496.942	194655.4796	632003.1315			1	3/4" x 30" REBAR WITH 2" ALUMINUM CAP STAMPED "ODOT R/W P.S. 7798"
P18	16	5+94.70		6.00	638599.8168	2073522.163	194645.6134	632010.8189	1			MONUMENT ASSEMBLY
P19		NOT USED										
P20		NOT USED										
P21	16	7+44.05		40.00	638590.2265	2073675.016	194642.6902	632057.4088			1	3/4" x 30" REBAR WITH 2" ALUMINUM CAP STAMPED "ODOT R/W P.S. 7798"
P22	16	8+03.14		40.00	638599.7088	2073733.337	194645.5804	632075.185			1	3/4" x 30" REBAR WITH 2" ALUMINUM CAP STAMPED "ODOT R/W P.S. 7798"
P23	16	8+61.13		40.00	638609.0151	2073790.571	194648.417	632092.6299			1	3/4" x 30" REBAR WITH 2" ALUMINUM CAP STAMPED "ODOT R/W P.S. 7798"
P24	16	9+18.12		40.00	638618.1604	2073846.818	194651.2045	632109.7742			1	3/4" x 30" REBAR WITH 2" ALUMINUM CAP STAMPED "ODOT R/W P.S. 7798"
P25	16	9+29.76	45.00		638703.922	2073844.675	194677.3447	632109.1208			1	3/4" x 30" REBAR WITH 2" ALUMINUM CAP STAMPED "ODOT R/W P.S. 7798"
P26	16	9+50.00	30.00		638692.3649	2073867.053	194673.8221	632115.9417			1	3/4" x 30" REBAR WITH 2" ALUMINUM CAP STAMPED "ODOT R/W P.S. 7798"
P27	16	9+74.00		45.00	638622.1931	2073902.771	194652.4337	632126.8287			1	3/4" x 30" REBAR WITH 2" ALUMINUM CAP STAMPED "ODOT R/W P.S. 7798"
P28	16	9+74.11		40.00	638627.1457	2073902.079	194653.9432	632126.6178			1	3/4" x 30" REBAR WITH 2" ALUMINUM CAP STAMPED "ODOT R/W P.S. 7798"
P29	18	10+32.95		45.00	638631.6544	2073960.955	194655.3175	632144.5631			1	3/4" x 30" REBAR WITH 2" ALUMINUM CAP STAMPED "ODOT R/W P.S. 7798"
P30	18	10+82.98		45.00	638639.6828	2074010.331	194657.7646	632159.613			1	3/4" x 30" REBAR WITH 2" ALUMINUM CAP STAMPED "ODOT R/W P.S. 7798"
P31	18	11+36.97		45.00	638648.3462	2074063.617	194660.4051	632175.8546			1	3/4" x 30" REBAR WITH 2" ALUMINUM CAP STAMPED "ODOT R/W P.S. 7798"
P32	18	11+90.34		45.00	638656.9125	2074116.298	194663.0162	632191.9119			1	3/4" x 30" REBAR WITH 2" ALUMINUM CAP STAMPED "ODOT R/W P.S. 7798"
P33	18	12+18.65	40.00		638745.3459	2074130.592	194689.9707	632196.2687			1	3/4" x 30" REBAR WITH 2" ALUMINUM CAP STAMPED "ODOT R/W P.S. 7798"
P34	18	12+25.00	29.65		638736.1536	2074138.524	194687.1689	632198.6862			1	3/4" x 30" REBAR WITH 2" ALUMINUM CAP STAMPED "ODOT R/W P.S. 7798"
P35	18	12+44.05		52.00	638658.6214	2074170.425	194663.5337	632208.4098			1	3/4" x 30" REBAR WITH 2" ALUMINUM CAP STAMPED "ODOT R/W P.S. 7798"
P36	18	12+97.90		52.00	638667.2637	2074223.573	194666.1712	632224.6094			1	3/4" x 30" REBAR WITH 2" ALUMINUM CAP STAMPED "ODOT R/W P.S. 7798"
P37	18	14+25.00		52.00	638687.6612	2074349.02	194672.3884	632262.8456			1	3/4" x 30" REBAR WITH 2" ALUMINUM CAP STAMPED "ODOT R/W P.S. 7798"
P38	18	14+60.16		85.00	638660.7332	2074389.018	194664.1807	632275.037			1	3/4" x 30" REBAR WITH 2" ALUMINUM CAP STAMPED "ODOT R/W P.S. 7798"
P39	18	14+98.92		6.00	638744.924	2074414.594	194689.8421	632282.8326	1			MONUMENT ASSEMBLY
P40	20	15+09.78	50.00		638801.9327	2074416.397	194707.2184	632283.3821			1	3/4" x 30" REBAR WITH 2" ALUMINUM CAP STAMPED "ODOT R/W P.S. 7798"
P41	20	15+28.16		75.00	638681.4567	2074454.423	194670.4973	632294.9725			1	3/4" x 30" REBAR WITH 2" ALUMINUM CAP STAMPED "ODOT R/W P.S. 7798"
P42	20	15+40.00	30.00		638786.9958	2074449.414	194702.6657	632293.4456			1	3/4" x 30" REBAR WITH 2" ALUMINUM CAP STAMPED "ODOT R/W P.S. 7798"
P43	20	15+60.00		42.00	638719.0989	2074480.61	194681.9706	632302.9543			1	3/4" x 30" REBAR WITH 2" ALUMINUM CAP STAMPED "ODOT R/W P.S. 7798"
P44	20	17+10.00	30.00		638814.0378	2074617.236	194710.9081	632344.598			1	3/4" x 30" REBAR WITH 2" ALUMINUM CAP STAMPED "ODOT R/W P.S. 7798"
P45	20	17+27.95		42.00	638745.8149	2074646.406	194690.1137	632353.489			1	3/4" x 30" REBAR WITH 2" ALUMINUM CAP STAMPED "ODOT R/W P.S. 7798"
P46	20	17+38.58	50.00		638838.3280	2074642.269	194718.3117	632352.228			1	3/4" x 30" REBAR WITH 2" ALUMINUM CAP STAMPED "ODOT R/W P.S. 7798"
P47	20	17+87.21	30.00		638826.3199	2074693.460	194714.6517	632367.8312			1	3/4" x 30" REBAR WITH 2" ALUMINUM CAP STAMPED "ODOT R/W P.S. 7798"
P48	20	18+60.19	30.00		638837.9270	207476.688	194718.1895	63239.0209			1	3/4" x 30" REBAR WITH 2" ALUMINUM CAP STAMPED "ODOT R/W P.S. 7798"
P49	20	19+22.40		42.00	638776.7456	2074838.366	194699.5414	632411.9984			1	3/4" x 30" REBAR WITH 2" ALUMINUM CAP STAMPED "ODOT R/W P.S. 7798"
P50	20	19+46.43	30.00		638851.6460	2074850.6396	194707.8575	632415.7395			1	3/4" x 30" REBAR WITH 2" ALUMINUM CAP STAMPED "ODOT R/W P.S. 7798"
P51	22	20+26.89	30.00		638864.445	638864.445	194726.2722	632439.9496			1	3/4" x 30" REBAR WITH 2" ALUMINUM CAP STAMPED "ODOT R/W P.S. 7798"
P52	22	20+38.31		42.00	638795.1842	2074952.796	194705.1615	632446.8769			1	3/4" x 30" REBAR WITH 2" ALUMINUM CAP STAMPED "ODOT R/W P.S. 7798"
P53	22	20+90.68	35.00		638879.5269	2074992.244	194730.8692	632458.9007			1	3/4" x 30" REBAR WITH 2" ALUMINUM CAP STAMPED "ODOT R/W P.S. 7798"
P54	22	21+34.81		6.00	638846.0714	2075042.328	194720.6719	632474.1664	1			MONUMENT ASSEMBLY
P55	22	22+36.57		30.00	638838.566	2075146.604	194718.3843	632505.9495			1	3/4" x 30" REBAR WITH 2" ALUMINUM CAP STAMPED "ODOT R/W P.S. 7798"
P56	22	22+60.00	E	E	638871.9095	2075164.967	194728.5474	632511.5468	1			MONUMENT ASSEMBLY
P57	22	23+00.00	40.00		638917.7601	2075198.092	194742.5227	632521.6431			1	3/4" x 30" REBAR WITH 2" ALUMINUM CAP STAMPED "ODOT R/W P.S. 7798"
P58	22	23+68.12	40.00		638928.5963	2075265.34	194745.8256	632542.1404			1	3/4" x 30" REBAR WITH 2" ALUMINUM CAP STAMPED "ODOT R/W P.S. 7798"
P59	22	24+13.63	40.00		638935.8337	2075310.26	194748.0315	632555.8322			1	3/4" x 30" REBAR WITH 2" ALUMINUM CAP STAMPED "ODOT R/W P.S. 7798"
P60	24	27+30.63	40.00		638986.259	2075623.201	194763.4012	632651.2167			1	3/4" x 30" REBAR WITH 2" ALUMINUM CAP STAMPED "ODOT R/W P.S. 7798"
P61	24	27+35.96	40.00		638987.1069	2075628.468	194763.6596	632652.822			1	3/4" x 30" REBAR WITH 2" ALUMINUM CAP STAMPED "ODOT R/W P.S. 7798"
P62	26	33+09.56	40.00		639078.3171	2076194.728	194791.4606	632825.4186			1	3/4" x 30" REBAR WITH 2" ALUMINUM CAP STAMPED "ODOT R/W P.S. 7798"
P63	28	35+00.00	40.00		639108.5978	2076382.728	194800.6901	632882.7211			1	3/4" x 30" REBAR WITH 2" ALUMINUM CAP STAMPED "ODOT R/W P.S. 7798"
P64	28	35+43.67	41.75		639117.2662	2076425.559	194803.3323	632895.776			1	3/4" x 30" REBAR WITH 2" ALUMINUM CAP STAMPED "ODOT R/W P.S. 7798"
P65	28	37+50.00	50.00		639158.2231	2076627.939	194815.816	632957.4615			1	3/4" x 30" REBAR WITH 2" ALUMINUM CAP STAMPED "ODOT R/W P.S. 7798"
P66	30	41+28.79	50.00		639218.4557	2077001.885	194834.1749	633071.4405			1	3/4" x 30" REBAR WITH 2" ALUMINUM CAP STAMPED "ODOT R/W P.S. 7798"
P67	30	42+31.07	50.00		639230.7227	2077107.858	194837.9139	633103.7412			1	3/4" x 30" REBAR WITH 2" ALUMINUM CAP STAMPED "ODOT R/W P.S. 7798"
P68		NOT USED										
P69	32	47+36.43		52.49	639138.8026	2077622.276	194809.8966	633260.536			1	3/4" x 30" REBAR WITH 2" ALUMINUM CAP STAMPED "ODOT R/W P.S. 7798"
		E WEST RIVER ROAD										
P70	34	6+42.60		40.00	638390.9123	2074477.135	194581.9392	632301.8952			1	3/4" x 30" REBAR WITH 2" ALUMINUM CAP STAMPED "ODOT R/W P.S. 7798"
TOTALS CARRIED TO THE GENERAL SUMMARY									5		62	

83793RC002.DGN SHEET 1

FEDERAL PROJECT NO. E080(828)

PID NO. 83793

R/W DESIGNER BER R/W REVIEWER RFM

PROPOSED MONUMENT TABLE

LOR-254-0.01

3 / 4
4 / 34

