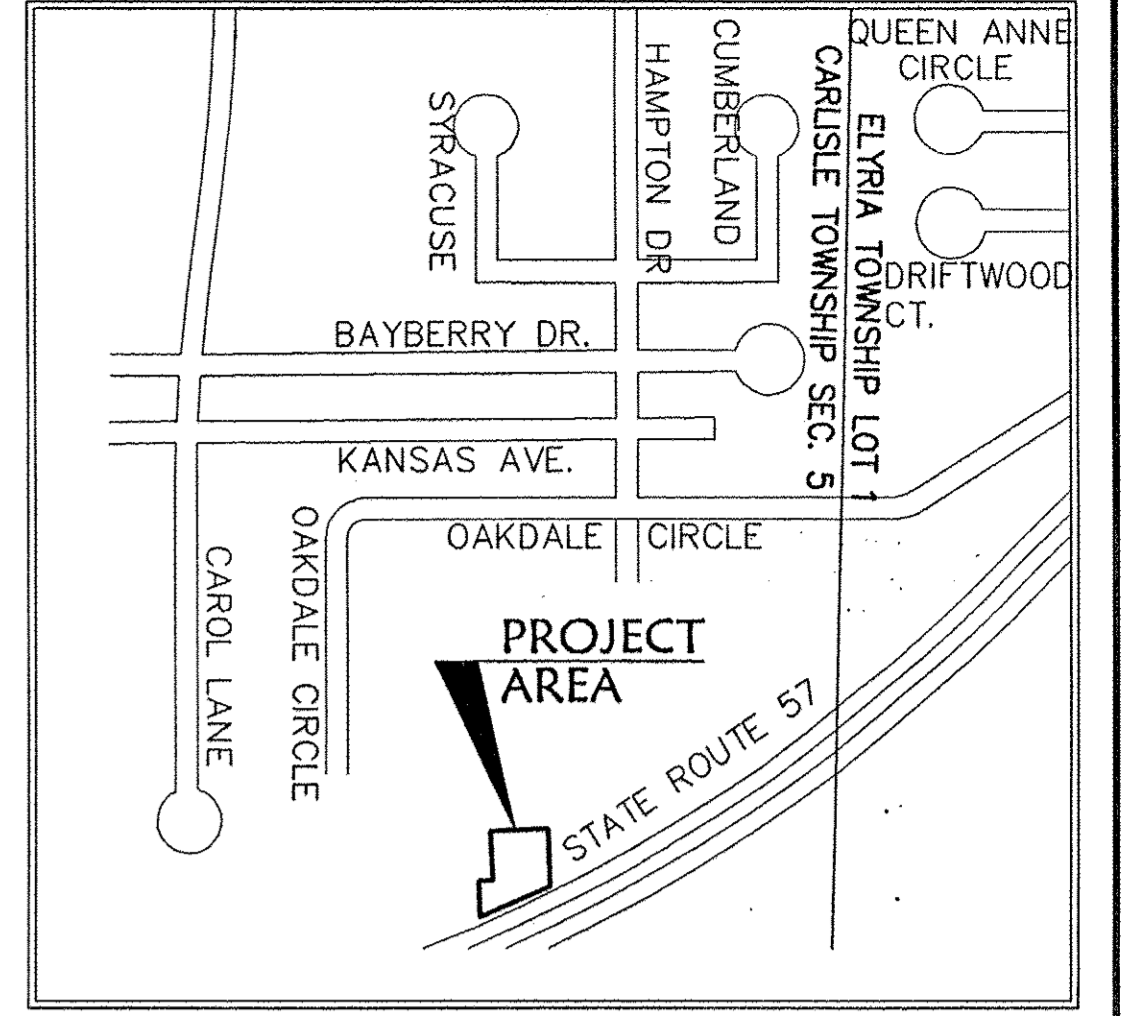
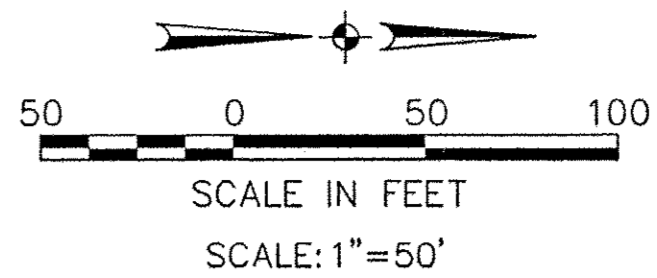
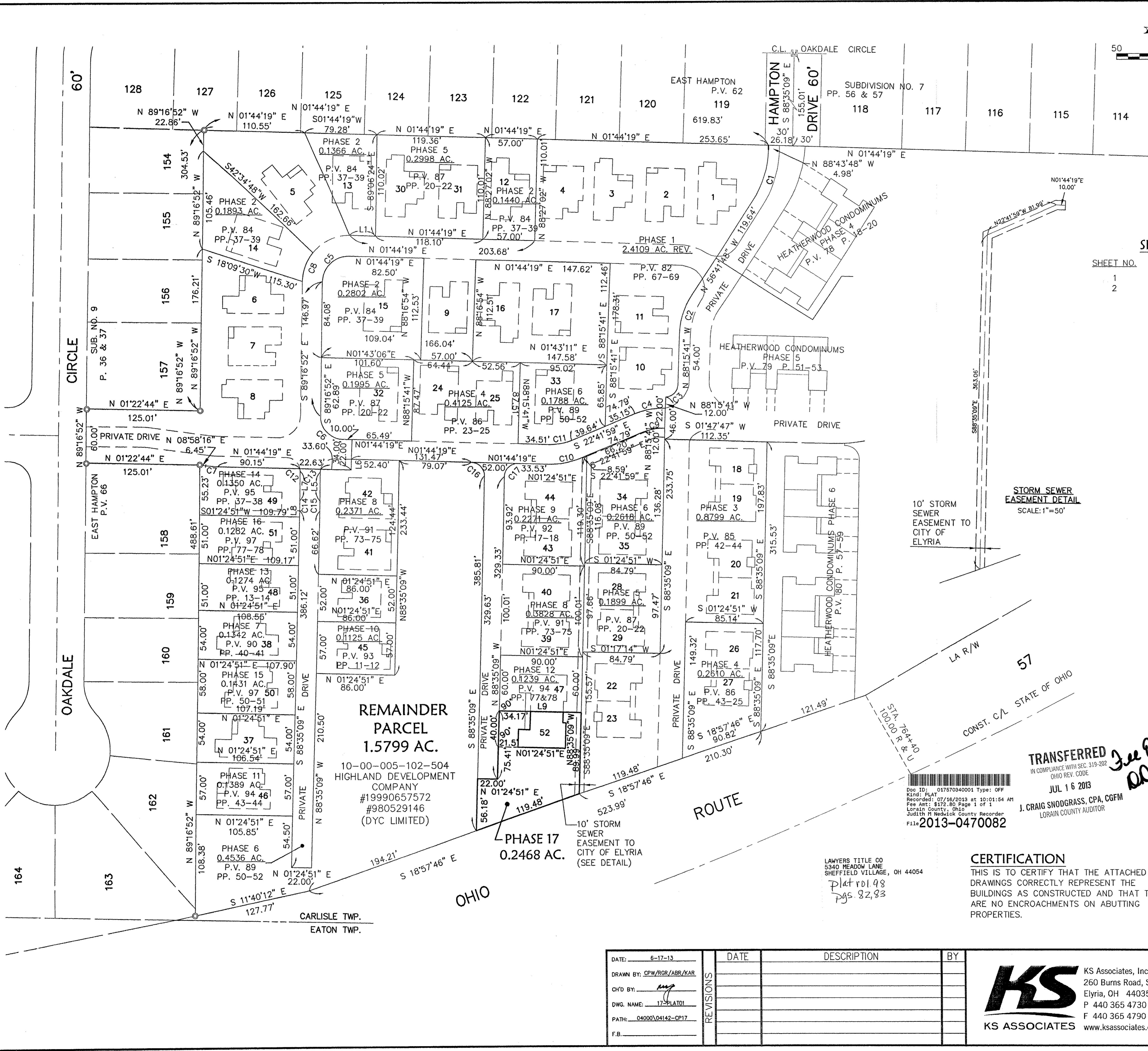


R:\04000\04142-CP17\LDOT\CONTROL\DWG\17-PLAT01.dwg 6/17/2013 3:08:12 PM EDT



SHEET INDEX

SHEET NO.	DESCRIPTION
1	SURVEY MAP
2	FLOOR & FOUNDATION PLANS & ELEVATIONS

AREA MAP - NO SCALE

BEARING SYSTEM IS TAKEN FROM THE HEATHERWOOD PROJECT.

LINE DATA

LINE	DISTANCE	BEARING
L1	28.58'	N 01°44'19" E
L2	8.29'	S 89°06'24" E
L3	3.79'	N 00°53'36" E
L4	9.11'	N 66°18'03" E
L5	31.84'	S 89°12'58" E
L6	12.00'	N 88°15'41" W
L7	32.85'	S 89°12'58" E
L8	6.62'	S 88°35'09" E
L9	90.00'	N 01°24'51" E

LEGEND

- ⊙ - IRON PIN/PIPE FOUND
- ⊕ - MONUMENT BOX FOUND
- - 5/8" CAPPED REBAR SET
- PK NAIL SET

PHASE 17 TOTAL = 0.2468 AC.

CURVE DATA

CURVE	RADIUS	LENGTH	TANGENT	DELTA	CHORD	BEARING
C1	105.63'	59.06'	30.32'	32°02'01"	58.29'	N72°42'48"W
C2	88.73'	48.88'	25.08'	31°33'53"	48.27'	S72°28'44"E
C3	13.00'	20.42'	13.00'	90°00'00"	18.38'	N43°15'41"W
C4	81.00'	34.55'	17.54'	24°26'18"	34.29'	S10°28'50"E
C5	28.00'	44.48'	28.50'	91°01'11"	39.95'	N43°46'16"W
C6	25.00'	38.82'	24.56'	88°58'49"	35.04'	S46°13'44"W
C7	125.62'	13.25'	6.63'	6°02'35"	13.24'	N04°51'23"E
C8	50.00'	34.04'	17.71'	39°00'21"	33.39'	S69°46'41"E
C9	59.00'	25.17'	12.78'	24°26'18"	24.97'	N10°28'50"W
C10	81.00'	34.55'	17.54'	24°26'18"	34.29'	S10°28'50"E
C11	59.00'	25.17'	12.78'	24°26'18"	24.97'	N10°28'50"W
C12	15.00'	2.74'	1.37'	10°26'51"	2.73'	N85°34'18"E
C13	15.00'	3.38'	1.70'	12°54'42"	3.37'	S82°45'44"E
C14	973.95'	10.88'	5.44'	00°38'24"	10.88'	S88°54'03"E
C15	1033.24'	11.12'	5.56'	00°37'00"	11.12'	S88°54'03"E
C16	15.00'	23.47'	14.91'	89°39'32"	21.15'	S46°34'35"W
C17	15.00'	23.64'	15.08'	90°18'26"	21.27'	S43°25'25"E

STORM SEWER EASEMENT DETAIL
SCALE: 1"=50'

REMAINDER PARCEL 1.5799 AC.
10-00-005-102-504
HIGHLAND DEVELOPMENT COMPANY
#19990657572
#980529146 (DYC LIMITED)

PHASE 17 0.2468 AC.

TRANSFERRED
IN COMPLIANCE WITH SEC. 319-202 OHIO REV. CODE
JUL 16 2013
J. CRAIG SNODGRASS, CPA, CGFM
LORAIN COUNTY AUDITOR

Doc ID: 01757040001 Type: OFF
Kind: PLAT
Recorded: 07/16/2013 at 10:01:54 AM
Fee Amt: \$172.80 Page 1 of 1
Lorain County, Ohio
Judith M. Nedulick County Recorder
File# 2013-0470082

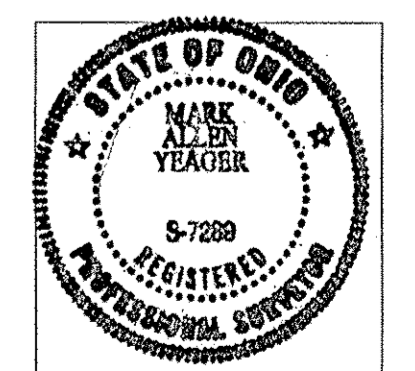
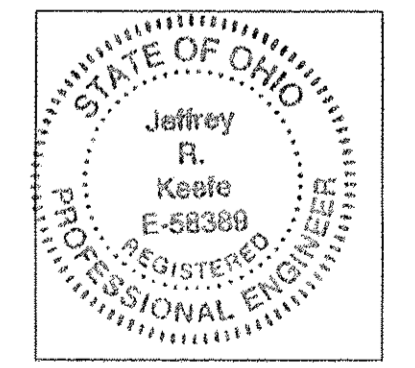
LAWYERS TITLE CO
5340 MEADOW LANE
SHEFFIELD VILLAGE, OH 44054
Plat rd1.98
pgs 82,83

CERTIFICATION

THIS IS TO CERTIFY THAT THE ATTACHED DRAWINGS CORRECTLY REPRESENT THE BUILDINGS AS CONSTRUCTED AND THAT THERE ARE NO ENCROACHMENTS ON ADJUTING PROPERTIES.

Jeffrey R. Keefe 6-18-2013
JEFFREY R. KEEFE
PROFESSIONAL ENGINEER NO. 58389

Mark A. Yeager 6/18/13
MARK A. YEAGER
PROFESSIONAL SURVEYOR NO. 7289

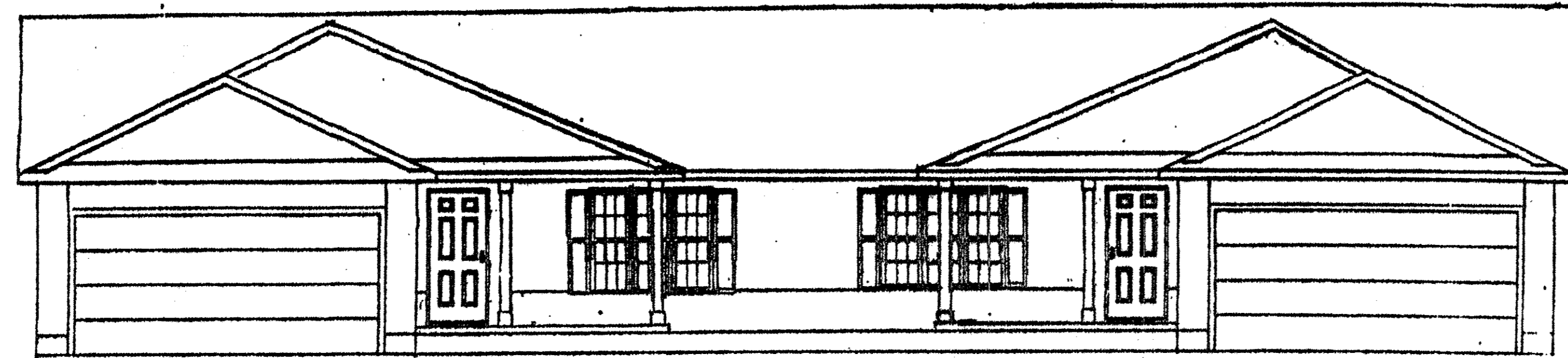
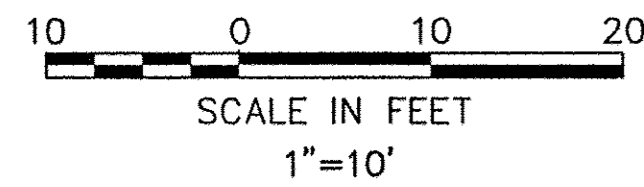


DATE	DESCRIPTION	BY
6-12-13		

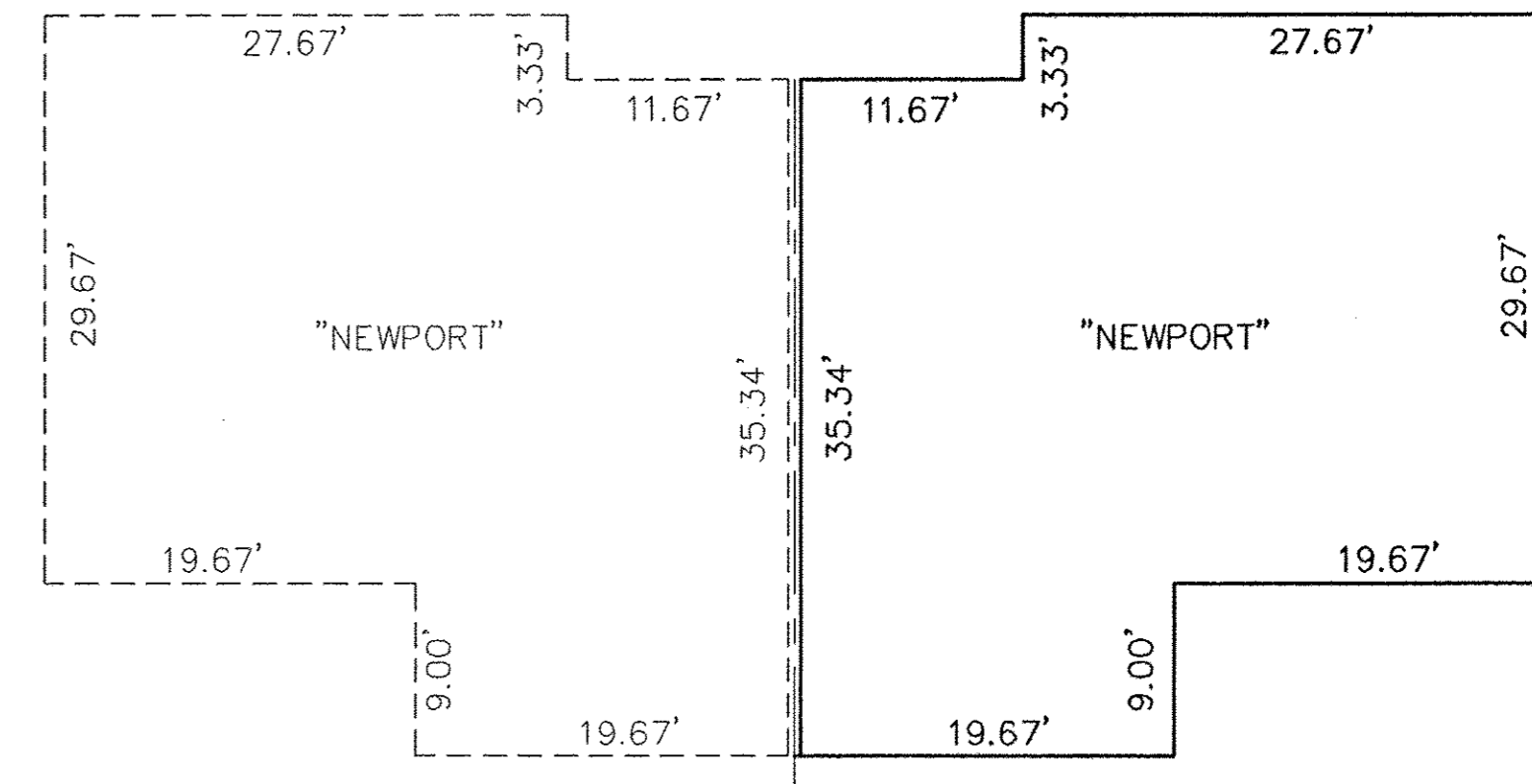
KS ASSOCIATES
KS Associates, Inc.
260 Burns Road, Suite 100
Elyria, OH 44035
P 440 365 4730
F 440 365 4790
www.ksassociates.com

CHESAPEAKE CONDOMINIUM PHASE NO. 17
PART OF ORIGINAL CARLISLE TOWNSHIP SECTION NO. 5 CITY OF ELYRIA COUNTY OF LORAIN STATE OF OHIO

SHEET 1 OF 2
JOB NO. 04142-CP17

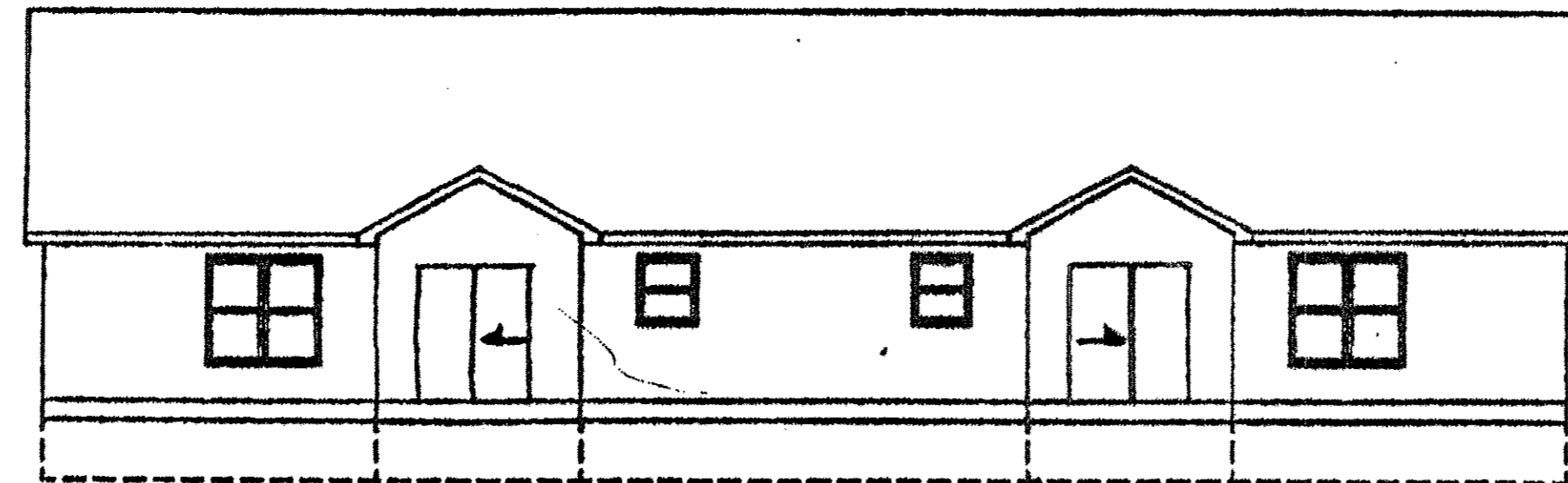


FRONT ELEVATION
NEWPORT MODEL

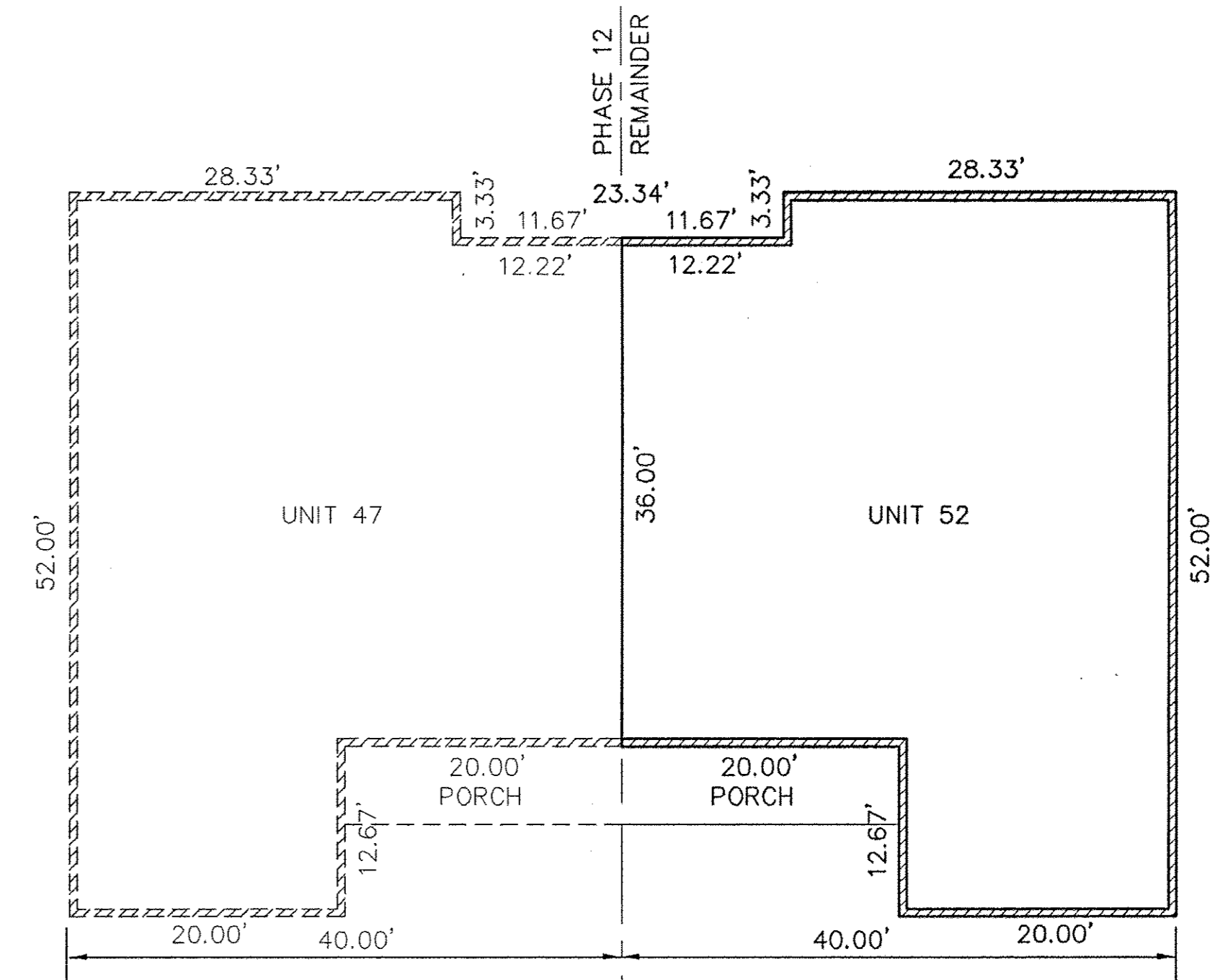


UNIT 47 UNIT 52

FIRST FLOOR PLAN
(INTERIOR DIMENSIONS)



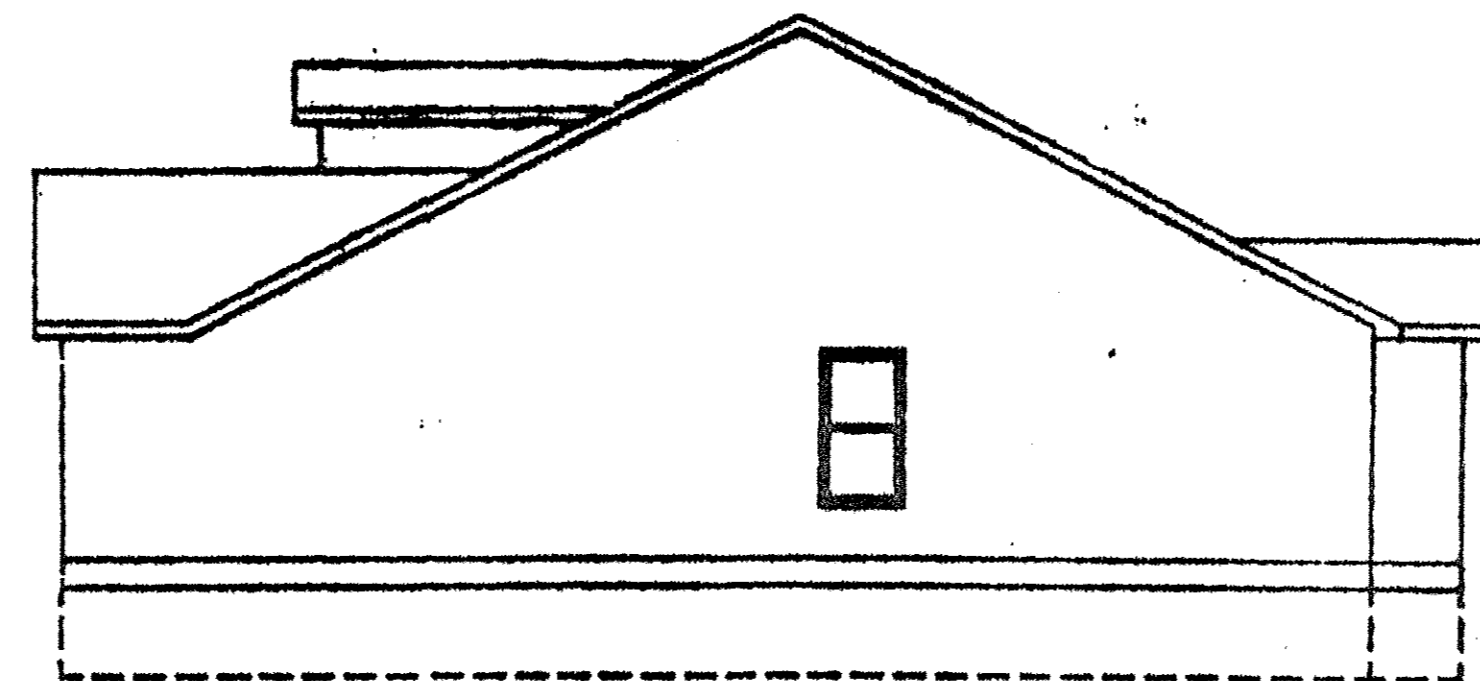
REAR ELEVATION



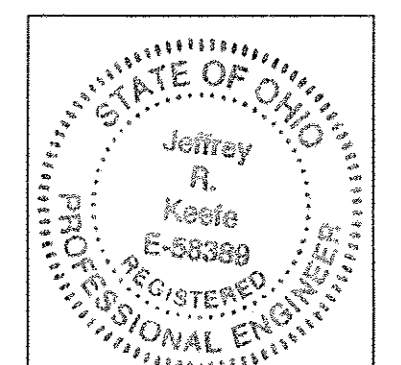
FOUNDATION PLAN
(EXTERIOR DIMENSIONS)

OWNERSHIP PERCENTAGES

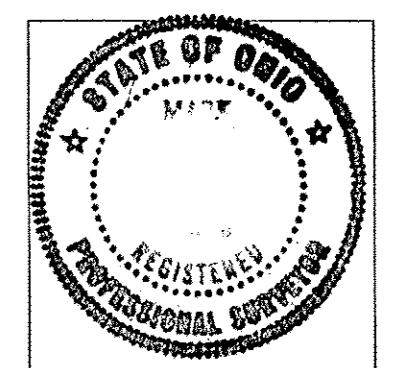
UNIT NO.	SQ. FT.	ELEV. F.F.	% OWNERSHIP
1	1427.16	748.93	1.9300
2	1645.51	749.08	2.2252
3	1427.16	749.45	1.9300
4	1637.92	749.47	2.2150
5	1427.16	749.50	1.9300
6	1427.16	749.44	1.9300
7	1645.51	749.42	2.2252
8	1427.16	749.44	1.9300
9	1645.51	749.84	2.2252
10	1637.92	749.45	2.2150
11	1645.51	748.48	2.2252
12	1427.16	749.86	1.9300
13	1645.51	749.53	2.2252
14	1645.51	749.39	2.2252
15	1645.51	749.69	2.2252
16	1427.16	749.36	1.9300
17	1645.51	749.23	2.2252
18	1154.56	749.35	1.5613
19	1305.39	749.35	1.5613
20	1154.56	749.41	1.5613
21	1154.56	749.41	1.7653
22	1305.39	750.46	1.5613
23	1154.56	750.46	2.2252
24	1645.51	749.53	1.6328
25	1207.46	749.20	1.7653
26	1305.39	749.81	1.5613
27	1154.56	749.81	1.7653
28	1305.39	750.04	1.7653
29	1305.39	750.04	1.9300
30	1427.16	749.50	2.2252
31	1645.51	749.70	2.2252
32	1645.51	749.35	2.2252
33	1645.51	749.07	1.7653
34	1305.39	749.17	1.7653
35	1305.39	749.17	1.6328
36	1207.46	749.26	1.9300
37	1427.16	749.44	1.9300
38	1427.16	749.36	1.7653
39	1305.39	749.84	1.7653
40	1305.39	749.84	2.2252
41	1645.51	749.45	1.9747
42	1460.23	749.69	1.7653
43	1305.39	749.38	1.7653
44	1305.39	749.38	1.9943
45	1474.73	749.33	1.9943
46	1474.73	749.67	1.7653
47	1305.39	749.98	1.7145
48	1267.85	749.33	1.7145
49	1267.85	749.58	2.2150
50	1637.92	749.36	1.7145
51	1267.85	749.38	1.7653
52	1305.39	749.98	1.7653
TOTAL	73948.02 S.F.		100.00%



SIDE ELEVATION



Jeffrey R. Keefe 6-18-2013
JEFFREY R. KEEFE
PROFESSIONAL ENGINEER NO. 58389



Mark A. Yeager 6/18/13
MARK A. YEAGER
PROFESSIONAL SURVEYOR NO. 7289

DATE	DATE	DESCRIPTION	BY
6-18-13			

KS
KS ASSOCIATES
KS Associates, Inc.
260 Burns Road, Suite 100
Elyria, OH 44035
P 440 365 4730
F 440 365 4790
www.ksassociates.com

**CHESAPEAKE CONDOMINIUM
PHASE NO. 17**
PART OF
ORIGINAL CARLISLE TOWNSHIP SECTION NO. 5
CITY OF ELYRIA COUNTY OF LORAIN STATE OF OHIO

SHEET
2
OF
2
JOB NO.
04142-CP17