

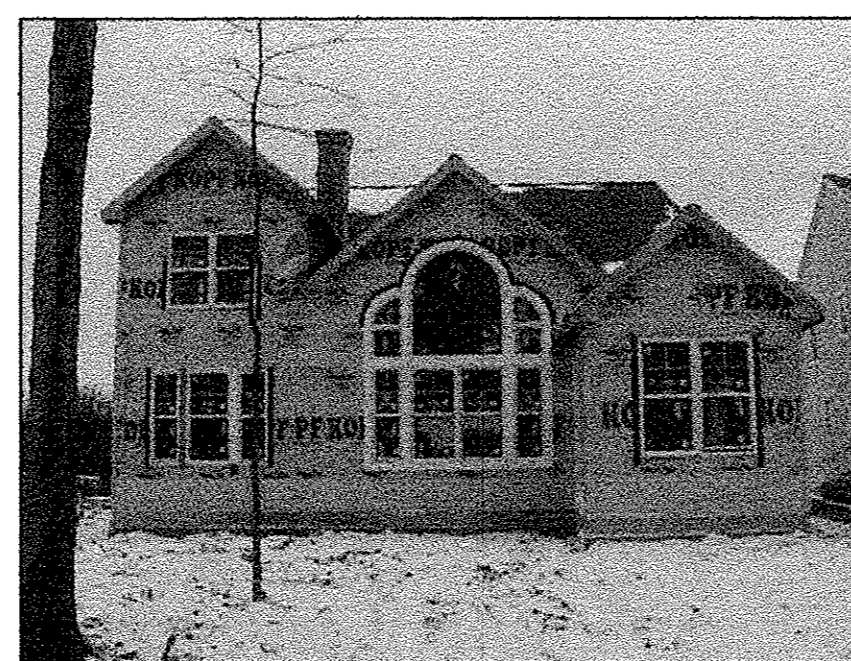
UNIT #16 FRONT VIEW



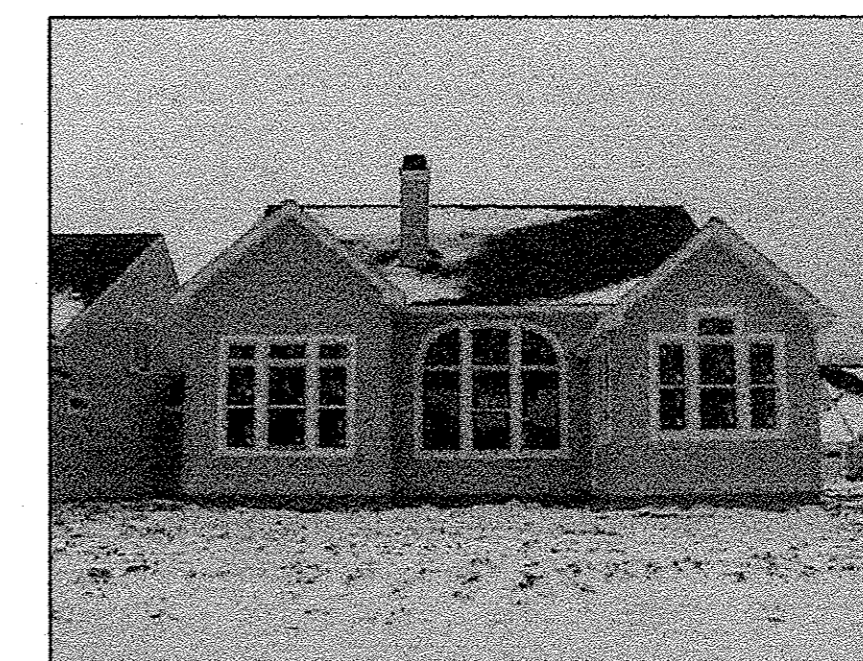
UNIT #17 FRONT VIEW



UNIT #18 FRONT VIEW



UNIT #16 REAR VIEW



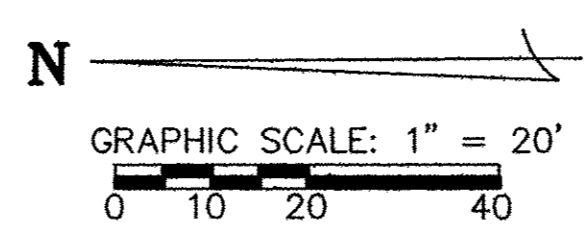
UNIT #17 REAR VIEW



UNIT #18 REAR VIEW

Doc ID: 017409610001 Type: OFF  
 Kind: PLAT  
 Recorded: 03/28/2013 at 02:17:08 PM  
 Fee Amt: \$176.80 Page 1 of 1  
 Lorain County, Ohio  
 Judith H. Medlock County Recorder  
 File 2013-0453972  
 - PG 2 -

LAWYERS TITLE CO  
 5340 MEADOW LANE  
 SHEFFIELD VILLAGE, OH 44054



REVISIONS	

**LEGACY POINTE  
 CONDOMINIUM NO. 6 PH 6**  
 BEING PART OF BLOCK "P" IN THE LEGACY POINTE SUBDIVISION NO. 5  
 AS RECORDED IN VOL. 92 OF PLATS, PGS. 27-30 OF LORAIN COUNTY  
 RECORDS, OF PART OF ORIGINAL AVON TWP. SECTION 17  
 CITY OF AVON LAKE, COUNTY OF LORAIN, OHIO

**THE HENRY G. REITZ  
 ENGINEERING COMPANY**  
 4214 ROCKY RIVER DRIVE  
 CLEVELAND, OHIO 44135  
 PHONE: (216) 251-3033

L:\dmg\mk\legwest\CONDOCS\LEGACY-E-6.dwg, 1:20