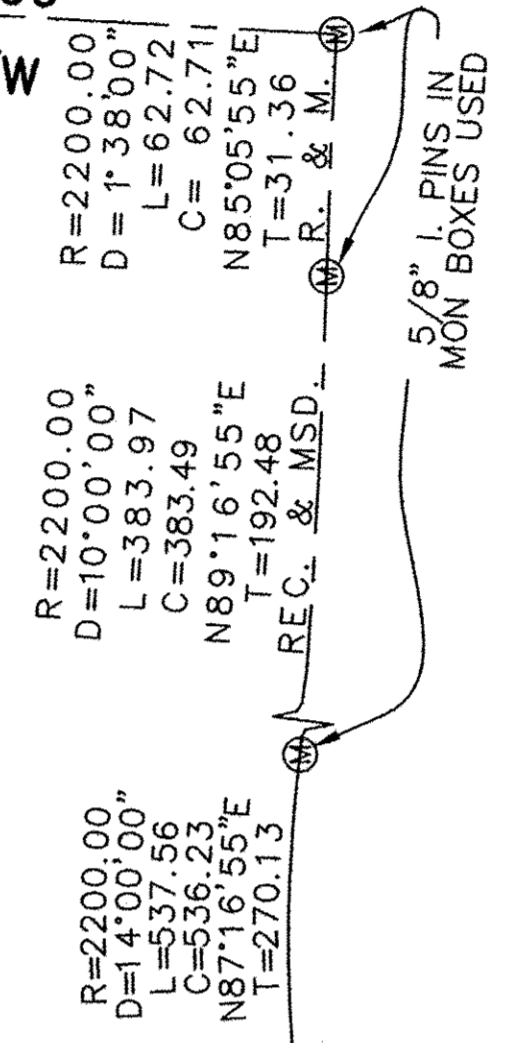


ACREAGE BREAKDOWN:

TOTAL SITE	622,725 SQ. FT.	14.2958 ACRES
PHASE ONE	112,862 SQ. FT.	2.5910 ACRES
PHASE TWO	12,867 SQ. FT.	0.2954 ACRES
PHASE THREE	201,632 SQ. FT.	4.6288 ACRES
PHASE FOUR	45,514 SQ. FT.	1.0449 ACRES
PHASE FIVE	46,810 SQ. FT.	1.0746 ACRES
PHASE SIX	102,882 SQ. FT.	2.3619 ACRES
PHASE SEVEN	47,794 SQ. FT.	1.0972 ACRES
PHASE EIGHT	7,653 SQ. FT.	0.1757 ACRES
PHASE NINE	7,418 SQ. FT.	0.1703 ACRES
PHASE TEN	9,255 SQ. FT.	0.2125 ACRES
PHASE ELEVEN	24,041 SQ. FT.	0.5519 ACRES

BUCKHEAD 60'  
N4°05'05"W  
PUBLIC R/W



TRANSFERRED  
IN COMPLIANCE WITH SEC. 319-200  
OHIO REV. CODE  
FEB - 5 2013  
I. CRAIG SNOODGRASS, CPA, CGFM  
LORAIN COUNTY AUDITOR

Doc ID: 017333650002 Type: GPF  
Kind: PLAT  
Recorded: 02/05/2013 at 02:47:16 PM  
Fee Amt: \$172.80 Page 1 of 2  
Lorain County, Ohio  
Judith M. Nedwick County Recorder  
File # 2013-0447125

LAWYERS TITLE CO  
5340 MEADOW LANE  
SHEFFIELD VILLAGE, OH 44054

Plat Vol 98  
Pg 35-36

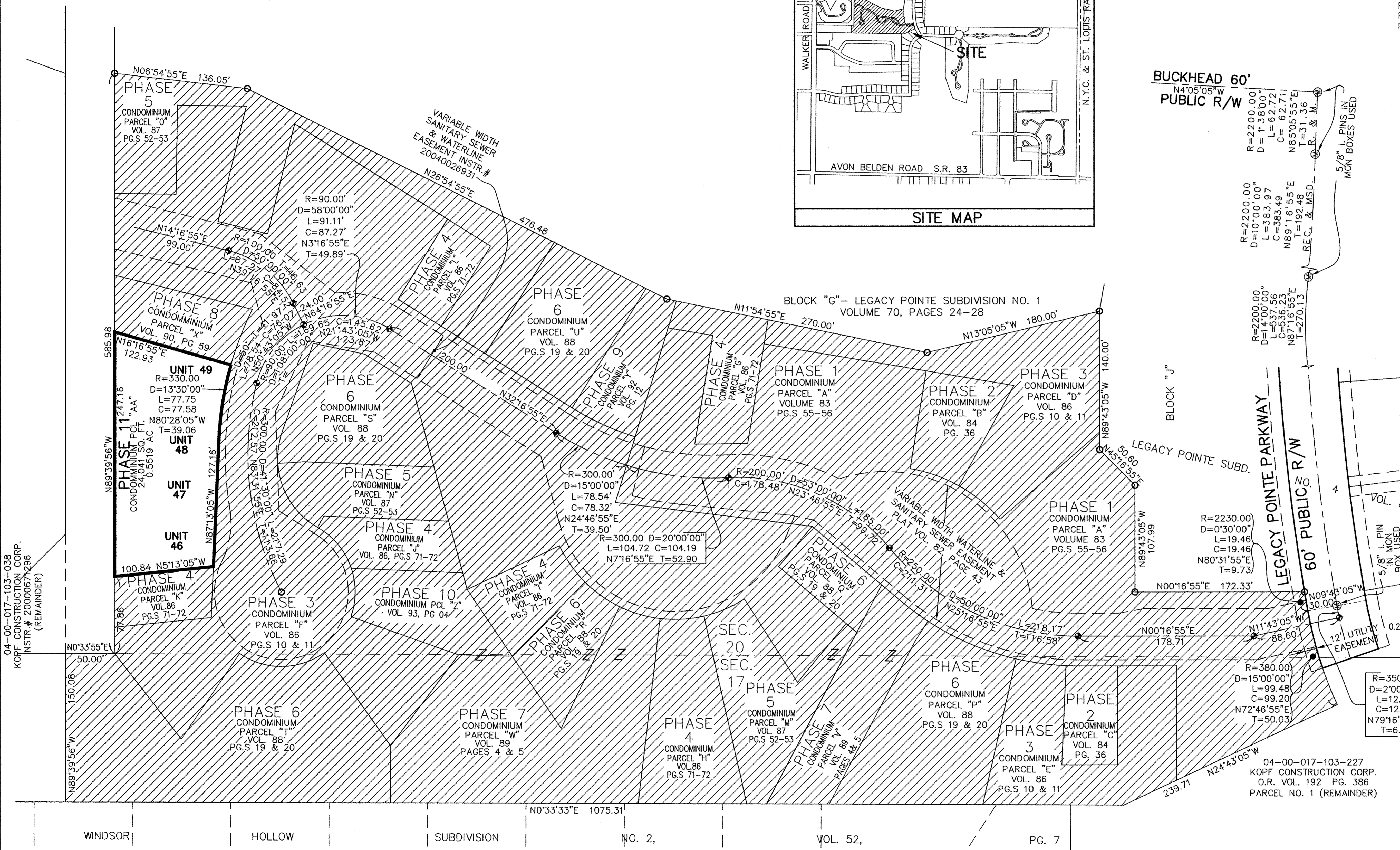
04-00-020-101-132  
SWEETBRIAR MANAGEMENT CO.  
INSTRUMENT #20020626643

04-00-020-101-197  
LEGACY POINTE, LTD.  
0.2936 ACRE (NON-CONDO PORTION  
OF REMAINDER IN SEC. 20)

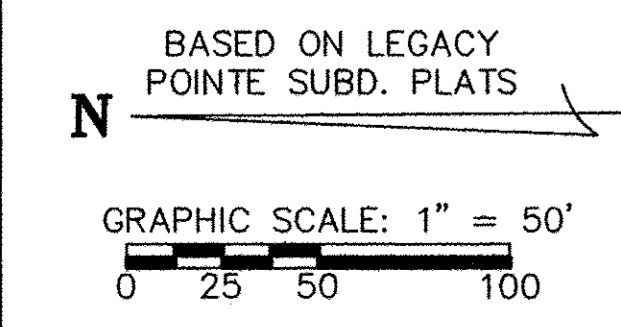
**CERTIFICATION**  
THIS IS TO CERTIFY THAT THE ATTACHED DRAWINGS  
CORRECTLY REPRESENT THE BUILDINGS AS  
CONSTRUCTED AND THAT THERE ARE NO  
ENCROACHMENTS ON ADJUTING PROPERTIES.

JAMES T. SAYLER, P.E.  
PROFESSIONAL ENGINEER NO. E-52385  
JAMES T. SAYLER  
PROFESSIONAL SURVEYOR NO. S-7425

NOTE:  
LIMITED COMMON ELEMENTS INCLUDE THE  
3 FEET FROM THE FOUNDATION AND PATIO  
DECKS/PORCHES/SUNROOMS OF EACH UNIT, AND LAND  
12 FEET OFF OF MAIN REAR WALL FOR CONSTRUCTION  
OF A DECK OR PATIO



04-00-017-103-038  
KOPF CONSTRUCTION CORP.  
INSTR. # 2000067296  
(REMAINDER)



- LEGEND:**
- ⊙ DENOTES 5/8" CAPPED (REITZ ENG.) IRON PIN IN MONUMENT BOX USED.
  - DENOTES 5/8" CAPPED (REITZ ENG.) IRON PIN USED.
  - ◆ DENOTES 1/4" DRILL HOLE USED

REVISIONS	DATE	DESCRIPTION

**LEGACY POINTE  
CONDOMINIUM NO. 3 PH 11**  
OF PART OF ORIGINAL AVON TWP. SEC #17 & #20  
CITY OF AVON LAKE, COUNTY OF LORAIN, OHIO

**THE HENRY G. REITZ  
ENGINEERING COMPANY**  
4214 ROCKY RIVER DRIVE  
CLEVELAND, OHIO 44135  
PHONE: (216) 251-3033

1  
2  
JANUARY  
2013

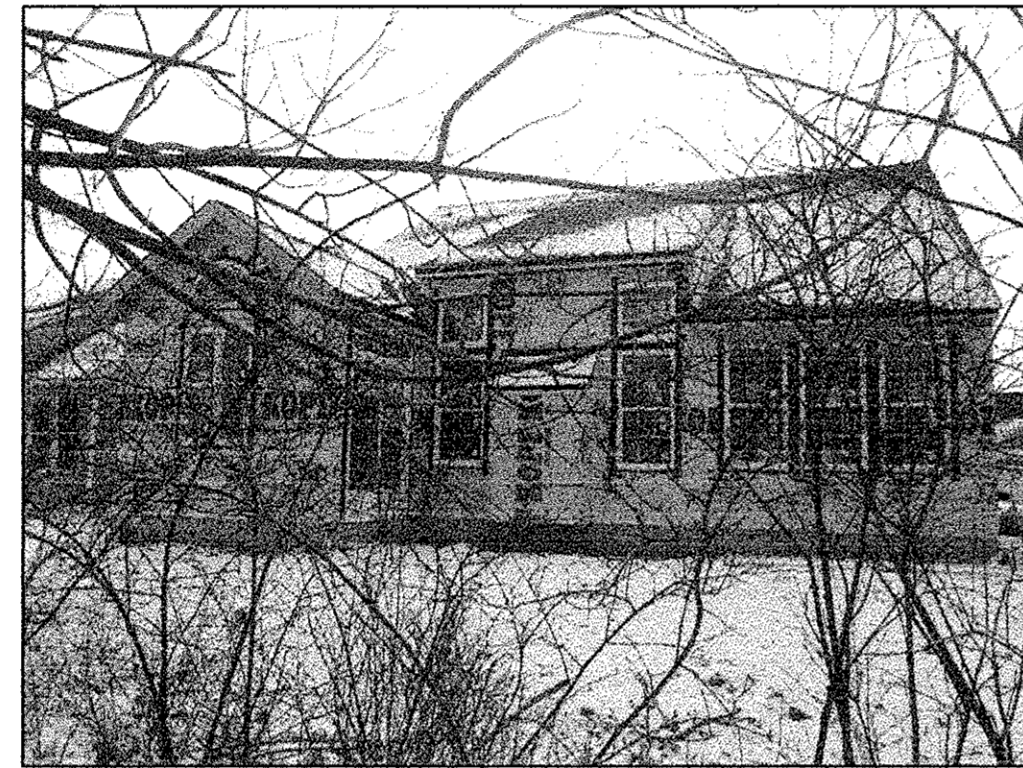
L:\Drawings\LEGACY\condo-3-11-1.dwg, 1:50



UNIT 49 REAR



UNIT 49 FRONT



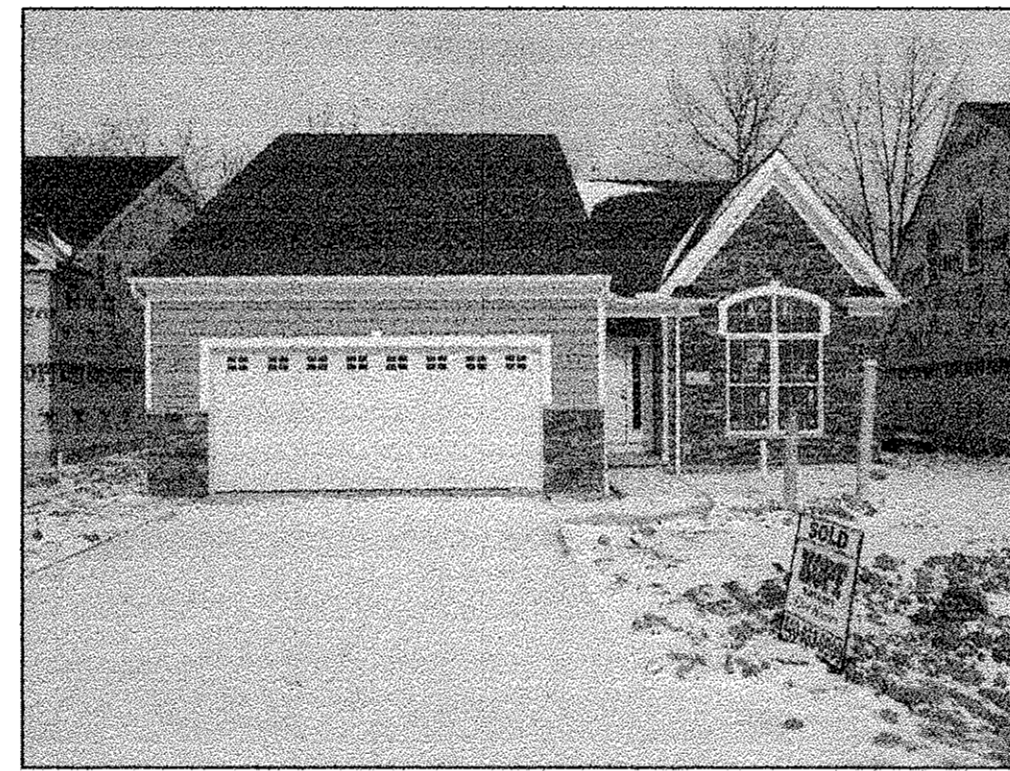
UNIT 48 REAR



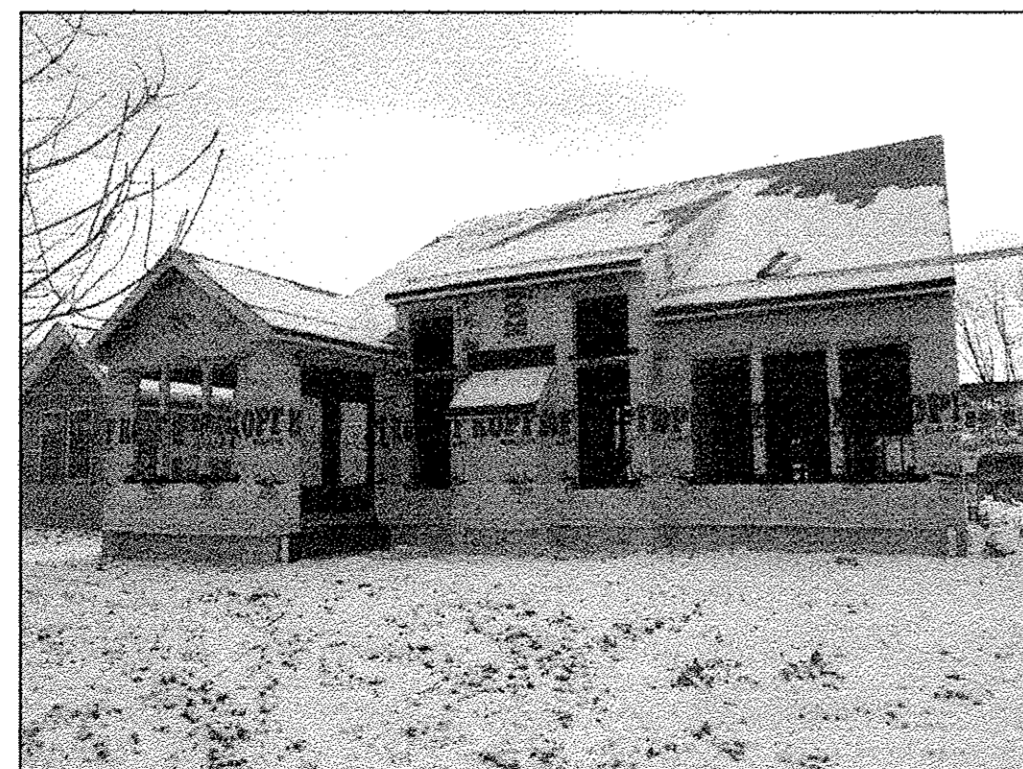
UNIT 48 FRONT



UNIT 47 REAR



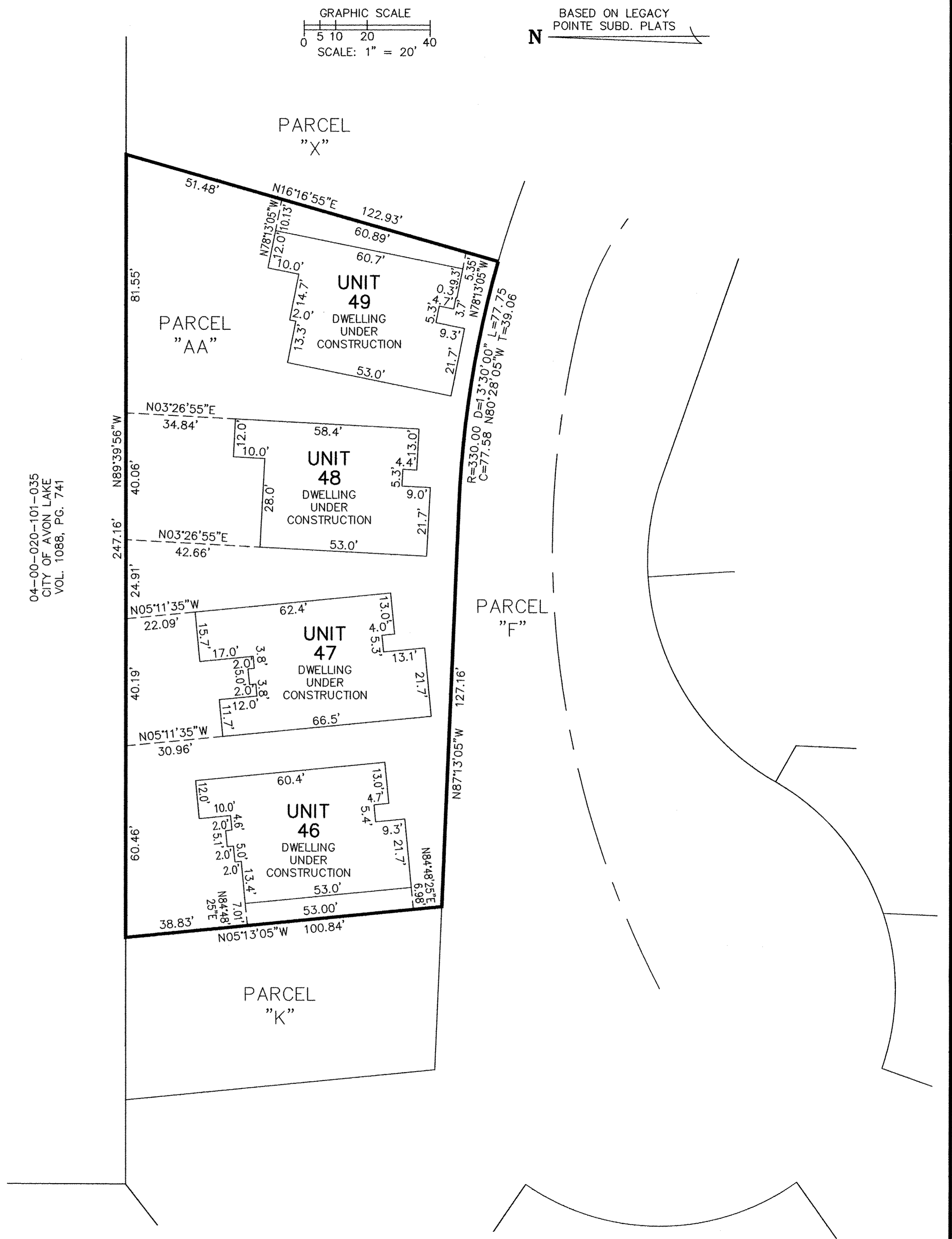
UNIT 47 FRONT



UNIT 46 REAR



UNIT 46 FRONT



REVISIONS	

**LEGACY POINTE  
CONDOMINIUM NO. 3 PH 11**  
OF PART OF ORIGINAL AVON TWP. SEC #17 & #20  
CITY OF AVON LAKE, COUNTY OF LORAIN, OHIO

**THE HENRY G. REITZ  
ENGINEERING COMPANY**  
4214 ROCKY RIVER DRIVE  
CLEVELAND, OHIO 44135  
PHONE: (216) 251-3033

L:\Users\K\LEGAC\Drawings\3-11-1.dwg, 1:20