

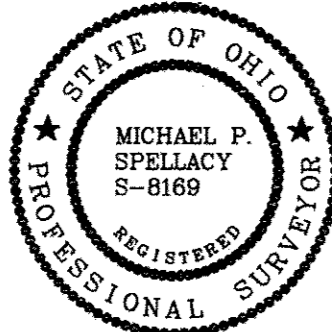
EIGHTH AMENDMENT TO  
DECLARATION OF CONDOMINIUM FOR  
QUARRY LAKES AT AMHERST CONDOMINIUM  
BEING A PART OF ORIGINAL AMHERST TOWNSHIP LOT NUMBER 21,  
NOW IN THE CITY OF AMHERST - LORAIN COUNTY - STATE OF OHIO  
OCTOBER 5, 2012  
SCALE 1 INCH = 60 FEET

EXHIBIT B  
ADDING UNITS AS CONSTRUCTED:  
UNITS 341, 351, 361, 371, 440,  
AND 560

GRANTOR: AMHERST CONDOMINIUMS, L.L.C.

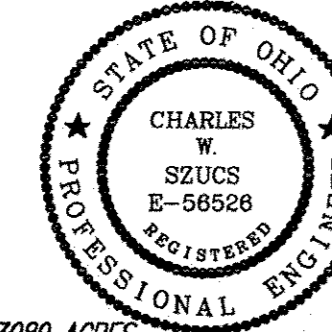
I HEREBY CERTIFY THAT THIS DRAWING ACCURATELY REFLECTS THE LOCATION OF  
IMPROVEMENTS AND RECORDED EASEMENTS REFLECTED IN FIDELITY NATIONAL TITLE INSURANCE  
COMPANY A.L.T.A. POLICY COMMITMENT FC06-1086 DATED OCTOBER 9, 2007

Michael P. Spellacy 10/5/2012  
MICHAEL P. SPELLACY P.S. #9169 DATE



I HEREBY CERTIFY THAT THESE DRAWINGS ACCURATELY SHOW EACH BUILDING AS  
BUILT OR CONSTRUCTED.

Charles W. Szucs 10-5-12  
CHARLES W. SZUCS, P.E. #56526 DATE



ACREAGE BREAKDOWN:

ACREAGE OF UNITS ..... 0.3089 ACRES  
ACREAGE OF COMMON ELEMENTS OUTSIDE OF BUILDINGS  
(NOT INCLUDING COMMON ELEMENTS UNDER BUILDINGS) ..... 0.4744 ACRES

TOTAL AREA OF LAND DECLARED ..... 0.7833 ACRES

PREVIOUSLY DECLARED ..... 9.9787 ACRES

ADDITIONAL LANDS AMHERST CONDOMINIUMS LLC ..... 5.8309 ACRES

LAND CONVEYED TO THE CITY OF AMHERST FOR  
DEDICATED ROADWAY ..... 2.1352 ACRES  
(LESS 0.1184 ACRES  
OF PREVIOUSLY DECLARED LAND)  
2.0168 NET

ADDITIONAL LANDS TUCO EAST LTD. .... 31.2134 ACRES

TOTAL ..... 49.8231 ACRES

BOUNDARY SURVEY LEGEND

5/8" Iron Pin Set	○	A, Act. .... Actual Measurement or Calculation
Iron Pin/Pipe Found	●	U, Used ..... Used Measurement or Monument
Mon Box Found With Pin/Pipe	M	M, Msd. .... Measured
Monument Box Found (Empty)	■	D, R, Rec. .... Deed or Record
Survey Nail Set	△	Calc. .... Calculated
Survey Nail Found	△	C/L ..... Centerline
Stone/Concrete Monument Found	⊙	O, Obs. .... Observed
Drill Hole Set	⊙	P.P.N. .... Permanent Parcel Number
Drill Hole Found	⊙	
Railroad Spike Set	⊕	
Railroad Spike Found	⊕	

PERCENTAGE OF OWNERSHIP INTEREST  
QUARRY LAKES AT AMHERST CONDOMINIUM

UNIT NO.	PERCENTAGE OF OWNERSHIP IN COMMON AREAS
100	1.8518 % Phase 1
110	1.8518 %
120	1.8518 %
130	1.8518 %
140	1.8518 %
150	1.8518 %
160	1.8518 %
170	1.8518 %
180	1.8518 %
190	1.8518 %
200	1.8518 %
210	1.8518 %
221	1.8518 % Phase 2
131	1.8518 %
141	1.8518 %
151	1.8518 %
261	1.8518 %
271	1.8518 %
281	1.8518 %
291	1.8518 %
301	1.8518 % Phase 3
311	1.8518 %
321	1.8518 %
331	1.8518 %
570	2.2223 %
540	2.2223 % Phase 4
571	2.2223 %
591	2.2223 %
220	1.8518 % Phase 5
230	1.8518 %
240	1.8518 %
250	1.8518 %
400	1.8518 %
410	1.8518 %
581	2.2223 % Phase 6
300	1.8518 % Phase 7
310	1.8518 %
420	2.2223 %
430	2.2223 %
450	2.2223 %
510	2.2224 %
520	2.2224 %
541	2.2224 %
551	2.2224 %
561	2.2224 %
341	1.8518 % Phase 8
351	1.8518 %
361	1.8518 %
371	1.8518 %
440	2.2224 %
560	2.2224 %

DECLARED 100.0000%

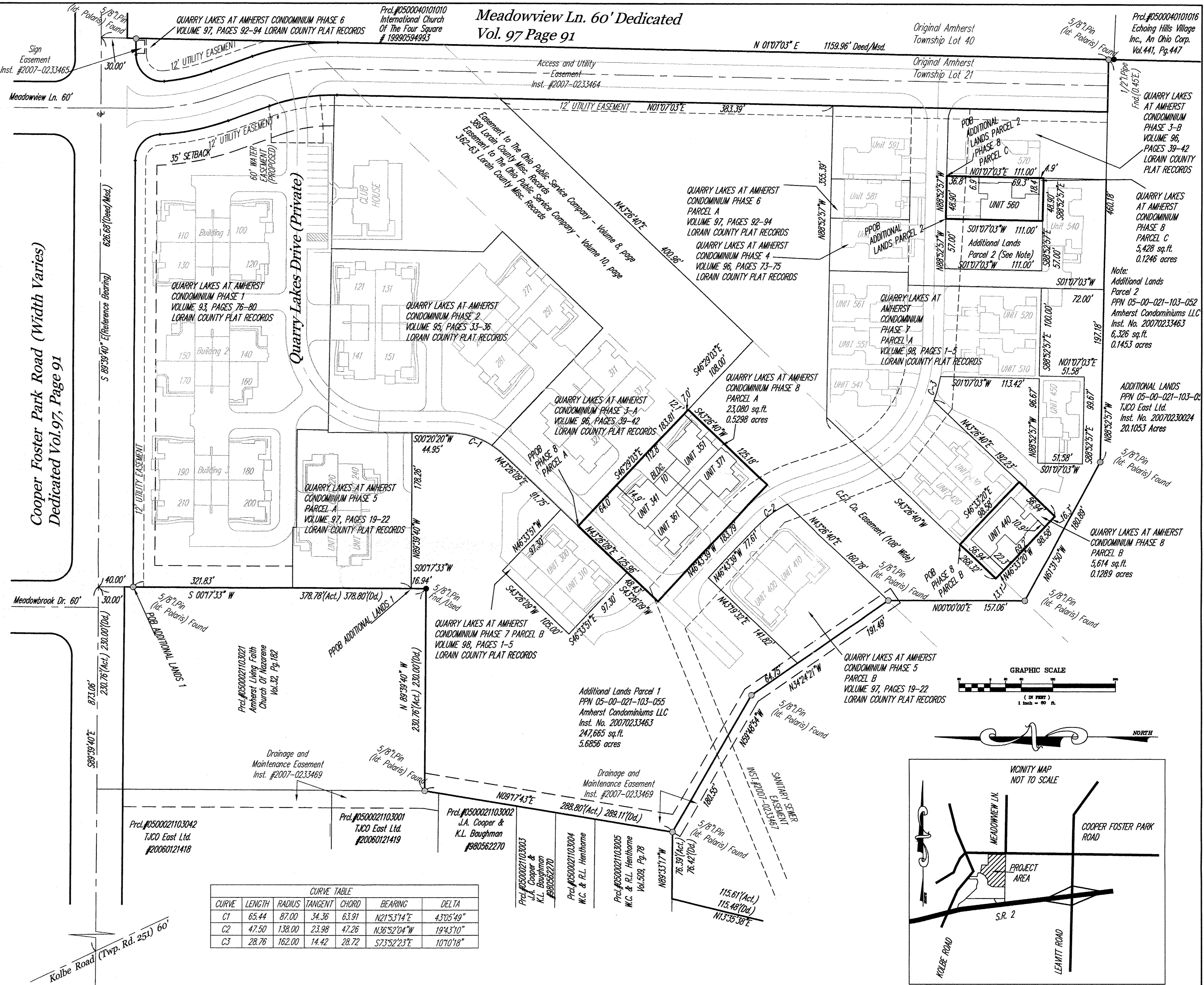
REMAINDER OWNED BY DECLARANT 0

TOTAL 100.00%

TRANSFERRED  
IN COMPLIANCE WITH SEC. 319-022  
OHIO REV CODE

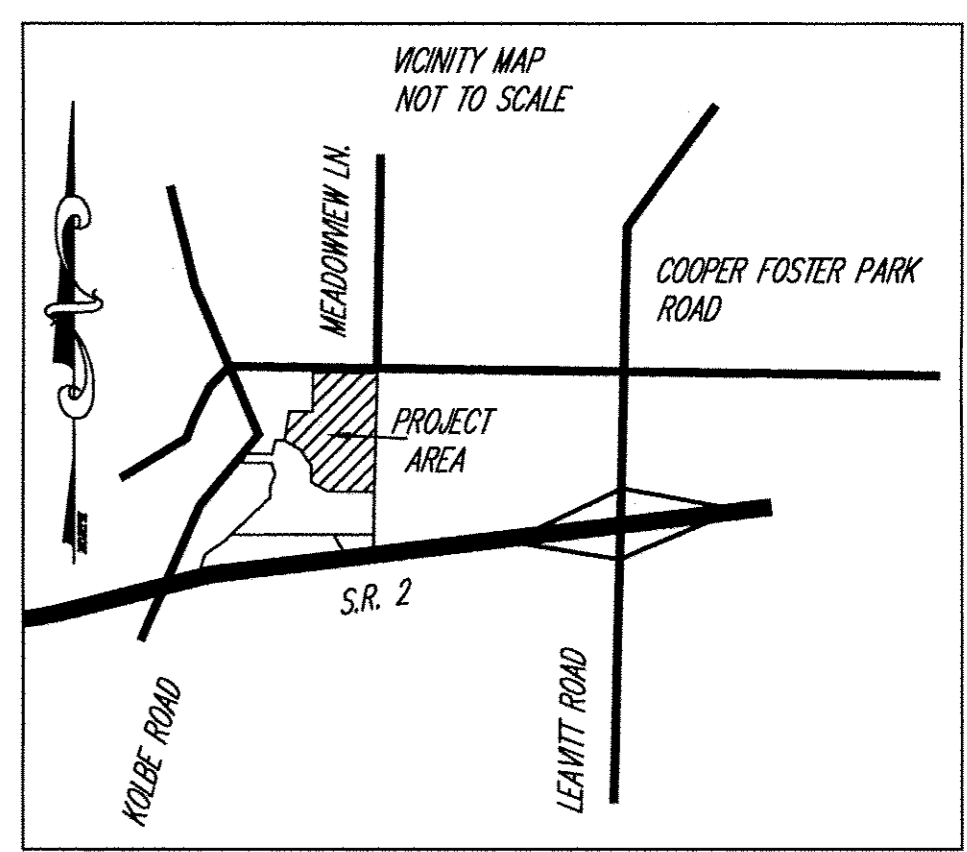
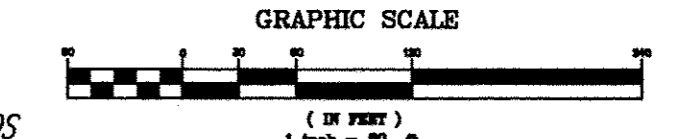
NOV - 5 2012

MARK R. STEWART  
LORAIN COUNTY SURVEYOR



CURVE TABLE

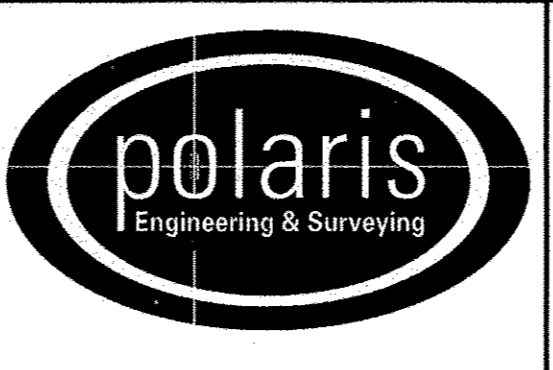
CURVE	LENGTH	RADIUS	TANGENT	CHORD	BEARING	DELTA
C1	65.44	87.00	34.36	63.91	N21°53'14"E	43°05'49"
C2	47.50	138.00	23.98	47.26	N36°52'04"W	19°43'10"
C3	28.76	162.00	14.42	28.72	S73°52'23"E	10°10'18"



REV. No.	DATE	BY	CHK'D

DATE: 10/05/2012  
SCALE: HOR. 1"= 60'  
VERT. 1"= 60'  
FOLDER: 07-013\dwg\plots  
FILENAME: condo plat phase 8  
TAB: condo 8-1  
DRAWN: mps

QUARRY LAKES AT AMHERST  
CONDOMINIUM PHASE 8  
PART OF ORIGINAL AMHERST TOWNSHIP LOT 21  
CITY OF AMHERST - LORAIN COUNTY - OHIO

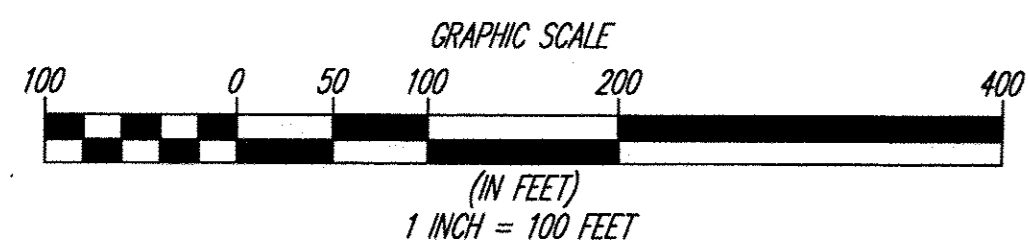
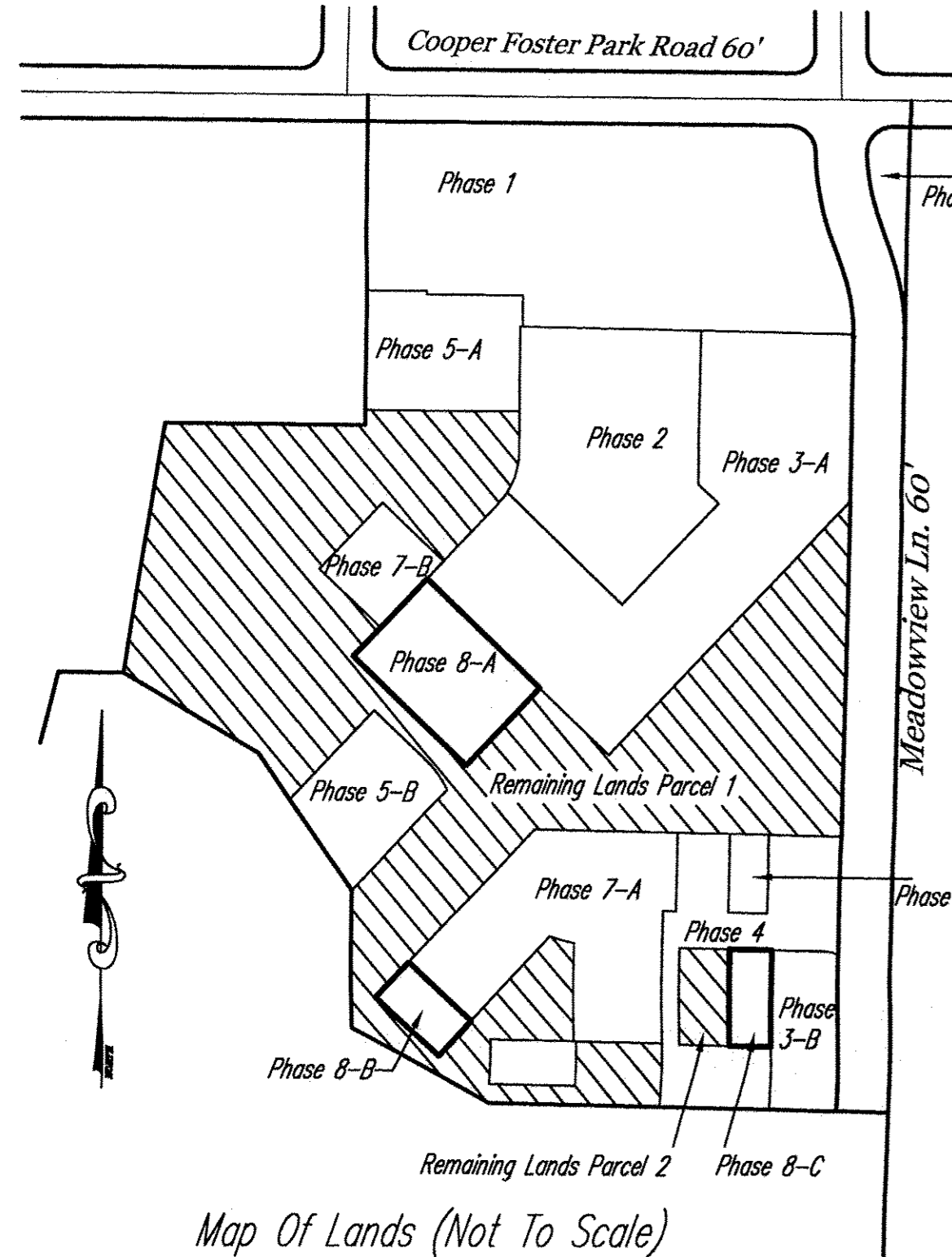


POLARIS ENGINEERING & SURVEYING, INC.  
34600 CHARDON ROAD - SUITE D  
WILLOUGHBY HILLS, OHIO 44094  
(440) 944-4433 (440) 944-3722 (Fax)  
www.polaris-es.com

DECLARATION OF  
CONDOMINIUM  
PHASE 8

CONTRACT No.	
07-013	
SHEET	OF
01	04

MAP OF ADDITIONAL LANDS FOR EIGHTH AMENDMENT TO DECLARATION OF CONDOMINIUM FOR QUARRY LAKES AT AMHERST CONDOMINIUM BEING A PART OF ORIGINAL AMHERST TOWNSHIP LOT NUMBER 21, NOW IN THE CITY OF AMHERST - LORAIN COUNTY - STATE OF OHIO SEPTEMBER 10, 2012 SCALE 1 INCH = 100 FEET



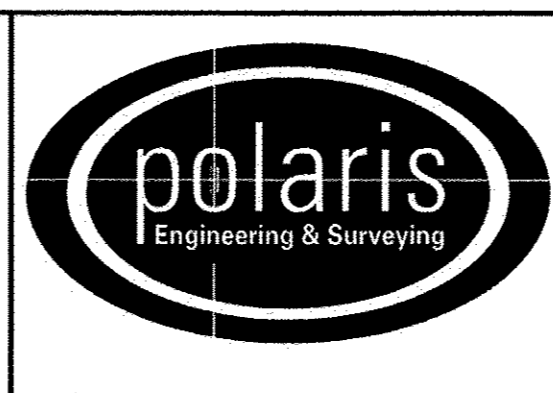
BOUNDARY SURVEY LEGEND

5/8" Iron Pin Set	○ A, Act. .... Actual Measurement or Calculation
Iron Pin/Pipe Found	● U, Used ..... Used Measurement or Monument
Mon Box Found With Pin/Pipe	M, Msd. .... Measured
Monument Box Found (Empty)	D, R, Rec. .... Deed or Record
Survey Nail Set	△ Calc. .... Calculated
Survey Nail Found	C/L ..... Centerline
Stone/Concrete Monument Found	O, Obs. .... Observed
Drill Hole Set	P.P.N. .... Permanent Parcel Number
Drill Hole Found	
Railroad Spike Set	
Railroad Spike Found	

REV. No.	DATE	BY	CHK'D

DATE: 10/05/2012  
 SCALE: HOR. 1" = 100'  
 VERT. 1" = 0'  
 FOLDER: 07-013\dwg\plate  
 FILENAME: condo\_plat\_phase\_8  
 TAB: condo\_8-2  
 DRAWN: mps

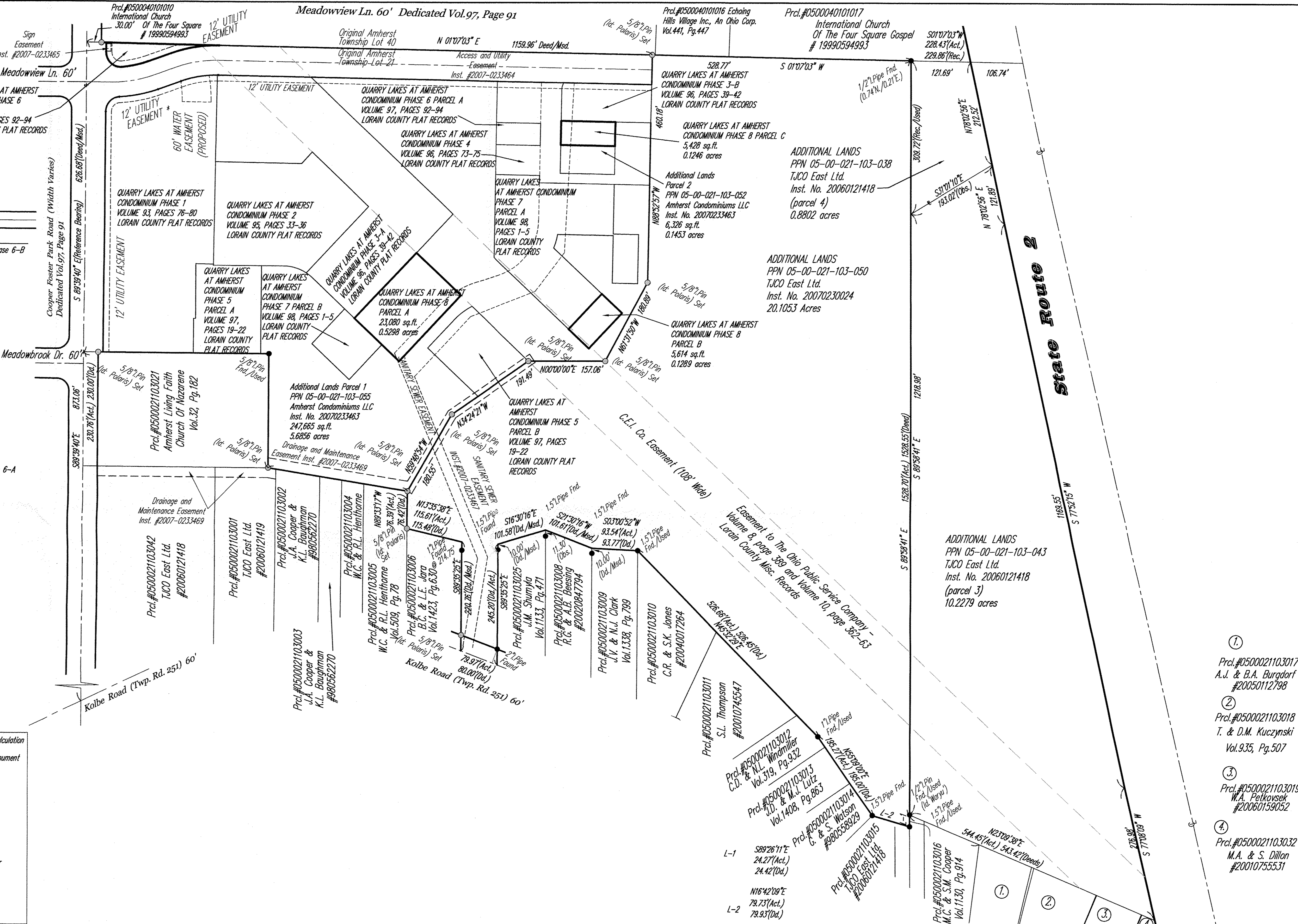
QUARRY LAKES AT AMHERST CONDOMINIUM PHASE 8 PART OF ORIGINAL AMHERST TOWNSHIP LOT 21 CITY OF AMHERST - LORAIN COUNTY - OHIO



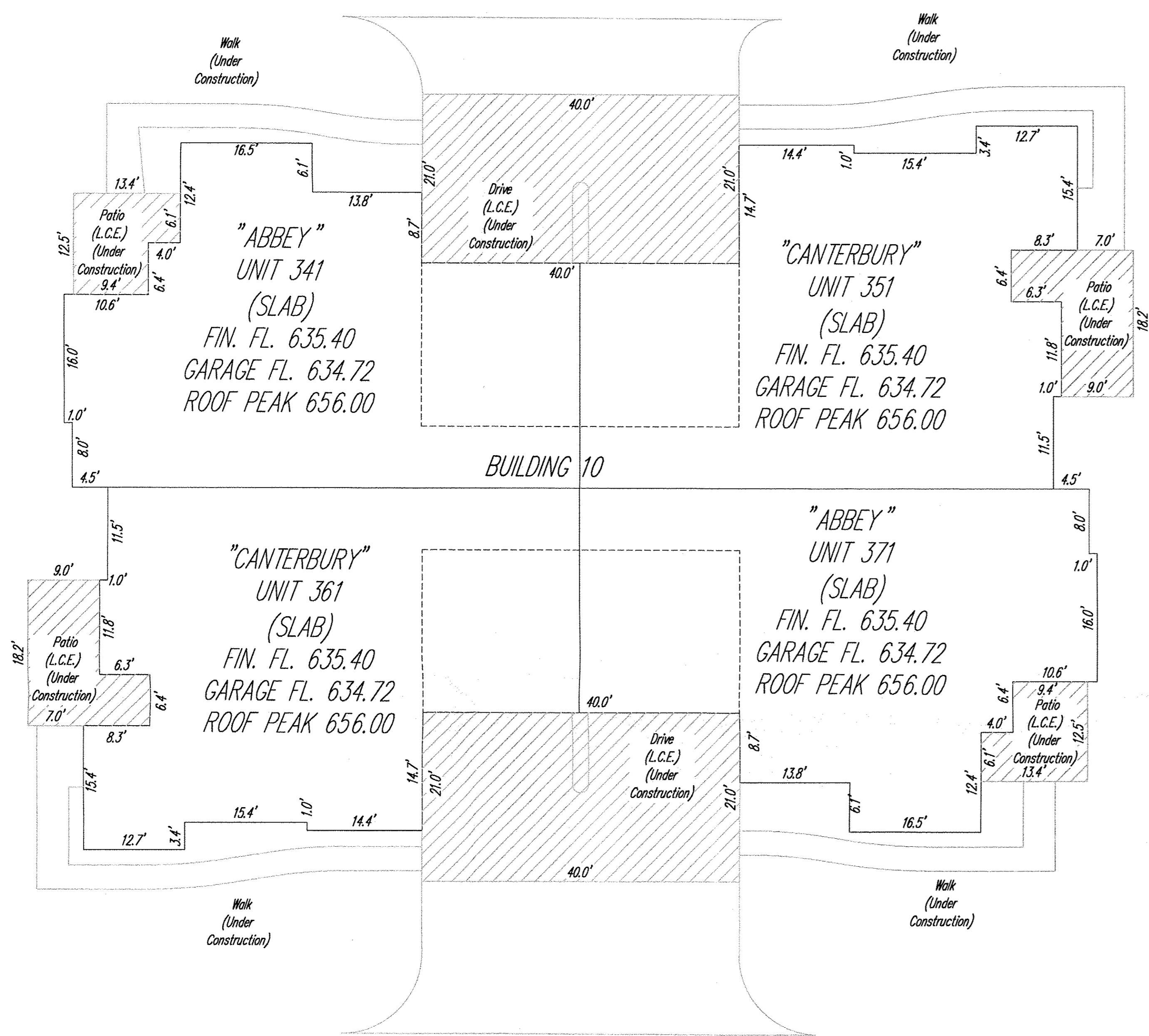
POLARIS ENGINEERING & SURVEYING, INC.  
 34600 CHARDON ROAD - SUITE D  
 WILLOUGHBY HILLS, OHIO 44094  
 (440) 944-4433 (440) 944-3722 (Fax)  
 www.polaris-es.com

DECLARATION OF CONDOMINIUM PHASE 8

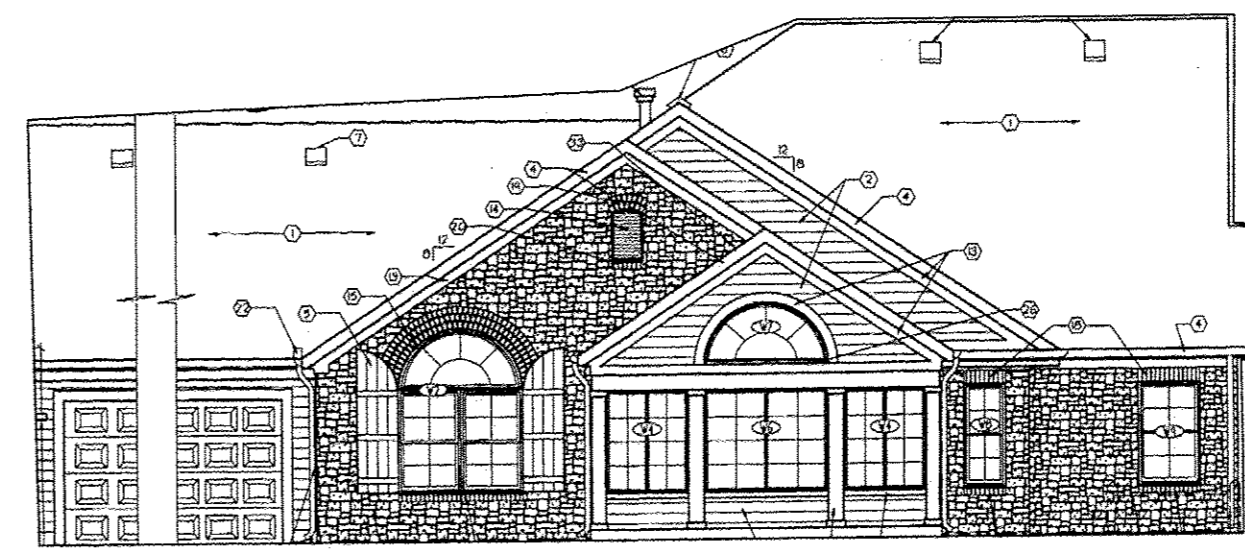
CONTRACT No.	
07-013	
SHEET	OF
02	04



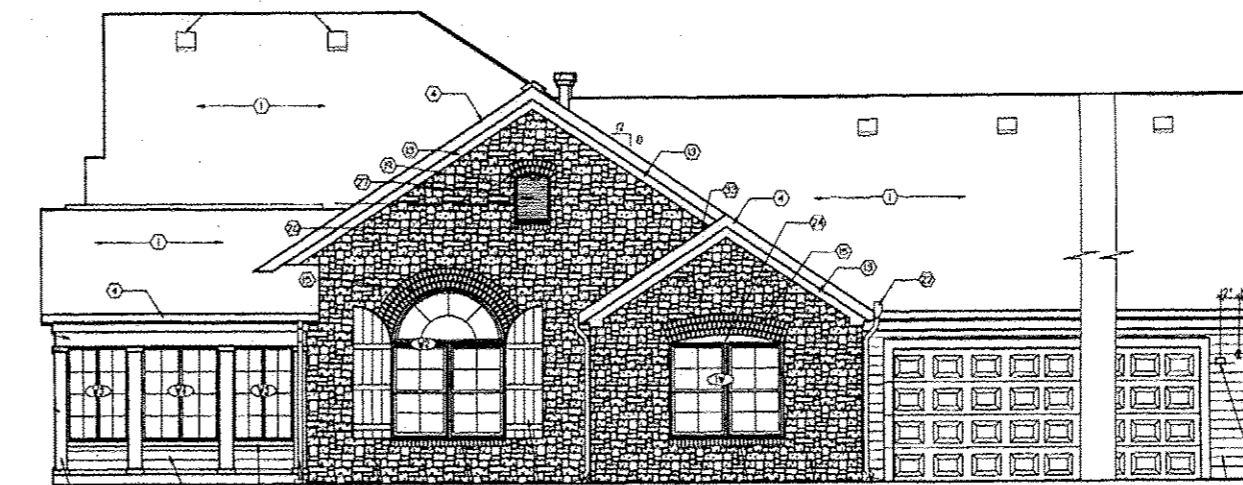
1. Prcl.#0500021103017 A.J. & B.A. Burgdorf #20050112798
2. Prcl.#0500021103018 T. & D.M. Kuczynski Vol.935, Pg.507
3. Prcl.#0500021103019 W.A. Petkosek #20060159052
4. Prcl.#0500021103032 M.A. & S. Dillon #2010755531



ABBEY - CANTERBURY END ELEVATION

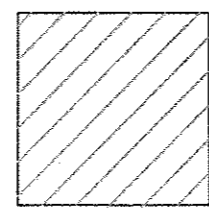


ABBEY - SIDE ELEVATION

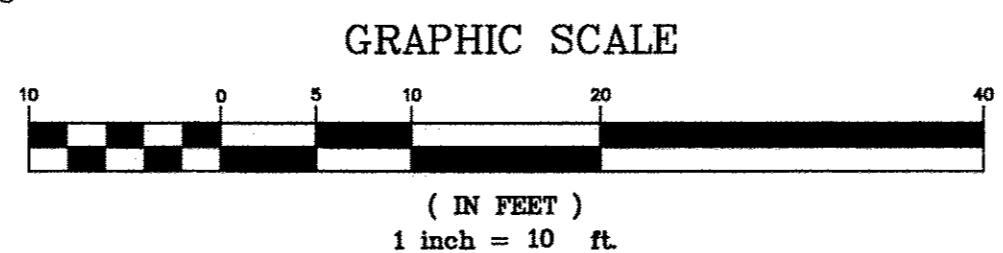


CANTERBURY - SIDE ELEVATION

NOTE: ALL DIMENSIONS ARE EXTERIOR WALL DIMENSIONS OR INDICATE DISTANCE FROM THE EXTERIOR SURFACES OF THE OUTSIDE WALLS TO THE MIDDLE OF THE COMMON WALLS  
 NOTE: L.C.E. = LIMITED COMMON ELEMENTS



Limited Common Elements (L.C.E.)

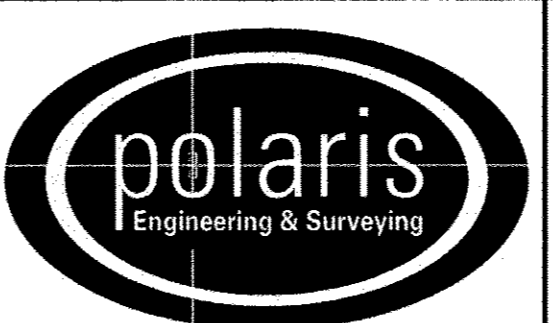


NOTE: ELEVATIONS TAKEN FROM EXTERIOR ELEVATIONS PAGE OF PLANS PREPARED BY JESTER-JONES-SCHIFFER ARCHITECTS LTD. (PAGE 4.1 EC) DATED 10/5/2007 NOT TO SCALE

REV. No.	DATE	BY	CHK'D

DATE: 10/05/2012  
 SCALE: HOR. 1"=10'  
 VERT. 1"=0'  
 FOLDER: 07-013\dwg\plates  
 FILENAME: condo plat phase 8  
 TAB: condo 8-3  
 DRAWN: mps

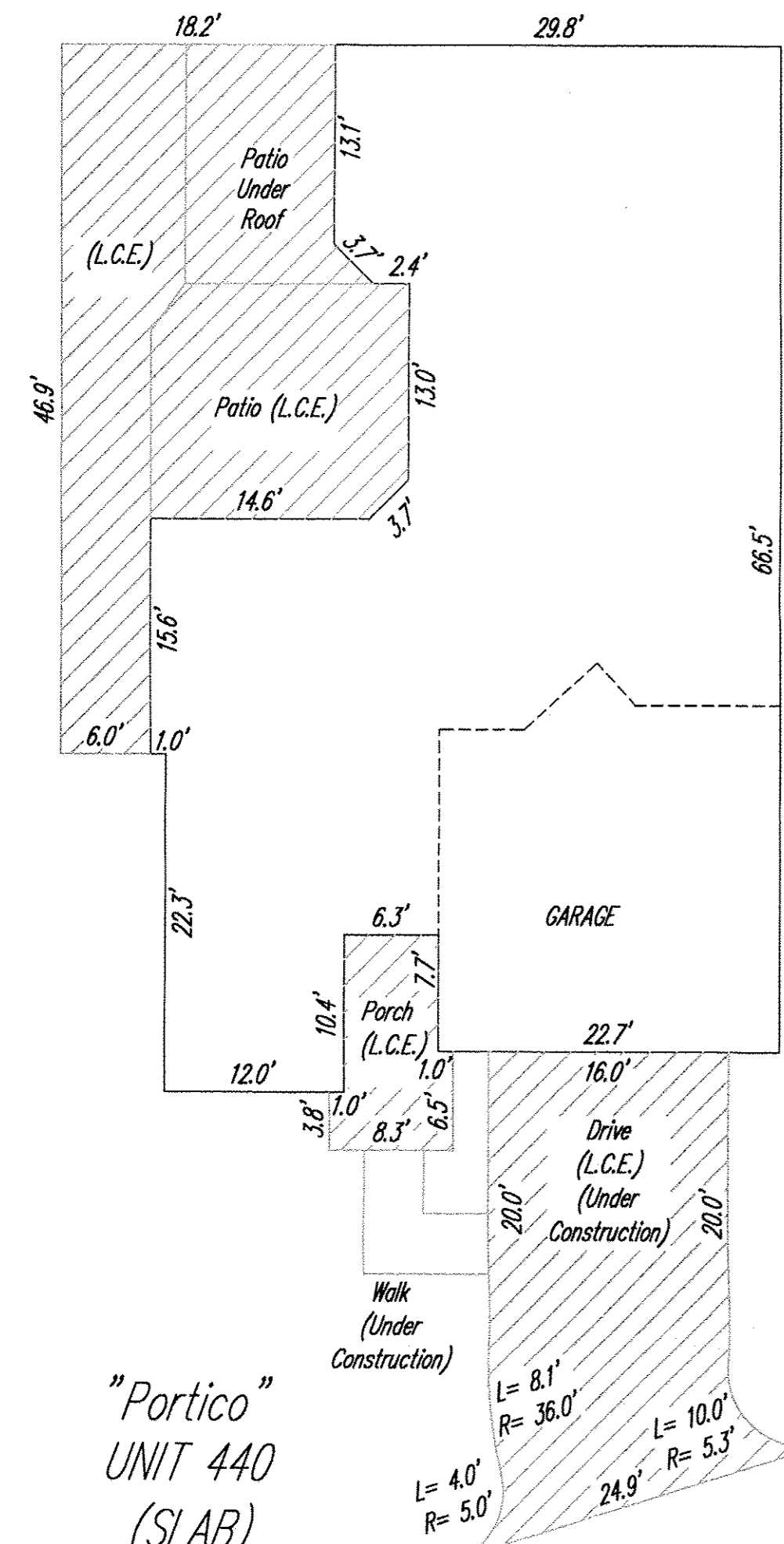
QUARRY LAKES AT AMHERST  
 CONDOMINIUM PHASE 8  
 PART OF ORIGINAL AMHERST TOWNSHIP LOT 21  
 CITY OF AMHERST - LORAIN COUNTY - OHIO



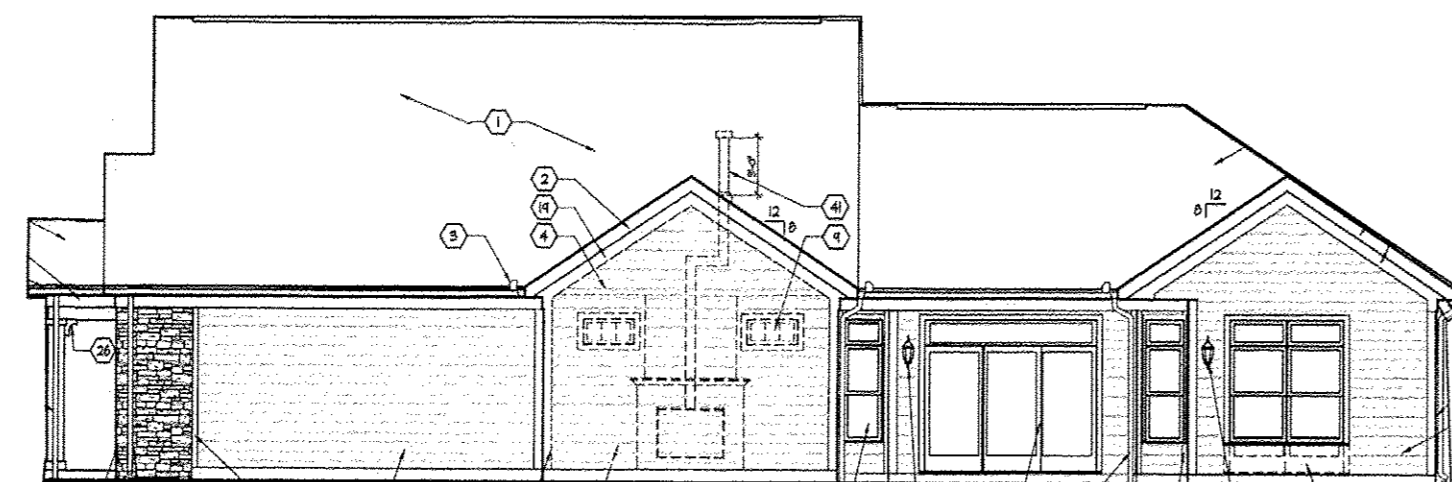
POLARIS ENGINEERING & SURVEYING, INC.  
 34600 CHARDON ROAD - SUITE D  
 WILLOUGHBY HILLS, OHIO 44094  
 (440) 944-4433 (440) 944-3722 (Fax)  
 www.polaris-es.com

DECLARATION OF  
 CONDOMINIUM  
 PHASE 8

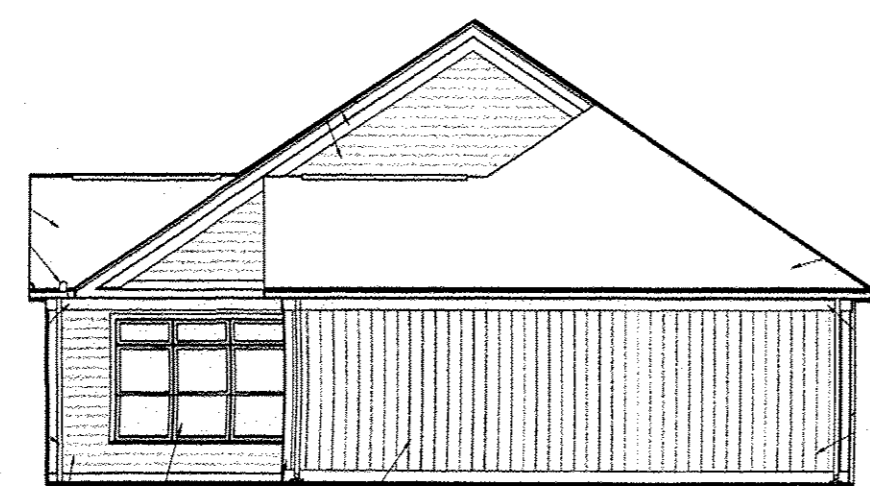
CONTRACT No.	
07-013	
SHEET	OF
03	04



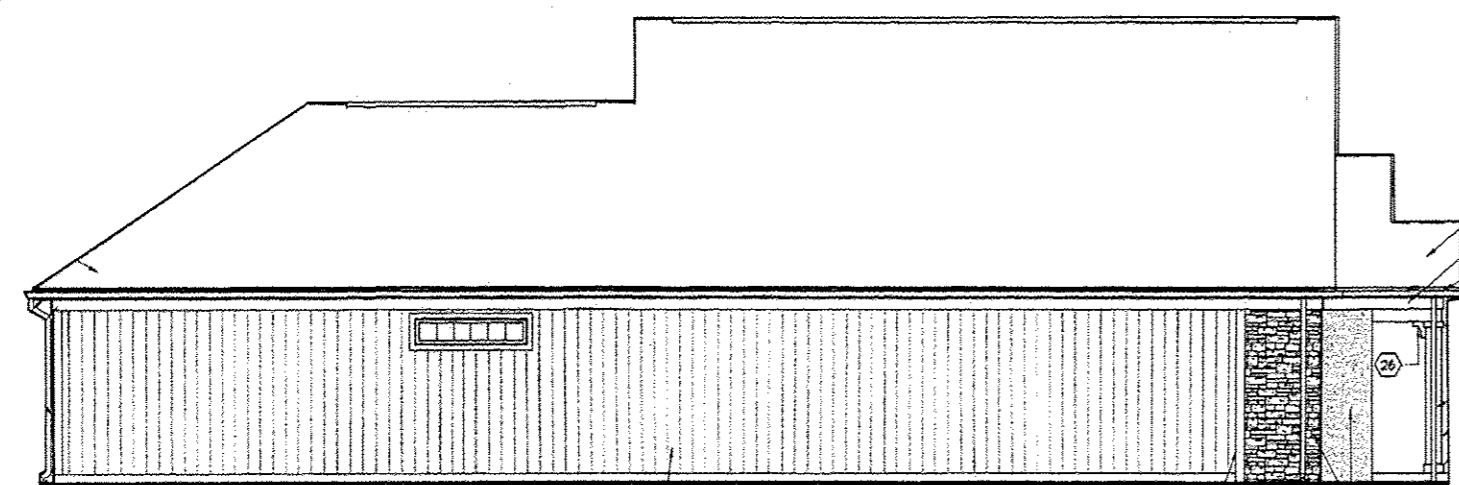
A ELEVATION  
(NOT TO SCALE)



B ELEVATION  
(NOT TO SCALE)

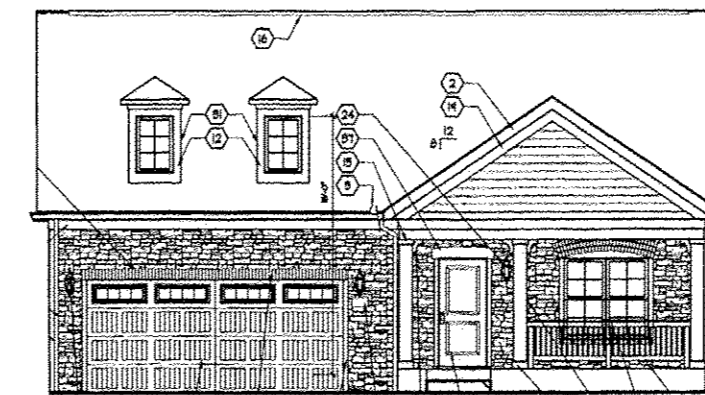


C ELEVATION  
(NOT TO SCALE)

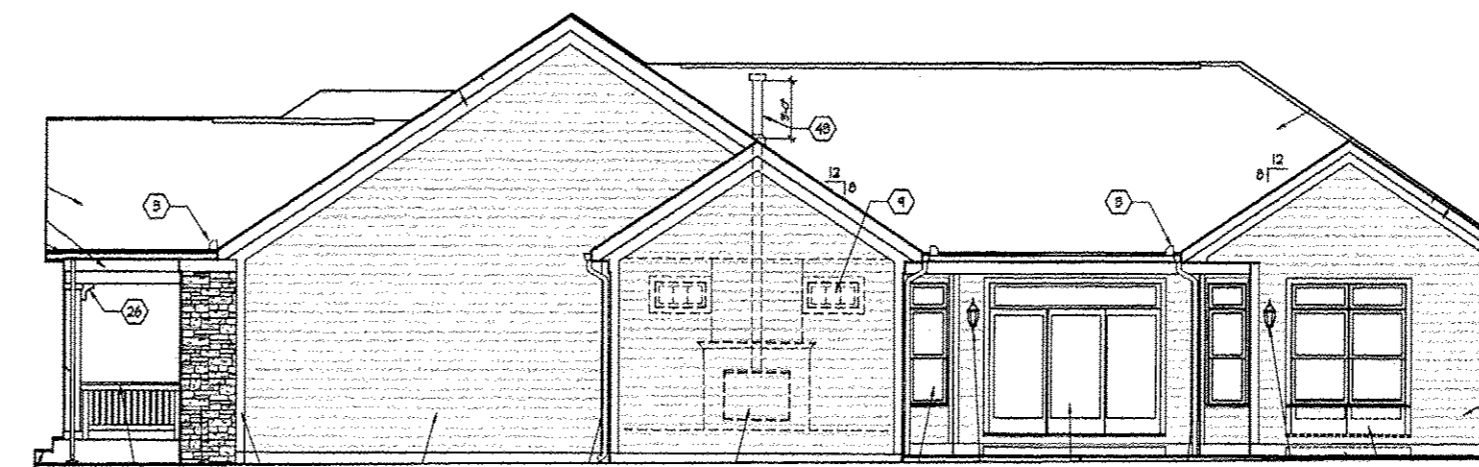


D ELEVATION  
(NOT TO SCALE)

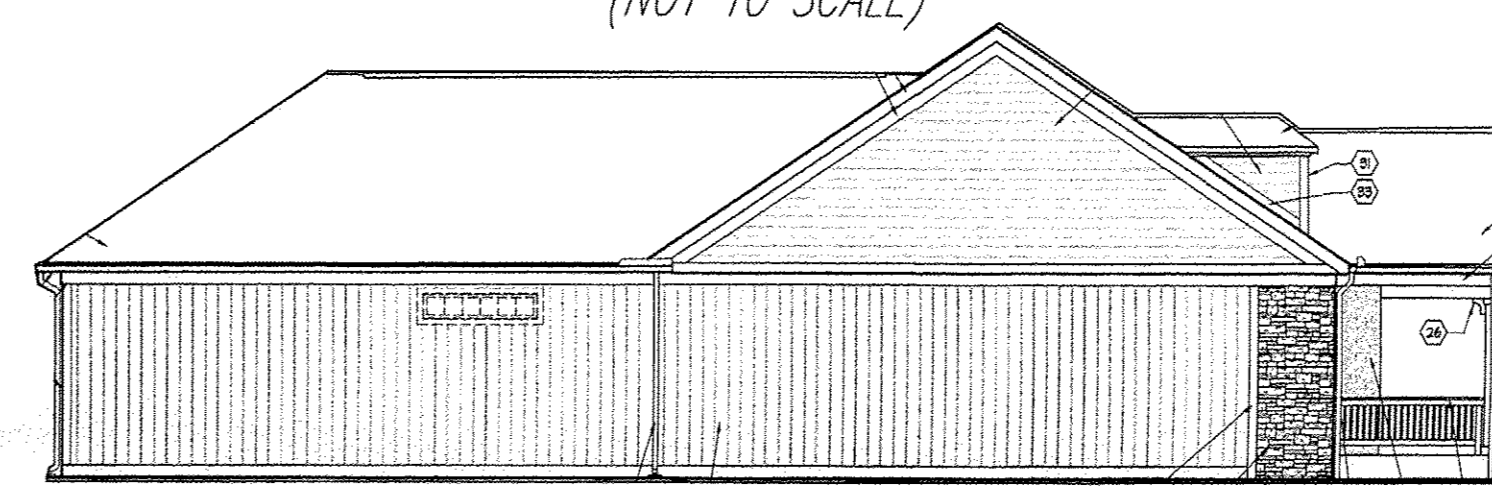
NOTE: ELEVATIONS FOR UNIT 440 TAKEN FROM PAGE A-201 OF PLANS PREPARED BY DEAN WENZ ARCHITECTS DATED 08/11/2010 NOT TO SCALE



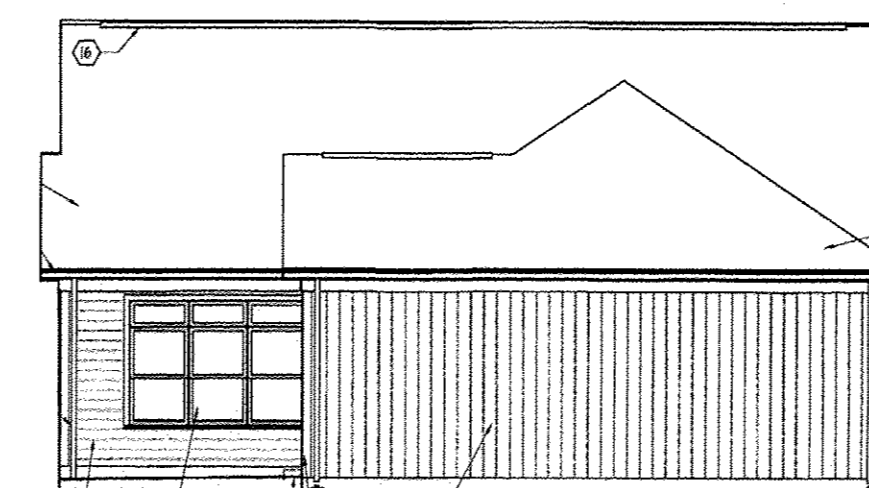
A ELEVATION  
BASEMENT WITH  
SCREENED PORCH  
(NOT TO SCALE)



B ELEVATION  
BASEMENT WITH  
SCREENED PORCH  
(NOT TO SCALE)

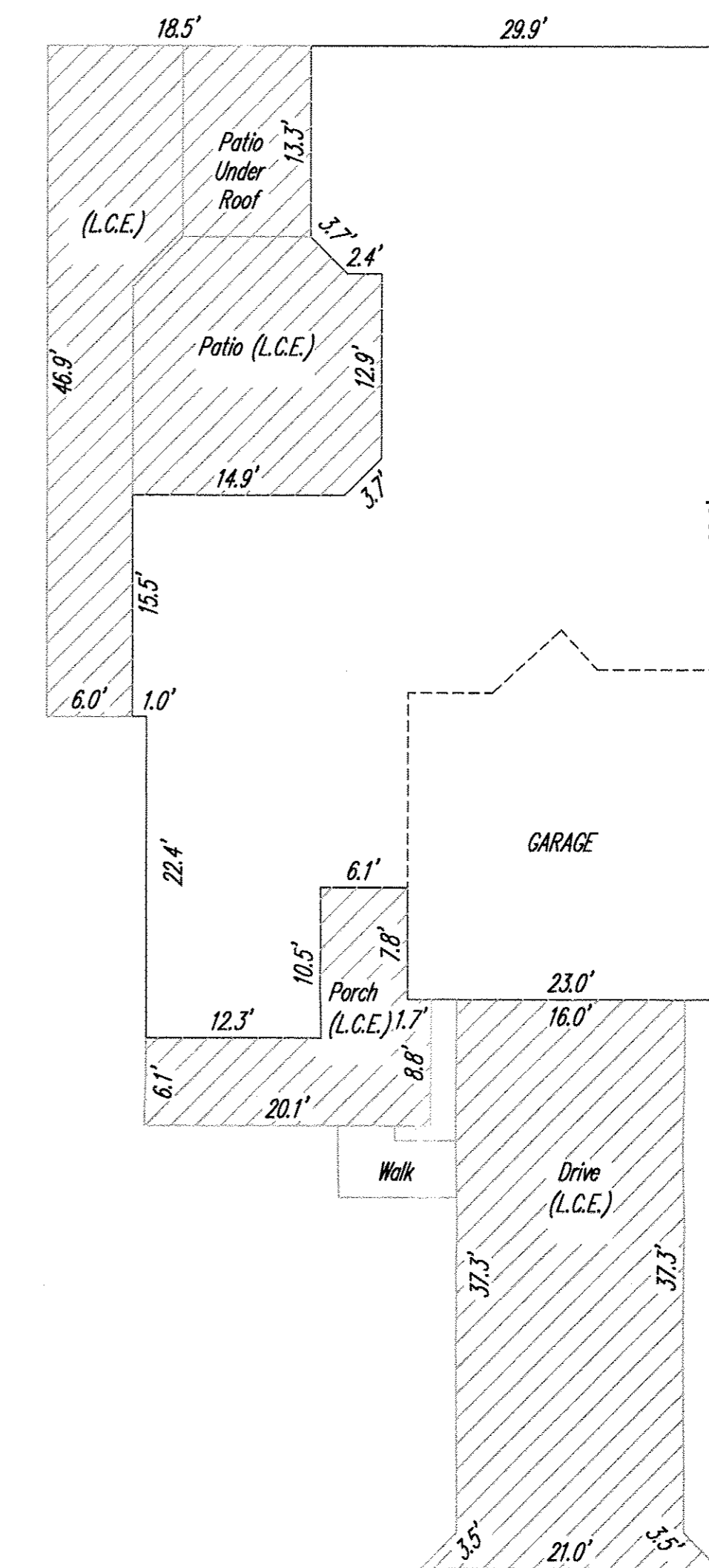


C ELEVATION  
BASEMENT WITH  
SCREENED PORCH  
(NOT TO SCALE)



D ELEVATION  
BASEMENT WITH  
SCREENED PORCH  
(NOT TO SCALE)

NOTE: ELEVATIONS FOR UNIT 560 TAKEN FROM PAGE A-604 OF PLANS PREPARED BY DEAN WENZ ARCHITECTS SHOWING ALTERNATE PORCH PLANS DATED 08/11/2010 NOT TO SCALE

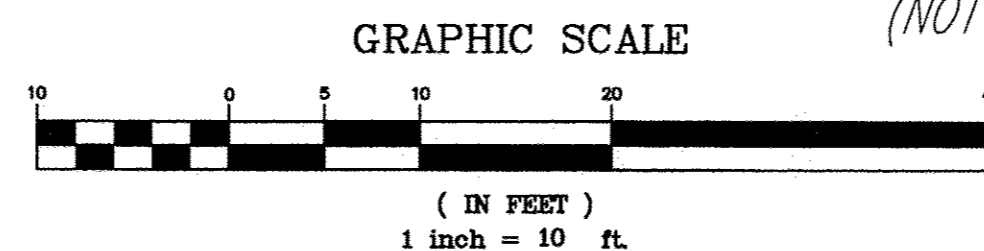


"Portico"  
UNIT 560  
WITH SCREENED PORCH  
(BASEMENT)  
FIN. FL. 640.08  
GARAGE FL. 638.80  
BASEMENT 630.58  
ROOF PEAK 662.1

Limited Common Elements  
(L.C.E.)

"Portico"  
UNIT 440  
(SLAB)  
FIN. FL. 638.75  
GARAGE FL. 638.26  
ROOF PEAK 662.75

Limited Common Elements  
(L.C.E.)

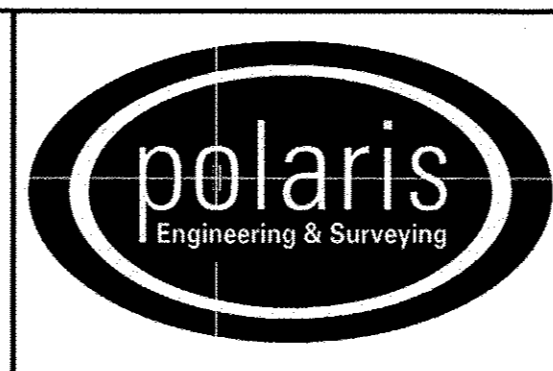


NOTE: ALL DIMENSIONS ARE EXTERIOR WALL DIMENSIONS OR INDICATE DISTANCE FROM THE EXTERIOR SURFACES OF THE OUTSIDE WALLS TO THE MIDDLE OF THE COMMON WALLS  
NOTE: L.C.E. = LIMITED COMMON ELEMENTS

REV. No.	DATE	BY	CHK'D

DATE: 10/05/2012  
SCALE: HOR. 1"=10'  
VERT. 1"=0'  
FOLDER: 07-013\dwg\plate  
FILENAME: condo\_plate\_8  
TAB: condo\_8-3  
DRAWN: mps

QUARRY LAKES AT AMHERST  
CONDOMINIUM PHASE 8  
PART OF ORIGINAL AMHERST TOWNSHIP LOT 21  
CITY OF AMHERST - LORAIN COUNTY - OHIO



POLARIS ENGINEERING & SURVEYING, INC.  
34600 CHARDON ROAD - SUITE D  
WILLOUGHBY HILLS, OHIO 44094  
(440) 944-4433 (440) 944-3722 (Fax)  
www.polaris-es.com

DECLARATION OF  
CONDOMINIUM  
PHASE 8

CONTRACT No.	
07-013	
SHEET	OF
04	04