

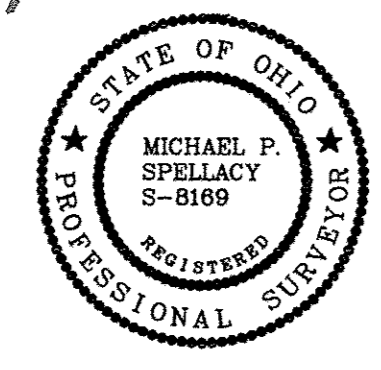
SIXTH AMENDMENT TO
 DECLARATION OF CONDOMINIUM FOR
 QUARRY LAKES AT AMHERST CONDOMINIUM
 BEING A PART OF ORIGINAL AMHERST TOWNSHIP LOT NUMBER 21,
 NOW IN THE CITY OF AMHERST - LORAIN COUNTY - STATE OF OHIO
 MAY 25, 2012 SCALE 1 INCH = 60 FEET

EXHIBIT B
 ADDING UNITS AS CONSTRUCTED:
 UNIT 581

GRANTOR: AMHERST CONDOMINIUMS, L.L.C.

I HEREBY CERTIFY THAT THIS DRAWING ACCURATELY REFLECTS THE LOCATION OF
 IMPROVEMENTS AND RECORDED EASEMENTS REFLECTED IN FIDELITY NATIONAL TITLE INSURANCE
 COMPANY A.L.T.A. POLICY COMMITMENT FC06-1086 DATED OCTOBER 9, 2007

Michael P. Spellacy 7/6/2012
 MICHAEL P. SPELLACY P.S. #8169 DATE



I HEREBY CERTIFY THAT THESE DRAWINGS ACCURATELY SHOW EACH BUILDING AS
 BUILT OR CONSTRUCTED.

C.W. Szucs 7-8-12
 CHARLES W. SZUCS, P.E. #66526 DATE



ACREAGE BREAKDOWN:

ACREAGE OF UNIT 581 0.0501 ACRES
 ACREAGE OF COMMON ELEMENTS OUTSIDE OF BUILDINGS
 (NOT INCLUDING COMMON ELEMENTS UNDER BUILDINGS) 0.0429 ACRES
 ACREAGE OF PARCEL B 0.1281 ACRES

TOTAL AREA OF LAND DECLARED 0.2211 ACRES
 PREVIOUSLY DECLARED 8.2952 ACRES
 ADDITIONAL LANDS AMHERST CONDOMINIUMS LLC 8.0766 ACRES
 LAND CONVEYED TO THE CITY OF AMHERST FOR
 DEDICATED ROADWAY 2.1352 ACRES
 (LESS 0.1194 ACRES
 OF PREVIOUSLY DECLARED LAND)
 2.0168 NET
 ADDITIONAL LANDS TJCO EAST LTD. 31.2134 ACRES
 TOTAL 49.8231 ACRES

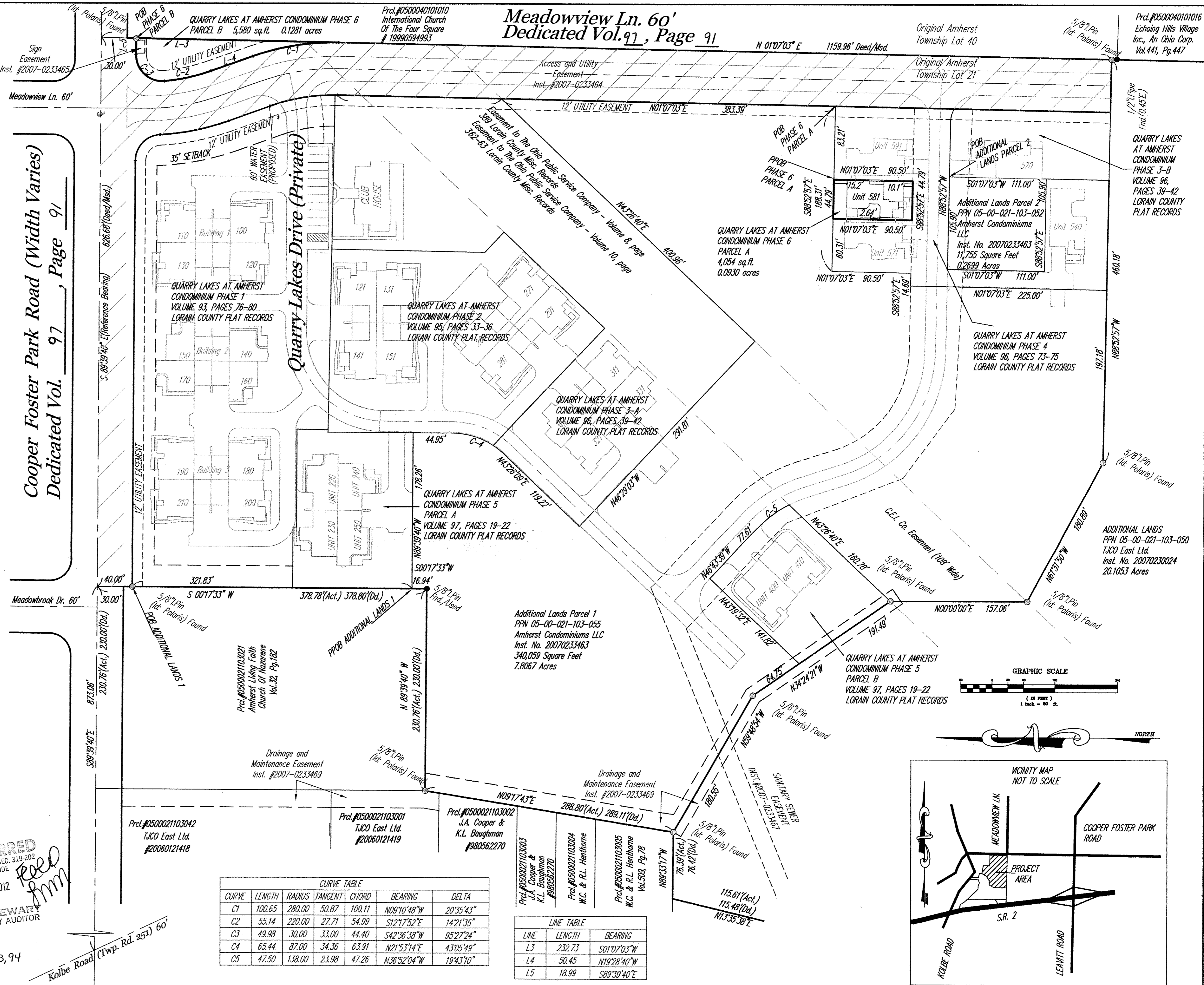
PERCENTAGE OF OWNERSHIP INTEREST
 QUARRY LAKES AT AMHERST CONDOMINIUM

UNIT NO.	PERCENTAGE OF OWNERSHIP IN COMMON AREAS
100	2.7778 % Phase 1
110	2.7778 %
120	2.7778 %
130	2.7778 %
140	2.7778 %
150	2.7778 %
160	2.7778 %
170	2.7778 %
180	2.7778 %
190	2.7778 %
200	2.7778 %
210	2.7778 %
121	2.7778 % Phase 2
131	2.7778 %
141	2.7778 %
151	2.7778 %
261	2.7778 %
271	2.7778 %
281	2.7778 %
291	2.7778 %
301	2.7778 % Phase 3
311	2.7778 %
321	2.7778 %
331	2.7778 %
570	3.3332 %
540	3.3332 % Phase 4
571	3.3332 %
591	3.3332 %
220	2.7778 % Phase 5
230	2.7778 %
240	2.7778 %
250	2.7778 %
400	2.7778 %
410	2.7778 %
581	3.3332 % Phase 6
DECLARED	100.0000%
REMAINDER OWNED BY DECLARANT TOTAL	0 100.00%

SURVEY LEGEND

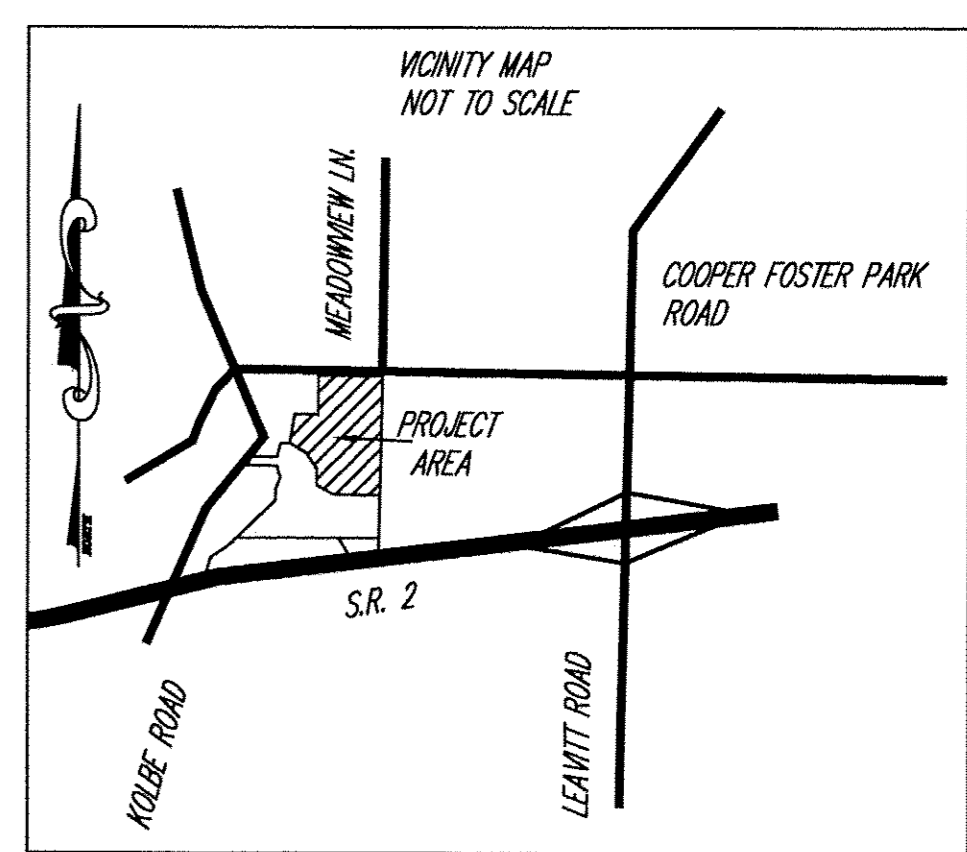
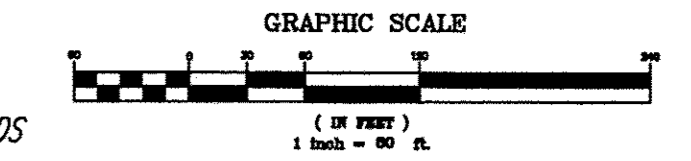
● 5/8" IRON PIN SET	A, ACT.	ACTUAL MEASUREMENT OR CALCULATION
○ IRON PIN/PIPE FOUND	U, USED	USED MEASUREMENT OR MONUMENT
M MON BOX FOUND WITH PIN/PIPE	M, MSD	MEASURED
■ MONUMENT BOX FOUND EMPTY	D, R, REC.	DEED OR RECORD
▲ SURVEY NAIL SET	CALC.	CALCULATED
△ SURVEY NAIL FOUND	C/L	CENTERLINE
● STONE/CONCRETE MONUMENT FOUND	O, OBS.	OBSERVED
○ DRILLHOLE SET	P.P.N.	PERMANENT PARCEL NUMBER
● DRILLHOLE FOUND		

TRANSFERRED
 IN COMPLIANCE WITH SEC. 319-202
 OHIO REV. CODE
 JUL 11 2012
Free mm
 MARK R. STEWART
 LORAIN COUNTY AUDITOR
 FIRST NATIONWIDE TITLE
 BY GAYLE CLARK
 Plat # 6147 Pgs 92, 93, 94



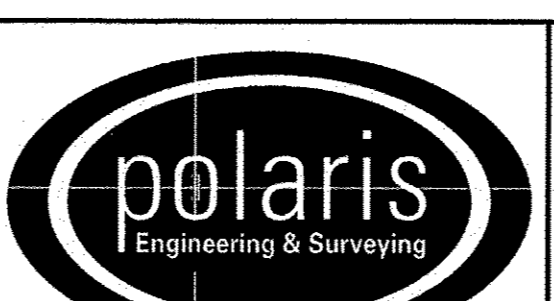
CURVE TABLE						
CURVE	LENGTH	RADIUS	TANGENT	CHORD	BEARING	DELTA
C1	100.65	280.00	50.87	100.11	N09°10'48"W	20°35'43"
C2	55.14	220.00	27.71	54.99	S12°17'52"E	14°21'35"
C3	49.98	30.00	33.00	44.40	S42°36'38"W	95°27'24"
C4	65.44	87.00	34.36	63.91	N21°53'14"E	43°05'49"
C5	47.50	138.00	23.98	47.26	N36°52'04"W	19°43'10"

LINE TABLE	
LINE	BEARING
L3	S01°07'03"W
L4	N19°28'40"W
L5	S89°39'40"E



REV. No.	DATE	BY	CHK'D

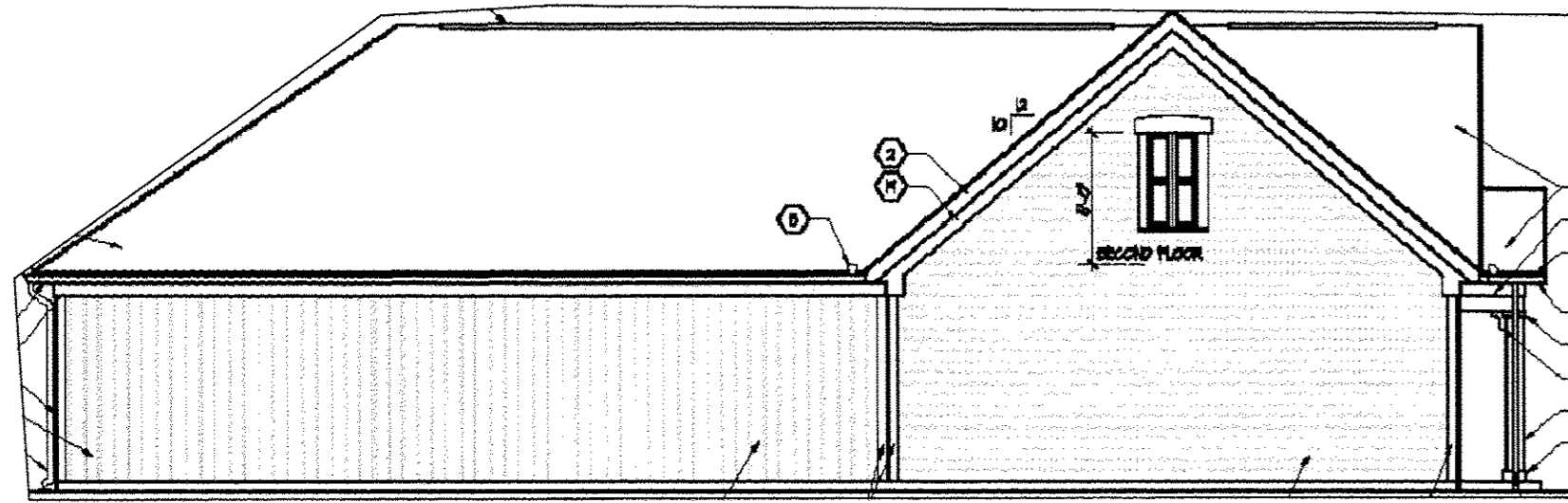
DATE: 06/27/2012
 SCALE: HOR. 1"=60'
 VERT. 1"=0'
 FOLDER: 07-013\dwg\plato
 FILENAME: condo plat phase 4
 TAB: condo 5-1
 DRAWN: mps



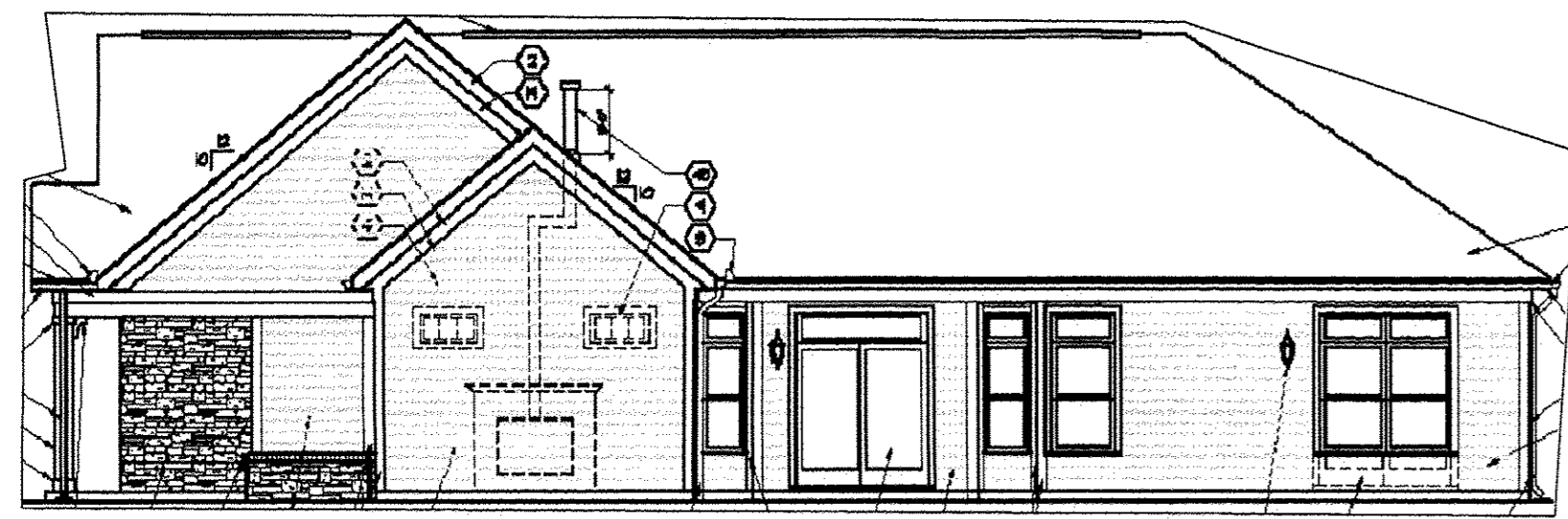
POLARIS ENGINEERING & SURVEYING, INC.
 34600 CHARDON ROAD - SUITE D
 WILLOUGHBY HILLS, OHIO 44094
 (440) 944-4433 (440) 944-3722 (Fax)
 www.polaris-es.com

DECLARATION OF
 CONDOMINIUM
 PHASE 6

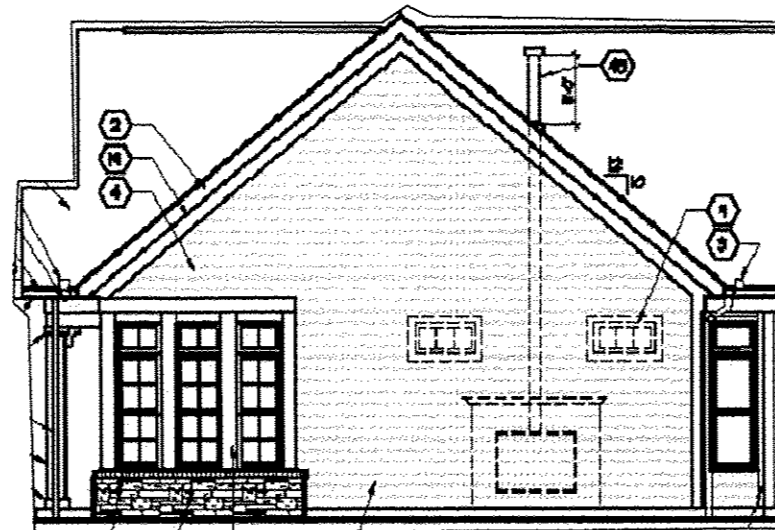
CONTRACT No.	
07-013	
SHEET	OF
01	03



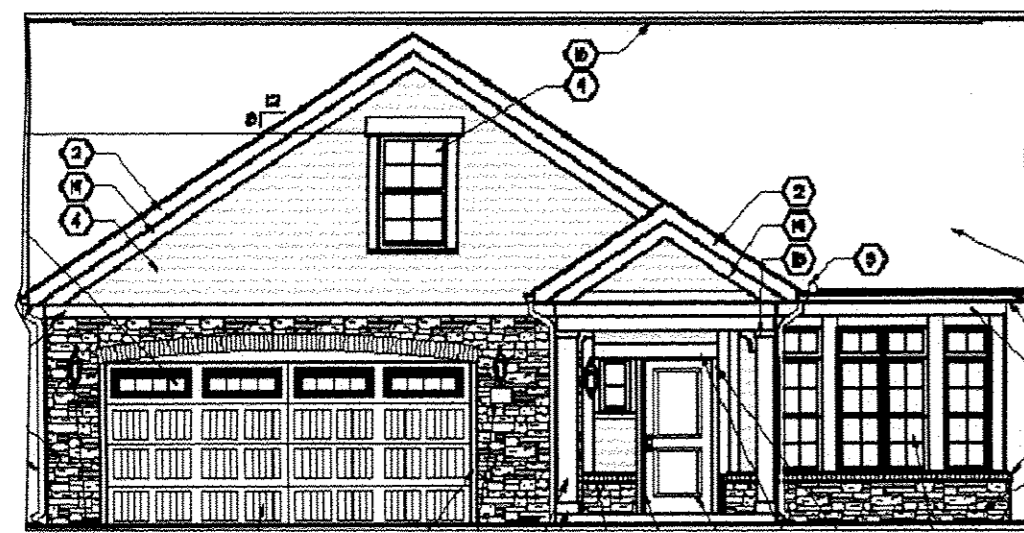
A ELEVATION
(NOT TO SCALE)



B ELEVATION
(NOT TO SCALE)

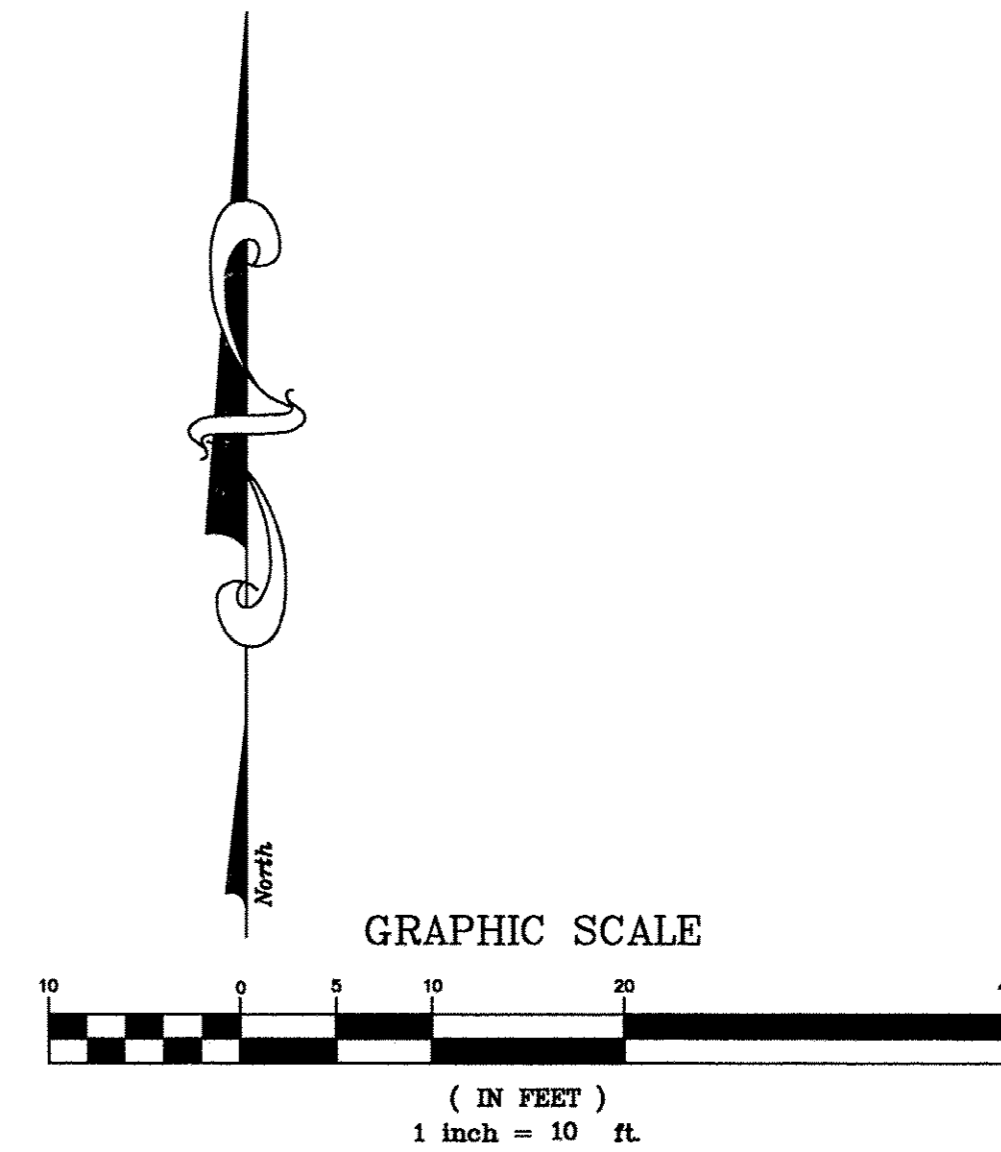
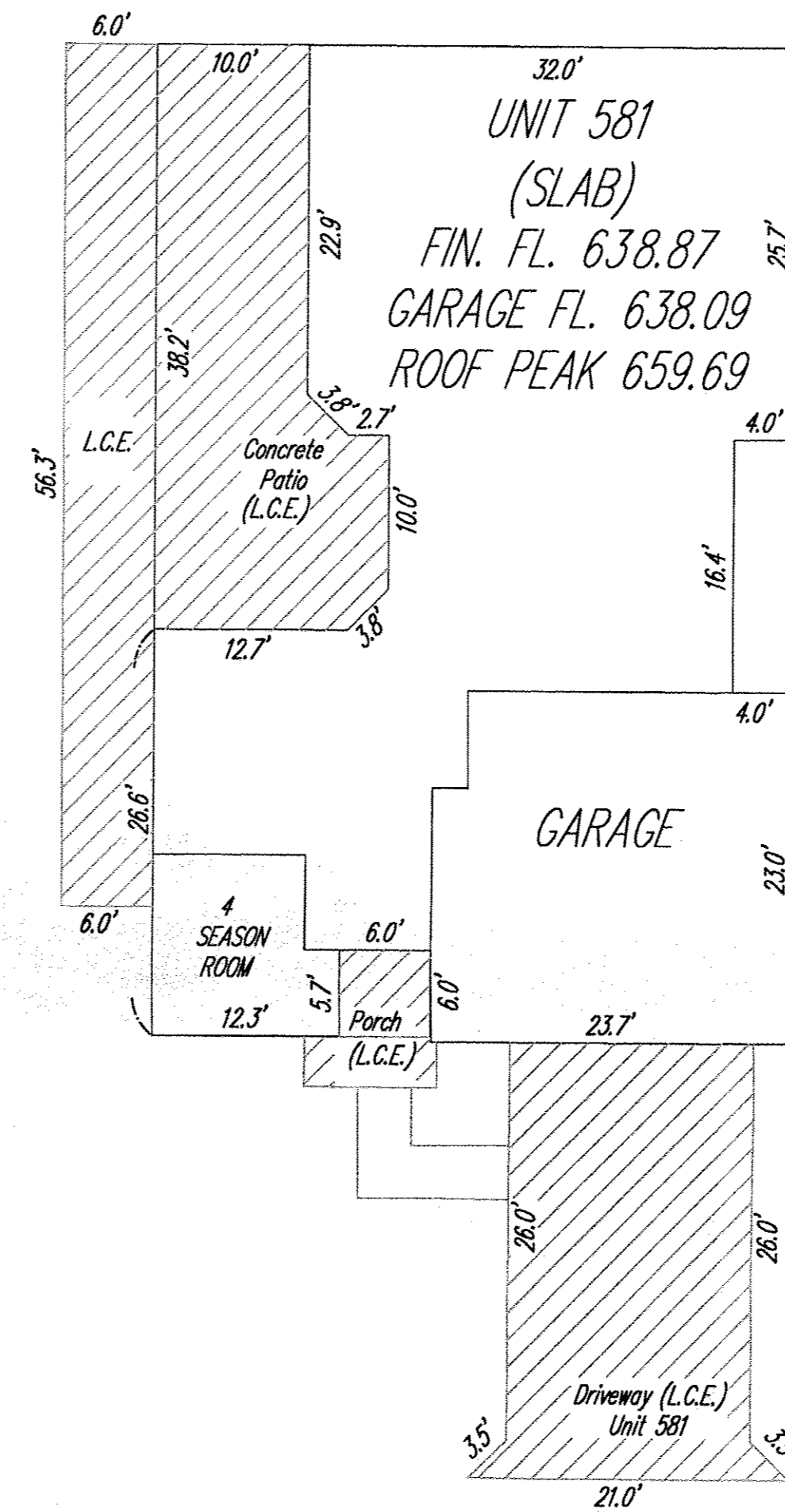


B ELEVATION (PARTIAL)
4 SEASONS OPTION
(NOT TO SCALE)



C ELEVATION
4 SEASONS OPTION
(NOT TO SCALE)

NOTE: ELEVATIONS FOR ALL UNITS TAKEN
FROM PAGE A-608 OF PLANS PREPARED
BY DEAN WENZ ARCHITECTS
DATED 08/09/2010 NOT TO SCALE

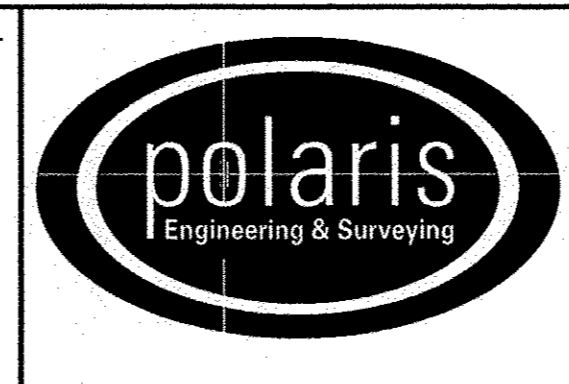


NOTE: ALL DIMENSIONS ARE EXTERIOR WALL DIMENSIONS
OR INDICATE DISTANCE FROM THE
EXTERIOR SURFACES OF THE OUTSIDE WALLS TO
THE MIDDLE OF THE COMMON WALLS
NOTE: L.C.E. = LIMITED COMMON ELEMENTS

REV. No.	DATE	BY	CHK'D

DATE: 06/27/2012
SCALE: HOR. 1"=10'
VERT. 1"=0'
FOLDER: g7-013\dwg\plans
FILENAME: condo_plat_phase_4
TAB: condo 5-3
DRAWN: mps

QUARRY LAKES AT AMHERST
CONDOMINIUM PHASE 6
PART OF ORIGINAL AMHERST TOWNSHIP LOT 21
CITY OF AMHERST - LORAIN COUNTY - OHIO



POLARIS ENGINEERING & SURVEYING, INC.
34600 CHARDON ROAD - SUITE D
WILLOUGHBY HILLS, OHIO 44094
(440) 944-4433 (440) 944-3722 (Fax)
www.polaris-es.com

DECLARATION OF
CONDOMINIUM
PHASE 6

CONTRACT No.	
07-013	
SHEET	OF
03	03