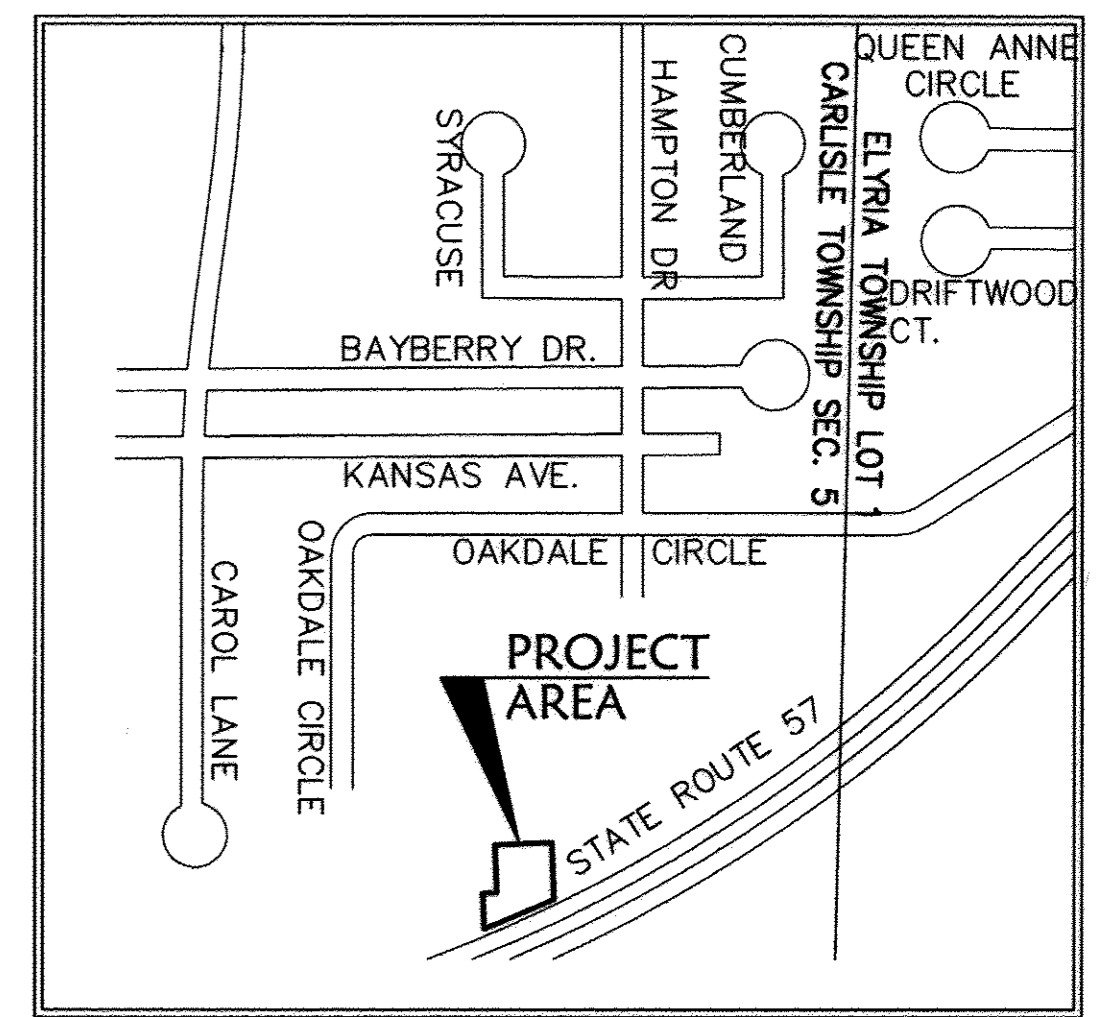
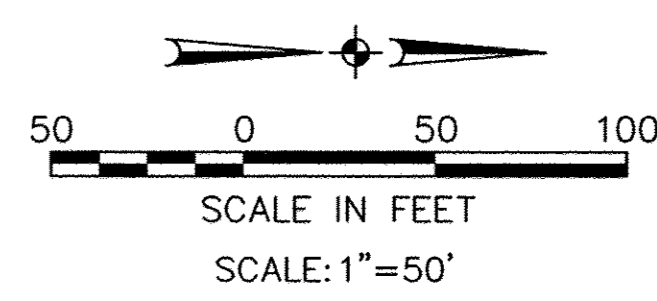
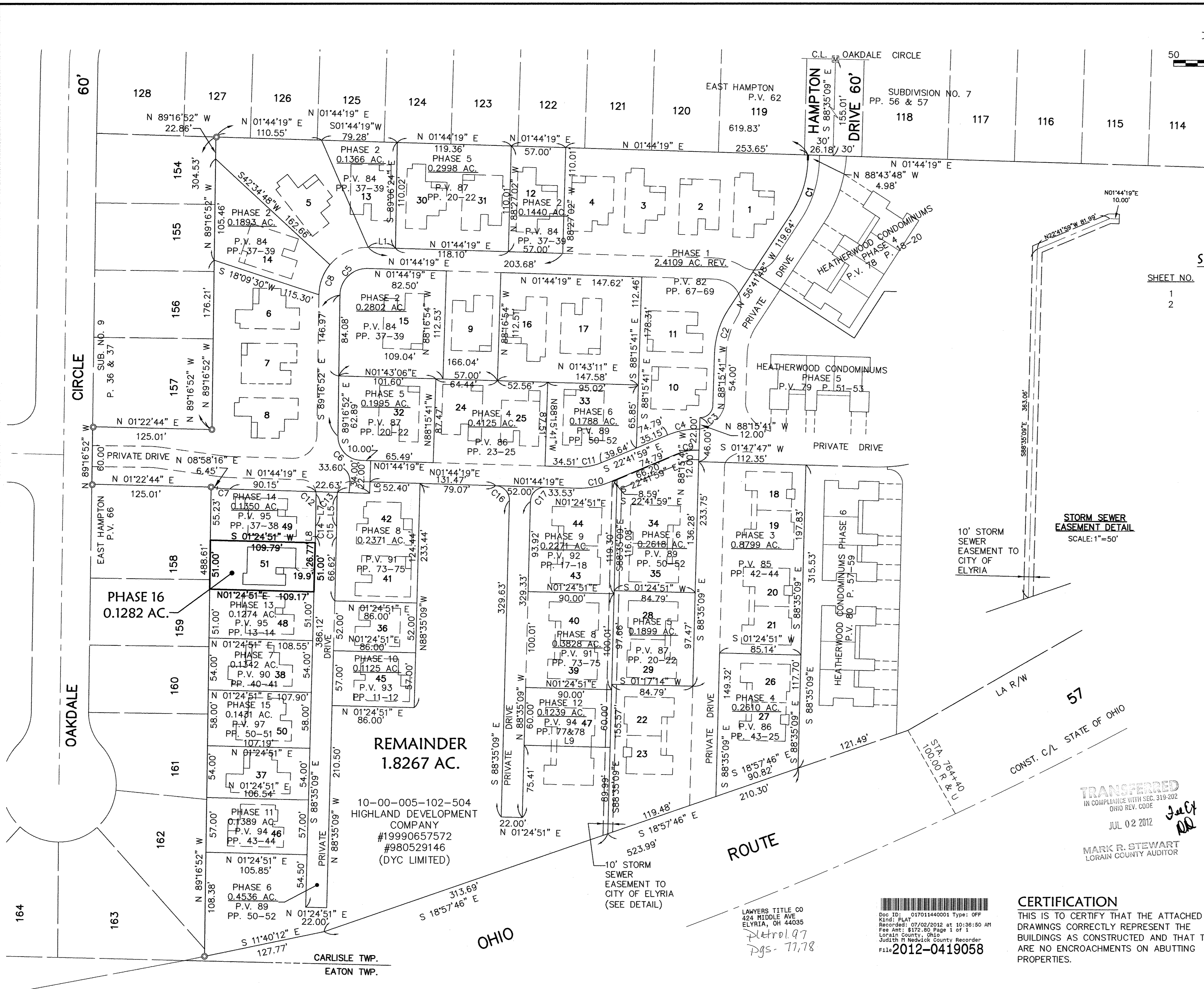


R:\04000\04142-CP16\Civil 3D 2012\CURRENT DRAWINGS\BASE DRAWINGS\CIVIL\16-PLAT01.dwg, 6/21/2012 8:36:05 AM



SHEET INDEX

SHEET NO.	DESCRIPTION
1	SURVEY MAP
2	FLOOR & FOUNDATION PLANS & ELEVATIONS

AREA MAP - NO SCALE

BEARING SYSTEM IS TAKEN FROM THE HEATHERWOOD PROJECT.

LINE DATA

LINE	DISTANCE	BEARING
L1	28.58'	N 01'44'19" E
L2	8.29'	S 89'06'24" E
L3	3.79'	N 00'53'36" E
L4	9.11'	N 66'18'03" E
L5	31.84'	S 89'12'58" E
L6	12.00'	N 88'15'41" W
L7	32.85'	S 89'12'58" E
L8	6.62'	S 88'35'09" E
L9	90.00'	N 01'24'51" E

LEGEND

- ⊙ - IRON PIN/PIPE FOUND
- ⊠ - MONUMENT BOX FOUND
- - 5/8" CAPPED REBAR SET
- - PK NAIL SET

PHASE 16 TOTAL = 0.1282 AC.

CURVE DATA

CURVE	RADIUS	LENGTH	TANGENT	DELTA	CHORD	BEARING
C1	105.63'	59.06'	30.32'	32'02'01"	58.29'	N72'42'48"W
C2	88.73'	48.88'	25.08'	31'33'53"	48.27'	S72'28'44"E
C3	13.00'	20.42'	13.00'	90'00'00"	18.38'	N43'15'41"W
C4	81.00'	34.55'	17.54'	24'26'18"	34.29'	S10'28'50"E
C5	28.00'	44.48'	28.50'	91'01'11"	39.95'	N43'46'16"W
C6	25.00'	38.82'	24.56'	88'58'49"	35.04'	S46'13'44"W
C7	125.62'	13.25'	6.63'	6'02'35"	13.24'	N04'51'23"E
C8	50.00'	34.04'	17.71'	39'00'21"	33.39'	S69'46'41"E
C9	59.00'	25.17'	12.78'	24'26'18"	24.97'	N10'28'50"W
C10	81.00'	34.55'	17.54'	24'26'18"	34.29'	S10'28'50"E
C11	59.00'	25.17'	12.78'	24'26'18"	24.97'	N10'28'50"W
C12	15.00'	2.74'	1.37'	10'26'51"	2.73'	N85'34'18"E
C13	15.00'	3.38'	1.70'	12'54'42"	3.37'	S82'45'44"E
C14	973.95'	10.88'	5.44'	00'38'24"	10.88'	S88'54'03"E
C15	1033.24'	11.12'	5.56'	00'37'00"	11.12'	S88'54'03"E
C16	15.00'	23.47'	14.91'	89'39'32"	21.15'	S46'34'35"W
C17	15.00'	23.64'	15.08'	90'18'26"	21.27'	S43'25'25"E

STORM SEWER EASEMENT DETAIL
SCALE: 1"=50'

10' STORM SEWER EASEMENT TO CITY OF ELYRIA

REMAINDER 1.8267 AC.

10-00-005-102-504
HIGHLAND DEVELOPMENT COMPANY
#19990657572
#980529146
(DYC LIMITED)

TRANSFERRED
IN COMPLIANCE WITH SEC. 319-202
OHIO REV. CODE
JUL 02 2012
MARK R. STEWART
LORAIN COUNTY AUDITOR

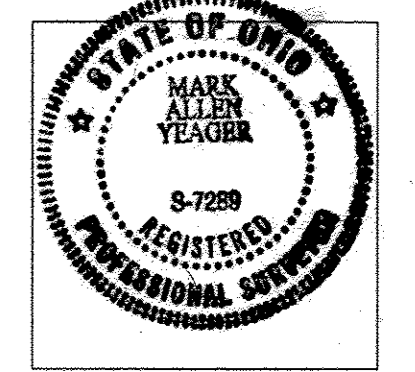
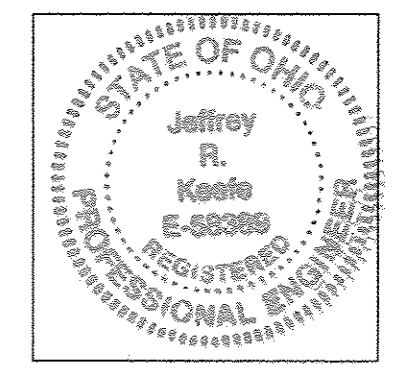
ROUTE 57

LAWYERS TITLE CO
424 MIDDLE AVE
ELYRIA, OH 44035
Litrol 97
pgs - 77,78
2012-0419058

CERTIFICATION
THIS IS TO CERTIFY THAT THE ATTACHED DRAWINGS CORRECTLY REPRESENT THE BUILDINGS AS CONSTRUCTED AND THAT THERE ARE NO ENCROACHMENTS ON ADJUTING PROPERTIES.

Jeffrey R. Keeffe 6/21/2012
JEFFREY R. KEEFFE
PROFESSIONAL ENGINEER NO. 58389

Mark A. Yeager 6/21/12
MARK A. YEAGER
PROFESSIONAL SURVEYOR NO. 7289

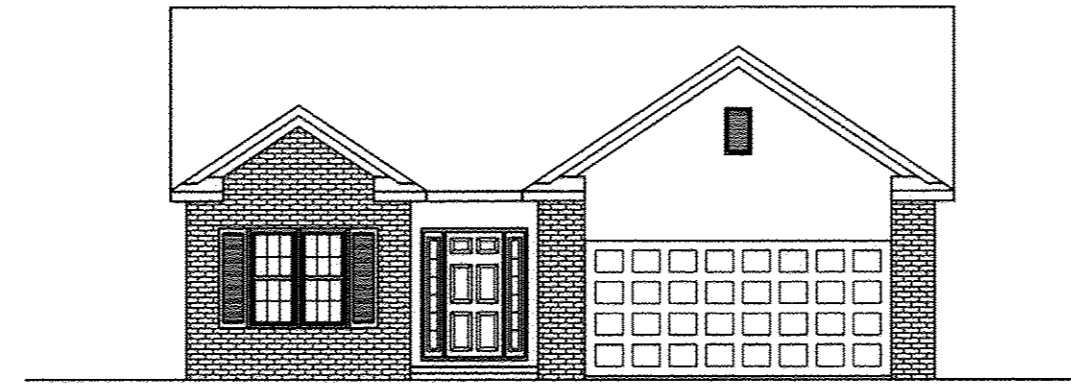


DATE:	06-19-12	DATE	DESCRIPTION	BY
DRAWN BY:	ABR			
CHK'D BY:				
DWG. NAME:	16-PLAT01			
PATH:	04000\04142-CP16			
F.B.:	868			

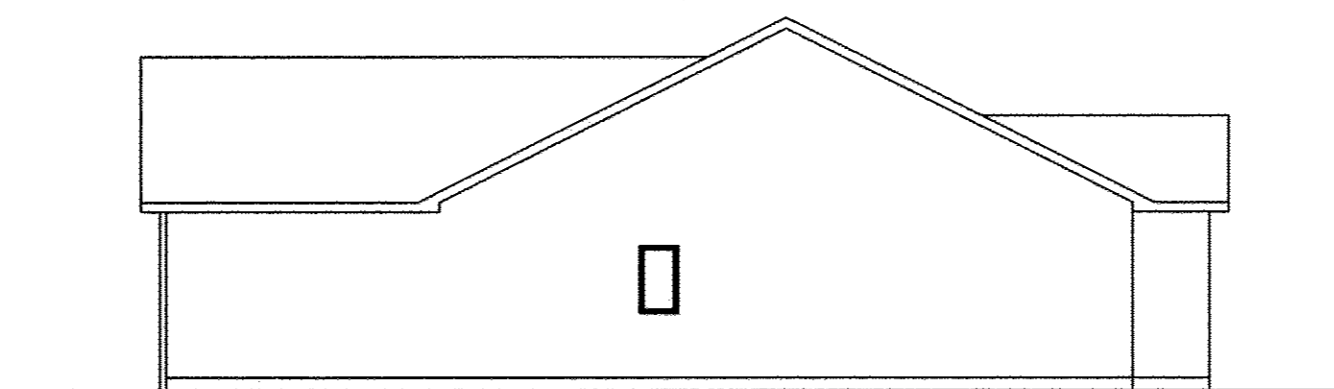
KS ASSOCIATES
KS Associates, Inc.
260 Burns Road, Suite 100
Elyria, OH 44035
P 440 365 4730
F 440 365 4790
www.ksassociates.com

CHESAPEAKE CONDOMINIUM PHASE NO. 16
PART OF ORIGINAL CARLISLE TOWNSHIP SECTION NO. 5
CITY OF ELYRIA COUNTY OF LORAIN STATE OF OHIO

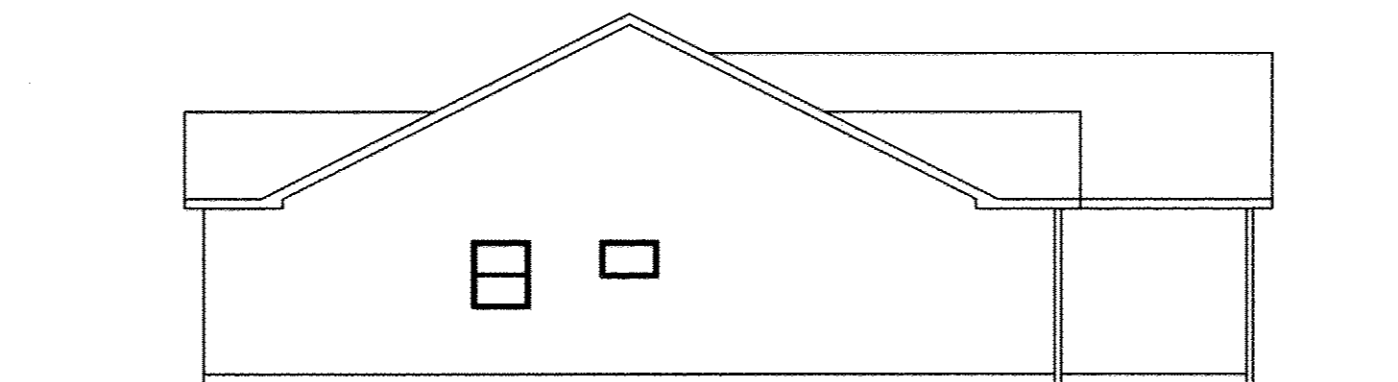
SHEET 1	OF 2
JOB NO. 04142-CP16	



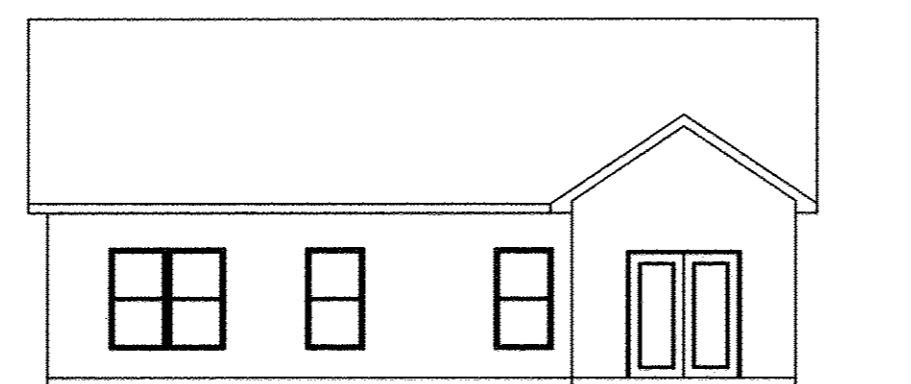
FRONT ELEVATION
CHESAPEAKE MODEL



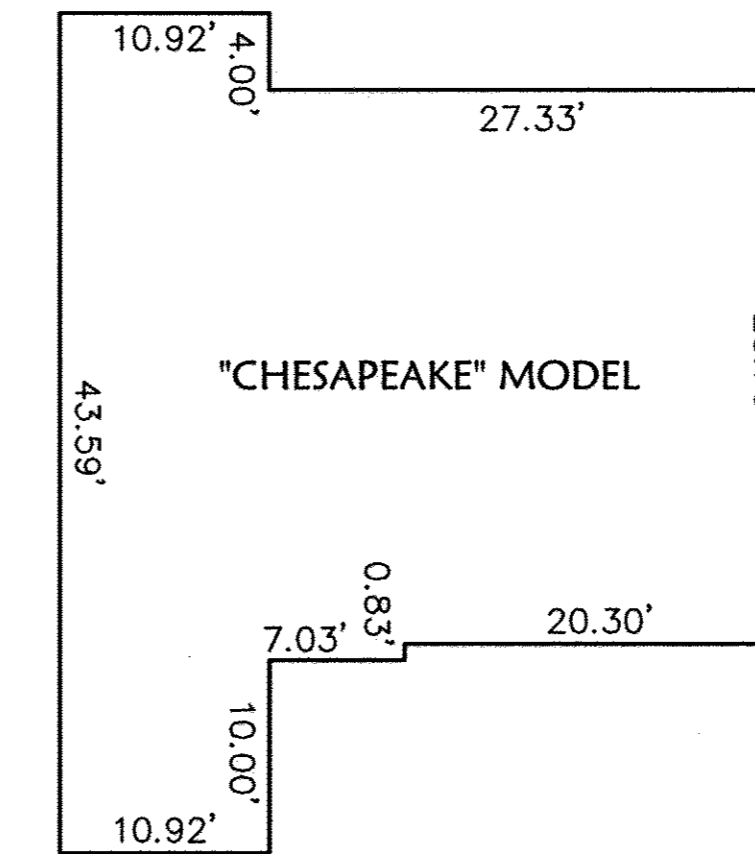
RIGHT SIDE ELEVATION



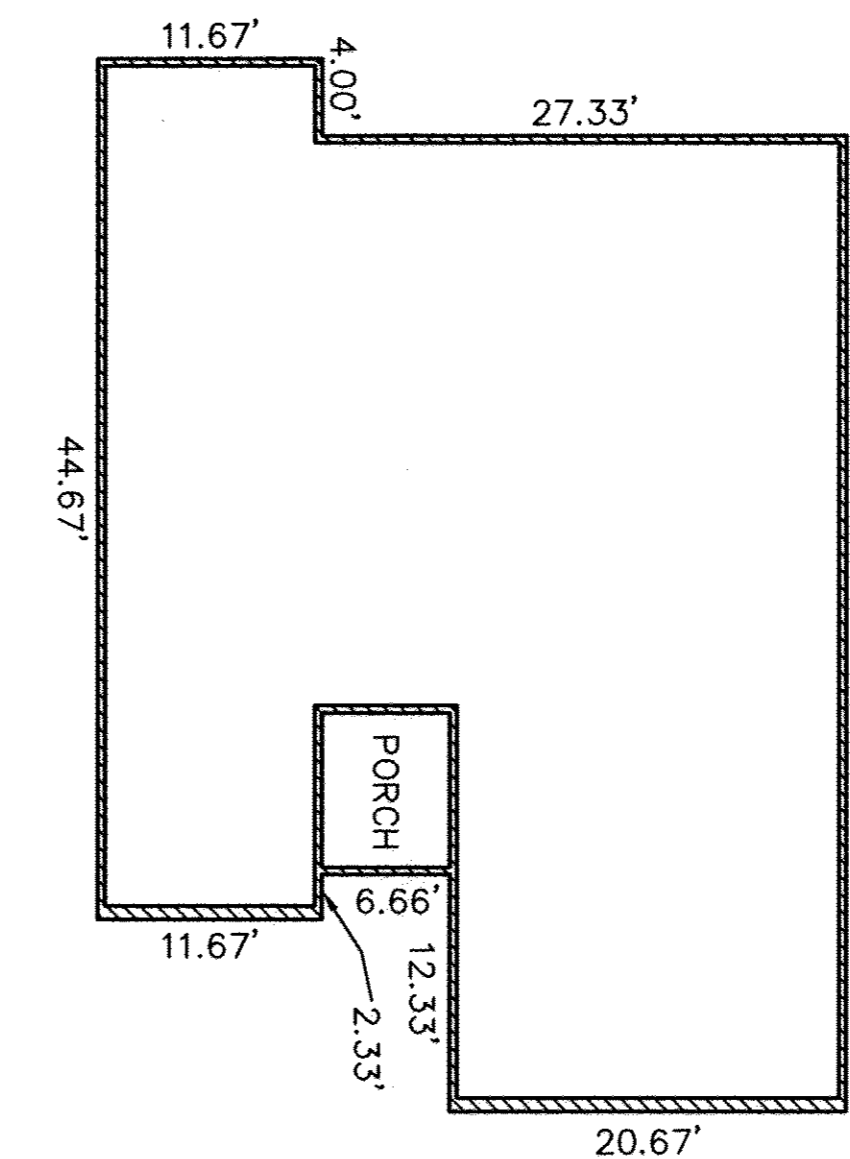
LEFT SIDE ELEVATION



REAR ELEVATION



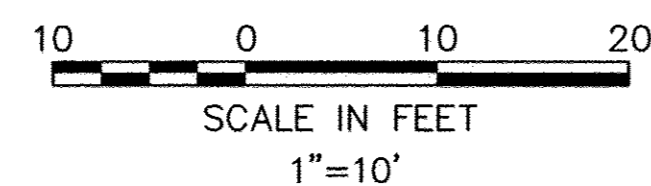
FIRST FLOOR PLAN
(INTERIOR DIMENSIONS)



FOUNDATION PLAN
(EXTERIOR DIMENSIONS)

OWNERSHIP PERCENTAGES

UNIT NO.	SQ. FT.	ELEV. F.F.	% OWNERSHIP
1	1427.16	748.93	1.9646
2	1645.51	749.08	2.2652
3	1427.16	749.45	1.9646
4	1637.92	749.47	2.2548
5	1427.16	749.50	1.9646
6	1427.16	749.44	1.9646
7	1645.51	749.42	2.2652
8	1427.16	749.44	1.9646
9	1645.51	749.84	2.2652
10	1637.92	749.45	2.2548
11	1645.51	748.48	2.2652
12	1427.16	749.86	1.9646
13	1645.51	749.53	2.2652
14	1645.51	749.39	2.2652
15	1645.51	749.69	2.2652
16	1427.16	749.36	1.9646
17	1645.51	749.23	2.2652
18	1154.56	749.35	1.5894
19	1305.39	749.35	1.7970
20	1154.56	749.41	1.5894
21	1154.56	749.41	1.5894
22	1305.39	750.46	1.7970
23	1154.56	750.46	1.5894
24	1645.51	749.53	2.2652
25	1207.46	749.20	1.6622
26	1305.39	749.81	1.7970
27	1154.56	749.81	1.5894
28	1305.39	750.04	1.7970
29	1305.39	750.04	1.7970
30	1427.16	749.50	1.9646
31	1645.51	749.70	2.2652
32	1645.51	749.35	2.2652
33	1645.51	749.07	2.2652
34	1305.39	749.17	1.7970
35	1305.39	749.17	1.7970
36	1207.46	749.26	1.6622
37	1427.16	749.44	1.9646
38	1427.16	749.36	1.7970
39	1305.39	749.84	1.7970
40	1305.39	749.84	1.7970
41	1645.51	749.45	2.2652
42	1460.23	749.69	2.0102
43	1305.39	749.38	1.7970
44	1305.39	749.38	1.7970
45	1474.73	749.33	2.0301
46	1474.73	749.67	2.0301
47	1305.39	749.98	1.7970
48	1267.85	749.33	1.7453
49	1267.85	749.58	1.7453
50	1637.92	749.36	2.2548
51	1267.85	749.38	1.7453
TOTAL	71,374.78 S.F.		100.00%



DATE	DATE	DESCRIPTION	BY
06-19-12			
06-19-12			
06-19-12			
06-19-12			
06-19-12			
06-19-12			
06-19-12			
06-19-12			
06-19-12			
06-19-12			

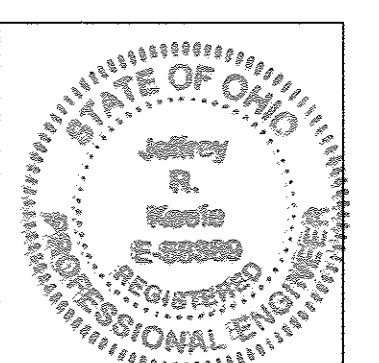
KS
KS ASSOCIATES

KS Associates, Inc.
260 Burns Road, Suite 100
Elyria, OH 44035
P 440 365 4730
F 440 365 4790
www.ksassociates.com

CHESAPEAKE CONDOMINIUM
PHASE NO. 16
PART OF
ORIGINAL CARLISLE TOWNSHIP SECTION NO. 5
CITY OF ELYRIA COUNTY OF LORAIN STATE OF OHIO

SHEET
2
OF
2
JOB NO.
04142-CP16

Jeffrey R. Keefe 6/21/12
JEFFREY R. KEEFE
PROFESSIONAL ENGINEER NO. 58389



Mark A. Yeager 6/21/12
MARK A. YEAGER
PROFESSIONAL SURVEYOR NO. 7289

