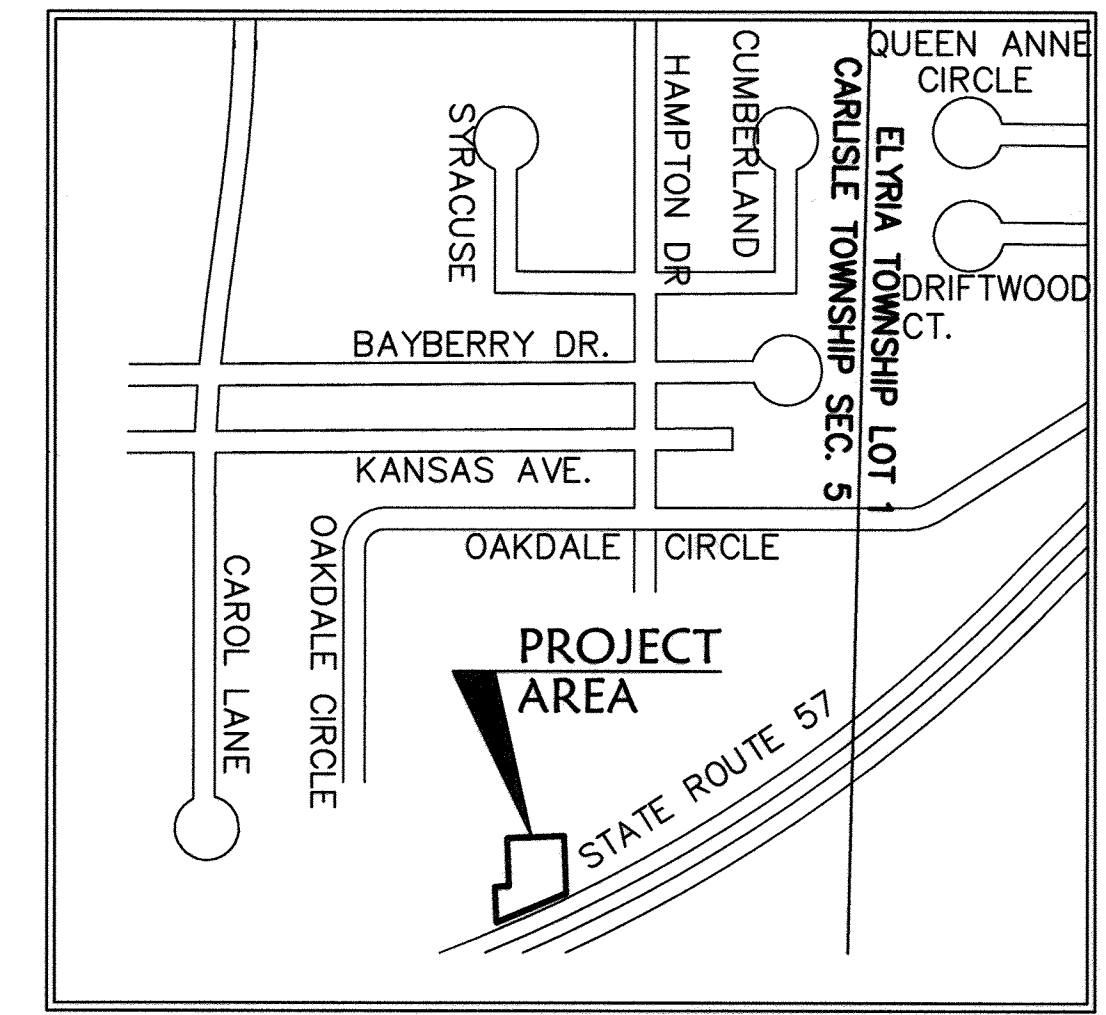
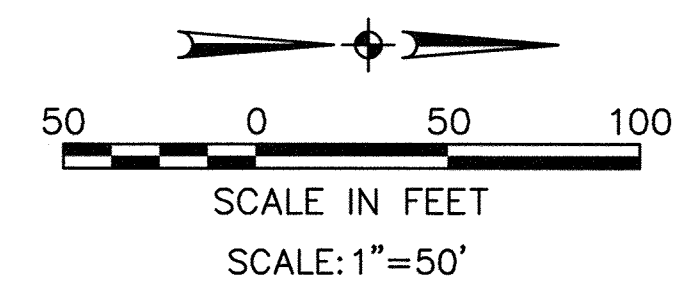


R:\04000\04142-CP15\LDDT\control\dwg\15-PLAT01-Rev-01.11.12.dwg 1/13/2012 9:26:02 AM EST



SHEET INDEX

SHEET NO.	DESCRIPTION
1	SURVEY MAP
2	FLOOR & FOUNDATION PLANS & ELEVATIONS

AREA MAP - NO SCALE

BEARING SYSTEM IS TAKEN FROM THE HEATHERWOOD PROJECT.

LINE DATA

LINE	DISTANCE	BEARING
L1	28.58'	N 01°44'19" E
L2	8.29'	S 89°06'24" E
L3	3.79'	N 00°53'36" E
L4	9.11'	N 66°18'03" E
L5	31.84'	S 89°12'58" E
L6	12.00'	N 88°15'41" W
L7	32.85'	S 89°12'58" E
L8	6.62'	S 88°35'09" E
L9	90.00'	N 01°24'51" E

LEGEND

- - IRON PIN/PIPE FOUND
- ⊕ - MONUMENT BOX FOUND
- - 5/8" CAPPED REBAR SET
- PK NAIL SET

PHASE 15 TOTAL = 0.1431 AC.

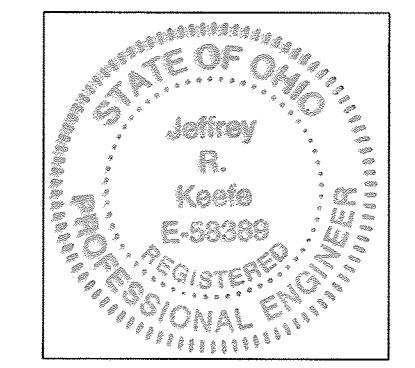
CURVE DATA

CURVE	RADIUS	LENGTH	TANGENT	DELTA	CHORD	BEARING
C1	105.63'	59.06'	30.32'	32°02'01"	58.29'	N72°42'48"W
C2	88.73'	48.88'	25.08'	31°33'53"	48.27'	S72°28'44"E
C3	13.00'	20.42'	13.00'	90°00'00"	18.38'	N43°15'41"W
C4	81.00'	34.55'	17.54'	24°26'18"	34.29'	S10°28'50"E
C5	28.00'	44.48'	28.50'	91°01'11"	39.95'	N43°46'16"W
C6	25.00'	38.82'	24.56'	88°58'49"	35.04'	S46°13'44"W
C7	125.62'	13.25'	6.63'	6°02'35"	13.24'	N04°51'23"E
C8	50.00'	34.04'	17.71'	39°00'21"	33.39'	S69°46'41"E
C9	59.00'	25.17'	12.78'	24°26'18"	24.97'	N10°28'50"W
C10	81.00'	34.55'	17.54'	24°26'18"	34.29'	S10°28'50"E
C11	59.00'	25.17'	12.78'	24°26'18"	24.97'	N10°28'50"W
C12	15.00'	2.74'	1.37'	10°26'51"	2.73'	N85°34'18"E
C13	15.00'	3.38'	1.70'	12°54'42"	3.37'	S82°45'44"E
C14	973.95'	10.88'	5.44'	00°38'24"	10.88'	S88°54'03"E
C15	1033.24'	11.12'	5.56'	00°37'00"	11.12'	S88°54'03"E
C16	15.00'	23.47'	14.91'	89°39'32"	21.15'	S46°34'35"W
C17	15.00'	23.64'	15.08'	90°18'26"	21.27'	S43°25'25"E

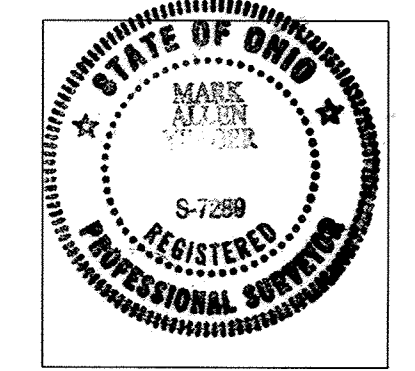
STORM SEWER EASEMENT DETAIL
SCALE: 1"=50'

TOTAL REMAINDER 1.9549 AC.
10-00-005-102-504
HIGHLAND DEVELOPMENT COMPANY
#19990657572
#980529146
(DYC LIMITED)

TRANSFERRED IN COMPLIANCE WITH SEC. 319-202 OHIO REV. CODE
FEB 28 2012
MARK R. STEWART
LORAIN COUNTY AUDITOR



Jeffrey R. Keeffe 2/28/12
JEFFREY R. KEEFFE
PROFESSIONAL ENGINEER NO. 58389



Mark A. Yeager 2/2/12
MARK A. YEAGER
PROFESSIONAL SURVEYOR NO. 7289

CERTIFICATION

THIS IS TO CERTIFY THAT THE ATTACHED DRAWINGS CORRECTLY REPRESENT THE BUILDINGS AS CONSTRUCTED AND THAT THERE ARE NO ENCROACHMENTS ON ADJACENT PROPERTIES.

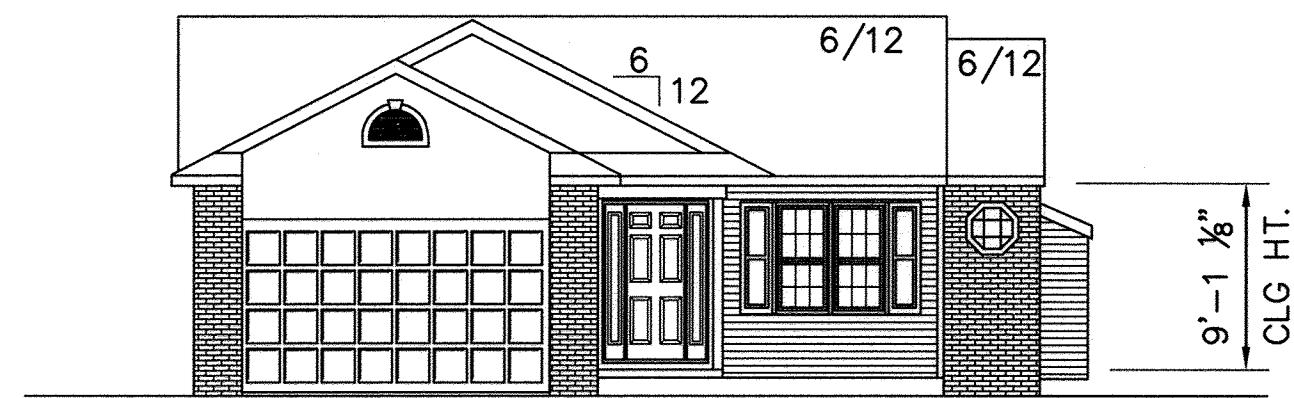
LAWYERS TITLE CO
424 MIDDLE AVE
ELYRIA, OH 44035
VOL 97
PG 50-51
2012-0403492

DATE	DESCRIPTION	BY
01-11-2012		
01-11-2012	DATE	DESCRIPTION
01-11-2012	DESCRIPTION	BY

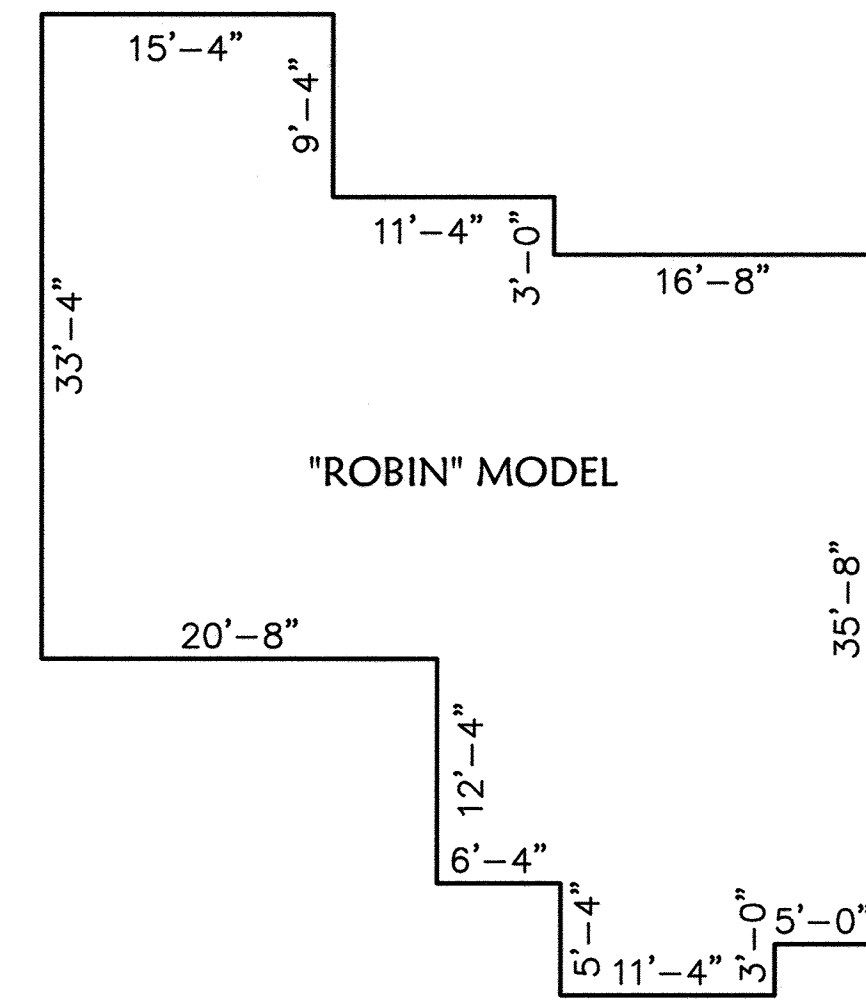
CHESAPEAKE CONDOMINIUM PHASE NO. 15
PART OF ORIGINAL CARLISLE TOWNSHIP SECTION NO. 5 CITY OF ELYRIA COUNTY OF LORAIN STATE OF OHIO

SHEET 1	OF 2
JOB NO. 04142-CP15A	

R:\04000\04142-CP15\LDDT\CONTROL.dwg 15-PLAN01-Rev-01.11.12.dwg 1/13/2012 9:14:26 AM EST



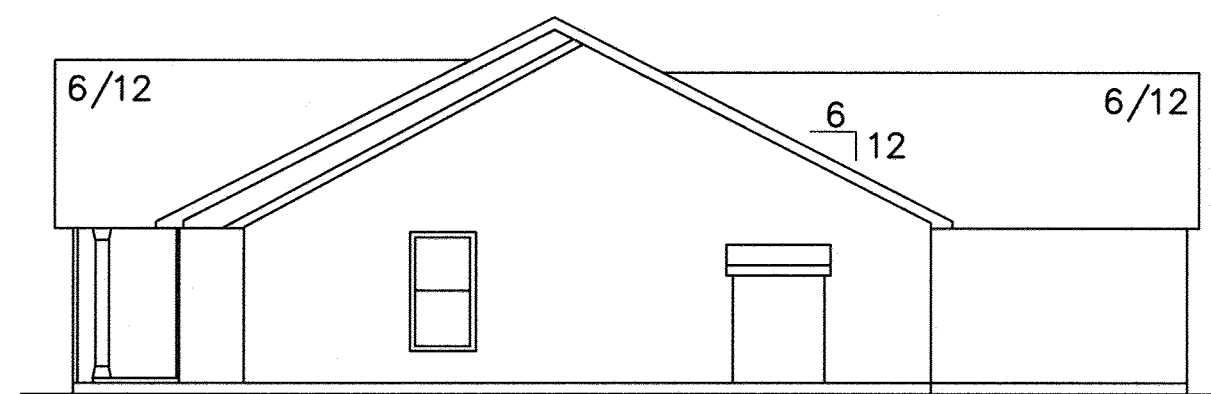
FRONT ELEVATION
ROBIN MODEL



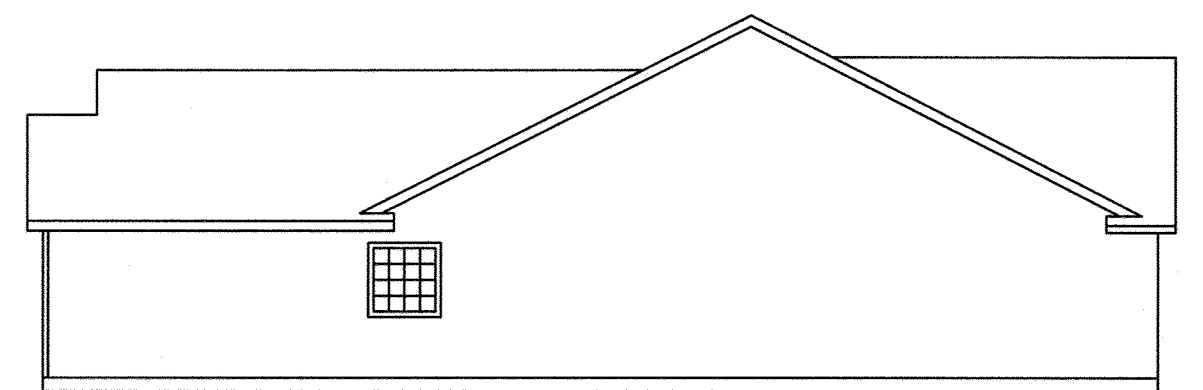
FIRST FLOOR PLAN
(INTERIOR DIMENSIONS)

OWNERSHIP PERCENTAGES

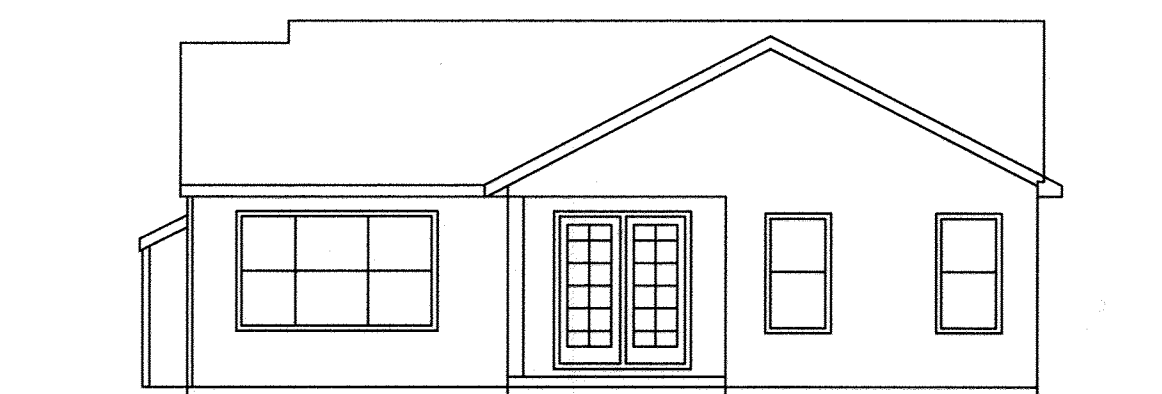
UNIT NO.	SQ. FT.	ELEV. F.F.	% OWNERSHIP
1	1427.16	748.93	1.9995
2	1645.51	749.08	2.3055
3	1427.16	749.45	1.9995
4	1637.92	749.47	2.2948
5	1427.16	749.50	1.9995
6	1427.16	749.44	1.9995
7	1645.51	749.42	2.3055
8	1427.16	749.44	1.9995
9	1645.51	749.84	2.3055
10	1637.92	749.45	2.2948
11	1645.51	748.48	2.3055
12	1427.16	749.86	1.9995
13	1645.51	749.53	2.3055
14	1645.51	749.39	2.3055
15	1645.51	749.69	2.3055
16	1427.16	749.36	1.9995
17	1645.51	749.23	2.3055
18	1154.56	749.35	1.6176
19	1305.39	749.35	1.8289
20	1154.56	749.41	1.6176
21	1154.56	749.41	1.6176
22	1305.39	750.46	1.8289
23	1154.56	750.46	1.6176
24	1645.51	749.53	2.3055
25	1207.46	749.20	1.6917
26	1305.39	749.81	1.8289
27	1154.56	749.81	1.6176
28	1305.39	750.04	1.8289
29	1305.39	750.04	1.8289
30	1427.16	749.50	1.9995
31	1645.51	749.70	2.3055
32	1645.51	749.35	2.3055
33	1645.51	749.07	2.3055
34	1305.39	749.17	1.8289
35	1305.39	749.17	1.8289
36	1207.46	749.26	1.6917
37	1427.16	749.44	1.9995
38	1427.16	749.36	1.9995
39	1305.39	749.84	1.8289
40	1305.39	749.84	1.8289
41	1645.51	749.45	2.3055
42	1460.23	749.69	2.0459
43	1305.39	749.38	1.8289
44	1305.39	749.38	1.8289
45	1474.73	749.33	2.0662
46	1474.73	749.67	2.0662
47	1305.39	749.98	1.8289
48	1267.85	749.33	1.7763
49	1267.85	749.58	1.7763
50	1637.92	749.36	2.2948
TOTAL	71,374.78 S.F.		100.00%



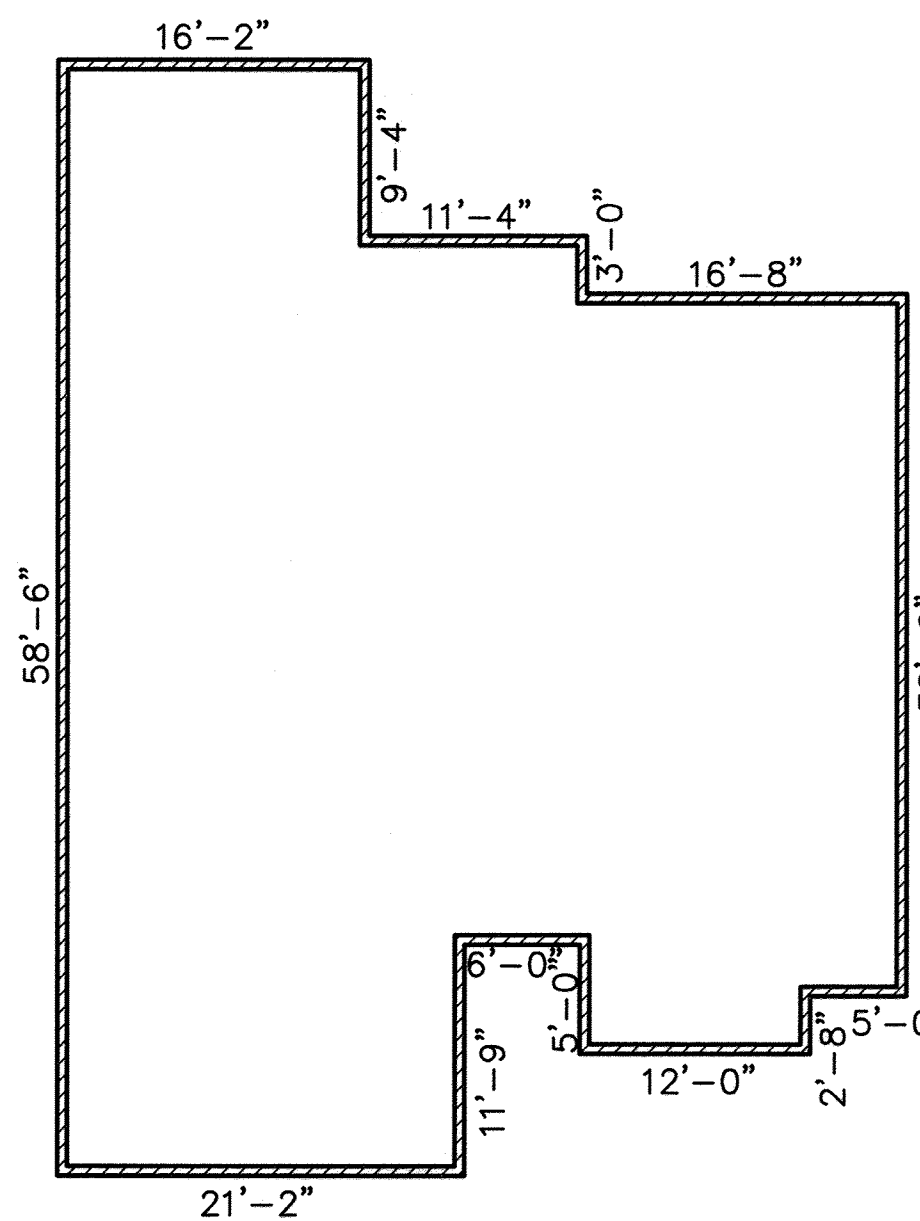
RIGHT SIDE ELEVATION



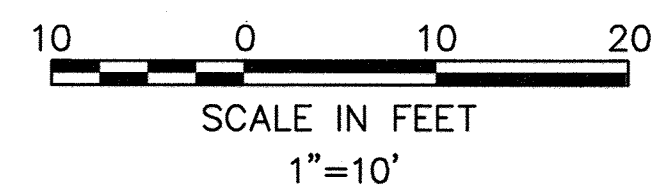
LEFT SIDE ELEVATION



REAR ELEVATION



FOUNDATION PLAN
(EXTERIOR DIMENSIONS)



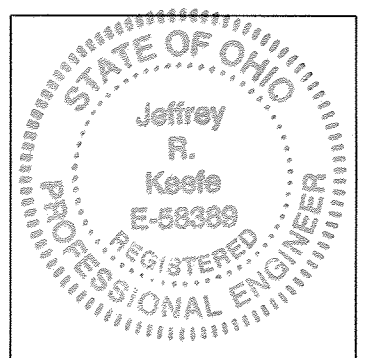
DATE:	01-11-2012	DATE	DESCRIPTION	BY
DRAWN BY:	ABR/CCC			
CH'D BY:	<i>ABR</i>			
DWG. NAME:	15-PLAN01-Rev-01.11.12			
PATH:	04000\04142-CP15			
F.B.:				

KS ASSOCIATES
KS Associates, Inc.
260 Burns Road, Suite 100
Elyria, OH 44035
P 440 365 4730
F 440 365 4790
www.ksassociates.com

**CHESAPEAKE CONDOMINIUM
PHASE NO. 15**
PART OF
ORIGINAL CARLISLE TOWNSHIP SECTION NO. 5
CITY OF ELYRIA COUNTY OF LORAIN STATE OF OHIO

SHEET
2
OF
2
JOB NO.
04142-CP15A

Jeffrey R. Keefe 2-23-12
JEFFREY R. KEEFE
PROFESSIONAL ENGINEER NO. 58389



Mark A. Yeager 2-23-12
MARK A. YEAGER
PROFESSIONAL SURVEYOR NO. 7289

