

UNIT 9 FRONT VIEW



UNIT 9 REAR VIEWS

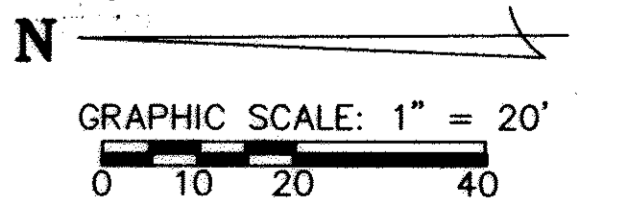
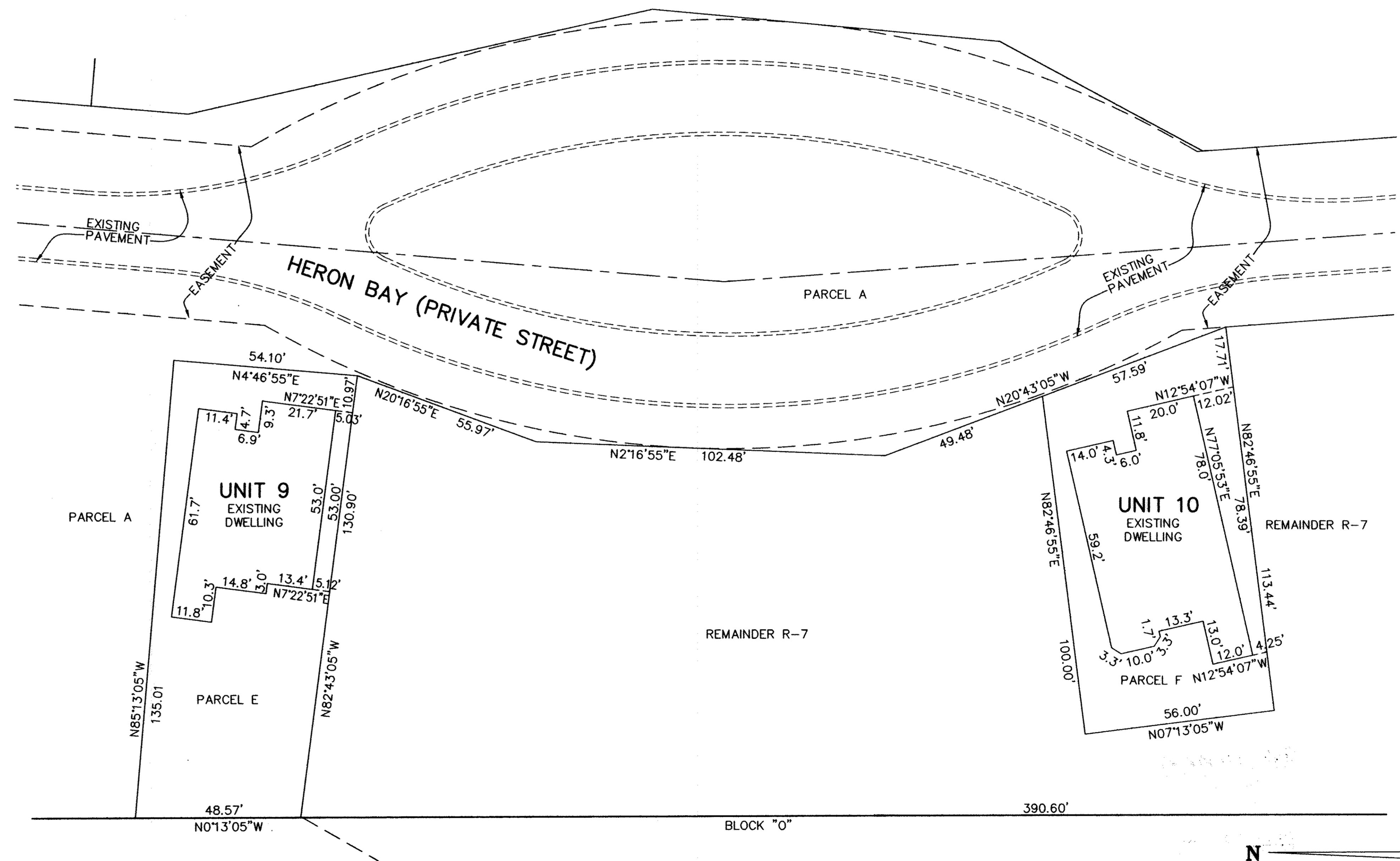


UNIT 10 FRONT VIEW



UNIT 10 REAR VIEW

DETAIL MAP



REVISIONS		

**LEGACY POINTE
CONDOMINIUM NO. 6 PH 4**
 BEING PART OF BLOCK "P" IN THE LEGACY POINTE SUBDIVISION NO. 5
 AS RECORDED IN VOL. 92 OF PLATS, PGS. 27-30 OF LORAIN COUNTY
 RECORDS, OF PART OF ORIGINAL AVON TWP. SECTION 17
 CITY OF AVON LAKE, COUNTY OF LORAIN, OHIO

**THE HENRY G. REITZ
ENGINEERING COMPANY**
 4214 ROCKY RIVER DRIVE
 CLEVELAND, OHIO 44135
 PHONE: (216) 251-3033

2
2
AUGUST
2011

L:\design\K\leggett\CONDO\LEGAC 1-E-4.dwg, 1:50