

R:\05000\0533A\LD\CONTROL\Drawg_Sr_254_Dedication.dwg 8/24/2010 1:39:01 PM EDT

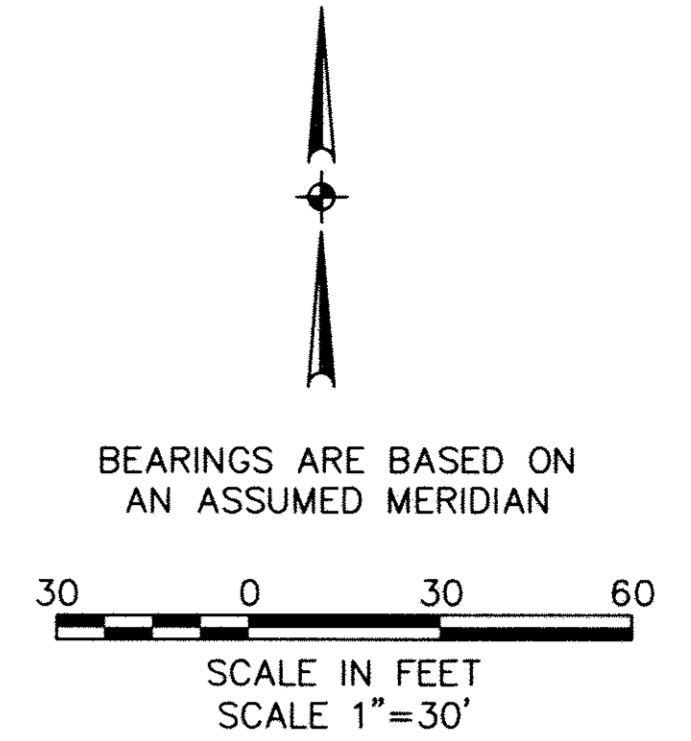
CENTER ROAD
(60' R/W)

AVON CITY RETAIL CENTRE LLC NOW KNOWN AS CITY CENTRE OF AVON RETAIL LLC BY INSTRUMENT NO. 20090293783

LINE TABLE		
LINE	BEARING	LENGTH
L1	S24°00'20"W	8.63'(C)
L2	S84°37'52"W	20.87'(C)
L3	N42°06'15"W	15.94'(C)

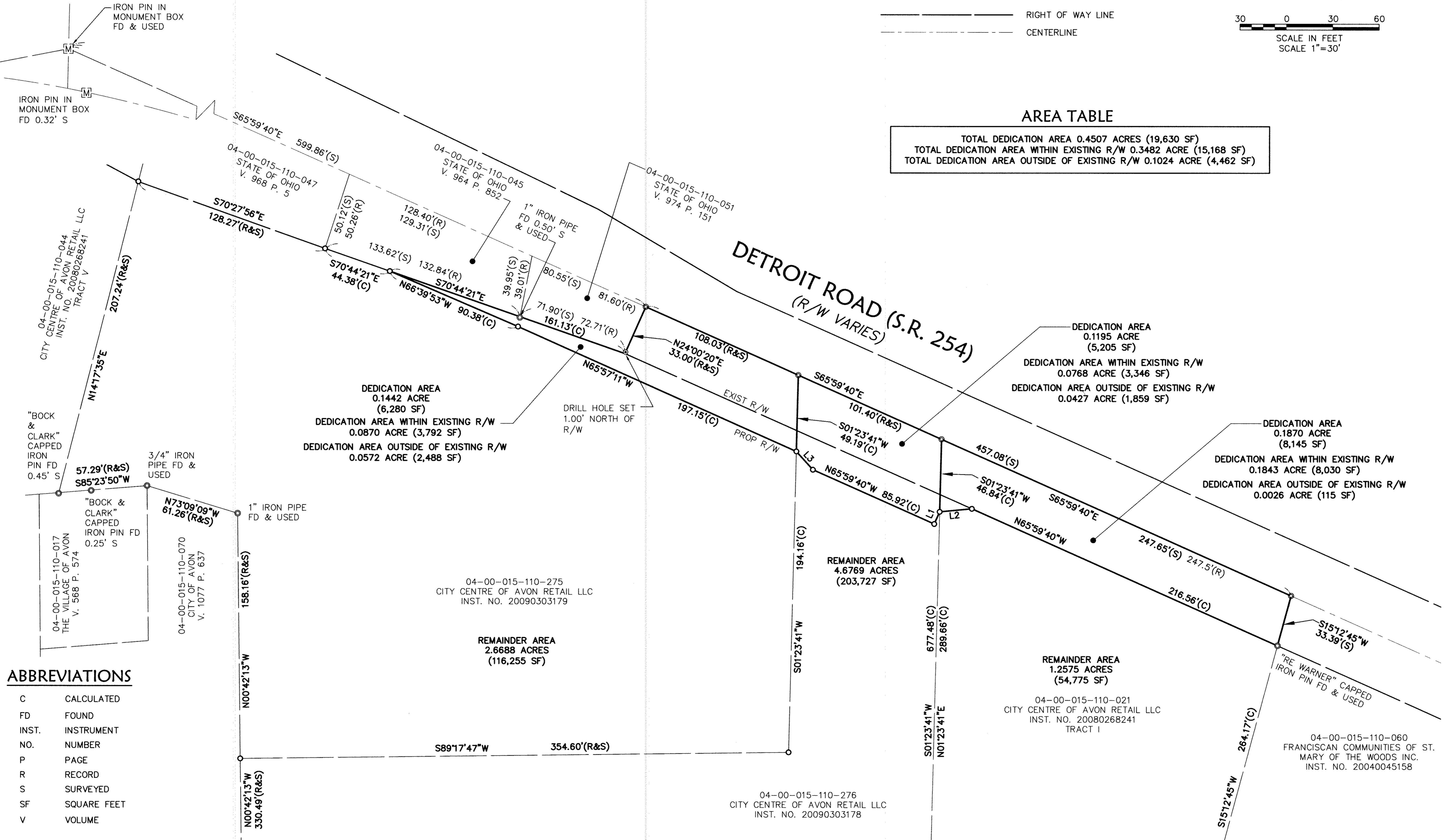
LEGEND

- ☒ MONUMENT BOX FOUND
 - ⊙ IRON PIPE / PIN FOUND AS DESCRIBED
 - 5/8" CAPPED REBAR SET LABELED "KS ASSOCS INC PROP MARKER"
 - DRILL HOLE SET
 - ⊙ MAG NAIL SET
- RIGHT OF WAY LINE
 - - - - - CENTERLINE



AREA TABLE

TOTAL DEDICATION AREA	0.4507 ACRES (19,630 SF)
TOTAL DEDICATION AREA WITHIN EXISTING R/W	0.3482 ACRE (15,168 SF)
TOTAL DEDICATION AREA OUTSIDE OF EXISTING R/W	0.1024 ACRE (4,462 SF)



ABBREVIATIONS

- C CALCULATED
- FD FOUND
- INST. INSTRUMENT
- NO. NUMBER
- P PAGE
- R RECORD
- S SURVEYED
- SF SQUARE FEET
- V VOLUME

MATCH LINE SEE SHEET 3

DATE	DESCRIPTION	BY	TAB	TAB
8/21/09	REVISED PER CONSULTING ENGINEER COMMENTS		8	3
7/23/09	UPDATED OWNERSHIPS		9	3
REVISIONS				
DATE	DRAWN BY	CVD BY	DWG. NAME	PATH
12-17-07	MM	7/25	SR_254_Dedication	05332/161/Control
KS ASSOCIATES KS Associates, Inc. 260 Burns Road, Suite 100 Elyria, OH 44035 P 440 365 4730 F 440 365 4790 www.ksassociates.com				
DETROIT ROAD (STATE ROUTE 254) DEDICATION PLAT OF PART OF ORIGINAL AVON TOWNSHIP SECTION NO. 15 CITY OF AVON, COUNTY OF LORAIN STATE OF OHIO				
SHEET 2 OF 3				
JOB NO. 08301				

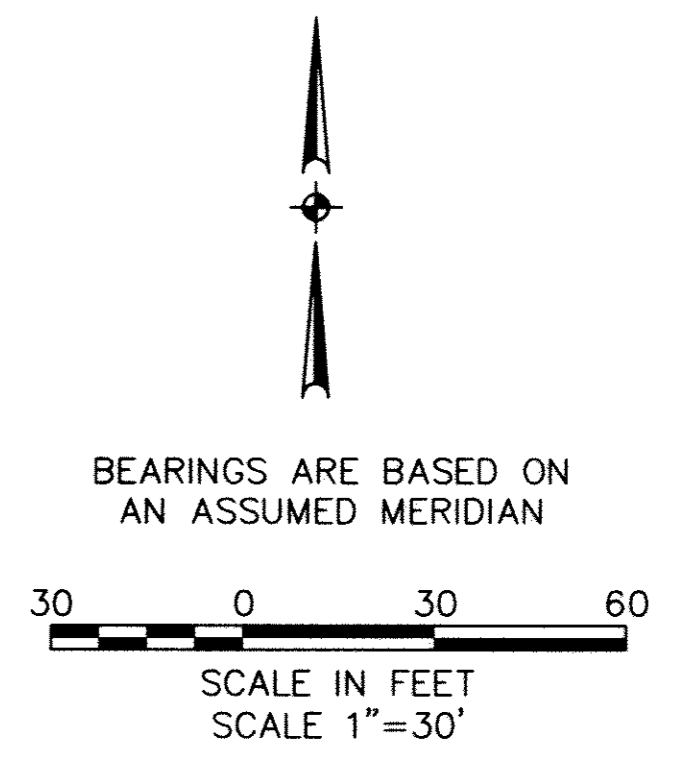
Tax Map Dept. Copy #10-01217

96/34

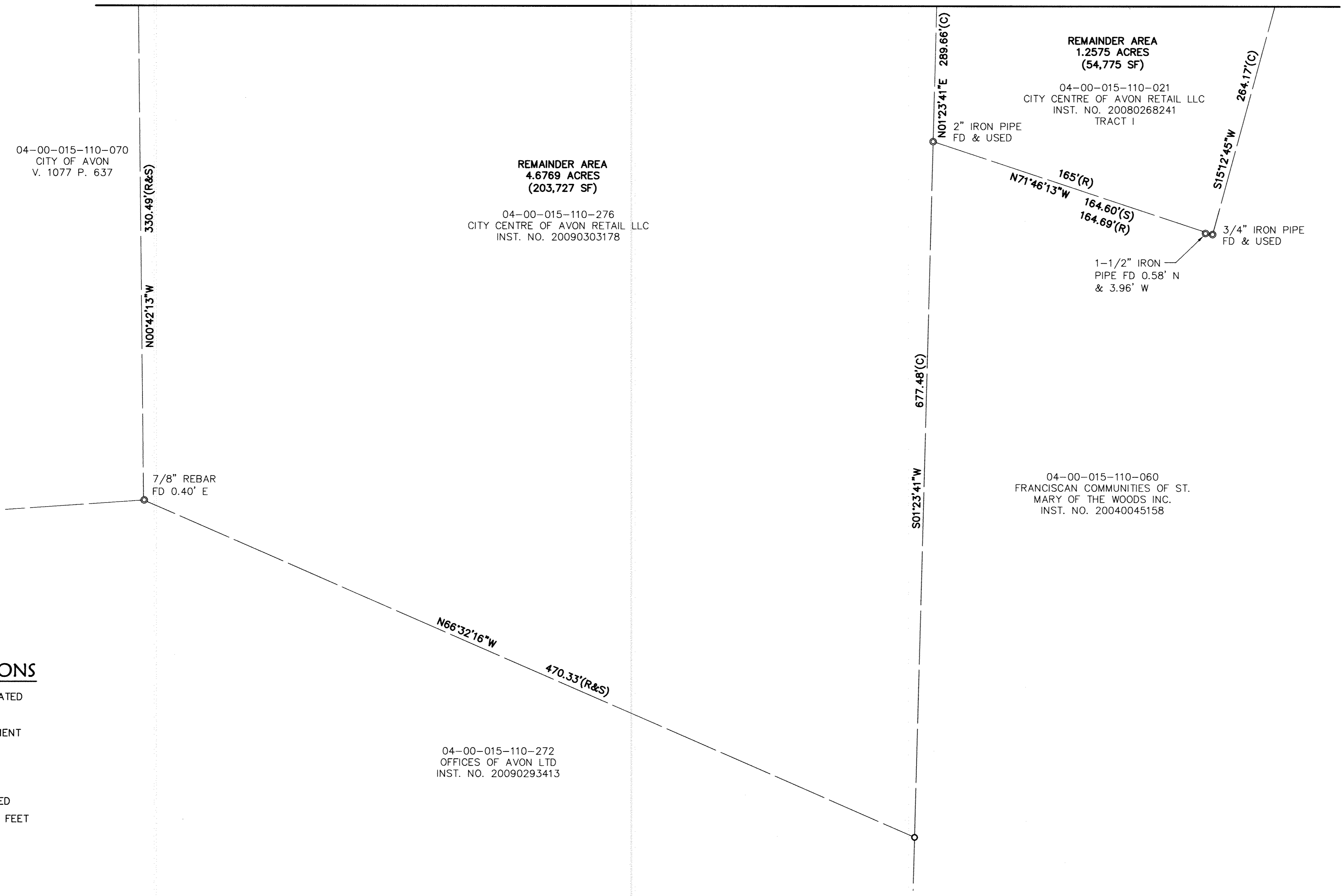
AVON CITY RETAIL CENTRE LLC NOW KNOWN AS CITY CENTRE OF AVON RETAIL LLC BY INSTRUMENT NO. 20090293783

LEGEND

- ☒ MONUMENT BOX FOUND
 - ◎ IRON PIPE / PIN FOUND AS DESCRIBED
 - 5/8" CAPPED REBAR SET LABELED "KS ASSOCS INC PROP MARKER"
 - DRILL HOLE SET
 - ◎ MAG NAIL SET
- RIGHT OF WAY LINE
 - - - - - CENTERLINE



MATCH LINE SEE SHEET 2



04-00-015-110-070
CITY OF AVON
V. 1077 P. 637

REMAINDER AREA
4.6769 ACRES
(203,727 SF)

04-00-015-110-276
CITY CENTRE OF AVON RETAIL LLC
INST. NO. 20090303178

REMAINDER AREA
1.2575 ACRES
(54,775 SF)

04-00-015-110-021
CITY CENTRE OF AVON RETAIL LLC
INST. NO. 20080268241
TRACT 1

04-00-015-110-060
FRANCISCAN COMMUNITIES OF ST.
MARY OF THE WOODS INC.
INST. NO. 20040045158

04-00-015-110-272
OFFICES OF AVON LTD
INST. NO. 20090293413

ABBREVIATIONS

- C CALCULATED
- FD FOUND
- INST. INSTRUMENT
- NO. NUMBER
- P PAGE
- R RECORD
- S SURVEYED
- SF SQUARE FEET
- V VOLUME

BY									
DESCRIPTION									
DATE									
REVISIONS									
DATE	12-17-07								
DRAWN BY	JM								
CHECKED BY	JAS								
DWG. NAME	SR 254 Dedication								
PATH	08301/101/Control								
F.B.									
<p>KS Associates, Inc. 260 Burns Road, Suite 100 Elyria, OH 44035 P 440 365 4730 F 440 365 4790 www.ksassociates.com</p>									
<p>DETROIT ROAD (STATE ROUTE 254) DEDICATION PLAT OF PART OF ORIGINAL AVON TOWNSHIP SECTION NO. 15 CITY OF AVON, COUNTY OF LORAIN STATE OF OHIO</p>									
SHEET		3		OF		3		JOB NO.	
								08301	

R:\056001\05334\LDOT\CONTR\04\SR 254 Dedication.dwg 8/24/2010 1:39:01 PM EDT

Tax Map Dept. Copy # 10-01217

96/35