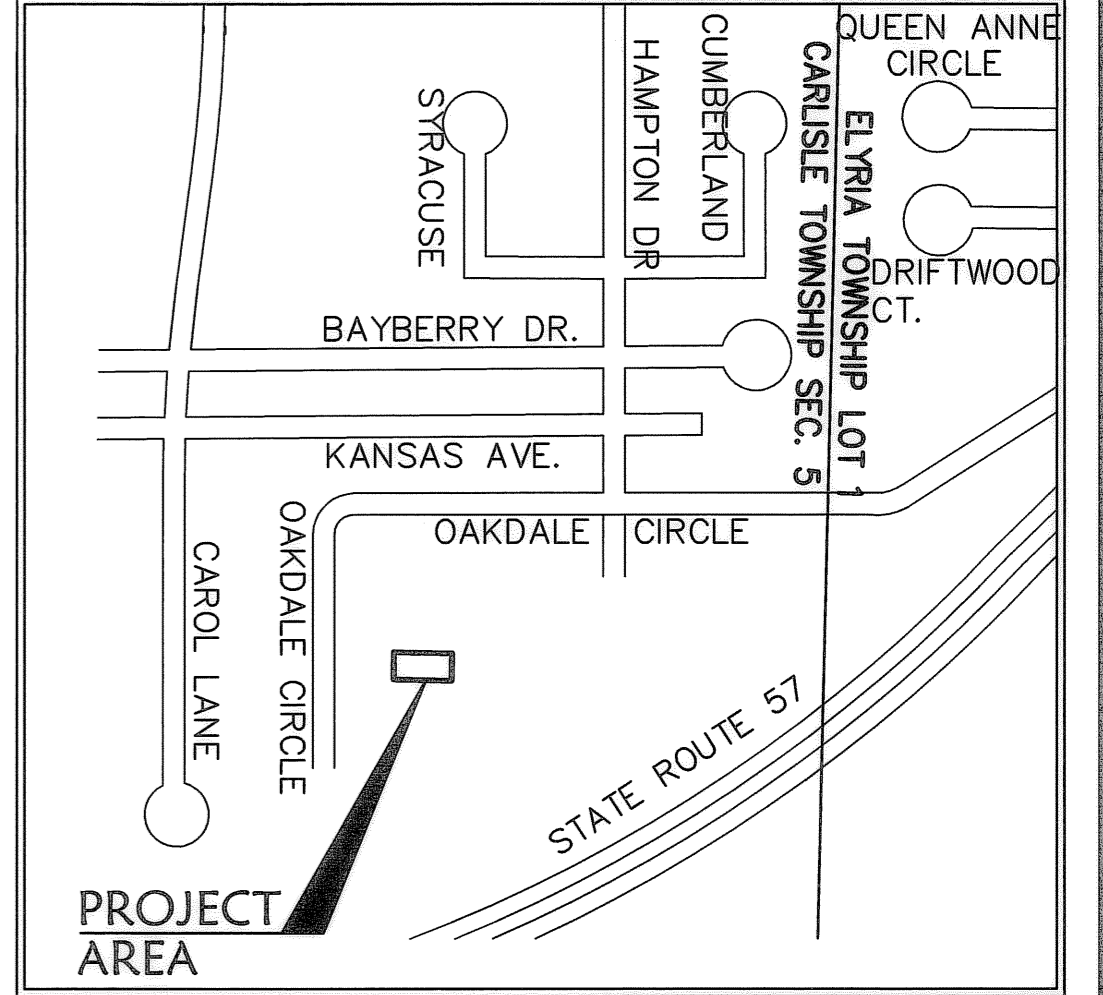
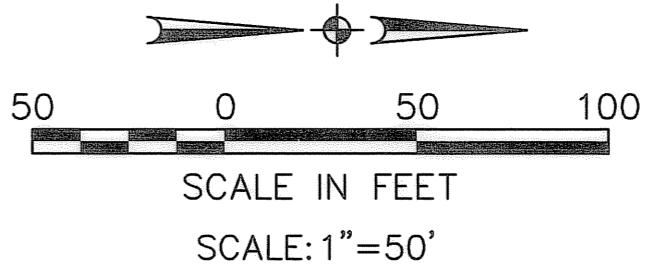


R:\04000\04142-CP14\dat\control.dwg 14-PLA101.dwg 7/23/2009 2:53:29 PM EDT



SHEET INDEX

SHEET NO.	DESCRIPTION
1	SURVEY MAP
2	FLOOR & FOUNDATION PLANS & ELEVATIONS

LINE DATA

LINE	DISTANCE	BEARING
L1	28.58'	N 01°44'19" E
L2	8.29'	S 89°06'24" E
L3	3.79'	N 00°53'36" E
L4	9.11'	N 66°18'03" E
L5	31.84'	S 89°12'58" E
L6	12.00'	N 88°15'41" W
L7	32.85'	S 89°12'58" E
L8	6.62'	S 88°35'09" E

AREA MAP - NO SCALE

BEARING SYSTEM IS TAKEN FROM THE HEATHERWOOD PROJECT.

LEGEND

- - IRON PIN/PIPE FOUND
- ⊠ - MONUMENT BOX FOUND
- - 5/8" CAPPED REBAR SET
- - - PK NAIL SET

PHASE 14 TOTAL = 0.1350 AC.

CURVE DATA

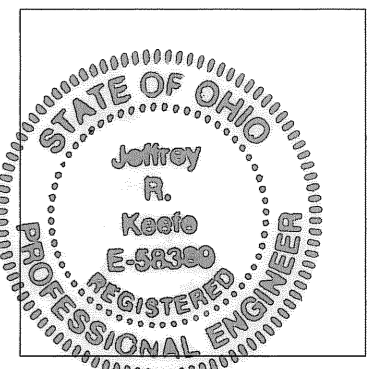
CURVE	RADIUS	LENGTH	TANGENT	DELTA	CHORD	BEARING
C1	105.63'	59.06'	30.32'	32°02'01"	58.29'	N72°42'48"W
C2	88.73'	48.88'	25.08'	31°33'53"	48.27'	S72°28'44"E
C3	13.00'	20.42'	13.00'	90°00'00"	18.38'	N43°15'41"W
C4	81.00'	34.55'	17.54'	24°26'18"	34.29'	S10°28'50"E
C5	28.00'	44.48'	28.50'	91°01'11"	39.95'	N43°46'16"W
C6	25.00'	38.82'	24.56'	88°58'49"	35.04'	S46°13'44"W
C7	125.62'	13.25'	6.63'	6°02'35"	13.24'	N04°51'23"E
C8	50.00'	34.04'	17.71'	39°00'21"	33.39'	S69°46'41"E
C9	59.00'	25.17'	12.78'	24°26'18"	24.97'	N10°28'50"W
C10	81.00'	34.55'	17.54'	24°26'18"	34.29'	S10°28'50"E
C11	59.00'	25.17'	12.78'	24°26'18"	24.97'	N10°28'50"W
C12	15.00'	2.74'	1.37'	10°26'51"	2.73'	N85°34'18"E
C13	15.00'	3.38'	1.70'	12°54'42"	3.37'	S82°45'44"E
C14	973.95'	10.88'	5.44'	00°38'24"	10.88'	S88°54'03"E
C15	1033.24'	11.12'	5.56'	00°37'00"	11.12'	S88°54'03"E
C16	15.00'	23.47'	14.91'	89°39'32"	21.15'	S46°34'35"W
C17	15.00'	23.64'	15.08'	90°18'26"	21.27'	S43°25'25"E

STORM SEWER EASEMENT DETAIL
SCALE: 1"=50'

TRANSFERRED
IN COMPLIANCE WITH SEC. 115-02
OHIO REV. 05/07

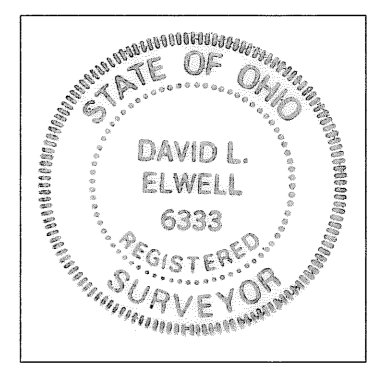
AUG 03 2009
MARK R. STEWART
LORAIN COUNTY AUDITOR

Jeffrey R. Keeffe 7-23-09
JEFFREY R. KEEFFE
PROFESSIONAL ENGINEER NO. 58389



CERTIFICATION
THIS IS TO CERTIFY THAT THE ATTACHED DRAWINGS CORRECTLY REPRESENT THE BUILDINGS AS CONSTRUCTED AND THAT THERE ARE NO ENCROACHMENTS ON ADJUTING PROPERTIES.

David L. Elwell 7-23-07
DAVID L. ELWELL
PROFESSIONAL SURVEYOR NO. 6333



DATE	DESCRIPTION	BY
7-23-09		

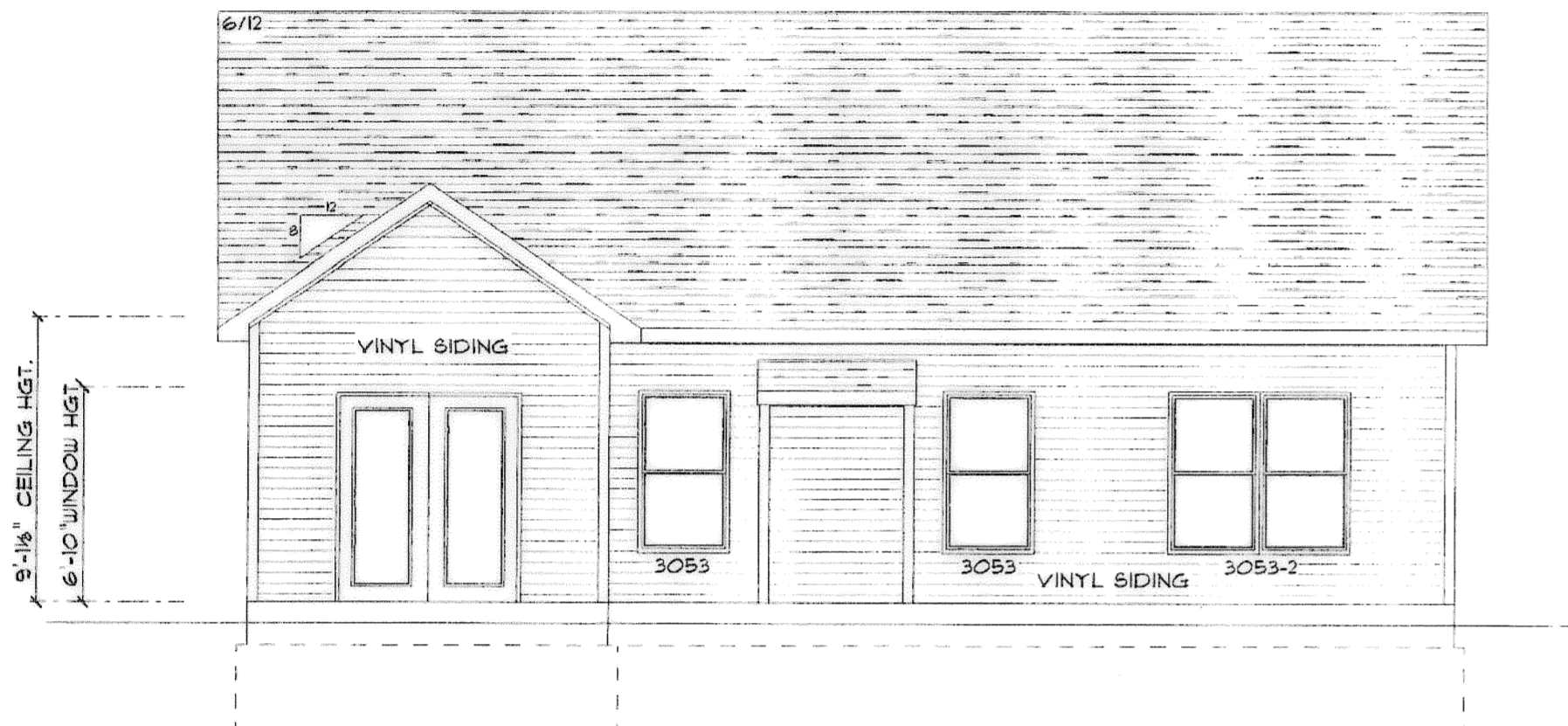
KS ASSOCIATES
KS Associates, Inc.
260 Burns Road, Suite 100
Elyria, OH 44035
P 440 365 4730
F 440 365 4790
www.ksassociates.com

CHESAPEAKE CONDOMINIUM
PHASE NO. 14
PART OF
ORIGINAL CARLISLE TOWNSHIP SECTION NO. 5
CITY OF ELYRIA COUNTY OF LORAIN STATE OF OHIO

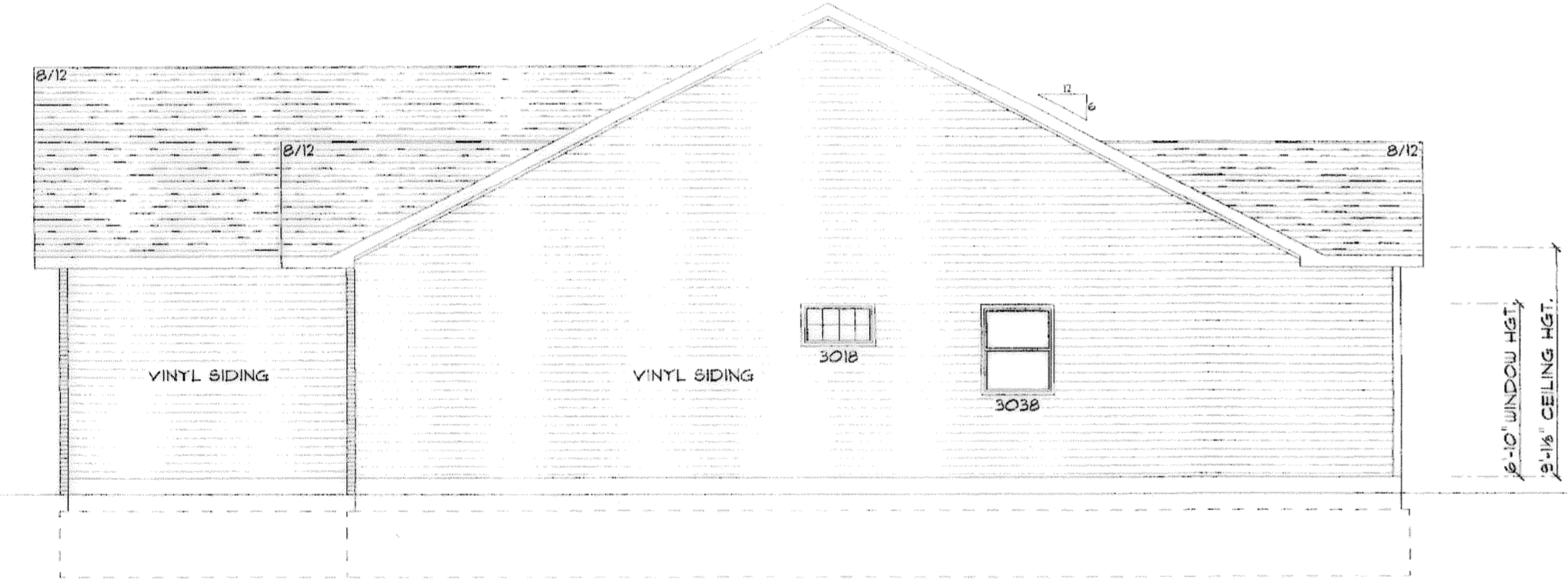
SHEET
1
OF
2
JOB NO.
04142-CP14



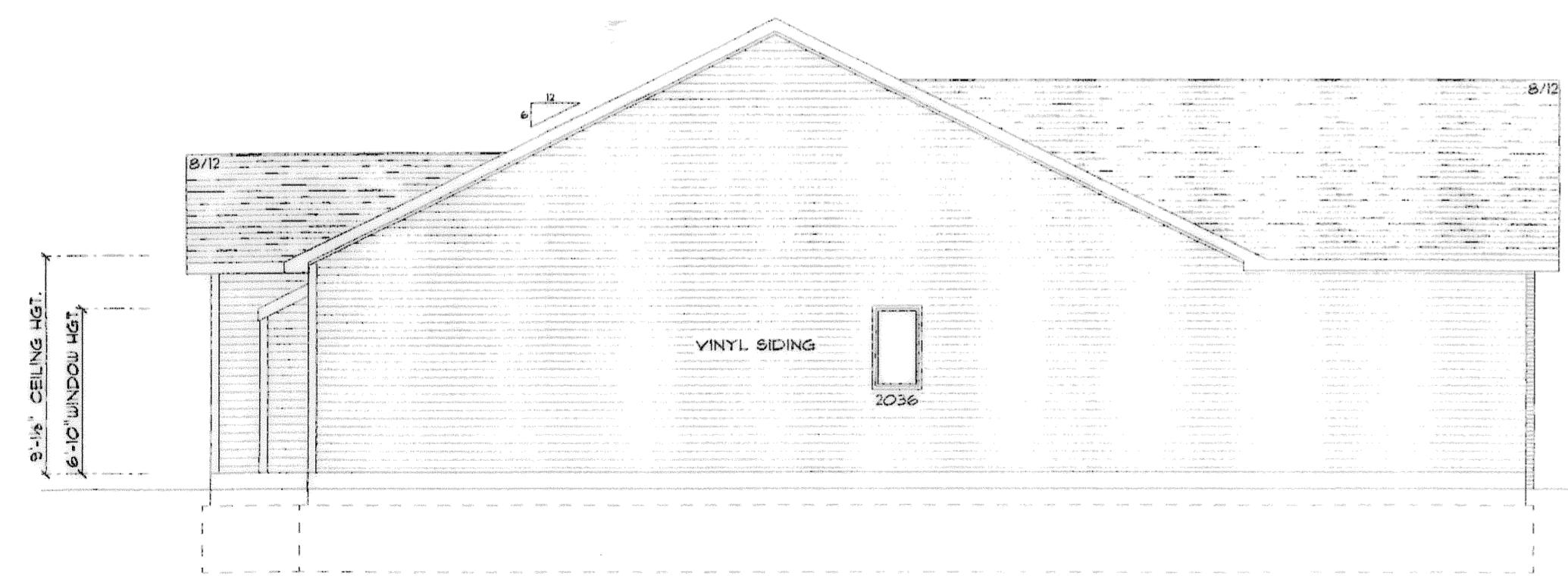
FRONT ELEVATION
TAYLOR MODEL
NOT TO SCALE



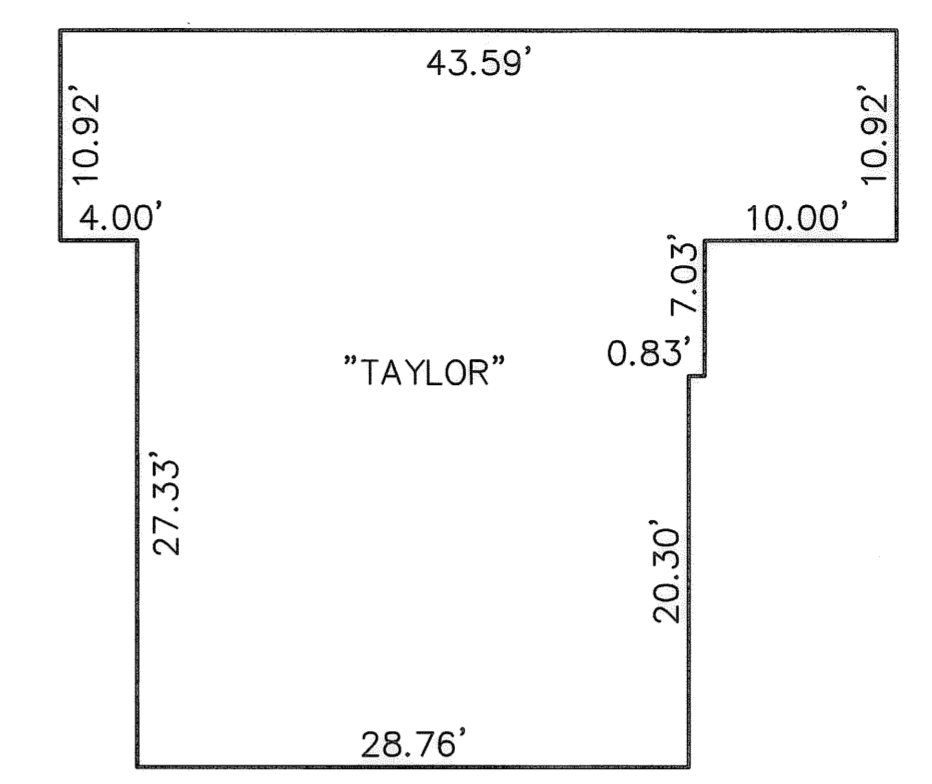
REAR ELEVATION
NOT TO SCALE



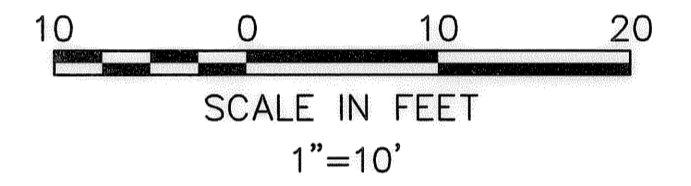
RIGHT ELEVATION
NOT TO SCALE



LEFT ELEVATION
NOT TO SCALE

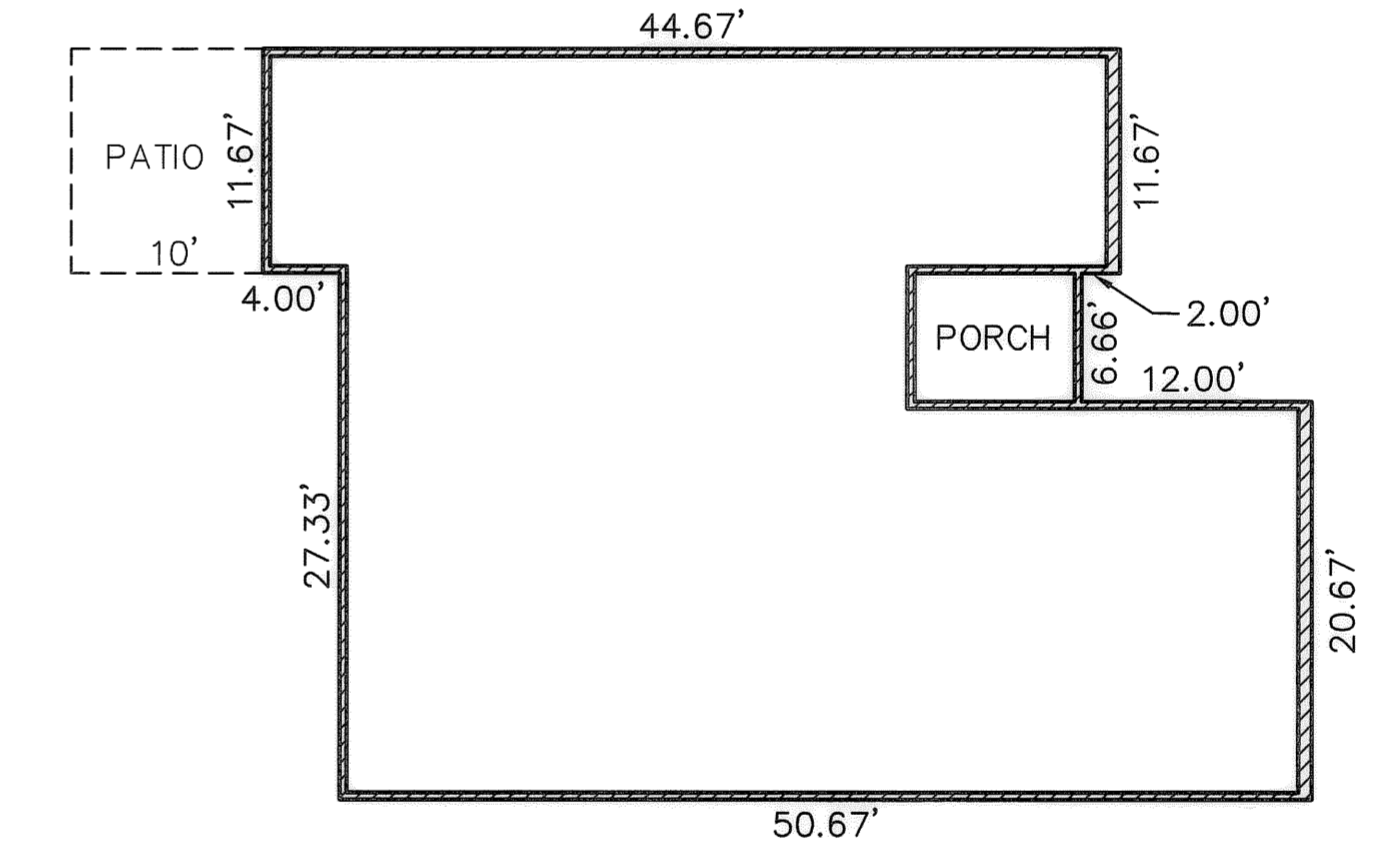


FIRST FLOOR PLAN
(INTERIOR DIMENSIONS)



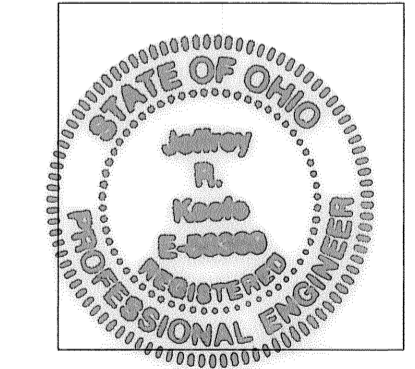
OWNERSHIP PERCENTAGES

UNIT NO.	SQ. FT.	ELEV. F.F.	% OWNERSHIP
1	1427.16	748.93	2.0465
2	1645.51	749.08	2.3596
3	1427.16	749.45	2.0465
4	1637.92	749.47	2.3487
5	1427.16	749.50	2.0465
6	1427.16	749.44	2.0465
7	1645.51	749.42	2.3596
8	1427.16	749.44	2.0465
9	1645.51	749.84	2.3596
10	1637.92	749.45	2.3487
11	1645.51	748.48	2.3596
12	1427.16	749.86	2.0465
13	1645.51	749.53	2.3596
14	1645.51	749.39	2.3596
15	1645.51	749.69	2.3596
16	1427.16	749.36	2.0465
17	1645.51	749.23	2.3596
18	1154.56	749.35	1.6556
19	1305.39	749.35	1.8719
20	1154.56	749.41	1.6556
21	1154.56	749.41	1.6556
22	1305.39	750.46	1.8719
23	1154.56	750.46	1.6556
24	1645.51	749.53	2.3596
25	1207.46	749.20	1.7315
26	1305.39	749.81	1.8719
27	1154.56	749.81	1.6556
28	1305.39	750.04	1.8719
29	1305.39	750.04	1.8719
30	1427.16	749.50	2.0465
31	1645.51	749.70	2.3596
32	1645.51	749.35	2.3596
33	1645.51	749.07	2.3596
34	1305.39	749.17	1.8719
35	1305.39	749.17	1.8719
36	1207.46	749.26	1.7315
37	1427.16	749.44	2.0465
38	1427.16	749.36	2.0465
39	1305.39	749.84	1.8719
40	1305.39	749.84	1.8719
41	1645.51	749.45	2.3596
42	1460.23	749.69	2.0939
43	1305.39	749.38	1.8719
44	1305.39	749.38	1.8719
45	1474.73	749.33	2.1147
46	1474.73	749.67	2.1147
47	1305.39	749.98	1.8719
48	1267.85	749.33	1.8180
49	1267.85	749.58	1.8180
TOTAL	69736.86 S.F.		100.00%

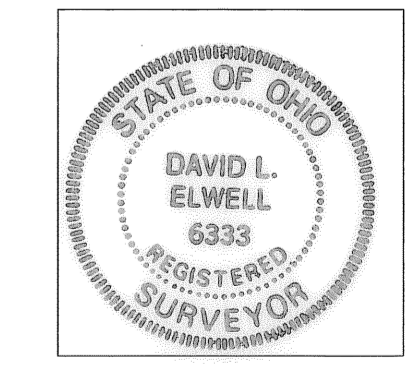


FOUNDATION PLAN
(EXTERIOR DIMENSIONS)

R:\04000\04142-CP14\ldat\control\dwg\14-PLAN01.dwg 7/23/2009 2:47:50 PM EDT



Jeffrey R. Keffe 7-23-09
JEFFREY R. KEEFE
PROFESSIONAL ENGINEER NO. 58389



David L. Elwell 7-23-09
DAVID L. ELWELL
PROFESSIONAL SURVEYOR NO. 6333

REVISIONS	DATE	DESCRIPTION	BY

KS
KS ASSOCIATES

KS Associates, Inc.
260 Burns Road, Suite 100
Elyria, OH 44035
P 440 365 4730
F 440 365 4790
www.ksassociates.com

**CHESAPEAKE CONDOMINIUM
PHASE NO. 14**

PART OF
ORIGINAL CARLISLE TOWNSHIP SECTION NO. 5
CITY OF ELYRIA COUNTY OF LORAIN STATE OF OHIO

SHEET
2
OF
2

JOB NO.
04142-CP14