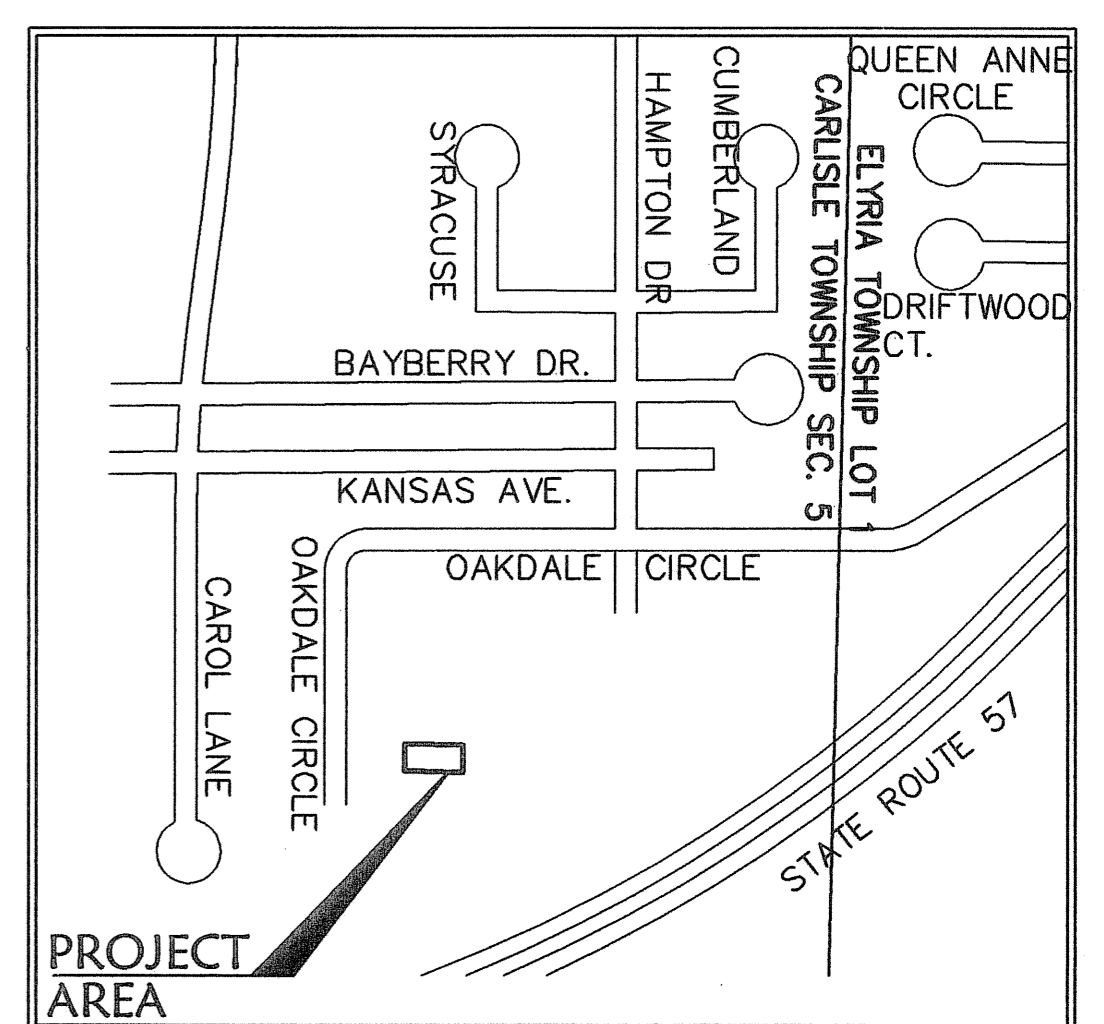
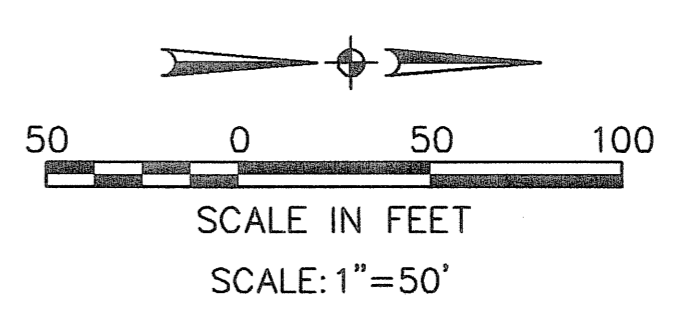
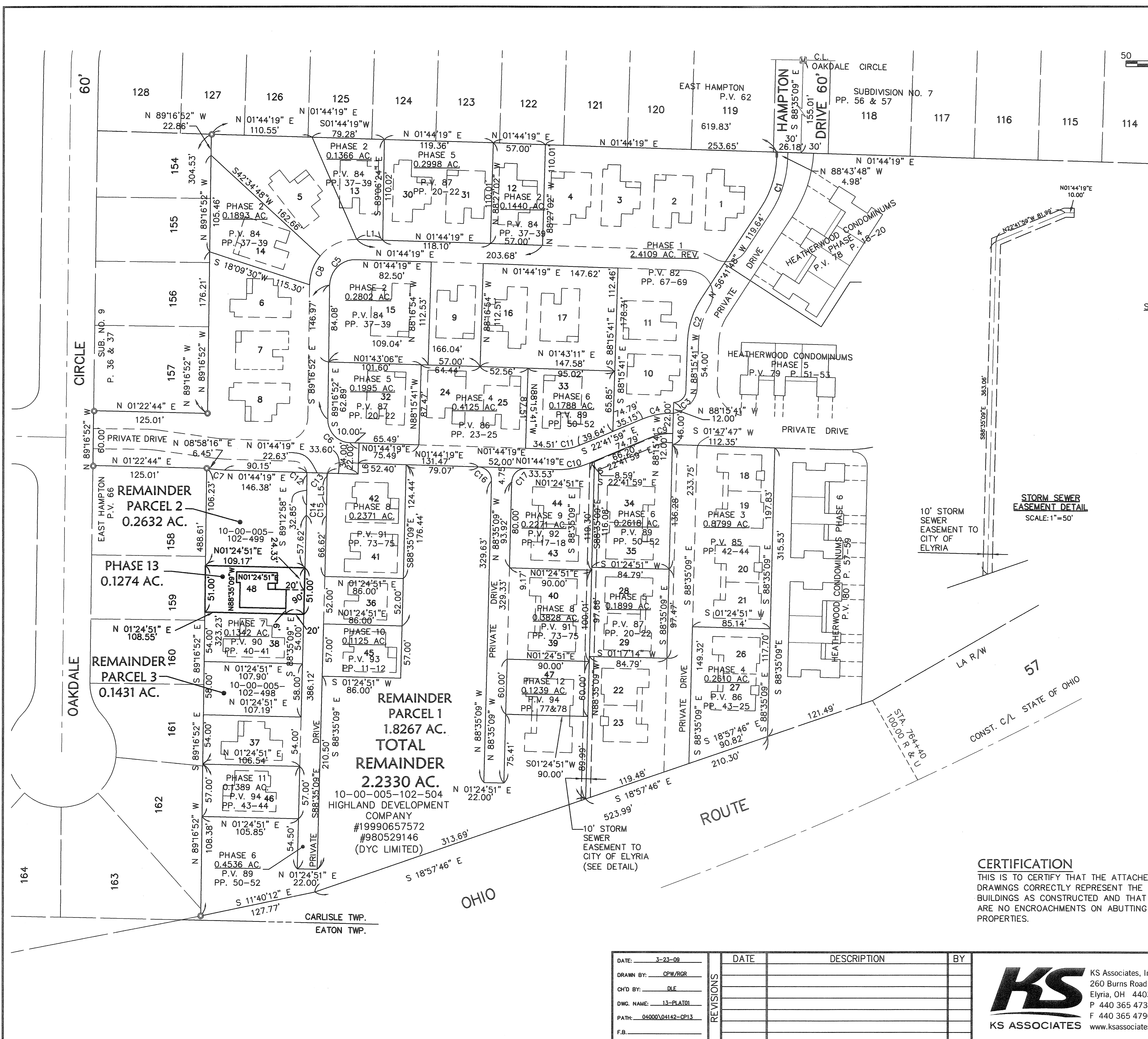


R:\04000\04142-CP13\13-PLAT01.dwg 3/24/2009 11:34:47 AM EDT



AREA MAP - NO SCALE

SHEET INDEX

SHEET NO.	DESCRIPTION
1	SURVEY MAP
2	FLOOR & FOUNDATION PLANS & ELEVATIONS

BEARING SYSTEM IS TAKEN FROM THE HEATHERWOOD PROJECT.

LINE DATA

LINE	DISTANCE	BEARING
L1	28.58'	N 01°44'19" E
L2	8.29'	S 89°06'24" E
L3	3.79'	N 00°53'36" E
L4	9.11'	N 66°18'03" E
L5	31.84'	S 89°12'58" E
L6	12.00'	N 88°15'41" W

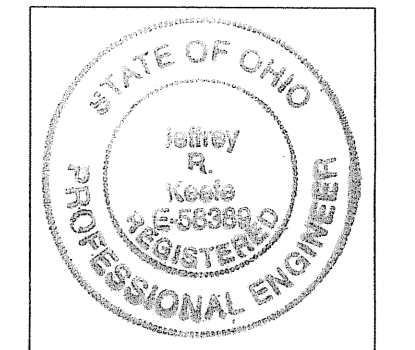
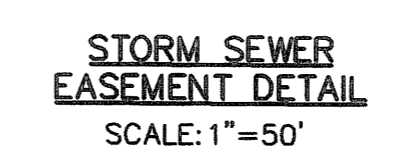
LEGEND

- ⊙ - IRON PIN/PIPE FOUND
- ⊞ - MONUMENT BOX FOUND
- ⊙ - 5/8" CAPPED REBAR SET
- PK NAIL SET

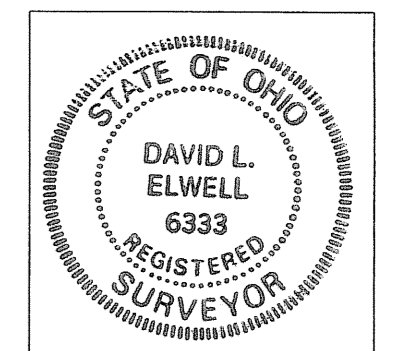
PHASE 13 TOTAL = 0.1274 AC.

CURVE DATA

CURVE	RADIUS	LENGTH	TANGENT	DELTA	CHORD	BEARING
C1	105.63'	59.06'	30.32'	32°02'01"	58.29'	N72°42'48"W
C2	88.73'	48.88'	25.08'	31°33'53"	48.27'	S72°28'44"E
C3	13.00'	20.42'	13.00'	90°00'00"	18.38'	N43°15'41"W
C4	81.00'	34.55'	17.54'	24°26'18"	34.29'	S10°28'50"E
C5	28.00'	44.48'	28.50'	91°01'11"	39.95'	N43°46'16"W
C6	25.00'	38.82'	24.56'	88°58'49"	35.04'	S46°13'44"W
C7	125.62'	13.25'	6.63'	6°02'35"	13.24'	N04°51'23"E
C8	50.00'	34.04'	17.71'	39°00'21"	33.39'	S69°46'41"E
C9	59.00'	25.17'	12.78'	24°26'18"	24.97'	N10°28'50"W
C10	81.00'	34.55'	17.54'	24°26'18"	34.29'	S10°28'50"E
C11	59.00'	25.17'	12.78'	24°26'18"	24.97'	N10°28'50"W
C12	15.00'	2.74'	1.37'	10°26'51"	2.73'	N85°34'18"E
C13	15.00'	3.38'	1.70'	12°54'42"	3.37'	S82°45'44"E
C14	973.95'	10.88'	5.44'	00°38'24"	10.88'	S88°54'03"E
C15	1033.24'	11.12'	5.56'	00°37'00"	11.12'	S88°54'03"E
C16	15.00'	23.47'	14.91'	89°39'32"	21.15'	S46°34'35"W
C17	15.00'	23.64'	15.08'	90°18'26"	21.27'	S43°25'25"E



Jeffrey R. Keeffe 3-25-09
JEFFREY R. KEEFFE
PROFESSIONAL ENGINEER NO. 58389



David L. Elwell 03-25-09
DAVID L. ELWELL
PROFESSIONAL SURVEYOR NO. 6333

CERTIFICATION
THIS IS TO CERTIFY THAT THE ATTACHED DRAWINGS CORRECTLY REPRESENT THE BUILDINGS AS CONSTRUCTED AND THAT THERE ARE NO ENCROACHMENTS ON ADJUTING PROPERTIES.

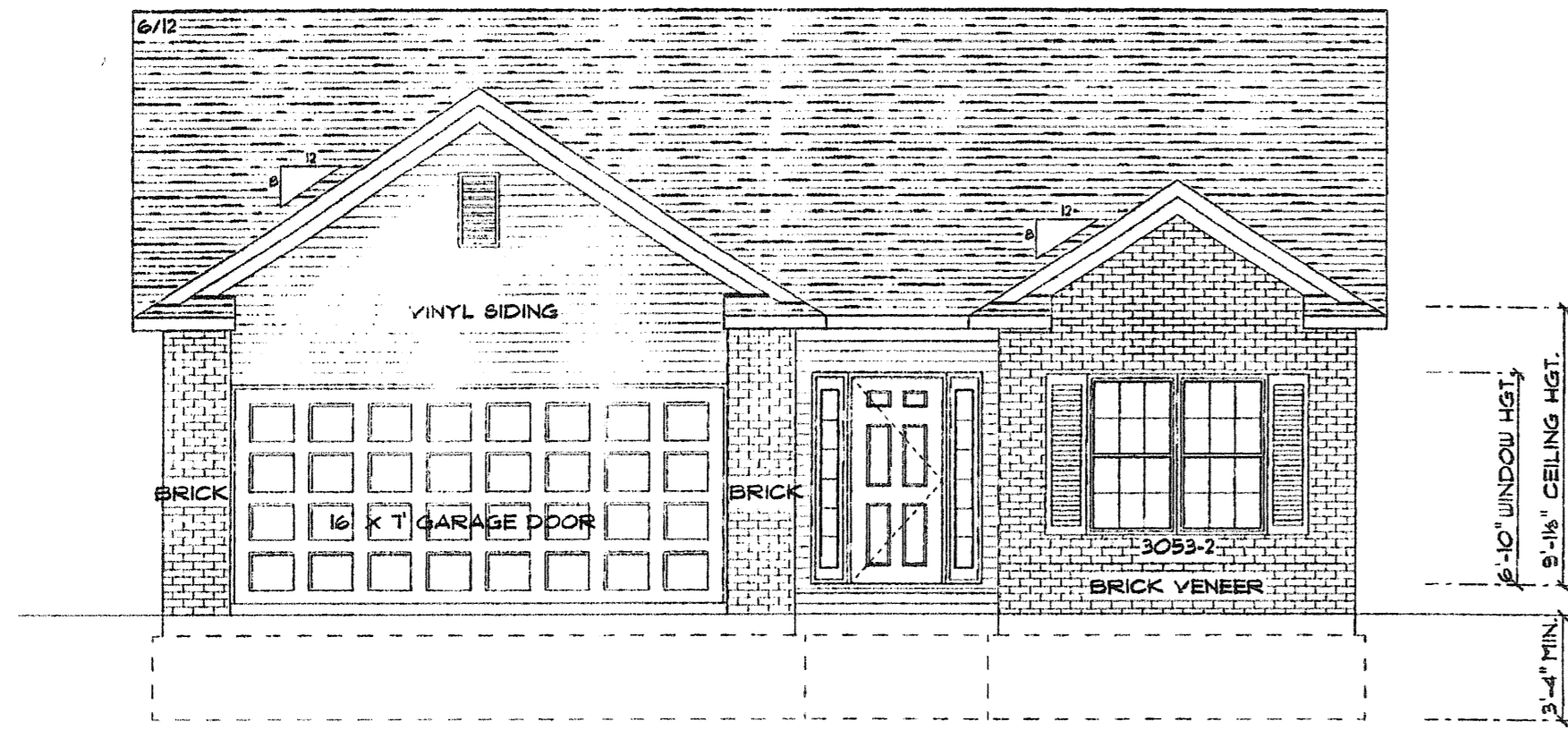
DATE:	3-23-09	DATE	DESCRIPTION	BY
DRAWN BY:	CPW/RGR			
CHK'D BY:	DLE			
DWG. NAME:	13-PLAT01			
PATH:	04000\04142-CP13			
F.B.				

KS ASSOCIATES
KS Associates, Inc.
260 Burns Road, Suite 100
Elyria, OH 44035
P 440 365 4730
F 440 365 4790
www.ksassociates.com

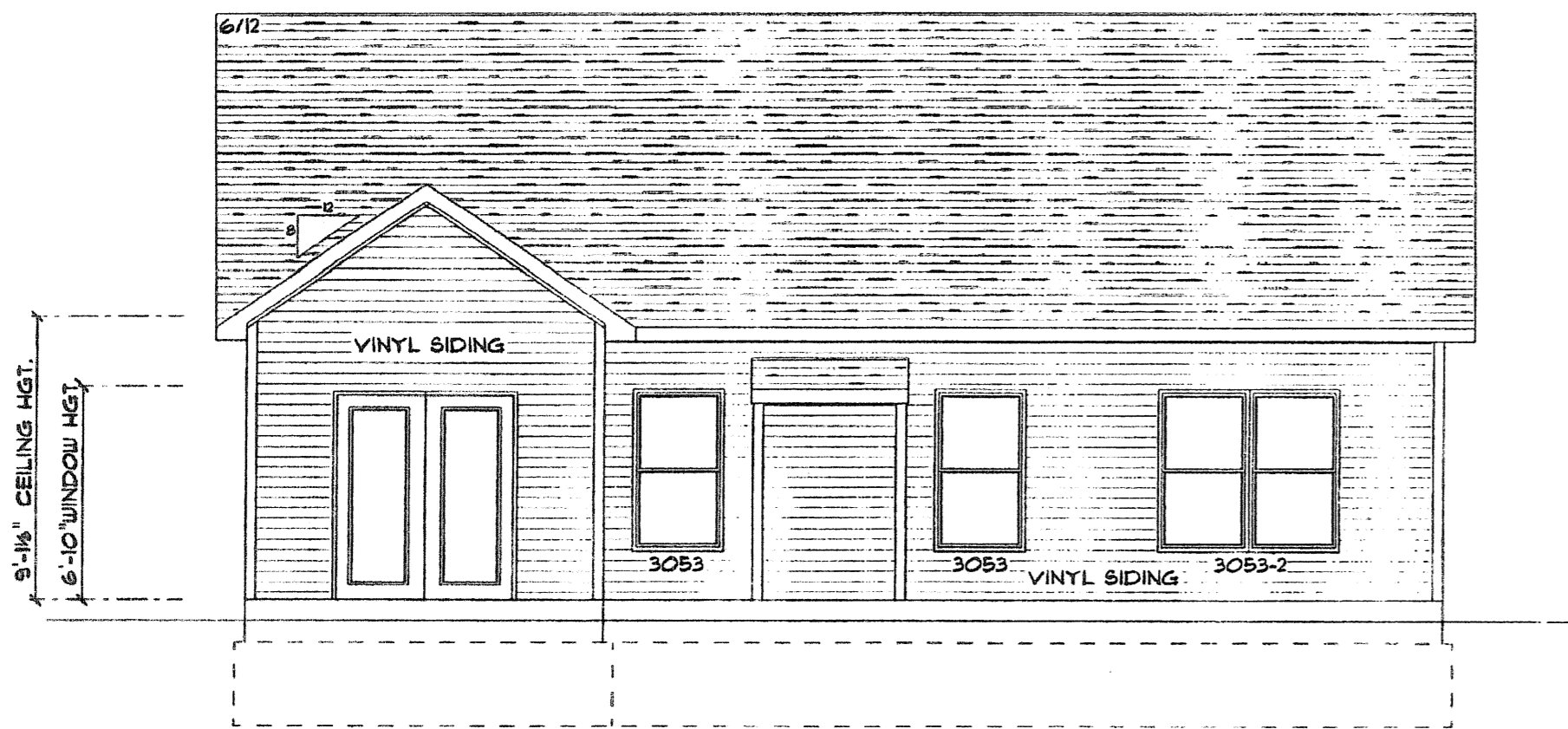
CHESAPEAKE CONDOMINIUM PHASE NO. 13
PART OF ORIGINAL CARLISLE TOWNSHIP SECTION NO. 5
CITY OF ELYRIA COUNTY OF LORAIN STATE OF OHIO

SHEET 1 OF 2
JOB NO. 04142-CP13

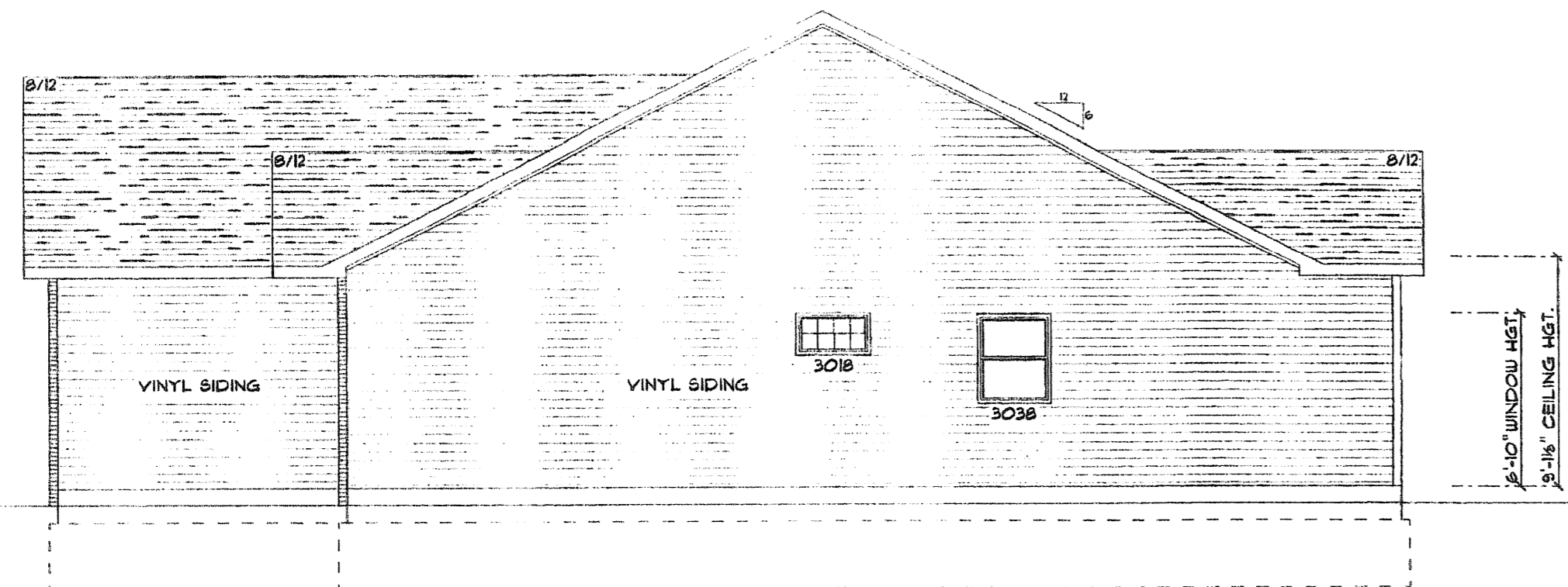
R:\04000\04142-CP13\dwg\control\dwg\13-PLAN01.dwg 3/24/2009 11:41:36 AM EDT



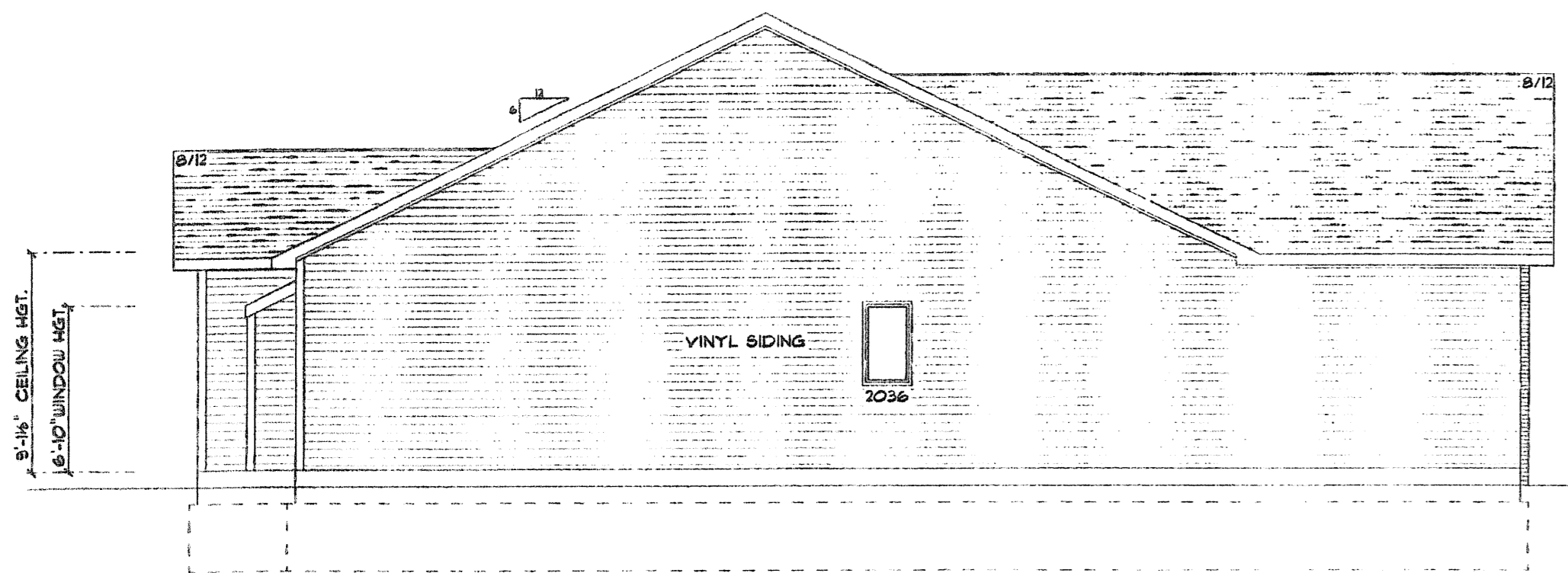
FRONT ELEVATION
TAYLOR MODEL
NOT TO SCALE



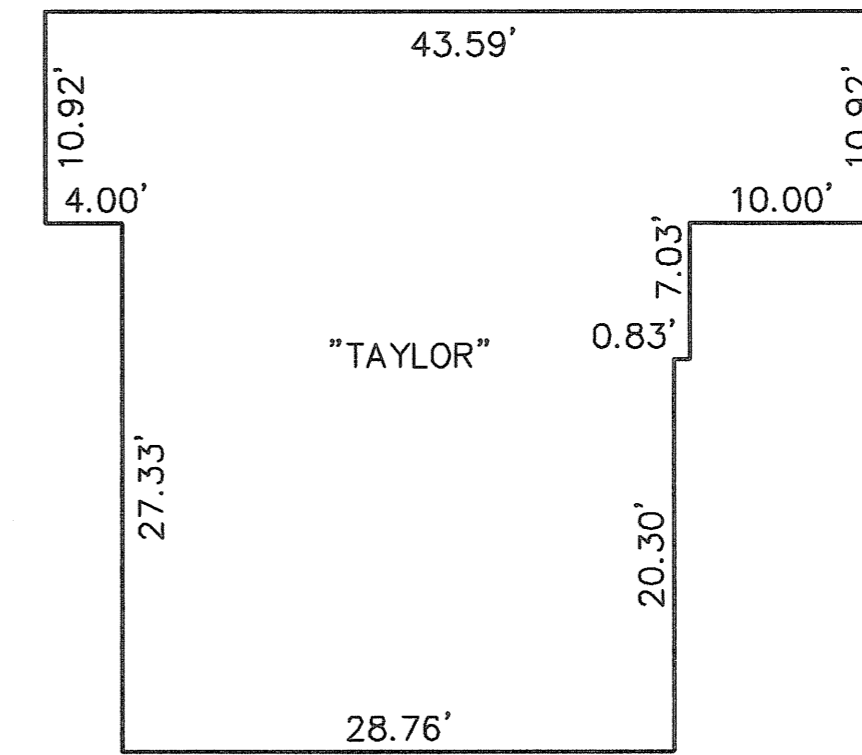
REAR ELEVATION
NOT TO SCALE



RIGHT ELEVATION
NOT TO SCALE



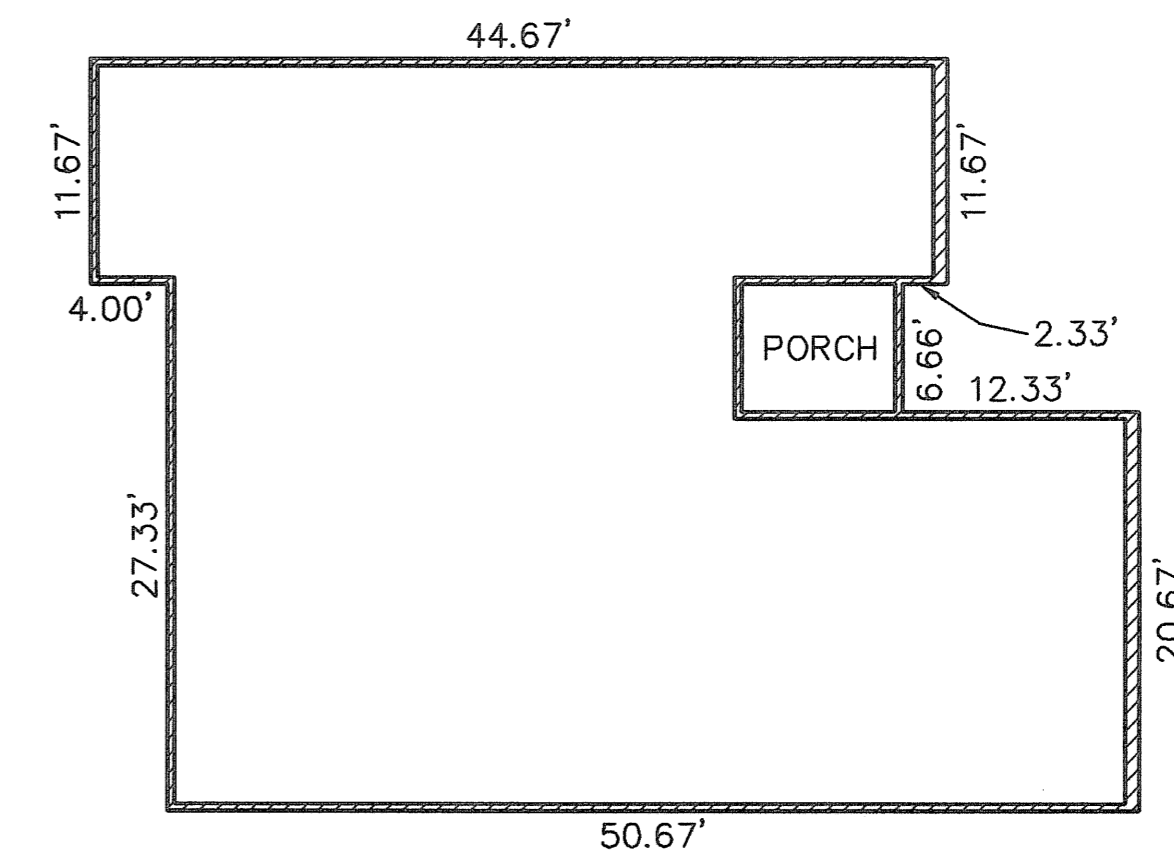
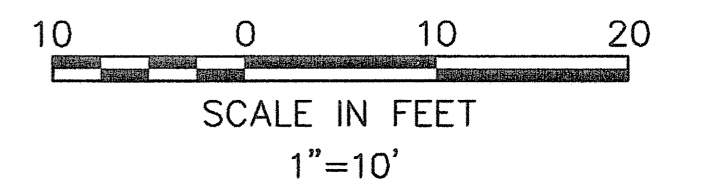
LEFT ELEVATION
NOT TO SCALE



FIRST FLOOR PLAN
(INTERIOR DIMENSIONS)

OWNERSHIP PERCENTAGES

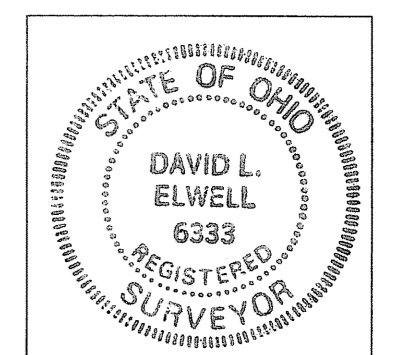
UNIT NO.	SQ. FT.	ELEV. F.F.	% OWNERSHIP
1	1427.16	748.93	2.0844
2	1645.51	749.08	2.4033
3	1427.16	749.45	2.0844
4	1637.92	749.47	2.3922
5	1427.16	749.50	2.0844
6	1427.16	749.44	2.0844
7	1645.51	749.42	2.4033
8	1427.16	749.44	2.0844
9	1645.51	749.84	2.4033
10	1637.92	749.45	2.3922
11	1645.51	748.48	2.4033
12	1427.16	749.86	2.0844
13	1645.51	749.53	2.4033
14	1645.51	749.39	2.4033
15	1645.51	749.69	2.4033
16	1427.16	749.36	2.0844
17	1645.51	749.23	2.4033
18	1154.56	749.35	1.6863
19	1305.39	749.35	1.9065
20	1154.56	749.41	1.6863
21	1154.56	749.41	1.6863
22	1305.39	750.46	1.9065
23	1154.56	750.46	1.6863
24	1645.51	749.53	2.4033
25	1207.46	749.20	1.7635
26	1305.39	749.81	1.9065
27	1154.56	749.81	1.6863
28	1305.39	750.04	1.9065
29	1305.39	750.04	1.9065
30	1427.16	749.50	2.0844
31	1645.51	749.70	2.4033
32	1645.51	749.35	2.4033
33	1645.51	749.07	2.4033
34	1305.39	749.17	1.9065
35	1305.39	749.17	1.9065
36	1207.46	749.26	1.7635
37	1427.16	749.44	2.0844
38	1427.16	749.36	2.0844
39	1305.39	749.84	1.9065
40	1305.39	749.84	1.9065
41	1645.51	749.45	2.4033
42	1460.23	749.69	2.1327
43	1305.39	749.38	1.9065
44	1305.39	749.38	1.9065
45	1474.73	749.33	2.1539
46	1474.73	749.67	2.1539
47	1305.39	749.98	1.9065
48	1267.85	749.33	1.8517
TOTAL	68469.01 S.F.		100.00%



FOUNDATION PLAN
(EXTERIOR DIMENSIONS)

James R. Keefe 3-25-09
JAMES R. KEEFE
PROFESSIONAL ENGINEER NO. 58389

David L. Elwell 03-25-09
DAVID L. ELWELL
PROFESSIONAL SURVEYOR NO. 6333



REVISIONS	DATE	DESCRIPTION	BY

KS Associates, Inc.
260 Burns Road, Suite 100
Elyria, OH 44035
P 440 365 4730
F 440 365 4790
www.ksassociates.com

**CHESAPEAKE CONDOMINIUM
PHASE NO. 13**
PART OF
ORIGINAL CARLISLE TOWNSHIP SECTION NO. 5
CITY OF ELYRIA COUNTY OF LORAIN STATE OF OHIO

SHEET
2
OF
2
JOB NO.
04142-CP13