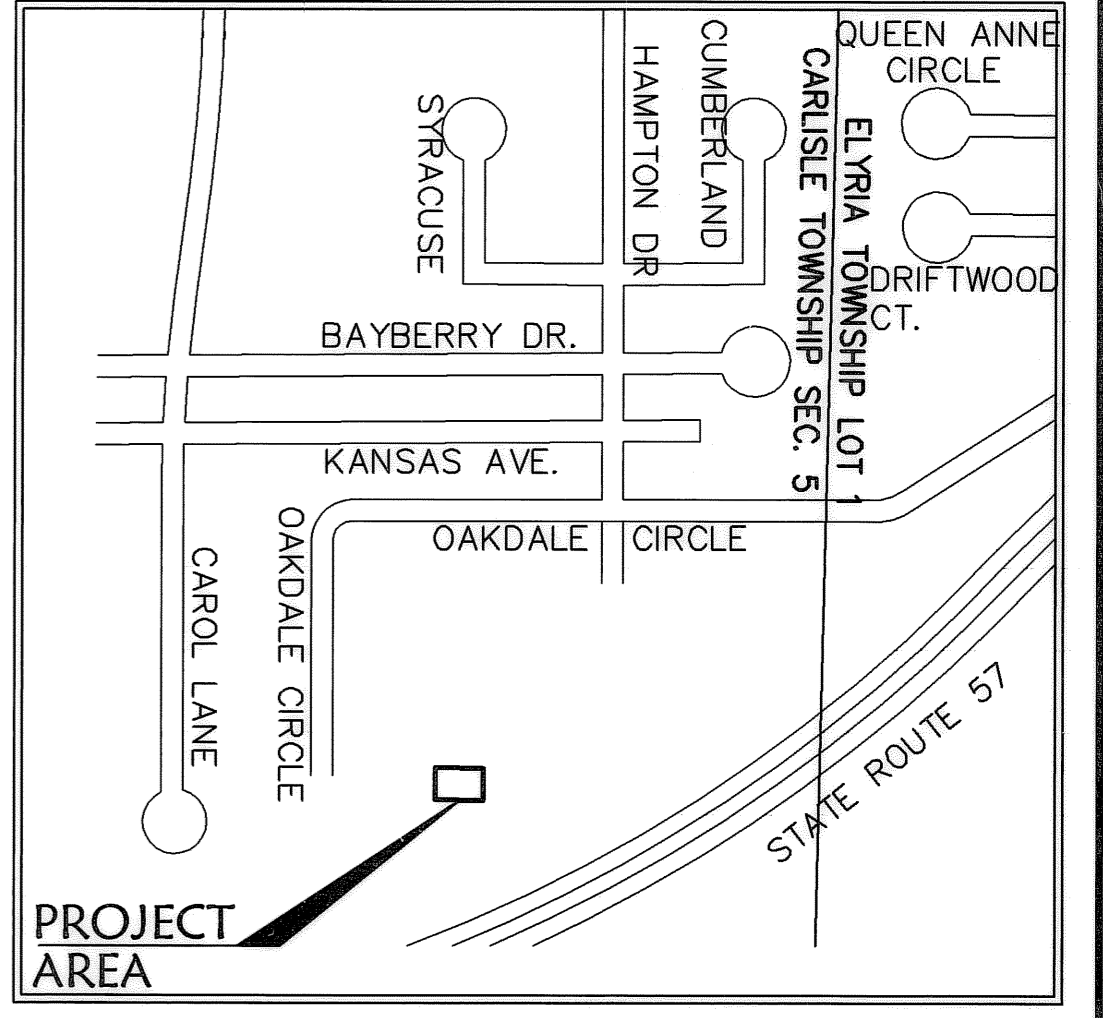
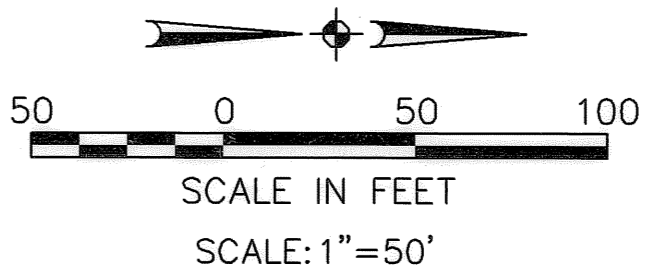
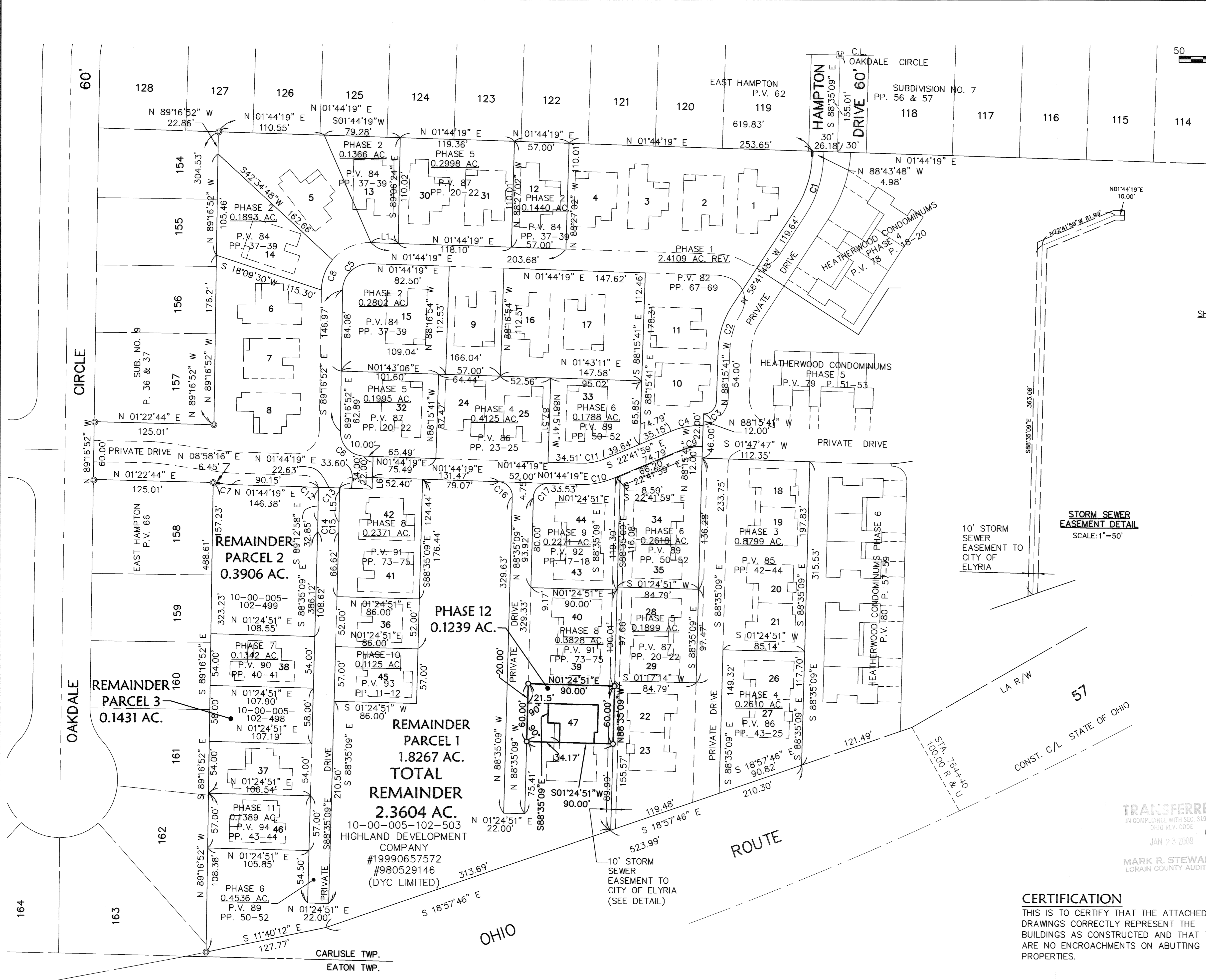


R:\04000\04142-CP12\ldat\control\dwg\12-PLAT01.dwg 1/15/2009 9:41:26 AM EST



AREA MAP - NO SCALE

SHEET INDEX

SHEET NO.	DESCRIPTION
1	SURVEY MAP
2	FLOOR & FOUNDATION PLANS & ELEVATIONS

BEARING SYSTEM IS TAKEN FROM THE HEATHERWOOD PROJECT.

LINE DATA

LINE	DISTANCE	BEARING
L1	28.58'	N 01°44'19" E
L2	8.29'	S 89°06'24" E
L3	3.79'	N 00°53'36" E
L4	9.11'	N 66°18'03" E
L5	31.84'	S 89°12'58" E
L6	12.00'	N 88°15'41" W

LEGEND

- - IRON PIN/PIPE FOUND
- ⊗ - MONUMENT BOX FOUND
- ⊙ - 5/8" CAPPED REBAR SET
- - - PK NAIL SET

PHASE 12 TOTAL = 0.1239 AC.

CURVE DATA

CURVE	RADIUS	LENGTH	TANGENT	DELTA	CHORD	BEARING
C1	105.63'	59.06'	30.32'	32°02'01"	58.29'	N72°42'48"W
C2	88.73'	48.88'	25.08'	31°33'53"	48.27'	S72°28'44"E
C3	13.00'	20.42'	13.00'	90°00'00"	18.38'	N43°15'41"W
C4	81.00'	34.55'	17.54'	24°26'18"	34.29'	S10°28'50"E
C5	28.00'	44.48'	28.50'	91°01'11"	39.95'	N43°46'16"W
C6	25.00'	38.82'	24.56'	88°58'49"	35.04'	S46°13'44"W
C7	125.62'	13.25'	6.63'	6°02'35"	13.24'	N04°51'23"E
C8	50.00'	34.04'	17.71'	39°00'21"	33.39'	S69°46'41"E
C9	59.00'	25.17'	12.78'	24°26'18"	24.97'	N10°28'50"W
C10	81.00'	34.55'	17.54'	24°26'18"	34.29'	S10°28'50"E
C11	59.00'	25.17'	12.78'	24°26'18"	24.97'	N10°28'50"W
C12	15.00'	2.74'	1.37'	10°26'51"	2.73'	N85°34'18"E
C13	15.00'	3.38'	1.70'	12°54'42"	3.37'	S82°45'44"E
C14	973.95'	10.88'	5.44'	00°38'24"	10.88'	S88°54'03"E
C15	1033.24'	11.12'	5.56'	00°37'00"	11.12'	S88°54'03"E
C16	15.00'	23.47'	14.91'	89°39'32"	21.15'	S46°34'35"W
C17	15.00'	23.64'	15.08'	90°18'26"	21.27'	S43°25'25"E

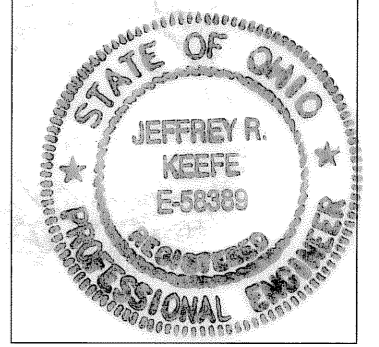
STORM SEWER EASEMENT DETAIL
SCALE: 1"=50'

TRANSFERRED
IN COMPLIANCE WITH SEC. 319-20
OHIO REV. CODE
JAN 23 2009

MARK R. STEWART
LORAIN COUNTY AUDITOR

Jeffrey R. Keeffe
Umn

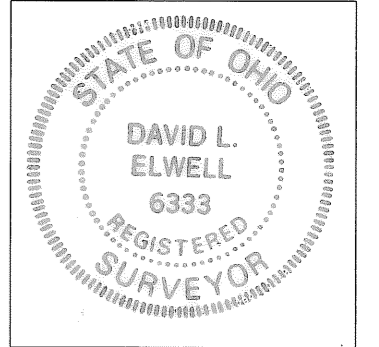
JEFFREY R. KEEFFE
PROFESSIONAL ENGINEER NO. 58389



CERTIFICATION

THIS IS TO CERTIFY THAT THE ATTACHED DRAWINGS CORRECTLY REPRESENT THE BUILDINGS AS CONSTRUCTED AND THAT THERE ARE NO ENCROACHMENTS ON ADJUTING PROPERTIES.

David L. Elwell
DAVID L. ELWELL
PROFESSIONAL SURVEYOR NO. 6333

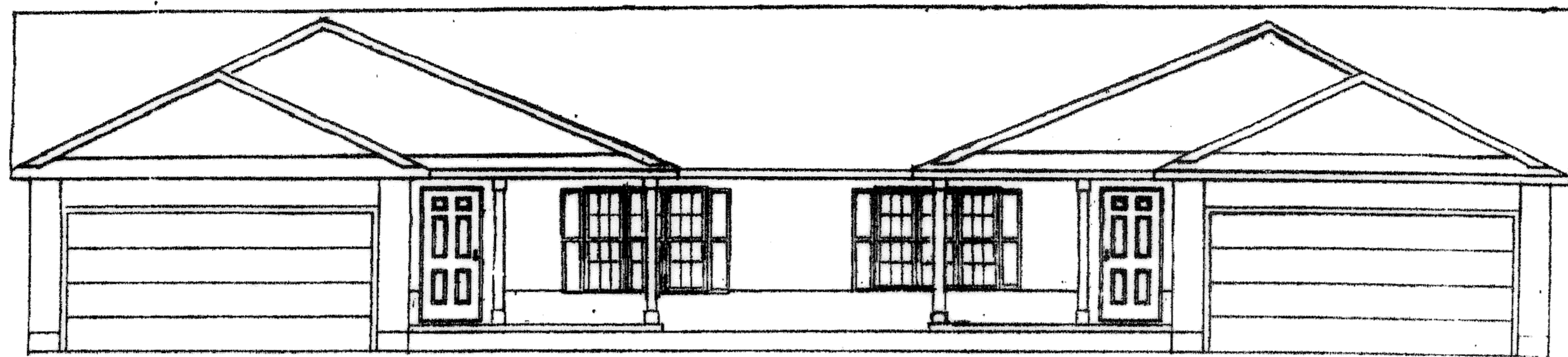
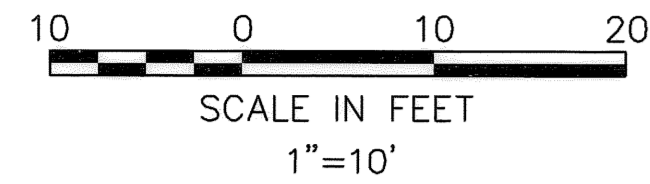


DATE	DESCRIPTION	BY
1-13-09		

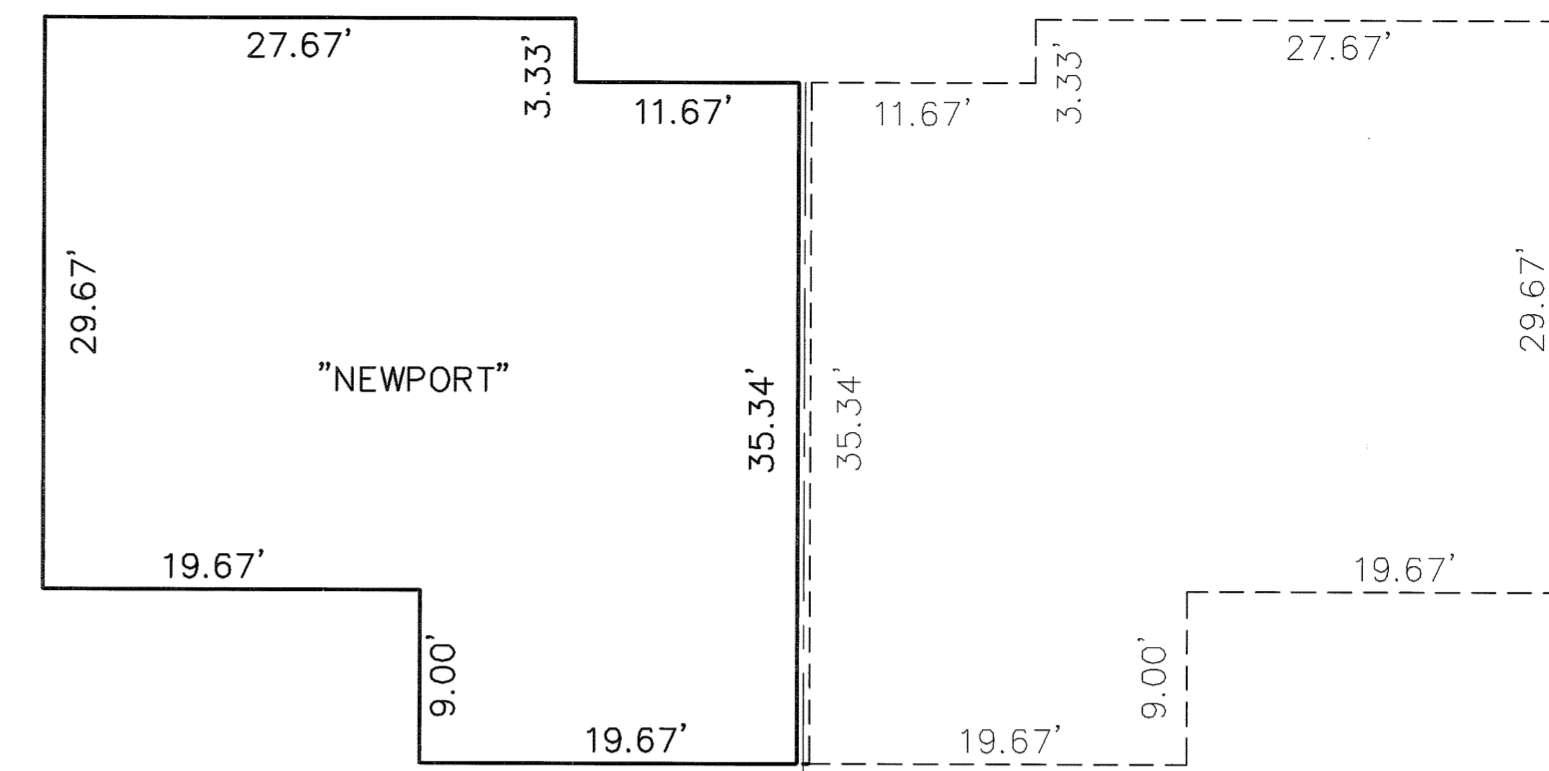
KS ASSOCIATES
KS Associates, Inc.
260 Burns Road, Suite 100
Elyria, OH 44035
P 440 365 4730
F 440 365 4790
www.ksassociates.com

CHESAPEAKE CONDOMINIUM PHASE NO. 12
PART OF
ORIGINAL CARLISLE TOWNSHIP SECTION NO. 5
CITY OF ELYRIA COUNTY OF LORAIN STATE OF OHIO

SHEET	1	OF	2
JOB NO.	04142-CP12		

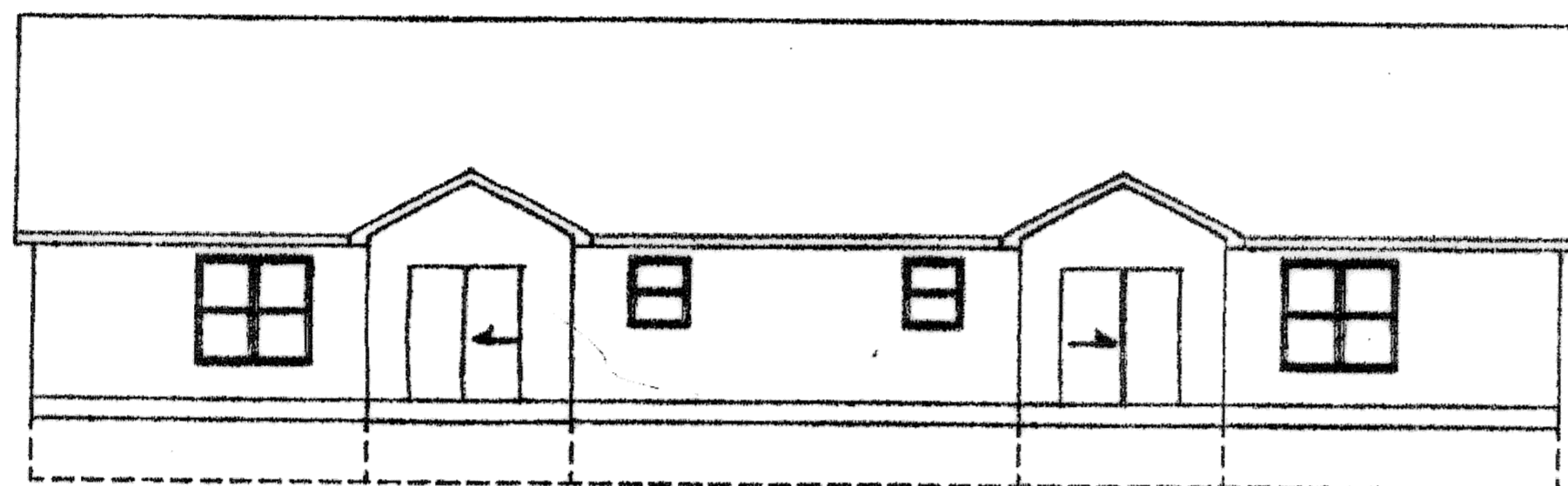


FRONT ELEVATION
NEWPORT MODEL

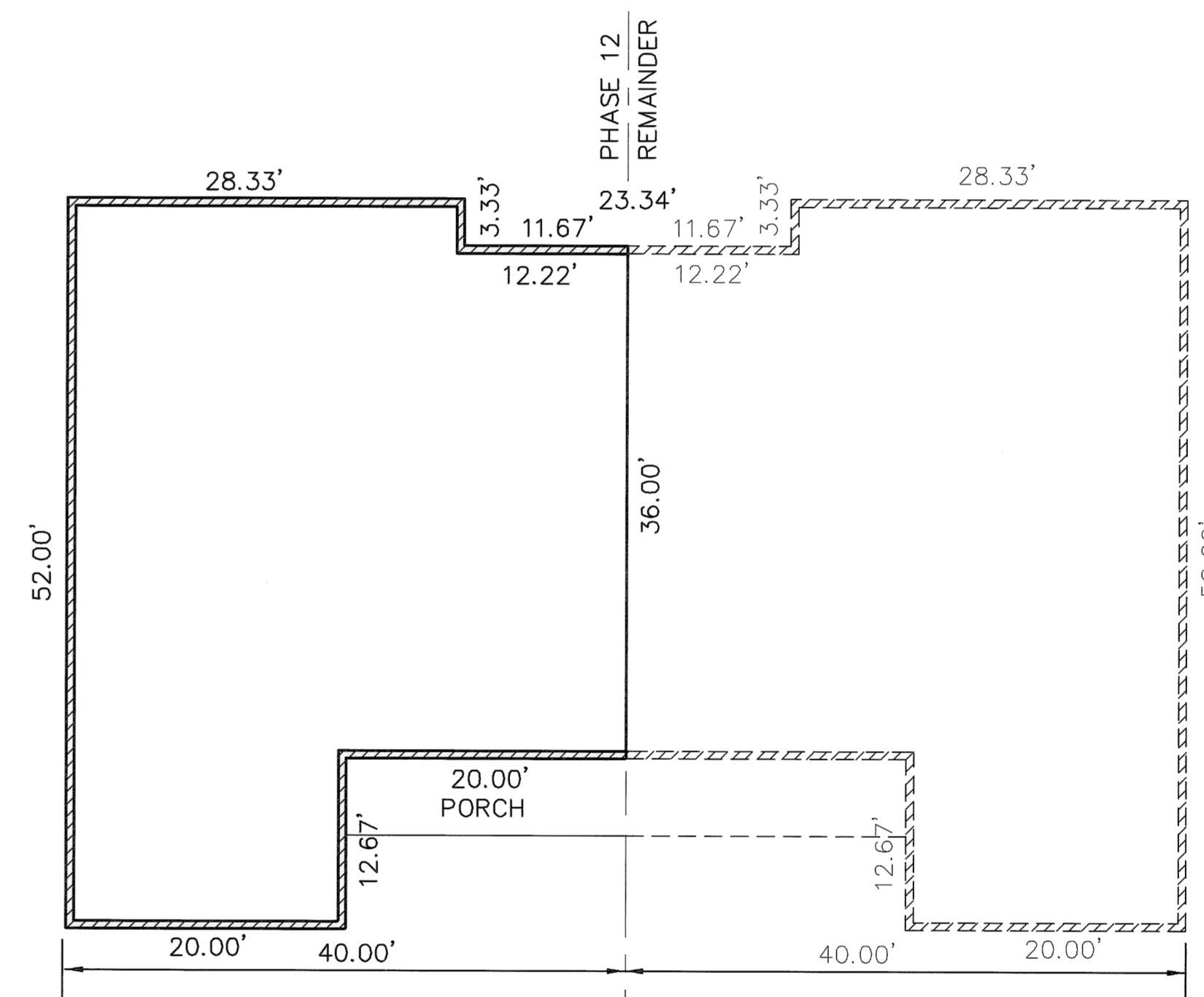


UNIT 47

FIRST FLOOR PLAN
(INTERIOR DIMENSIONS)



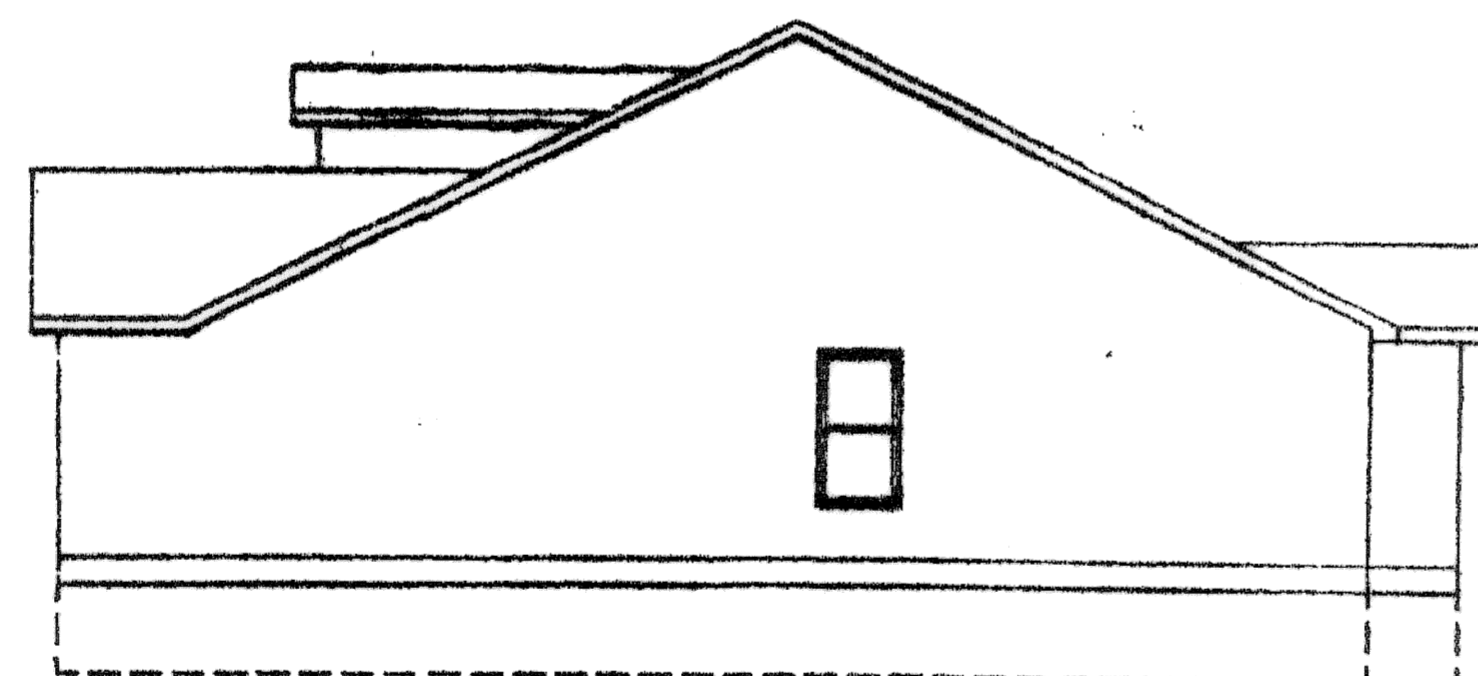
REAR ELEVATION



FOUNDATION PLAN
(EXTERIOR DIMENSIONS)

OWNERSHIP PERCENTAGES

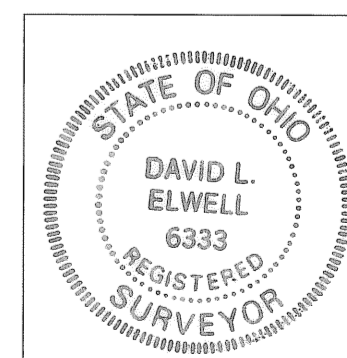
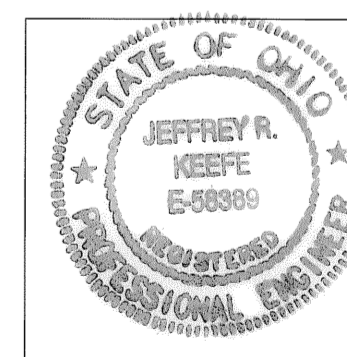
UNIT NO.	SQ. FT.	ELEV. F.F.	% OWNERSHIP
1	1427.16	748.93	2.1237
2	1645.51	749.08	2.4486
3	1427.16	749.45	2.1237
4	1637.92	749.47	2.4373
5	1427.16	749.50	2.1237
6	1427.16	749.44	2.1237
7	1645.51	749.42	2.4486
8	1427.16	749.44	2.1237
9	1645.51	749.84	2.4486
10	1637.92	749.45	2.4373
11	1645.51	748.48	2.4486
12	1427.16	749.86	2.1237
13	1645.51	749.53	2.4486
14	1645.51	749.39	2.4486
15	1645.51	749.69	2.4486
16	1427.16	749.36	2.1237
17	1645.51	749.23	2.4486
18	1154.56	749.35	1.7181
19	1305.39	749.35	1.9425
20	1154.56	749.41	1.7181
21	1154.56	749.41	1.7181
22	1305.39	750.46	1.9425
23	1154.56	750.46	1.7181
24	1645.51	749.53	2.4486
25	1207.46	749.20	1.7968
26	1305.39	749.81	1.9425
27	1154.56	749.81	1.7181
28	1305.39	750.04	1.9425
29	1305.39	750.04	1.9425
30	1427.16	749.50	2.1237
31	1645.51	749.70	2.4486
32	1645.51	749.35	2.4486
33	1645.51	749.07	2.4486
34	1305.39	749.17	1.9425
35	1305.39	749.17	1.9425
36	1207.46	749.26	1.7968
37	1427.16	749.44	2.1237
38	1427.16	749.36	2.1237
39	1305.39	749.84	1.9425
40	1305.39	749.84	1.9425
41	1645.51	749.45	2.4486
42	1460.23	749.69	2.1729
43	1305.39	749.38	1.9425
44	1305.39	749.38	1.9425
45	1474.73	749.33	2.1945
46	1474.73	749.67	2.1945
47	1305.39	749.98	1.9425
TOTAL	67201.16 S.F.		100.00%



SIDE ELEVATION

Jeffrey R. Keefe 1-15-09
JEFFREY R. KEEFE
PROFESSIONAL ENGINEER NO. 58389

David L. Elwell 1-15-09
DAVID L. ELWELL
PROFESSIONAL SURVEYOR NO. 6333



REVISIONS	DATE	DESCRIPTION	BY

KS
KS ASSOCIATES
KS Associates, Inc.
260 Burns Road, Suite 100
Elyria, OH 44035
P 440 365 4730
F 440 365 4790
www.ksassociates.com

**CHESAPEAKE CONDOMINIUM
PHASE NO. 12**
PART OF
ORIGINAL CARLISLE TOWNSHIP SECTION NO. 5
CITY OF ELYRIA COUNTY OF LORAIN STATE OF OHIO

SHEET
2
OF
2
JOB NO.
04142-CP12