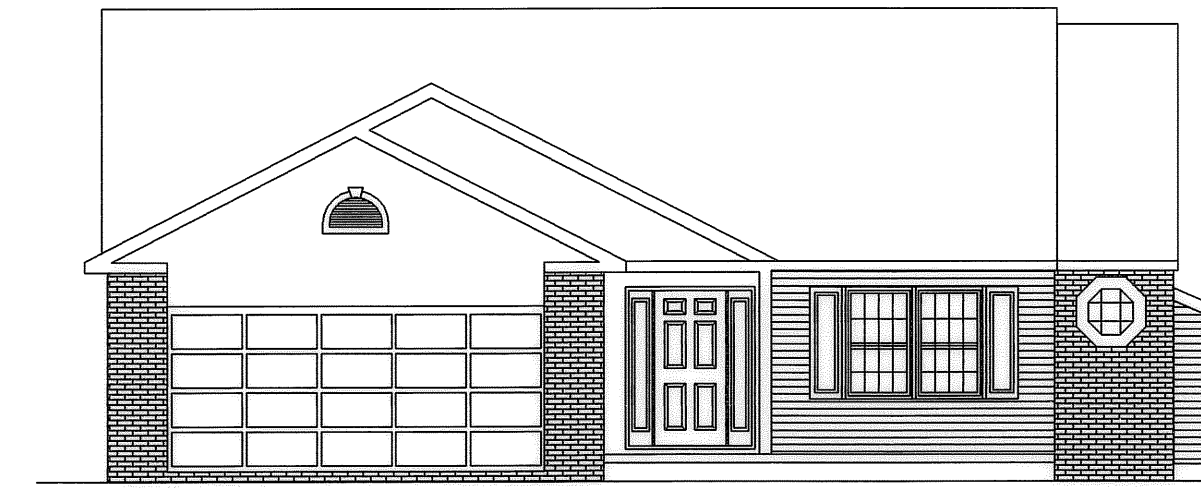
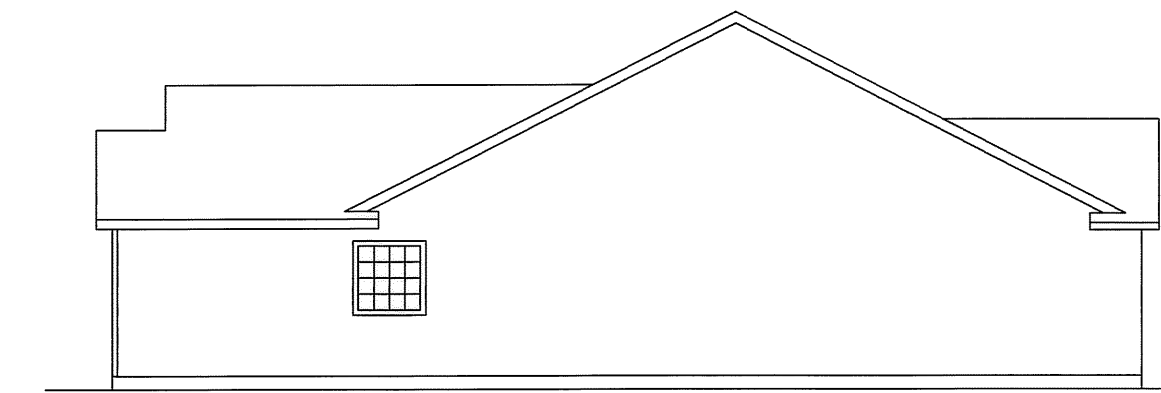


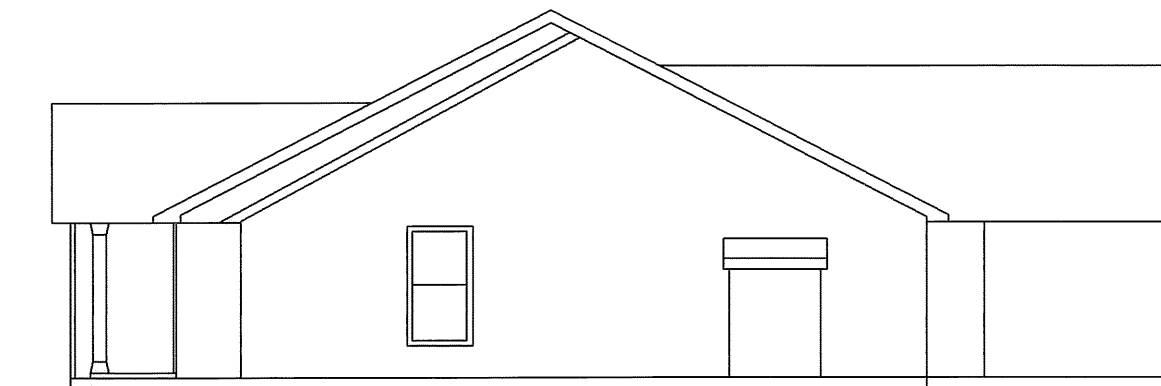
FIRST FLOOR PLAN  
(INTERIOR DIMENSIONS)  
ROBIN MODEL



FRONT ELEVATION  
ROBIN MODEL



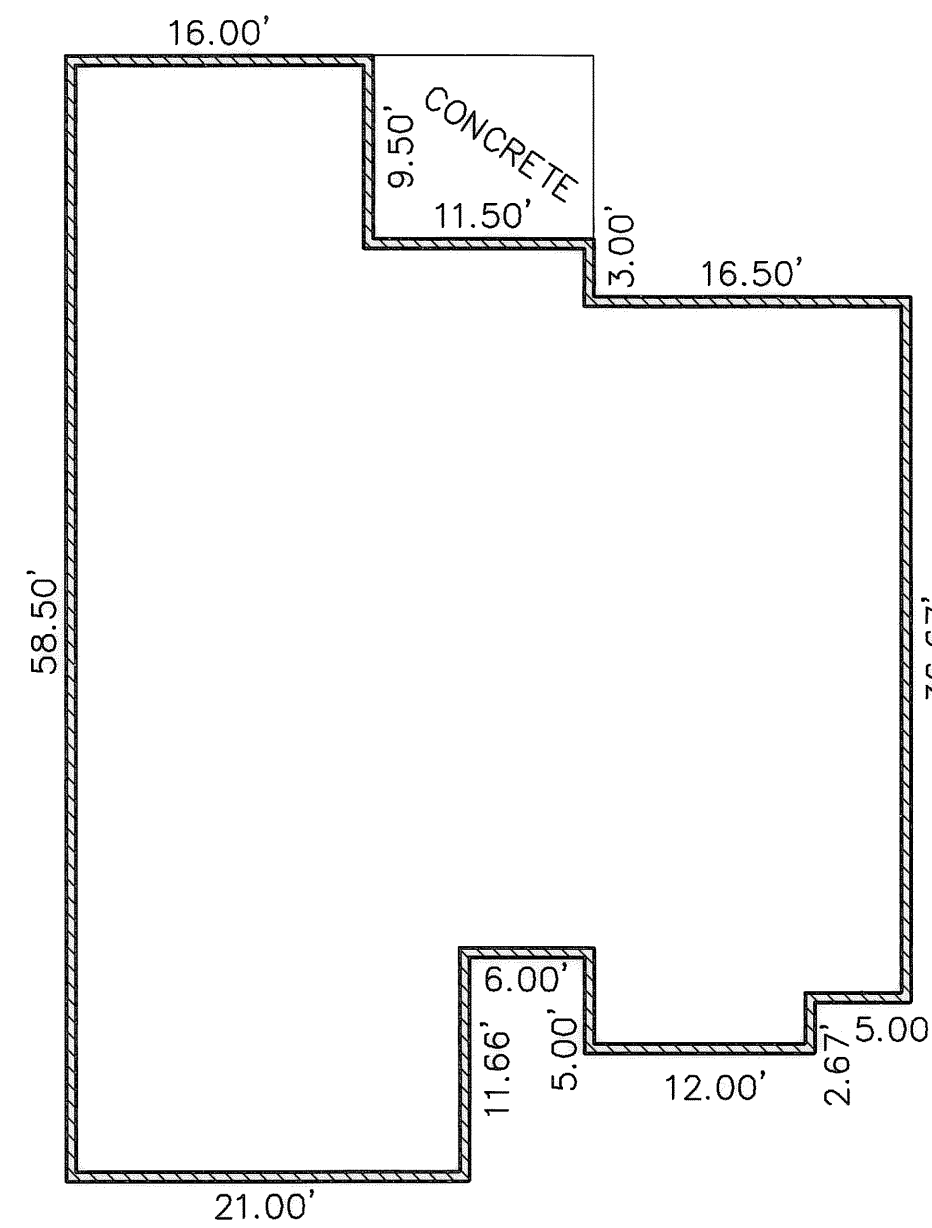
LEFT SIDE ELEVATION



RIGHT SIDE ELEVATION



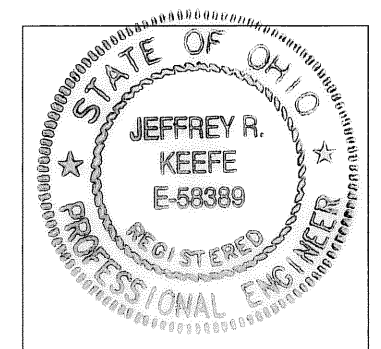
REAR ELEVATION



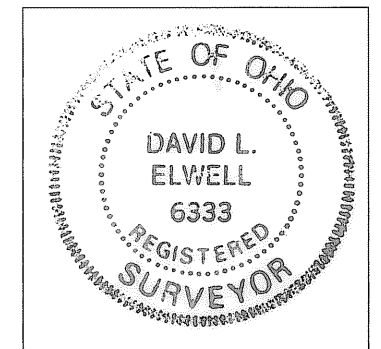
FOUNDATION PLAN  
(EXTERIOR DIMENSIONS)  
ROBIN MODEL

OWNERSHIP PERCENTAGES

UNIT NO.	SQ. FT.	ELEV. F.F.	% OWNERSHIP
1	1427.16	748.93	2.1658
2	1645.51	749.08	2.4971
3	1427.16	749.45	2.1658
4	1637.92	749.47	2.4856
5	1427.16	749.50	2.1658
6	1427.16	749.44	2.1658
7	1645.51	749.42	2.4971
8	1427.16	749.44	2.1658
9	1645.51	749.84	2.4971
10	1637.92	749.45	2.4856
11	1645.51	748.48	2.4971
12	1427.16	749.86	2.1658
13	1645.51	749.53	2.4971
14	1645.51	749.39	2.4971
15	1645.51	749.69	2.4971
16	1427.16	749.36	2.1658
17	1645.51	749.23	2.4971
18	1154.56	749.35	1.7521
19	1305.39	749.35	1.9810
20	1154.56	749.41	1.7521
21	1154.56	749.41	1.7521
22	1305.39	750.46	1.9810
23	1154.56	750.46	1.7521
24	1645.51	749.53	2.4971
25	1207.46	749.20	1.8324
26	1305.39	749.81	1.9810
27	1154.56	749.81	1.7521
28	1305.39	750.04	1.9810
29	1305.39	750.04	1.9810
30	1427.16	749.50	2.1658
31	1645.51	749.70	2.4971
32	1645.51	749.35	2.4971
33	1645.51	749.07	2.4971
34	1305.39	749.17	1.9810
35	1305.39	749.17	1.9810
36	1207.46	749.26	1.8324
37	1427.16	749.44	2.1658
38	1427.16	749.36	2.1658
39	1305.39	749.84	1.9810
40	1305.39	749.84	1.9810
41	1645.51	749.45	2.4971
42	1460.23	749.69	2.2160
43	1305.39	749.38	1.9810
44	1305.39	749.38	1.9810
45	1474.73	749.33	2.2380
46	1474.73	749.67	2.2380
<b>TOTAL</b>	<b>65895.77 S.F.</b>		<b>100.00%</b>



*Jeffrey R. Keefe*  
JEFFREY R. KEEFE  
PROFESSIONAL ENGINEER NO. 58389



*David L. Elwell*  
DAVID L. ELWELL  
PROFESSIONAL SURVEYOR NO. 6333

R:\04000\04142-CP11\ddet\control\dwg\11-PLAN01.dwg 10/23/2008 9:01:21 AM EDT

DATE	DESCRIPTION	BY

**KS** Associates, Inc.  
260 Burns Road, Suite 100  
Elyria, OH 44035  
P 440 365 4730  
F 440 365 4790  
www.ksassociates.com

**CHESAPEAKE CONDOMINIUM  
PHASE NO. 11**  
PART OF  
ORIGINAL CARLISLE TOWNSHIP SECTION NO. 5  
CITY OF ELYRIA COUNTY OF LORAIN STATE OF OHIO

SHEET  
2  
OF  
2  
JOB NO.  
04142-CP11