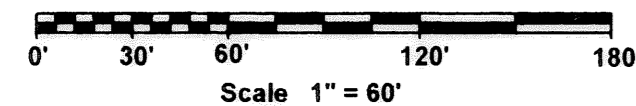


LORAIN COUNTY AIRCRAFT STORAGE AND OFFICE CONDOMINIUM, A COMMERCIAL CONDOMINIUM

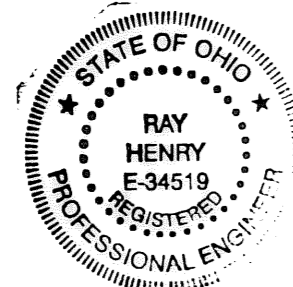
SITUATED IN ORIGINAL RUSSIA TOWNSHIP LOT 19, IN THE COUNTY OF LORAIN, AND STATE OF OHIO



THE UNDERSIGNED HERBY CERTIFIES THAT THIS PLAT WAS PREPARED FROM AN ACTUAL SURVEY, THAT THE SAME SHOWS GRAPHICALLY, INsofar AS POSSIBLE, THE LOCATION OF THE BOUNDARIES, THE LAYOUT, LENGTH, WIDTH, HEIGHT, AND SQUARE FOOTAGE OF SUCH UNITS AS BUILT OR CONSTRUCTED; THE BOUNDARIES, LOCATION AND DIMENSIONS OF COMMON ELEMENTS AND LIMITED COMMON ELEMENTS THE LOCATION, DESCRIPTION AND DIMENSIONS OF ALL APPURTENANT EASEMENTS; THE LOCATION OF IMPROVEMENTS AND RECORDED EASEMENTS; AND THAT THERE ARE NO ENCROACHMENTS UPON THE SUBJECT PREMISES OTHER THAN SHOWN. THE PURPOSE OF THIS CERTIFICATION IS TO COMPLY, IN ALL RESPECTS, WITH THE PROVISIONS UNDER SECTION 5311.07 OF THE OHIO REVISED CODE.

Patrick A. McGannon 7/22/08
 PATRICK A. MCGANNON, P.S. 7154 DATE
 REGISTERED PROFESSIONAL SURVEYOR

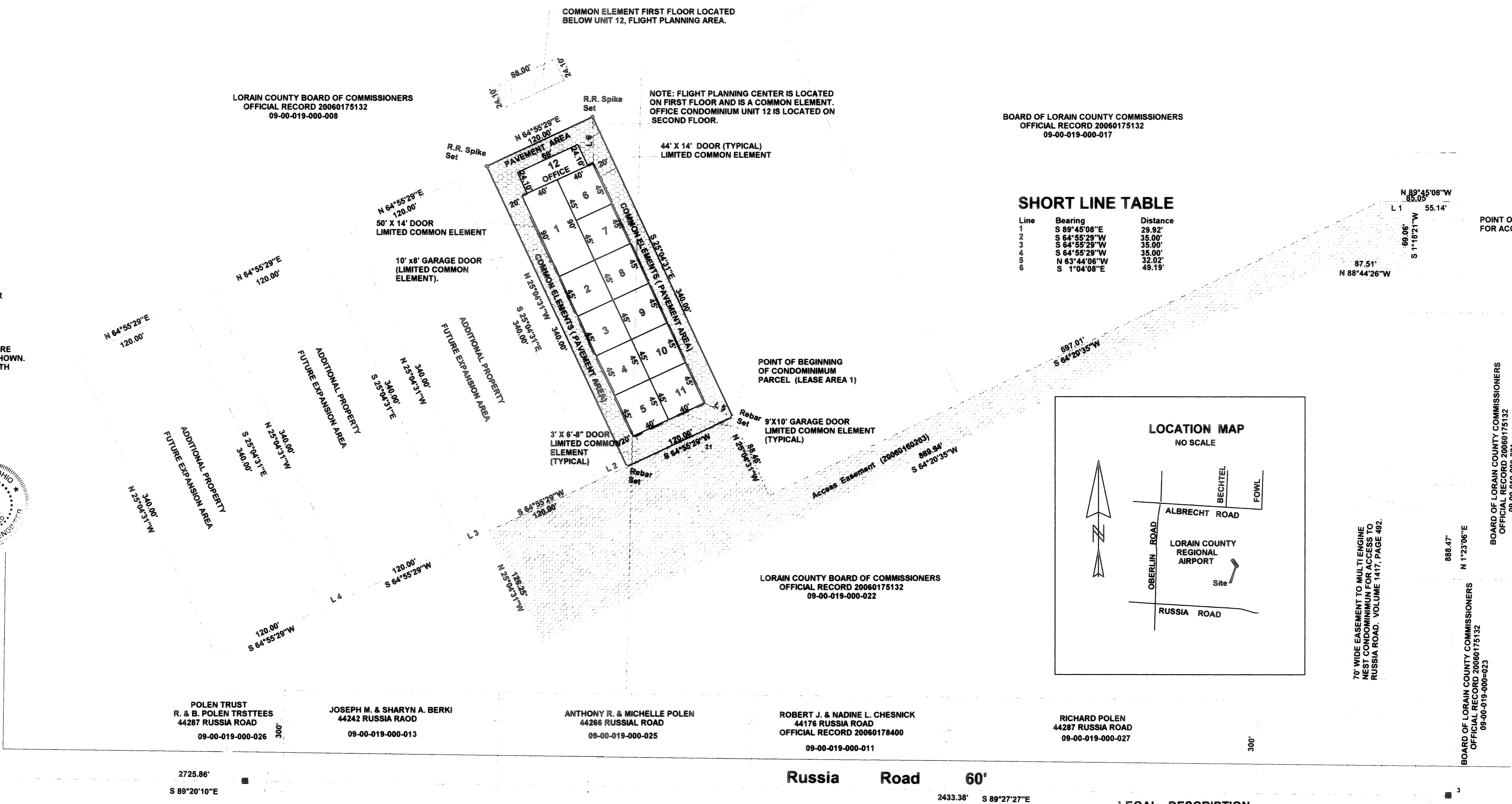
Ray Henry
 RAY HENRY P.E., P.S. 34519 DATE
 REGISTERED PROFESSIONAL ENGINEER



THE DECLARATION OF CONDOMINIUM AND BYLAWS OF THE UNIT OWNER ASSOCIATION ARE RECORDED IN INSTRUMENT NUMBER _____ IN THE OFFICIAL RECORDS OF LORAIN COUNTY OHIO, OF THE LORAIN COUNTY AIRPORT STORAGE CONDOMINIUMS.

THE PERCENTAGE OF INTEREST IN THE COMMON ELEMENTS WHICH IS OWNED BY EACH UNIT IS SET FORTH IN THE CONDOMINIUM DECLARATION.

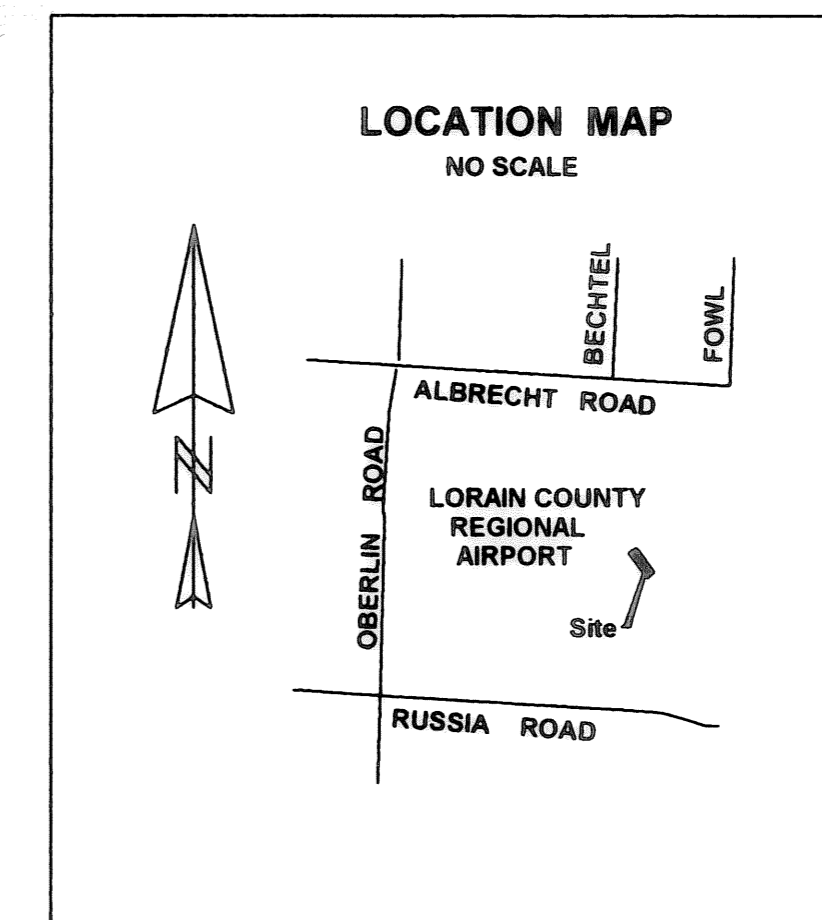
Oberlin Road



BOARD OF LORAIN COUNTY COMMISSIONERS
 OFFICIAL RECORD 20060175132
 09-00-019-000-017

SHORT LINE TABLE

Line	Bearing	Distance
1	S 89°45'08" E	29.92'
2	S 64°55'29" W	35.00'
3	S 64°55'29" W	35.00'
4	S 64°55'29" W	35.00'
5	N 63°44'08" W	32.02'
6	S 1°04'08" E	48.19'



LORAIN COUNTY BOARD OF COMMISSIONERS
 OFFICIAL RECORD 20060175132
 09-00-019-000-022

ROBERT J. & NADINE L. CHESNICK
 44176 RUSSIA ROAD
 OFFICIAL RECORD 20060178400
 09-00-019-000-011

RICHARD POLEN
 44287 RUSSIA ROAD
 09-00-019-000-027

LEGAL DESCRIPTION

CONDOMINIUM PARCEL, LEASE AREA 1, (LORAIN COUNTY REGIONAL AIRPORT)

SITUATED IN THE TOWNSHIP OF RUSSIA, COUNTY OF LORAIN, STATE OF OHIO AND KNOWN AS BEING A PART OF ORIGINAL RUSSIA TOWNSHIP, LOT NUMBER 19, ALSO BEING PART OF THE LAND CONVEYED TO THE LORAIN COUNTY REGIONAL AIRPORT AUTHORITY AS RECORDED IN VOLUME 996, PAGE 831 OF THE LORAIN COUNTY RECORDS, BEING MORE DEFINITELY DESCRIBED AS FOLLOWS:

COMMENCING AT AN IRON PIN FOUND LOCATED IN A MONUMENT BOX AT THE INTERSECTION OF THE CENTERLINES OF OBERLIN ROAD AND RUSSIA ROAD;

THENCE SOUTH 89°20'10" EAST IN THE CENTERLINE OF RUSSIA ROAD A DISTANCE OF 2,725.86 FEET TO AN IRON PIN FOUND SET IN A MONUMENT BOX AT AN ANGLE POINT IN THE CENTERLINE OF RUSSIA ROAD;

THENCE CONTINUING IN THE CENTERLINE OF RUSSIA ROAD SOUTH 89°27'27" EAST A DISTANCE OF 2,433.38 FEET TO AN IRON PIN FOUND SET IN A MONUMENT BOX AT THE SOUTHEASTERLY CORNER OF LAND CONVEYED TO THE LORAIN COUNTY REGIONAL AIRPORT AUTHORITY AS RECORDED IN VOLUME 996, PAGE 831 OF THE LORAIN COUNTY LAND RECORDS;

THENCE NORTH 01°23'06" EAST IN A LINE A DISTANCE OF 888.47 FEET TO A POINT;

THENCE NORTH 89°45'08" WEST IN A LINE A DISTANCE OF 85.05 FEET TO A POINT;

THENCE SOUTH 64°20'35" WEST IN A LINE A DISTANCE OF 697.01 FEET TO A POINT;

THENCE NORTH 25°04'31" WEST IN A LINE A DISTANCE OF 88.46 FEET TO A REBAR SET AND THE PRINCIPAL POINT OF BEGINNING OF THE LAND HEREINAFTER DESCRIBED;

THENCE SOUTH 64°55'29" WEST IN A LINE A DISTANCE OF 120.00 FEET TO A REBAR SET;

THENCE NORTH 25°04'31" WEST IN A LINE A DISTANCE OF 340.00 FEET TO A RAILROAD SPIKE SET;

THENCE NORTH 64°55'29" EAST IN A LINE A DISTANCE OF 120.00 FEET TO A RAILROAD SPIKE SET;

THENCE SOUTH 25°04'31" EAST IN A LINE A DISTANCE OF 340.00 FEET A REBAR SET AND THE PRINCIPAL POINT OF BEGINNING OF THE LAND HEREIN DESCRIBED AND CONTAINING 0.9366 ACRE OF LAND BE THE SAME MORE OR LESS AS WAS SURVEYED BY PATRICK A. MCGANNON REGISTERED PROFESSIONAL SURVEYOR NUMBER 7154 IN JUNE 2008.

LEGEND

- IRON PIN FOUND IN MONUMENT BOX
- RAIL ROAD SPIKE SET
- CAPPED REBAR SET
- CONDOMINIUM UNIT AREA
- ▨ COMMON ELEMENT PAVEMENT
- ▩ COMMON ELEMENT (ACCESS EASEMENT)
- ▧ COMMON ELEMENT, FLIGHT PLANNING AREA FIRST FLOOR, LIMITED COMMON ELEMENT GARAGE AND MAN DOORS

AIRCRAFT STORAGE SPACE UNIT DIMENSIONS

STORAGE UNIT NUMBER	WIDTH	DEPTH	HEIGHT	S.F.
1	90 FT	40.00 FT	18'	3600 S.F.
2-11	45 FT	40.00 FT	18'	1800 S.F.
OFFICE UNIT DIMENSIONS	68 FT	24.10 FT	8' (SECOND STORY)	1638 S.F.

NOTE: THE LORAIN COUNTY AIRPORT, OFFICE AND STORAGE CONDOMINIUMS LEASE AREA ONE CONTAINS 0.9366 OF AN ACRE, AND LEASE AREA TWO CONTAINS 0.9366 OF AN ACRE. THE TOTAL AREA OF BOTH LEASE AREA ONE AND TWO IS 1.8732 ACRES.

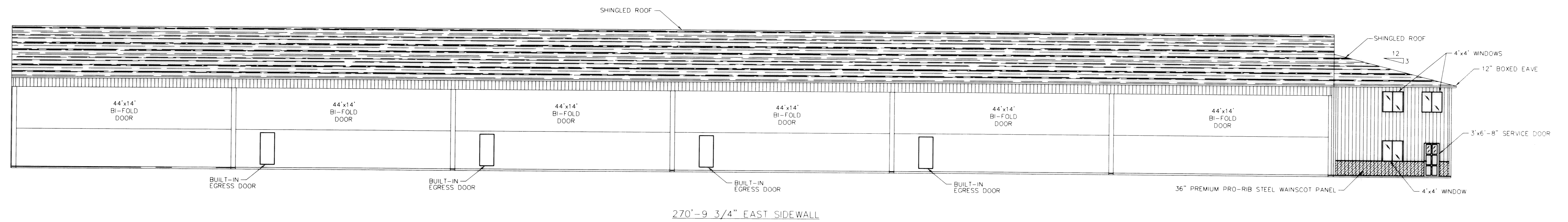
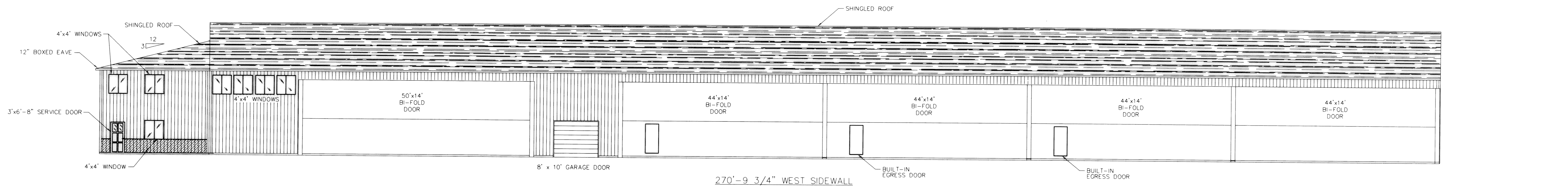
COMMON ELEMENT OWNERSHIP PER UNIT PERCENTAGE

UNIT	PERCENTAGE EACH
1	15.50%
2-11	7.78%
12	7.00%

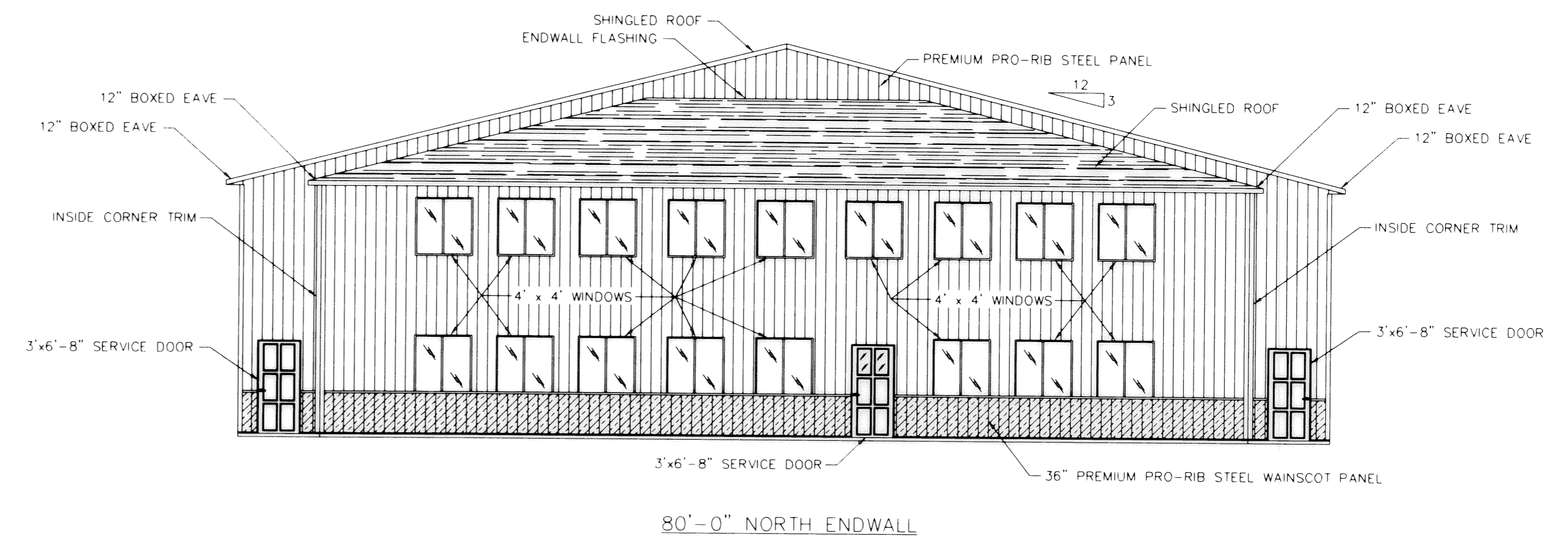
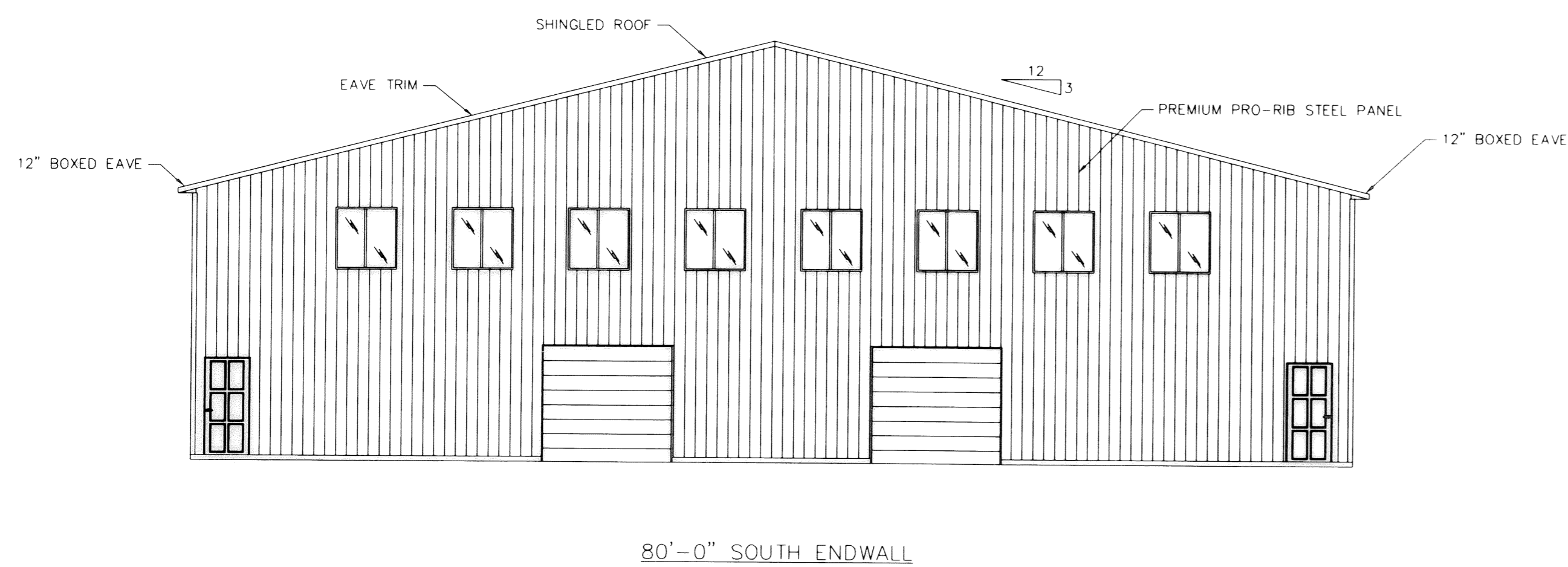
TRANSFERRED
 IN COMPLIANCE WITH SEC. 519-202
 OHIO REV. CODE

SEP 24 2008

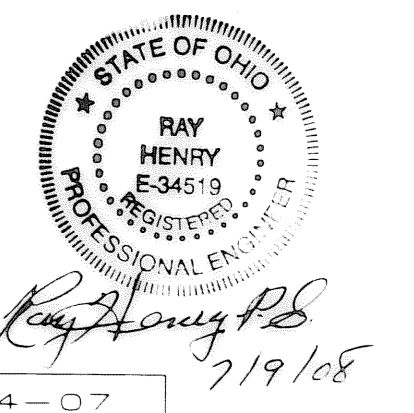
MARK R. STEWART
 LORAIN COUNTY AUDITOR



SIDEWALL ELEVATIONS
1/8"=1'-0"



ENDWALL ELEVATIONS
1/8"=1'-0"



PROJECT TITLE	LORAIN COUNTY HANGARS ELYRIA, OH		
SHEET TITLE	ELEVATIONS		

DATE	08-14-07		
REVISIONS	JOB NAME	LORAIN HANGAR	SCALE
NO.	DATE	DESCRIPTION	TITLE BY AS NOTED
1			
2			
3			
SHEET NO.			2/2
OF			2