

EXHIBIT B
 DRAWINGS FOR OF CONDOMINIUM
 CONCORD VILLAGE CONDOMINIUM PHASE 2
 BEING A PART OF LAND CONVEYED TO SCHAFER DEVELOPMENT COMPANY INC.
 BY DEED RECORDED IN IN INSTRUMENT NO. 2007022989 OF LORAIN COUNTY RECORDS
 IN ORIGINAL AVON TOWNSHIP SECTION 9 AND 16
 NOW IN THE CITY OF AVON - LORAIN COUNTY - STATE OF OHIO
 JULY 29, 2008
 SCALE 1 INCH = 30 FEET

GRANTOR: SCHAFER DEVELOPMENT COMPANY INC.

P.P.N. 04-00-016-101-128
 AERC AVON LLC
 INST.# 20000709019

Center Road (60' Wide)

CURVE TABLE						
CURVE	LENGTH	RADIUS	TANGENT	CHORD	BEARING	DELTA
C1	16.35	220.00	8.18	16.35	N01°30'29"W	475°30"

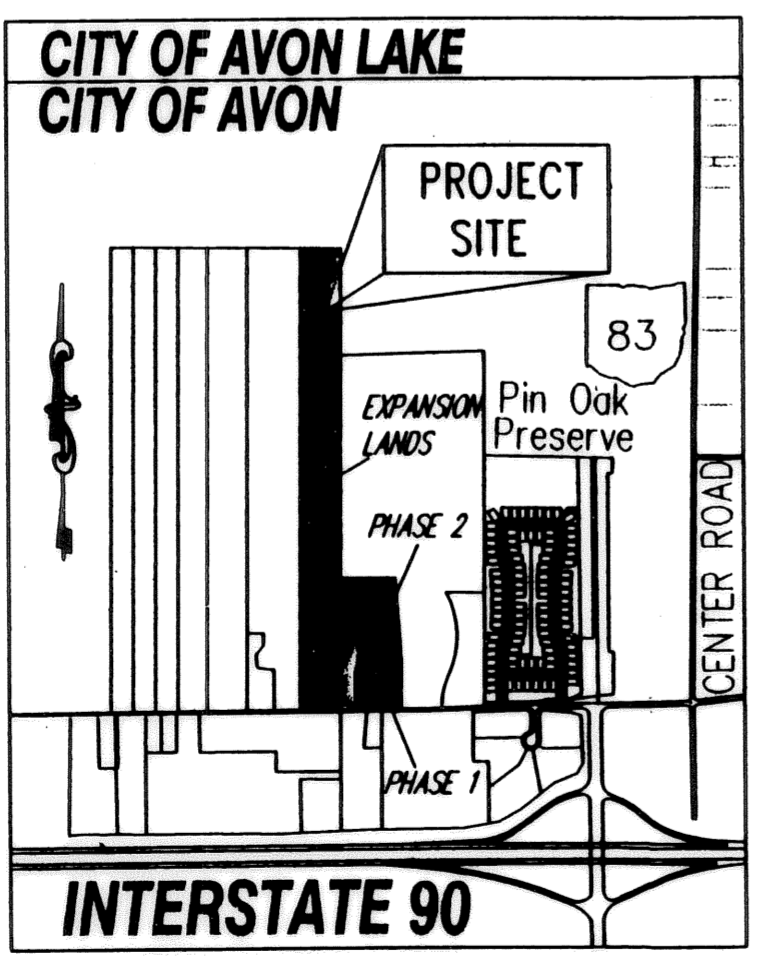
BOUNDARY SURVEY LEGEND

- 5/8" IRON PIN SET
 - IRON PIN/PIPE FOUND
 - MON BOX FOUND WITH PIN/PIPE
 - MONUMENT BOX FOUND EMPTY
 - ▲ SURVEY NAIL SET
 - ▲ SURVEY NAIL FOUND
 - STONE MONUMENT FOUND
- A., ACT. ACTUAL MEASUREMENT OR CALCULATION
 U., USED USED MEASUREMENT OR MONUMENT
 M., MSD MEASURED
 D., R., REC. DEED OR RECORD
 CALC. CALCULATED
 C/L CENTERLINE
 O., OBS. OBSERVED
 P.P.N. PERMANENT PARCEL NUMBER

TRANSFERRED
 IN COMPLIANCE WITH SEC. 319-202
 OHIO REV. CODE
 SEP 10 2008
 MARK R. STEWART
 LORAIN COUNTY AUDITOR

P.P.N. 04-00-016-101-196
 SCHAFER DEVELOPMENT COMPANY INC.
 INST.# 20070229896

EXPANSION LANDS
 22.9324 ACRES



SURVEYOR'S CERTIFICATION

I DO HEREBY STATE THAT THIS DRAWING ACCURATELY REFLECTS THE LOCATION OF ALL IMPROVEMENTS AND RECORDED EASEMENTS

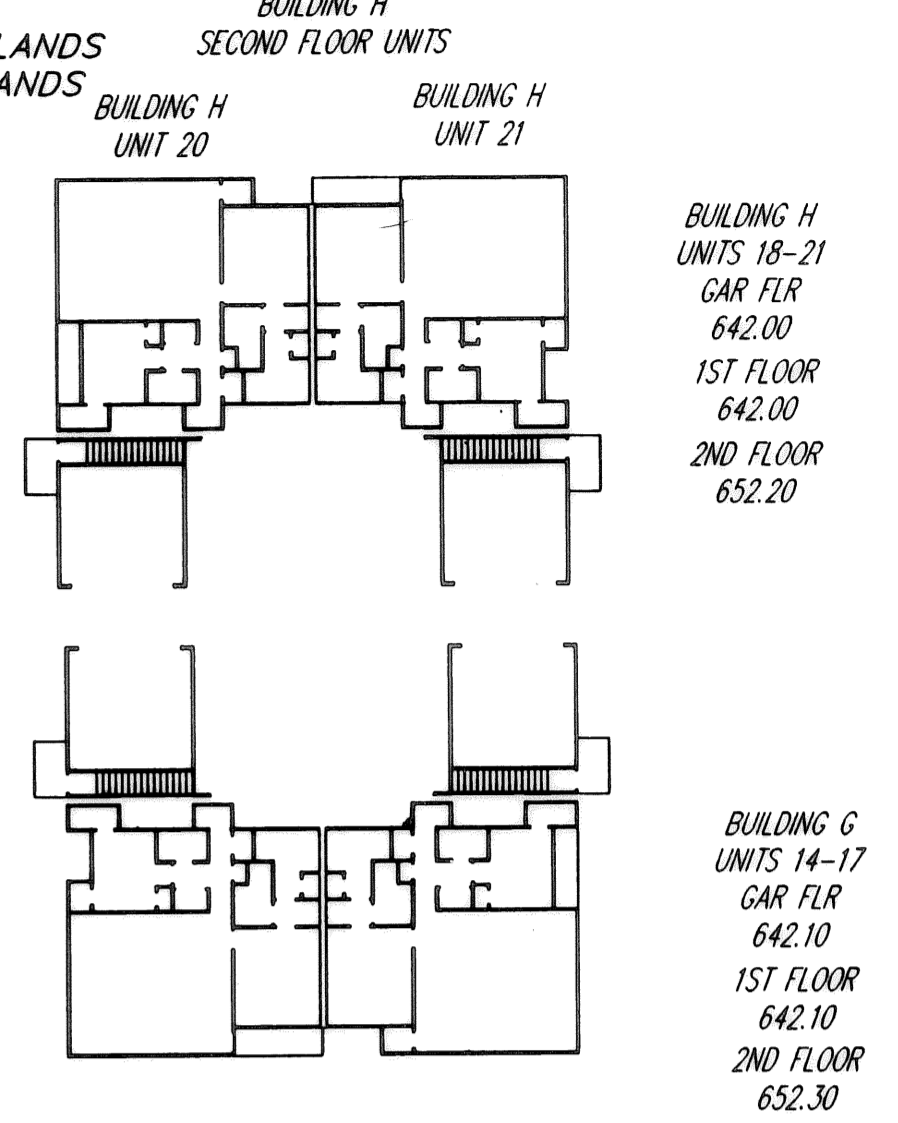
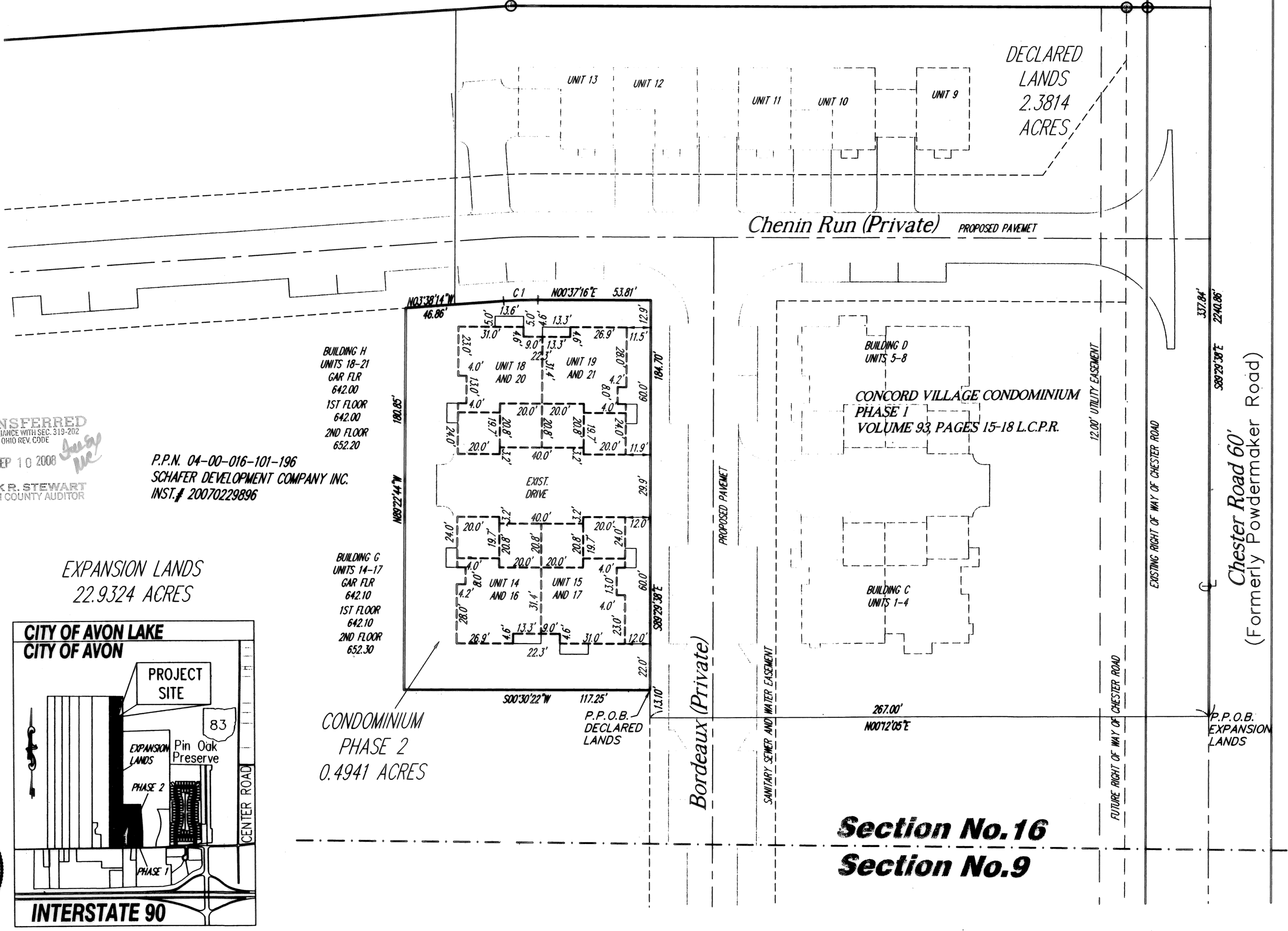
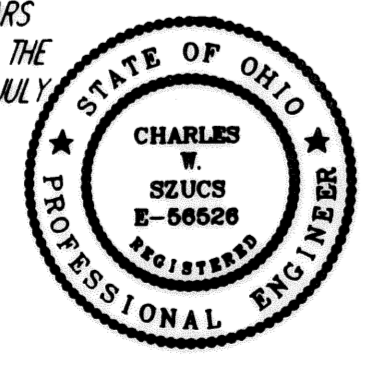
Michael P. Spellacy 8/2/08
 MICHAEL P. SPELLACY, P.S. No. 8169



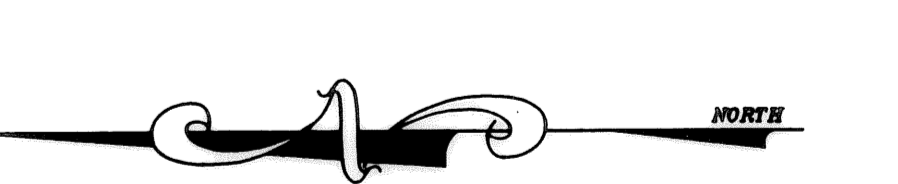
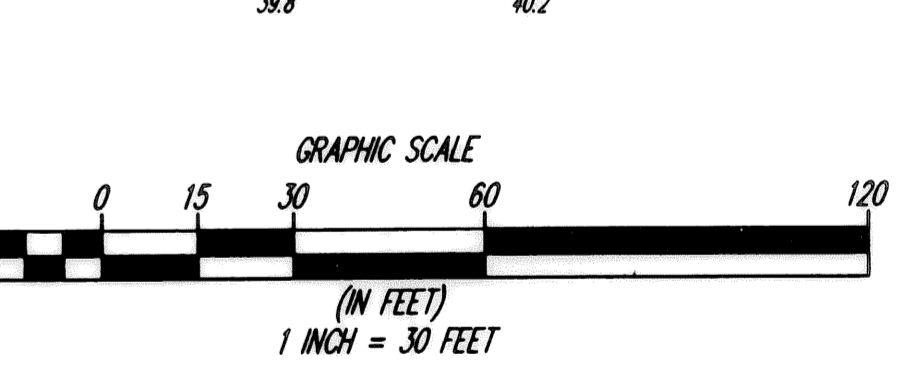
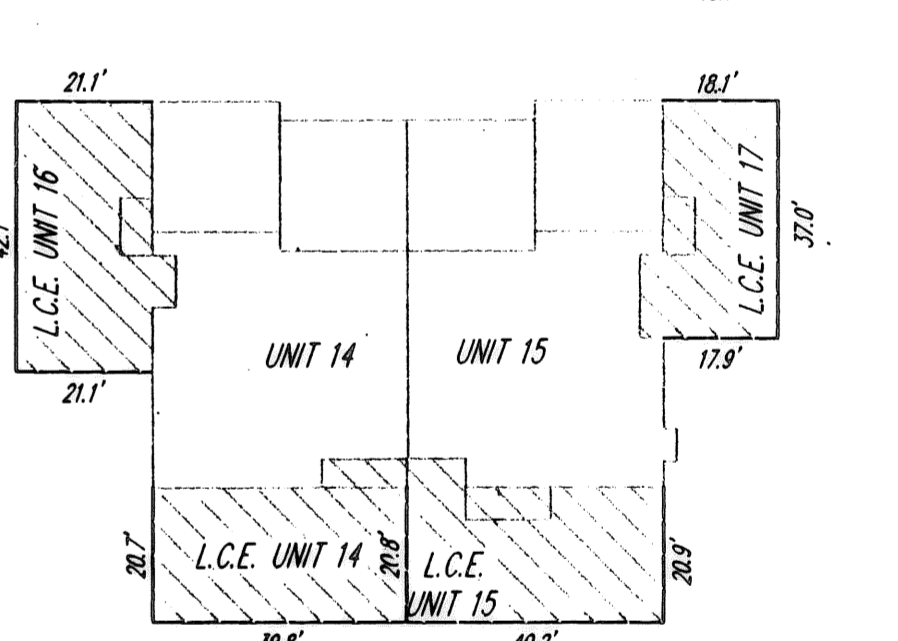
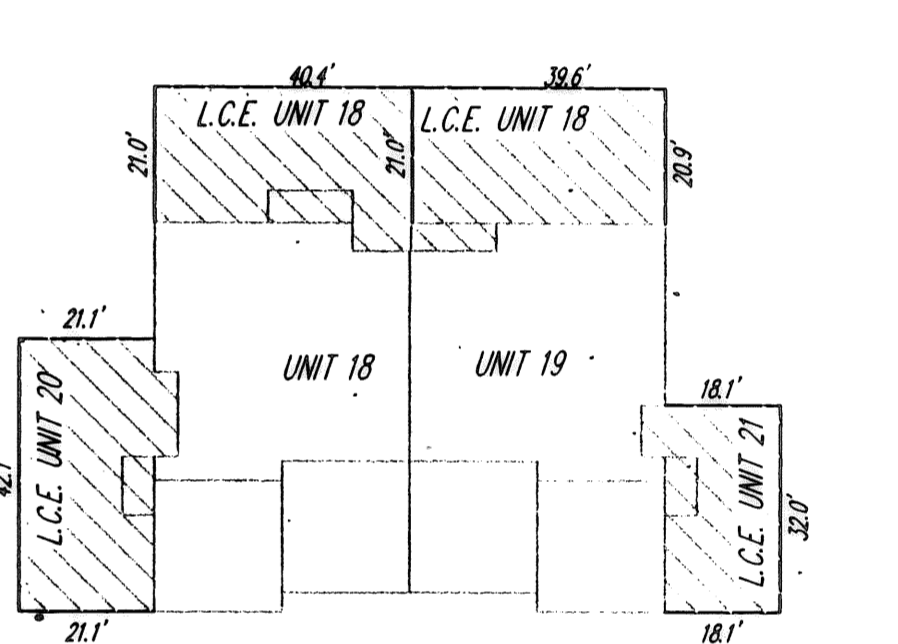
ENGINEER'S CERTIFICATION

I HEREBY STATE THAT THESE DRAWINGS SHOW GRAPHICALLY ALL PARTICULARS OF THE UNITS OF THE CONCORD VILLAGE CONDOMINIUM PHASE 2 INCLUDING THE LAYOUT AND DESIGNATION OF EACH FAMILY UNIT AS CONSTRUCTED AS OF JULY 29, 2008.

Charles W. Szucs 8/2/08
 CHARLES W. SZUCS, P.E. No. 56526



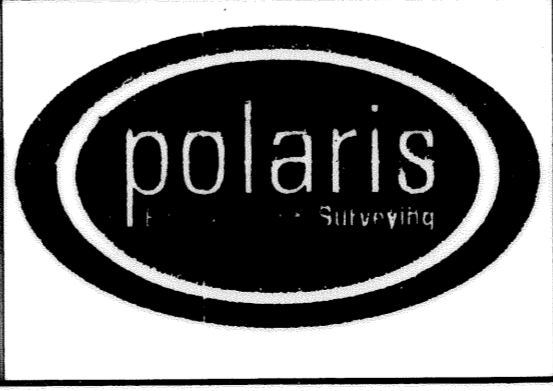
BUILDING H UNITS 18-21
 GAR FLR 642.00
 1ST FLOOR 642.00
 2ND FLOOR 652.20



REV. No.	DATE	BY	CHK'D

DATE: 08-21-08
 SCALE: HOR. 1" = 30'
 VERT. 1" = 0'
 FOLDER: 2004/AVG/PLATS
 FILENAME: CONDOMINIUM.DWG
 TAB: CONDO 2-01
 DRAWN: MES

CONCORD VILLAGE CONDOMINIUM PHASE 2
 PART OF ORIGINAL AVON TOWNSHIP SECTIONS 9 AND 16
 NOW IN THE CITY OF AVON - LORAIN COUNTY - OHIO

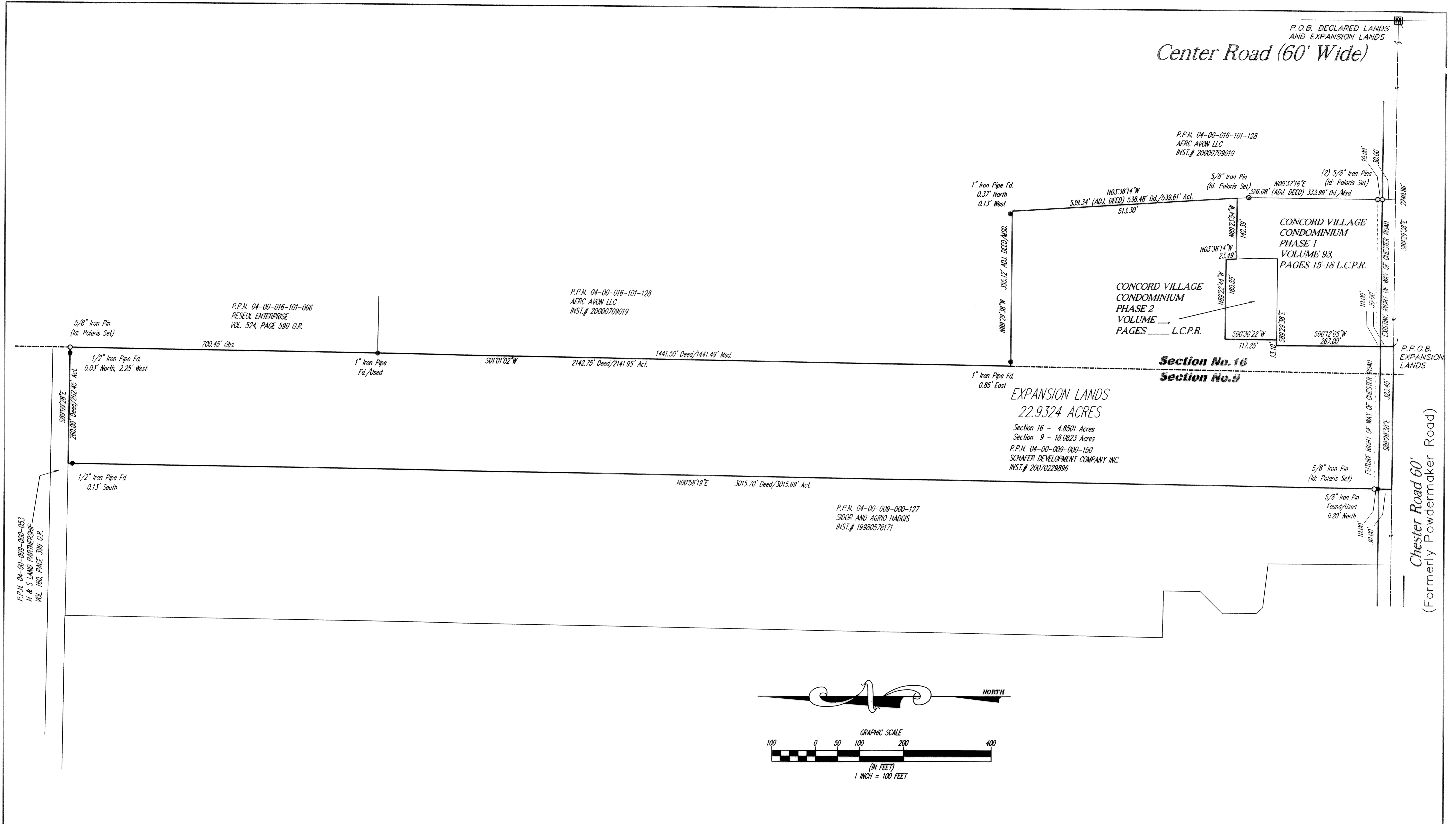


POLARIS ENGINEERING & SURVEYING, INC.
 34600 CHARDON ROAD - SUITE D
 WILLOUGHBY HILLS, OHIO 44094
 (440) 944-4433 (440) 944-3722 (Fax)
 www.polaris-es.com

PHASE 2 DECLARED AREAS

CONTRACT No.	
04-567	
SHEET	OF
1	4

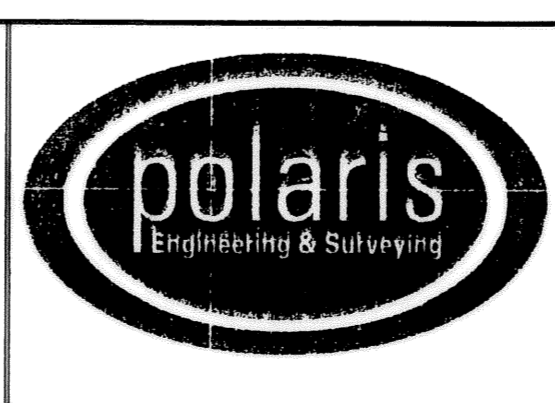
Tax Map Dept. Copy # 08-01153



REV. No.	DATE	BY	CHK'D

DATE: 08-21-08
 SCALE: HOR. 1"=100'
 VERT. 1"=9'
 FOLDER: 2004/DWG/PLATS
 FILENAME: CONDOMINIUM.DWG
 TAB: CONDO-02
 DRAWN: MPS

CONCORD VILLAGE CONDOMINIUM PHASE 2
 PART OF ORIGINAL AVON TOWNSHIP SECTIONS 9 AND 16
 NOW IN THE CITY OF AVON - LORAIN COUNTY - OHIO

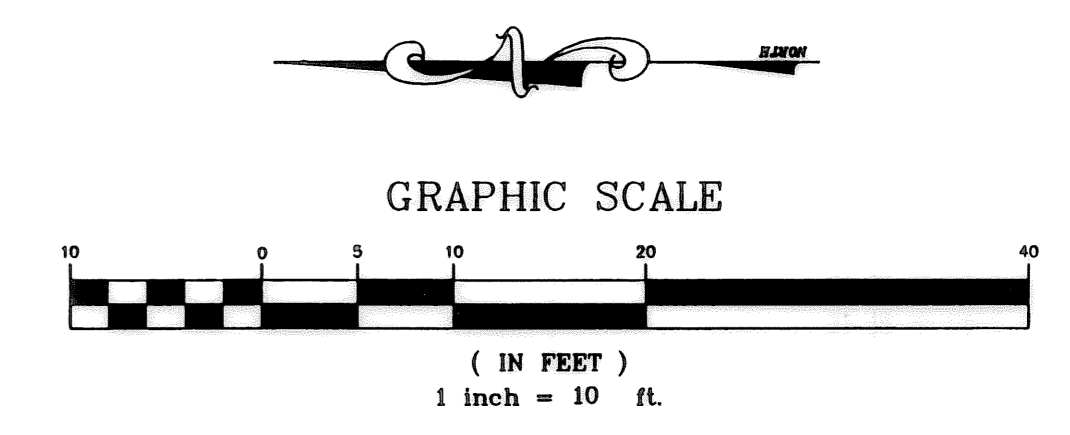
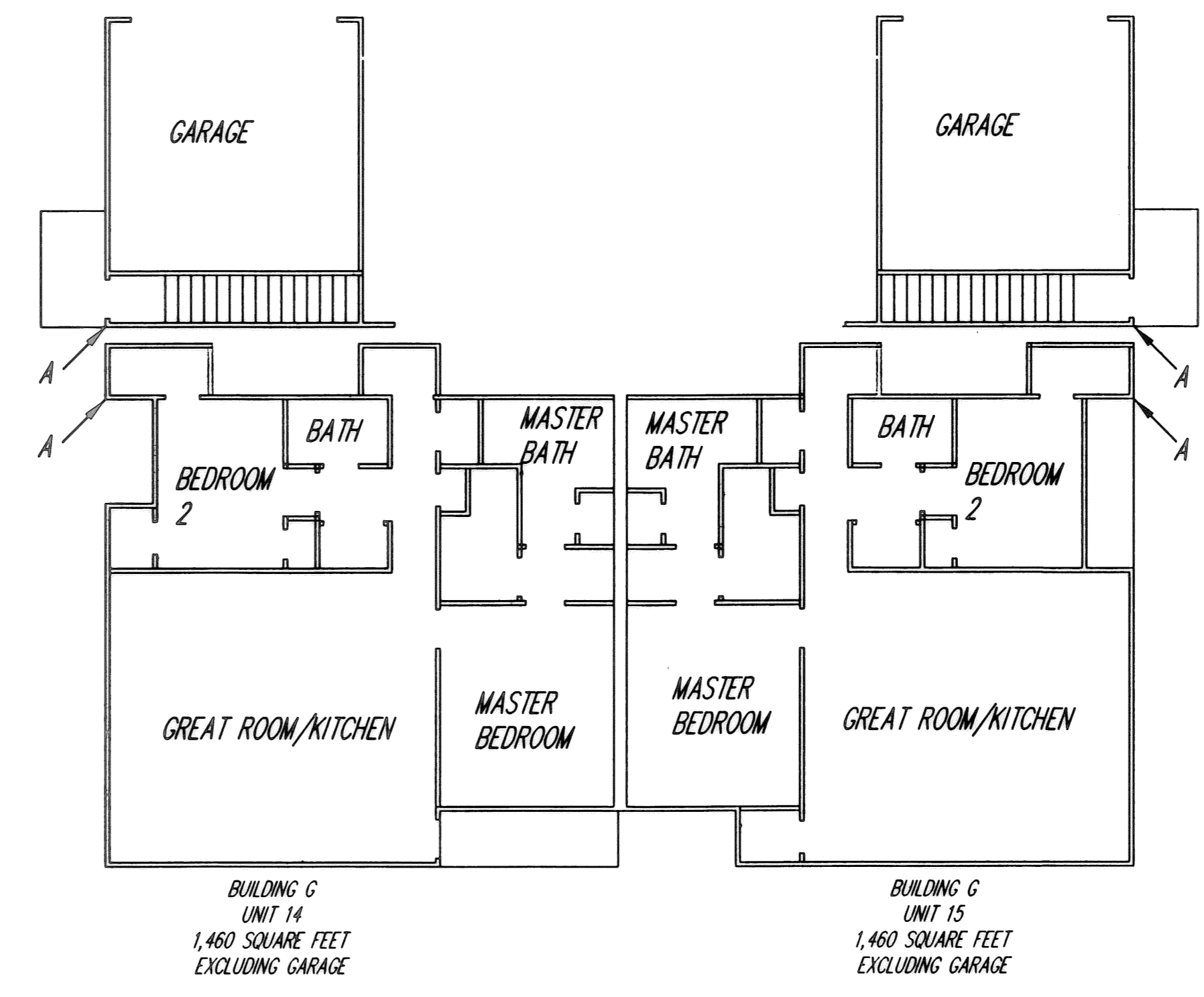
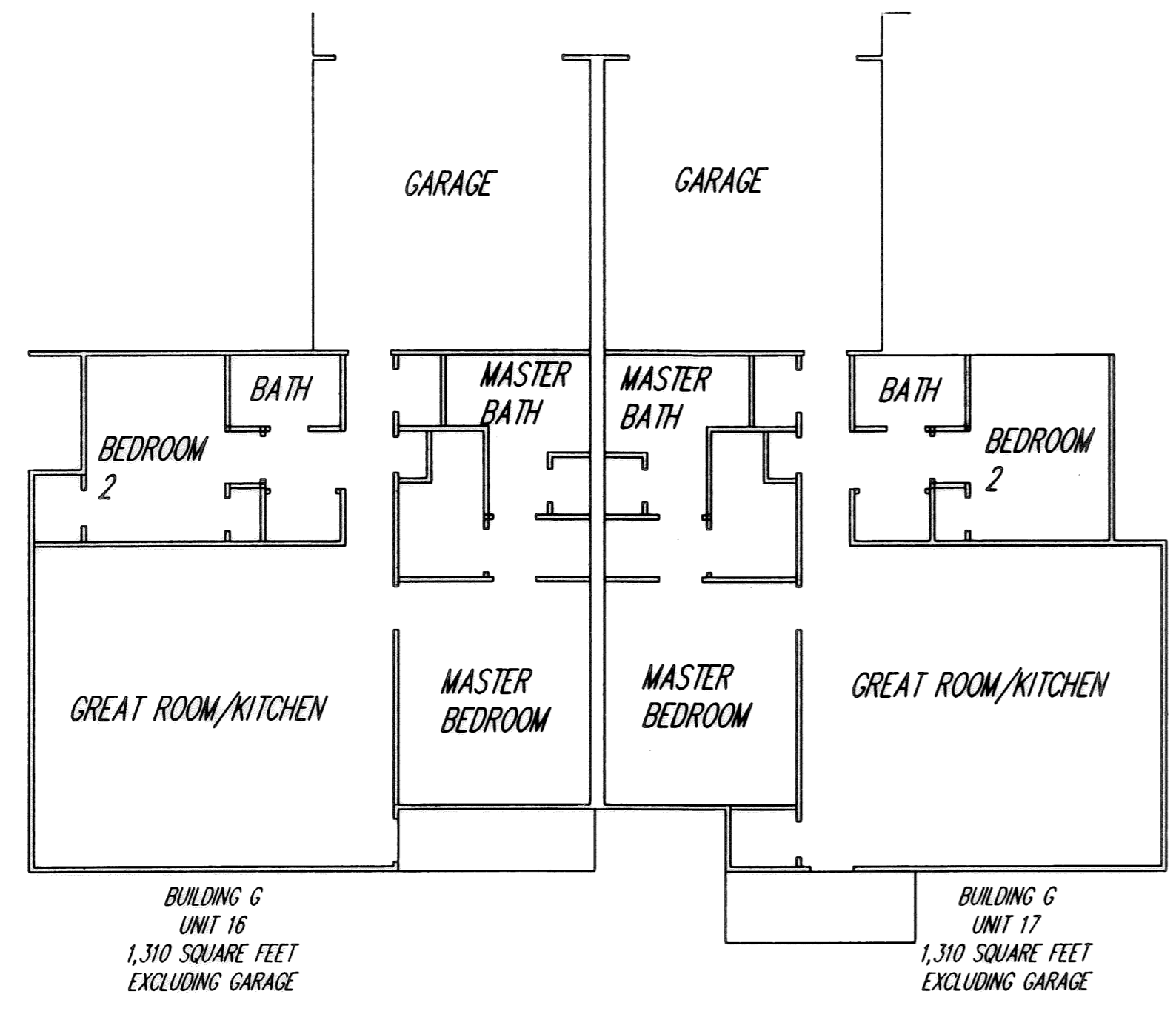
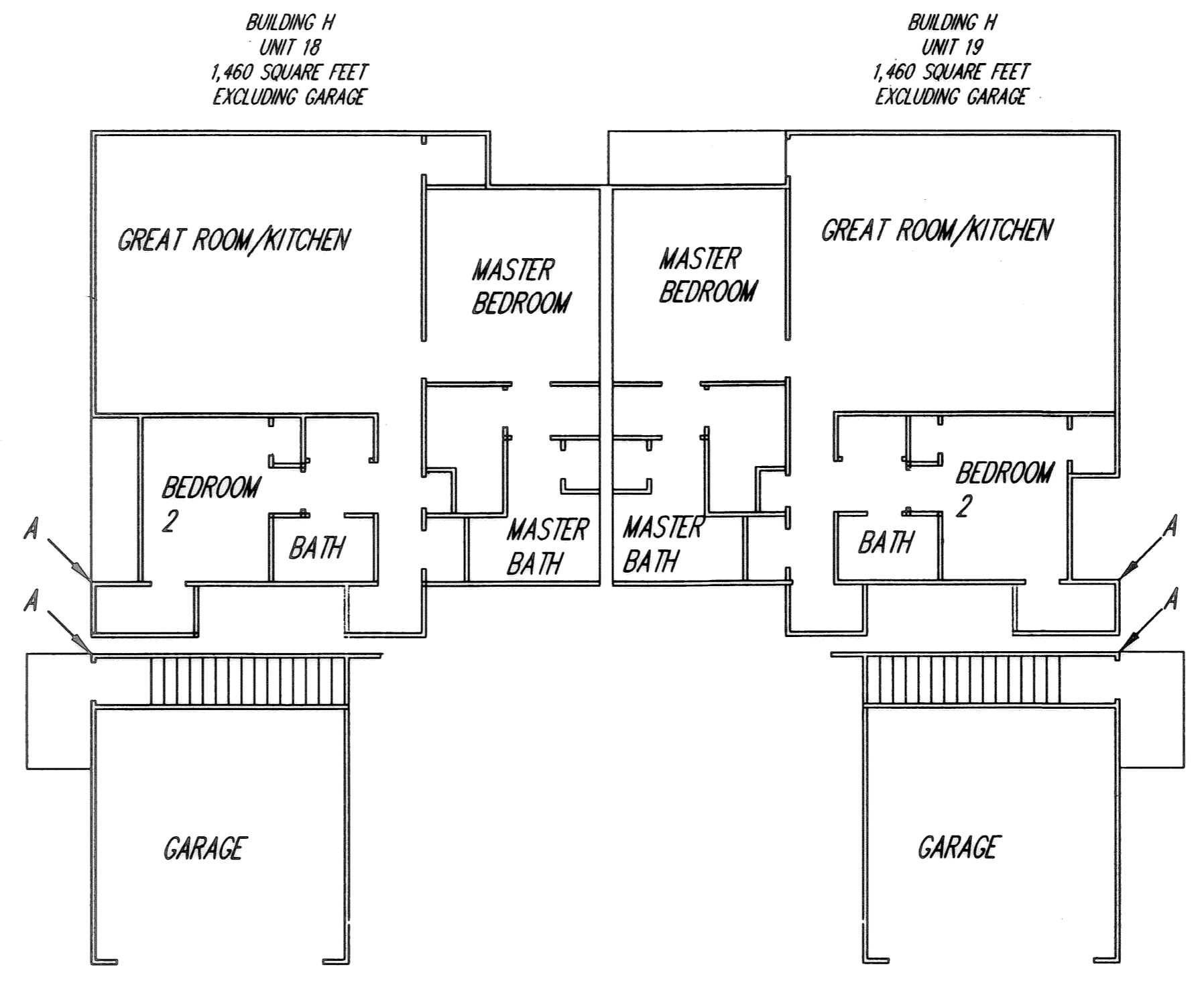
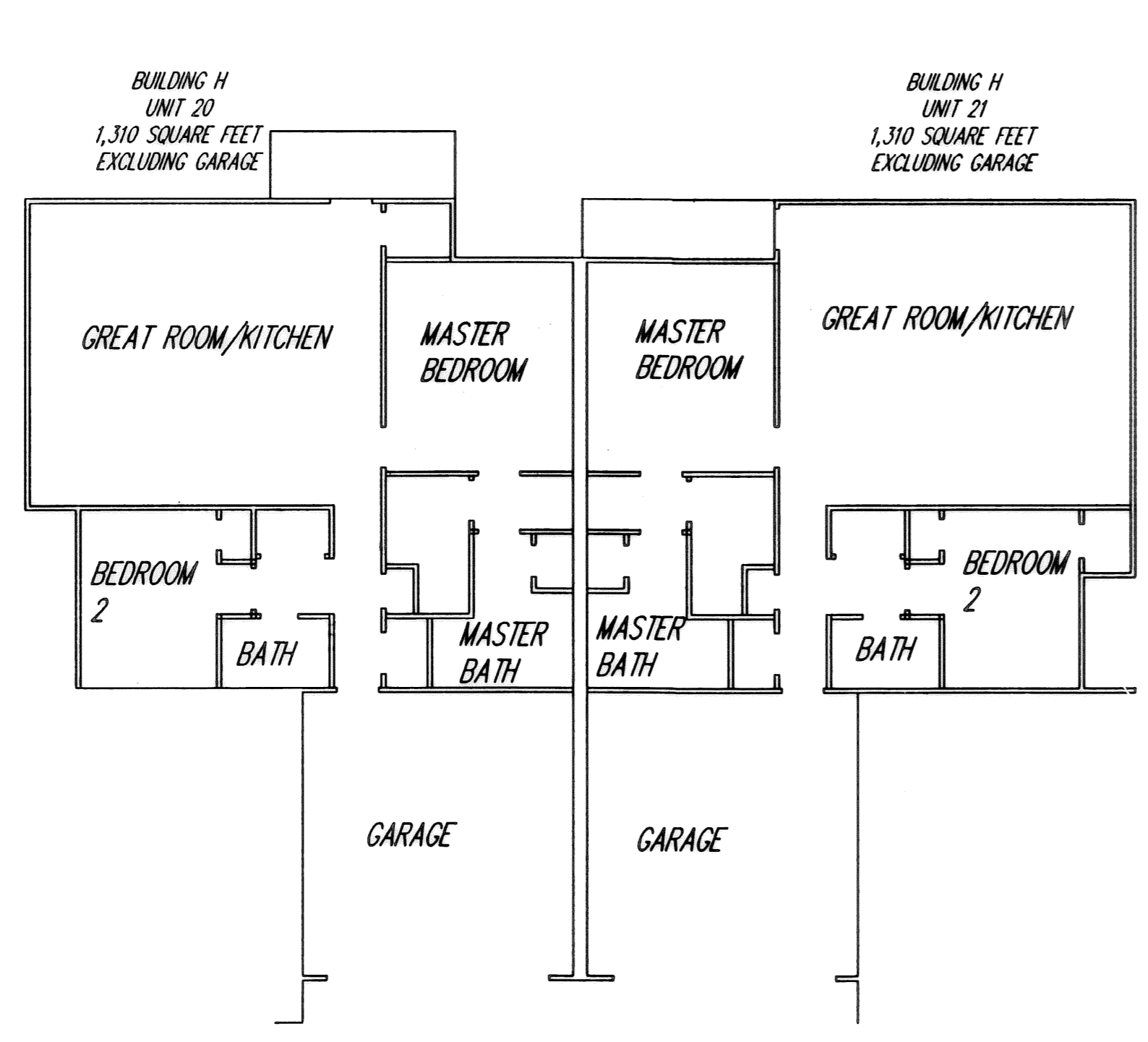


POLARIS ENGINEERING & SURVEYING, INC.
 34600 CHARDON ROAD - SUITE D
 WILLOUGHBY HILLS, OHIO 44094
 (440) 944-4433 (440) 944-3722 (Fax)
 www.polaris-es.com

PHASE 2 EXPANSION LANDS

CONTRACT No.	
04-567	
SHEET	OF
2	4

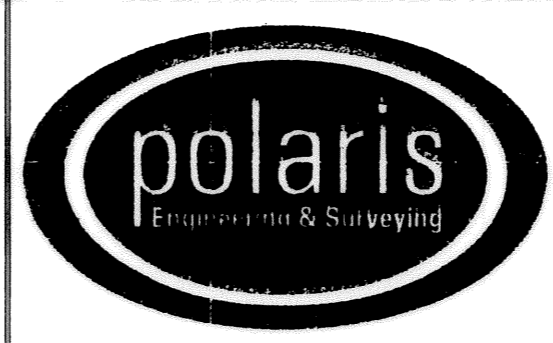
Tax Map Dept Copy # 08-01153



REV. No.	DATE	BY	CHK'D

DATE: 08-21-08
 SCALE: HOR. 1"=10'
 VERT. 1"=0'
 FOLDER: 2004/DWG/PLATS
 FILENAME: CONDOMINIUM.DWG
 TAB: CONDO2 -03
 DRAWN: MPS

CONCORD VILLAGE CONDOMINIUM PHASE 2
 PART OF ORIGINAL AVON TOWNSHIP SECTIONS 9 AND 16
 NOW IN THE CITY OF AVON - LORAIN COUNTY - OHIO



POLARIS ENGINEERING & SURVEYING, INC.
 34600 CHARDON ROAD - SUITE D
 WILLOUGHBY HILLS, OHIO 44094
 (440) 944-4433 (440) 944-3722 (Fax)
 www.polaris-es.com

PHASE 2 FLOOR PLANS

CONTRACT No.	
04-567	
SHEET	OF
3	4

Tax Map Dept Copy #08-01153

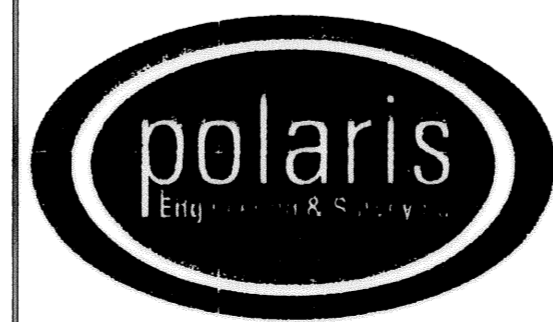


ELEVATIONS UNITS 14-21

REV. No.	DATE	BY	CHK'D

DATE: 11/21/07
 SCALE: HOR. 1/8"=1'-0"
 VERT. 1/8"=1'-0"
 FOLDER: 2004/DWG/PLATS
 FILENAME: CONDOMINIUM.DWG
 TAB: CONDO-2-03
 DRAWN: MPS

CONCORD VILLAGE CONDOMINIUM PHASE 2
 PART OF ORIGINAL AVON TOWNSHIP SECTIONS 9 AND 16
 NOW IN THE CITY OF AVON - LORAIN COUNTY - OHIO



POLARIS ENGINEERING & SURVEYING, INC.
 34600 CHARDON ROAD - SUITE D
 WILLOUGHBY HILLS, OHIO 44094
 (440) 944-4433 (440) 944-3722 (Fax)
 www.polaris-cs.com

PHASE 2 EXTERIOR DETAILS

CONTRACT No.	
04-567	
SHEET	OF
4	4

Tax Map Dept COPY #08-01153