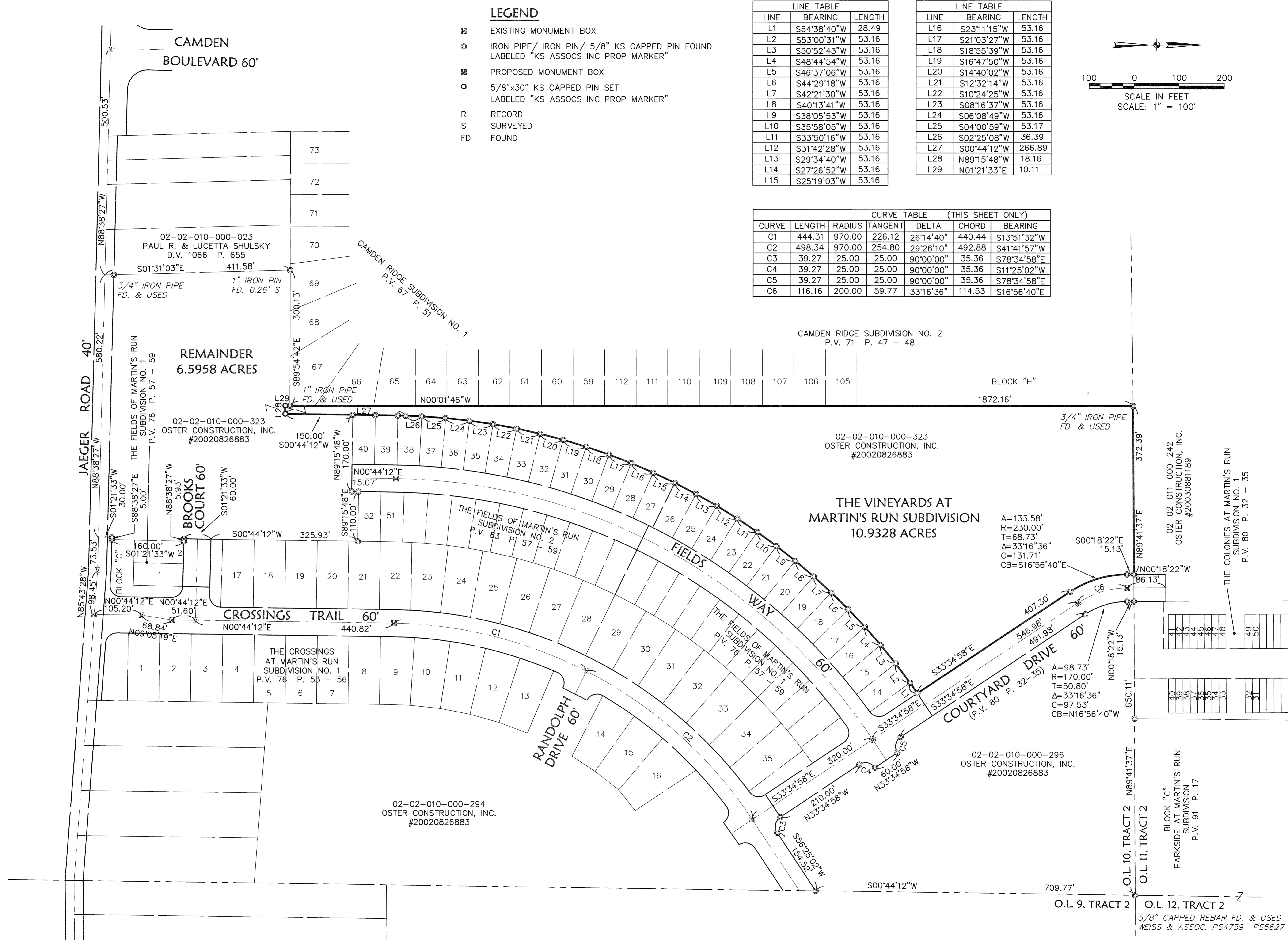


R:\08000\08067\1dat\CONTROL.dwg_08067-PLAT02.dwg 5/19/2008 3:56:38 PM EDT



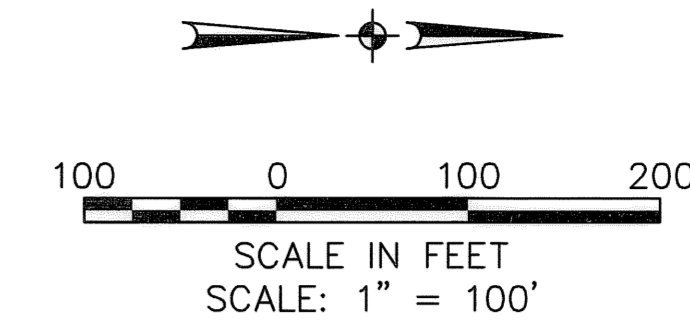
LEGEND

- ⊕ EXISTING MONUMENT BOX
- ⊙ IRON PIPE/ IRON PIN/ 5/8" KS CAPPED PIN FOUND LABELED "KS ASSOCS INC PROP MARKER"
- ⊕ PROPOSED MONUMENT BOX
- 5/8"x30" KS CAPPED PIN SET LABELED "KS ASSOCS INC PROP MARKER"
- R RECORD
- S SURVEYED
- FD FOUND

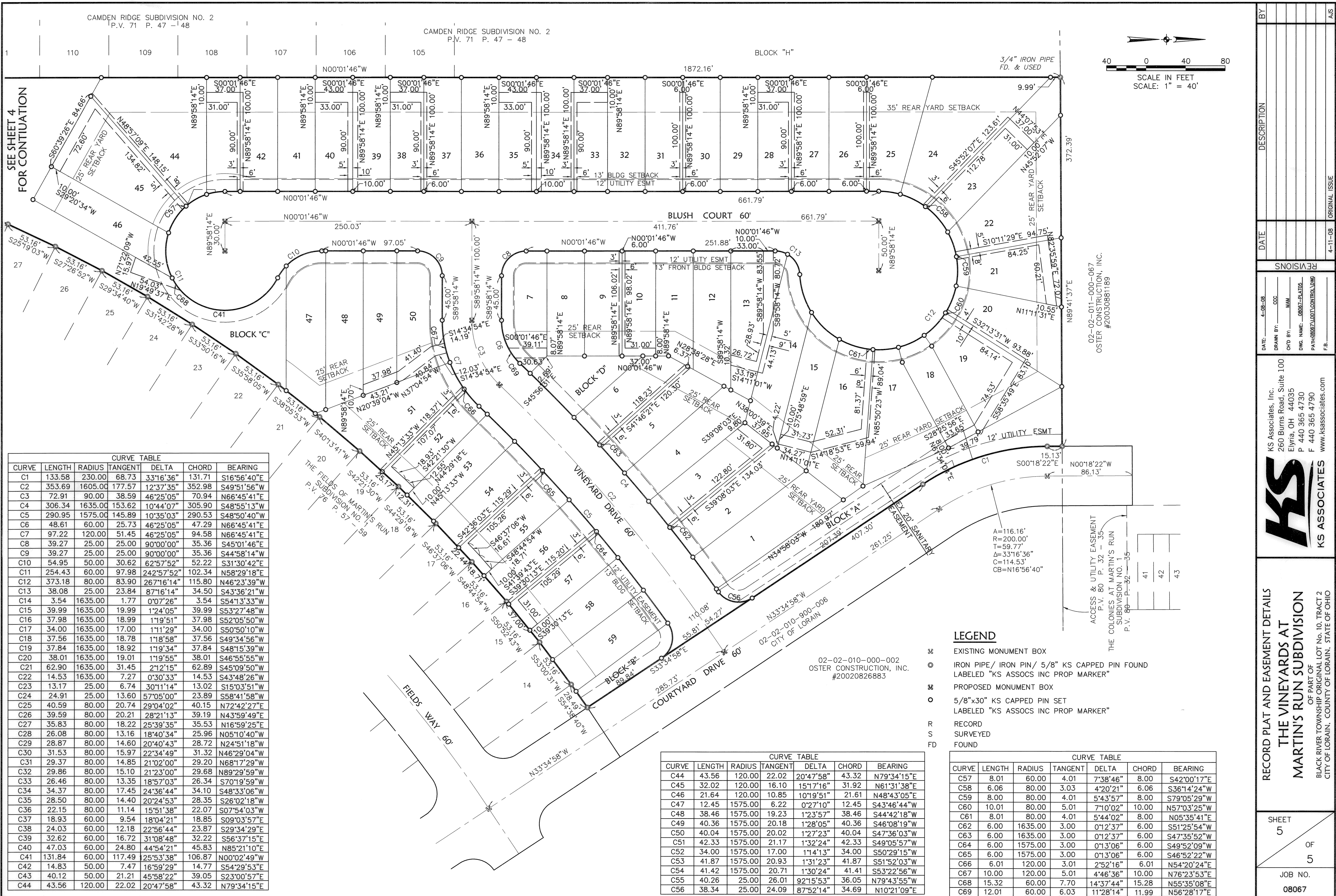
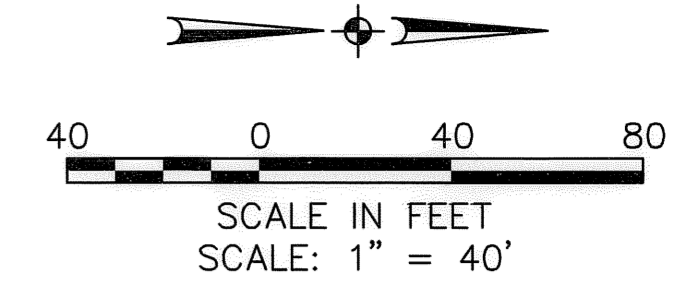
LINE	BEARING	LENGTH
L1	S54°38'40"W	28.49
L2	S53°00'31"W	53.16
L3	S50°52'43"W	53.16
L4	S48°44'54"W	53.16
L5	S46°37'06"W	53.16
L6	S44°29'18"W	53.16
L7	S42°21'30"W	53.16
L8	S40°13'41"W	53.16
L9	S38°05'53"W	53.16
L10	S35°58'05"W	53.16
L11	S33°50'16"W	53.16
L12	S31°42'28"W	53.16
L13	S29°34'40"W	53.16
L14	S27°26'52"W	53.16
L15	S25°19'03"W	53.16

LINE	BEARING	LENGTH
L16	S23°11'15"W	53.16
L17	S21°03'27"W	53.16
L18	S18°55'39"W	53.16
L19	S16°47'50"W	53.16
L20	S14°40'02"W	53.16
L21	S12°32'14"W	53.16
L22	S10°24'25"W	53.16
L23	S08°16'37"W	53.16
L24	S06°08'49"W	53.16
L25	S04°00'59"W	53.17
L26	S02°25'08"W	36.39
L27	S00°44'12"W	266.89
L28	N89°15'48"W	18.16
L29	N01°21'33"E	10.11

CURVE TABLE (THIS SHEET ONLY)						
CURVE	LENGTH	RADIUS	TANGENT	DELTA	CHORD	BEARING
C1	444.31	970.00	226.12	26°14'40"	440.44	S13°51'32"W
C2	498.34	970.00	254.80	29°26'10"	492.88	S41°41'57"W
C3	39.27	25.00	25.00	90°00'00"	35.36	S78°34'58"E
C4	39.27	25.00	25.00	90°00'00"	35.36	S11°25'02"W
C5	39.27	25.00	25.00	90°00'00"	35.36	S78°34'58"E
C6	116.16	200.00	59.77	33°16'36"	114.53	S16°56'40"E



BY: _____ DATE: _____	DESCRIPTION: _____ ORIGINAL ISSUE: _____
REVISIONS: _____	DATE: 4-08-08 DRAWN BY: CCC CDD BY: MAM DWG. NAME: 08067-PLAT02 PATH: 08067\1DAT\CONTROL.DWG F.B.: _____
 KS ASSOCIATES, Inc. 260 Burns Road, Suite 100 Elvira, OH 44035 P 440 365 4730 F 440 365 4790 www.ksassociates.com	
RECORD PLAT THE VINEYARDS AT MARTIN'S RUN SUBDIVISION OF PART OF BLACK RIVER TOWNSHIP ORIGINAL LOT No. 10, TRACT 2 CITY OF LORAIN, COUNTY OF LORAIN, STATE OF OHIO	
SHEET 2 OF 5	JOB NO. 08067



CURVE	LENGTH	RADIUS	TANGENT	DELTA	CHORD	BEARING
C1	133.58	230.00	68.73	33°16'36"	131.71	S16°56'40"E
C2	353.69	1605.00	177.57	12°37'35"	352.98	S49°51'56"W
C3	72.91	90.00	38.59	46°25'05"	70.94	N66°45'41"E
C4	306.34	1635.00	153.62	10°44'07"	305.90	S48°55'13"W
C5	290.95	1575.00	145.89	10°35'03"	290.53	S48°50'40"W
C6	48.61	60.00	25.73	46°25'05"	47.29	N66°45'41"E
C7	97.22	120.00	51.45	46°25'05"	94.58	N66°45'41"E
C8	39.27	25.00	25.00	90°00'00"	35.36	S45°01'46"E
C9	39.27	25.00	25.00	90°00'00"	35.36	S44°58'14"W
C10	54.95	50.00	30.62	62°57'52"	52.22	S31°30'42"E
C11	254.43	60.00	97.98	242°57'52"	102.34	N58°29'18"E
C12	373.18	80.00	83.90	267°16'14"	115.80	N46°23'39"W
C13	38.08	25.00	23.84	87°16'14"	34.50	S43°36'21"W
C14	3.54	1635.00	1.77	0°07'26"	3.54	S54°13'33"W
C15	39.99	1635.00	19.99	1°24'05"	39.99	S53°27'48"W
C16	37.98	1635.00	18.99	1°19'51"	37.98	S52°05'50"W
C17	34.00	1635.00	17.00	1°11'29"	34.00	S50°50'10"W
C18	37.56	1635.00	18.78	1°18'58"	37.56	S49°34'56"W
C19	37.84	1635.00	18.92	1°19'34"	37.84	S48°15'39"W
C20	38.01	1635.00	19.01	1°19'55"	38.01	S46°55'55"W
C21	62.90	1635.00	31.45	2°12'15"	62.89	S45°09'50"W
C22	14.53	1635.00	7.27	0°30'33"	14.53	S43°48'26"W
C23	13.17	25.00	6.74	30°11'14"	13.02	S15°03'51"W
C24	24.91	25.00	13.60	57°05'00"	23.89	S58°41'58"W
C25	40.59	80.00	20.74	29°04'02"	40.15	N72°42'27"E
C26	39.59	80.00	20.21	28°21'13"	39.19	N43°59'49"E
C27	35.83	80.00	18.22	25°39'35"	35.53	N16°59'25"E
C28	26.08	80.00	13.16	18°40'34"	25.96	N05°10'40"W
C29	28.87	80.00	14.60	20°40'43"	28.72	N24°51'18"W
C30	31.53	80.00	15.97	22°34'49"	31.32	N46°29'04"W
C31	29.37	80.00	14.85	21°02'00"	29.20	N68°17'29"W
C32	29.86	80.00	15.10	21°23'00"	29.68	N89°29'59"W
C33	26.46	80.00	13.35	18°57'03"	26.34	S70°19'59"W
C34	34.37	80.00	17.45	24°36'44"	34.10	S48°33'06"W
C35	28.50	80.00	14.40	20°24'53"	28.35	S26°02'18"W
C36	22.15	80.00	11.14	15°51'38"	22.07	S07°54'03"W
C37	18.93	60.00	9.54	18°04'21"	18.85	S09°03'57"E
C38	24.03	60.00	12.18	22°56'44"	23.87	S29°34'29"E
C39	32.62	60.00	16.72	31°08'48"	32.22	S56°37'15"E
C40	47.03	60.00	24.80	44°54'21"	45.83	N85°21'10"E
C41	131.84	60.00	117.49	25°53'38"	106.87	N00°02'49"W
C42	14.83	50.00	7.47	16°59'29"	14.77	S54°29'53"E
C43	40.12	50.00	21.21	45°58'22"	39.05	S23°00'57"E
C44	43.56	120.00	22.02	20°47'58"	43.32	N79°34'15"E

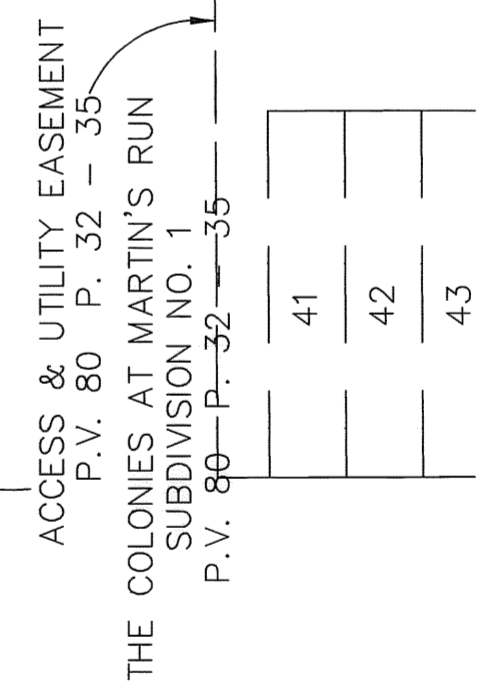
CURVE	LENGTH	RADIUS	TANGENT	DELTA	CHORD	BEARING
C44	43.56	120.00	22.02	20°47'58"	43.32	N79°34'15"E
C45	32.02	120.00	16.10	15°17'16"	31.92	N61°31'38"E
C46	21.64	120.00	10.85	10°19'51"	21.61	N48°43'05"E
C47	12.45	1575.00	6.22	0°27'10"	12.45	S43°46'44"W
C48	38.46	1575.00	19.23	1°23'57"	38.46	S44°42'18"W
C49	40.36	1575.00	20.18	1°28'05"	40.36	S46°08'19"W
C50	40.04	1575.00	20.02	1°27'23"	40.04	S47°36'03"W
C51	42.33	1575.00	21.17	1°32'24"	42.33	S49°05'57"W
C52	34.00	1575.00	17.00	1°14'13"	34.00	S50°29'15"W
C53	41.87	1575.00	20.93	1°31'23"	41.87	S51°52'03"W
C54	41.42	1575.00	20.71	1°30'24"	41.41	S53°22'56"W
C55	40.26	25.00	26.01	92°15'53"	36.05	N79°43'55"W
C56	38.34	25.00	24.09	87°52'14"	34.69	N10°21'09"E

CURVE	LENGTH	RADIUS	TANGENT	DELTA	CHORD	BEARING
C57	8.01	60.00	4.01	7°38'46"	8.00	S42°00'17"E
C58	6.06	80.00	3.03	4°20'21"	6.06	S36°14'24"W
C59	8.00	80.00	4.01	5°43'57"	8.00	S79°05'29"W
C60	10.01	80.00	5.01	7°10'02"	10.00	N57°03'25"W
C61	8.01	80.00	4.01	5°44'02"	8.00	N05°35'41"E
C62	6.00	1635.00	3.00	0°12'37"	6.00	S51°25'54"W
C63	6.00	1635.00	3.00	0°12'37"	6.00	S47°35'52"W
C64	6.00	1575.00	3.00	0°13'06"	6.00	S49°52'09"W
C65	6.00	1575.00	3.00	0°13'06"	6.00	S46°52'22"W
C66	6.01	120.00	3.01	2°52'16"	6.01	N54°20'24"E
C67	10.00	120.00	5.01	4°46'36"	10.00	N76°23'53"E
C68	15.32	60.00	7.70	14°37'44"	15.28	N55°35'08"E
C69	12.01	60.00	6.03	11°28'14"	11.99	N56°28'17"E

LEGEND

- ☒ EXISTING MONUMENT BOX
- ⊙ IRON PIPE/ IRON PIN/ 5/8" KS CAPPED PIN FOUND
LABELED "KS ASSOCS INC PROP MARKER"
- ☒ PROPOSED MONUMENT BOX
- 5/8"x30" KS CAPPED PIN SET
LABELED "KS ASSOCS INC PROP MARKER"
- R RECORD
- S SURVEYED
- FD FOUND

02-02-010-000-002
OSTER CONSTRUCTION, INC.
#20020826883



RECORD PLAT AND EASEMENT DETAILS
THE VINEYARDS AT MARTIN'S RUN SUBDIVISION
BLACK RIVER TOWNSHIP ORIGINAL LOT NO. 10, TRACT 2
CITY OF LORAIN, COUNTY OF LORAIN, STATE OF OHIO

DATE: 4-08-08
DRAWN BY: MAM
CHKD BY: MAM
DWG. NAME: 08067-PLATS
PATH: 08067\CONTROL\DWG
F.B.:

KS Associates, Inc.
260 Burns Road, Suite 100
Elvira, OH 44035
P 440 365 4790
F 440 365 4790
www.ksassociates.com

KS ASSOCIATES

REVISIONS

DATE	DESCRIPTION
4-11-08	ORIGINAL ISSUE

BY: _____

02-02-011-000-067
OSTER CONSTRUCTION, INC.
#20030881189

SHEET 5 OF 5
JOB NO. 08067