

ROW DATA & LOTLINE DATA

NUMBER	DIRECTION	DISTANCE
L3	S 33°46'23" E	89.61'
L5	S 89°53'49" E	9.99'
L6	S 00°28'57" W	259.62'
L7	N 89°53'49" W	36.44'
L8	S 56°13'37" W	32.49'
L9	S 56°13'37" W	14.64'
L10	N 89°53'49" W	49.48'
L11	N 89°53'49" W	80.50'
L12	N 89°53'49" W	80.50'
L13	N 89°53'49" W	80.50'
L14	N 89°53'49" W	81.00'
L15	N 89°53'49" W	81.00'
L16	N 89°53'49" W	81.00'
L17	S 89°53'49" E	51.99'
L18	S 89°53'49" E	96.00'
L19	S 89°53'49" E	96.00'
L20	S 89°53'49" E	96.00'
L21	S 89°53'49" E	96.00'
L22	S 89°53'49" E	96.00'
L23	S 89°53'49" E	1.99'
L24	N 56°13'37" E	27.75'
L25	N 56°13'37" E	46.46'

ROW DATA & LOTLINE DATA

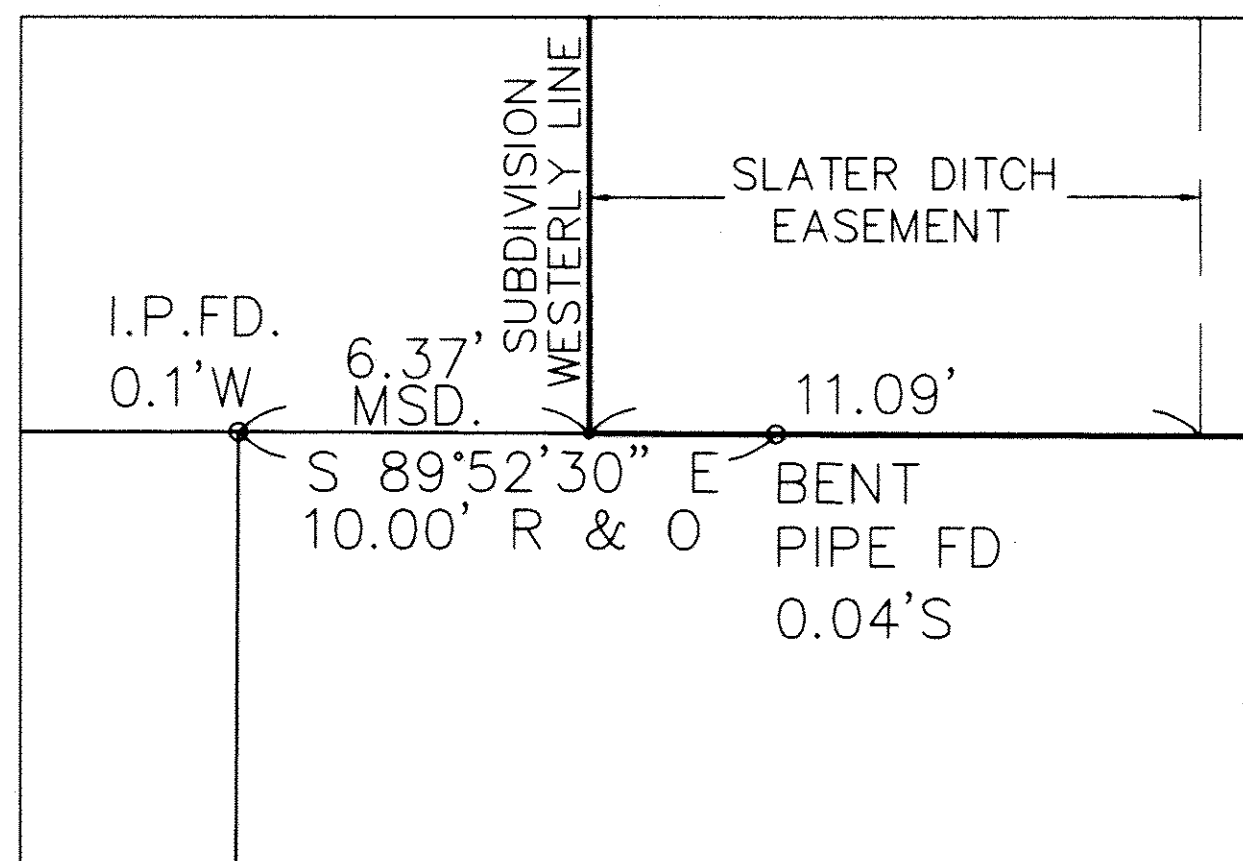
NUMBER	DIRECTION	DISTANCE
L26	N 71°32'51" W	29.49'
L27	N 89°06'00" W	69.68'
L28	N 89°06'00" W	96.50'
L29	N 89°06'00" W	96.00'
L30	N 89°06'00" W	96.00'
L31	N 89°06'00" W	96.00'
L32	N 89°06'00" W	96.00'
L33	N 89°06'00" W	95.00'
L34	N 89°06'00" W	4.68'
L35	S 89°06'00" E	90.26'
L36	S 89°06'00" E	82.00'
L37	S 89°06'00" E	82.00'
L38	S 89°06'00" E	82.00'
L39	S 89°06'00" E	82.00'
L40	S 89°06'00" E	82.00'
L41	S 89°06'00" E	82.00'
L42	S 89°06'00" E	68.64'
L43	S 71°32'51" E	29.49'
L44	S 89°53'49" E	25.85'
L45	S 00°28'57" W	124.60'
L46	S 00°28'57" W	90.00'

CENTERLINE DATA

NUMBER	DELTA ANGLE	CHORD DIRECTION	TANGENT	RADIUS	ARC LENGTH	CHORD LENGTH
C1	14°22'59"	S 82°54'41" W	36.59'	290.00'	72.80'	72.61'
C2	19°29'35"	S 65°58'24" W	49.81'	290.00'	98.66'	98.19'
C3	33°52'34"	N 73°09'54" E	88.32'	290.00'	171.46'	168.98'
C4	11°09'11"	S 84°31'35" W	48.82'	500.00'	97.33'	97.17'
C5	50°30'35"	N 46°17'33" W	136.80'	290.00'	255.65'	247.45'
C6	17°33'09"	N 80°19'25" W	44.77'	290.00'	88.84'	88.49'

ROW DATA

NUMBER	DELTA ANGLE	CHORD DIRECTION	TANGENT	RADIUS	ARC LENGTH	CHORD LENGTH
C7	90°22'46"	N 44°42'26" W	30.20'	30.00'	47.32'	42.57'
C8	21°34'16"	S 79°19'03" W	55.24'	290.00'	109.18'	108.54'
C9	12°18'18"	S 62°22'46" W	31.26'	290.00'	62.28'	62.16'
C10	13°40'16"	N 63°03'45" E	38.36'	320.00'	76.35'	76.17'
C11	14°43'54"	N 77°15'50" E	41.37'	320.00'	82.28'	82.05'
C12	05°28'24"	N 87°21'59" E	15.30'	320.00'	30.57'	30.56'
C13	11°51'42"	S 84°10'20" W	48.83'	470.00'	97.30'	97.13'
C14	05°45'47"	N 82°27'31" E	26.68'	530.00'	53.31'	53.29'
C15	04°45'47"	S 87°43'17" W	22.04'	530.00'	44.06'	44.05'
C16	33°52'34"	N 73°09'54" E	79.18'	260.00'	153.72'	151.50'
C17	07°10'15"	S 59°48'44" W	20.05'	320.00'	40.05'	40.02'
C18	99°39'05"	N 13°34'19" E	35.53'	30.00'	52.18'	45.85'
C19	21°47'59"	N 47°09'12" W	50.07'	260.00'	98.92'	98.33'
C20	13°29'39"	N 64°48'01" W	30.76'	260.00'	61.23'	61.09'
C21	11°24'35"	N 77°15'08" W	25.97'	260.00'	51.78'	51.69'
C22	06°08'34"	N 86°01'43" W	13.95'	260.00'	27.88'	27.86'
C23	02°23'33"	N 87°54'13" W	6.68'	320.00'	13.36'	13.36'
C24	13°05'28"	N 80°09'43" W	36.72'	320.00'	73.11'	72.96'
C25	02°04'08"	N 72°34'55" W	5.78'	320.00'	11.56'	11.55'
C26	06°08'26"	N 68°28'38" W	17.16'	320.00'	34.30'	34.28'
C27	34°33'09"	N 48°07'50" W	99.52'	320.00'	192.98'	190.07'
C28	67°41'39"	S 64°42'05" E	20.12'	30.00'	35.44'	33.42'
C29	08°39'05"	S 85°46'38" W	21.94'	290.00'	43.79'	43.75'
C30	89°37'14"	N 45°17'34" E	29.80'	30.00'	46.93'	42.29'
C31	01°26'32"	S 78°57'45" W	5.92'	470.00'	11.83'	11.83'



CENTERLINE DATA

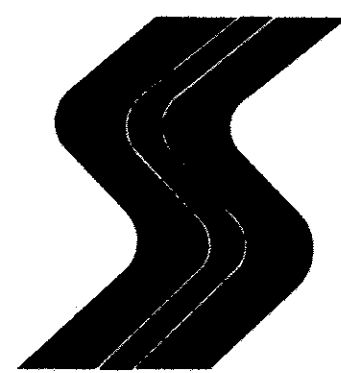
NUMBER	DIRECTION	DISTANCE
L1	S 89°53'49" E	101.14'
L2	N 56°13'37" E	74.21'
L4	N 71°32'51" W	29.49'

NOTE: BLOCKS A, B, C, D & E AND ALL DETENTION PONDS CONTAINED THEREIN WILL BE MAINTAINED BY THE HOMEOWNERS ASSOCIATION. HOWEVER, THE CITY OF NORTH RIDGEVILLE SHALL HAVE ACCESS RIGHTS OVER AND THROUGH THESE BLOCKS FOR MAINTENANCE OF STORM SEWERS.

BENDER JOHN E. & JANICE M. TRUSTEE
P.P. # 07-00-029-000-062
INST. # 20030891350

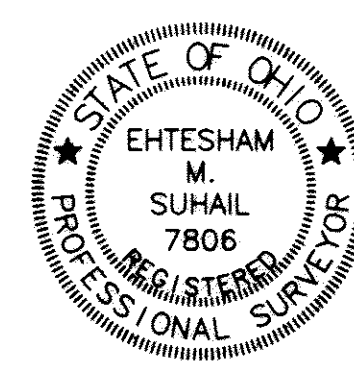
BENDER JOHN E. & JANICE M. TRUSTEE
P.P. # 07-00-029-000-067
INST. # 20030891350

NO.	DATE	BY	REVISIONS	REFERENCE DRAWINGS



Suhail & Suhail Inc.

Consulting Engineers & Surveyors
18405 May Court
Chagrin Falls, Ohio 44023
(440) 708-1330 Fax: (440) 708-1348



DR. BY **MAK**
CHK. BY **MA**
APPR. BY **EMS**
DATE **MAR. 26, 2008**
SCALE **1"=50'**

HAMPTON PLACE SUBDIVISION NO. 1
SITUATED IN THE CITY OF NORTH RIDGEVILLE, COUNTY OF LORAIN AND STATE OF OHIO AND BEING PART OF ORIGINAL LOT 29

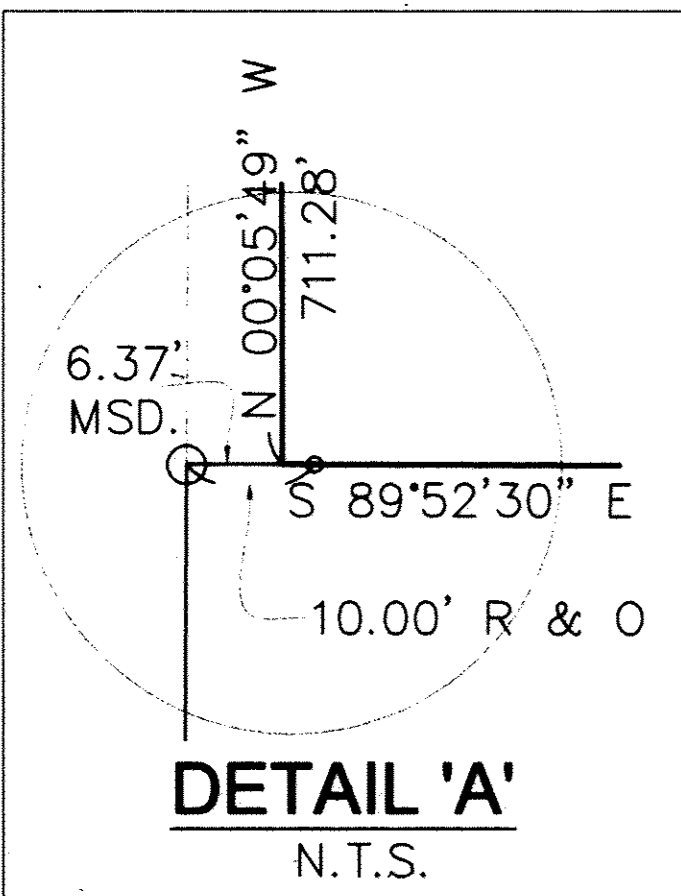
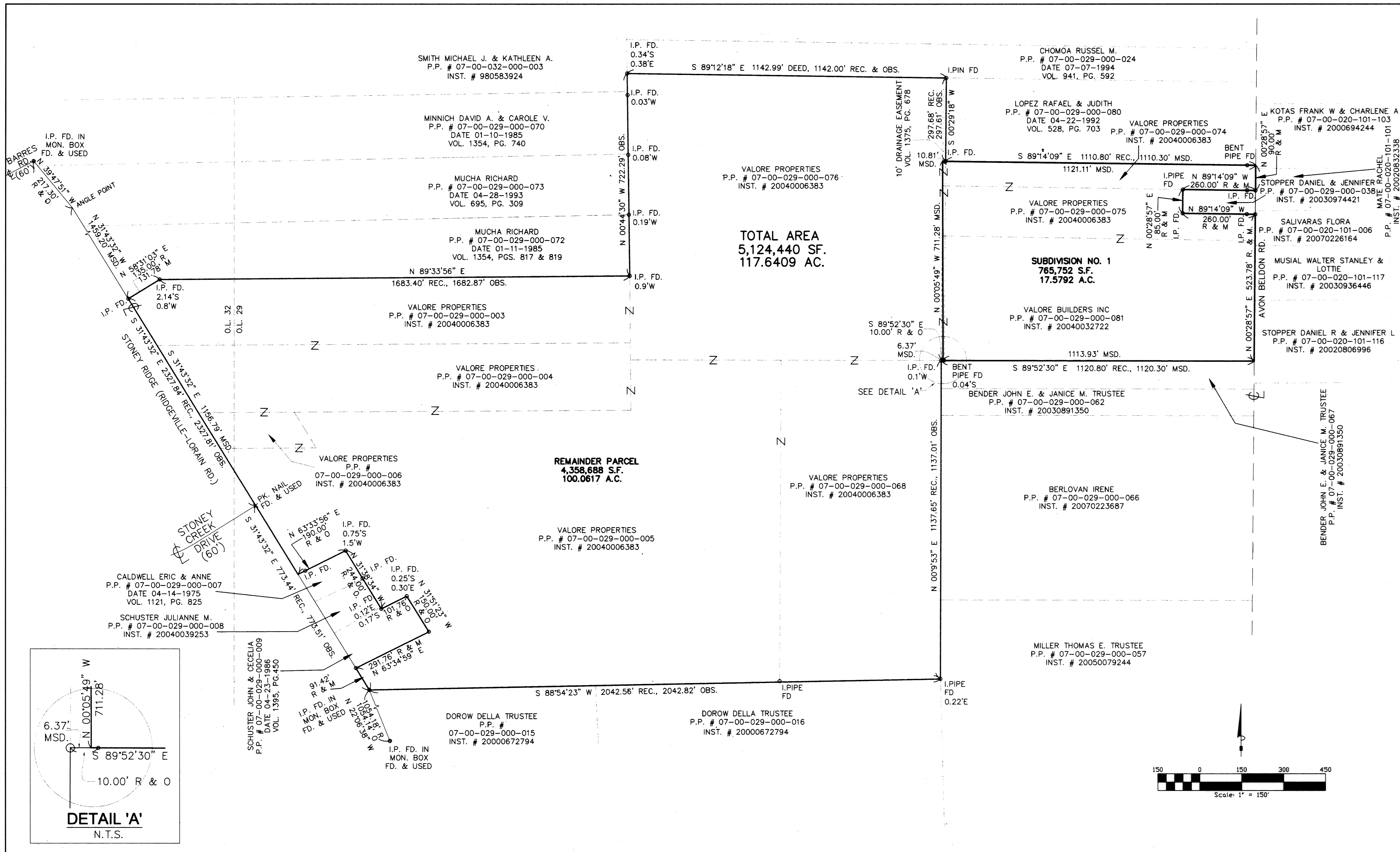
SUBDIVISION PLAT

PREPARED FOR
VALORE PROPERTIES, INC.
29550 Center Ridge Road
WESTLAKE, OH 44145

S&S JOB NO. **06149**
SHEET NO. **2 OF 3**

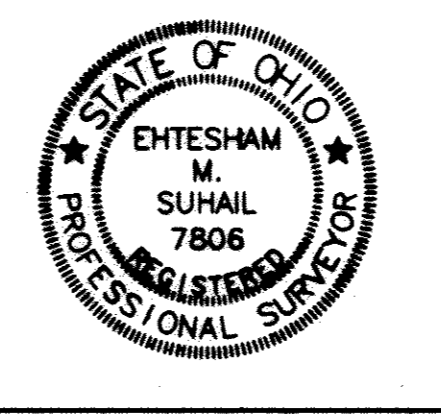
Tax Map Dept Copy # 08-01138

93/64



NO.	DATE	REVISIONS	BY	REFERENCE DRAWINGS

Suhail & Suhail Inc.
 Consulting Engineers & Surveyors
 18405 May Court
 Chagrin Falls, Ohio 44023
 (440) 708-1330 Fax: (440) 708-1348



DR. BY AJ
 CHK. BY MAK
 RE-CHK. BY MA
 APPR. BY EMS
 DATE MAR. 26, 2008
 SCALE 1"=150'

**HAMPTON PLACE
 SUBDIVISION NO. 1**
 SITUATED IN THE CITY OF NORTH RIDGEVILLE, COUNTY OF LORAIN
 AND STATE OF OHIO AND BEING PART OF ORIGINAL LOT 29

BOUNDARY PLAT

PREPARED FOR
VALORE PROPERTIES INC.
 23550 Center Ridge Road
 WESTLAKE, OH 44145

S&S JOB NO. **06149** SHEET NO. **3 OF 3**