

EXHIBIT B
DRAWINGS FOR OF CONDOMINIUM
CONCORD VILLAGE CONDOMINIUM PHASE 1
BEING A PART OF LAND CONVEYED TO SCHAFFER DEVELOPMENT COMPANY INC.,
BY DEED RECORDED IN IN INSTRUMENTS NO.20050087914, 2006163725,
2006163727,
2006163729, 2006163731, AND 2006163733 OF LORAIN COUNTY RECORDS
IN ORIGINAL AVON TOWNSHIP SECTION 9 AND 16
NOW IN THE CITY OF AVON - LORAIN COUNTY - STATE OF OHIO
NOVEMBER 8, 2007 SCALE 1 INCH = 30 FEET

GRANTOR: SCHAFFER DEVELOPMENT COMPANY INC.

TRANSFERRED
IN COMPLIANCE WITH SEC. 319-022
OHIO REV. CODE

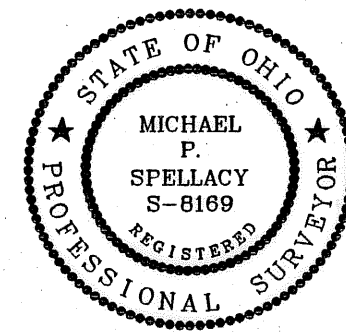
NOV 30 2007

MARK R. STEWART
LORAIN COUNTY AUDITOR

SURVEYOR'S CERTIFICATION

I DO HEREBY STATE THAT THIS DRAWING ACCURATELY REFLECTS THE
LOCATION OF ALL IMPROVEMENTS AND RECORDED EASEMENTS

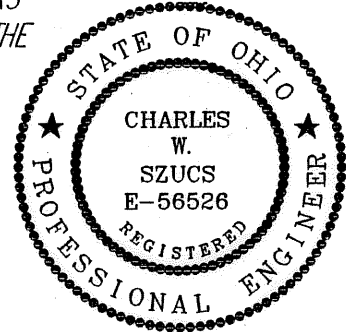
Michael P. Spellacy 11/21/07
MICHAEL P. SPELLACY, P.S. No. 8169



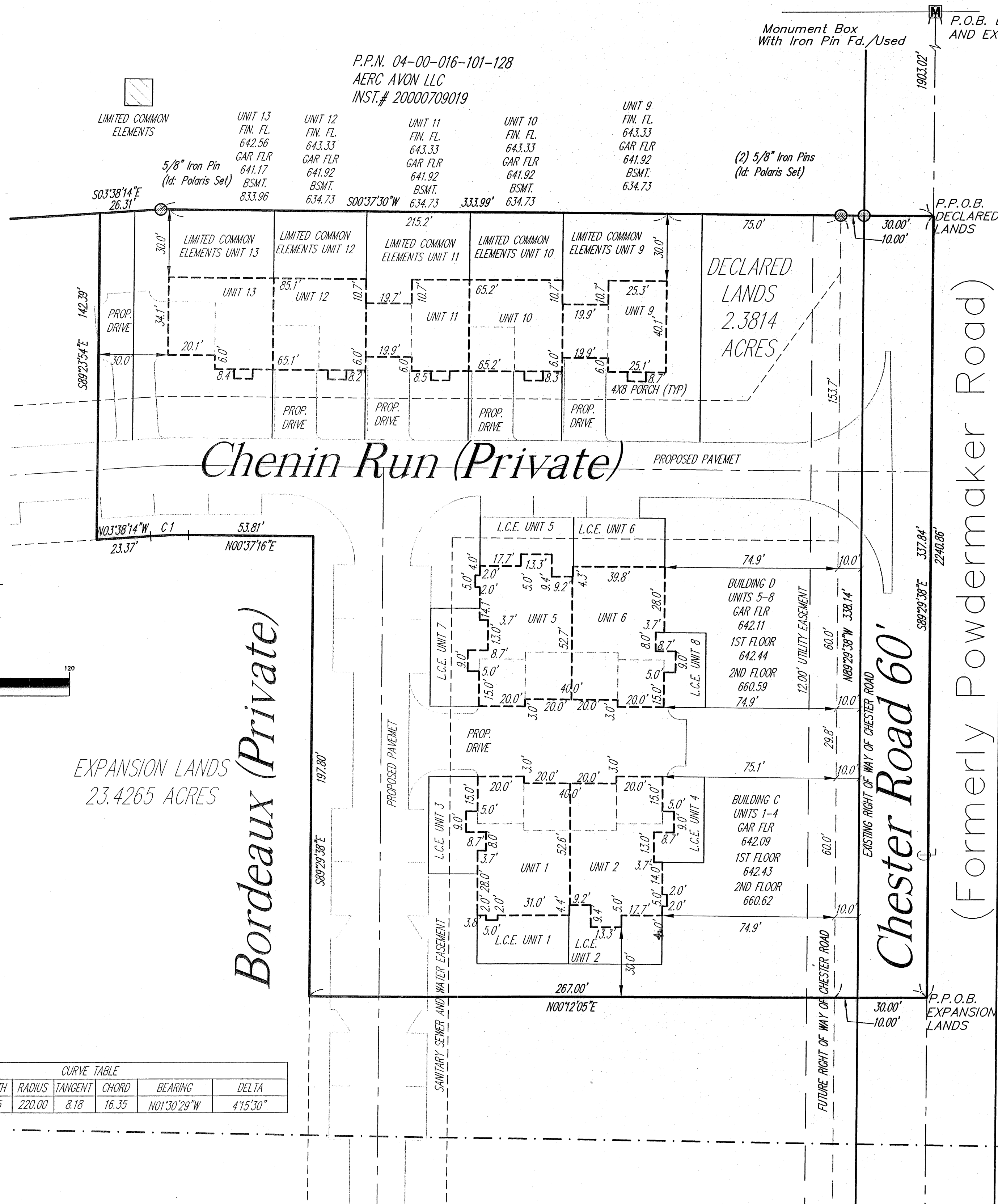
ENGINEER'S CERTIFICATION

I HEREBY STATE THAT THESE DRAWINGS SHOW GRAPHICALLY ALL PARTICULARS
OF THE UNITS OF THE CONCORD VILLAGE CONDOMINIUM PHASE 1 INCLUDING THE
LAYOUT AND DESIGNATION OF EACH FAMILY UNIT AS CONSTRUCTED AS OF
NOVEMBER 6, 2007.

Charles W. Szucs 11-21-07
CHARLES W. SZUCS, P.E. No. 56526

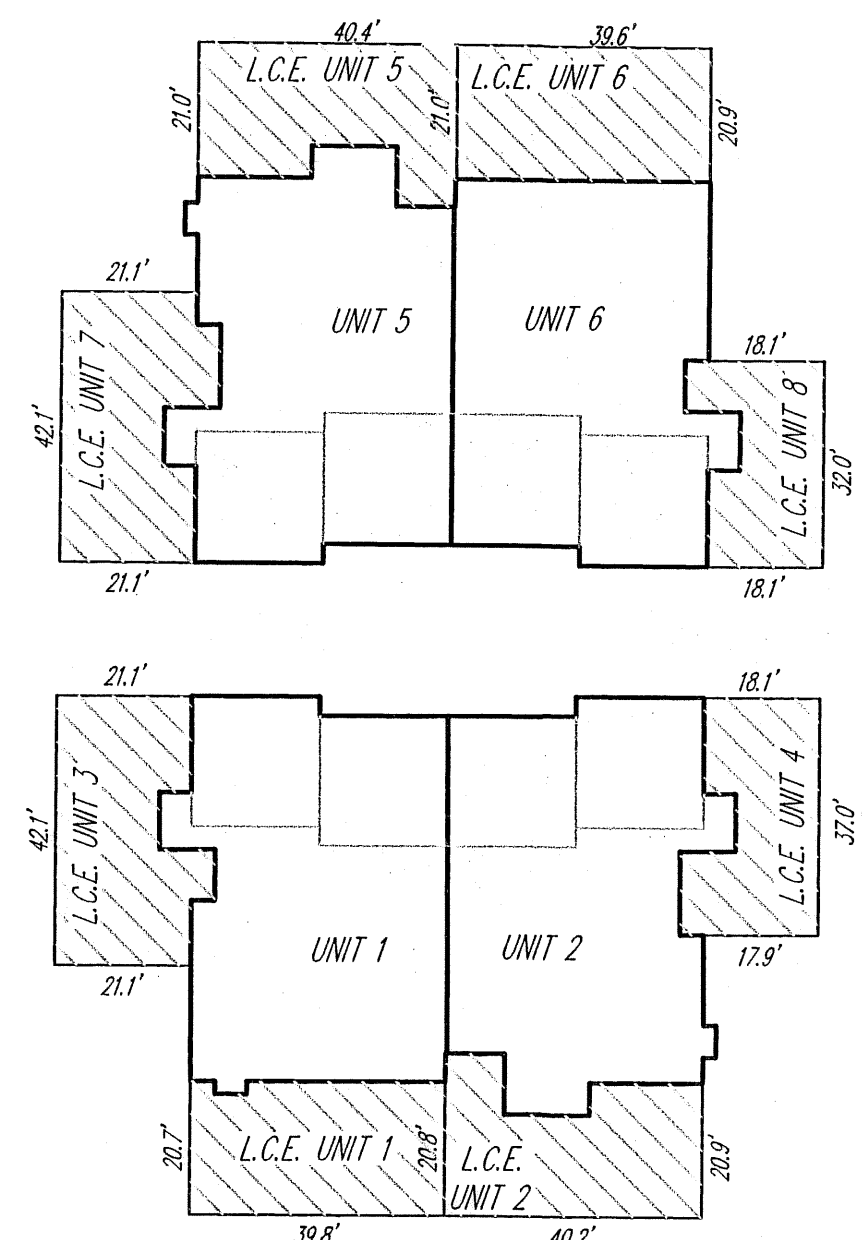
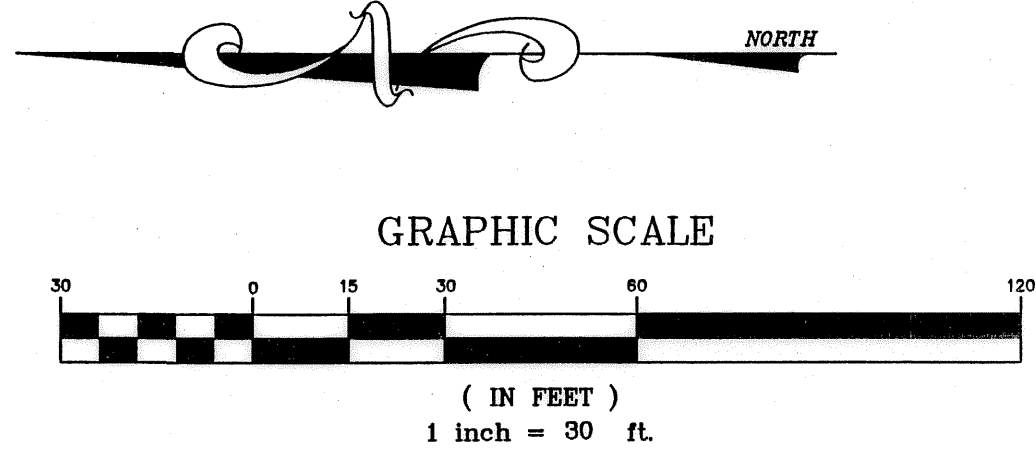
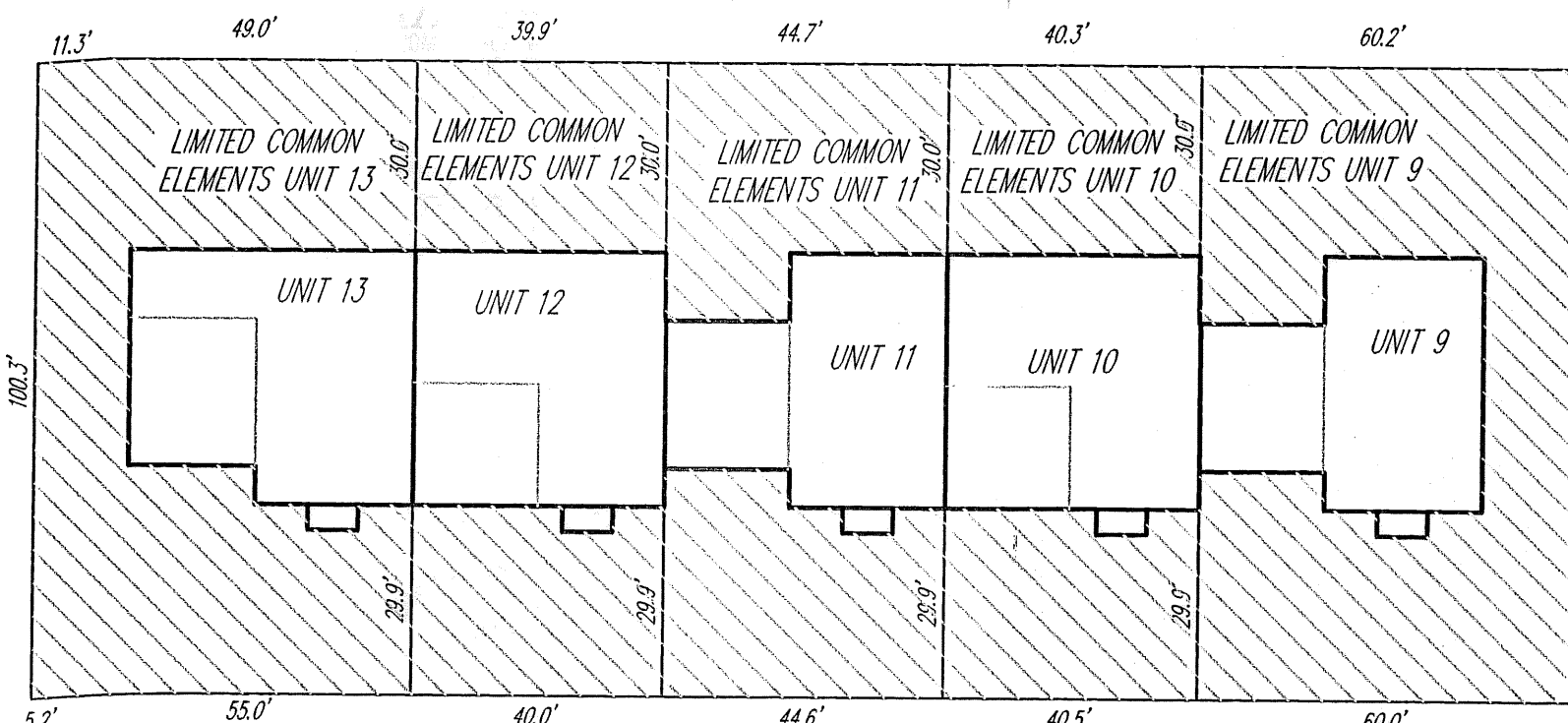


Center Road (60' Wide)

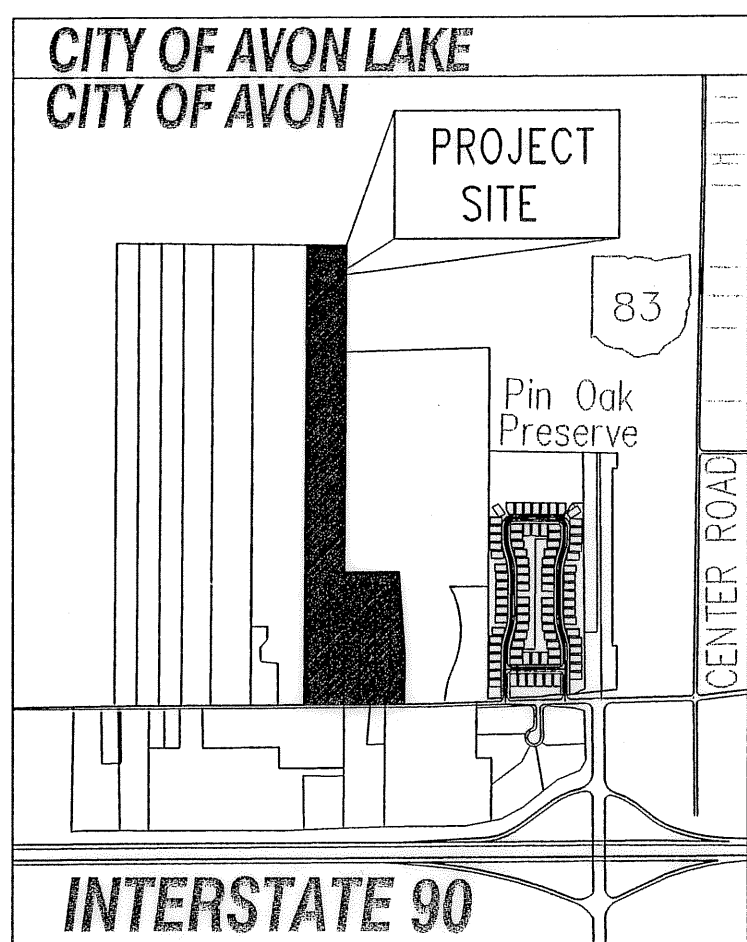


BOUNDARY SURVEY LEGEND

- 5/8" IRON PIN SET
 - IRON PIN/PIPE FOUND
 - ▣ MON BOX FOUND WITH PIN/PIPE
 - ▢ MONUMENT BOX FOUND EMPTY
 - ▲ SURVEY NAIL SET
 - △ SURVEY NAIL FOUND
 - STONE MONUMENT FOUND
- A., ACT. ACTUAL MEASUREMENT OR CALCULATION
U., USED USED MEASUREMENT OR MONUMENT
M., MSD MEASURED
D., R., REC. DEED OR RECORD
CALC. CALCULATED
C/L CENTERLINE
O., OBS. OBSERVED
P.P.N. PERMANENT PARCEL NUMBER

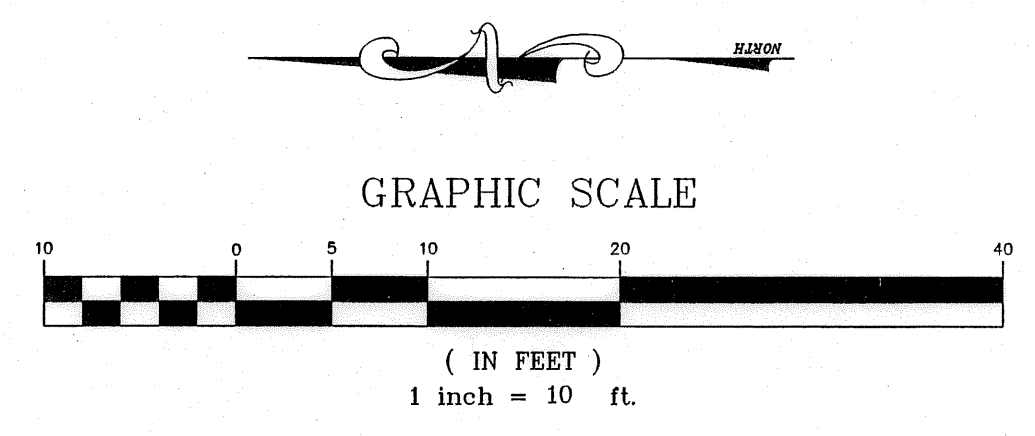
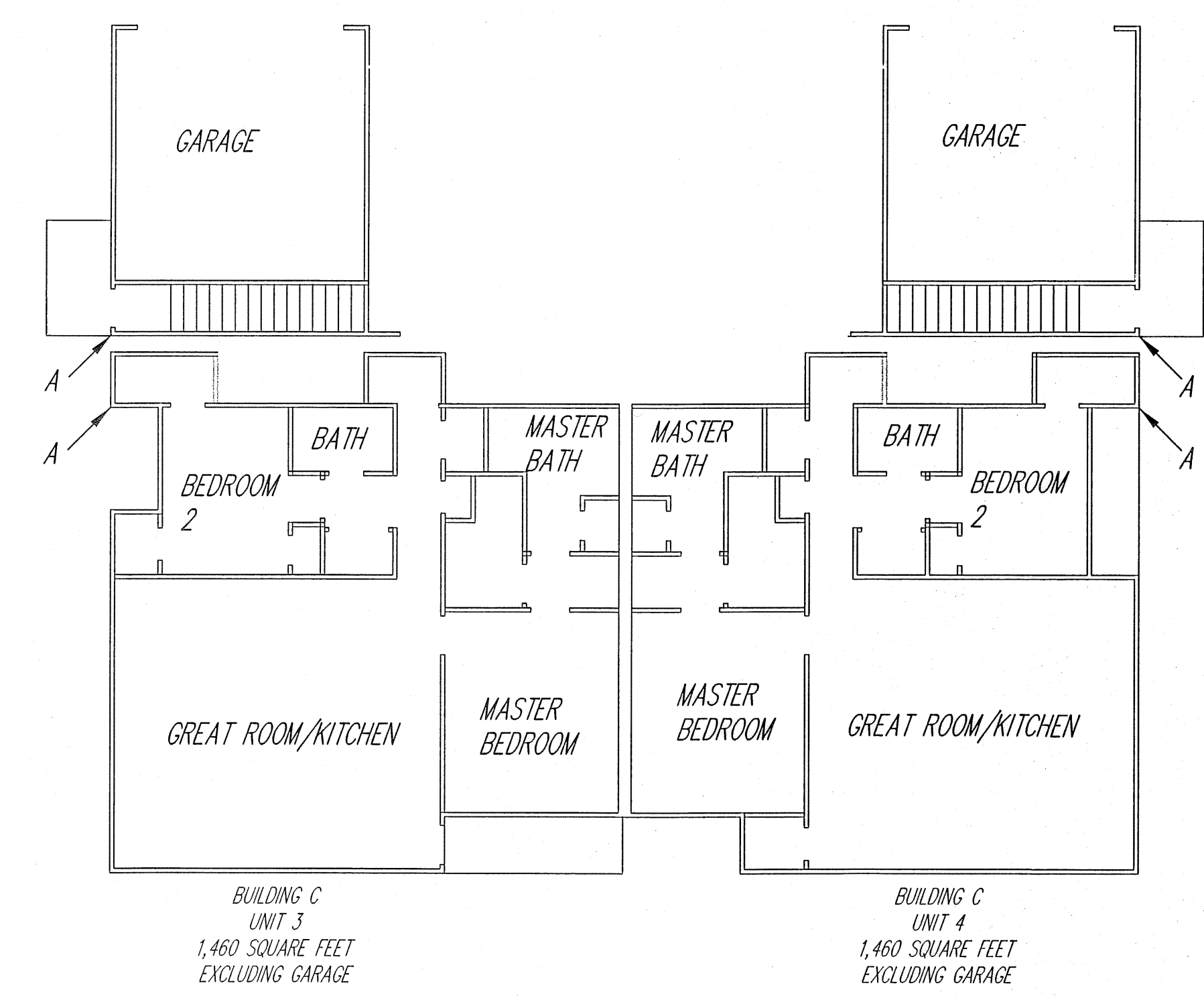
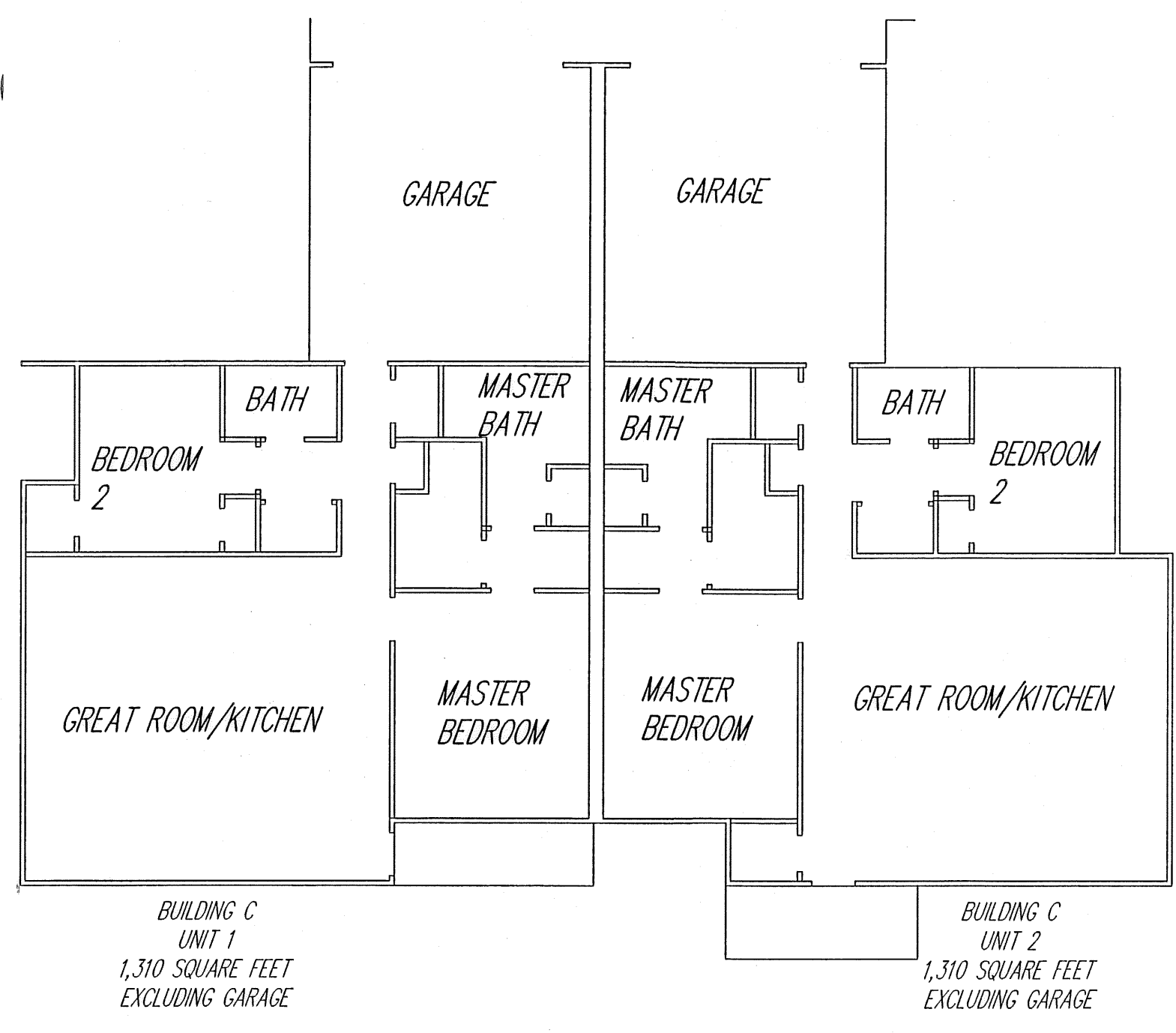
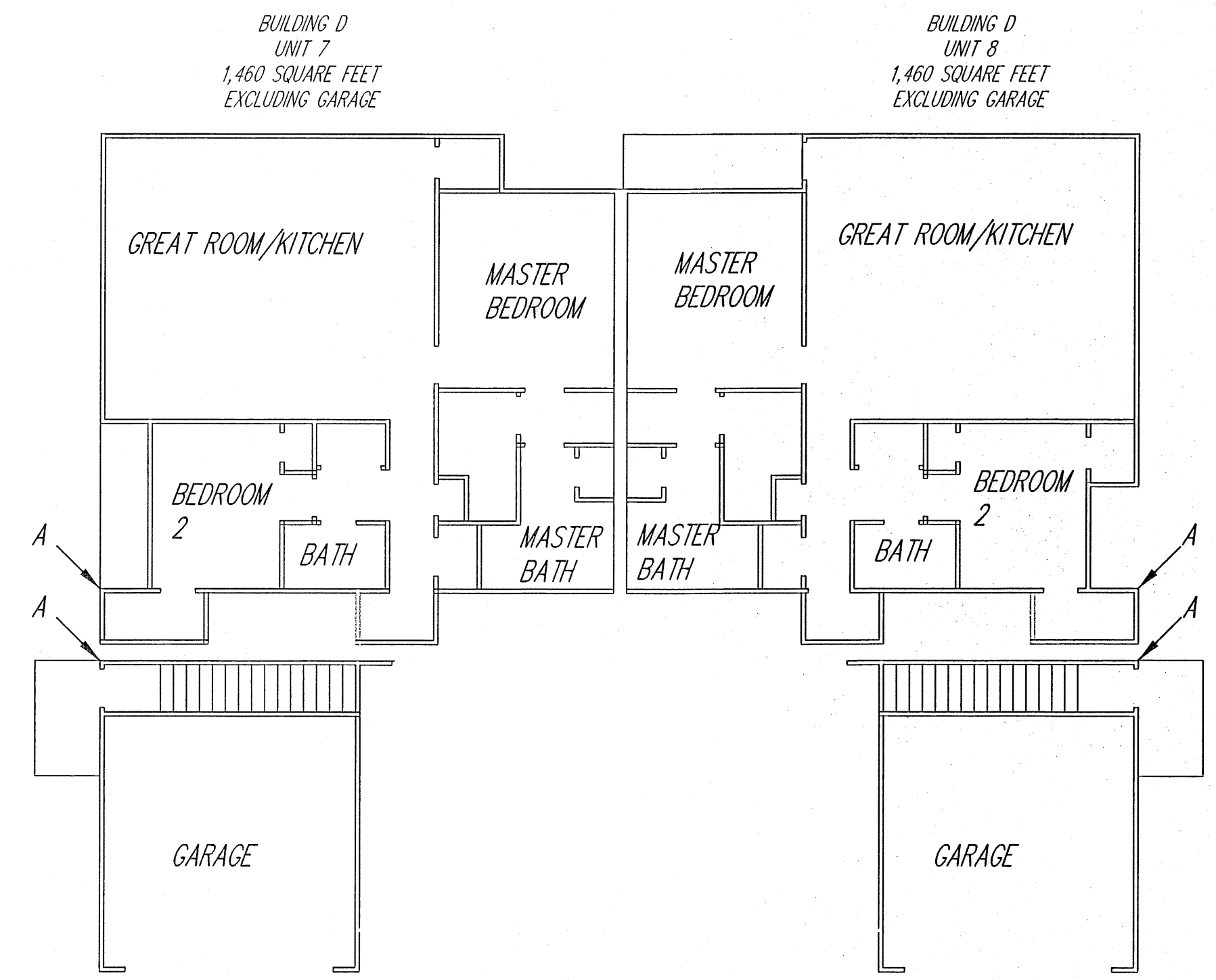
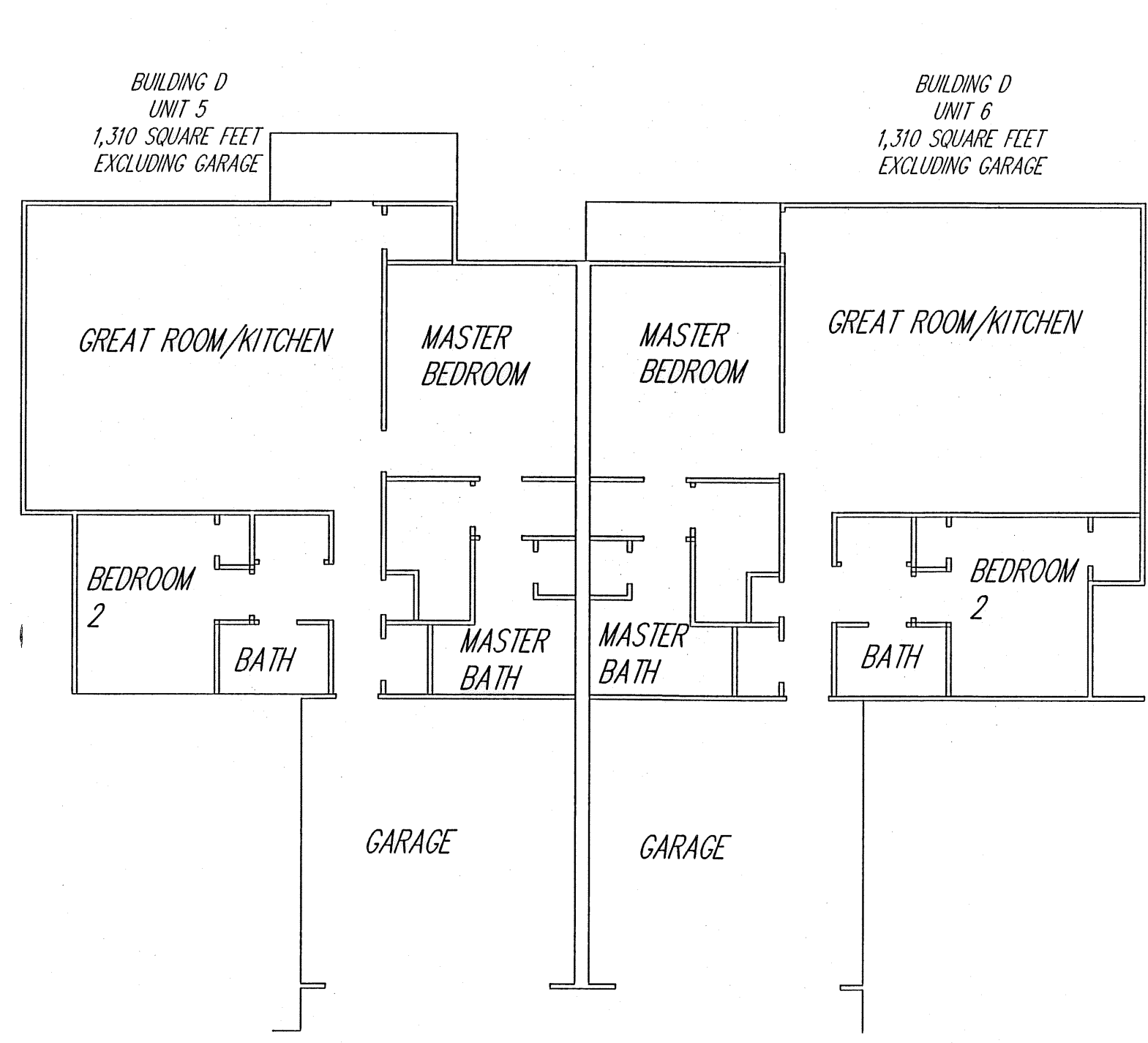


CURVE TABLE						
CURVE	LENGTH	RADIUS	TANGENT	CHORD	BEARING	DELTA
C1	16.35	220.00	8.18	16.35	N01°30'29"W	47°53'0"



Section No. 16
Section No. 9

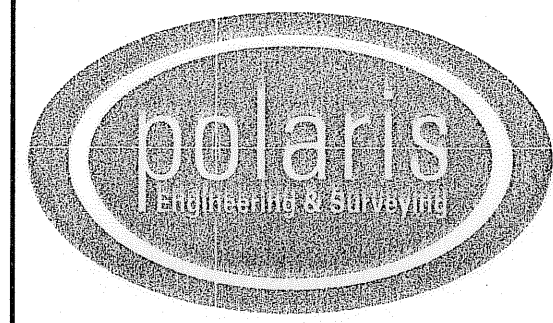
REV. No.	DATE	BY	CHK'D	DATE: 11/21/07	<p>CONDOMINIUM PHASE 1</p> <p>CITY OF AVON - LORAIN COUNTY - OHIO</p> <p>POLARIS ENGINEERING & SURVEYING, INC. 34600 CHARDON ROAD - SUITE D WILLOUGHBY HILLS, OHIO 44094 (440) 944-4433 (440) 944-3722 (Fax) www.polaris-es.com</p>	<p>CONTRACT No.</p> <p>04-567</p>	
				SCALE: HOR. 1"=100'			<p>SHEET</p> <p>1</p>
				VERT. 1"=0'			
				FOLDER: 2004/DWG/PLATS			CONCORD VILLAGE CONDOMINIUM



REV. No.	DATE	BY	CH'K'D

DATE: 11/21/07
 SCALE: HOR. 1"=100'
 VERT. 1"=0'
 FOLDER: 2004/DWG/PLATS
 FILENAME: CONDOMINIUM.DWG
 TAB: CONDO-02
 DRAWN: MPS

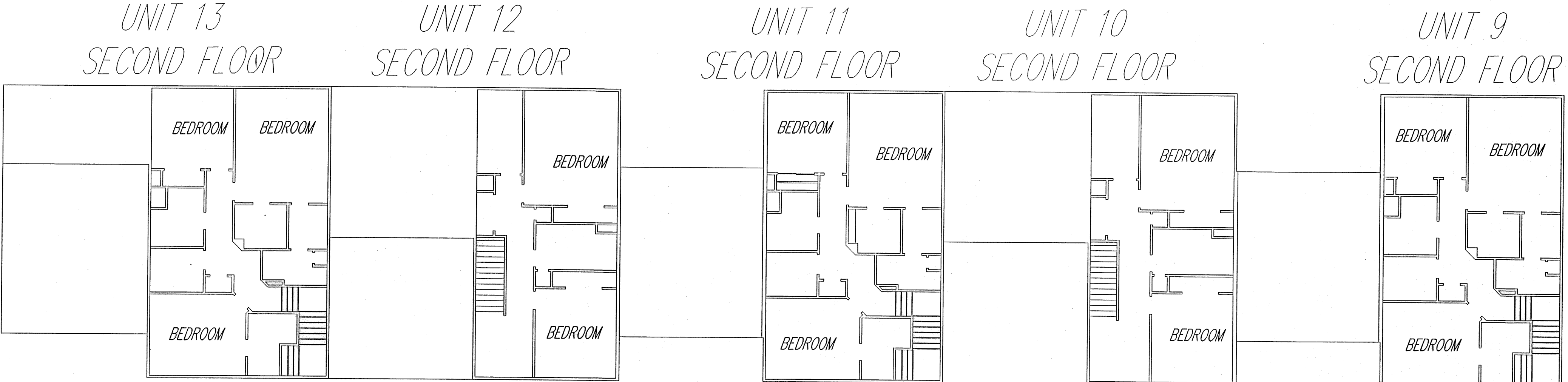
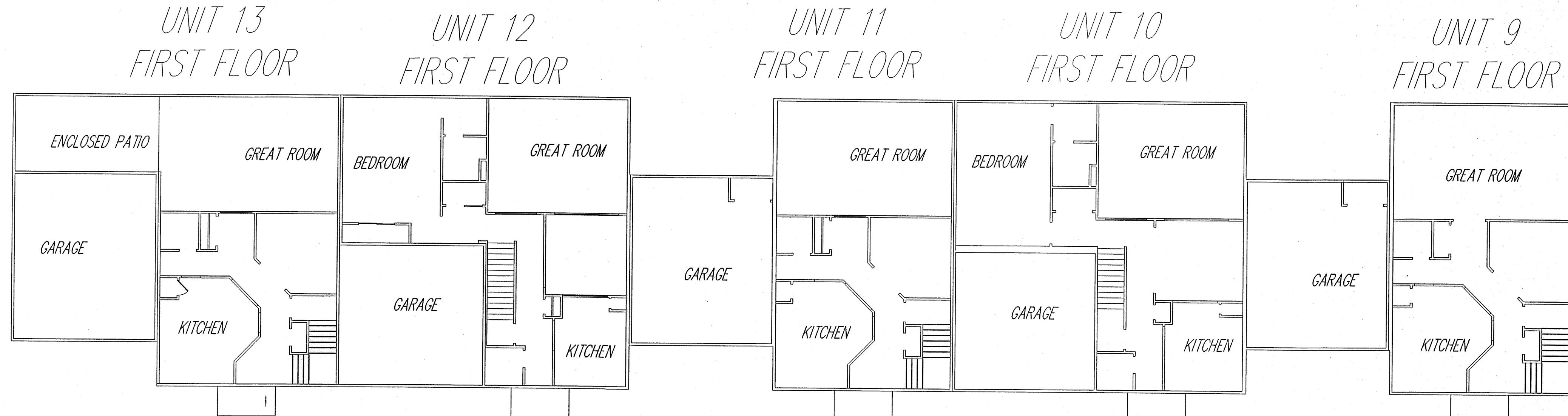
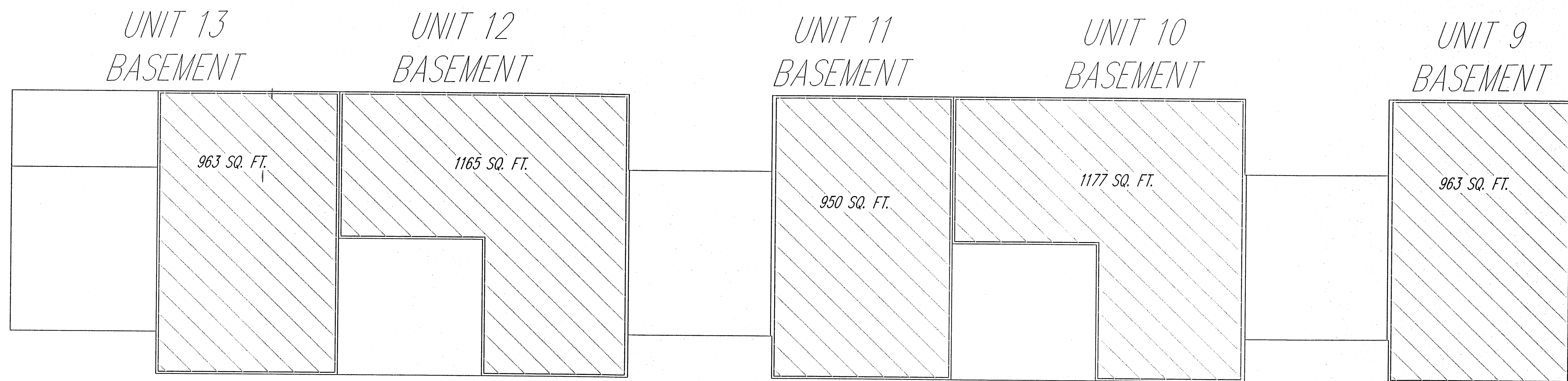
CONDOMINIUM
 PHASE 1
 CITY OF AVON - LORAIN COUNTY - OHIO



POLARIS ENGINEERING & SURVEYING, INC.
 34600 CHARDON ROAD - SUITE D
 WILLOUGHBY HILLS, OHIO 44094
 (440) 944-4433 (440) 944-3722 (Fax)
 www.polaris-es.com

CONCORD VILLAGE
 CONDOMINIUM

CONTRACT No.	
04-567	
SHEET	OF
2	4



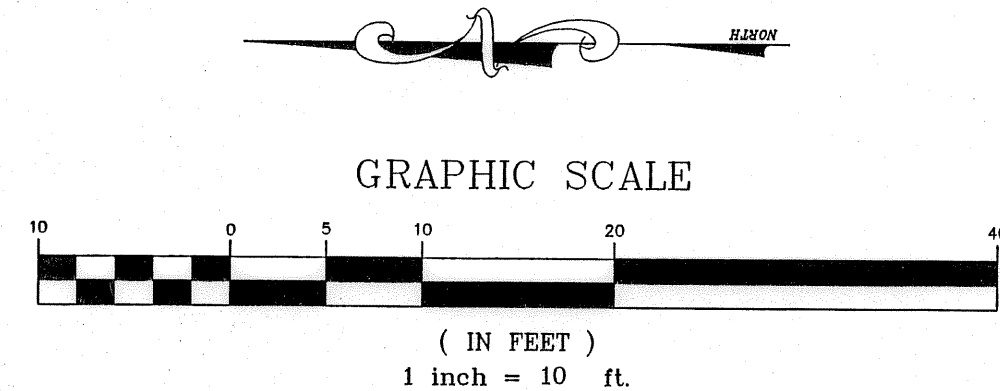
UNIT 13 - 2122 SQUARE FEET
EXCLUDING BASEMENT AND GARAGE

UNIT 12 - 1942 SQUARE FEET
EXCLUDING BASEMENT AND GARAGE

UNIT 11 - 1900 SQUARE FEET
EXCLUDING BASEMENT AND GARAGE

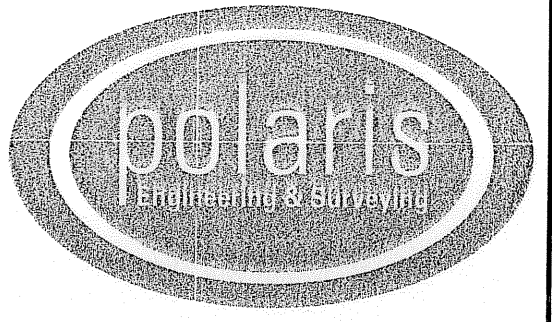
UNIT 10 - 1980 SQUARE FEET
EXCLUDING BASEMENT AND GARAGE

UNIT 9 - 1928 SQUARE FEET
EXCLUDING BASEMENT AND GARAGE



REV. No.		DATE	BY	CH'K'D	DATE: 11/21/07
					SCALE: HOR. 1"=100'
					VERT. 1"=0'
					FOLDER: 2004/DWG/PLATS
					FILENAME: CONDOMINIUM.DWG
					TAB: CONDO-02
					DRAWN: MPS

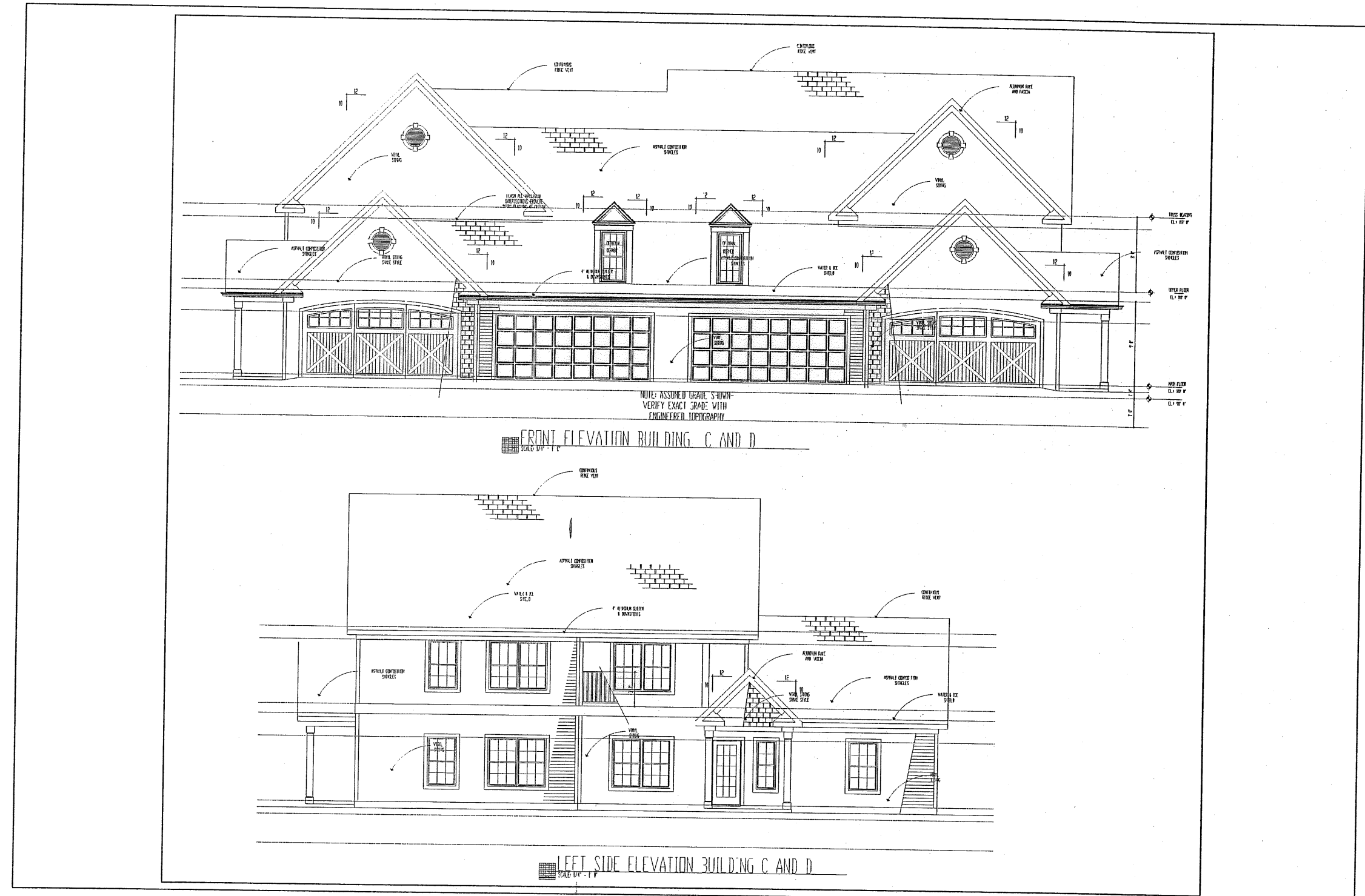
CONDOMINIUM
PHASE 1
CITY OF AVON - LORAIN COUNTY - OHIO



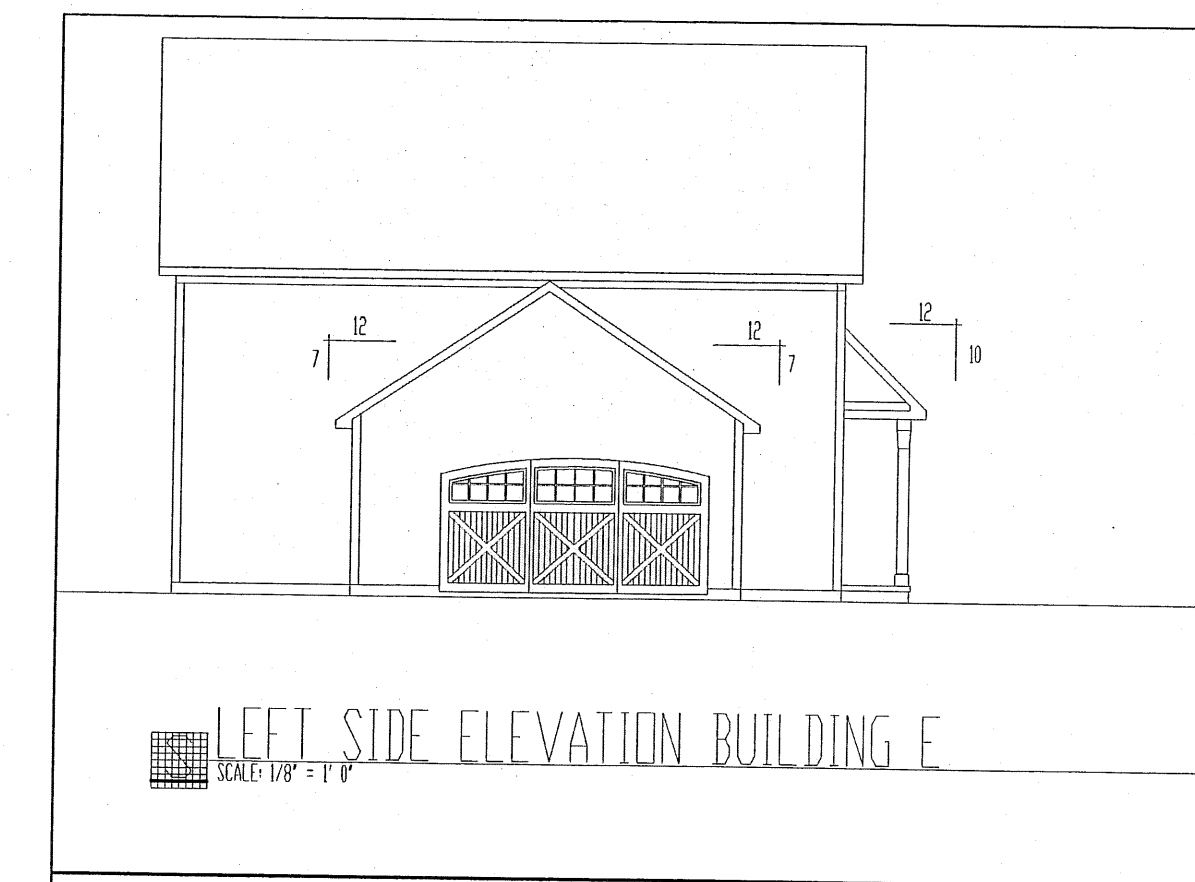
POLARIS ENGINEERING & SURVEYING, INC.
34600 CHARDON ROAD - SUITE D
WILLOUGHBY HILLS, OHIO 44094
(440) 944-4433 (440) 944-3722 (Fax)
www.polaris-es.com

CONCORD VILLAGE
CONDOMINIUM

CONTRACT No.	
04-567	
SHEET	OF
3	4



ELEVATIONS UNITS 1-8

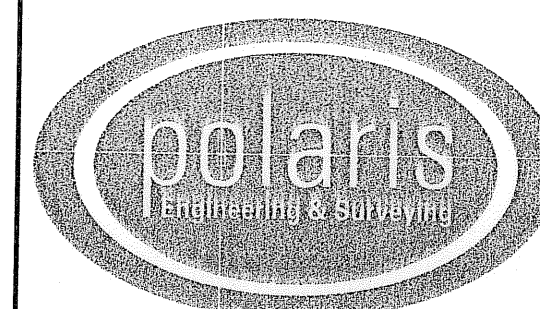


ELEVATIONS UNITS 9-13

REV. No.	DATE	BY	CHK'D

DATE: 11/21/07
 SCALE: HOR. 1"=100'
 VERT. 1"=0'
 FOLDER: 2004/DWG/PLATS
 FILENAME: CONDOMINIUM.DWG
 TAB: CONDO-02
 DRAWN: MPS

CONDOMINIUM
 PHASE 1
 CITY OF AVON - LORAIN COUNTY - OHIO



POLARIS ENGINEERING & SURVEYING, INC.
 34600 CHARDON ROAD - SUITE D
 WILLOUGHBY HILLS, OHIO 44094
 (440) 944-4433 (440) 944-3722 (Fax)
 www.polaris-es.com

CONCORD VILLAGE
 CONDOMINIUM

CONTRACT No.	
04-567	
SHEET	OF
4	4