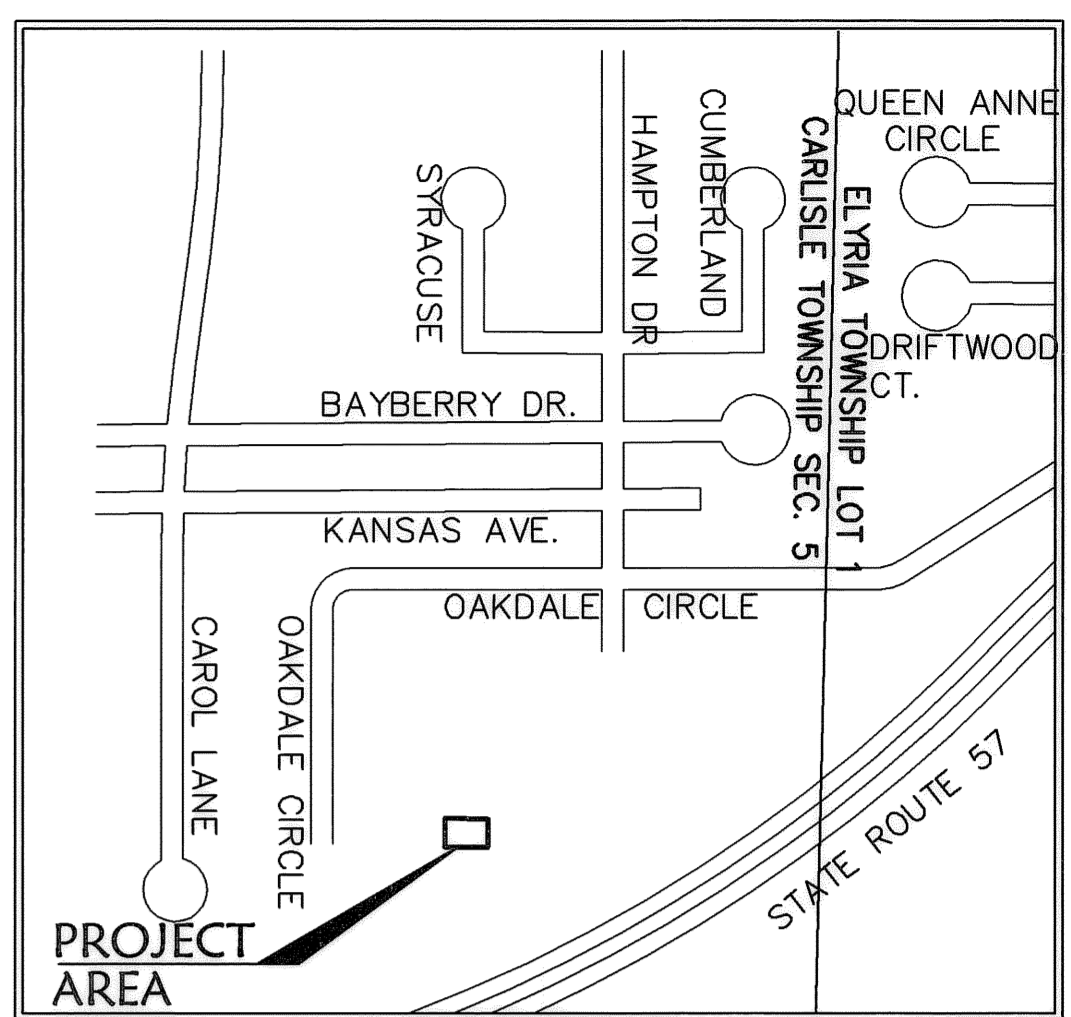
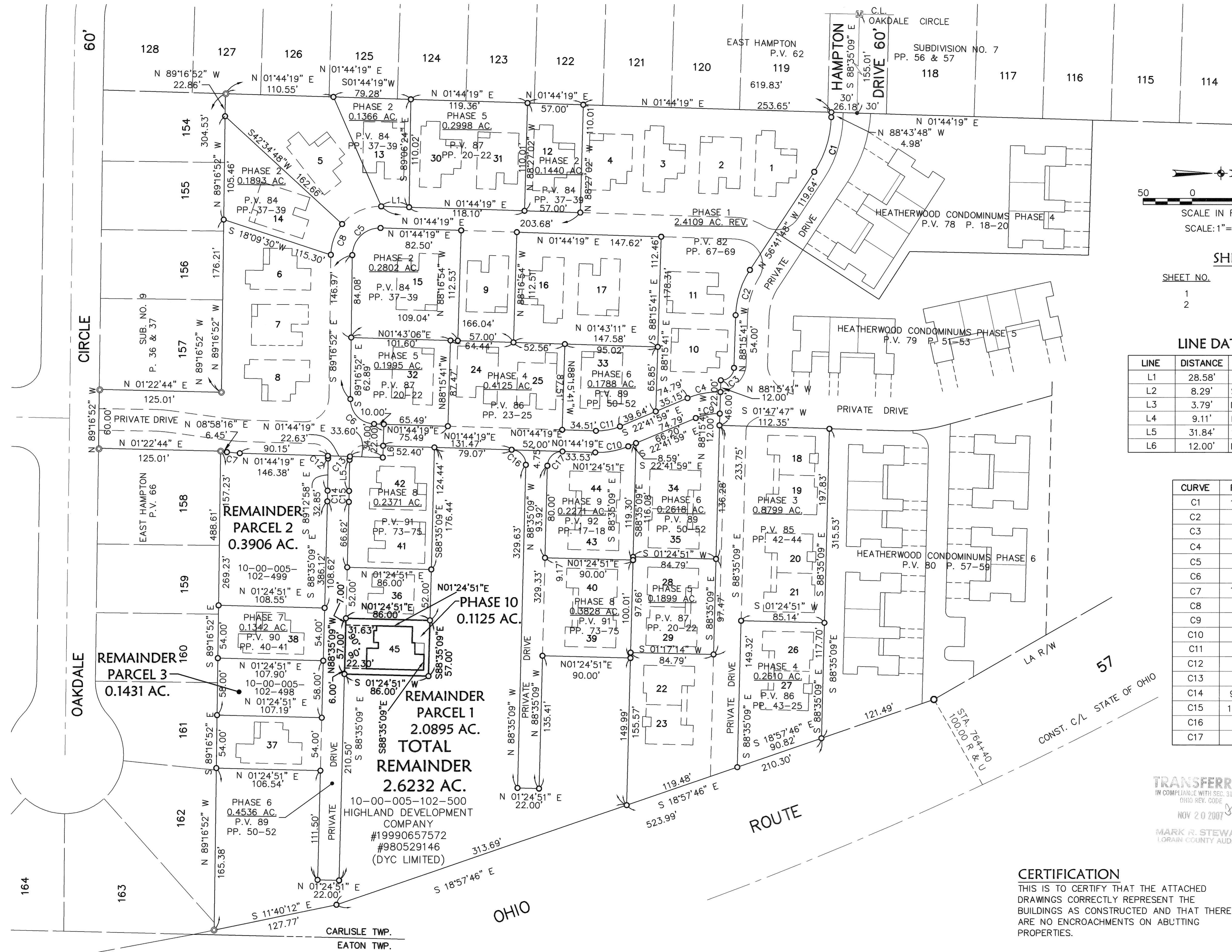
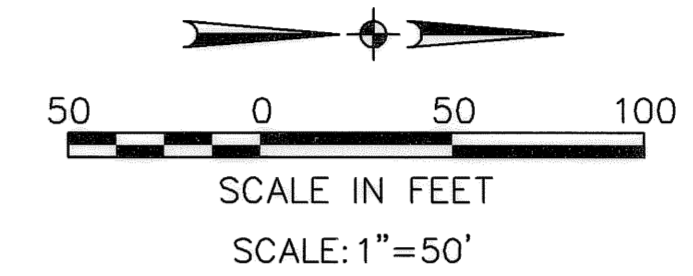


R:\04000\04142-CP10\control\dwg\10-PLAT01.dwg 11/9/2007 9:03:16 AM EST



AREA MAP - NO SCALE



SHEET INDEX

SHEET NO.	DESCRIPTION
1	SURVEY MAP
2	FLOOR & FOUNDATION PLANS & ELEVATIONS

BEARING SYSTEM IS TAKEN FROM THE HEATHERWOOD PROJECT.

LINE DATA

LINE	DISTANCE	BEARING
L1	28.58'	N 01°44'19" E
L2	8.29'	S 89°06'24" E
L3	3.79'	N 00°53'36" E
L4	9.11'	N 66°18'03" E
L5	31.84'	S 89°12'58" E
L6	12.00'	N 88°15'41" W

LEGEND

- ⊙ - IRON PIN/PIPE FOUND
- ⊞ - MONUMENT BOX FOUND
- - 5/8" CAPPED REBAR SET
- - PK NAIL SET

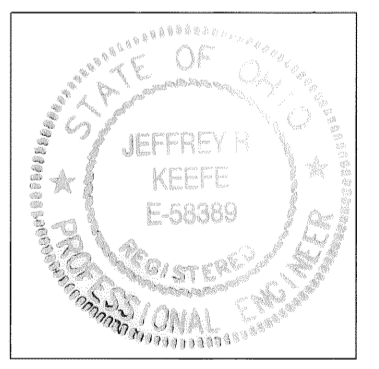
PHASE 10 TOTAL = 0.1125 AC.

CURVE DATA

CURVE	RADIUS	LENGTH	TANGENT	DELTA	CHORD	BEARING
C1	105.63'	59.06'	30.32'	32°02'01"	58.29'	N72°42'48"W
C2	88.73'	48.88'	25.08'	31°33'53"	48.27'	S72°28'44"E
C3	13.00'	20.42'	13.00'	90°00'00"	18.38'	N43°15'41"W
C4	81.00'	34.55'	17.54'	24°26'18"	34.29'	S10°28'50"E
C5	28.00'	44.48'	28.50'	91°01'11"	39.95'	N43°46'16"W
C6	25.00'	38.82'	38.82'	88°58'49"	35.04'	S46°13'44"W
C7	125.62'	13.25'	6.63'	6°02'35"	13.24'	N04°51'23"E
C8	50.00'	34.04'	17.71'	39°00'21"	33.39'	S69°46'41"E
C9	59.00'	25.17'	12.78'	24°26'18"	24.97'	N10°28'50"W
C10	81.00'	34.55'	17.54'	24°26'18"	34.29'	S10°28'50"E
C11	59.00'	25.17'	12.78'	24°26'18"	24.97'	N10°28'50"W
C12	15.00'	2.74'	1.37'	10°26'51"	2.73'	N85°34'18"E
C13	15.00'	3.38'	1.70'	12°54'42"	3.37'	S82°45'44"E
C14	973.95'	10.88'	5.44'	00°38'24"	10.88'	S88°54'03"E
C15	1033.24'	11.12'	5.56'	00°37'00"	11.12'	S88°54'03"E
C16	15.00'	23.47'	14.91'	89°39'32"	21.15'	S46°34'35"W
C17	15.00'	23.64'	15.08'	90°18'26"	21.27'	S43°25'25"E

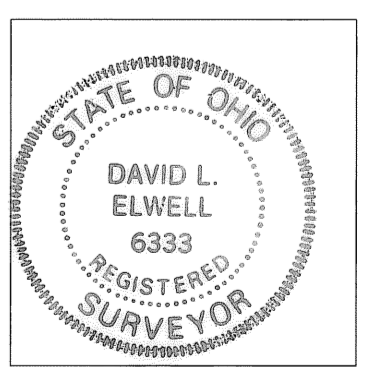
TRANSFERRED
IN COMPLIANCE WITH SEC. 319.202
OHIO REV. CODE
NOV 20 2007
MARK R. STEWART
LORAIN COUNTY AUDITOR

JEFFREY R. KEEFE
PROFESSIONAL ENGINEER NO. 58389



CERTIFICATION
THIS IS TO CERTIFY THAT THE ATTACHED DRAWINGS CORRECTLY REPRESENT THE BUILDINGS AS CONSTRUCTED AND THAT THERE ARE NO ENCROACHMENTS ON ADJUTING PROPERTIES.

DAVID L. ELWELL
PROFESSIONAL SURVEYOR NO. 6333

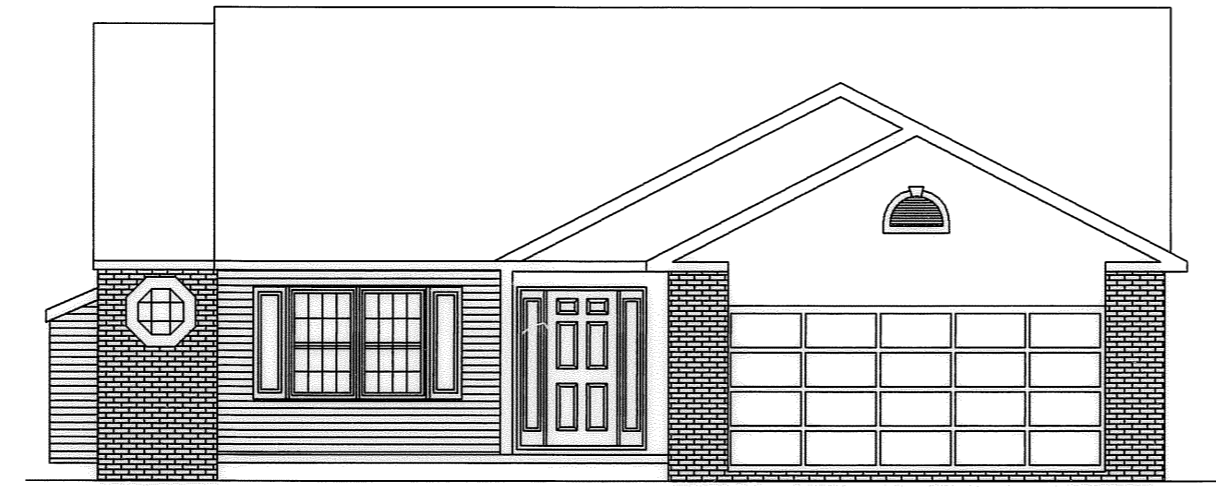
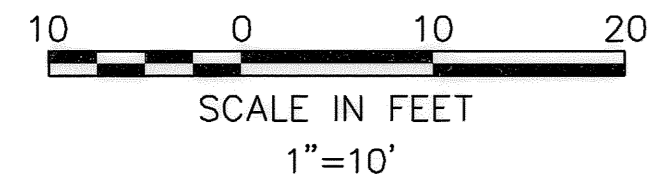


DATE	DESCRIPTION	BY
11-9-07		
11-9-07	CPW/RGR	
11-9-07	DLE	
11-9-07	10-PLAT01	
11-9-07	04000\04142-CP10	
11-9-07		

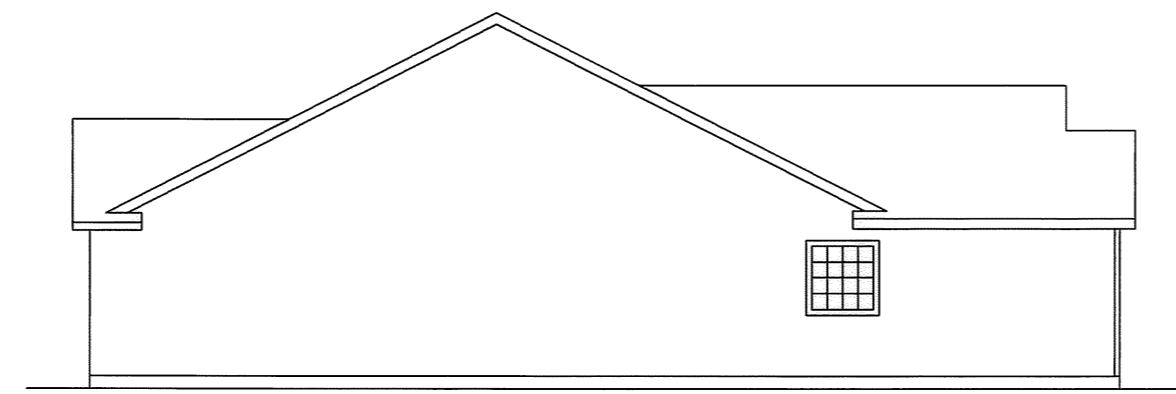
KS ASSOCIATES
KS Associates, Inc.
260 Burns Road, Suite 100
Elyria, OH 44035
P 440 365 4730
F 440 365 4790
www.ksassociates.com

CHESAPEAKE CONDOMINIUM PHASE NO. 10
PART OF ORIGINAL CARLISLE TOWNSHIP SECTION NO. 5 CITY OF ELYRIA COUNTY OF LORAIN STATE OF OHIO

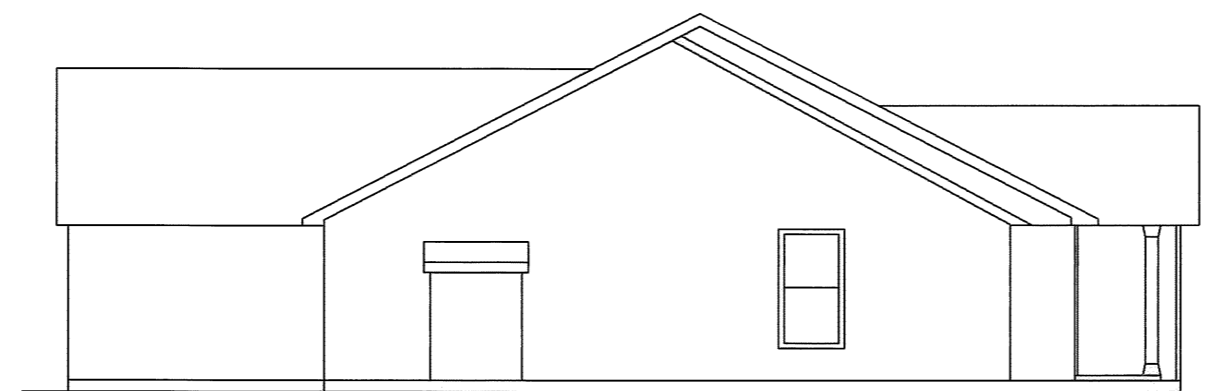
SHEET 1 OF 2
JOB NO. 04142-CP10



FRONT ELEVATION
ROBIN MODEL



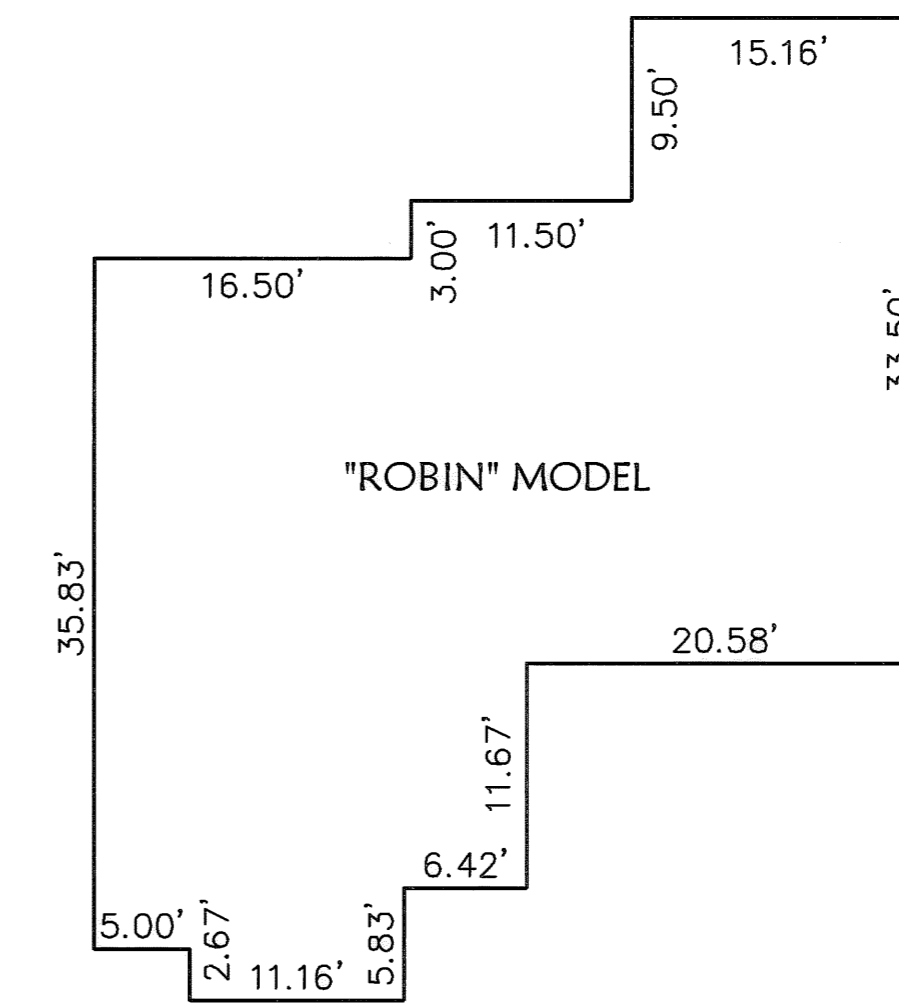
RIGHT SIDE ELEVATION



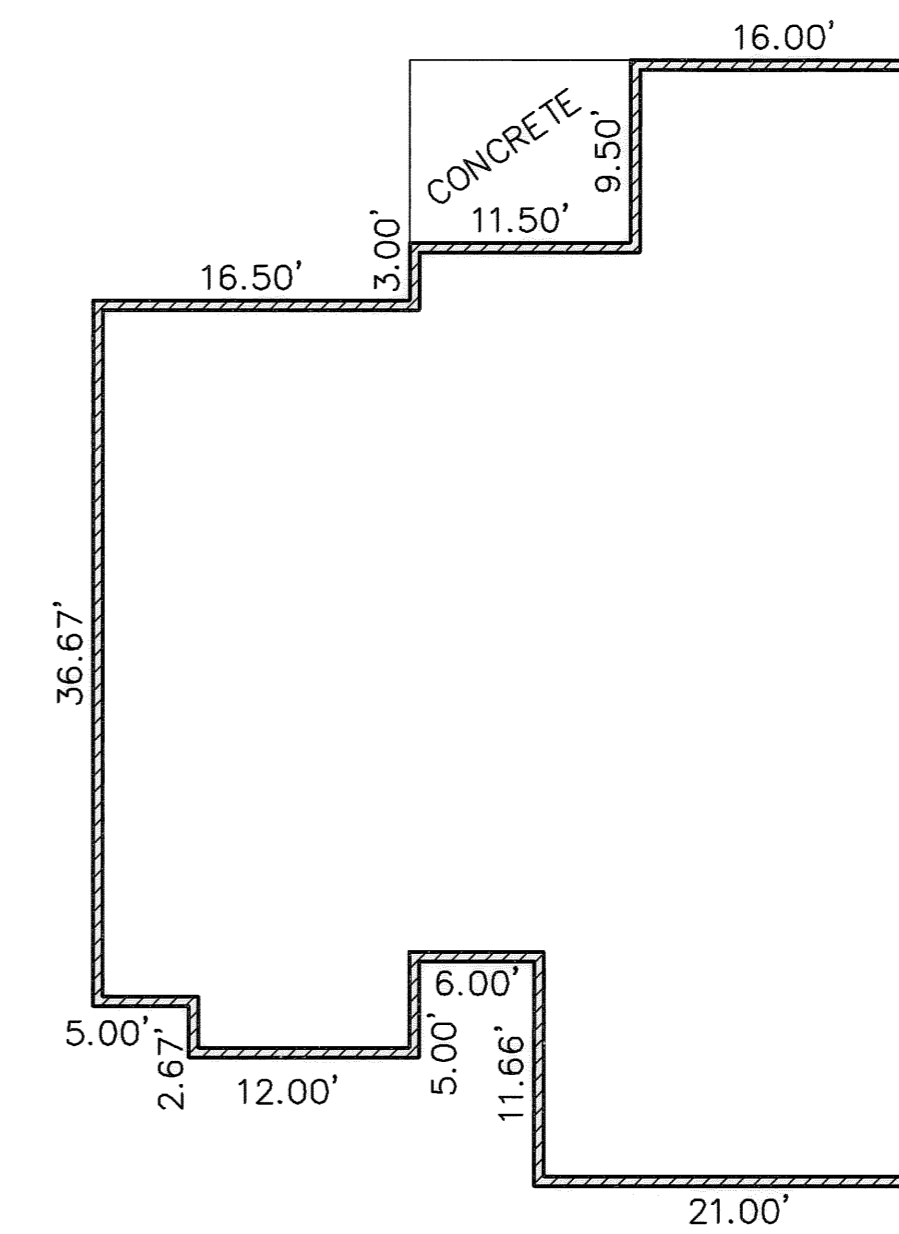
LEFT SIDE ELEVATION



REAR ELEVATION



FIRST FLOOR PLAN
(INTERIOR DIMENSIONS)



FOUNDATION PLAN
(EXTERIOR DIMENSIONS)

OWNERSHIP PERCENTAGES

UNIT NO.	SQ. FT.	ELEV. F.F.	% OWNERSHIP
1	1427.16	748.93	2.2154
2	1645.51	749.08	2.5543
3	1427.16	749.45	2.2154
4	1637.92	749.47	2.5425
5	1427.16	749.50	2.2154
6	1427.16	749.44	2.2154
7	1645.51	749.42	2.5543
8	1427.16	749.44	2.2154
9	1645.51	749.84	2.5543
10	1637.92	749.45	2.5425
11	1645.51	748.48	2.5543
12	1427.16	749.86	2.2154
13	1645.51	749.53	2.5543
14	1645.51	749.39	2.5543
15	1645.51	749.69	2.5543
16	1427.16	749.36	2.2154
17	1645.51	749.23	2.5543
18	1154.56	749.35	1.7922
19	1305.39	749.35	2.0263
20	1154.56	749.41	1.7922
21	1154.56	749.41	1.7922
22	1305.39	750.46	2.0263
23	1154.56	750.46	1.7922
24	1645.51	749.53	2.5543
25	1207.46	749.20	1.8743
26	1305.39	749.81	2.0263
27	1154.56	749.81	1.7922
28	1305.39	750.04	2.0263
29	1305.39	750.04	2.0263
30	1427.16	749.50	2.2154
31	1645.51	749.70	2.5543
32	1645.51	749.35	2.5543
33	1645.51	749.07	2.5543
34	1305.39	749.17	2.0263
35	1305.39	749.17	2.0263
36	1207.46	749.26	1.8743
37	1427.16	749.44	2.2154
38	1427.16	749.36	2.2154
39	1305.39	749.84	2.0263
40	1305.39	749.84	2.0263
41	1645.51	749.45	2.5543
42	1460.23	749.69	2.2667
43	1305.39	749.38	2.0263
44	1305.39	749.38	2.0263
45	1474.73	749.33	2.2892
TOTAL	64421.04 S.F.		100.00%

R:\04000\04142-CP10\ddt\control\dwg\10-PLAN01.dwg 11/9/2007 10:14:46 AM EST

REVISIONS	DATE	DESCRIPTION	BY

KS Associates, Inc.
260 Burns Road, Suite 100
Elyria, OH 44035
P 440 365 4730
F 440 365 4790
www.ksassociates.com

**CHESAPEAKE CONDOMINIUM
PHASE NO. 10**
PART OF
ORIGINAL CARLISLE TOWNSHIP SECTION NO. 5
CITY OF ELYRIA COUNTY OF LORAIN STATE OF OHIO

SHEET
2
OF
2
JOB NO.
04142-CP10

Jeffrey R. Keefe
JEFFREY R. KEEFE
PROFESSIONAL ENGINEER NO. 58389

David L. Elwell
DAVID L. ELWELL
PROFESSIONAL SURVEYOR NO. 6333

