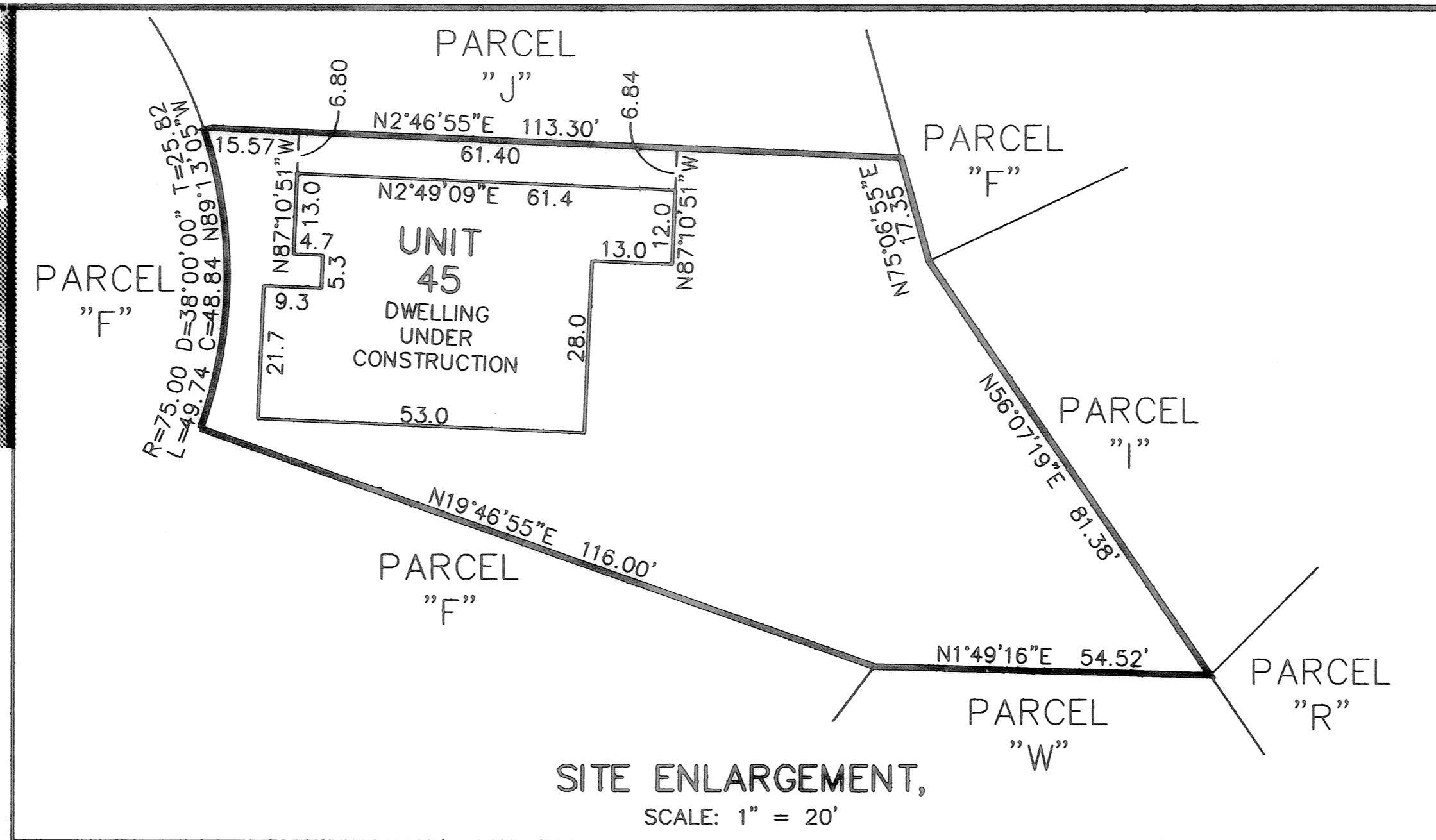


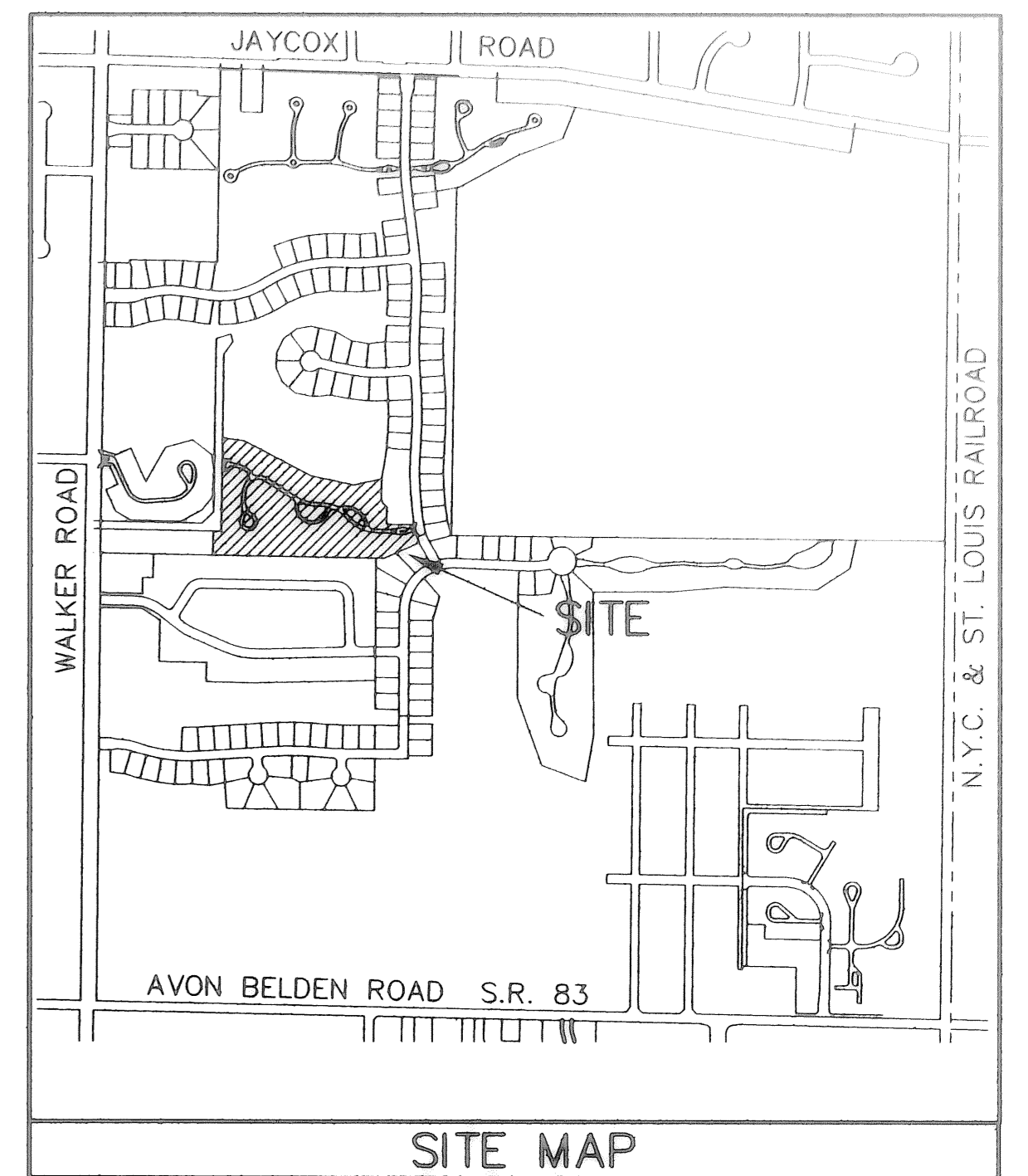


UNIT 45 FRONT

UNIT 45 REAR



SITE ENLARGEMENT,
SCALE: 1" = 20'



SITE MAP

ACREAGE BREAKDOWN:

TOTAL SITE	622,725 SQ. FT.	14.2958 ACRES
PHASE ONE	112,862 SQ. FT.	2.5910 ACRES
PHASE TWO	12,867 SQ. FT.	0.2954 ACRES
PHASE THREE	201,632 SQ. FT.	4.6288 ACRES
PHASE FOUR	45,514 SQ. FT.	1.0449 ACRES
PHASE FIVE	46,810 SQ. FT.	1.0746 ACRES
PHASE SIX	102,882 SQ. FT.	2.3619 ACRES
PHASE SEVEN	47,794 SQ. FT.	1.0972 ACRES
PHASE EIGHT	7,653 SQ. FT.	0.1757 ACRES
PHASE NINE	7,418 SQ. FT.	0.1703 ACRES
PHASE TEN	9,255 SQ. FT.	0.2125 ACRES
REMAINDERS	24,041 SQ. FT.	0.5519 ACRES

BUCKHEAD 60'
N4°05'05"W
PUBLIC R/W

R=2200.00
D=10°00'00"
L=363.97
C=383.49
N89°16'55"E
T=192.48

R=2200.00
D=10°00'00"
L=363.97
C=383.49
N89°16'55"E
T=192.48

R=2200.00
D=10°00'00"
L=363.97
C=383.49
N89°16'55"E
T=192.48

R=2200.00
D=10°00'00"
L=363.97
C=383.49
N89°16'55"E
T=192.48

R=2200.00
D=10°00'00"
L=363.97
C=383.49
N89°16'55"E
T=192.48

R=2200.00
D=10°00'00"
L=363.97
C=383.49
N89°16'55"E
T=192.48

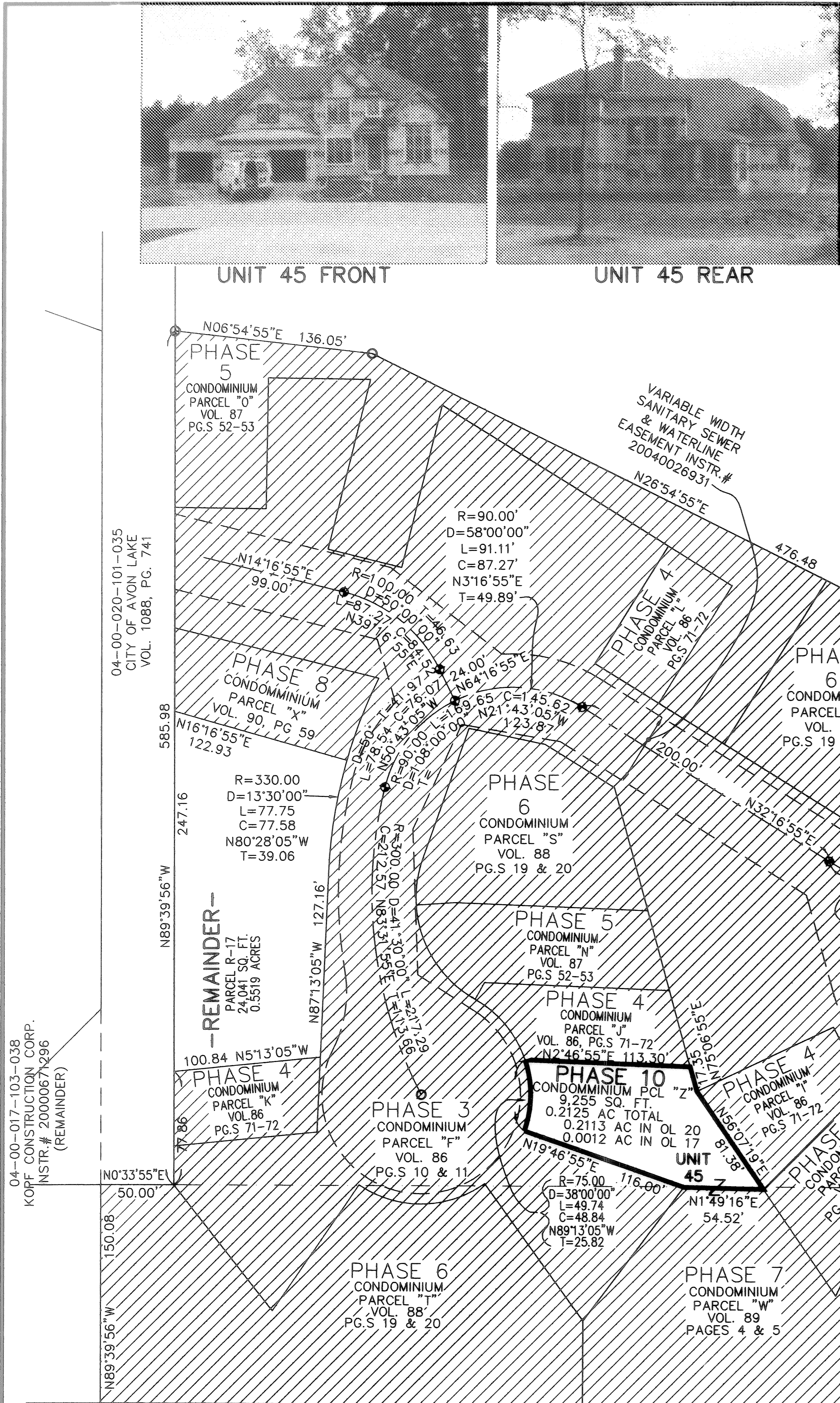
R=2200.00
D=10°00'00"
L=363.97
C=383.49
N89°16'55"E
T=192.48

R=2200.00
D=10°00'00"
L=363.97
C=383.49
N89°16'55"E
T=192.48

R=2200.00
D=10°00'00"
L=363.97
C=383.49
N89°16'55"E
T=192.48

R=2200.00
D=10°00'00"
L=363.97
C=383.49
N89°16'55"E
T=192.48

R=2200.00
D=10°00'00"
L=363.97
C=383.49
N89°16'55"E
T=192.48



WINDSOR HOLLOW SUBDIVISION NO. 2, VOL. 52, PG. 7

LEGEND:

- ⊙ DENOTES 5/8" CAPPED (REITZ ENG.) IRON PIN IN MONUMENT BOX USED.
- DENOTES 5/8" CAPPED (REITZ ENG.) IRON PIN USED.
- ⊙ DENOTES 1/4" DRILL HOLE USED

GRAPHIC SCALE: 1" = 50'

0 25 50 100

LEGACY POINTE CONDOMINIUM NO. 3 PH 10

OF PART OF ORIGINAL AVON TWP. SEC #17 & #20
CITY OF AVON LAKE, COUNTY OF LORAIN, OHIO

THE HENRY G. REITZ ENGINEERING COMPANY

4214 ROCKY RIVER DRIVE
CLEVELAND, OHIO 44135
PHONE: (216) 251-3033

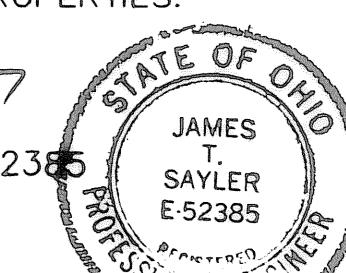
1
1
SEPTEMBER
2007

TRANSFERRED
IN COMPLIANCE WITH SEC. 318.02
OHIO REV. CODE
NOV 13 2007
MARK R. STEWART
LORAIN COUNTY AUDITOR

CERTIFICATION
THIS IS TO CERTIFY THAT THE ATTACHED DRAWINGS CORRECTLY REPRESENT THE BUILDINGS AS CONSTRUCTED AND THAT THERE ARE NO ENCROACHMENTS ON ADJUTING PROPERTIES.

JAMES T. SAYLER, P.E.
PROFESSIONAL ENGINEER NO. E-52385

JAMES T. SAYLER
PROFESSIONAL SURVEYOR NO. S-7425



NOTE:
LIMITED COMMON ELEMENTS INCLUDE THE LAND WITHIN 3 FEET FROM THE FOUNDATION AND PATIOS/DECKS/PORCHES/SUNROOMS OF EACH UNIT. AND LAND 12 FEET OFF OF MAIN REAR WALL FOR CONSTRUCTION OF A DECK OR PATIO