

CARRINGTON POINTE ESTATES Subdivision No. 1 (Refile)

MORTGAGEE'S CERTIFICATE

THIS IS TO CERTIFY THAT Jeffrey A. Skonieczny VICE PRESIDENT FIRSTMENT BANK AND JERRY L. YOUNGBERG AS Senior Vice Pres. MORTGAGEE OF LANDS SHOWN HEREON, DO HEREBY ACCEPT THIS PLAT OF CARRINGTON POINTE ESTATES SUBDIVISION No. 1 TO BE CORRECT AND DEDICATE TO PUBLIC USE FOR ROAD PURPOSES, THE ROADS AS SHOWN HEREON.

WITNESS: [Signature]
SIGNED: [Signature] Jeffrey A. Skonieczny VP
[Signature] Jerry L. Youngberg SVP

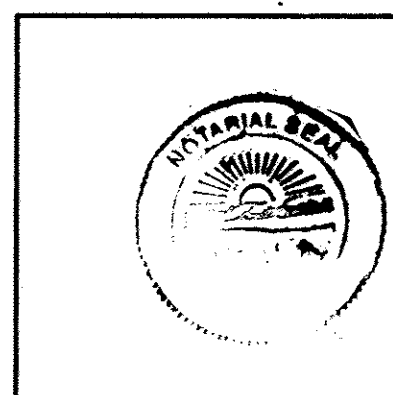
NOTARIAL SEAL

STATE OF OHIO
COUNTY OF LORAIN S.S.

BEFORE ME, A NOTARY PUBLIC IN AND FOR SAID COUNTY AND STATE DID PERSONALLY APPEAR THE ABOVE SIGNED MORTGAGEE WHO ACKNOWLEDGED THE SIGNING OF THIS PLAT TO BE THEIR OWN FREE ACT AND DEED.

IN TESTIMONY WHEREOF I HAVE HEREUNTO SET MY HAND AND OFFICIAL SEAL THIS 13th DAY OF October, 2005.

BY: [Signature] NOTARY PUBLIC
Anita M. Maga
Notary Public, State of Ohio
My Commission Expires 12-6-05
Recorded in Lake County



OWNER'S CERTIFICATE

SITUATED IN THE TOWNSHIP OF CARLISLE, COUNTY OF LORAIN, AND STATE OF OHIO, AND KNOWN AS BEING PART OF CARLISLE TOWNSHIP LOT 24, AND CONTAINING 45.8165 ACRES, AND BEING THE SAME TRACT AS CONVEYED TO CARRINGTON POINTE ESTATES, INC., AND DESCRIBED IN THE DEED RECORDED IN INSTRUMENT NUMBER 20030969099, IN THE OFFICE OF THE RECORDER, LORAIN COUNTY, OHIO.

THE UNDERSIGNED, CARRINGTON POINTE ESTATES, INC. BY DARRYL NORRIS, PRESIDENT (SET FORTH ALL PARTIES HAVING LEGAL TITLE OR INTEREST OF RECORD IN THE PARCEL) HEREBY CERTIFY THAT THE ATTACHED PLAT REPRESENTS CARRINGTON POINTE ESTATES SUBDIVISION No. 1 A SUBDIVISION OF LOTS 1 TO 17, INCLUSIVE, DO HEREBY ACKNOWLEDGE THIS PLAT OF SAME AND DEDICATE TO PUBLIC USE AS SUCH, ALL OR PARTS OF THE ROADS, BOULEVARDS, CUL-DE-SACS, PARKS OR RECREATION AREAS, PLANTING OR RESERVED STRIPS, ETC., SHOWN HEREIN AND NOT HERETOFORE DEDICATED.

THE UNDERSIGNED FURTHER AGREES THAT ANY USE OF IMPROVEMENTS MADE ON THIS LAND SHALL BE IN CONFORMITY WITH ALL EXISTING PLATTING, ZONING, HEALTH OR OTHER LAWFUL RULES OR REGULATIONS INCLUDING THE APPLICABLE OFF-STREET LOADING AND PARKING REQUIREMENTS OF LORAIN COUNTY, OHIO, FOR THE BENEFIT OF HIMSELF (THEMSELVES) AND ALL OTHER SUBSEQUENT PARTIES TAKING TITLE FROM, UNDER OR THROUGH THE UNDERSIGNED.

EASEMENTS ARE RESERVED WHERE INDICATED ON THE PLAT FOR PUBLIC UTILITY PURPOSES ABOVE AND BENEATH THE SURFACE OF THE GROUND.

IN WITNESS THEREOF THE UNDERSIGNED HAVE HEREUNTO SET THEIR HANDS THIS 27th DAY OF Oct, 2005.

WITNESS: [Signature]
SIGNED: [Signature] CARRINGTON POINTE ESTATES, INC.
DARRYL NORRIS, PRESIDENT

re-record
Doc ID: 01888100001 Type: OFF
KIND: PLAT
Recorded: 10/24/2007 at 03:20:16 PM
Fee Amt: \$250.00 Page 1 of 1
Judith M. Nedwick County Recorder
F110 2007-0227959

Judy - self
BOX OLD REP/JODY
ELYRIA, OH 44035
Plat Vol. 92
Pgs. 69, 70 + 71
inc

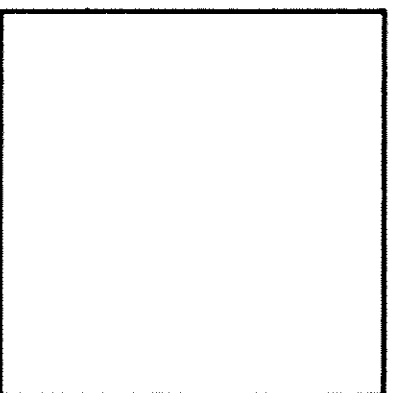
NOTARIAL SEAL

STATE OF OHIO
COUNTY OF LORAIN S.S.

BEFORE ME, A NOTARY PUBLIC IN AND FOR SAID COUNTY AND STATE DID PERSONALLY APPEAR CARRINGTON POINTE ESTATES, INC. BY DARRYL NORRIS, WHO ACKNOWLEDGED THE SIGNING OF THIS PLAT TO BE THEIR OWN FREE ACT AND DEED INDIVIDUALLY AND AS SUCH OFFICER FOR THE USES AND PURPOSES HEREIN EXPRESSED. IN WITNESS THEREOF I HAVE HEREUNTO SET MY HAND AND OFFICIAL SEAL THIS 27th DAY OF October, 2005.

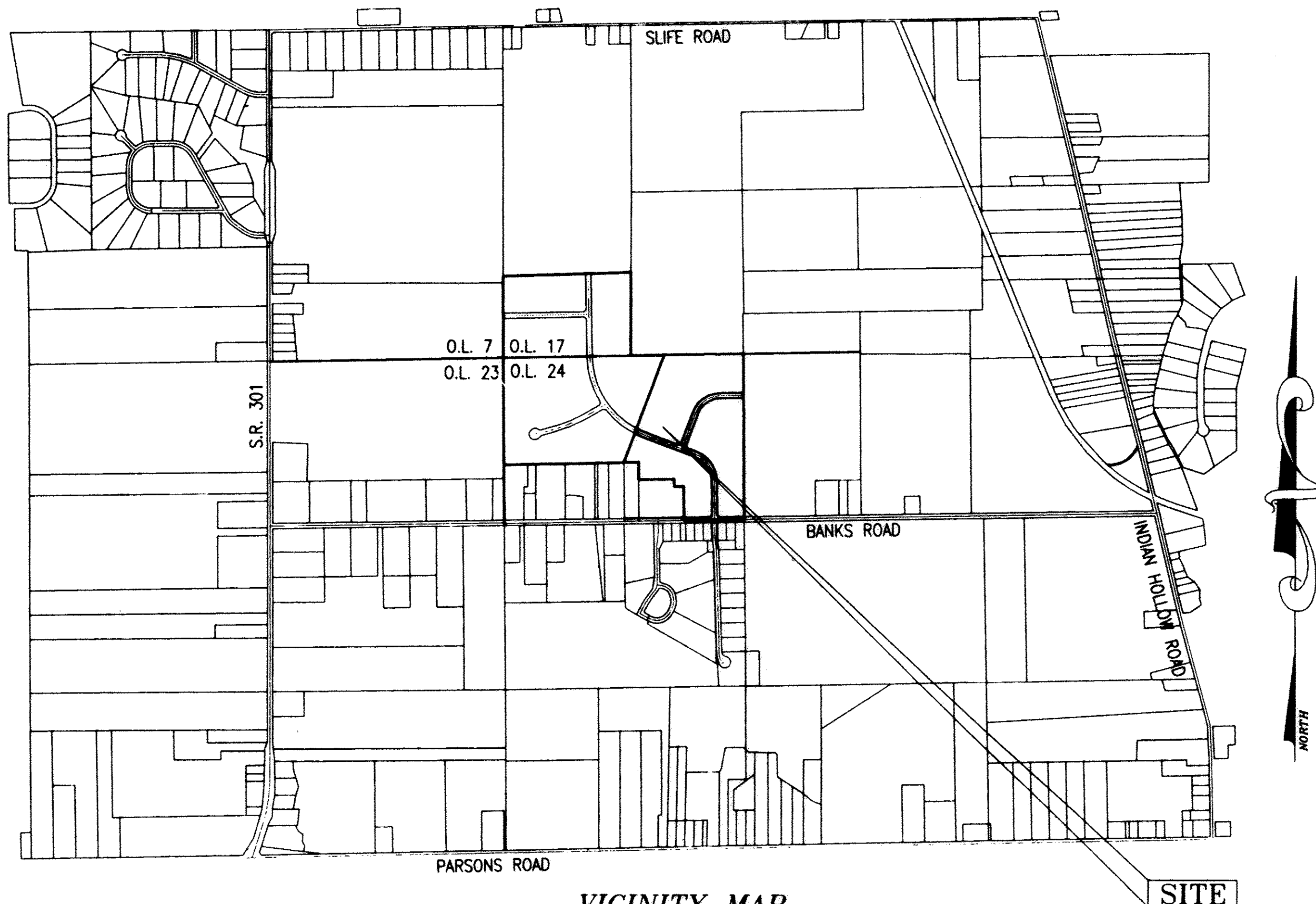
BY: [Signature] NOTARY PUBLIC

CHRISTENA ANDERSEN, Notary Public
For the State of Ohio
My commission expires Oct. 24, 2009



AREA IN LOTS = 41.7707 Ac.
AREA IN R.O.W. = 4.0458 Ac.
TOTAL AREA = 45.8165 Ac.

SITUATED IN THE TOWNSHIP OF CARLISLE, COUNTY OF LORAIN & STATE OF OHIO
& KNOWN AS BEING PART OF CARLISLE TOWNSHIP LOTS NO. 24.



VICINITY MAP
N.T.S.

OCT 27 2005
RECEIVED FOR RECORD
11:00 A.M. in PLAT RECORD
VOL. 92 JUDITH M. NEDWICK
PAGES 5 Lorain County Recorder
24, 25 + 26 inc 257 20
CALL: DARRYL NORRIS SELF 257 20
(440) 458-8000
RECORDER

TRANSFERRED
IN COMPLIANCE WITH SEC 319-201
OCT 27 2005
MARK R. STEWART
LORAIN COUNTY AUDITOR
AUDITOR

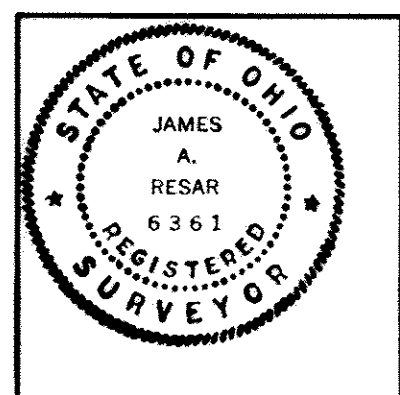
NO TRANSFER NECESSARY
MARK R. STEWART
LORAIN COUNTY AUDITOR
10-24-07 umn
DEPUTY

SURVEYORS CERTIFICATE

THIS IS TO CERTIFY THAT AT THE REQUEST OF THE OWNERS I HAVE SURVEYED AND PLATTED "CARRINGTON POINTE ESTATES SUBDIVISION No. 1" AS SHOWN HEREON AND CONTAINING 45.8165 ACRES OF LAND IN ORIGINAL LOT 24 OF CARLISLE TOWNSHIP, LORAIN COUNTY, OHIO. DIMENSIONS SHOWN ON THIS PLAT ARE IN FEET AND DECIMAL PARTS THEREOF. ALL BEARINGS SHOWN ARE TO AN ASSUMED MERIDIAN AND USED TO DESCRIBE ANGLES ONLY. PERMANENT MONUMENTS WERE FOUND OR SET AS DESCRIBED HEREON, ALL OF WHICH I CERTIFY TO BE CORRECT.

- IRON PIN SET
- IRON PIN FOUND
- MONUMENT BOX SET
- MONUMENT BOX FOUND

[Signature]
JAMES A. RESAR, P.E., P.S.
REGISTERED OHIO SURVEYOR NO. 6361



APPROVALS

- APPROVED THIS 10 DAY OF October 2005 [Signature] LORAIN COUNTY ENGINEER
- APPROVED THIS 10th DAY OF October 2005 [Signature] LORAIN COUNTY DISTRICT BOARD OF HEALTH
- APPROVED THIS 11 DAY OF October 2005 [Signature] CHAIRMAN, BOARD OF TOWNSHIP TRUSTEES
- APPROVED THIS 21st DAY OF October 2005 [Signature] DIRECTOR, LORAIN COUNTY PLANNING COMM.
- APPROVED THIS 11th DAY OF October 2005 [Signature] LORAIN COUNTY PROSECUTOR'S OFFICE
- APPROVED THIS 10 DAY OF October 2005 [Signature] LORAIN COUNTY SANITARY ENGINEER

UNDERGROUND EASEMENT

WE, THE OWNERS OF THE WITHIN PLATTED LANDS, DO HEREBY GRANT UNTO LORAIN-MEDINA RURAL ELECTRIC, ALLTEL COMMUNICATIONS & COMCAST, THEIR SUCCESSORS AND ASSIGNS, (HEREINAFTER REFERRED TO AS THE GRANTEEES) A PERMANENT RIGHT OF WAY AND EASEMENT TWELVE (12) FEET IN WIDTH UNDER, OVER AND THROUGH ALL SUBLOTS AND ALL LANDS SHOWN HEREON AND PARALLEL WITH AND CONTIGUOUS TO ALL STREET LINES TO CONSTRUCT, PLACE, OPERATE, MAINTAIN, REPAIR, RECONSTRUCT AND RELOCATE SUCH UNDERGROUND ELECTRIC AND COMMUNICATIONS, CABLES, DUCTS, CONDUITS, SURFACE OR BELOW GROUND MOUNTED TRANSFORMERS AND PEDESTALS, CONCRETE PADS AND OTHER FACILITIES AS ARE DEEMED NECESSARY OR CONVENIENT BY THE GRANTEEES FOR DISTRIBUTING AND TRANSMITTING ELECTRICITY AND COMMUNICATION SIGNALS, FOR PUBLIC AND PRIVATE USE AT SUCH LOCATIONS AS THE GRANTEEES MAY DETERMINE, UPON, WITHIN AND ACROSS SAID EASEMENT PREMISES. SAID EASEMENT RIGHTS SHALL INCLUDE THE RIGHT, WITHOUT LIABILITY THEREFORE, TO REMOVE ANY AND ALL FACILITIES NOT CONTEMPLATED IN THE RIGHTS CONVEYED TO GRANTEEES BY THIS EASEMENT GRANT WITHIN SAID EASEMENT PREMISES INCLUDING, BUT NOT LIMITED TO, IRRIGATION SYSTEMS, ELECTRONIC ANIMAL FENCING, TREES AND LANDSCAPING INCLUDING LAWNS, FLOWERS OR SHRUBBERY AND LANDSCAPE LIGHTNING WITHIN AND WITHOUT SAID EASEMENTS PREMISES WHICH MAY INTERFERE WITH THE INSTALLATION, MAINTENANCE, REPAIR OR OPERATION OF SAID ELECTRIC AND COMMUNICATION FACILITIES, THE RIGHT TO INSTALL, REPAIR, AUGMENT AND MAINTAIN SERVICE CABLES OUTSIDE THE ABOVE DESCRIBED EASEMENT PREMISES, AND WITH THE RIGHT OF ACCESS, INGRESS AND EGRESS TO AND FROM ANY OF THE WITHIN DESCRIBED PREMISES FOR EXERCISING ANY OF THE PURPOSES OF THIS RIGHT OF WAY AND EASEMENT GRANT. ALL SUBLOTS AND ALL LANDS SHALL BE RESTRICTED TO UNDERGROUND UTILITY SERVICE.

[Signature] CARRINGTON POINTE ESTATES, INC.
BY: DARRYL NORRIS, PRESIDENT
[Signature] LORAIN-MEDINA RURAL ELECTRIC
[Signature] COMCAST
[Signature] ALLTEL COMMUNICATIONS

COLUMBIA GAS TRANSMISSION RIGHT OF WAY CROSSING

THIS PLAT DEFINES THE LIMITS OF COLUMBIA GAS TRANSMISSION RIGHT OF WAY ORIGINALLY RECORDED IN VOL. 527, PAGE 425. THE RIGHT OF WAY DEFINED HEREON SUPERSEDES ALL PREVIOUSLY RECORDED EASEMENTS OR RIGHTS OF WAY FOR THE PARCELS DEFINED IN THIS PLAT. ALL RIGHTS LISTED IN THE FOREMENTIONED DOCUMENT ARE STILL IN FULL EFFECT. THE PHYSICAL LIMITS OF THE RIGHT OF WAY IS THE ONLY CHANGE TO THE ORIGINAL DOCUMENT.

THIS PLAT DEFINES THE PERMANENT PHYSICAL LIMITS OF COLUMBIA GAS TRANSMISSION RIGHT OF WAY ORIGINALLY RECORDED IN VOL. 527, PAGE 425, AND AS REVISED BY PARTIAL RELEASE OF RIGHT OF WAY AGREEMENT RECORDED IN INSTRUMENT NO. 2007024346 OF LORAIN COUNTY RECORDS (COLLECTIVELY REFERRED TO AS "THE RIGHT OF WAY"). THE RIGHT OF WAY DEFINED HEREON SUPERSEDES ALL PREVIOUSLY RECORDED EASEMENTS OR RIGHTS OF WAY FOR THE PARCELS DEFINED IN THIS PLAT. ALL RIGHTS LISTED IN THE FOREMENTIONED DOCUMENTS ARE STILL IN FULL EFFECT. AS PROVIDED FOR IN EACH DOCUMENT.

CARRINGTON POINTE ESTATES - CARLISLE
RECORD PLAT

2005-03-07	REVISED DIMENSIONS	Prepared For	
2005-03-21	TRAIL EASEMENT	Darryl Norris, Carrington Pointe Estates, Inc	
2005-04-13	REVISIONS PER TOWNSHIP	170 Mallard Creek Run	
2007-10-16		Lagrange, OH, 44050	
Date	09-26-2005	Revision	440-458-8000 - 440-458-4580 FAX

J.A.R. Engineering & Surveying
24629 Detroit Road
Westlake, Ohio 44145
(440)871-8345 (440)871-6175 FAX

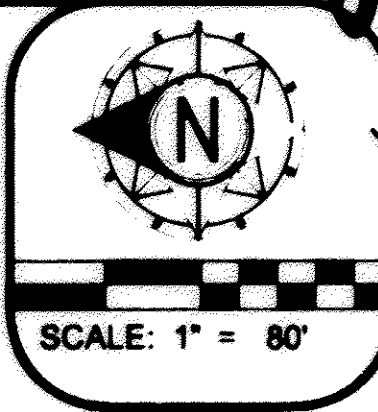
jar-engineering.com - info@jar-engineering.com

2ND RECORDING - REVISE COLUMBIA GAS TRANSMISSION EASEMENT LANGUAGE.

106943

106943

CARRINGTON POINTE ESTATES Subdivision No. 1



SITUATED IN THE TOWNSHIP OF CARLISLE, COUNTY OF LORAIN & STATE OF OHIO & KNOWN AS BEING PART OF CARLISLE TOWNSHIP LOTS NO. 24.

KENNETH JOSEPH & LINDA MARIE DIEDRICK
10-00-024-000-128 OR. VOL. 0076, PG. 66
1859.00' (REC. & MSD.)

Stone Fd
1741 North
of Centerline

TWIN CREEK FARMS
10-00-024-000-162
VOL. 1222 PAGE 0590

RONALD E. & DURETHA A. TAYLOR
10-00-024-000-011

RICHARD A. &
PAULA L. MORAN
10-00-024-000-056

ALLAN JONES
10-00-024-000-055

HIDDEN
LANE

JAMES & TAMARA
LYNSKY
10-00-024-000-054

VINCENT A. ECKERT
10-00-024-000-053

MARIA A. MILANO &
TIMOTHY P. STALLMAN
10-00-024-000-052

MARIA A. MILANO &
TIMOTHY P. STALLMAN
10-00-024-000-066

MARIA A. MILANO &
TIMOTHY P. STALLMAN
10-00-024-000-082

MARIA MICHITSCH
10-00-024-000-088
VOL. 0930 PAGE 0515

VALKYRIES
CIRCLE

WILLIAM K. FOX &
KATHLEEN NORTON
10-00-024-000-080

O.L. 17
O.L. 24

O.L. 17
O.L. 24

KENNETH JOSEPH & LINDA MARIE DIEDRICK
10-00-017-000-011
OR. VOL. 0076 PAGE 66

CHISELED "X" IN
ROCK FOUND

Stone Fd
1237.39'
494.76'

342.61'
20' UTILITY EASEMENT

20' UTILITY EASEMENT

20' UTILITY EASEMENT

20' UTILITY EASEMENT

20' UTILITY EASEMENT

20' UTILITY EASEMENT

20' UTILITY EASEMENT

200.51'

199.51'

1237.39'
494.76'

342.61'
20' UTILITY EASEMENT

20' UTILITY EASEMENT

20' UTILITY EASEMENT

20' UTILITY EASEMENT

20' UTILITY EASEMENT

20' UTILITY EASEMENT

20' UTILITY EASEMENT

200.51'

199.51'

1237.39'
494.76'

342.61'
20' UTILITY EASEMENT

20' UTILITY EASEMENT

20' UTILITY EASEMENT

20' UTILITY EASEMENT

20' UTILITY EASEMENT

20' UTILITY EASEMENT

20' UTILITY EASEMENT

200.51'

199.51'

1237.39'
494.76'

342.61'
20' UTILITY EASEMENT

20' UTILITY EASEMENT

20' UTILITY EASEMENT

20' UTILITY EASEMENT

20' UTILITY EASEMENT

20' UTILITY EASEMENT

20' UTILITY EASEMENT

200.51'

199.51'

1237.39'
494.76'

342.61'
20' UTILITY EASEMENT

20' UTILITY EASEMENT

20' UTILITY EASEMENT

20' UTILITY EASEMENT

20' UTILITY EASEMENT

20' UTILITY EASEMENT

20' UTILITY EASEMENT

200.51'

199.51'

1237.39'
494.76'

342.61'
20' UTILITY EASEMENT

20' UTILITY EASEMENT

20' UTILITY EASEMENT

20' UTILITY EASEMENT

20' UTILITY EASEMENT

20' UTILITY EASEMENT

20' UTILITY EASEMENT

200.51'

199.51'

1237.39'
494.76'

342.61'
20' UTILITY EASEMENT

20' UTILITY EASEMENT

20' UTILITY EASEMENT

20' UTILITY EASEMENT

20' UTILITY EASEMENT

20' UTILITY EASEMENT

20' UTILITY EASEMENT

200.51'

199.51'

1237.39'
494.76'

342.61'
20' UTILITY EASEMENT

20' UTILITY EASEMENT

20' UTILITY EASEMENT

20' UTILITY EASEMENT

20' UTILITY EASEMENT

20' UTILITY EASEMENT

20' UTILITY EASEMENT

200.51'

199.51'

1237.39'
494.76'

342.61'
20' UTILITY EASEMENT

20' UTILITY EASEMENT

20' UTILITY EASEMENT

20' UTILITY EASEMENT

20' UTILITY EASEMENT

20' UTILITY EASEMENT

20' UTILITY EASEMENT

200.51'

199.51'

1237.39'
494.76'

342.61'
20' UTILITY EASEMENT

20' UTILITY EASEMENT

20' UTILITY EASEMENT

20' UTILITY EASEMENT

20' UTILITY EASEMENT

20' UTILITY EASEMENT

20' UTILITY EASEMENT

200.51'

199.51'

1237.39'
494.76'

342.61'
20' UTILITY EASEMENT

20' UTILITY EASEMENT

20' UTILITY EASEMENT

20' UTILITY EASEMENT

20' UTILITY EASEMENT

20' UTILITY EASEMENT

20' UTILITY EASEMENT

200.51'

199.51'

1237.39'
494.76'

342.61'
20' UTILITY EASEMENT

20' UTILITY EASEMENT

20' UTILITY EASEMENT

20' UTILITY EASEMENT

20' UTILITY EASEMENT

20' UTILITY EASEMENT

20' UTILITY EASEMENT

200.51'

199.51'

1237.39'
494.76'

342.61'
20' UTILITY EASEMENT

20' UTILITY EASEMENT

20' UTILITY EASEMENT

20' UTILITY EASEMENT

20' UTILITY EASEMENT

20' UTILITY EASEMENT

20' UTILITY EASEMENT

200.51'

199.51'

1237.39'
494.76'

342.61'
20' UTILITY EASEMENT

20' UTILITY EASEMENT

20' UTILITY EASEMENT

20' UTILITY EASEMENT

20' UTILITY EASEMENT

20' UTILITY EASEMENT

20' UTILITY EASEMENT

200.51'

199.51'

1237.39'
494.76'

342.61'
20' UTILITY EASEMENT

20' UTILITY EASEMENT

20' UTILITY EASEMENT

20' UTILITY EASEMENT

20' UTILITY EASEMENT

20' UTILITY EASEMENT

20' UTILITY EASEMENT

200.51'

199.51'

1237.39'
494.76'

342.61'
20' UTILITY EASEMENT

20' UTILITY EASEMENT

20' UTILITY EASEMENT

20' UTILITY EASEMENT

20' UTILITY EASEMENT

20' UTILITY EASEMENT

20' UTILITY EASEMENT

200.51'

199.51'

1237.39'
494.76'

342.61'
20' UTILITY EASEMENT

20' UTILITY EASEMENT

20' UTILITY EASEMENT

20' UTILITY EASEMENT

20' UTILITY EASEMENT

20' UTILITY EASEMENT

20' UTILITY EASEMENT

200.51'

199.51'

1237.39'
494.76'

342.61'
20' UTILITY EASEMENT

20' UTILITY EASEMENT

20' UTILITY EASEMENT

20' UTILITY EASEMENT

20' UTILITY EASEMENT

20' UTILITY EASEMENT

20' UTILITY EASEMENT

200.51'

199.51'

1237.39'
494.76'

342.61'
20' UTILITY EASEMENT

20' UTILITY EASEMENT

20' UTILITY EASEMENT

20' UTILITY EASEMENT

20' UTILITY EASEMENT

20' UTILITY EASEMENT

20' UTILITY EASEMENT

200.51'

199.51'

1237.39'
494.76'

342.61'
20' UTILITY EASEMENT

20' UTILITY EASEMENT

20' UTILITY EASEMENT

20' UTILITY EASEMENT

20' UTILITY EASEMENT

20' UTILITY EASEMENT

20' UTILITY EASEMENT

200.51'

199.51'

1237.39'
494.76'

342.61'
20' UTILITY EASEMENT

20' UTILITY EASEMENT

20' UTILITY EASEMENT

20' UTILITY EASEMENT

20' UTILITY EASEMENT

20' UTILITY EASEMENT

20' UTILITY EASEMENT

200.51'

199.51'

1237.39'
494.76'

342.61'
20' UTILITY EASEMENT

20' UTILITY EASEMENT

20' UTILITY EASEMENT

20' UTILITY EASEMENT

20' UTILITY EASEMENT

20' UTILITY EASEMENT

20' UTILITY EASEMENT

200.51'

199.51'

1237.39'
494.76'

342.61'
20' UTILITY EASEMENT

20' UTILITY EASEMENT

20' UTILITY EASEMENT

20' UTILITY EASEMENT

20' UTILITY EASEMENT

20' UTILITY EASEMENT

20' UTILITY EASEMENT

200.51'

199.51'

1237.39'
494.76'

342.61'
20' UTILITY EASEMENT

20' UTILITY EASEMENT

20' UTILITY EASEMENT

20' UTILITY EASEMENT

20' UTILITY EASEMENT

20' UTILITY EASEMENT

20' UTILITY EASEMENT

200.51'

199.51'

1237.39'
494.76'

342.61'
20' UTILITY EASEMENT

20' UTILITY EASEMENT

20' UTILITY EASEMENT

20' UTILITY EASEMENT

20' UTILITY EASEMENT

20' UTILITY EASEMENT

20' UTILITY EASEMENT

200.51'

199.51'

1237.39'
494.76'