

CERTIFICATION

THIS IS TO CERTIFY THAT THE ATTACHED DRAWINGS CORRECTLY REPRESENT THE BUILDINGS AS CONSTRUCTED AND THAT THERE ARE NO ENCRoACHMENTS ON ADJACENT PROPERTIES.

JTS
 JAMES T. SAYLER, P.E.
 PROFESSIONAL ENGINEER NO. E-52385



JTS
 JAMES T. SAYLER
 PROFESSIONAL SURVEYOR NO. S-7425



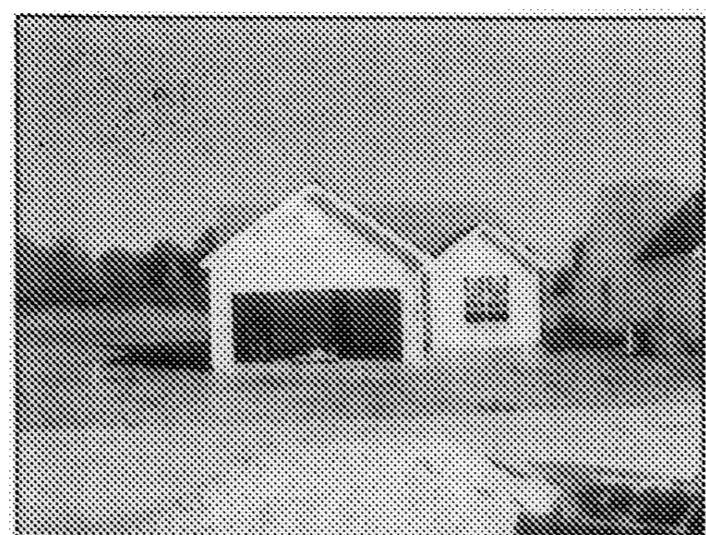
NOTE:

LIMITED COMMON AREAS INCLUDE THE LAND WITHIN 3 FEET FROM THE FOUNDATION AND PATIOS/DECKS/PORCHES/SUNROOMS OF EACH UNIT.

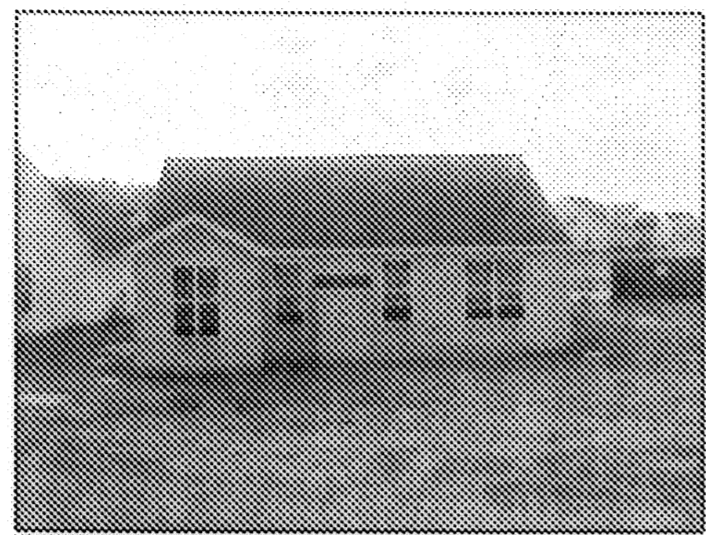
CONDOMINIUM PHASE ACREAGES:

PHASE 1, 1 PARCEL = 2.6402 AC.
 PHASE 2, 6 PARCELS = 0.9492 AC.
 PHASE 3, 3 PARCELS = 0.7361 AC.
 PHASE 4, 4 PARCELS = 2.1426 AC.
 PHASE 5, 1 PARCEL = 0.3834 AC.
 PHASE 6, 3 PARCELS = 0.7185 AC.
 PHASE 7, 3 PARCELS = 2.2202 AC.
 PHASE 8, 3 PARCELS = 0.4766 AC.
 PHASE 9, 1 PARCEL = 0.1673 AC.
 TOTAL TO DATE = 9.9575 AC.

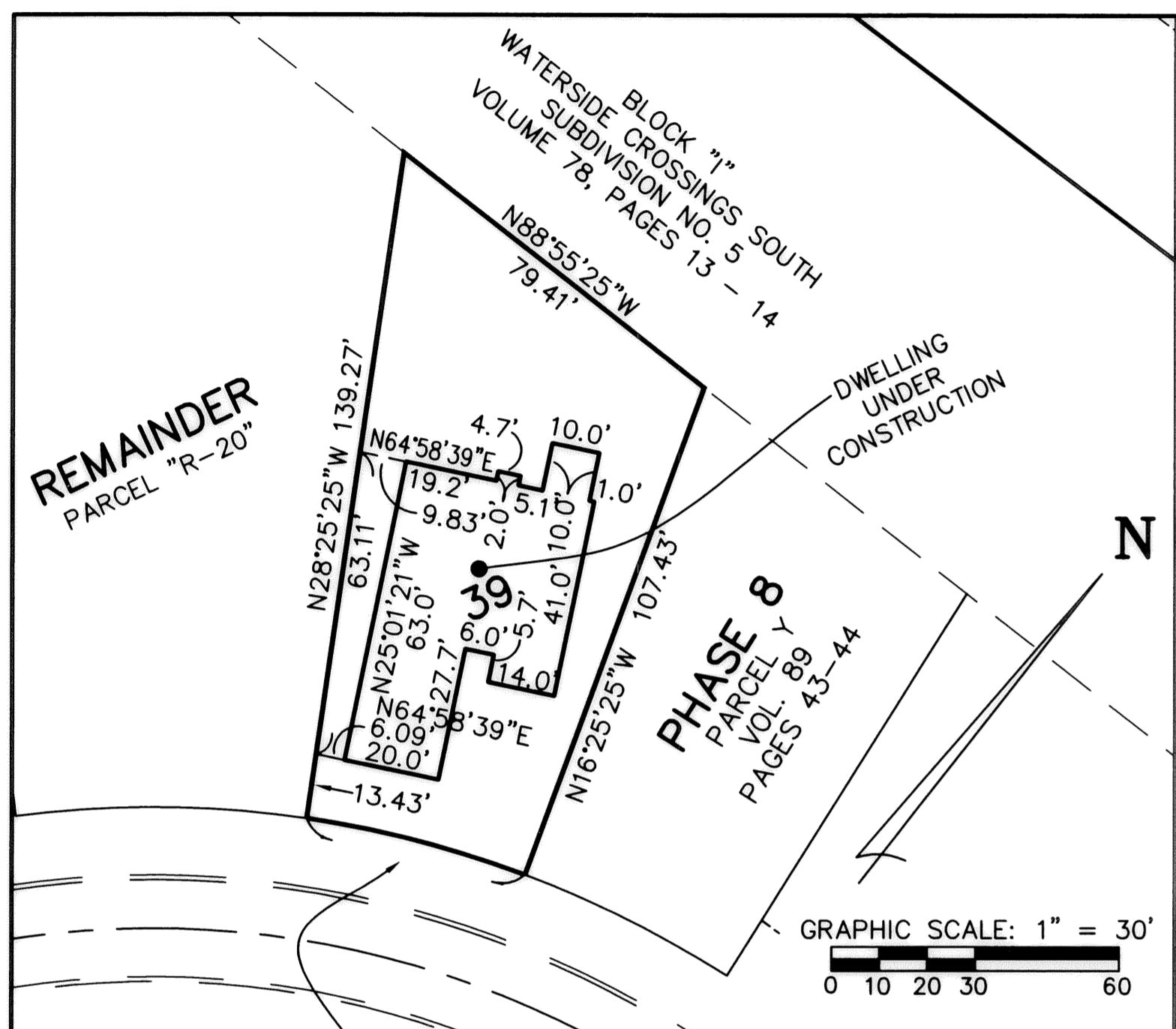
SUM OF REMAINDERS = 3.7404 AC.
 TOTAL PROJECT = 14.1745 AC.



UNIT 39 FRONT



UNIT 39 REAR



R=225.00
 Δ=12°00'00"
 L=47.12
 C=47.04
 N67°34'35"E
 T=23.65

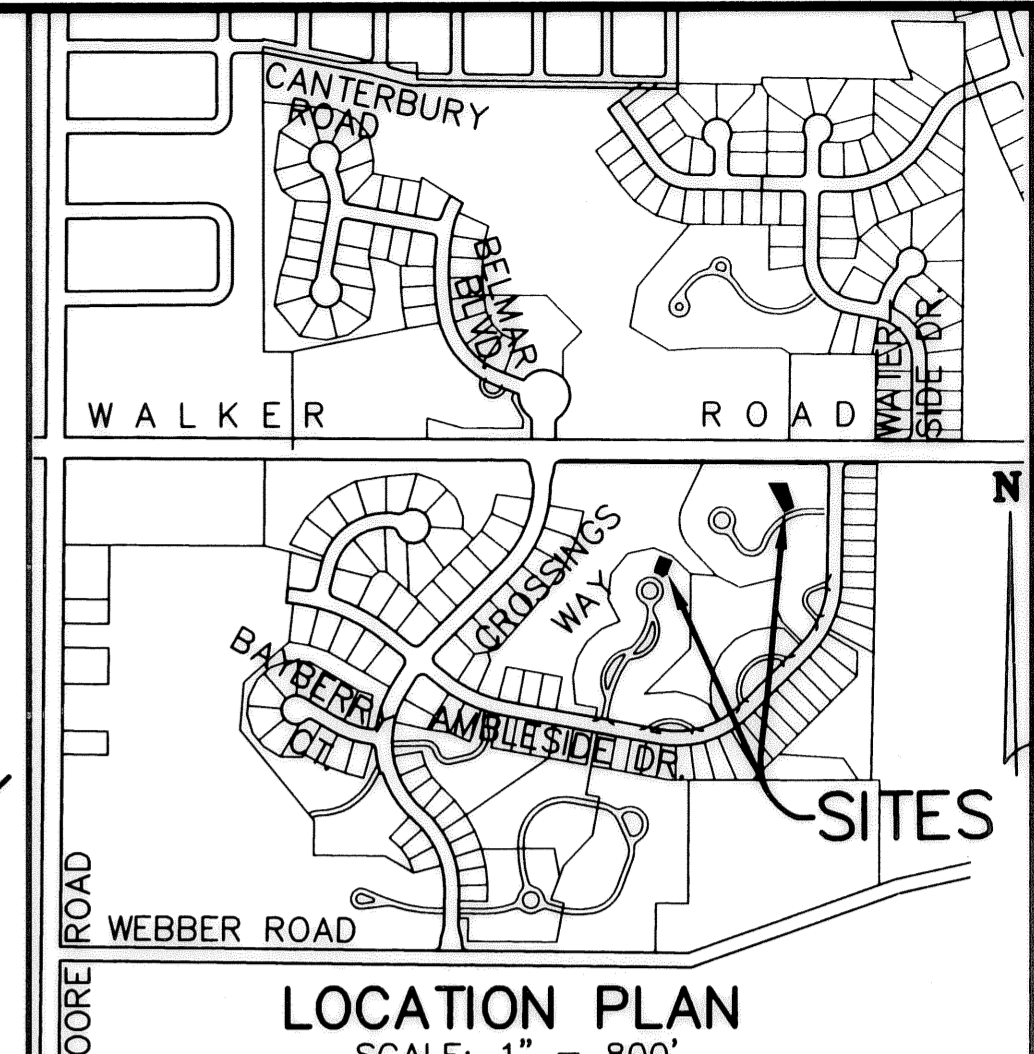
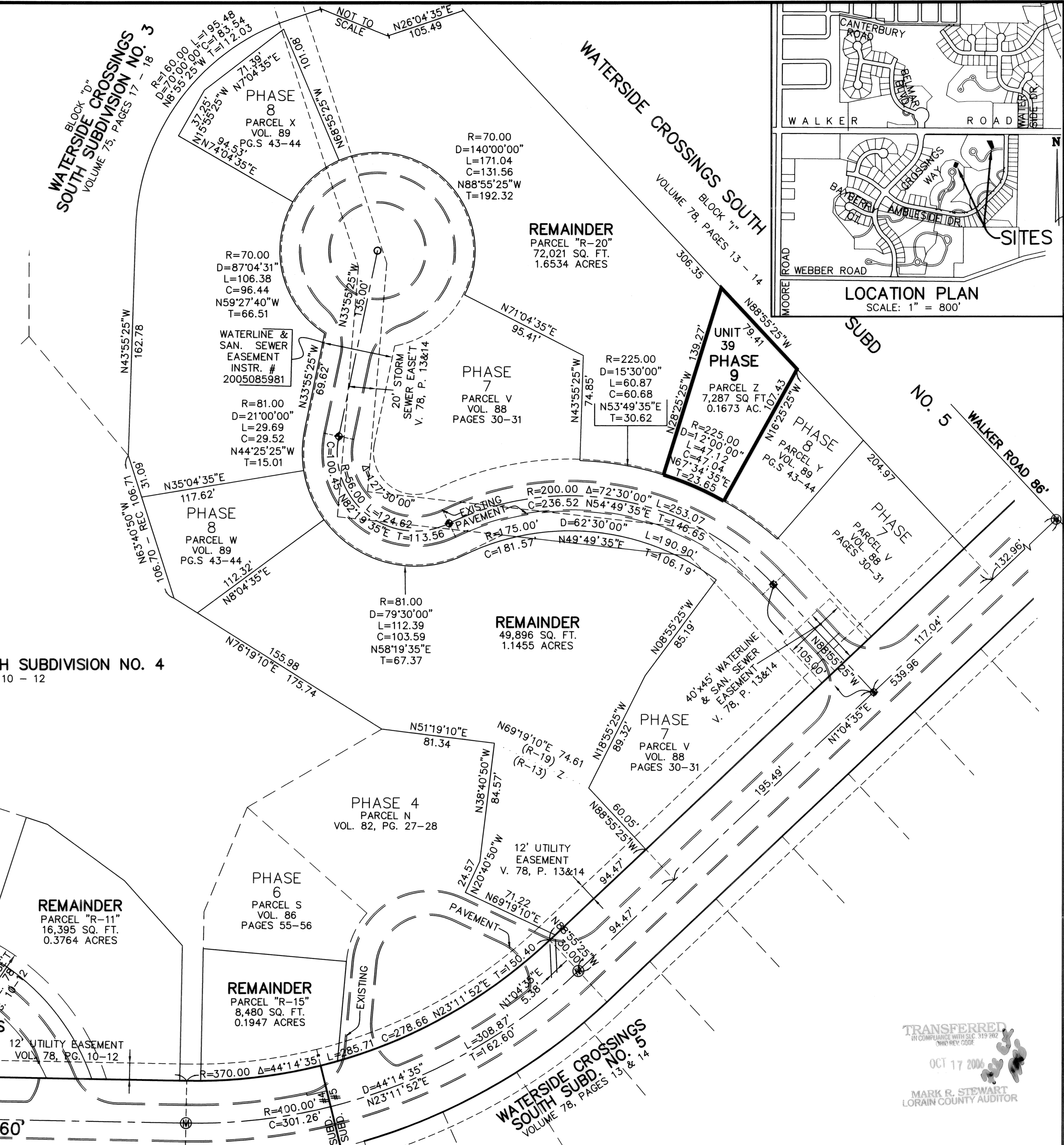
LEGEND:

- ⊙ DENOTES 5/8" CAPPED (REITZ ENG.) IRON PIN IN MONUMENT BOX USED.
- DENOTES 5/8" CAPPED (REITZ ENG.) IRON PIN FD. & USED.
- ◆ DENOTES 1/4" DRILL HOLE USED

BASED ON WATERSIDE CROSSINGS SOUTH PLAT BEARINGS



WATERSIDE CROSSINGS SOUTH SUBDIVISION NO. 4
 VOLUME 78, PAGES 10 - 12



REVISIONS	DATE	DESCRIPTION
1	10/10/2006	REMOVED UNIT 12 REVISION FROM PLAT & MADE 1 SHEET

VILLAGE AT WATERSIDE CROSSINGS SOUTH NO. 2 CONDOMINIUM PH. 9
 BEING PART OF ORIG. AVON TWP. SECTION 8
 CITY OF AVON LAKE, LORAIN COUNTY, OH

THE HENRY G. REITZ ENGINEERING COMPANY
 4214 ROCKY RIVER DRIVE
 CLEVELAND, OHIO 44135
 PHONE: (216) 251-3033

1 / 1
 SEPTEMBER 2006

TRANSFERRED
 OCT 17 2006
 MARK R. STEWART
 LORAIN COUNTY AUDITOR