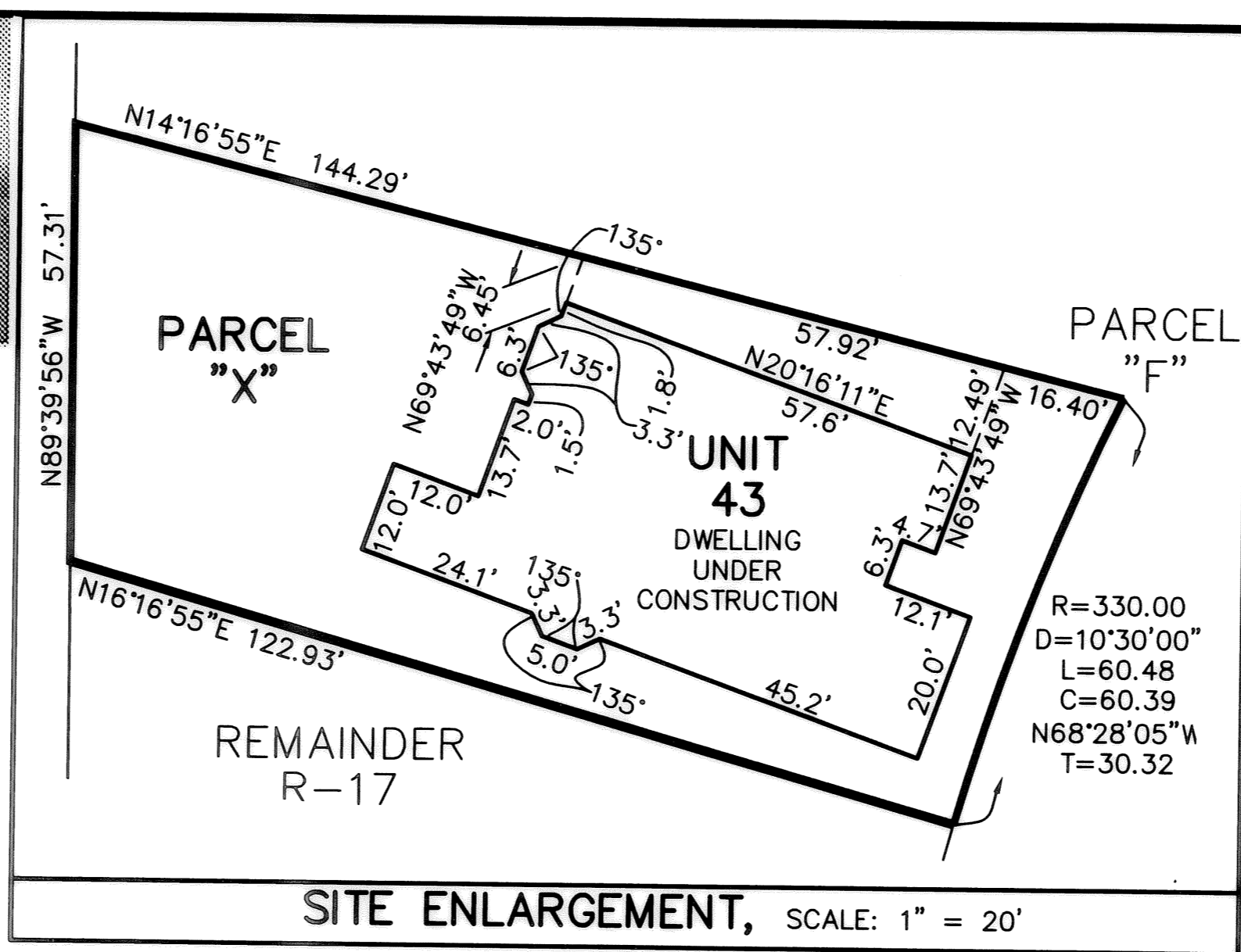


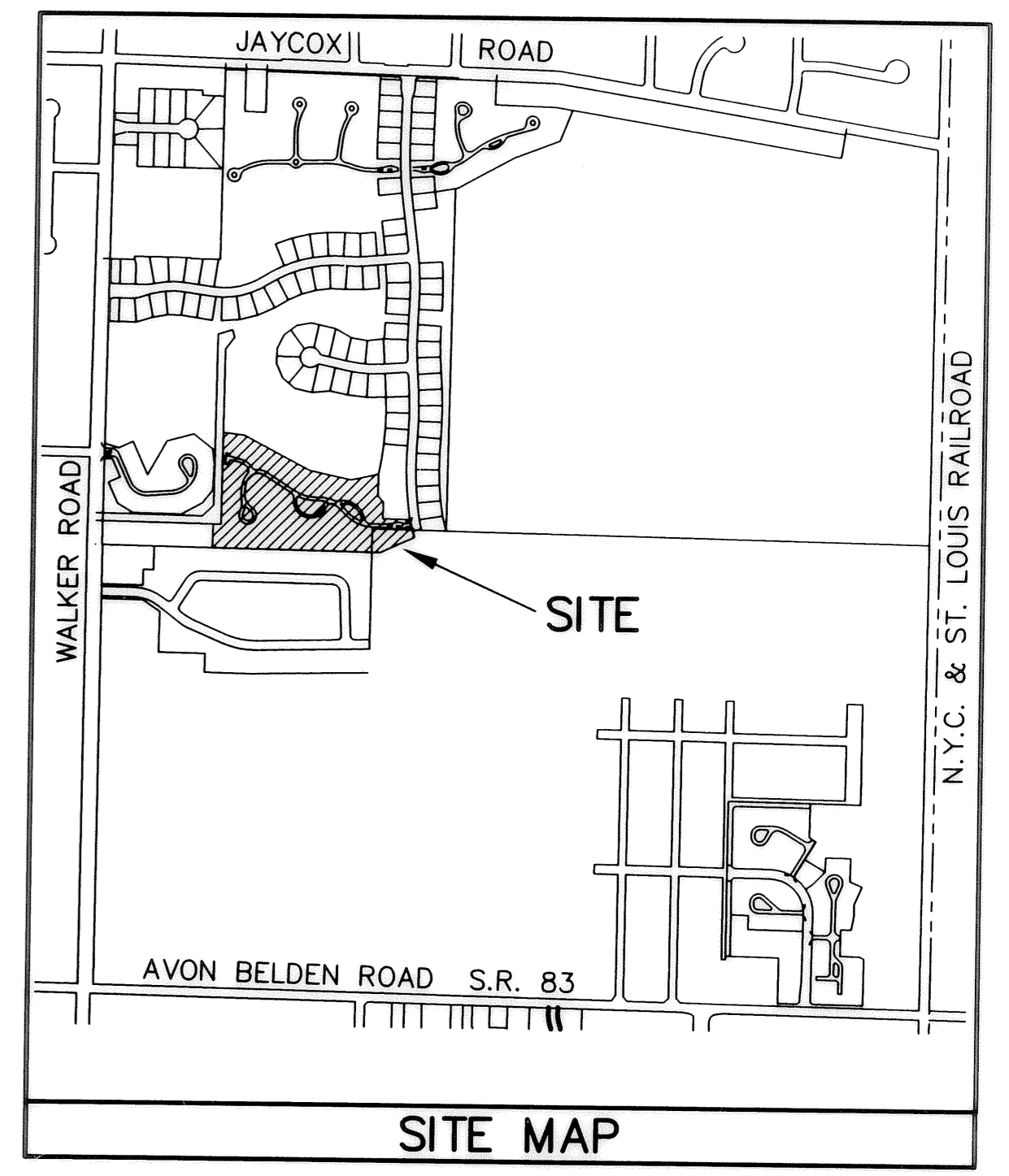


UNIT 43 FRONT UNIT 43 REAR

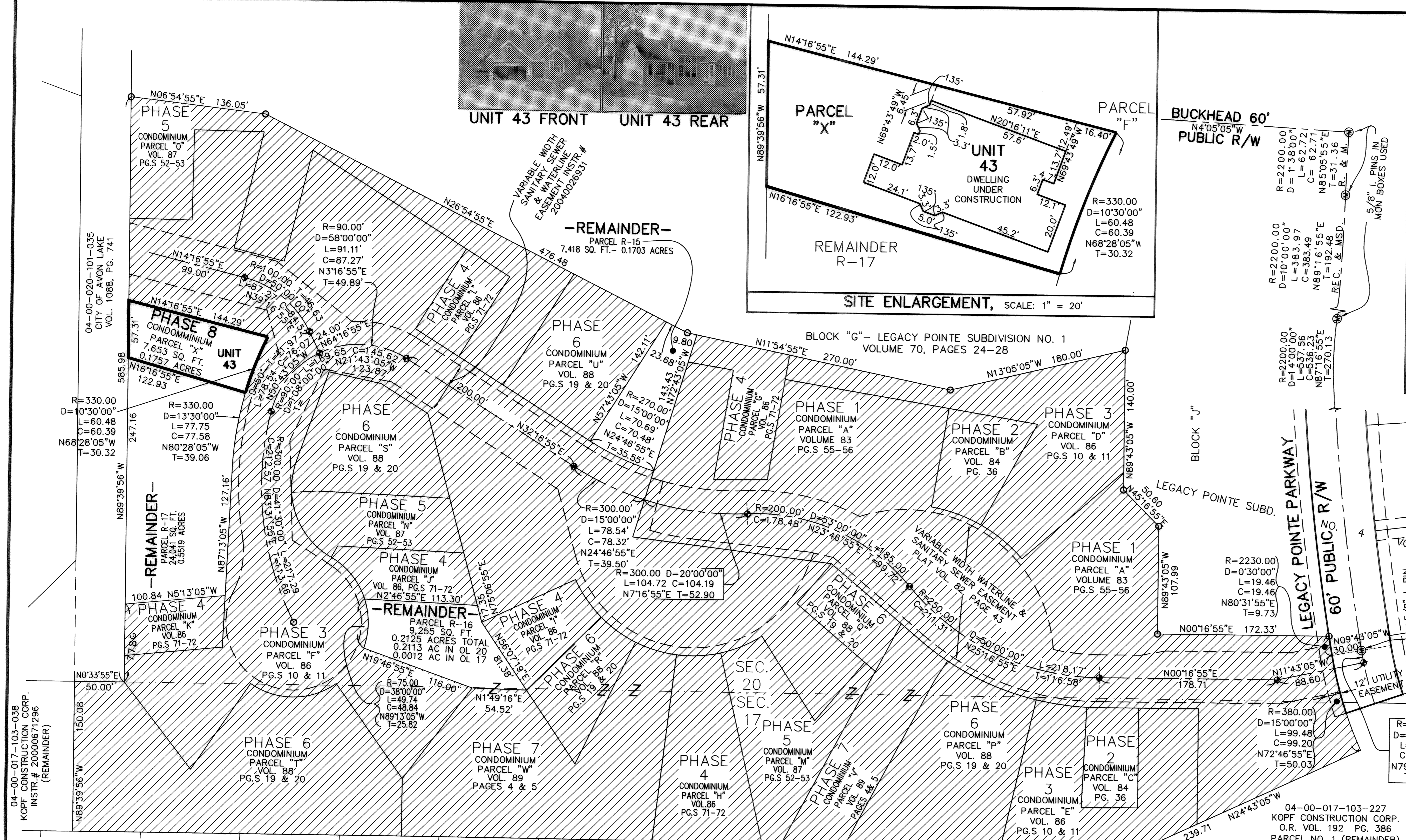


SITE ENLARGEMENT, SCALE: 1" = 20'

BUCKHEAD 60'
N4°05'05"W
PUBLIC R/W

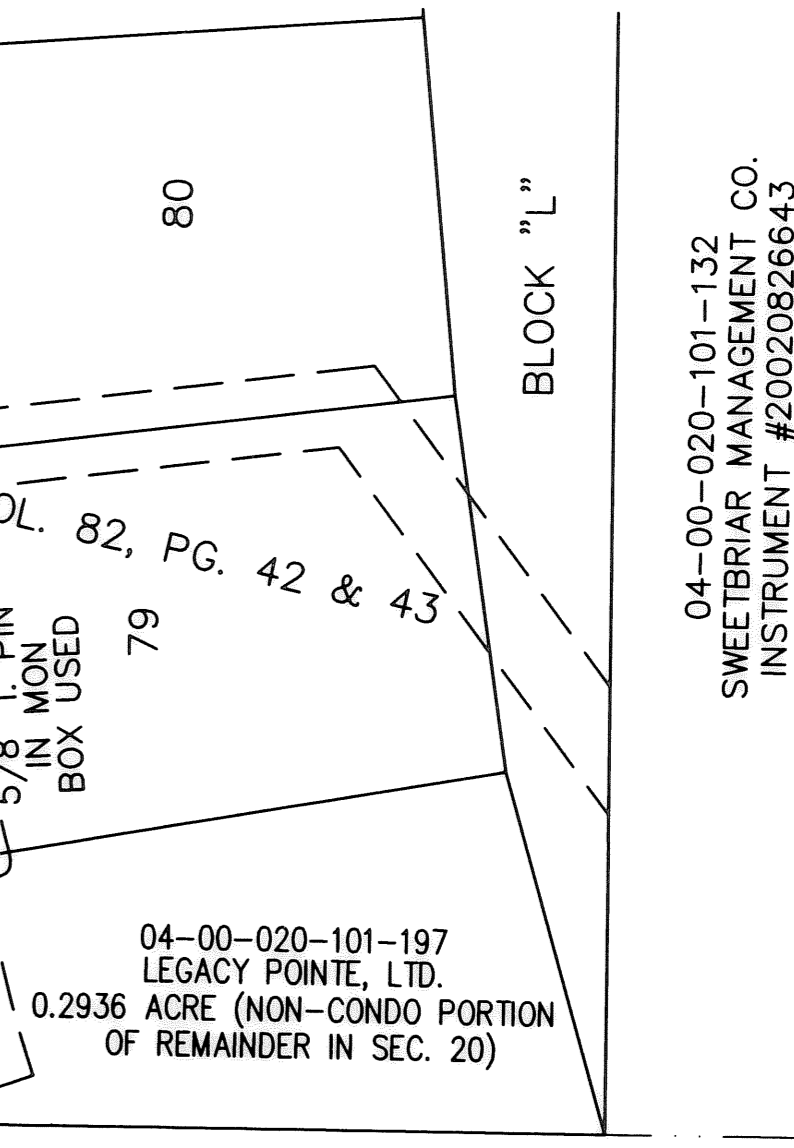


SITE MAP



BLOCK "G" - LEGACY POINTE SUBDIVISION NO. 1
VOLUME 70, PAGES 24-28

BLOCK "J"
LEGACY POINTE SUBD.
LEGACY POINTE PARKWAY
60' PUBLIC R/W



04-00-020-101-132
SWEETBRIAR MANAGEMENT CO.
INSTRUMENT #20020826643

04-00-020-101-197
LEGACY POINTE, LTD.
0.2936 ACRE (NON-CONDO PORTION
OF REMAINDER IN SEC. 20)

TRANSFERRED
OCT 10 2006
MARK R. STEWART
LORAIN COUNTY AUDITOR

CERTIFICATION

THIS IS TO CERTIFY THAT THE ATTACHED DRAWINGS CORRECTLY REPRESENT THE BUILDINGS AS CONSTRUCTED AND THAT THERE ARE NO ENCROACHMENTS ON ADJACENT PROPERTIES.

JAMES T. SAYLER, P.E.
PROFESSIONAL ENGINEER NO. E-52385

JAMES T. SAYLER
PROFESSIONAL SURVEYOR NO. S-7425

NOTE:
LIMITED COMMON ELEMENTS INCLUDE THE 3 FEET FROM THE FOUNDATION AND PATIOS/DECKS/PORCHES/SUNROOMS OF EACH UNIT. AND LAND 12 FEET OFF OF MAIN REAR WALL FOR CONSTRUCTION OF A DECK OR PATIO

ACREAGE BREAKDOWN:

TOTAL SITE	622,725 SQ. FT.	14.2958 ACRES
PHASE ONE	112,862 SQ. FT.	2.5910 ACRES
PHASE TWO	12,867 SQ. FT.	0.2954 ACRES
PHASE THREE	201,632 SQ. FT.	4.6288 ACRES
PHASE FOUR	45,514 SQ. FT.	1.0449 ACRES
PHASE FIVE	46,810 SQ. FT.	1.0746 ACRES
PHASE SIX	102,882 SQ. FT.	2.3619 ACRES
PHASE SEVEN	47,794 SQ. FT.	1.0972 ACRES
PHASE EIGHT	7,653 SQ. FT.	0.1757 ACRES
REMAINDERS	40,714 SQ. FT.	0.9347 ACRES

- LEGEND:**
- ⊙ DENOTES 5/8" CAPPED (REITZ ENG.) IRON PIN IN MONUMENT BOX USED.
 - DENOTES 5/8" CAPPED (REITZ ENG.) IRON PIN USED.
 - ⦿ DENOTES 1/4" DRILL HOLE USED

BASED ON LEGACY POINTE SUBD. PLATS

GRAPHIC SCALE: 1" = 50'
0 25 50 100

REVISIONS	

LEGACY POINTE CONDOMINIUM NO. 3 PH 8
OF PART OF ORIGINAL AVON TWP. SEC #17 & #20
CITY OF AVON LAKE, COUNTY OF LORAIN, OHIO

THE HENRY G. REITZ ENGINEERING COMPANY
4214 ROCKY RIVER DRIVE
CLEVELAND, OHIO 44135
PHONE: (216) 251-3033

1
1
SEPTEMBER 2006

TAX MAP DEPT COPY #06-01036