

AUDITOR'S REVISED PLAT

OF SUBLot NOS. 28-32 AND BLOCKS "G" AND "H" IN

STONEY BROOK PLACE SUBDIVISION NO. 2 P.V. 89 PG'S. 33-34 *

PART OF ORIGINAL ELYRIA TOWNSHIP LOT NO. 12, BRACE TRACT
CITY OF ELYRIA, COUNTY OF LORAIN, STATE OF OHIO

* DESIGNATED HEREIN AS SUBLot NOS. 61-65 & AND BLOCKS "I" & "J"

COUNTY AUDITOR'S CERTIFICATE

COUNTY OF LORAIN }
STATE OF OHIO } SS

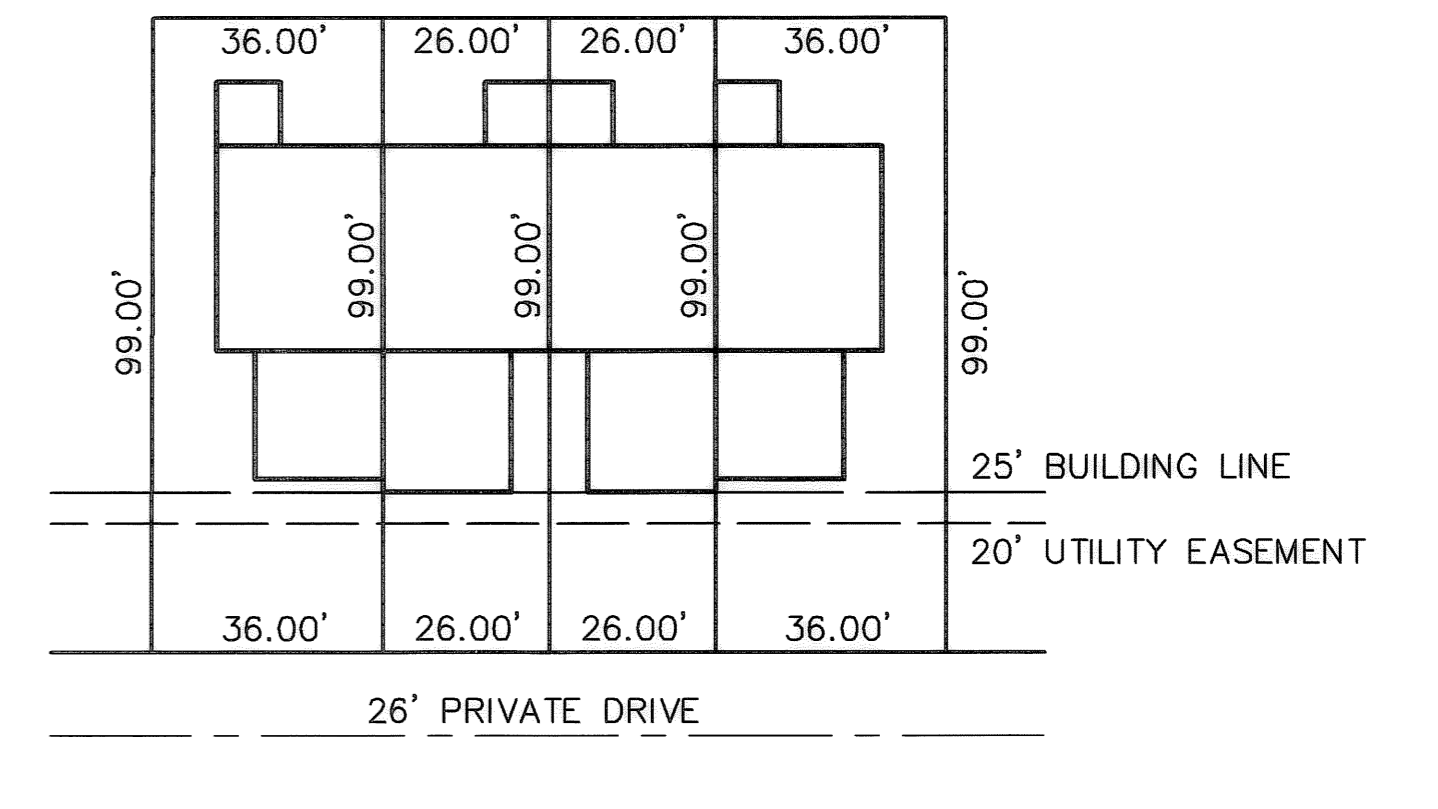
I, MARK R. STEWART, THE DULY ELECTED AND QUALIFIED COUNTY AUDITOR OF SAID COUNTY AND STATE, DO HEREBY CERTIFY THAT I HAVE CAUSED TO BE MADE, THIS FOREGOING PLAT OF A PART OF ELYRIA TOWNSHIP ORIGINAL LOT NO 12, BRACE TRACT, NOW IN THE CITY OF ELYRIA, COUNTY OF LORAIN, AND STATE OF OHIO IN ACCORDANCE WITH THE PROVISIONS OF REVISED SECTION 711 OF THE OHIO REVISED CODE. SAID PLAT TO BE KNOWN AS AND DESIGNATED AS REVISED SUBLots 28-32 & BLOCKS "G" AND "H" IN THE STONEY BROOK PLACE SUBDIVISION NO. 2 HEREIN DESIGNATED AS SUBLots 61-65 AND BLOCKS "I" AND "J" RESPECTIVELY. THIS ACTION HAVING BECOME NECESSARY OWING TO THE DEVELOPER'S RELOCATION OF THE PROPOSED BUILDING TO BE SITUATED ON SUBJECT SUBLots.

Mark R. Stewart 7-21-06
MARK R. STEWART DATE
AUDITOR OF LORAIN COUNTY



AREA MAP - NO SCALE

TYPICAL LOT & BUILDING DETAIL



SURVEYOR'S CERTIFICATE

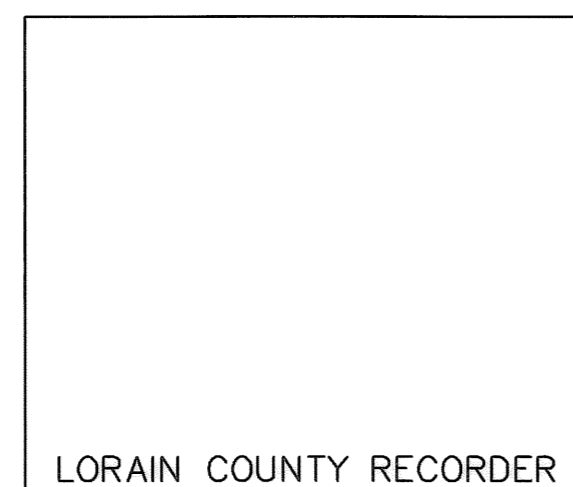
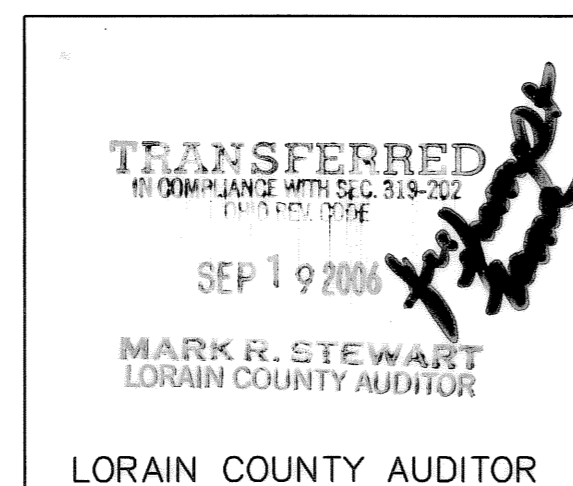
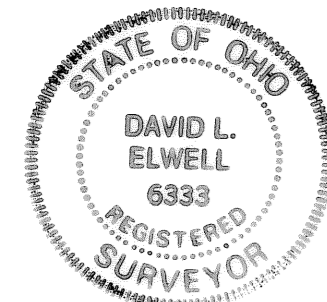
THIS IS TO CERTIFY THAT AT THE REQUEST OF MARK R. STEWART, AUDITOR OF LORAIN COUNTY, AND PURSUANT TO REVISED SECTION 711 OF THE OHIO REVISED CODE, WE HAVE PREPARED THE ABOVE PLAT OF REVISED SUBLots 28-32 & BLOCKS "G" AND "H" IN THE STONEY BROOK PLACE SUBDIVISION NO. 2 HEREIN DESIGNATED AS SUBLots 61-65 AND BLOCK "I" AND "J" RESPECTIVELY. SITUATED IN ELYRIA TOWNSHIP ORIGINAL LOT 12, BRACE TRACT, NOW IN THE CITY OF ELYRIA, COUNTY OF LORAIN, AND STATE OF OHIO. THE PLAT SHOWN HEREON WAS COMPILED FROM THE ORIGINAL PLAT OF STONEY BROOK PLACE SUBDIVISION NO. 2 AS RECORDED IN PLAT VOLUME 89 PAGES 33 AND 34.

ACREAGE CONTAINED WITHIN THE LOTS AS SHOWN WITHIN THE HEAVY LINE IS 1.5816 ACRES.

THIS IS TO CERTIFY THAT SAID SUBLots ARE TO BE REVISED AS SHOWN BY THE TRANSFER AND RECORDING OF THE REVISED PLAT.

KS ASSOCIATES, INC.
ENGINEERS & SURVEYORS
260 BURNS ROAD, SUITE 100 ELYRIA, OHIO 44035

BY: *David L. Elwell* 7-14-06
DAVID L. ELWELL, REG. SURVEYOR NO. 6333 DATE



SHEET INDEX

TITLE SHEET 1
SUBDIVISION 2

REVISED PLAT ACREAGE

AREA IN LOTS 61-65 0.3380 AC.
AREA IN BLOCKS "I" & "J" 1.2436 AC.
TOTAL 1.5816 AC.

ORIGINAL PLAT ACREAGE

AREA IN LOTS 28-32 0.3372 AC.
AREA IN BLOCKS "G" & "H" 1.2444 AC.
TOTAL 1.5816 AC.

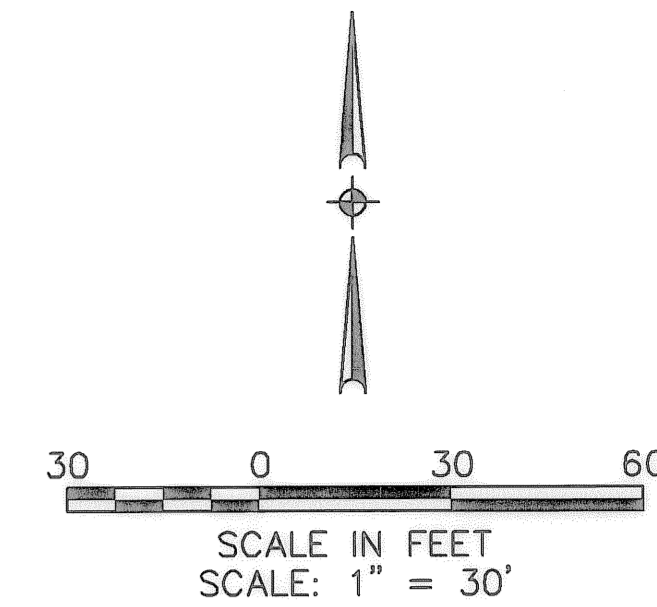
CURVE TABLE						
CURVE	LENGTH	RADIUS	TANGENT	DELTA	CHORD	BEARING
C1	60.27	87.00	31.40	39°41'37"	59.07	S70°28'09"E
C2	13.24	15.00	7.09	50°34'09"	12.81	S25°20'15"E
C3	23.49	15.00	14.93	89°44'14"	21.16	N44°48'56"E
C4	7.96	87.00	3.98	5°14'42"	7.96	N87°41'36"W
C5	23.56	15.00	15.00	90°00'00"	21.21	S44°56'49"W
C6	23.56	15.00	15.00	90°00'00"	21.21	N45°03'11"W
C7	22.94	15.00	14.39	87°37'26"	20.77	S46°30'14"E
C8	24.18	15.00	15.64	92°22'34"	21.65	S43°29'46"W
C9	24.33	15.00	15.79	92°56'00"	21.75	S43°46'30"W
C10	22.94	15.00	14.39	87°37'25"	20.77	S46°30'13"E
C11	24.18	15.00	15.64	92°22'35"	21.65	N43°29'47"E
C12	44.60	100.00	22.68	25°33'16"	44.23	N77°32'19"W
C13	0.26	15.00	0.13	1°00'12"	0.26	S02°11'24"E
C14	23.92	15.00	15.36	91°22'23"	21.47	S43°59'53"W

DATE	DATE	DESCRIPTION	BY
6-9-2006			

KS
KS ASSOCIATES
KS Associates, Inc.
260 Burns Road, Suite 100
Elyria, OH 44035
P 440 365 4730
F 440 365 4790
www.ksassociates.com

AUDITOR'S REVISED PLAT OF
STONEY BROOK PLACE
SUBDIVISION NO. 2
OF PART OF
ORIGINAL ELYRIA TOWNSHIP LOT NO. 12, BRACE TRACT
CITY OF ELYRIA COUNTY OF LORAIN STATE OF OHIO

SHEET
1
OF
2
JOB NO.
04200



06-22-015-102-012
 ETHEL R. BRINE TRUSTEE
 O.R.V. 1319 P. 7
 PCL. 1

BURRELL & DAY TR. O.L. 15
 BRACE TR. O.L. 12

LORAIN BLVD. AKA STATE ROUTE 57
 (OLD LORAIN STREET RAILWAY CO.)

SITE DATA

SETBACKS:
 FRONT = 25' TO PAVEMENT
 REAR = 30' MINIMUM FROM PROJECT BOUNDARY

SEE SHEET ONE FOR CURVE DATA TABLE.

DATE:	6-8-2006	DATE	DESCRIPTION	BY
DRAWN BY:	DAM/CWT			
CHK'D BY:				
DWG. NAME:	2-AUD-PLAT01			
PATH:	R:\04200\DDT\CONTROL			
F.B.:				

KS
 KS ASSOCIATES
 KS Associates, Inc.
 260 Burns Road, Suite 100
 Elyria, OH 44035
 P 440 365 4730
 F 440 365 4790
 www.ksassociates.com

**AUDITOR'S REVISED PLAT OF
 STONEY BROOK PLACE
 SUBDIVISION NO. 2**
 OF PART OF
 ORIGINAL ELYRIA TOWNSHIP LOT NO. 12, BRACE TRACT
 CITY OF ELYRIA COUNTY OF LORAIN STATE OF OHIO

SHEET
 2
 OF
 2
 JOB NO.
 04200

R:\04000\04200\DDT\control\dwg\2-AUD-PLAT01.dwg 7/14/2006 10:31:02 AM EDT