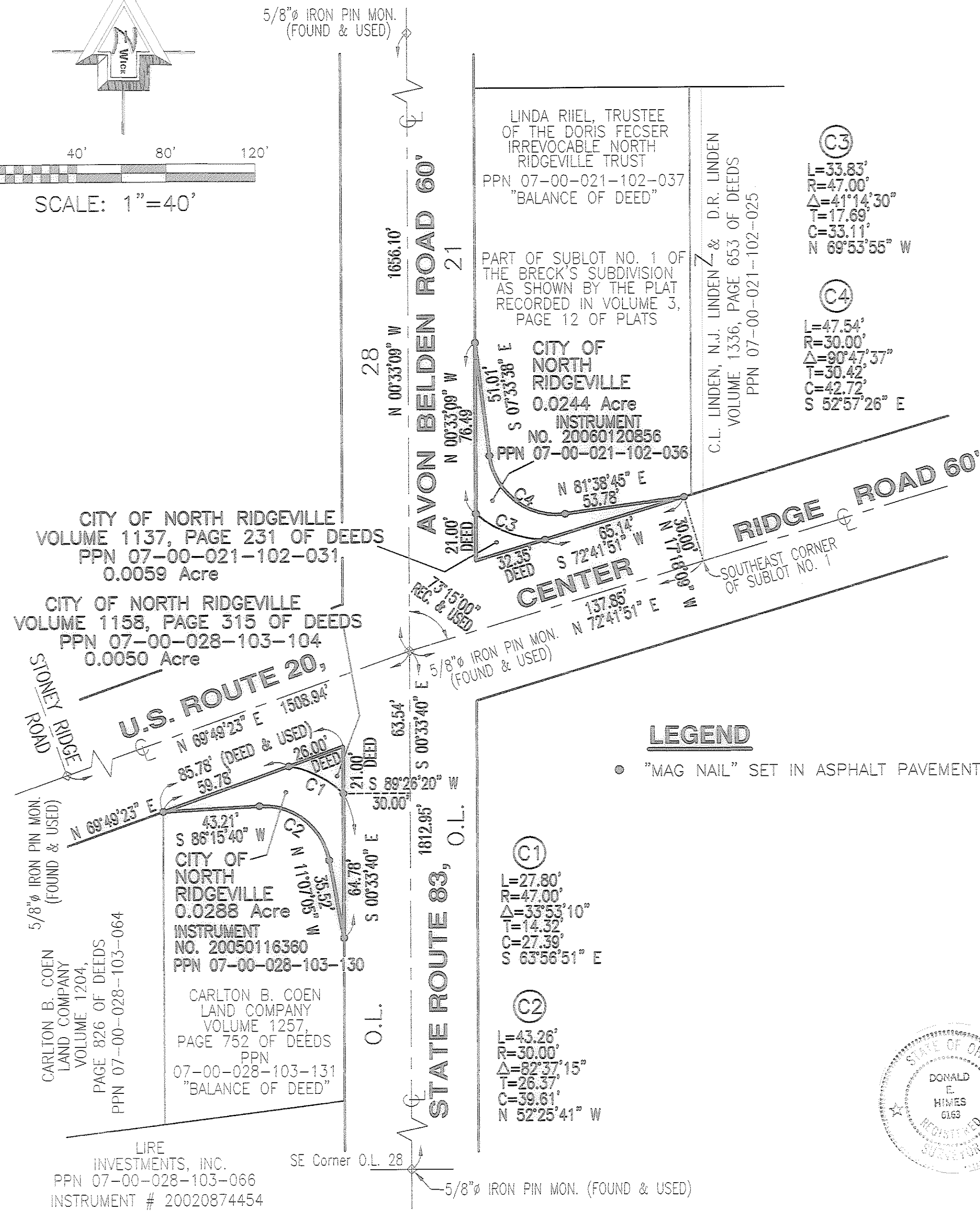
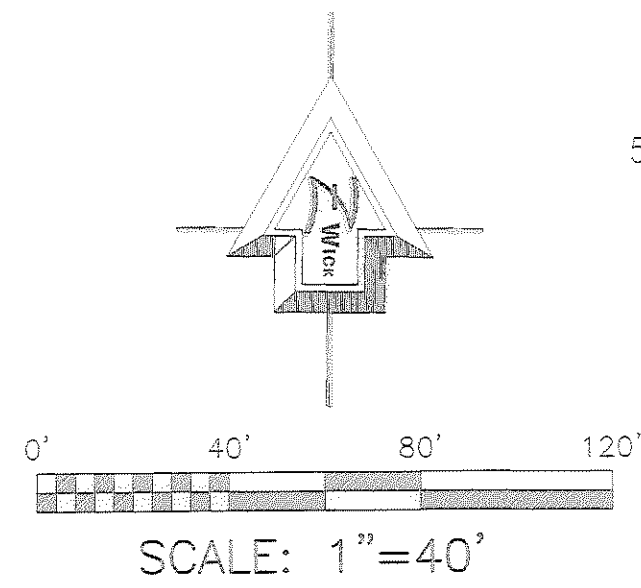


# DEDICATION PLAT OF INTERSECTION OF U.S. 20 & OHIO 83

KNOWN AS BEING A PART OF THE ORIGINAL RIDGEVILLE TOWNSHIP LOT NO. 21 & 28  
CITY OF NORTH RIDGEVILLE, LORAIN COUNTY, OHIO  
NOVEMBER 2005



### LEGEND

- "MAG NAIL" SET IN ASPHALT PAVEMENT

### APPROVALS

THIS PLAT APPROVED BY THE CITY OF NORTH RIDGEVILLE PLANNING COMMISSION.  
(OR OTHER RESPONSIBLE OFFICIAL)

THIS 30<sup>th</sup> DAY OF MARCH, 2006

*Janet Anderson*  
PLANNING SECRETARY  
(OR OTHER RESPONSIBLE OFFICIAL)

THIS PLAT APPROVED BY THE CITY OF NORTH RIDGEVILLE MAYOR.

THIS 31<sup>st</sup> DAY OF MARCH, 2006

*G. David Gillock*  
MAYOR OF THE CITY OF NORTH RIDGEVILLE

THIS PLAT APPROVED BY THE CITY OF NORTH RIDGEVILLE CITY ENGINEER.

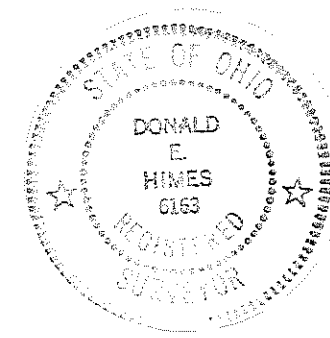
THIS 30<sup>th</sup> DAY OF MARCH, 2006

*Laura Luffick*  
CITY ENGINEER

### SURVEYOR'S CERTIFICATE

DISTANCES ARE GIVEN IN FEET AND DECIMAL PARTS THEREOF. NORTH DATUM USED IS THE BEARING OF RECORD OF U.S. ROUTE 20, CENTER RIDGE ROAD, AND IS FOR THE PURPOSE OF DESCRIBING ANGLES ONLY. PROPERTY CORNERS WERE FOUND OR SET AS INDICATED.

*Donald E. Himes*  
BY DONALD E. HIMES, OHIO Reg.No. 6163  
NOVEMBER 17, 2005



### OWNER'S ACCEPTANCE

THE CITY OF NORTH RIDGEVILLE, OWNER OF THE HEREON PLATTED LANDS, DOES HEREBY ACCEPT THIS PLAT AND DEDICATE THE SAME FOR PUBLIC USE.

- PPN 07-00-021-102-036
- PPN 07-00-021-102-031
- PPN 07-00-028-103-130
- PPN 07-00-028-103-104

*G. David Gillock*  
G. DAVID GILLOCK  
MAYOR OF THE CITY OF NORTH RIDGEVILLE

### NOTARIAL ACKNOWLEDGMENT

COUNTY OF LORAIN }  
STATE OF OHIO } S.S.

ACKNOWLEDGED BEFORE ME BY:  
G. DAVID GILLOCK, MAYOR OF  
THE CITY OF NORTH RIDGEVILLE  
ON ITS BEHALF.

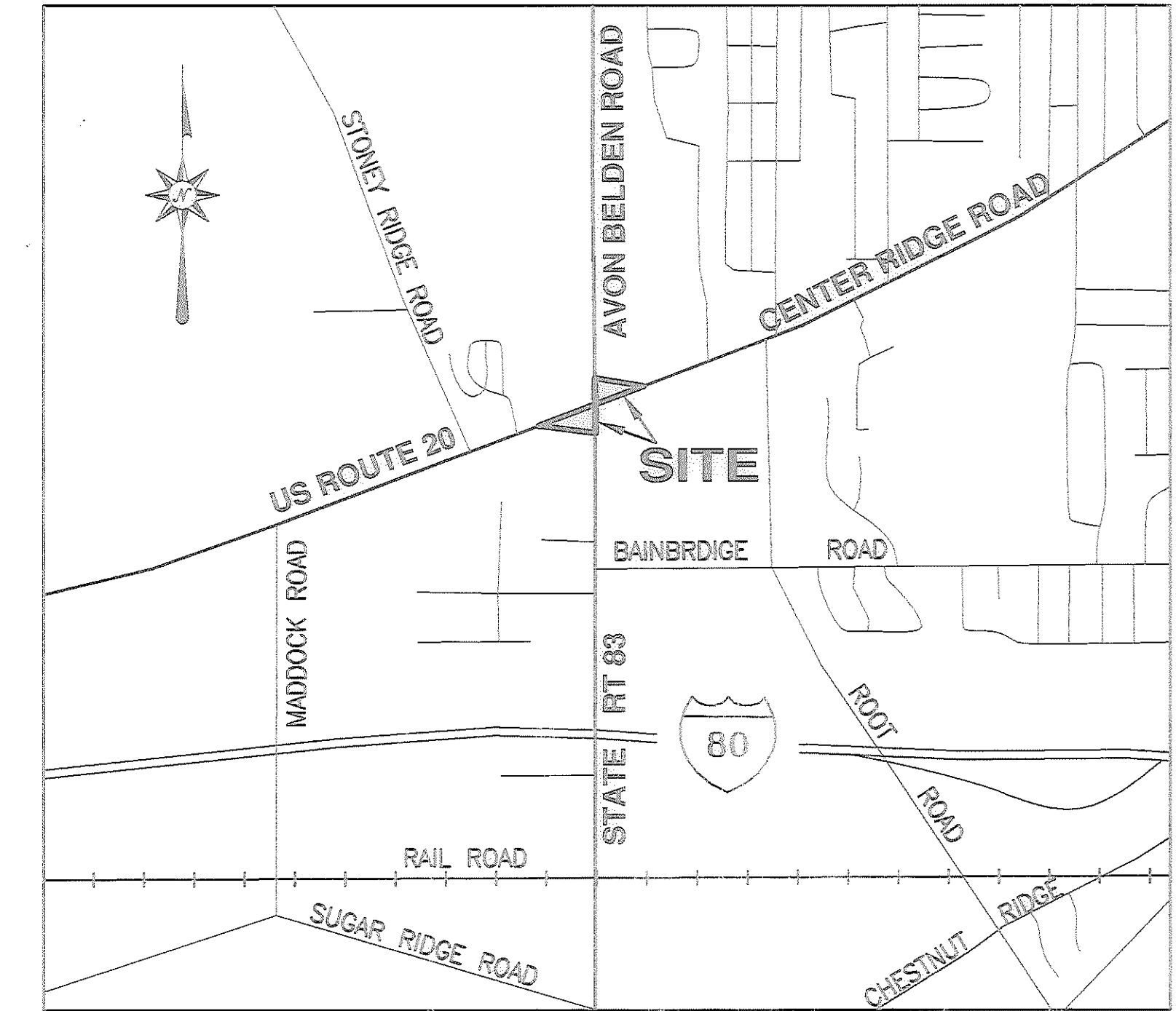
SIGNED AT North Ridgeville, OHIO

THIS 31<sup>st</sup> DAY OF MARCH, 2006

NOTARY PUBLIC *Sandra K. Hall*

MY COMM. EXPIRES Aug. 23, 2007

Sandra K. Hall  
Notary Public, State of Ohio  
My commission expires August 23, 2007  
Recorded in Lorain County



VICINITY MAP  
NO SCALE

TRANSFERRED  
IN COMPLIANCE WITH SEC. 319-202  
OHIO REV. CODE  
AUG 15 2006  
*See by MC*

MARK R. STEWART  
LORAIN COUNTY AUDITOR

© ZWICK ASSOCIATES, INC. engineers • surveyors • planners		
8750 STEARNS ROAD, OLMSTED TWP., OHIO 44138-1743		
PH:(440) 235-2729 FAX:(440) 235-0604 E-MAIL: zwick@eng.ohiocoxmail.com		
DESIGNED DEH	DRAWN CES	CHECKED DEH
DATE NOVEMBER 2005	REVISED	SCALE 1"=40'