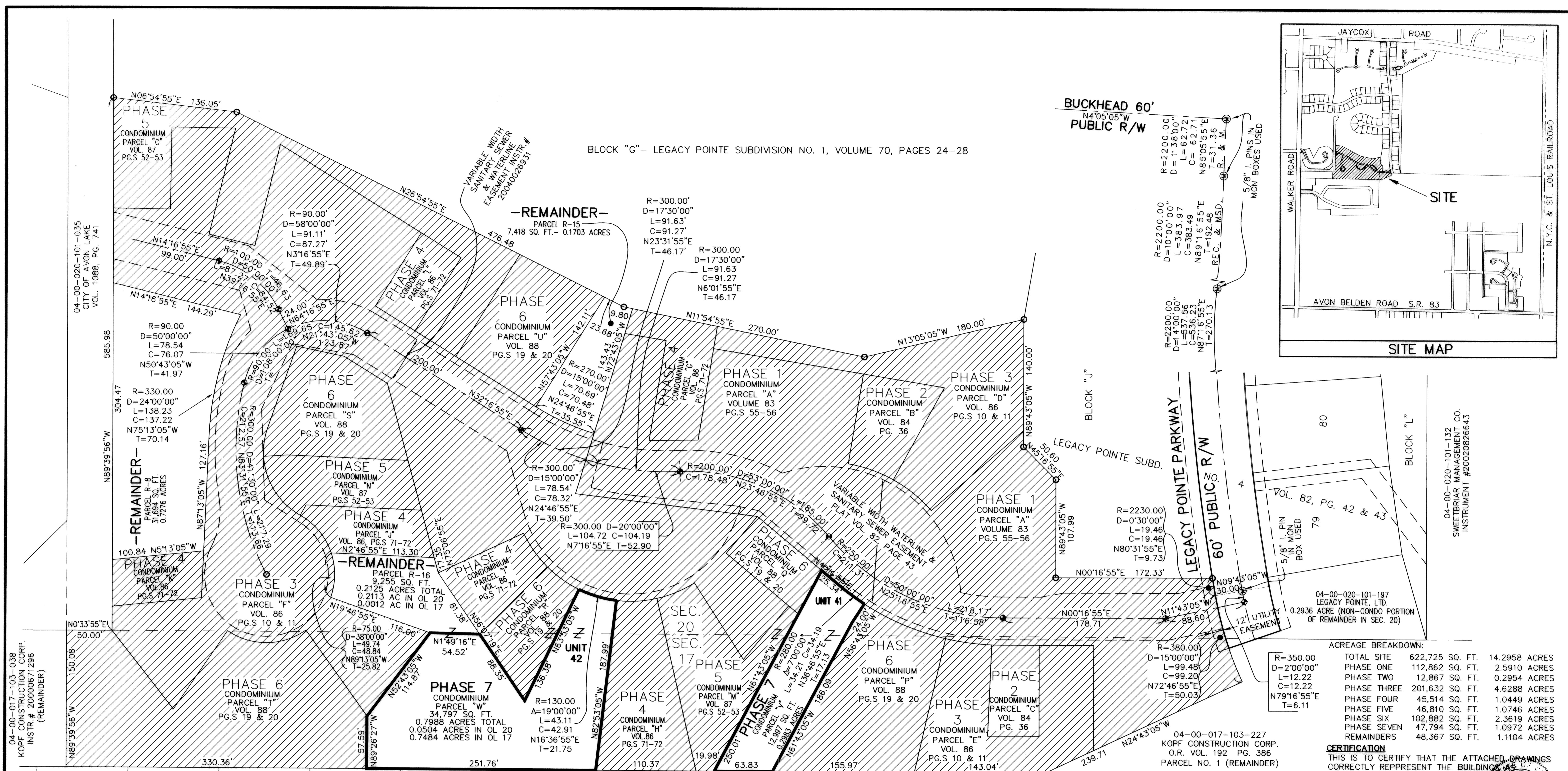
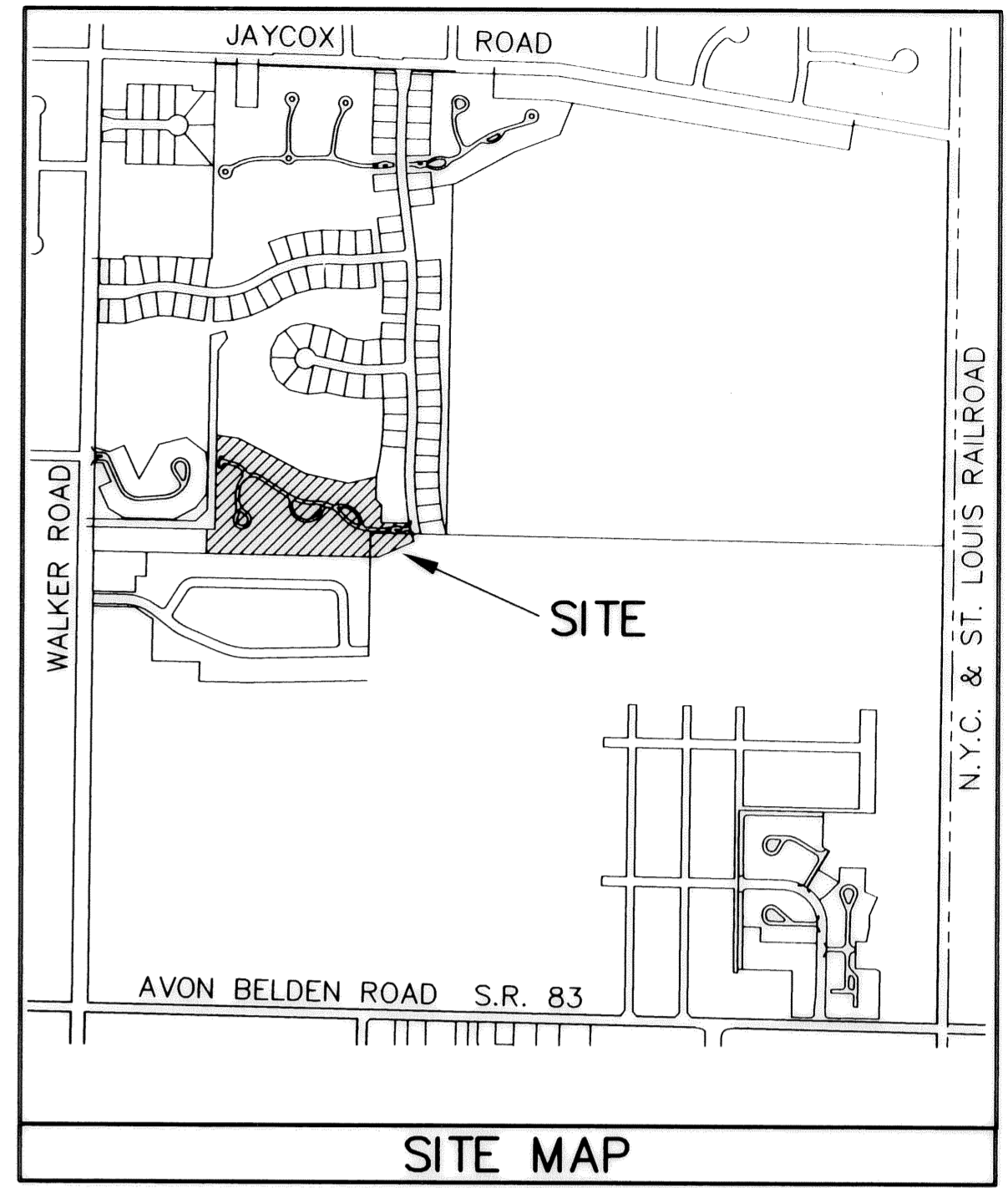


BLOCK "G" - LEGACY POINTE SUBDIVISION NO. 1, VOLUME 70, PAGES 24-28



ACREAGE BREAKDOWN:

TOTAL SITE	622,725 SQ. FT.	14.2958 ACRES
PHASE ONE	112,862 SQ. FT.	2.5910 ACRES
PHASE TWO	12,867 SQ. FT.	0.2954 ACRES
PHASE THREE	201,632 SQ. FT.	4.6288 ACRES
PHASE FOUR	45,514 SQ. FT.	1.0449 ACRES
PHASE FIVE	46,810 SQ. FT.	1.0746 ACRES
PHASE SIX	102,882 SQ. FT.	2.3619 ACRES
PHASE SEVEN	47,794 SQ. FT.	1.0972 ACRES
REMAINDERS	48,367 SQ. FT.	1.1104 ACRES

CERTIFICATION
 THIS IS TO CERTIFY THAT THE ATTACHED DRAWINGS CORRECTLY REPRESENT THE BUILDINGS AS CONSTRUCTED AND THAT THERE ARE NO ENCROACHMENTS ON ADJUTING PROPERTIES.

JAMES T. SAYLER, P.E.
 PROFESSIONAL ENGINEER NO. E-52385

JAMES T. SAYLER
 PROFESSIONAL SURVEYOR NO. S-7422

NOTE:
 LIMITED COMMON ELEMENTS INCLUDE THE LAND WITHIN 3 FEET FROM THE FOUNDATION AND PATIOS/DECKS/PORCHES/SUNROOMS OF EACH UNIT, AND LAND 12 FEET OFF OF MAIN REAR WALL FOR CONSTRUCTION OF A DECK OR PATIO

- LEGEND:**
- ⊙ DENOTES 5/8" CAPPED (REITZ ENG.) IRON PIN IN MONUMENT BOX USED.
 - DENOTES 5/8" CAPPED (REITZ ENG.) IRON PIN USED.
 - ⊕ DENOTES 1/4" DRILL HOLE USED
- BASED ON LEGACY POINTE SUBD. PLATS

GRAPHIC SCALE: 1" = 50'

04-00-017-103-038
 KOPF CONSTRUCTION CORP.
 INSTR. # 20000671296
 (REMAINDER)

04-00-020-101-035
 CITY OF AVON LAKE
 VOL. 1088, PG. 741

585.98

304.47

150.06

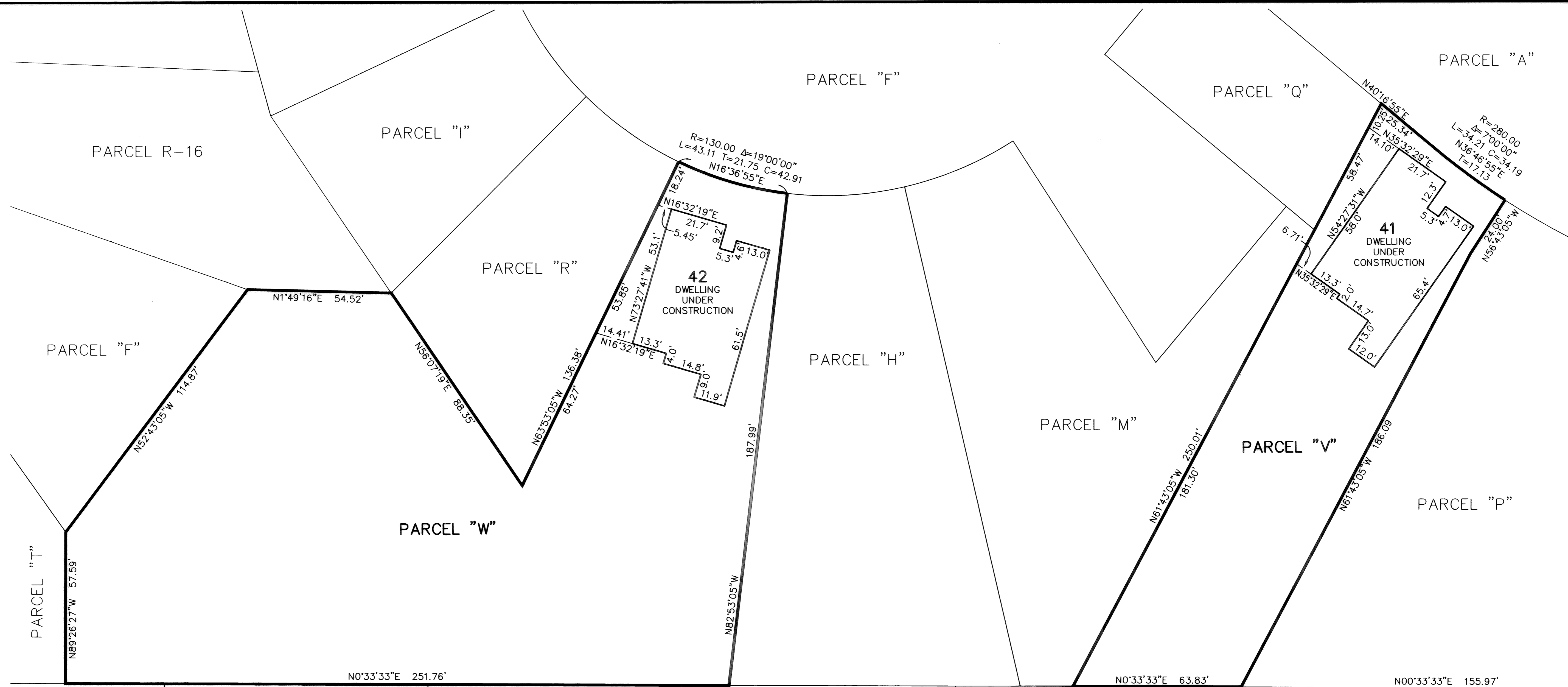
WINDSOR HOLLOW SUBDIVISION NO. 2, VOL. 52, PG. 7

**LEGACY POINTE
 CONDOMINIUM NO. 3 PH 7**

OF PART OF ORIGINAL AVON TWP. SEC #17 & #20
 CITY OF AVON LAKE, COUNTY OF LORAIN, OHIO

**THE HENRY G. REITZ
 ENGINEERING COMPANY**
 4214 ROCKY RIVER DRIVE
 CLEVELAND, OHIO 44135
 PHONE: (216) 251-3033

1
 2
 MARCH
 2006

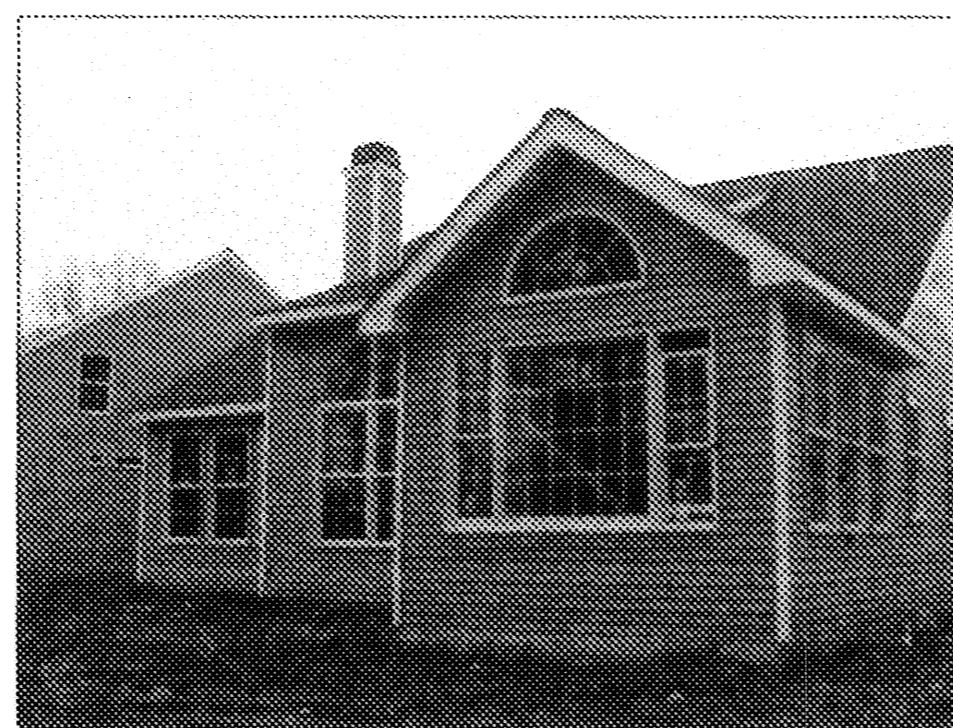


WINDSOR HOLLOW SUBDIVISION NO. 2

WINDSOR HOLLOW SUBDIVISION NO. 2



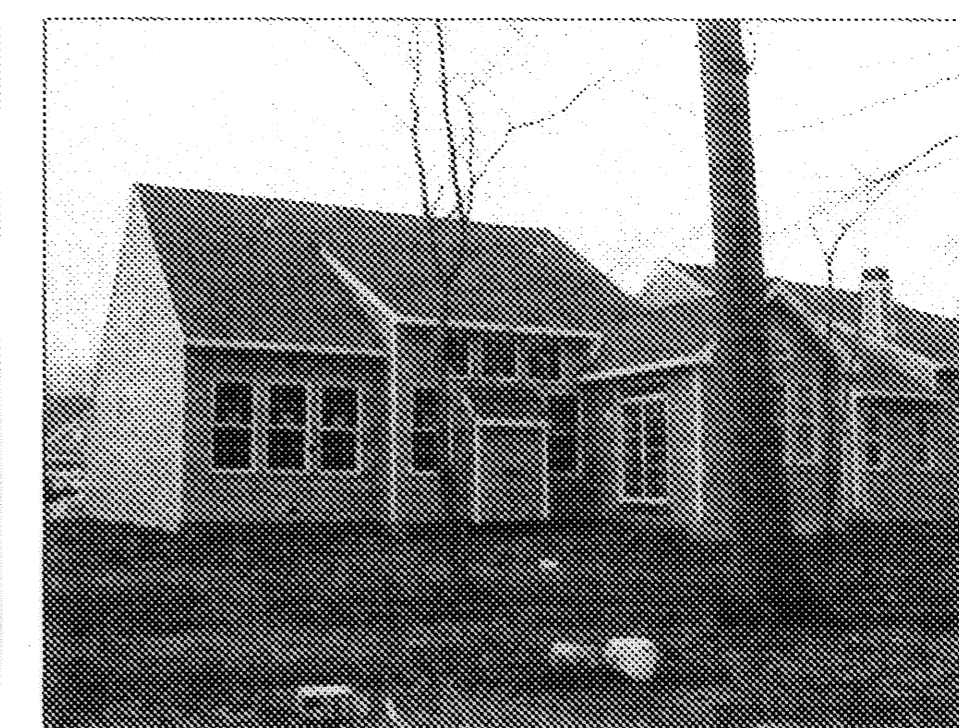
UNIT 42 FRONT



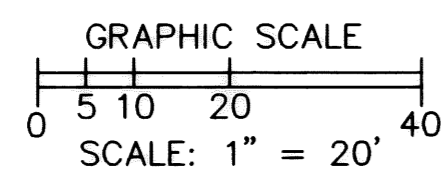
UNIT 42 REAR



UNIT 41 FRONT



UNIT 41 REAR



BASED ON LEGACY
 POINTE SUBD. PLATS
 N

REVISIONS	

**LEGACY POINTE
 CONDOMINIUM NO. 3 PH 7**

OF PART OF ORIGINAL AVON TWP. SEC #17 & #20
 CITY OF AVON LAKE, COUNTY OF LORAIN, OHIO

**THE HENRY G. REITZ
 ENGINEERING COMPANY**
 4214 ROCKY RIVER DRIVE
 CLEVELAND, OHIO 44135
 PHONE: (216) 251-3033

2 2
MARCH 2006